

Radial Piston Pump - 700bar

Model HP - 1B

MOC Aluminium
Max Flow 1.5 to 7.2lpm
Max Pressure 700Kgf/cm²



Doc No.: f2.0/HP1B/R1

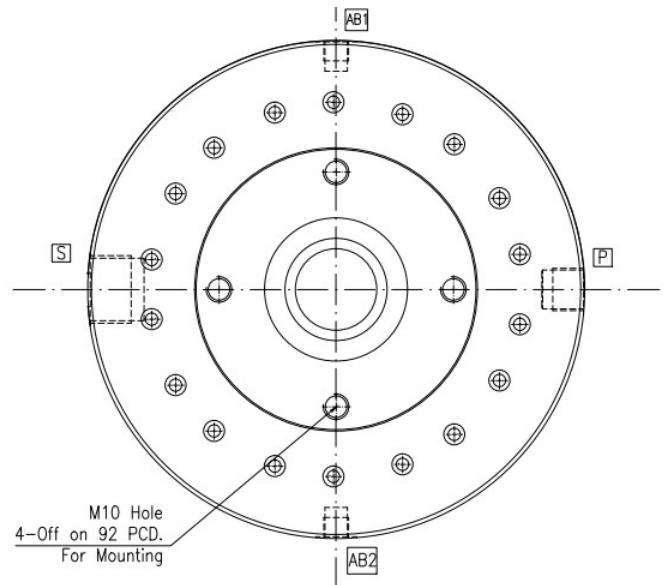
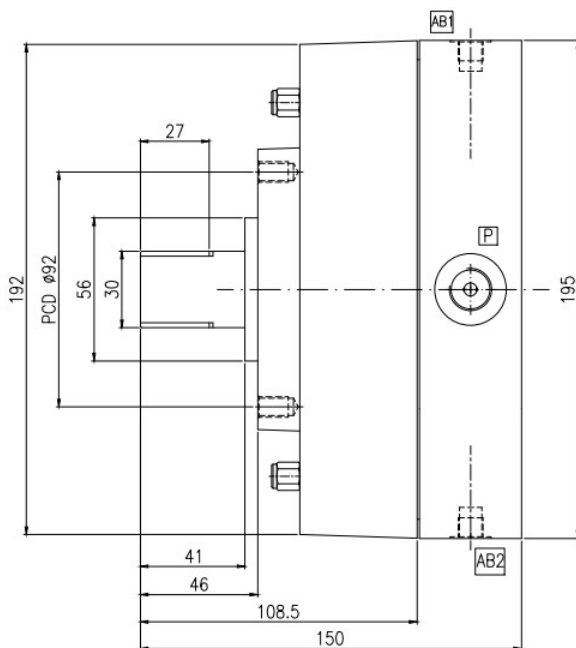


Description & Data

Radial Piston Pumps HP are used in applications involving high operating pressures viz. jacks, torqueing, crimping, bolting, test benches etc. The rugged design & construction of these pumps make it ideal for high pressures up to 700Kgf/cm². The pump base blocks use high strength aluminium alloy to reduce weight and the elements use high strength forged alloy steel MOC that ensure longevity and high efficiency. Consult factory for multi-port pumps with up to 4 pressure port configuration.

Max Pressure	Kgf/cm ²	700
Efficiency	At Max P	+ 85%
Noise Level	dB	< 85
Installation	Inside or Outside Oil Tank	
Oil Grade	Mineral Oil	ISO VG 32 - 100
Oil Cleanliness	ISO 4406	19 / 17 / 14
Operating Temp.	° C	+ 20 to 80

Dimension Data



P: Delivery Port 3/8" BSP
S: Suction Port 3/4" BSP
AB: Air Bleed Ports 1/8" BSP

Refer installation guidelines for air bleeding. At least one of the AB ports must be on top position when installed horizontal or vertical orientation. Ensure minimum oil head is available even at the lower most oil position to ensure that the pump does not run dry. Consult factory for any additional information.

Ordering Code

HP	1B	1.5lpm	/	700bar	Frame Size		Frame 1B			
HP = ELUIDIK High Pressure Radial Pump	1B = 1-port/ Frame B	Refer Flow options in LPM @ 1440RPM	Max Pressure = 700bar		Pump Element	3PA	5PA	7PA	9PA	
					HPA 08	1.5lpm	2.5lpm	3.6lpm	4.6lpm	
					Element Size	HPA 09	1.9lpm	3.2lpm	4.5lpm	5.8lpm
					HPA 10	2.4lpm	4.0lpm	5.6lpm	7.2lpm	
					Weight	Kg	8.5Kg	9.0Kg	9.5Kg	10.5Kg

1B = 1-port/ Frame B

HP = FLUIDIK High Pressure Radial Pump