

# Machine Tool HPU

## Model HC0333R00



Doc No.: f2.0/HC0333/R0

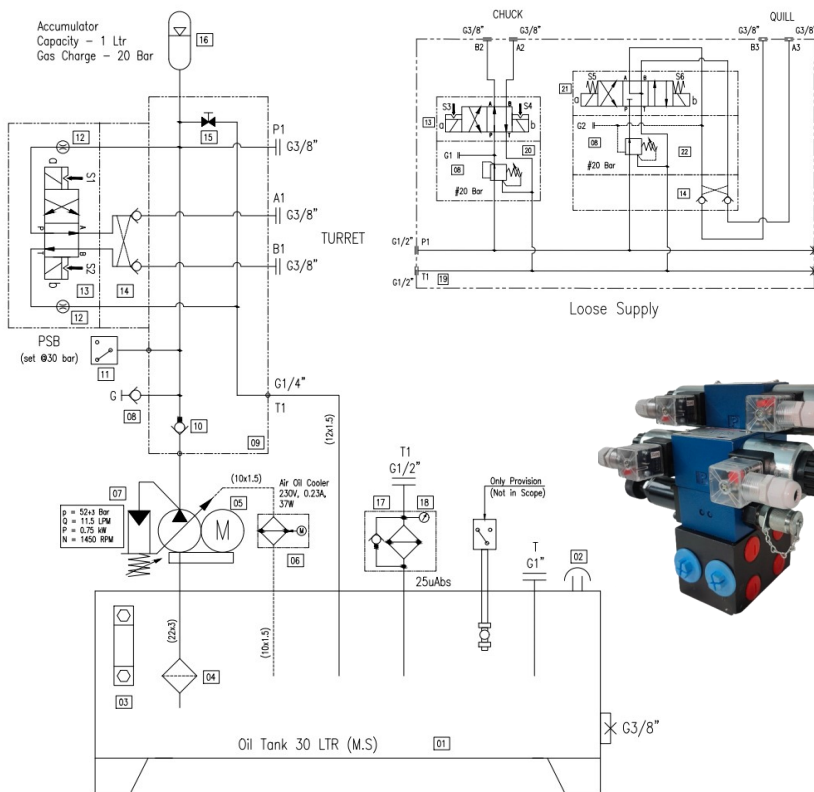
Max Flow 11.1lpm  
Max Pressure 70Kgf/cm<sup>2</sup>

### Description & Data

Machine Tool or CNC Power-packs are designed with 30ltr oil tank driving a Variable Vane Pump. The motor is a hollow shaft type with air-oil cooler providing additional cooling. A return line filter (25µ) is used to filter the return oil into the tank. The valve stack built around the power unit based on application requirements and will typically have a chuck clamp, tail stock and turret clamp stack built-in. An accumulator 1.0ltr is integrated into the circuit to compensate for any leakages or to meet the cycle time requirements.

Size	HC0333R00	
Max. Flow	Litres/min	11.1
Max. Pressure	Kgf/cm <sup>2</sup>	70
Oil Grade	Mineral Oil	ISO VG 46 - 100
Oil Cleanliness	ISO 4406	19 / 17 / 14
Operating Temp.	° C	+ 20 to 80
Solenoid Voltage	VDC	24

### Dimension Data



### Ordering Code

**HC0 - 333 - R00**

R00 = Revision Code

333 = Ref No for Machine Tool

HC0 = FLUIDIK Hydraulic Power-pack Circuit