

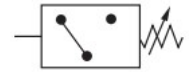
Hydraulic Pressure Switch

Model **PSB**

Mounting Sub-plate (4-bolt)
 Max Pressure 700Kgf/cm²
 Range 200-700Kgf/cm²



Doc No.: f2.0/PSB/R0

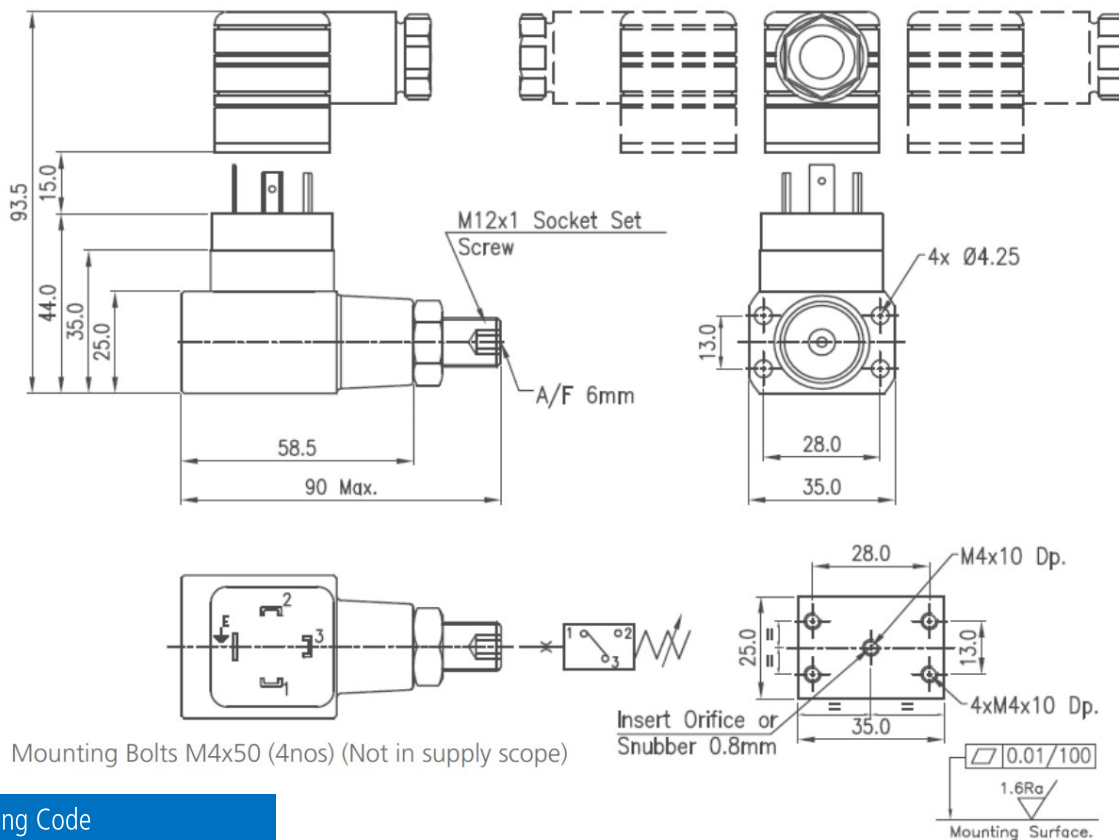


Description & Data

Electro-hydraulic pressure switch type PSB are piston type switches with single switching point that is settable over a wide range of pressure. These switches are used to trigger an electrical signal when a set pressure is achieved or exceeded. Designed for rugged and trouble free performance and product is available as sub-plate mounted design. The switches are spring loaded piston type with standard plug-in connector conforming to DIN 43650 / ISO 4400.

Size	FTJ	
Max Pressure	Kgf/cm ²	700
Range	Kgf/cm ²	200 to 700
Hysteresis	% of FS	5-15
Switching Frequency	Per min	30
Switching Accuracy	%	+/- 1% of FS
Contact Resistance	milliohms	< 10
Weight	Kg	0.35

Dimension Data



Mounting Bolts M4x50 (4nos) (Not in supply scope)

Ordering Code

PSB - 700 - 2x

2x = Version Code

700 = Max Pressure in Kgf/cm²

PSB = FLUIDIK Pressure Switch

