



OFFSHORE LIFTBOATS

L/B Joni

Class 175'

Official No.: 1179480



Phone: (985) 632-3414
Fax: (985) 632-5771

16182 West Main St
Cut Off, LA 70345

www.OffshoreLiftboats.com



OFFSHORE LIFTBOATS

LIFTBOAT "JONI"

CLASS 175
USCG CERTIFIED
Official No.: 1179480

GENERAL DIMENSIONS

Length Overall	113'-0"
Length Barge Only	110'-3"
Beam Overall	70'-0"
Beam Barge Only	64'-6"
Depth Barge Only	9'-0"
Open Deck Area 4000 SQ. FT.	4000 Sq. Ft.

HULL CHARACTERISTICS

Gross Tonnage	173 Tons
Net Tonnage	137 Tons
Maximum Deck Cargo	500,000 lbs.

LEGS

Quantity	3
Length	175'-0"
Size	54" O.D.
Wall Thickness	3/4" / 7/8"

PADS

Length	26'-0"
Width	14'-0"
Depth	2'-0"
Configuration	Raked

JACKING

Maximum Working Water Depth	130'-0"
Maximum Sea Conditions (jacking up or down)	5'
Total Jacks	18
Total Jacking Rating	1183.5 S-Tons
Total Holding Rating	1578.1 S-Tons

CAPACITIES

Fuel Oil	Approx. 8547 Gals.
Potable Water	Approx. 13,625 Gals.

LIVING QUARTERS

Crew Accommodations	7
VIP Accommodation	1
PACS Accommodations	22
Total	30
Central A/C & Heaters	
Lounge w/ Color TV, Sofas and Lounge Seats	
Heads	5-All Levels
Galley Seats	18
Laundry	2 Washers/Dryers

ELECTRONICS

VHS, SSB, Loud Hailer
Radar, Fathometer, GPS
Tilt Alarm

PROPULSION

(2) Main Engines CAT3412 Diesel
Reduction Gear Twin Disc

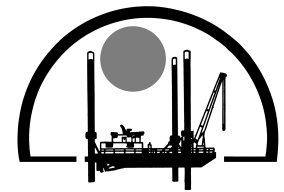
GENERATORS

(2) 95 KW Gensets CAT 3306 Diesel

CRANES

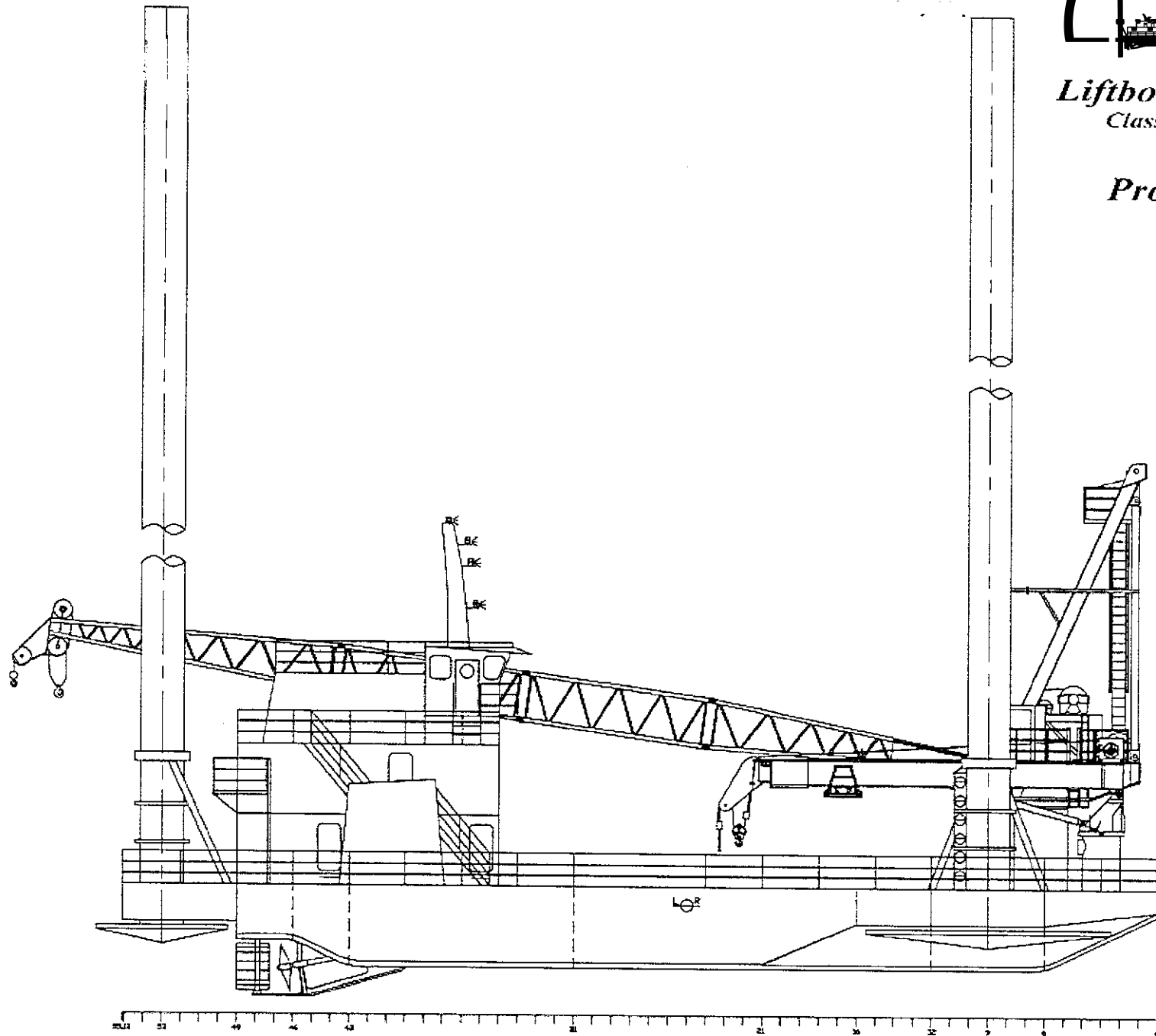
Port – 100 Ton Latice Boom 100' Boom
Stbd – 30 Ton Telescopic 40'-70' Boom
2 Crane Engines CAT3406 Diesel

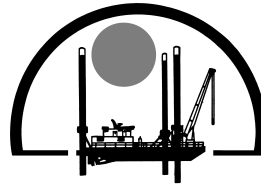




Liftboat Joni
Class 175

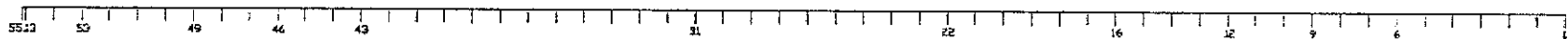
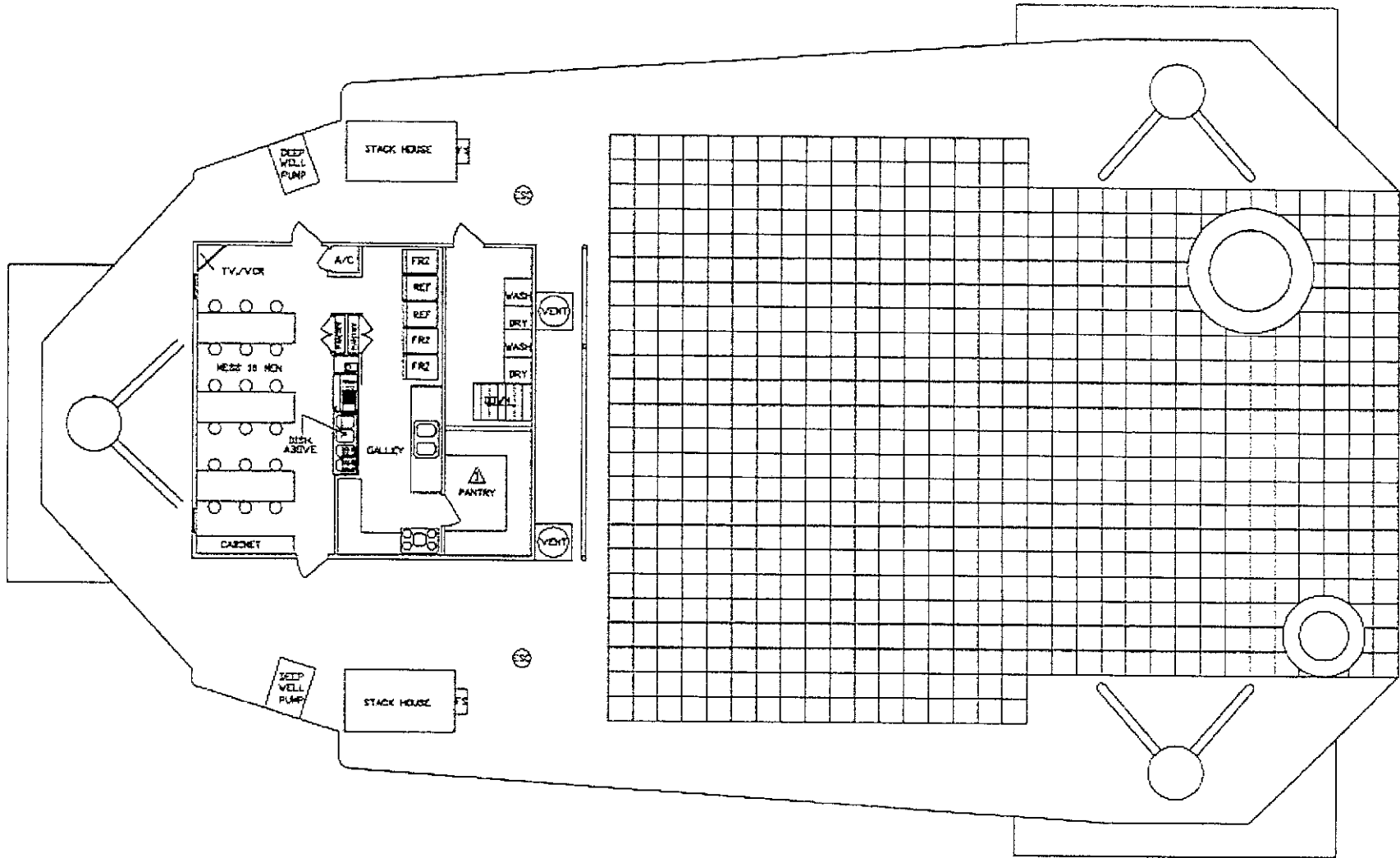
Profile

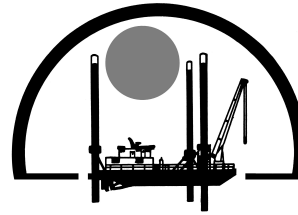




Liftboat Joni
Class 175

Main Deck Arrangement
Grid = 2'X2'

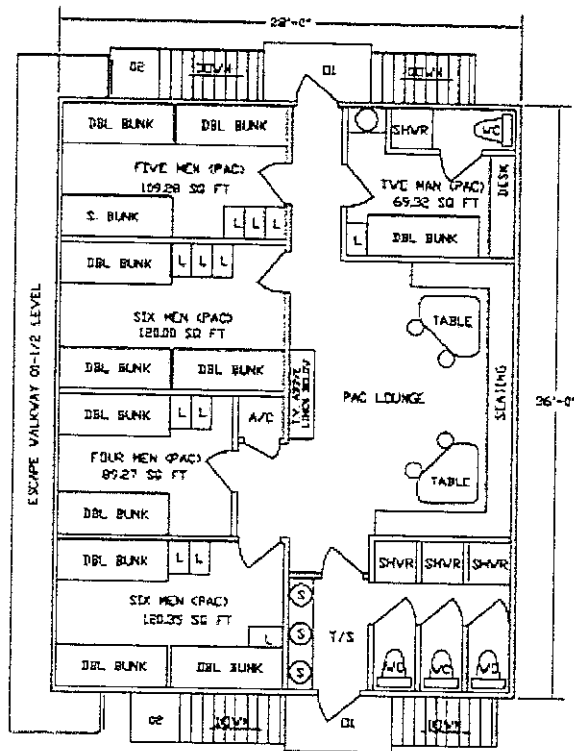




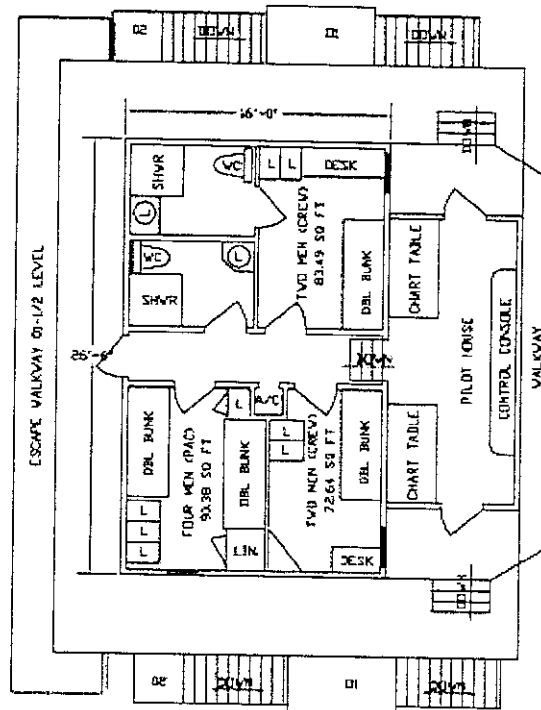
Liftboat Joni

Class 175

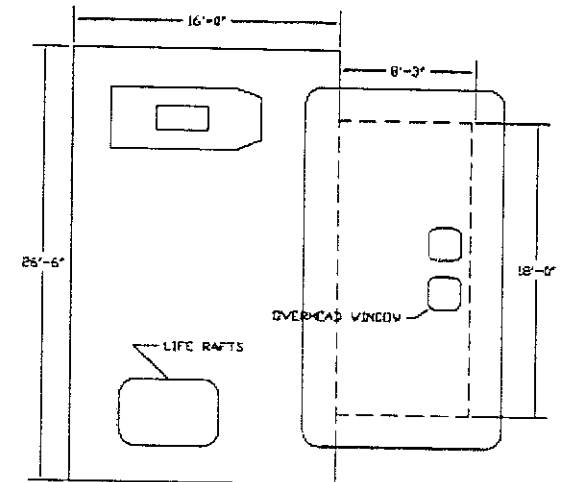
Quarters Arrangement



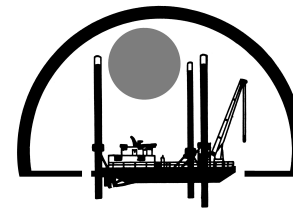
GENERAL ARRANGEMENT 01 LEVEL
SCALE 1/4" = 1'-0"



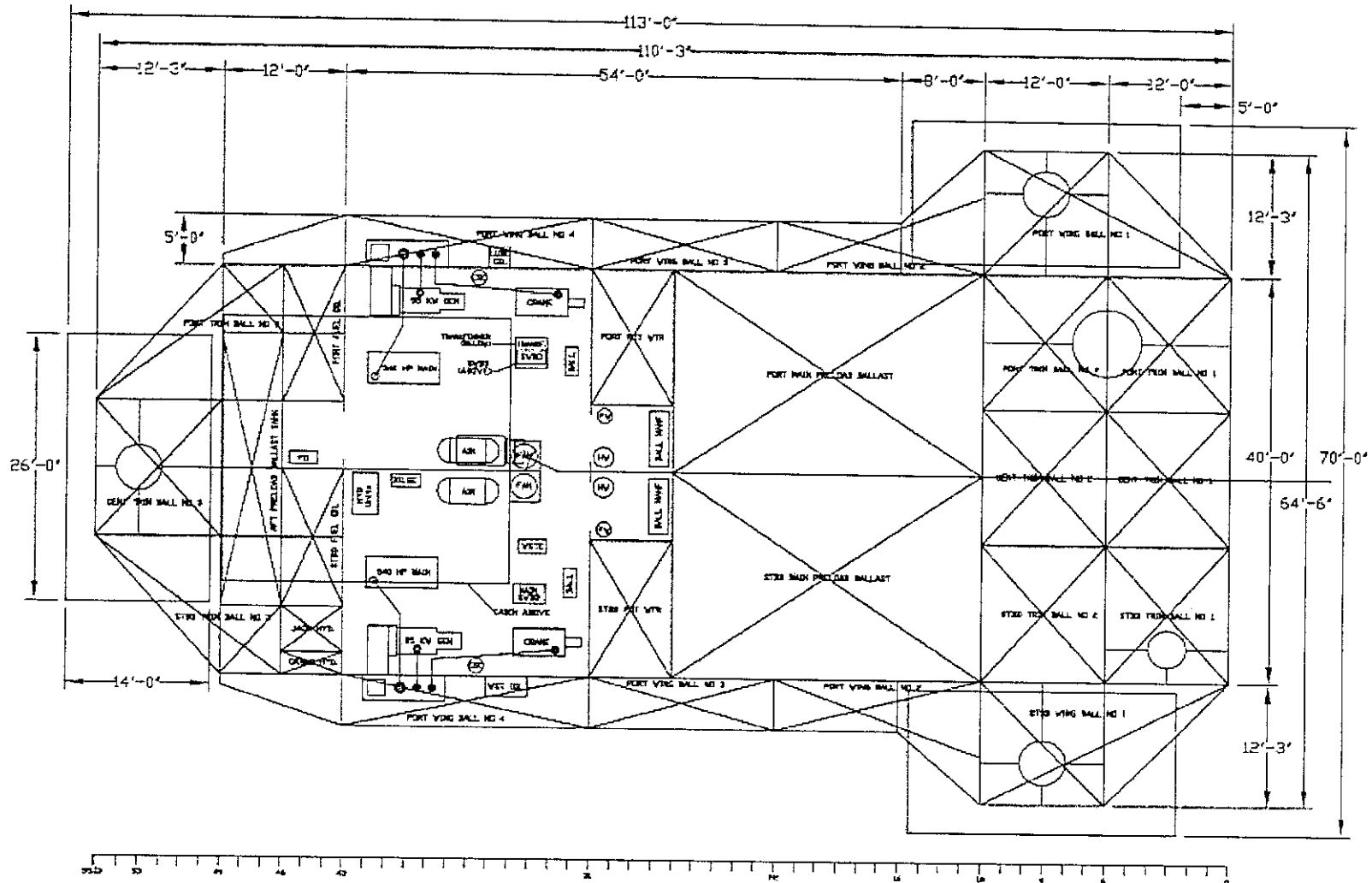
GENERAL ARRANGEMENT 02 LEVEL
SCALE 1/4" = 1'-0"

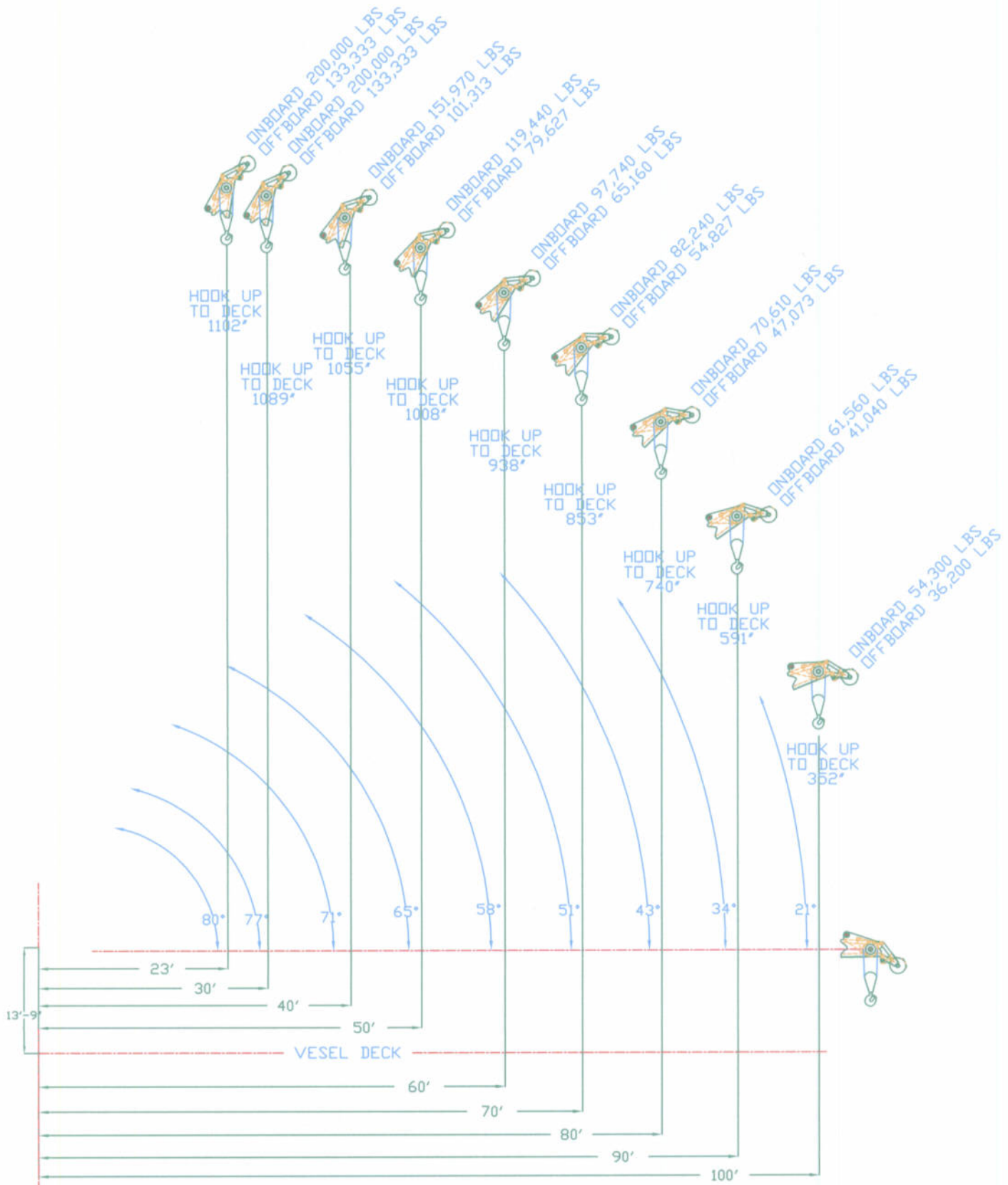


GENERAL ARRANGEMENT 03 LEVEL
SCALE 1/4" = 1'-0"



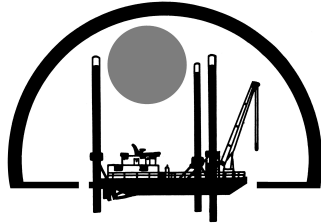
Liftboat Joni
 Class 175
 Hold Plan





CENTER OF ROTATION

	RAM100-100 LOAD GRAPH			
	Drawing 100-070-2895 *JONI*	Sheet 1 of 1		
Scale None	Rev. -	Classed API	Size	Date
Drawn By	RAM 100-100			
Checked By				



**MAIN HOIST
RAM100 TON 100 FT BOOM
MAXIMUM SAFE WORKING LOAD
L/B Joni**

Boom Angle (degrees)	Boom Radius (ft.)	Static Rating (x1000 lbs.)	Dynamic Rating (x1000 lbs.)
80	25	202.000	134.667
77	30	202.000	134.667
74	35	171.224	114.149
71	40	148.977	99.318
68	45	131.670	87.780
65	50	117.823	78.549
62	55	106.492	70.995
58	60	97.050	64.700
55	65	89.059	59.373
51	70	82.209	54.806
47	75	76.045	50.697
43	80	69.657	46.438
39	85	63.651	42.434
34	90	57.871	38.581
28	95	52.111	34.741
21	100	45.982	30.655
9	105	39.629	26.419
0	106	36.033	24.022

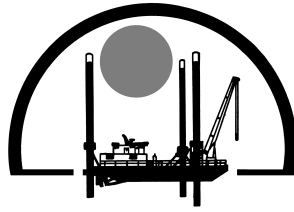
AUXILIARY HOIST MAXIMUM SAFE WORKING LOAD 12,000 LBS AT ALL RADII.

BASIS OF RATING:

- STATIC RATING ARE FOR LIFTING AND LANDING LOADS ON THE PLATFORM.
- DYNAMIC RATING ARE FOR LIFTING AND LANDING LOADS ON A FLOATING VESSEL.
- RATING EXCLUDE WEIGHT OF HOOK BLOCK AND OVERHAUL BALL

RIGGING:

- MAIN HOIST IS EIGHT PART REEVING OF 1" WIRE ROPE, ROTATION RESISTANT RIGHT REGULAR LAY WITH A MINIMUM BREAKING STRENGTH OF 127,000 LBS
- AUXILIARY HOIST IS ONE PART REEVING OF 3/4" WIRE ROPE, ROTATION RESISTANT RIGHT REGULAR LAY WITH A MINIMUM BREAKING STRENGTH OF 60,000 LBS
- BOOM HOIST IS ELEVEN PART REEVING OF 7/8" WIRE ROPE, 6X19 EEIP IWRC RIGHT REGULAR LAY, WITH A MINIMUM BREAKING STRENGTH OF 85,000 LBS
- PENDANTS: 2" WIRE ROPE 6X19 EEIP IWRC RIGHT REGULAR LAY, WITH A MINIMUM BREAKING STRENGTH OF 400,000 LBS EA.



L/B Joni

MODEL TC30-40-70 40 FT. RETRACTED API LOAD CHART (U.S. CUSTOMARY UNITS)

REACH (FT.)	BOOM ANGLE (DEG.)	DYNAMIC LOAD (LBS.)	STATIC LOAD (LBS.)
10	75.5	34900	53050
15	68.5	25550	39025
20	60	19850	30475
25	52.5	16400	25300
30	43	13650	21175
35	31	11200	17500
40	0	6650	10675

API PEDESTAL REACTIONS

MAXIMUM OTM = 1,620,400 FT. LBS.

CORRESPONDING AXIAL FORCE = 66,270 LBS.

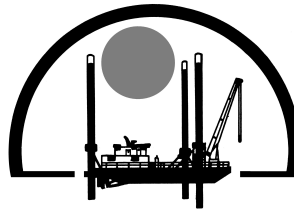
MAXIMUM AXIAL FORCE = 137,380 LBS.

CORRESPONDING OTM = 1,163,500 FT. LBS.

BASIC CRANE WEIGHT = 28,478 LBS.

(REACTIONS @ 3 X DYNAMIC RATED LOAD)

(OTM = OVERTURNING MOMENT)



L/B Joni

MODEL TC30-40-70 50 FT. EXTENDED API LOAD CHART (U.S. CUSTOMARY UNITS)

REACH (FT.)	BOOM ANGLE (DEG.)	DYNAMIC LOAD (LBS.)	STATIC LOAD (LBS.)
10	78	20300	20300
15	72.5	20300	20300
20	66.5	18900	20300
25	60	15350	20300
30	53.5	12950	20125
35	46	11000	17200
40	37.5	9400	14800
45	27	7900	12550
50	0	4500	7450

API PEDESTAL REACTIONS

MAXIMUM OTM = 1,615,600 FT. LBS.

CORRESPONDING AXIAL FORCE = 56,400 LBS.

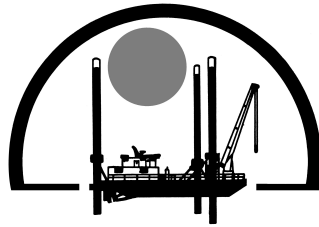
MAXIMUM AXIAL FORCE = 95,100 LBS.

CORRESPONDING OTM = 1,085,300 FT. LBS.

BASIC CRANE WEIGHT = 28,478 LBS.

(REACTIONS @ 3 X DYNAMIC RATED LOAD)

(OTM = OVERTURNING MOMENT)



L/B Joni

MODEL TC30-40-70 60 FT. EXTENDED API LOAD CHART (U.S. CUSTOMARY UNITS)

REACH (FT.)	BOOM ANGLE (DEG.)	DYNAMIC LOAD (LBS.)	STATIC LOAD (LBS.)
10	80	20100	20100
15	75.5	19850	20100
20	70.5	16000	20100
25	65.5	13350	20100
30	60	11350	17725
35	54.5	9850	15475
40	48.5	8600	13600
45	42	7700	12250
50	34	6650	10675
55	25	5600	9100
60	0	2950	5125

API PEDESTAL REACTIONS

MAXIMUM OTM = 1,600,700 FT. LBS.

CORRESPONDING AXIAL FORCE = 52,650 LBS.

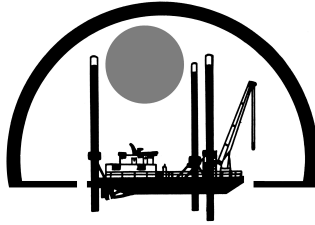
MAXIMUM AXIAL FORCE = 92,250 LBS.

CORRESPONDING OTM = 1,030,300 FT. LBS.

BASIC CRANE WEIGHT = 28,478 LBS.

(REACTIONS @ 3 X DYNAMIC RATED LOAD)

(OTM = OVERTURNING MOMENT)



L/B Joni

MODEL TC30-40-70 70 FT. EXTENDED API LOAD CHART (U.S. Customary Units)

REACH (FT.)	BOOM ANGLE (DEG.)	DYNAMIC LOAD (LBS.)	STATIC LOAD (LBS.)
10	81.5	20100	20100
15	77.5	16850	20100
20	73	12100	18850
25	69	10050	15775
30	64.5	8400	13300
35	60	7100	11350
40	55.5	6200	10000
45	50	5250	8575
50	44.5	4600	7600
55	38.5	4050	6775
60	31.5	3600	6100
65	22.5	3200	5500
70	0	1800	3400

API PEDESTAL REACTIONS

MAXIMUM OTM = 1,411,700 FT. LBS.

CORRESPONDING AXIAL FORCE = 42,290 LBS.

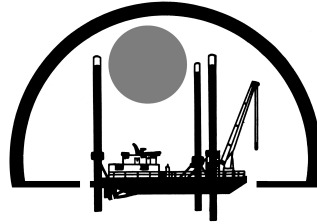
MAXIMUM AXIAL FORCE = 92,980 LBS.

CORRESPONDING OTM = 680,770 FT. LBS.

BASIC CRANE WEIGHT = 28,478 LBS.

(REACTIONS @ 3 X DYNAMIC RATED LOAD)

(OTM = OVERTURNING MOMENT)



L/B Joni

IN ACCORDANCE WITH API-2C, VALUES SHOWN ARE ACTUAL HOOK LOADS (WEIGHT OF BLOCK AND HOOK EXCLUDED).

LOAD LINE BLOCK WEIGHT IS 1300 LBS.

LOAD LINE (4 PART LINE): 1" 6x25 EIPS IWRC; 100,000 LB. BREAKING STRENGTH; 20,000 LB. WORKING STRENGTH.

FAST LINE BLOCK IS 100 LBS.

FAST LINE (1 PART LINE): 9/16" 19x7 EIPS IWRC; 25,000 LB. BREAKING STRENGTH; 5000 LB. WORKING STRENGTH.

STATIC LOAD = 1.5 x DYNAMIC LOAD

PEDESTAL REACTIONS ARE BASED ON THREE TIMES THE DYNAMIC LOAD PLUS DEAD LOAD.