

Score

# On Top of the World

Winterstate

B

Verse

I saw my life\_\_\_ In L E Ds\_\_\_

3

B/E

G#m

bur-ning bright in eff - ig - y\_\_\_ the light from it\_\_\_ is

6

F#

E

keep - ing me\_\_\_ a - wake...\_\_\_ There were

B

B/E

9

days of hope and con - se - quence...a guil - ded age\_\_\_ of in -

## On Top of the World

12 G#m F#

- no-cence we set our sights as high \_\_\_\_\_ as they could reach...

15 E Chorus B

Now I'm on top of the world...

18 B/E

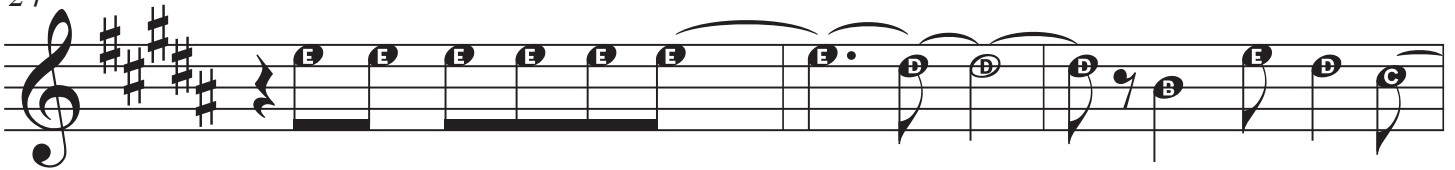
but ba-by I can't sleep \_\_\_\_\_ I've been dig-ging down deep-

21 G#m F# E

- er and deep-er just try-ing to find \_\_\_\_\_ what - ev-er you saw in me

B

24

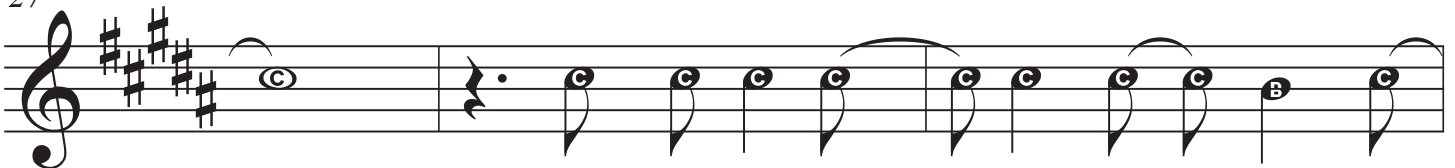


I'm on top of the world. \_\_\_\_\_ Don't let me go

B/E

G#m

27

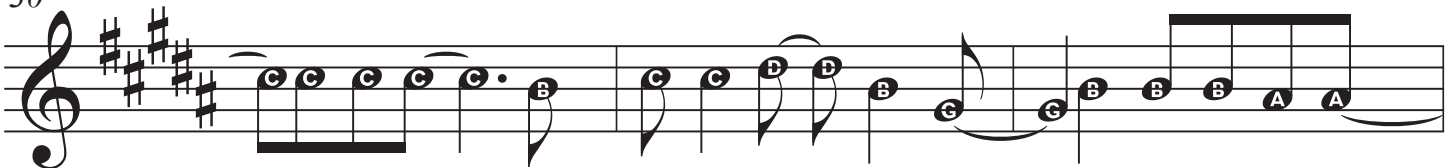


\_\_\_\_\_ 'Cause it's a long \_\_\_\_\_ way down when no -

F#

E

30

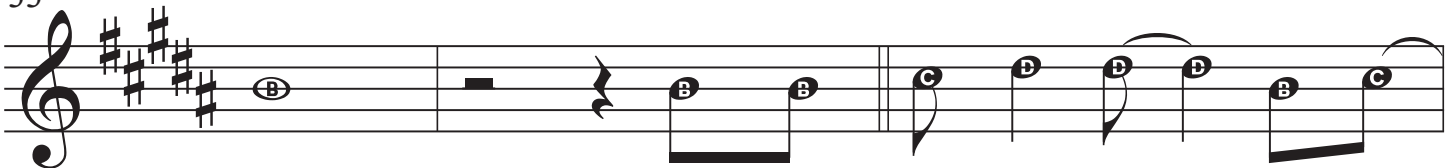


- bo-dy knows you're dy-ing on \_\_\_\_\_ your own \_\_\_\_\_ on top of the world...

B

**Verse** B

33

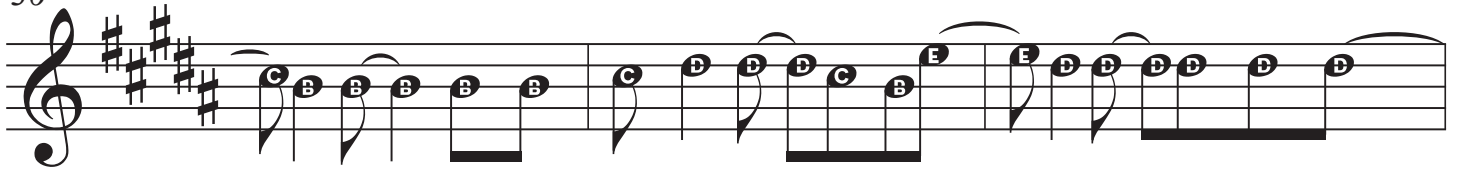


\_\_\_\_\_ There were times we lived like roy -

## On Top of the World

B/E

36



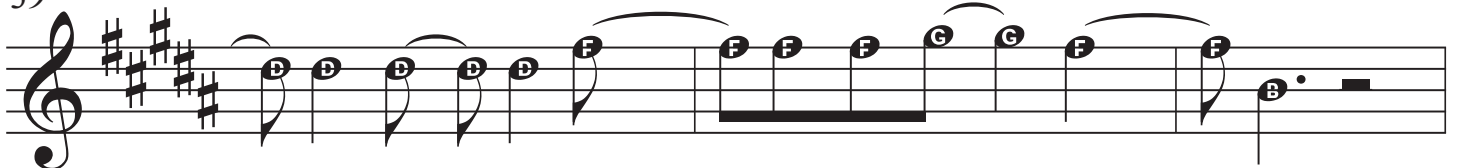
- al ty, — there were moments fit for the sil - ver screen, there were nights-

G#m

F#

E

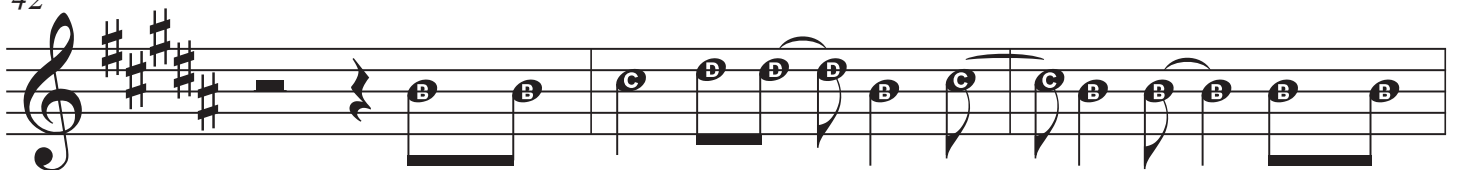
39



- we made a scene — on the way — back — home...

B

42

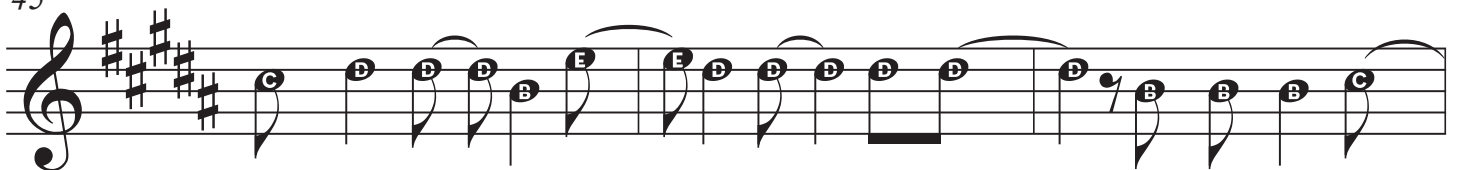


There were days we felt — like giv - ing up, — There were

B/E

G#m

45



fights that made us fall — in love with life... — and all the heart

48

F# E

**Chorus**

—ache it— can bring— I'm on top of the world

51

B B/E

but ba - by I can't sleep—

54

G#m F#

I've been dig-ging down deep - er and deeper just try-ing to find what-

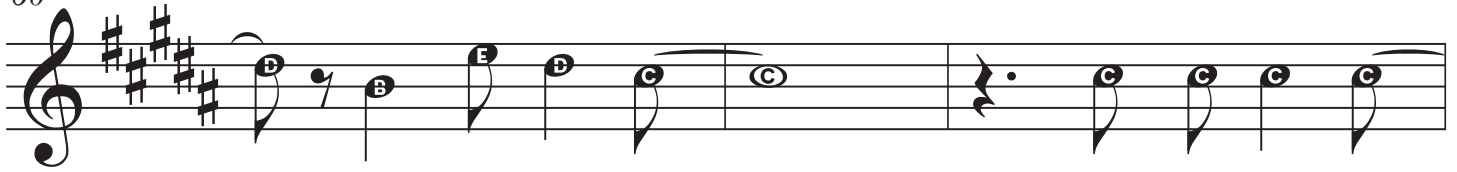
57

E B

ev-er you saw in me I'm on top of the world...—

B/E

60



— don't let me go... —

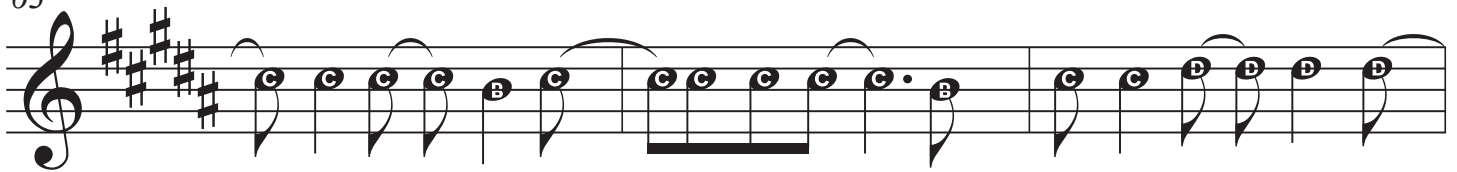
'Cause it's a long

G#m

F#

E

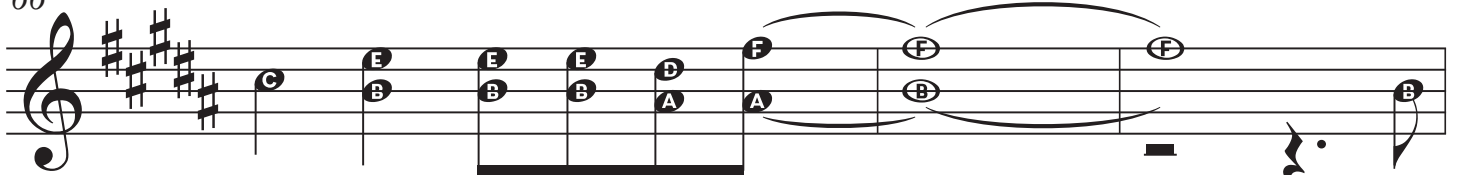
63



— way down when no — bo- dy knows you're dy- ing on — your own

B

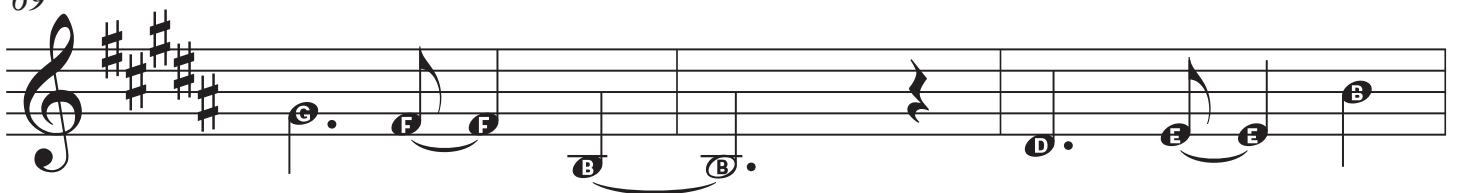
66



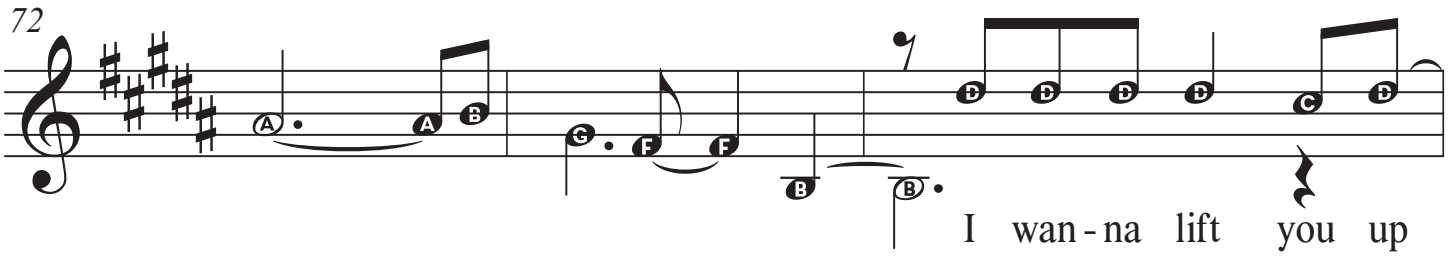
— on top of the world... —

### Bridge

69



72



I wan-na lift you up

Detailed description: This musical staff is in treble clef with a key signature of three sharps (F#, C#, G#). It begins with a whole note chord of A major (A, C#, E). The melody consists of quarter notes: A, B, C, F, F, B, B. The lyrics "I wan-na lift you up" are aligned with the notes B, B, C, F, F, B, B.

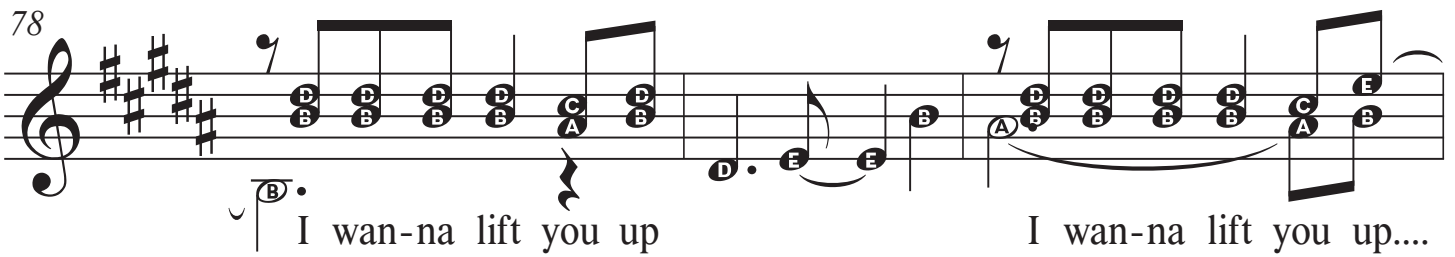
75



I wan-na lift you up... —

Detailed description: This musical staff continues the melody from measure 72. It starts with a whole note chord of B major (B, D#, F#). The melody consists of quarter notes: B, D, D, D, D, C, B, B. The lyrics "I wan-na lift you up..." are aligned with the notes B, D, D, D, D, C, B, B.

78




I wan-na lift you up I wan-na lift you up...

Detailed description: This musical staff contains two phrases. The first phrase starts with a whole note chord of B major (B, D#, F#) and has a melody of quarter notes: B, B, C, B, B, C, A, B. The second phrase starts with a whole note chord of D major (D, F#, A) and has a melody of quarter notes: D, E, E, B, A, B, B, B. The lyrics "I wan-na lift you up" and "I wan-na lift you up..." are aligned with the notes of each phrase.

**Chorus** B

81



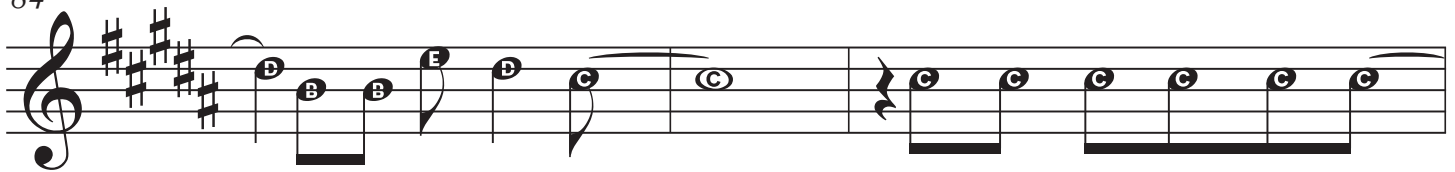
On top of the world...

Detailed description: This musical staff is in treble clef with a key signature of three sharps. It begins with a whole note chord of E major (E, G#, B). The melody consists of quarter notes: E, F, E, E, E, E, E, E. The lyrics "On top of the world..." are aligned with the notes E, F, E, E, E, E, E, E.

## On Top of the World

B/E

84



ba-by I can't sleep\_\_\_\_

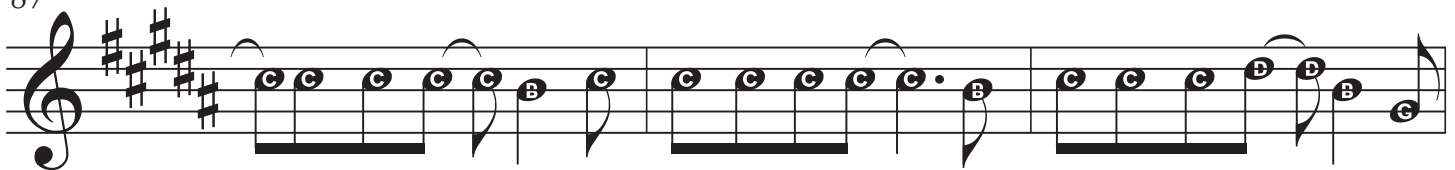
I've been dig-ging down deep

G#m

F#

E

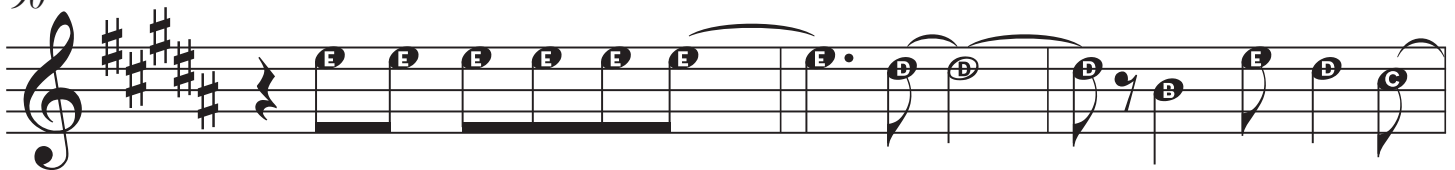
87



\_\_\_\_per and deep-per just try-ing to find\_what - ev-ver you saw in me

B

90

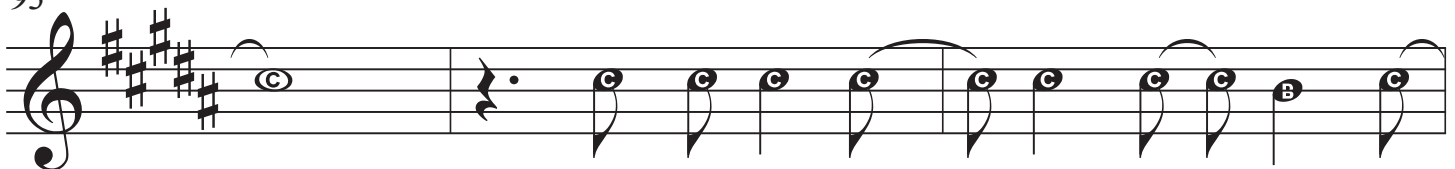


I'm on top of the world\_\_\_\_\_ Don't let me go

B/E

G#m

93



\_\_\_\_ Cause it's a long\_\_\_\_ way down when no -



96

F# E

**Chorus**

- bo-dy knows you're dy-ing on your own on top of the world

99

B B/E

bab - y I can't sleep

102

G#m F#

I've been dig-ging down deep er and deeper just try-ing to find what

105

E B

ev-er you saw in me I'm on top of the world...

## On Top of the World

108

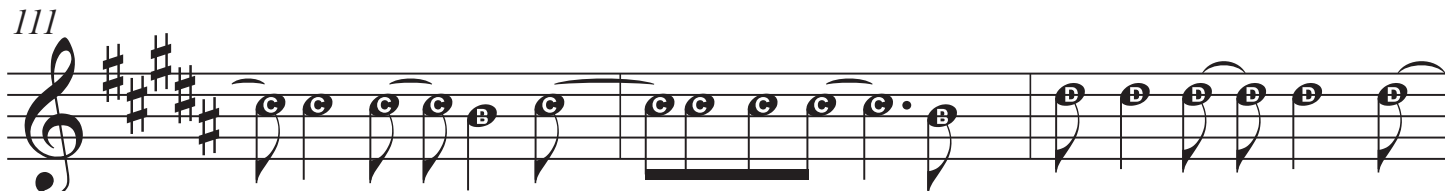
B/E



— don't let me go... — 'Cause it's a long

111

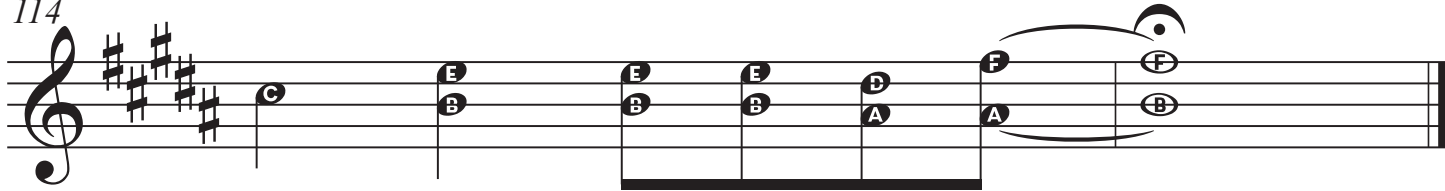
G#m F# E



—way down when no - bo - dy knows you're dy ing on — your own -

114

B



- on top of the world... —