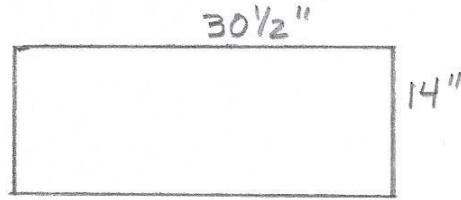


MAGIC TOTE BAG

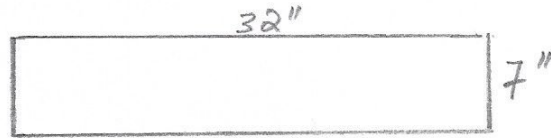
YouTube Video, Search; Magic Tote Bag

Materials – 4 Rectangles;

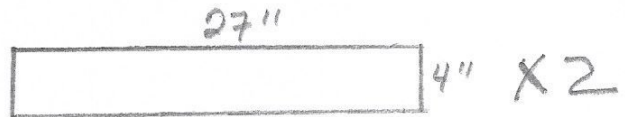
1. Main Body (MB)- 30 1/2" x 14"



2. Top of Bag (ToB)- 7" x 32"



3. Straps (STr)- 2 @ 4" x 27"



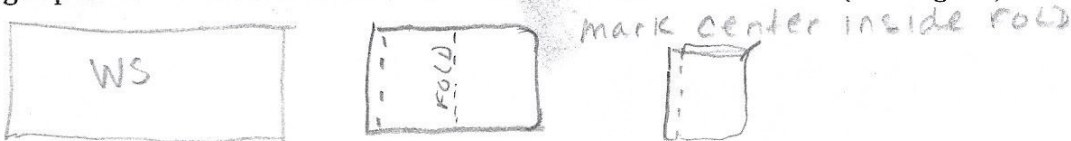
Steps-

1. Press ToB in half lengthwise, set aside.

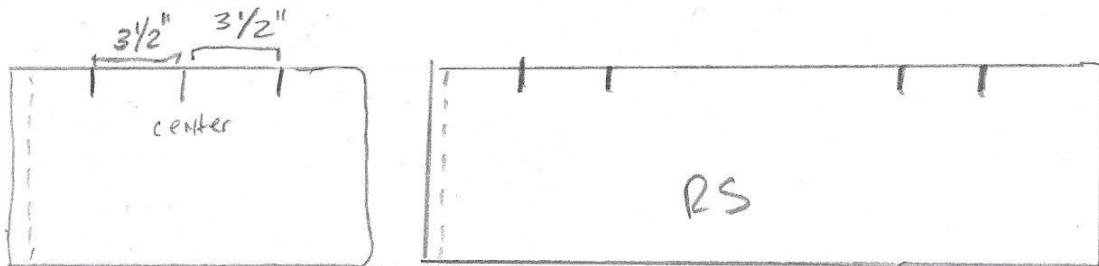
2. Make Straps; Press Str fabric in half lengthwise, open and fold sides inward to meet at center, press and fold together forming a 1" strap. Stitch down edge.

3. Mark MB fabric for strap placement;

A. Fold MB in half, WST & mark 1/2" seam allowance on raw edge side. Fold in half placing folded edge up to marked seam allowance line. Mark inside the fold for center (see diagram).



B, Open once so that fabric is still folded once. Mark 3 1/2" to each side of center (see Diagram). Mark on BOTH SIDES. When you open fabric up you should have 4 marks equally spaced for the straps.

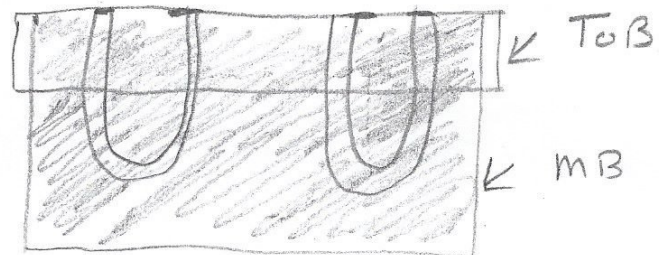


4. Layer all pieces as follows;

ToB first—RIGHT SIDE UP,

Lay MB fabric on top, RIGHT SIDE UP, align top edges. Sides of ToB fabric will be wider, but will be trimmed later.

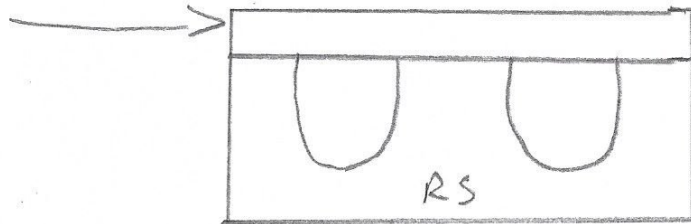
Position straps, pin or wonder clip in place.



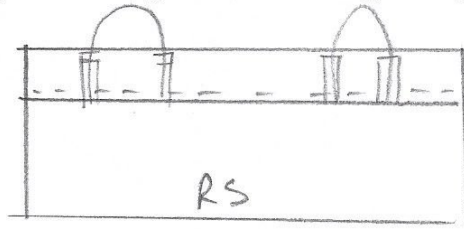
5. Roll MB fabric up from bottom until you can fold ToB fabric over making a tube, (like a burrito pillow case). Stitch along raw top edge, using a 1/4" seam. Turn inside out.



6. Press top fold again, }



7. Fold handles up and stitch in place with a rectangle. Top stitch along seam, reinforcing at straps.



8. French seam;

Fold bag WST and stitch 1/8" around side and bottom.
Turn inside out and stitch 1/4" around side and bottom.
Press seams flat.

TURN OUT YOU'VE FINISHED!!

French seam

