

# **S3 SURFACES INDIA PRIVATE LIMITED**

**Redefine and elevate your space with Luxury & Eternity**

**First Indian company that makes Metallic Bonded Surfaces in India**

## **\* Bonded S3 Surfaces™ Catalogue\***

**Types of Bonded S3 Surfaces™: S3 stands for 3 types:**

- ✓ **Metallic Bonded Surfaces**
- ✓ **Crystal-Quartz Bonded Surfaces**
- ✓ **Metallic Bonded Murals and Portraits**

## **A) METALLIC BONDED S3 SURFACES™**

**Metallic Bonded** is a high-performance surfacing sheet cast by blending metal granules with a FRP matrix to create a material that is flexible, lightweight, extremely durable, and a low-maintenance surfacing sheet with a character and appearance like a solid metal.

The Metallic Bonded Surfaces are available in Bronze, Aluminium, Nickel-Silver, and Gold-Bronze as standard. For larger order quantities, metallic copper colour is made available as an additional colour option.

A contrast-enhancing surface treatment is applied to achieve an antique dark patina finish; if not used, it is a natural finish.

### **OPTIONS OF METAL TYPES AND PATINA FINISHES**



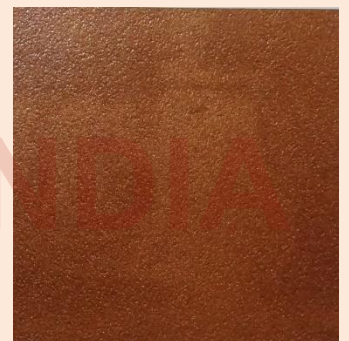
**Aluminium(AL) – Dark(D)**



**Bronze(BZ) – Dark(D)**



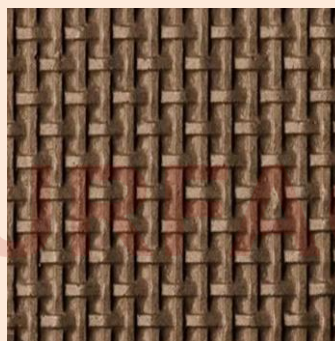
**Nickel-Silver(Ni-SI)–Dark(D)**



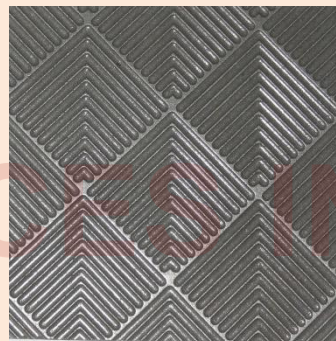
**Copper(CU) – Natural(N)**



**Aluminium(AL) – Natural(N)**



**Bronze(BZ) – Natural(N)**



**Nickel-Silver (Ni-Si)-Natural(N)**



**Gold-Bronze – Natural(N)**

				BONDED BRONZE		BONDED ALUMINIUM		BONDED NICKEL-SILVER		BONDED GOLD-BRONZE
PATTERN & CODE	TYPE: (SL/A/B/C)	THICKNESS Inches & mm	SHEET SIZE (Width X Length)	DARK Finish	NATURAL Finish	DARK Finish	NATURAL Finish	DARK Finish	NATURAL Finish	NATURAL Finish
BEAD-BLAST 001	STANDARD (SL/A)	0.100" / 0.120" (2.5 / 3.0 mm)	48" x 96" / 120" (1219 x 2438/3048 mm)	Yes	Yes	Yes	Yes	Yes	Yes	Yes
CHARLESTON- MAT 002	STANDARD (B)	0.138" (3.5 mm)	36" x 120" (915 x 3048 mm)	Yes	Yes	Yes	Yes	Yes	Yes	Yes
CHESS 003	SLIMLINE (SL) / STANDARD (A)	0.100" / 0.120" (2.5 / 2.9 mm)	47.35" x 95.60" (1203 x 2428 mm)	No	Yes	No	Yes	No	Yes	Yes
CHEVRON 004	STANDARD (B)	0.134" (3.4 mm)	48" x 120" (1219 x 3048 mm)	Yes	Yes	Yes	Yes	Yes	Yes	Yes
CREEPER 005	STANDARD (A)	0.120" (2.9 mm)	48" x 96" (1219 x 2438 mm)	No	Yes	No	Yes	No	Yes	Yes
CUTTER 006	STANDARD (A)	0.120" (2.9 mm)	48" x 96" (1219 x 2438 mm)	Yes	Yes	Yes	Yes	Yes	Yes	Yes
ECLIPSIS 007	STANDARD – Left & Right-hand sheets (C)	0.178" (6.5 mm)	48" x 96" (1219 x 2438 mm)	Yes	Yes	Yes	Yes	Yes	Yes	Yes
EGYPTIAN 008	SLIMLINE (SL) / STANDARD (A)	0.090" / 0.120" (2.25 / 2.9 mm)	48" x 96" (1219 x 2438 mm)	Yes	Yes	Yes	Yes	Yes	Yes	Yes
FABRIC 009	SLIMLINE (SL) / STANDARD (A)	0.090" / 0.120" (2.25 / 2.9 mm)	48" x 96" (1219 x 2438 mm)	Yes	Yes	Yes	Yes	Yes	Yes	Yes
FEATHER 010	STANDARD (A)	0.120" (2.9 mm)	48" x 96" (1219 x 2438 mm)	Yes	Yes	Yes	Yes	Yes	Yes	Yes
FLUTED 011	STANDARD (B)	0.138" (3.5 mm)	48" x 120" (1219 x 3048 mm)	Yes	Yes	Yes	Yes	Yes	Yes	Yes
FROND 012	SLIMLINE (SL) / STANDARD (A)	0.090" / 0.120" (2.25 / 2.9 mm)	48" x 96" (1219 x 2438 mm)	Yes	Yes	Yes	Yes	Yes	Yes	Yes
GRASS- TUNDRA 013	STANDARD (A)	0.138" (3.5 mm)	48" x 120" (1219 x 3048 mm)	Yes	Yes	Yes	Yes	Yes	Yes	Yes
GROOVED 014	STANDARD (B)	0.138" (3.5 mm)	48" x 96" (1219 x 2438 mm)	Yes	Yes	Yes	Yes	Yes	Yes	Yes
HONEYCOMB 015	STANDARD (C)	0.210" (5.3 mm)	48" x 96" (1219 x 2438 mm)	No	Yes	No	Yes	No	Yes	Yes
LOUVER 016	STANDARD (B)	0.155" (3.9 mm)	48" x 96" (1219 x 2438 mm)	Yes	Yes	Yes	Yes	Yes	Yes	Yes
PETAL 017	SLIMLINE (SL) / STANDARD (A)	0.090" / 0.120" (2.25 / 2.9 mm)	48" x 96" (1219 x 2438 mm)	Yes	Yes	Yes	Yes	Yes	Yes	Yes
PRISMATIC 018	STANDARD (C)	0.256" (6.5 mm)	48" x 96" (1219 x 2438 mm)	Yes	Yes	Yes	Yes	Yes	Yes	Yes
SOLARIS 019	STANDARD – Left & Right-hand sheets (C)	0.315" (8.0 mm)	48" x 96"/120" (1219 x 2438/3048 mm)	Yes	Yes	Yes	Yes	Yes	Yes	Yes
THAR 020	STANDARD (B)	0.147" (3.7 mm)	48" x 96" (1219 x 2438 mm)	Yes	Yes	Yes	Yes	Yes	Yes	Yes
TREAD 021	SLIMLINE (SL) / STANDARD (A)	0.090" / 0.120" (2.25 / 2.9 mm)	48" x 96" (1219 x 2438 mm)	Yes	Yes	Yes	Yes	Yes	Yes	Yes
WEB 022	SLIMLINE (SL) / STANDARD (A)	0.090" / 0.120" (2.25 / 2.9 mm)	48" x 96" (1219 x 2438 mm)	Yes	Yes	Yes	Yes	Yes	Yes	Yes
WHIRL 023	SLIMLINE (SL) / STANDARD (A)	0.090" / 0.120" (2.25 / 2.9 mm)	48" x 96" (1219 x 2438 mm)	Yes	Yes	Yes	Yes	Yes	Yes	Yes
WOVEN 024	SLIMLINE (SL) / STANDARD (A)	0.090" / 0.120" (2.25 / 2.9 mm)	48" x 96" (1219 x 2438 mm)	Yes	Yes	Yes	Yes	Yes	Yes	Yes

## **MATERIAL SPECIFICATION**

- **Slimline Surfaces: Type SL**  
Some pattern surfaces are available in a reduced sheet thickness between 2 to 2.5 mm. They are economical and are used where clearance is less.
- **Standard Surfaces: Type A to E**  
These are available in thicknesses varying from 3 to 8 mm, depending on the depth of design.

## **MATERIAL TOLERANCES**

The chart below shows thickness and sheet sizes for all castings of Metallic Bonded S3 Surfaces™.

Dimensional tolerances are –

- a) For Thickness of sheets up to 4.5 mm, +/- 0.5 mm & above 4.5 mm, +/- 1 mm.
- b) For Sheet Width & Length, +/- 3 mm.

For backed castings, simply add your preferred backer or substrate thickness to the casting thickness shown. Castings may be specified in any sheet size up to the maximum indicated in the chart.

## **HOW TO SPECIFY AND ORDER**

To order a product, please indicate pattern, type, colour, finish, size, and quantity.

## **IMAGES OF SHEETS AND SAMPLE SWATCHES**

The images of small-sized sample swatches and sheets are shown to understand the pattern design, colour & finish.

**\*\*\*Please note that -**

- 1) All the images shown in this document are to understand the pattern orientation.
- 2) Actual finishes or colours may vary slightly from those shown in this document because different computer monitors & mobile screens will render colours differently. Hence, please refer to the physical samples for the actual pattern/texture/design, colour & finish. While every effort is made to maintain consistency in finish colour, due to the nature of the manufacturing process of Metallic Bonded Surfaces, slight variation can occur.
- 3) The surfaces are handcrafted by our artists. As a result, every surface may have minor changes. Please do not consider them as flaws rather as artistic variations.
- 4) The physically small-sized marketing samples are mounted to an aluminium backing for presentation purposes only. This aluminium backing material does not appear on the final product.

## **BEAD-BLAST**



BZ-D

BZ-N

AL-DARK

AL-NATURAL

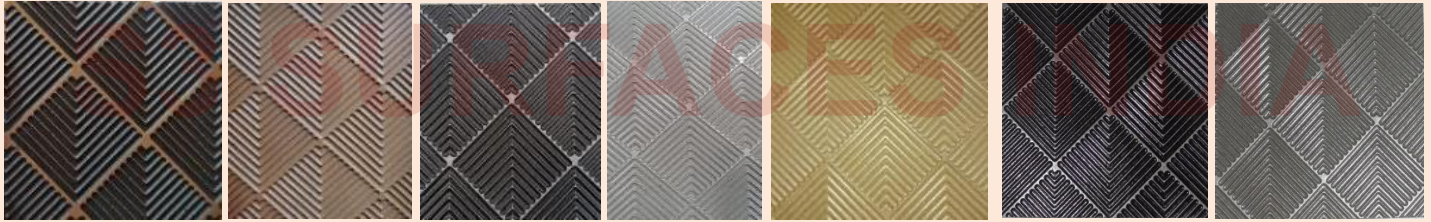
COPPER\_N

Gold-BZ-N

Ni-Si-N



## CHEVRON



BZ-DARK

BZ-NATURAL

AL-DARK

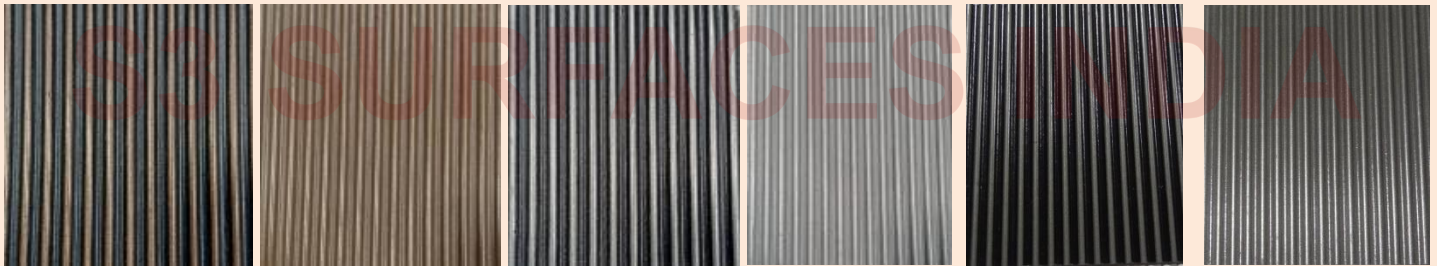
AL-N

Gold-BZ-N

Ni-Si-DARK

Ni-Si-NATURAL

## FLUTED



BRONZE-DARK

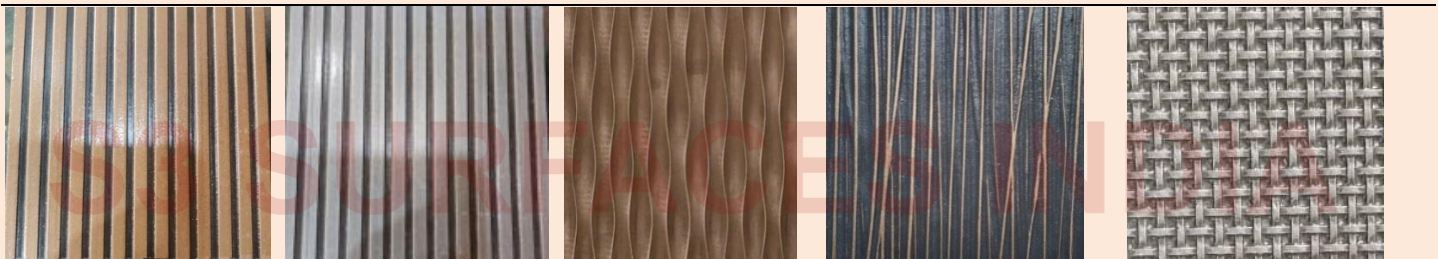
BZ-NATURAL

AL-DARK

AL-NATURAL

Ni-Si-DARK

Ni-Si-NATURAL



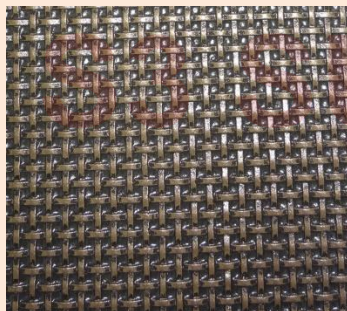
LOUVERS-BZ-DARK

LOUVERS-AL-DARK

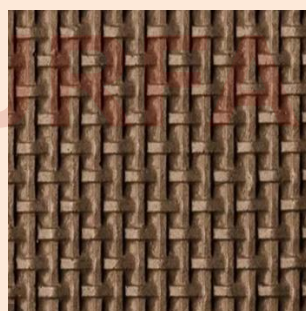
HONEYCOMB-BZ-N

GRASS-TUNDRA-BZ-D

CHARLESTON-MAT-AL-N



CHARLESTON-MAT-BZ-D

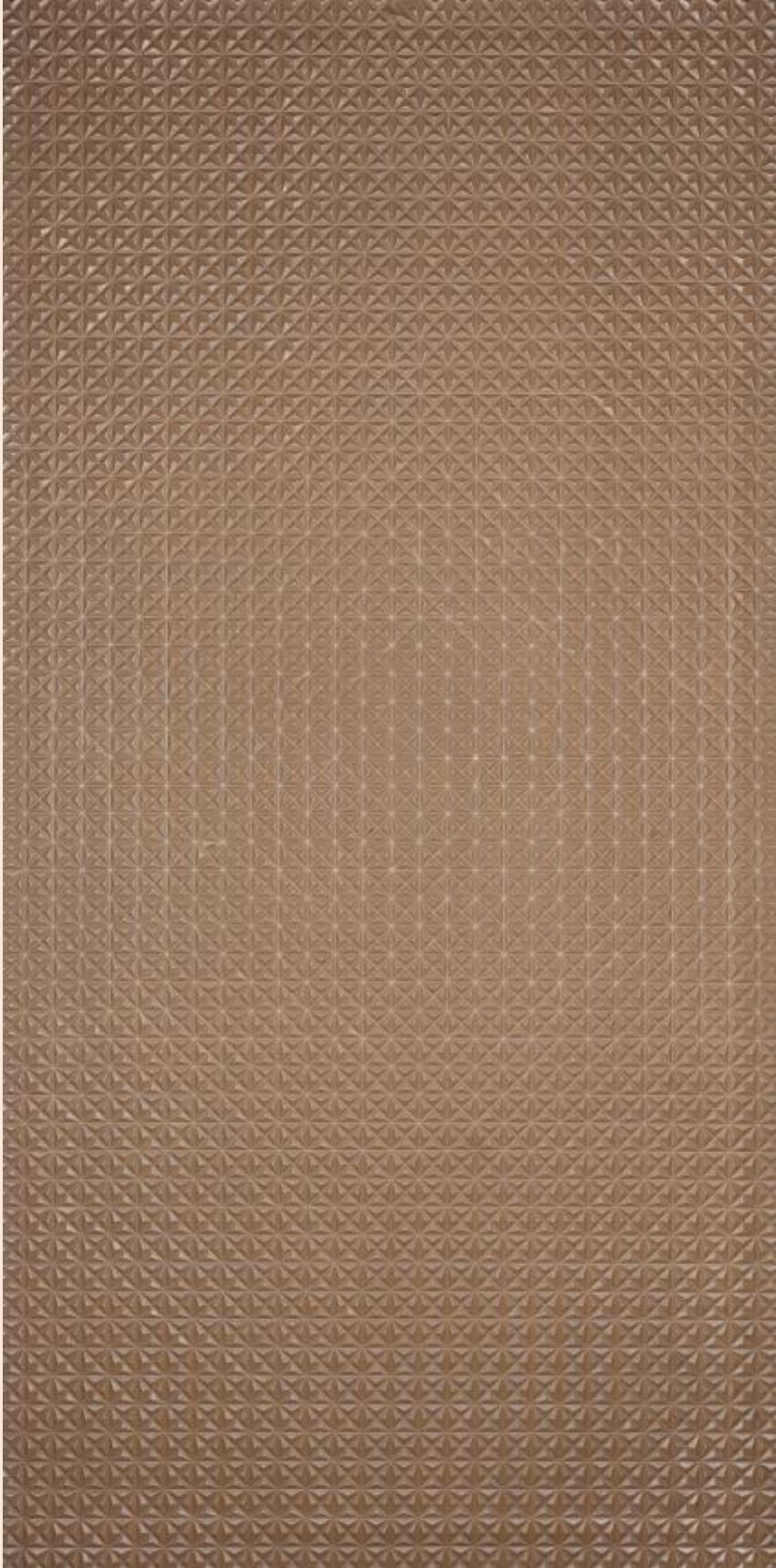


CHARLESTON-MAT-BZ-N



PRISMATIC-COPPER-NATURAL and BRONZE-DARK



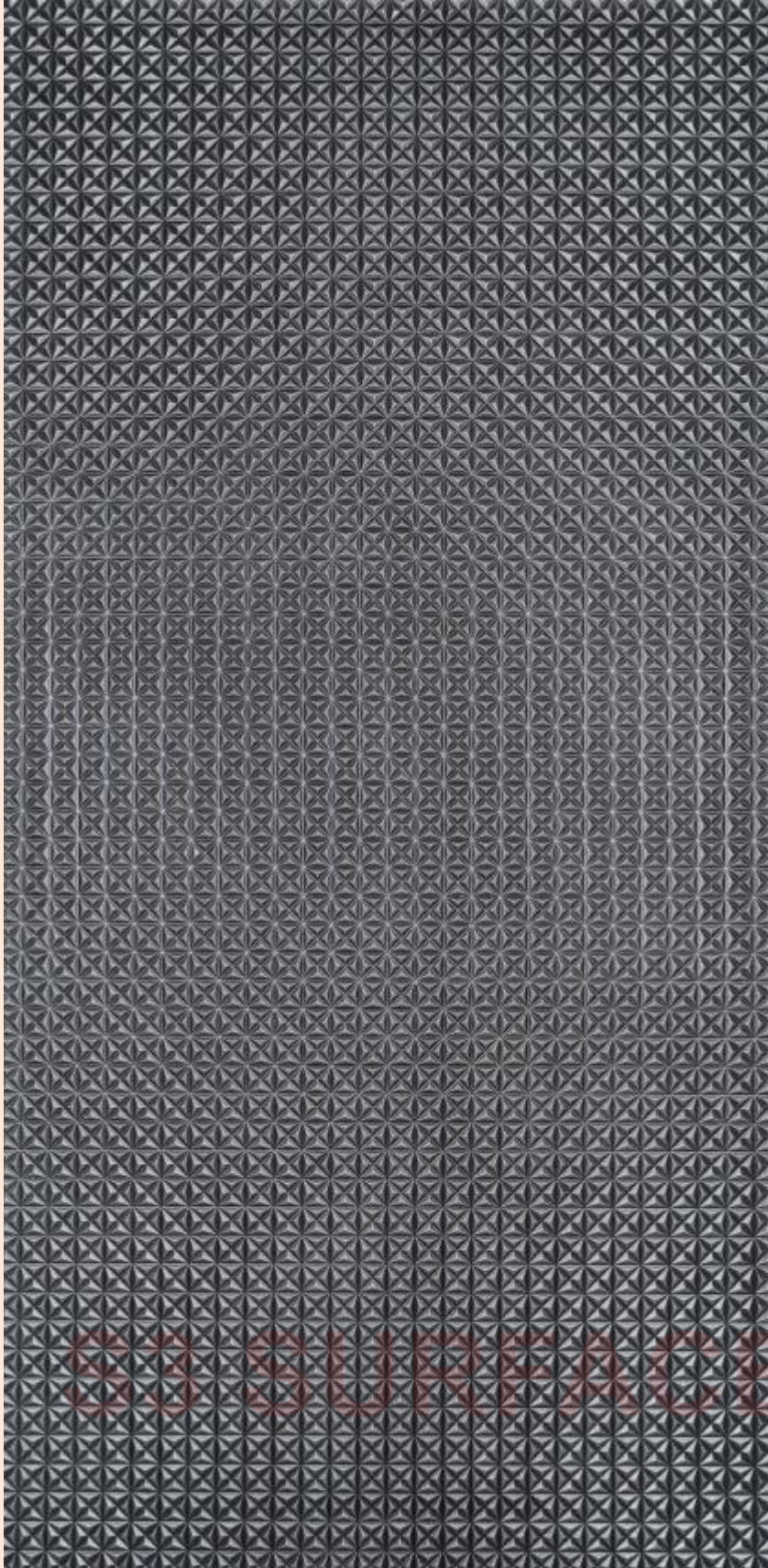


**PRISMATIC**\_BRONZE\_NATURAL\_SHEET



BRONZE\_NATURAL\_SAMPLE-SWATCH





**PRISMATIC**\_ALUMINIUM\_DARK\_SHEET



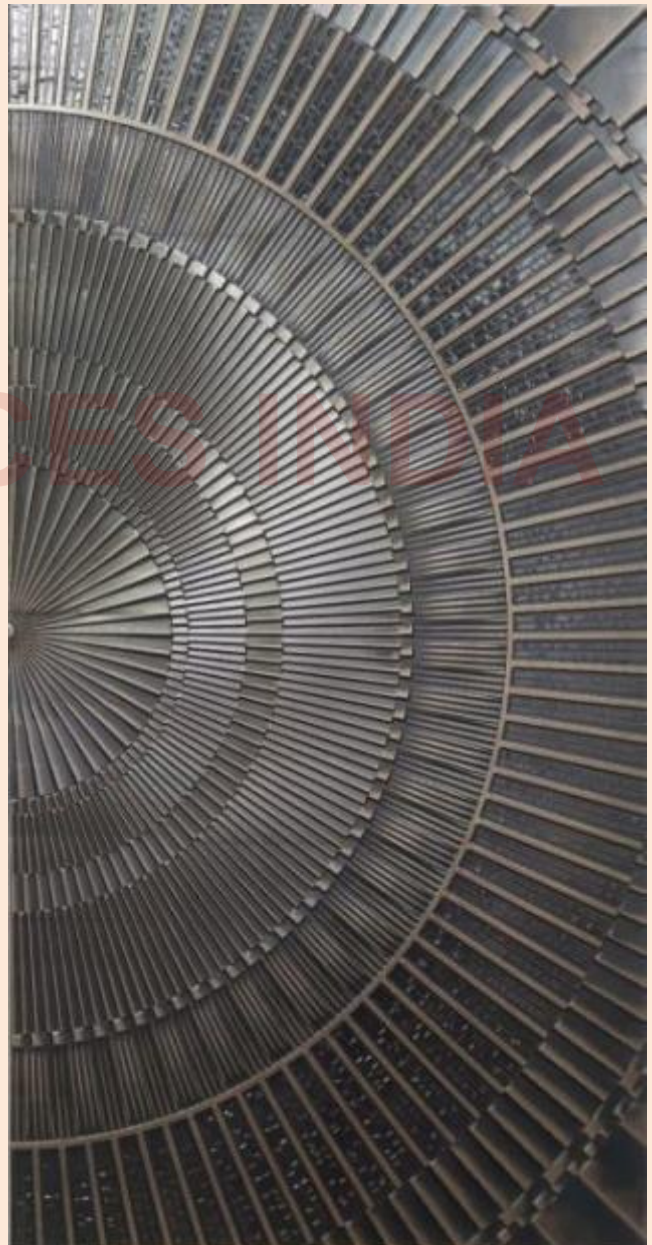
ALUMINUM\_DARK\_SAMPLE-SWATCH



## DOOR SURFACING SHEET



**SOLARIS\_BONDED-BRONZE\_DARK\_4 Feet x 10 Feet**



**SOLARIS\_BONDED-BRONZE\_DARK\_4 Feet x 8 Feet**





Architectural Door – Main Entrance Door of Bungalow in Metallic Bonded Bronze with Dark patina finish in Solaris Pattern



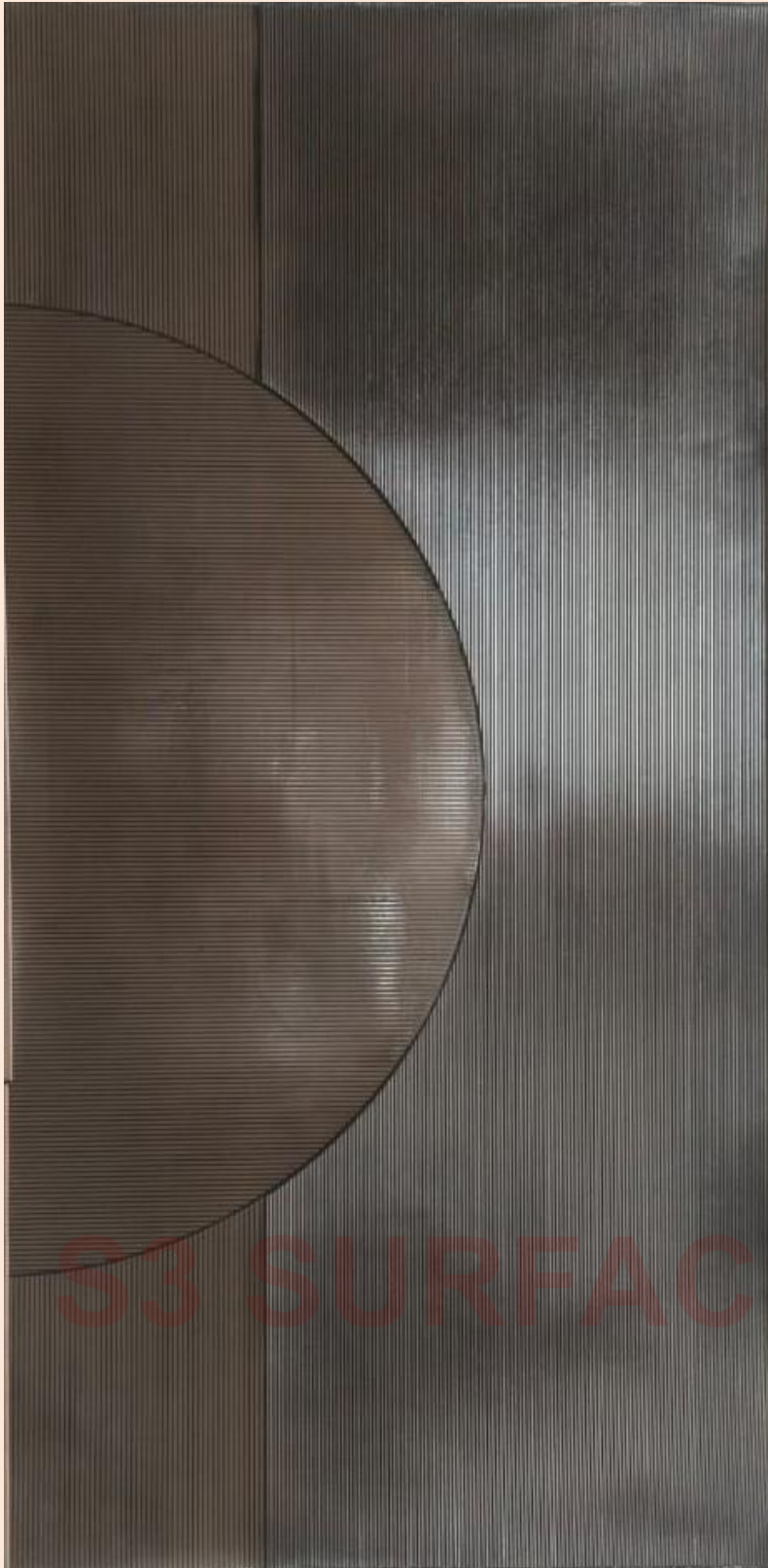


"ARCHITECTURAL DOUBLE LEAF DOOR" or "FEATURE WALL"

Metallic Bonded Bronze with Antique Dark finish in Solaris pattern

Sizes: 8'x8', 8'x10', 8'x18'

## DOOR SURFACING SHEET



**ECLIPSIS, A DOOR PATTERN\_BRONZE\_DARK\_SHEET**



**BRONZE\_DARK\_SAMPLE-SWATCH**



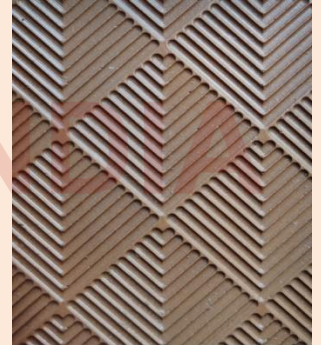
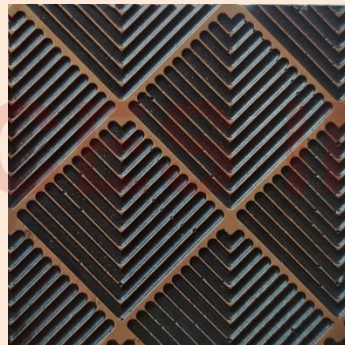
## DOOR SURFACING SHEET



**ECLIPSIS, A DOOR PATTERN**\_ALUMINUM\_DARK\_SHEET



ALUMINUM\_DARK\_SAMPLE-SWATCH



CHEVRON\_BRONZE\_DARK\_&\_NATURAL\_SAMPLE-SWATCHES





**CREEPER\_BRONZE\_NATURAL\_SHEET**



**BRONZE\_NATURAL\_SAMPLE-SWATCH**



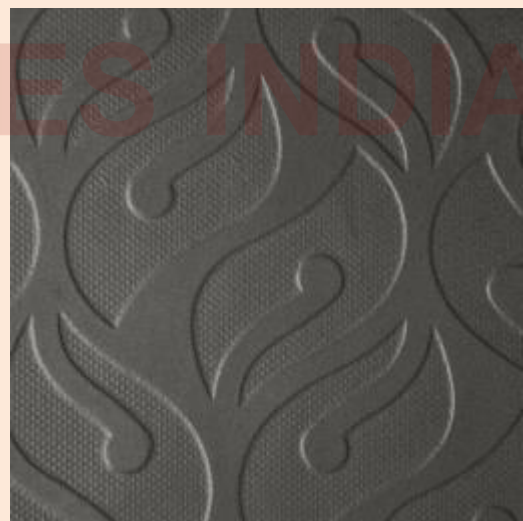
**CREEPER\_BRONZE\_DARK**



**CREEPER\_ALUMINIUM\_DARK**



**CUTTER\_ALUMINIUM\_NATURAL**



**CUTTER\_NICKEL-SILVER\_NATURAL**



**FABRIC\_ALUMINIUM\_NATURAL**



**FABRIC\_BRONZE\_DARK**





**FABRIC\_BRONZE\_NATURAL\_SHEET**



**BRONZE\_NATURAL\_SAMPLE-SWATCH**



**PETAL\_BRONZE\_NATURAL\_SHEET**



**BRONZE\_NATURAL\_SAMPLE-SWATCH**





**PETAL\_BRONZE\_DARK**



**PETAL\_ALUMINIUM\_DARK**

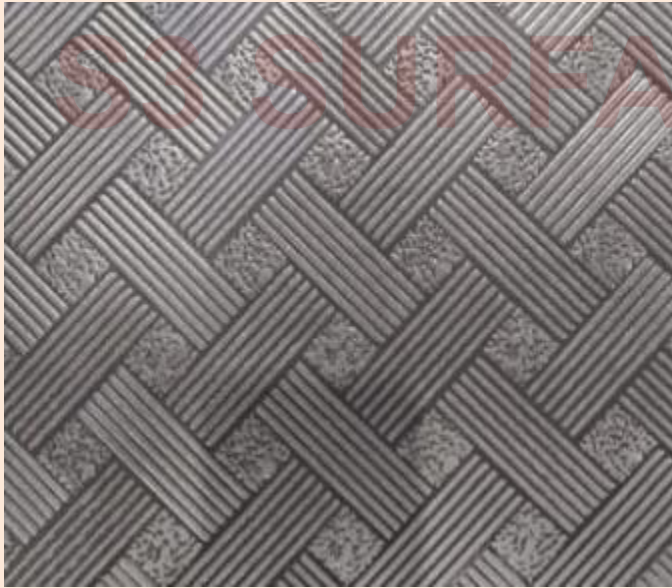


**WOVEN\_BRONZE\_NATURAL**

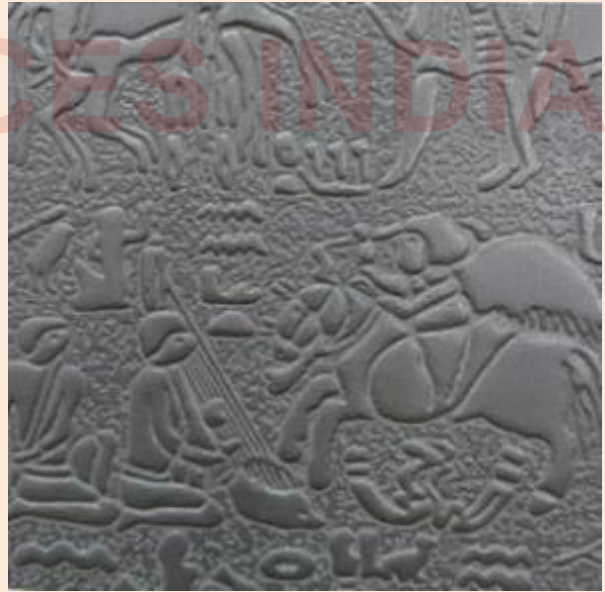


**WOVEN\_BRONZE\_DARK**





**WOVEN\_ALUMINIUM\_DARK**



**EGYPTIAN\_ALUMINIUM\_NATURAL**

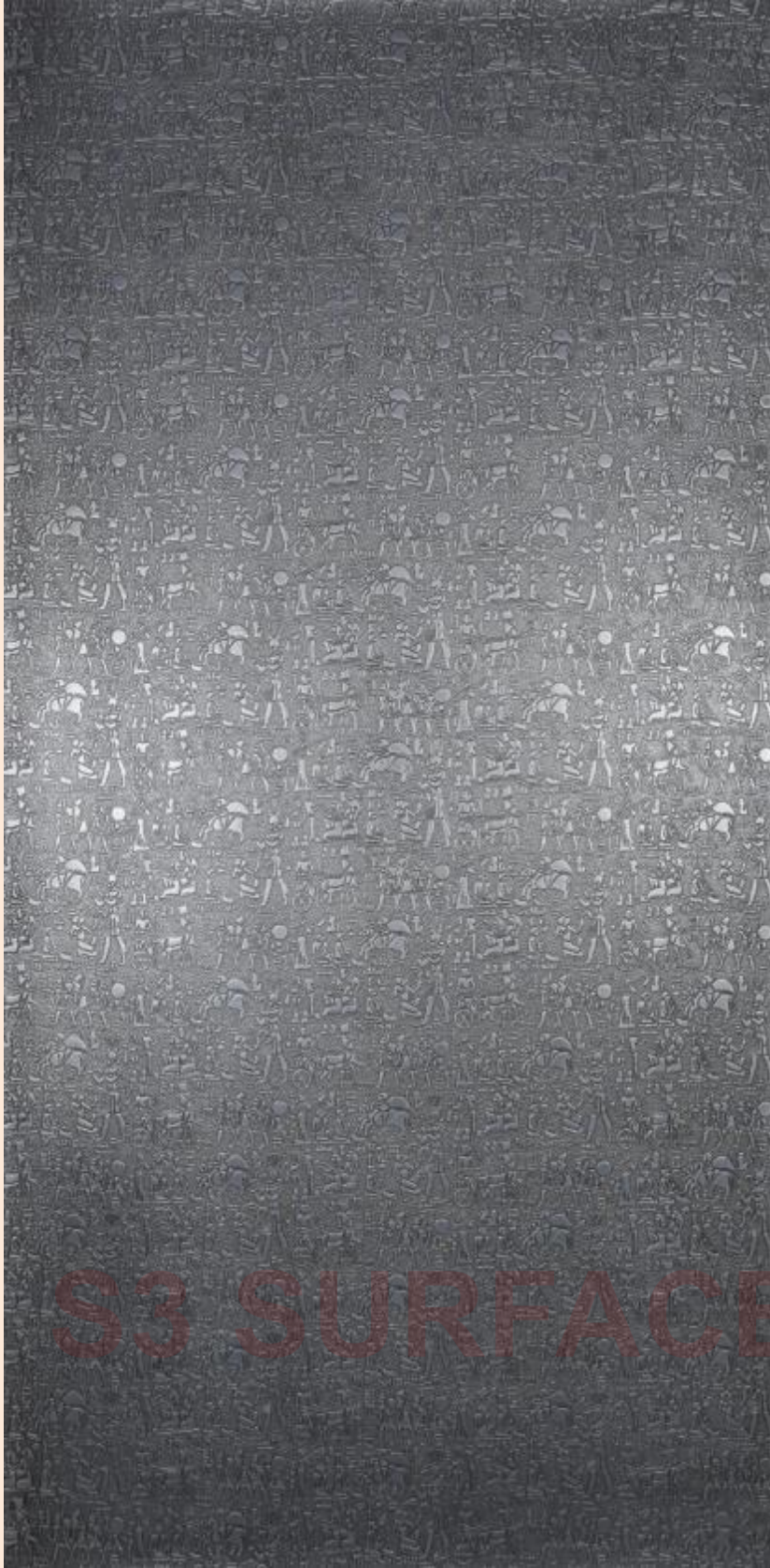


**EGYPTIAN\_BRONZE\_DARK**



**EGYPTIAN\_BRONZE\_NATURAL**





**EGYPTIAN**\_ALUMINIUM\_DARK\_SHEET



ALUMINUM\_DARK\_SAMPLE-SWATCH

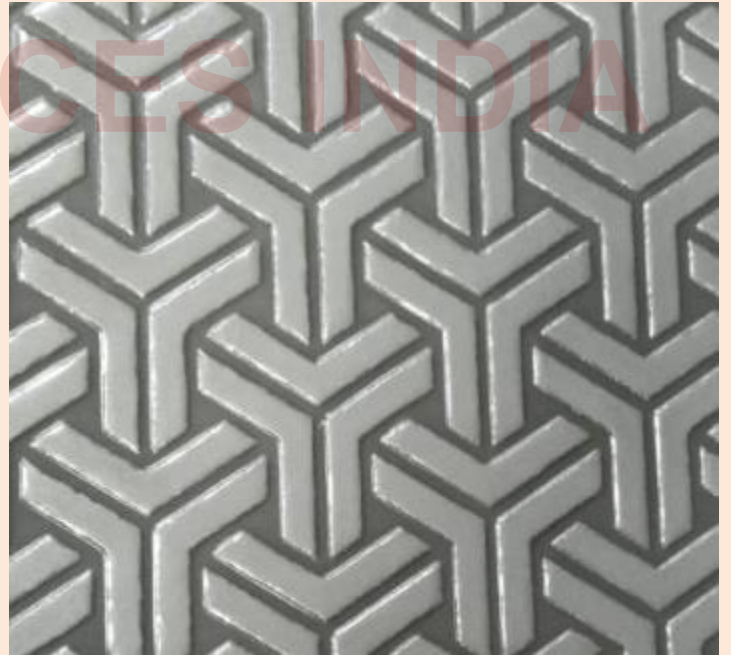


**WEB\_BRONZE\_NATURAL\_SAMPLE-SHEET**

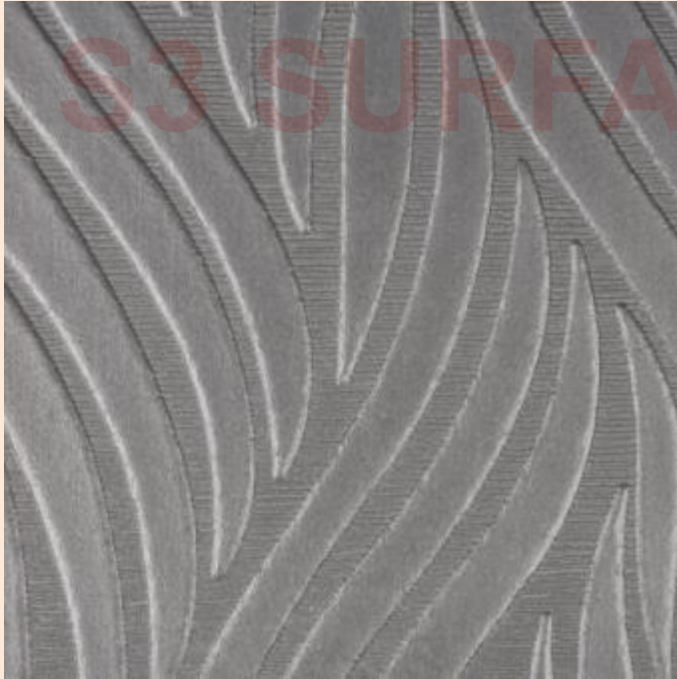


**BRONZE\_NATURAL\_SAMPLE-SWATCH**

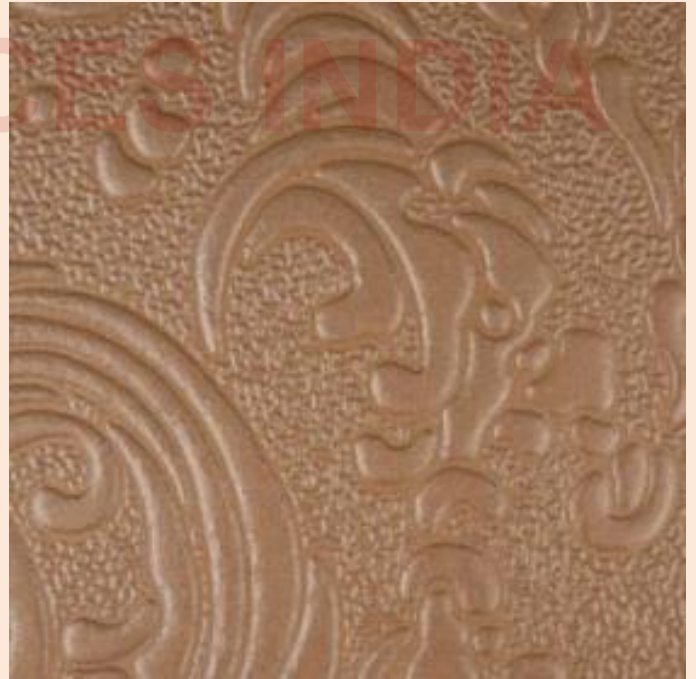


**WEB\_BRONZE\_DARK****WEB\_ALUMINIUM\_DARK****TREAD\_BRONZE\_DARK****TREAD\_ALUMINIUM\_DARK**





**FROND\_ALUMINIUM\_NATURAL**



**FEATHER\_BRONZE\_NATURAL**



**FROND\_BRONZE\_DARK**



**FROND\_BRONZE\_NATURAL**





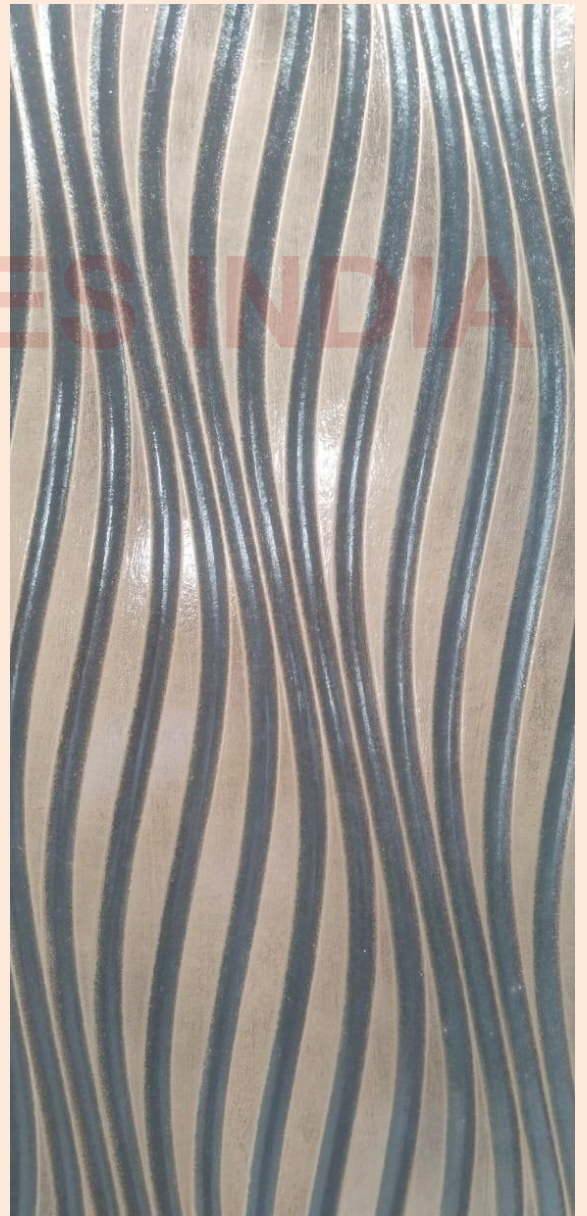
**FROND\_ALUMINIUM\_DARK\_SHEET**



**ALUMINUM\_NATURAL\_SAMPLE-SWATCH**



THAR\_BRONZE\_DARK\_SHEET



BRONZE\_DARK\_SAMPLE-SWATCH



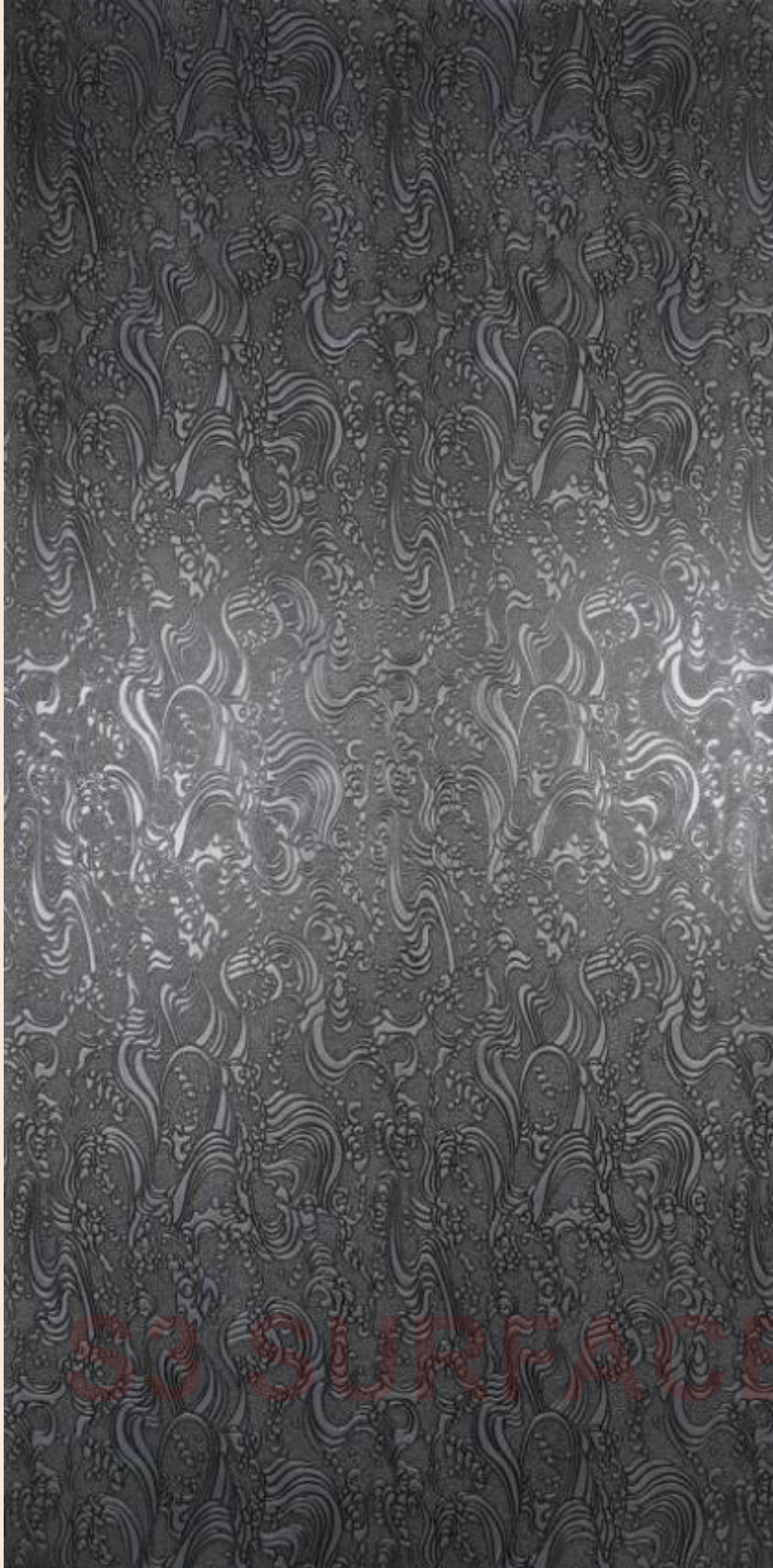


**FEATHER\_BRONZE\_DARK\_SHEET**



**BRONZE\_DARK\_SAMPLE-SWATCH**





**FEATHER\_ALUMINIUM\_DARK\_SHEET**



**ALUMINUM\_DARK\_SAMPLE-SWATCH**





**HONEYCOMB**\_BRONZE\_DARK\_SHEET



BRONZE\_DARK & \_NATURAL\_SAMPLE-SWATCHES

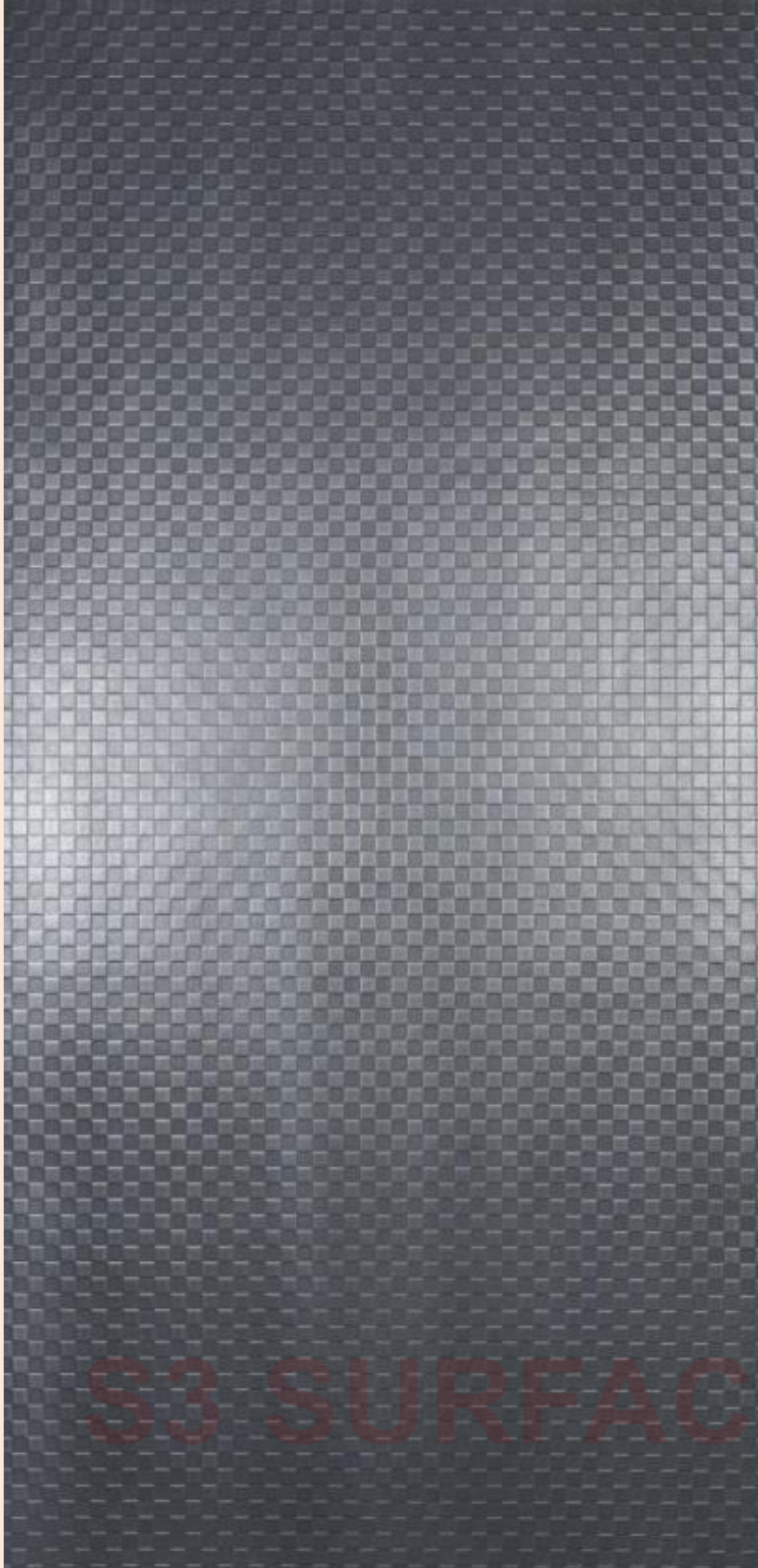


**CHESS\_BRONZE\_NATURAL\_SHEET**



**BRONZE\_NATURAL\_SAMPLE-SWATCH**

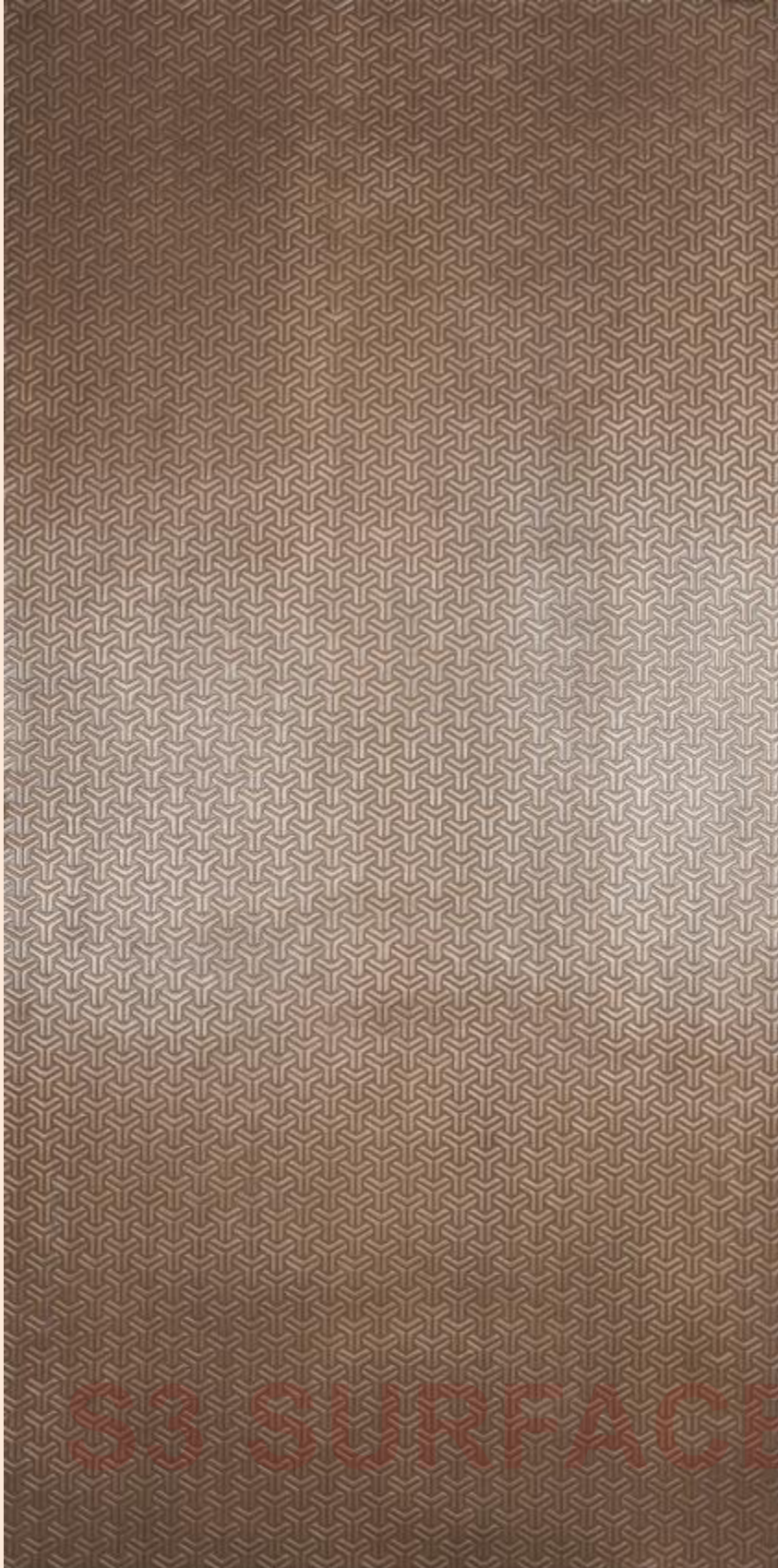




**CHESS**\_ALUMINIUM\_NATURAL\_SHEET



ALUMINIUM\_NATURAL\_SAMPLE-SWATCH

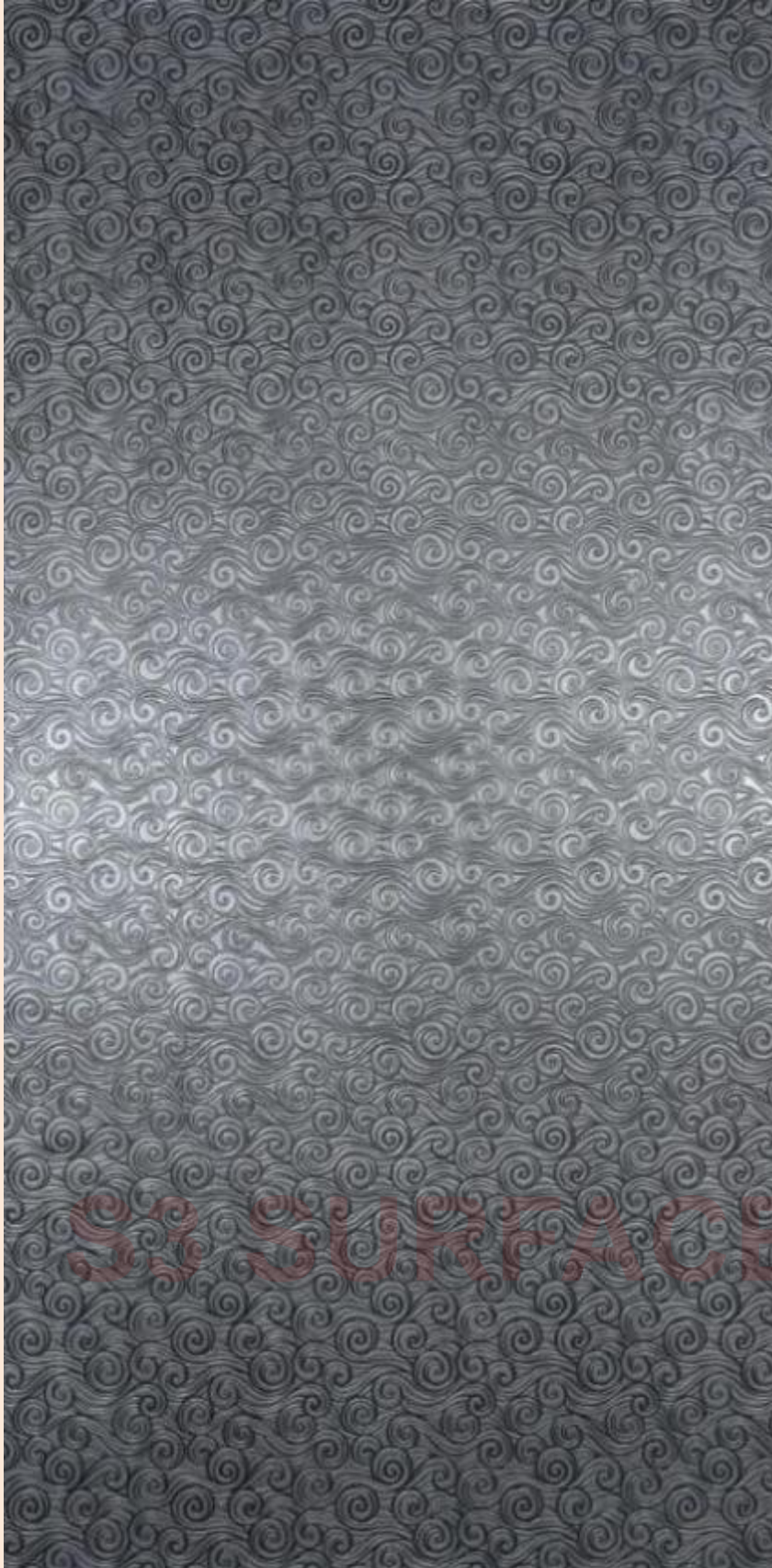


**TREAD\_BRONZE\_NATURAL\_SHEET**

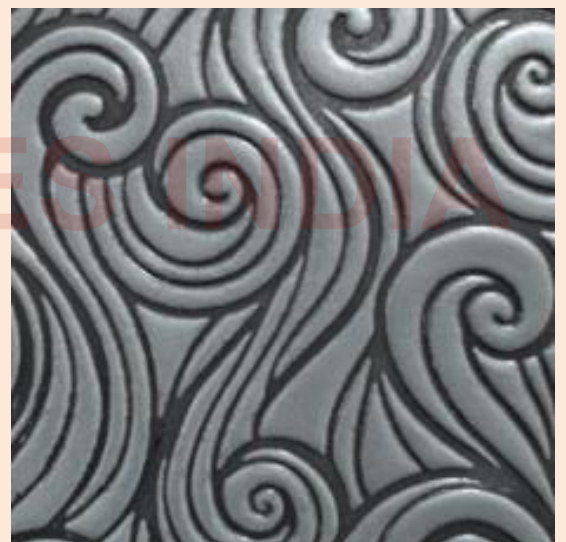


**BRONZE\_NATURAL\_SAMPLE-SWATCH**

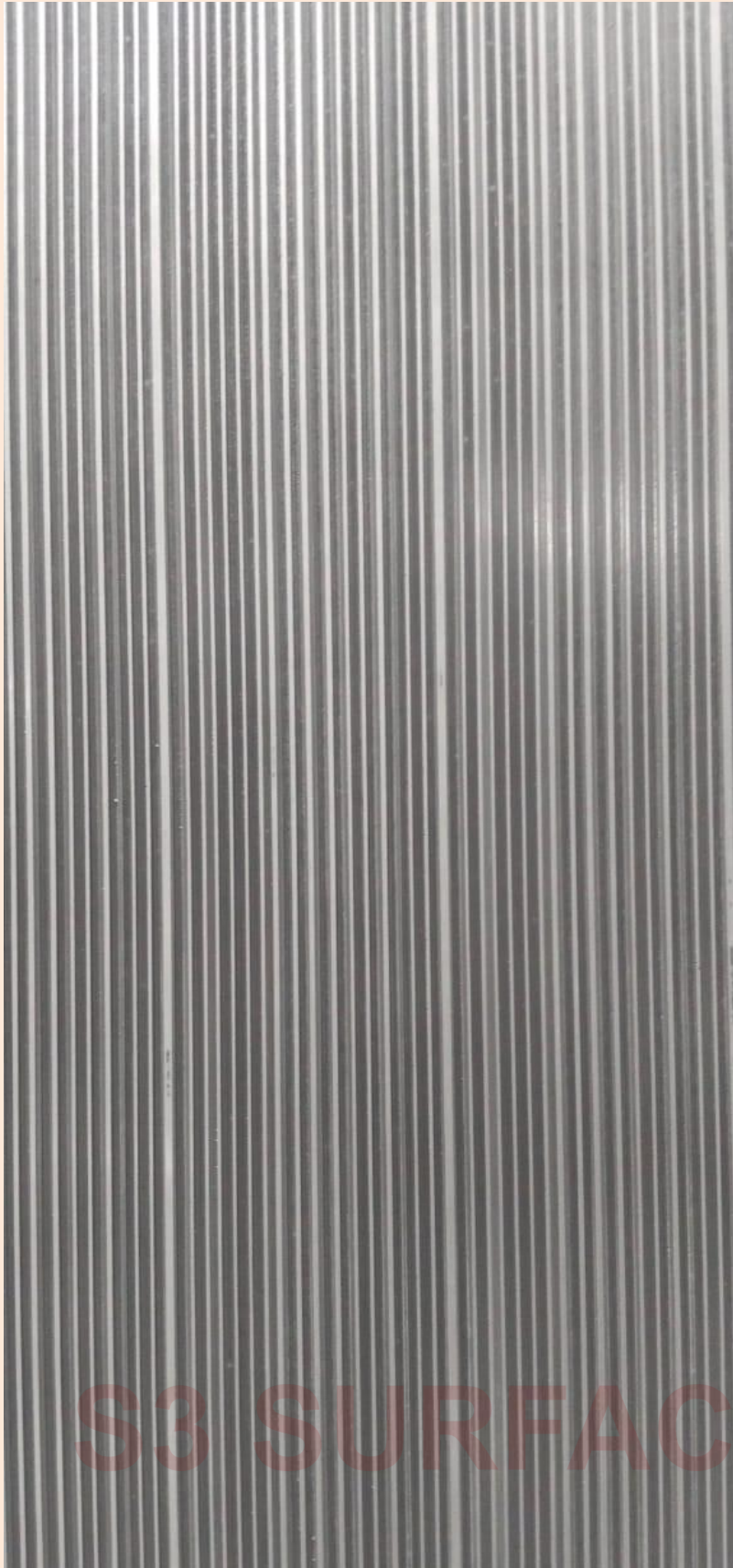




**WHIRL\_ALUMINIUM\_DARK\_SHEET**



**ALUMINUM\_DARK\_SAMPLE-SWATCH**



**GROOVED\_ALUMINIUM\_DARK\_SHEET**



**BRONZE & ALUMINUM\_DARK\_SAMPLE-SWATCHES**



## B) CRYSTAL-QUARTZ BONDED S3 SURFACES™

**Crystal-Quartz Bonded** is a surfacing sheet cast by blending crystalised advanced quartz material granules with a FRP matrix to create a sheet product that is flexible, lightweight, extremely durable, easy to clean and has low maintenance.

The standard RAL colour shades of Crystal Quartz Bonded are Bianca-White and Carbone-Charcoal. For larger quantities, the surfacing sheets can be made available in any custom RAL colour shades.



\*\*\*Please note that -

- 1) All the images shown in this document are to understand the pattern orientation.
- 2) Actual finishes or colours may vary slightly from those shown in this document because different computer monitors & mobile screens will render colours differently. Hence, please refer to the physical samples for the actual pattern/texture/design, colour & finish. While every effort is made to maintain consistency in finish colour, due to the nature of the manufacturing process of Metallic Bonded Surfaces, slight variation can occur.
- 3) The surfaces are handcrafted by our artists. As a result, every surface may have minor changes. Please do not consider them as flaws rather as artistic variations.
- 4) The physically small-sized marketing samples are mounted to an aluminium backing for presentation purposes only. This aluminium backing material does not appear on the final product.

PATTERN & CODE	TYPE (A/B/C)	CRYSTAL-QUARTZ COLOUR OPTIONS	THICKNESS (Inches & mm)	STANDARD SHEET SIZE
BEAD-BLAST 025	STANDARD (B)	BIANCA-WHITE and CARBONE-CHARCOAL	0.138" (3.5 mm)	48" x 96"/120" (1219 x 2438/3048 mm)
CHARLESTON-MAT 026	STANDARD (B)	BIANCA-WHITE and CARBONE-CHARCOAL	0.138" (3.5 mm)	36" x 120" (915 x 3048 mm)
CHESS 027	STANDARD (A)	BIANCA-WHITE and CARBONE-CHARCOAL	0.120" (3 mm)	47.35" x 95.60" (1203 x 2428 mm)
CHEVRON 028	STANDARD (A)	BIANCA-WHITE and CARBONE-CHARCOAL	0.120" (3 mm)	48" x 120" (1219 x 3048 mm)
CREEPER 029	STANDARD (A)	BIANCA-WHITE and CARBONE-CHARCOAL	0.120" (3 mm)	48" x 96" (1219 x 2438 mm)
CUTTER 030	STANDARD (A)	BIANCA-WHITE and CARBONE-CHARCOAL	0.120" (3 mm)	48" x 96" (1219 x 2438 mm)
ECLIPSIS, a Door Pattern 031	STANDARD DOOR PATTERN (Left & Right Hand Sheets) (C)	BIANCA-WHITE and CARBONE-CHARCOAL	0.260" (6.5 mm)	48" x 96" (1219 x 2438 mm)
EGYPTIAN 032	STANDARD (A)	BIANCA-WHITE and CARBONE-CHARCOAL	0.120" (3 mm)	48" x 96" (1219 x 2438 mm)
FABRIC 033	STANDARD (A)	BIANCA-WHITE and CARBONE-CHARCOAL	0.120" (3 mm)	48" x 96" (1219 x 2438 mm)
FEATHER 034	STANDARD (A)	BIANCA-WHITE and CARBONE-CHARCOAL	0.120" (3 mm)	48" x 96" (1219 x 2438 mm)
FLUTED 035	STANDARD (B)	BIANCA-WHITE and CARBONE-CHARCOAL	0.138" (3.5 mm)	48" x 120" (1219 x 3048 mm)
FROND 036	STANDARD (A)	BIANCA-WHITE and CARBONE-CHARCOAL	0.120" (3 mm)	48" x 96" (1219 x 2438 mm)
GRASS-TUNDRA 037	STANDARD (B)	BIANCA-WHITE and CARBONE-CHARCOAL	0.138" (3.5 mm)	48" x 120" (1219 x 3048 mm)
GROOVED 038	STANDARD (A)	BIANCA-WHITE and CARBONE-CHARCOAL	0.120" (3 mm)	48" x 96" (1219 x 2438 mm)
HONEYCOMB 039	STANDARD (B)	BIANCA-WHITE and CARBONE-CHARCOAL	0.220" (5.5 mm)	48" x 96" (1219 x 2438 mm)
LOUVERS 040	STANDARD (B)	BIANCA-WHITE and CARBONE-CHARCOAL	0.155" (3.9 mm)	48" x 96" (1219 x 2438 mm)
PETAL 041	STANDARD (A)	BIANCA-WHITE and CARBONE-CHARCOAL	0.120" (3 mm)	48" x 96" (1219 x 2438 mm)
PRISMATIC 042	STANDARD (C)	BIANCA-WHITE and CARBONE-CHARCOAL	0.260" (6.5 mm)	48" x 96" (1219 x 2438 mm)
SOLARIS, a Door Pattern 043	STANDARD DOOR PATTERN (Left & Right-hand sheets) (C)	BIANCA-WHITE and CARBONE-CHARCOAL	0.320" (8.0 mm)	48" x 96"/120" (1219 x 2438 / 3048 mm)
THAR 044	STANDARD (A)	BIANCA-WHITE and CARBONE-CHARCOAL	0.1147" (3.7 mm)	48" x 96" (1219 x 2438 mm)
TREAD 045	STANDARD (A)	BIANCA-WHITE and CARBONE-CHARCOAL	0.120" (3.0 mm)	48" x 96" (1219 x 2438 mm)
WAVES (CROSS) 046	STANDARD (C)	BIANCA-WHITE and CARBONE-CHARCOAL	0.236" (6.5 mm)	48" x 96" (1219 x 2438 mm)
WAVES (Horizontal-1) 047	STANDARD (C)	BIANCA-WHITE and CARBONE-CHARCOAL	0.256" (6.5 mm)	48" x 96" (1219 x 2438 mm)
WAVES (Horizontal-2) 048	STANDARD (C)	BIANCA-WHITE and CARBONE-CHARCOAL	0.256" (6.5 mm)	48" x 96" (1219 x 2438 mm)
WAVES (VERTICAL) 049	STANDARD (C)	BIANCA-WHITE and CARBONE-CHARCOAL	0.256" (6.5 mm)	48" x 96" (1219 x 2438 mm)

## **MATERIAL SPECIFICICATIONS**

The chart below shows thickness and sheet size dimensions for all Crystal Quartz Bonded S3 Surfaces™ castings.

Dimensional tolerances are –

- a) For the Thickness of sheets up to 4.5 mm, +/- 0.5 mm & above 4.5 mm, +/- 1 mm.
- b) For sheet Width & Length, +/- 3 mm.

For backed castings, simply add your preferred backer thickness to the casting thickness shown.

Castings may be specified in any sheet size up to the maximum size indicated in the chart.

## **ENVIRONMENTAL CONSIDERATIONS**

For detailed environmental impact information, please refer to the Product Environmental Data Sheet - Crystal Quartz Bonded S3 Surfaces™.

## **HOW TO SPECIFY AND ORDER**

To order a product, please indicate pattern, type, colour, size and quantity.



**PATTERNS AND COLOUR OPTIONS:**



**CHESS\_BIANCA-WHITE\_QUARTZ**



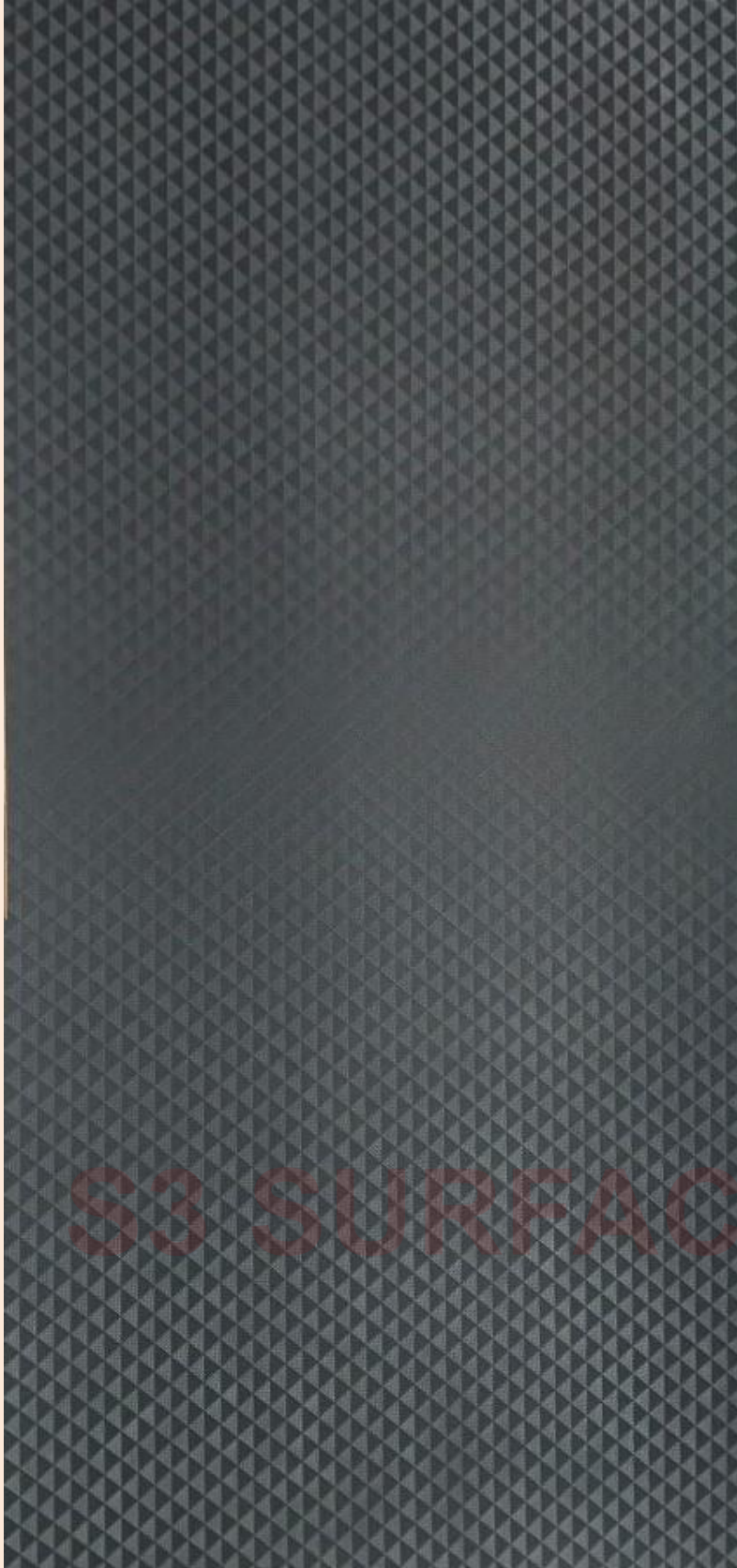
**CUTTER\_CARBONE-CHARCOAL\_QUARTZ**



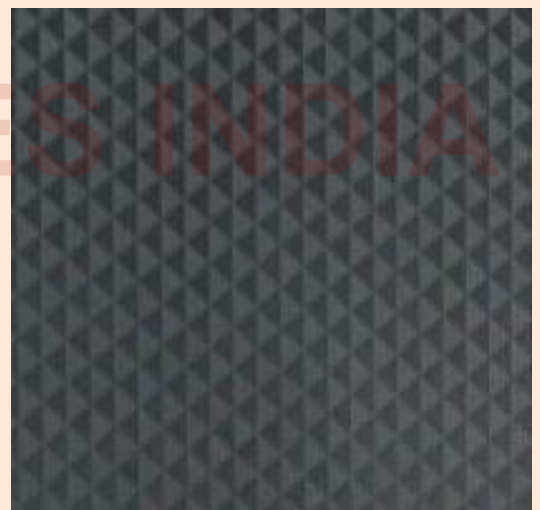
**CREEPER\_CARBONE-CHARCOAL\_QUARTZ**



**BEAD-BLAST\_BIANCA-WHITE\_QUARTZ**

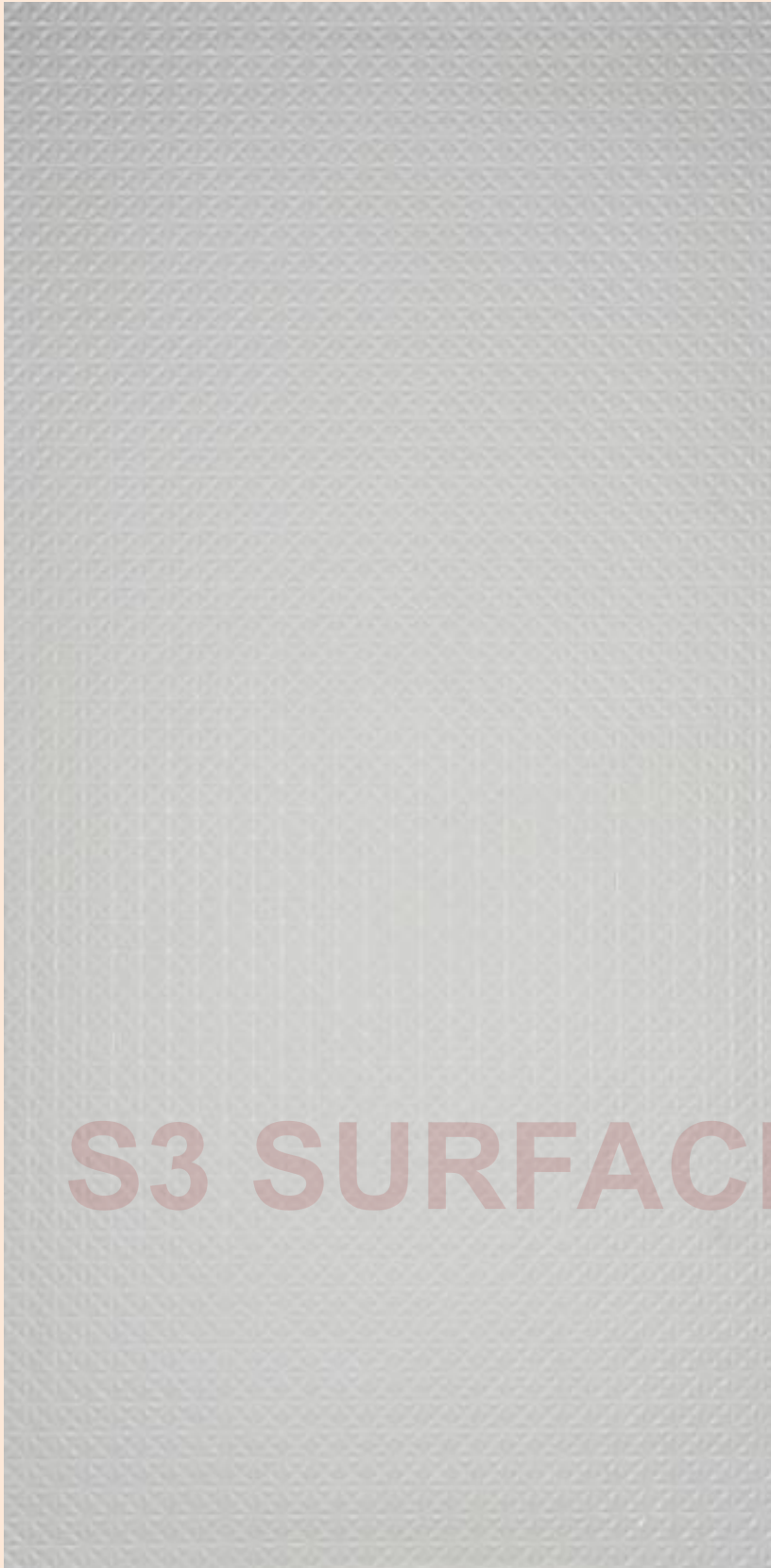


**CHEVRON\_CARBONE-CHARCOAL\_QUARTZ\_SHEET**



**SAMPLE-SWATCH**





**PRISMATIC**\_BIANCA-WHITE\_QUARTZ\_SHEET



SAMPLE-SWATCH



S3 SURFACES INDIA



**WAVES-HORIZONTAL(Option1)\_BIANCA-WHITE\_QUARTZ\_SHEET**

**SAMPLE-SWATCH**





**WAVES-HORIZONTAL(Option2)\_BIANCA-WHITE\_QUARTZ\_SHEET**



**SAMPLE-SWATCH**



S3 SURFACES INDIA

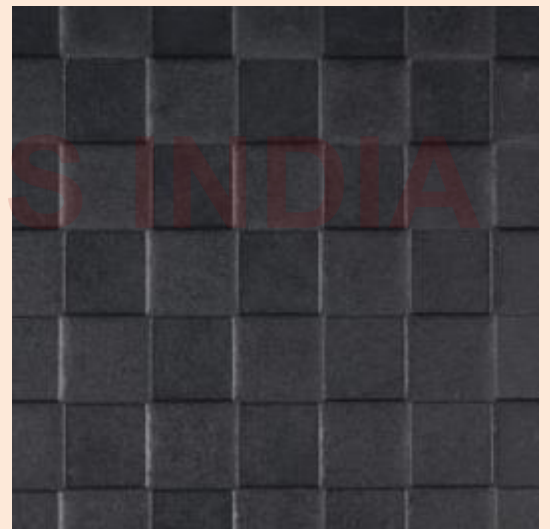
**HONEYCOMB\_BIANCA-WHITE\_QUARTZ\_SHEET**

**SAMPLE-SWATCH**





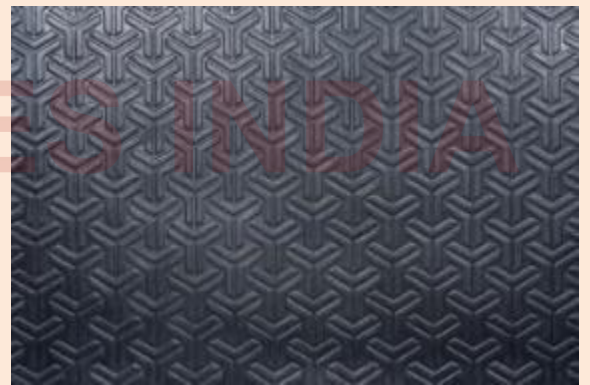
**CHESS\_CARBONE-CHARCOAL\_QUARTZ\_SHEET**



**SAMPLE-SWATCH**



**TREAD\_CARBONE-CHARCOAL\_QUARTZ\_SHEET**

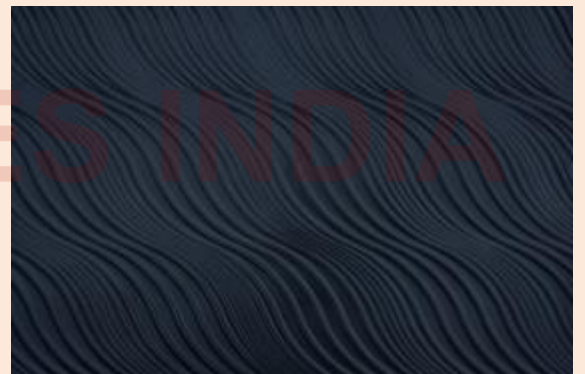


**SAMPLE-SWATCH**

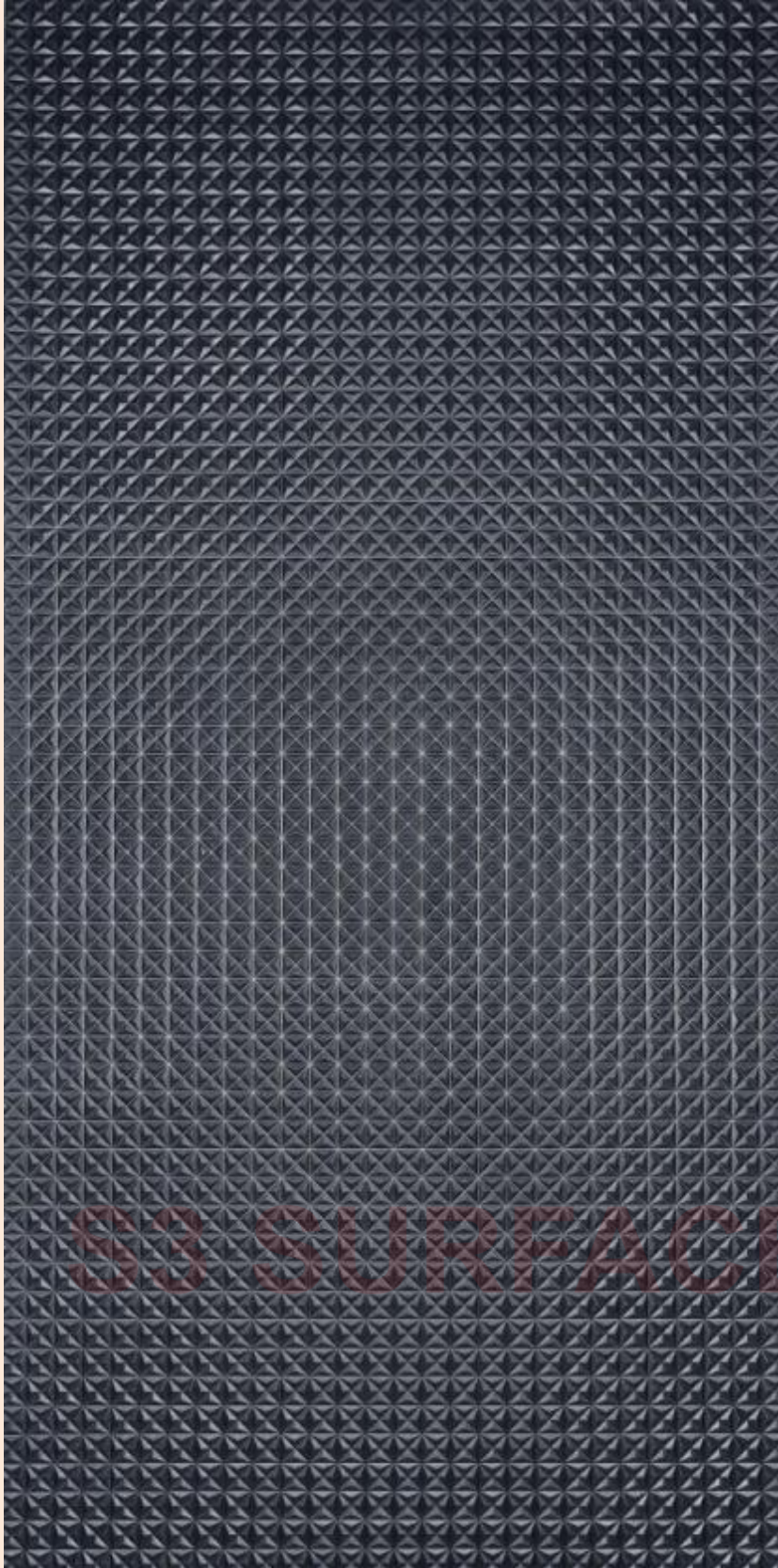




**WAVES-CROSS**\_CARBONE-CHARCOAL\_QUARTZ\_SHEET



SAMPLE-SWATCH

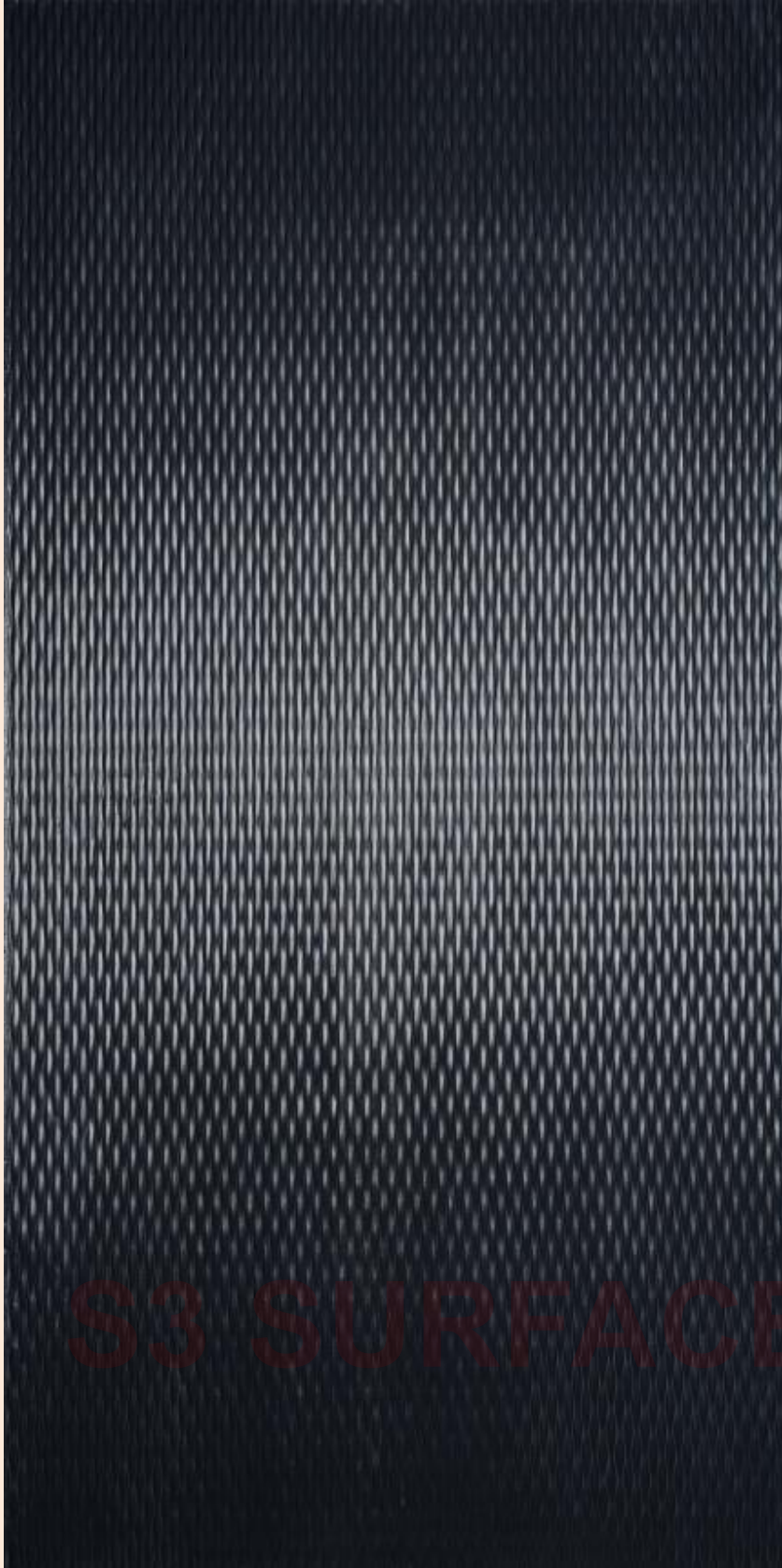


**PRISMATIC\_CARBONE-CHARCOAL\_QUARTZ\_SHEET**

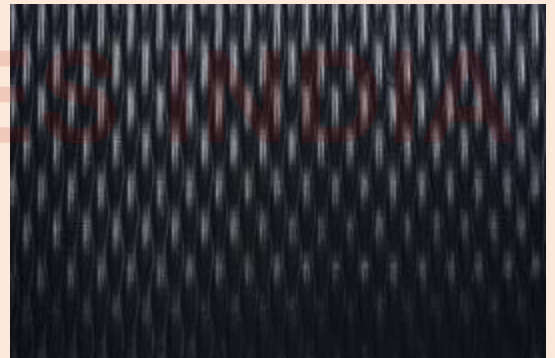


**SAMPLE-SWATCH**





**HONEYCOMB\_CARBONE-CHARCOAL\_QUARTZ\_SHEET**



**SAMPLE-SWATCH**



**WAVES-VERTICAL\_BIANCA-WHITE\_QUARTZ\_SHEET**



**SAMPLE SWATCH**





S3 SURFACES INDIA



**WAVES-CROSS**\_BIANCA-WHITE\_QUARTZ-SHEET

SAMPLE SWATCH

## **SERVICES PROVIDED BY S3 SURFACES INDIA**

- Design, Manufacturing & supply of Architectural Decorative Bonded 3D Surfaces & Custom Design Systems
- Packaging and Shipping
- Guidance for Installations

## **WHY S3 SURFACES™**

### **Product Features:**

**1) Aesthetics:** Hand-crafted, textured, and unique cast-composite surfacing solutions. The colours are integral, neither superficial like charcoal sheets from the market. Also, unlike surface-coated liquid metal sheets and surface-painted deco sheets.

**2) Finished Product:** Factory-finished, easy to cut with wood tools, ready to clad, or installed directly at the site on any substrate panel by a professional carpenter.

**3) Durability:** Extremely durable, long-lasting, flexible, lightweight, non-toxic, 100% waterproof, termite-proof, borer-proof, fire-retardant, UV-grade, and high-performance surfacing solutions. Additionally, they exhibit exceptional abrasion, wear, and scratch resistance.

**4) Versatility:** A combination of modern minimalist & contemporary patterns ranging from subtle to bold, from lightly textured to organic, from intricate textures to refined geometrics to designs that echo nature. They suit various architectural applications, from doors, walls, and columns to elevator interior panels.

**5) Customization:** Various patterns and finishes make a striking design statement, offering endless design possibilities for interior spaces where visual richness and luxury are desired. We also develop, manufacture & supply bespoke custom textured surface designs, tailoring to unique aesthetic and client specifications.

**6) Sustainability:** It is at the core of our process, with a focus on using recycled, recyclable, and eco-conscious materials and practices, offering a sustainable solution for luxury and high-traffic environments. The longer shelf life reduces the carbon footprint & generates no scrap, which helps satisfy Green Building Standards and Credits.

**7) Economy:** A very long shelf life extends the structural life of a property, making it cheaper in the long run than comparable products.

**8) Care and Maintenance:** While minimal maintenance is required, bonded surfaces benefit from periodic cleaning & remain dust-free by wiping with a wet white cloth.

## **STANDARD PACKAGING METHOD**

- All the products are packed systematically in wooden crates and shipped to the work site as per the Client's instructions.
- The installation work scope is agreed as per discussions with the client. If the client or their project management team will perform the necessary installation and site work, the products are supplied with a 'Do's & Don'ts' instruction sheet. The essential guidance is also provided.
- In case product installation is included with supply terms, then the necessary installation work is planned with our own skilled manpower or from our approved installation contractor's manpower under our own supervision, with due coordination and receipt of required site permissions from the client.



## **STANDARD INSTALLATION PROCEDURE**

The Bonded Surfaces sheets are easy to cut with standard woodworking tools and can be installed easily.

### **Steps to follow at the site during installation of Bonded S3 Surfaces™ sheets:**

- Build substrate base wall with either aluminium channels or plywood strips.
  - Clean substrate surface to remove oil & dust particles.
  - Apply structural or construction adhesive on the substrate & Bonded Surface back.
  - Install sheets or panels with the use of spacers to maintain proper dimensions.
  - Use plywood strips for clamping, & Install trims or reveals.
- Now the installation is complete. Please view our installation video for more information.

## **SUSTAINABILITY**

We take our responsibility seriously, in observing best environmental practices, the utilisation & exploration of sustainable products, services & materials to add value. We are also associated with our continued efforts to move towards an improved environmental footprint.

- Products are made with 40-50% recyclable & non-toxic materials
- Products are manufactured with environmentally friendly processes with less waste
- Minimal maintenance effort
- Materials like wood planks, plywood, corrugated sheets & foam sheets used for packaging of Surfaces sheets for dispatch are reused & recycled
- Have a very long shelf life, which reduces carbon footprint & generates no scrap. Therefore cheaper in the long run than comparable products
- S3 Bonded Surfaces contributes toward satisfying Green Building Standards and Credits

## **APPLICATIONS OF S3 SURFACES**

S3 Bonded Surfaces offer a bold and sustainable solution for luxury & high-traffic environments where visual richness is desired. These Surfaces are used as skins and surfacing sheets and specified in various luxury Interiors and select exterior systems like architectural doors, wall panels & claddings, feature or highlighter walls, accent walls; wainscotings, counter facings, elevator cab interior panels, elevator doors & architraves; column covers, wardrobe & cabinet shutter panels, counter & desk fronts, space dividers, railing insets, custom fabrications, etc. across the interiors of upscale private residences, villas & bungalows, homestays, cafés/restaurants, convention centers, resorts, boutique and lifestyle hotels, commercial, retail and public spaces like malls, recreation halls, health & hospitality complexes, corporate offices and workplaces, IT parks, airports, metro rail stations, institutes, schools & colleges, gymnasiums, indoor sport clubs, club-houses, etc.



---

Please contact us below for more information, enquiries & orders.

## **S3 SURFACES INDIA PRIVATE LIMITED**

GSTIN: 27ABGCS6442L1ZV

MSME Registration Number: UDYAM-MH-26-0143636

CIN: U45201PN2021PTC203410

### Registered Office:

R-1/6, Shree Laxmivihar, Near Mahalaxmi Temple,  
Hadapsar, Pune – 411028. INDIA

Contact: +91 9370468182 / 9595305151

E-mail: [shantaram.pawar@s3-surfaces.com](mailto:shantaram.pawar@s3-surfaces.com)

Web Link: <https://www.s3-surfaces.com/>

