

CRYSTAL QUARTZ BONDED SURFACES

PRODUCT DATA SHEET (PDS)



*Please note that -

- 1) The images shown in this document are to understand the pattern orientation, & are of the sample swatches of size 4 inches x 4 inches.
- 2) Actual finishes or colours may vary slightly from those shown in this document or site because different computer monitors will render colours differently. Hence, please refer to physical samples for actual pattern/texture design, colour & finish.
- 3) The surfaces are handcrafted by our artists. As a result, every surface may have minor changes. Please do not consider them as flaws rather as artistic variations.
- 4) The physical samples are mounted on an aluminium backing for presentation purposes. This aluminium backing material does not appear on the final product.

CRYSTAL QUARTZ BONDED SURFACES

PRODUCT DATA SHEET (PDS)

Crystal QUARTZ Bonded is a surfacing sheet cast by blending crystallised quartz material with FRP matrix to create a product that is flexible, lightweight, extremely durable, easy to clean and low maintenance. The standard colours for Crystal Quartz Bonded are Bianca-White and Carbone-Charcoal.

CRYSTAL QUARTZ BONDED FEATURES:

- Suitable for interior applications for a modern and contemporary look.
- It is waterproof, UV grade, fire retardant and not easily scratchable.
- It is manufactured according to the specifications below and provided cut to size and ready to clad/install.

MATERIAL DESCRIPTION / SPECIFICATION:

COLOUR	PATTERN TYPE
<ul style="list-style-type: none"> • Available in 2 standard colours– Bianca-White and Carbone-Charcoal. • For larger quantities, custom RAL shade colours are made available. 	<ul style="list-style-type: none"> • Pattern means texture or design. Please refer images of patterns and the chart for thickness & size in the subsequent pages. • For larger quantity projects, enquiries for custom design patterns are welcome.

MATERIAL CONSTRUCTION, INSTALLATION DETAILS AND LIMITATIONS:

STANDARD & BACKED CASTINGS	INSTALLATION	LIMITATIONS
<ul style="list-style-type: none"> • Castings can be laminated to substrate/backer materials like wood (MDF, plywood or particleboard), WPC, ACP or metalsurfaces like Aluminium sealer sheet at your end or at the site by your skilled carpenter. • Application directly to drywall is not recommended. • Factory-laminated backed castings are recommended for application to interior walls. 	<ul style="list-style-type: none"> • Castings are typically installed using construction or contact adhesive, or glue. • Backed castings provide a greater range of installation options using either adhesives or fasteners. General installation instructions are available. 	<ul style="list-style-type: none"> • Crystal Quartz Bonded is intended to be an attractive and durable cladding material and should not be used as a structural element, nor should it be used to provide reinforcing or bracing for structural members. S3 Surfaces recommends either a minimum 1/8" (3mm) reveal or a trim profile between sheets. Exposed edges of casting should be protected by trim or other material.

CRYSTAL QUARTZ BONDED CHARACTERISTICS:

MAINTENANCE	CURVED PROFILE
<ul style="list-style-type: none"> • Fingerprints, smudges, dust and dirt can be removed by using a damp cloth with an ammonia-free and mild water-based cleaner. • Use of abrasives, chlorine and solvent-based cleaners, acids, steel-wool and wire brushes is to be strictly avoided. 	<ul style="list-style-type: none"> • The standard and slimline castings can generally be applied to the curved surface with radii below about 400 mm (16"). The slim castings are to be specially made available in 1.5 to 2 mm thickness. • Curve has to be in the same orientation as the pattern, & it can be in 2, 3 or 4 halves. • The minimum achievable radius varies depending on the thickness, pattern, and degree of relief.

PRODUCTS & APPLICATIONS:

Crystal Quartz Bonded are specified for walls, column covers, doors, elevator interiors, accents, wainscoting, custom fabrication or any application where modern, visual richness is desired. The table below shows standard S3 Surfaces products in which Crystal Quartz Bonded Surfaces are specified.

S3 INTERIOR WALL PANELS OR CLADDING SYSTEM	S3 COLUMN CLADDING AND COVER SYSTEM	S3 ARCHITECTURAL DOORS AND ELEVATOR INTERIORS PANELS	S3 INTERIOR AND EXTERIOR CLADDING AND FAÇADE SYSTEM
<ul style="list-style-type: none"> • All patterns are available as standard inset panel options in the S3 Wall System. 	<ul style="list-style-type: none"> • All patterns are available as standard inset panel options in the S3 Column Cladding or Cover System. 	<ul style="list-style-type: none"> • All patterns are available as standard inset panel options in S3 Elevator Interiors. 	<ul style="list-style-type: none"> • All patterns are available as standard panels with or without aluminium backing for the selected internal and external walls of front porch, balconies, sitouts, etc.

CRYSTAL QUARTZ BONDED SURFACES

PRODUCT DATA SHEET (PDS)

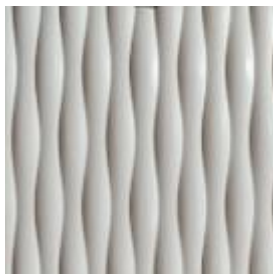
PATTERNS – CRYSTAL QUARTZ BONDED BIANCA-WHITE



CHESS



PRISMATIC



HONEYCOMB



WAVES (HORIZONTAL-1)



WAVES (HORIZONTAL-2)



WAVES (CROSS)



WAVES (VERTICAL)

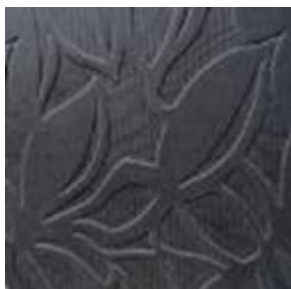


BEAD-BLAST

PATTERNS – CRYSTAL QUARTZ BONDED CARBONE-CHARCOAL



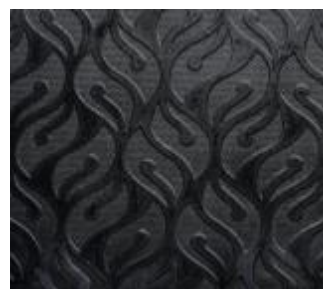
CHESS



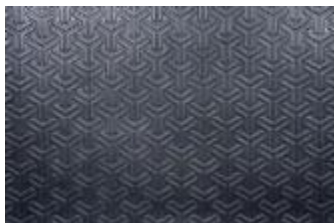
CREEPER



PRISMATIC



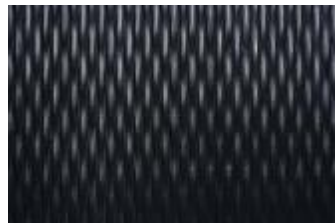
CUTTER



TREAD



WAVES (CROSS)



HONEYCOMB

CRYSTAL QUARTZ BONDED SURFACES

PRODUCT DATA SHEET (PDS)

MATERIAL SPECIFICATIONS:

The chart below shows thickness and sheet size dimensions for all Crystal Quartz Bonded Surfaces castings.

Dimensional tolerances are – a) For the Thickness of sheets up to 4.5 mm, +/- 0.5 mm & above 4.5 mm, +/- 1 mm.

b) For sheet Width & Length, +/- 3 mm.

For backed castings, simply add your preferred backer thickness to the casting thickness shown.

Castings may be specified in any sheet size up to the maximum size indicated in the chart.

PATTERN	CASTING TYPE	CRYSTAL QUARTZ COLOR	THICKNESS	STANDARD SHEET SIZE
BEAD-BLAST	SLIMLINE / STANDARD	BIANCA-WHITE and CARBONE-CHARCOAL	0.100" / 0.138" (2.5 / 3.5 mm)	48" x 120" (1219 x 3048 mm)
CHARLESTON-MAT	STANDARD	BIANCA-WHITE and CARBONE-CHARCOAL	0.138" (3.5 mm)	36" x 120" (915 x 3048 mm)
CHESS	STANDARD	BIANCA-WHITE and CARBONE-CHARCOAL	0.138" (3.5 mm)	47.35" x 95.60" (1203 x 2428 mm)
CHEVRON	STANDARD	BIANCA-WHITE and CARBONE-CHARCOAL	0.138" (3.5 mm)	48" x 96" (1219 x 2438 mm)
CREEPER	STANDARD	BIANCA-WHITE and CARBONE-CHARCOAL	0.138" (3.5 mm)	48" x 96" (1219 x 2438 mm)
CUTTER	STANDARD	BIANCA-WHITE and CARBONE-CHARCOAL	0.138" (3.5 mm)	48" x 96" (1219 x 2438 mm)
EGYPTIAN	STANDARD	BIANCA-WHITE and CARBONE-CHARCOAL	0.138" (3.5 mm)	48" x 96" (1219 x 2438 mm)
FABRIC	STANDARD	BIANCA-WHITE and CARBONE-CHARCOAL	0.138" (3.5 mm)	48" x 96" (1219 x 2438 mm)
FEATHER	STANDARD	BIANCA-WHITE and CARBONE-CHARCOAL	0.138" (3.5 mm)	48" x 96" (1219 x 2438 mm)
FLUTED-DELTA	STANDARD	BIANCA-WHITE and CARBONE-CHARCOAL	0.138" (3.5 mm)	48" x 96" (1219 x 2438 mm)
FROND	STANDARD	BIANCA-WHITE and CARBONE-CHARCOAL	0.138" (3.5 mm)	48" x 96" (1219 x 2438 mm)
HONEYCOMB	STANDARD	BIANCA-WHITE and CARBONE-CHARCOAL	0.200" (5.0 mm)	48" x 96" (1219 x 2438 mm)
LOUVRE	STANDARD	BIANCA-WHITE and CARBONE-CHARCOAL	0.160" (4.0 mm)	48" x 96" (1219 x 2438 mm)
PETAL	STANDARD	BIANCA-WHITE and CARBONE-CHARCOAL	0.138" (3.5 mm)	48" x 96" (1219 x 2438 mm)
PRISMATIC	STANDARD	BIANCA-WHITE and CARBONE-CHARCOAL	0.256" (6.5 mm)	48" x 96" (1219 x 2438 mm)
SOLARIS	STANDARD DOOR PATTERN	BIANCA-WHITE and CARBONE-CHARCOAL	0.315" (8.0 mm)	48" x 120" (1219 x 3048 mm)
SOLARIS	FEATURE OR ACCENT WALL	BIANCA-WHITE and CARBONE-CHARCOAL	0.315" (8.0 mm)	96" x 216" (8 Feet x 18 Feet) (2438 x 5486 mm)
TREAD	STANDARD	BIANCA-WHITE and CARBONE-CHARCOAL	0.138" (3.5 mm)	48" x 96" (1219 x 2438 mm)
WAVES (CROSS)	STANDARD	BIANCA-WHITE and CARBONE-CHARCOAL	0.216" (5.5 mm)	48" x 96" (1219 x 2438 mm)
WAVES (Horizontal-1)	STANDARD	BIANCA-WHITE and CARBONE-CHARCOAL	0.256" (6.5 mm)	48" x 96" (1219 x 2438 mm)
WAVES (Horizontal-2)	STANDARD	BIANCA-WHITE and CARBONE-CHARCOAL	0.236" (6.0 mm)	48" x 96" (1219 x 2438 mm)
WAVES (VERTICAL)	STANDARD	BIANCA-WHITE and CARBONE-CHARCOAL	0.256" (6.5 mm)	48" x 96" (1219 x 2438 mm)
CUSTOM DESIGNS	STANDARD	BIANCA-WHITE and CARBONE-CHARCOAL	0.138"-0.256" (3.5 - 6.5 mm)	48" x 120" (1219 x 3048 mm)

ENVIRONMENTAL CONSIDERATIONS:

For detailed environmental impact information, please refer to the Product Environmental Data Sheet - Crystal Quartz Bonded Surfaces.

HOW TO SPECIFY:

To order a product, please indicate the pattern, type, colour and quantity