

Metallic Bonded Surface is a flexible, lightweight, extremely durable and low-maintenance surfacing sheet. It is available in different patterns and metallic colours like Bronze, Aluminium, Copper, Gold-Bronze, and Nickel-Silver in Dark patina and Natural patina finish.



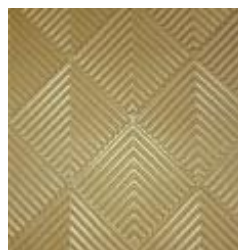
Aluminium Dark



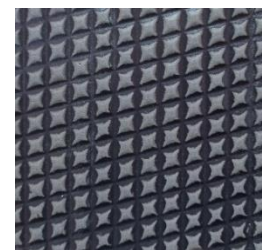
Bronze Dark



Copper Natural



Gold-Bronze Natural



Nickel-Silver Dark

Recycled Content

Configurations : Standard Options (All Various Patterns , Colours & Finishes)	Post- Industrial Recycled Content	Post- Consumer Recycled Content	Total RecycledContent
Metallic Bonded Aluminium -- (Antique Dark Patina & Natural Patina finish)	35%	1%	36%
Metallic Bonded Bronze -- (Antique Dark Patina & Natural Patina finish)	50%	1%	51%
Metallic Bonded Copper -- (Antique Dark Patina & Natural Patina finish)	50%	1%	51%
Metallic Bonded Gold-Bronze -- (Only Natural Patina finish)	39%	1%	40%
Metallic Bonded Nickel-Silver -- (Antique Dark Patina & Natural Patina finish)	41%	1%	42%

Green Building Standards

LEED®

This product contributes towards satisfying one or more LEED® credits as briefed below.

- MR: Recycled Content – This product has recycled material content. Recycled content details are shown above for all standard options. Bespoke product recycled content is available on request.
- MR: Construction Waste Management – Packaging is designed to be reusable or recyclable. Please see below for details.
- MR: Regional Materials – This product is manufactured in Pune, India factory. Please contact for additional information.

LEED® India

This product contributes towards satisfying one or more LEED® India credits as briefed below.

- MR: Recycled Content – This product has recycled material content. Recycled content details are shown above for all standard options. Bespoke product recycled content is available on request.
- MR: Construction Waste Management – Packaging is designed to be reusable or recyclable. Please see below for details.
- MR: Sourcing of Raw Materials (Regional materials) – This product is manufactured in Pune, India factory. Please contact for additional information.
- MR: Regional Materials – This product is manufactured in Pune, India factory. Please contact for additional information.

Green Globes™

This product contributes towards satisfying one or more Green Globes™ credits as briefed below.

- 3.5.4.1 Construction Waste – Packaging is designed to be reusable or recyclable. Please see below for details.
- 10.2.2.1 Recycled Content -- This product has recycled material content. Recycled content details are shown above for all standard options. Bespoke product recycled content is available on request.
- 10.2.4.1 Transportation of Processed or Manufactured Materials – This product is manufactured in Pune, India factory. Please contact for additional information.

Estidama

This product contributes towards satisfying one or more Estidama credits as briefed below.

- SM-R2/SM-13: Construction Waste Management– Packaging is designed to be reusable or recyclable. Please see below for details.
- ADMAT1: Materials Specification – Major Building Elements – Recycled-- This product has recycled material content. Recycled content details are shown above for all standard options. Bespoke product recycled content is available on request.
- ADMAT5: Sustainability Materials Sourcing– This product is manufactured with environment friendly processes. Please see below for details or contact for additional information.
- ADWAS1: Reduction of Waste— Most of the products are recyclable. Pls see below for details.

Product Materials

Material	Description	Maintenance Rating (0-5)*	Inherent Value Rating (0-5)**	Biodegradable	Corrosion / Wear Resistant	Rapidly Renewable	Recyclable	Scratch Resistant
Metal Powders	The recycled fine particles of metal alloys used for specific metallurgical requirements.	4	5				✓	✓
Fiber-Reinforced Polymer	The composite materials made of a polymer matrix reinforced with fibers.	4	0		✓			✓

*Maintenance ratings to keep up product performance characteristics and aesthetics/visual appearance are assigned as follows:
0 – High level of maintenance required; 5 – Absolutely no maintenance required.

**Inherent value ratings are assigned based on the material's scrap value: 0 – No scrap value; 5 – High scrap value,

Processes

Manufacturing Processes	Description
Metallic Bonded Casting	It is a process of blending a fiber-reinforced polymer and metal powder matrix and then cast in a mold.
Patina Application (Only to the antique dark finish casting)	It is a process of applying a non-toxic contrast-enhancing surface treatment only to the metallic bonded casting having an antique dark patina finish. It is not applied to the metallic bonded casting having natural patina finish.

Packaging Materials

Material	Type	Description	Disposal
Cardboard/Corrugated	Sheets	It is used to provide an impact cushioning between a product and its package or between two products.	Reuse/Recycle
Foam	Pads/Sheets	The foam pads/sheets are used to cushion products against their packages and also between two products.	Reuse
Wood	Box/Crate	Boxes are made to fit onsite. Wood scraps are recycled into mulch. Crates are reused when possible.	Reuse/Recycle
Wood	Pallet	The pallets are used in shipping. They are reused onsite until no longer serviceable, and then recycled.	Reuse/Recycle

Transport

Method	Type	Description
Sea	Overseas	Some product components are shipped by cargo ship from overseas and almost all overseas shipments to customers are sent via sea transport.
Road	Truck	All incoming shipments and outgoing shipments to customers are sent via road transportation.

Maintenance & Use

Maintenance or Use	Description	Chemicals Required
Clean with Water and Mild water based Cleaner	This product requires a damp cloth and a mild, nontoxic cleaner for maintenance.	Mild, water-based cleaner

Disposal

Method	Description
Not Recyclable	The final product is not recyclable or cannot be easily disassembled for recycling.

S3 Surfaces India Pvt Ltd take our responsibility seriously, in observing best environment practices, the utilization & exploration of sustainable products, services and materials to add-value. We maintain an Environmental Management System and are continually working to improve our impact through efficiency, material selection, vendor education, employee involvement, and a commitment to being exemplary corporate citizens. If you would like additional information, please contact our Sustainability Team at green.s3surfacesindiapl@gmail.com.