

## METALLIC BONDED SURFACES

### PRODUCT DATA



\*Please note that -

- 1) The images shown in this document are to understand the pattern orientation, & are of the sample swatches of size 4 inches x 4 inches.
- 2) Actual finishes or colours may vary slightly from those shown in this document or site because different computer monitors will render colours differently. Hence please refer physical samples for actual pattern/texture design, colour & finish.
- 3) The surfaces are handcrafted by our artists. As a result, every surface may have minor changes. Please do not consider them as flaws rather as artistic variations.
- 4) The physical samples are mounted to aluminium backing for presentation purpose. This aluminium backing material does not appear on the final product.

### ENVIRONMENTAL CONSIDERATIONS:

For detailed environmental impact information, please refer to the Product Environmental Data Sheet - Metallic Bonded Surfaces.

### HOW TO SPECIFY BONDED SURFACES:

To order product, please indicate pattern, type, colour, finish and quantity.

## METALLIC BONDED SURFACES

### PRODUCT DATA

**Metallic Bonded** is a high performance surfacing sheet cast by blending metal powder and a FRP matrix to create a material that is flexible, light weight, extremely durable, and low maintenance surfacing sheet with a character, colour and appearance like a solid metal. The standard colours for Metallic Bonded are Metallic Bronze, Metallic Aluminium, Metallic Nickel-Silver and Metallic Gold-Bronze.

### METALLIC BONDED FEATURES:

- Suitable for interior and select exterior applications for rich and solid metal look.
- It is water proof, UV grade, fire retardant and have exceptional resistance to abrasion, wear and tear, and scratching.
- It is manufactured according to the below specifications and provided cut to size & ready to install.

### MATERIAL DESCRIPTION / SPECIFICATION:

METAL COLOUR OPTIONS	PATTERN	PATINA FINISH
<ul style="list-style-type: none"> <li>• Available in 4 standard metal colours – Bronze, Aluminium, Nickel-Silver and Gold-Bronze.</li> <li>• For larger quantities, metallic copper colour is made available.</li> </ul>	<ul style="list-style-type: none"> <li>• Pattern means 3D Impression design. Please refer images of patterns and the chart for thickness &amp; size on subsequent pages.</li> <li>• For larger quantity projects, enquiries for custom design patterns are welcome.</li> </ul>	<ul style="list-style-type: none"> <li>• For all standard colours, a contrast-enhancing surface treatment is applied to get antique dark patina finish, and if not applied then it is natural patina finish.</li> <li>• The Metallic Gold-Bronze will be available only in natural patina finish.</li> </ul>

### METAL COLOR AND PATINA FINISH OPTIONS:



Aluminium-Dark



Bronze-Dark



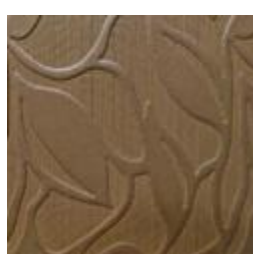
Nickel-Silver-Dark



Copper-Natural



Aluminium-Natural



Bronze-Natural



Nickel-Silver-Natural



Gold-Bronze-Natural

### MATERIAL & CONSTRUCTION DETAILS:

STANDARD, SLIMLINE & BACKED CASTINGS	INSTALLATION	LIMITATIONS
<ul style="list-style-type: none"> <li>• Castings can be laminated to any base substrates called backers like wooden (MDF, plywood or particleboard), WPC, ACP or metalsurfaces like aluminium sealer sheet at our end or at site by your skilled carpenter.</li> <li>• Application directly to drywall is not recommended.</li> <li>• Some patterns are available on a reduced sheet thickness (1.5 to 2 mm) to use where clearance is less; called Slimline castings.</li> <li>• Castings can be factory-laminated to a backer, suitable for application to interior and exterior walls.</li> </ul>	<ul style="list-style-type: none"> <li>• Castings are typically installed using construction or contact adhesive or glue.</li> <li>• Backed castings provide a greater range of installation options using either adhesives or fasteners. General installation instructions are available.</li> </ul>	<ul style="list-style-type: none"> <li>• Metallic Bonded is intended to be an attractive and durable cladding material and should not be used as a structural element nor should it be used to provide reinforcing or bracing for structural members. S3 Surfaces recommends either a minimum 1/8" (3mm) reveal or a trim between sheets. Exposed edges of casting should be protected by trim or other material.</li> </ul>



## METALLIC BONDED SURFACES

### PRODUCT DATA

#### METALLIC BONDED CHARACTERISTICS:

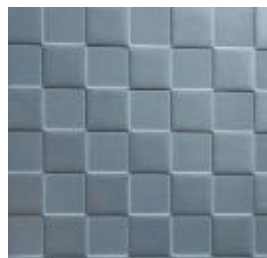
MAINTENANCE	CURVED PROFILE
<ul style="list-style-type: none"> <li>Fingerprints, smudges, dust and dirt can be removed by using damp cloth with an ammonia-free and mild water-based cleaner.</li> <li>Use of abrasives, chlorine and solvent based cleaners, acids; steel-wool and wire brushes are to be strictly avoided.</li> </ul>	<ul style="list-style-type: none"> <li>The standard and slimline castings can generally be applied to the curved surface with radii below to about 400 mm (16"). The slim castings are to be specially made available in 2 to 2.5 mm thickness.</li> <li>Curve has to be in same orientation as pattern, &amp; it can be in 2, 3 or 4 halves.</li> <li>The minimum achievable radius varies depending on the thickness, pattern, and degree of relief.</li> </ul>

#### PRODUCTS & APPLICATIONS:

Metallic Bonded are specified for walls, column covers, doors, elevator interiors, accents, custom fabrication or any application where modern, visual richness is desired. The table below shows standard S3 Surfaces products in which Metallic Bonded Surfaces are specified.

S3 INTERIOR WALL PANELS AND CLADDING SYSTEM; AND ELEVATOR INTERIORS PANELS	S3 COLUMN CLADDING OR COVER SYSTEM	S3 ARCHITECTURAL DOORS AND ELEVATOR DOOR SKINS	S3 INTERIOR AND EXTERIOR CLADDING AND FAÇADE SYSTEM
<ul style="list-style-type: none"> <li>All metallic bonded patterns are available as standard inset panel options with lamination to any base substrate.</li> <li>The surfaces can be used with Capture panel types.</li> </ul>	<ul style="list-style-type: none"> <li>All metallic bonded patterns are available as standard inset panel options.</li> <li>The surfaces can be used with Capture panel types.</li> </ul>	<ul style="list-style-type: none"> <li>Architectural Doors are made by laminating metallic bonded castings to both sides of wood cores.</li> <li>Slimline castings of some patterns may be specified for elevator doors where clearance is very less.</li> </ul>	<ul style="list-style-type: none"> <li>All patterns are available as standard panels with aluminium backing for all external walls.</li> </ul>

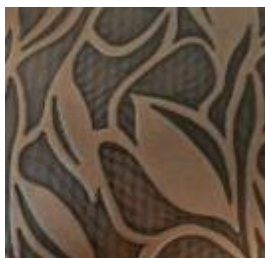
#### PATTERNS:



**CHESS ALUMINIUM**



**CHESS BRONZE**



**CREEPER BRONZE**



**CREEPER ALUMINIUM**



**EGYPTIAN ALUMINIUM**



**EGYPTIAN BRONZE**



**WHIRL ALUMINIUM**



**FABRIC BRONZE**



**FABRIC ALUMINIUM**



**CUTTER NICKEL-SILVER**



**CUTTER ALUMINIUM**





**FEATHER BRONZE**



**FEATHER ALUMINIUM**



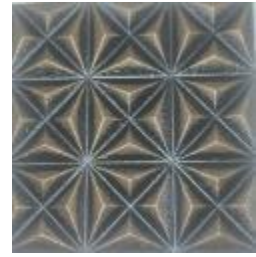
**TREAD BRONZE**



**TREAD ALUMINIUM**



**PRISMATIC BRONZE**



**COPPER-BRONZE**



**TREAD BRONZE**



**CHEVRON GOLD-BZ**



**FROND BRONZE**



**FROND ALUMINIUM**



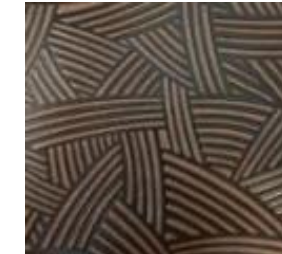
**WEB ALUMINIUM**



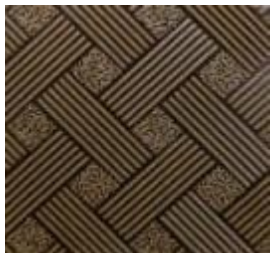
**PETAL BRONZE**



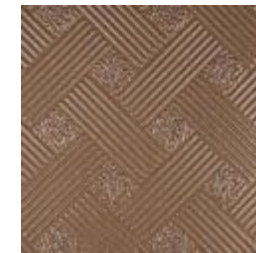
**PETAL ALUMINIUM**



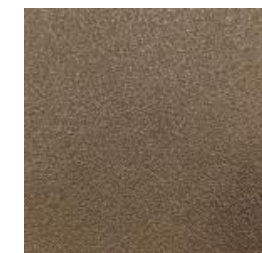
**WEB BRONZE**



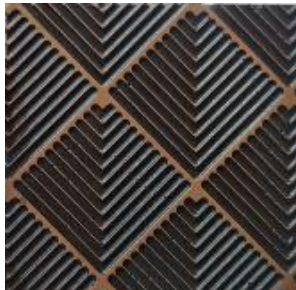
**WOVEN BRONZE**



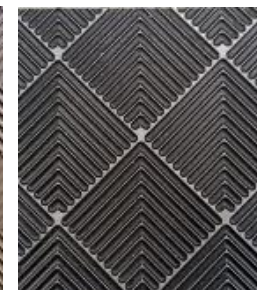
**WOVEN ALUMINIUM**



**BEAD-BLAST BRONZE & ALUMINIUM**



**CHEVRON BRONZE & ALUMINIUM**



**FLUTED BRONZE & ALUMINIUM**



## METALLIC BONDED SURFACES

### PRODUCT DATA

#### MATERIAL SPECIFICATIONS:

The chart below shows thickness and sheet sizes for all castings of Metallic Bonded Surfaces. These Surfaces are available in Slimline type also alongwith Standard type. **The thickness of Slimline Surfaces is from 2 to 2.5 mm, & of Standard Surfaces is from 3 to 7 mm.**

**Dimensional tolerances are – a) For Thickness of sheets up to 4.5 mm, +/- 0.5 mm & above 4.5 mm, +/- 1 mm. b) For sheet Width & Length, +/- 3 mm.** For backed castings, simply add your preferred backer or substrate thickness to the casting thickness shown.

**Castings may be specified in any sheet size up to the maximum indicated in the chart.**

PATTERN	CASTING TYPE	THICKNESS	STANDARD SHEET SIZE (W X L)	METALLIC BONDED BRONZE		METALLIC BONDED ALUMINIUM		METALLIC BONDED NICKEL-SILVER		METALLIC BONDED GOLD-BRONZE
				DARK Finish	NATURAL Finish	DARK Finish	NATURAL Finish	DARK Finish	NATURAL Finish	NATURAL Finish
BEAD-BLAST	SLIMLINE / STANDARD	0.100" / 0.138" (2.5 / 3.5 mm)	48" x 120" (1219 x 3048 mm)	Yes	Yes	Yes	Yes	Yes	Yes	Yes
CHESS	SLIMLINE / STANDARD	0.100" / 0.138" (2.5 / 3.5 mm)	47.35" x 95.60" (1203 x 2428 mm)	No	Yes	No	Yes	No	Yes	Yes
CHEVRON	SLIMLINE / STANDARD	0.100" / 0.138" (2.5 / 3.5 mm)	48" x 96" (1219 x 2438 mm)	Yes	Yes	Yes	Yes	Yes	Yes	Yes
CREEPER	SLIMLINE / STANDARD	0.100" / 0.138" (2.5 / 3.5 mm)	48" x 96" (1219 x 2438 mm)	Yes	Yes	Yes	Yes	Yes	Yes	Yes
CUTTER	SLIMLINE / STANDARD	0.100" / 0.138" (2.5 / 3.5 mm)	48" x 96" (1219 x 2438 mm)	No	Yes	No	Yes	No	Yes	Yes
EGYPTIAN	SLIMLINE / STANDARD	0.100" / 0.138" (2.5 / 3.5 mm)	48" x 96" (1219 x 2438 mm)	Yes	Yes	Yes	Yes	Yes	Yes	Yes
FABRIC	SLIMLINE / STANDARD	0.100" / 0.138" (2.5 / 3.5 mm)	48" x 96" (1219 x 2438 mm)	Yes	Yes	Yes	Yes	Yes	Yes	Yes
FEATHER	STANDARD	0.138" (3.5 mm)	48" x 96" (1219 x 2438 mm)	Yes	Yes	Yes	Yes	Yes	Yes	Yes
FLUTED	STANDARD	0.138" (3.5 mm)	48" x 96" (1219 x 2438 mm)	Yes	Yes	Yes	Yes	Yes	Yes	Yes
FROND	SLIMLINE / STANDARD	0.100" / 0.138" (2.5 / 3.5 mm)	48" x 96" (1219 x 2438 mm)	Yes	Yes	Yes	Yes	Yes	Yes	Yes
PETAL	SLIMLINE / STANDARD	0.100" / 0.138" (2.5 / 3.5 mm)	48" x 96" (1219 x 2438 mm)	Yes	Yes	Yes	Yes	Yes	Yes	Yes
PRISMATIC	STANDARD	0.236" (6.0 mm)	48" x 96" (1219 x 2438 mm)	Yes	Yes	Yes	Yes	Yes	Yes	Yes
SOLARIS	STANDARD DOOR PATTERN	0.315" (8.0 mm)	48" x 120" (1219 x 3048 mm)	Yes	Yes	Yes	Yes	Yes	Yes	Yes
SOLARIS	FEATURE OR ACCENT WALL	0.315" (8.0 mm)	96" x 216" (2438 x 5486 mm) (8 Feet x 18 Feet)	Yes	Yes	Yes	Yes	Yes	Yes	Yes
TREAD	SLIMLINE / STANDARD	0.100" / 0.138" (2.5 / 3.5 mm)	48" x 96" (1219 x 2438 mm)	Yes	Yes	Yes	Yes	Yes	Yes	Yes
WEB	SLIMLINE / STANDARD	0.100" / 0.138" (2.5 / 3.5 mm)	48" x 96" (1219 x 2438 mm)	Yes	Yes	Yes	Yes	Yes	Yes	Yes
WHIRL	SLIMLINE / STANDARD	0.100" / 0.138" (2.5 / 3.5 mm)	48" x 96" (1219 x 2438 mm)	Yes	Yes	Yes	Yes	Yes	Yes	Yes
WOVEN	SLIMLINE / STANDARD	0.100" / 0.138" (2.5 / 3.5 mm)	48" x 96" (1219 x 2438 mm)	Yes	Yes	Yes	Yes	Yes	Yes	Yes
Custom Designs	SLIMLINE / STANDARD	0.100" to 0.236" (2.5 to 6.0 mm)	48" x 120" (1219 x 3048 mm)	Yes	Yes	Yes	Yes	Yes	Yes	Yes