



S3 SURFACES INDIA PRIVATE LIMITED

Redefine and elevate your space with Luxury & Eternity

*** Metallic Bonded S3 Surfaces™ Catalogue ***

Our Metallic Bonded S3 Surfaces™ are specified & used as skins or surfacing sheets in various luxury Interior systems like Architectural doors, Wall panels, Feature or Highlighter walls, Accent walls; Wainscoting, Counter facings, Elevator interior panels, Elevator door skins, Architraves & Door claddings; Column covers, Wardrobe & Cabinet Shutter panels, Counter & Desk fronts, Space dividers, Railing insets, Custom fabrications, and any other applications where visual richness & exceptional resistance to wear are required.

SERVICES PROVIDED BY S3 SURFACES INDIA:

- Design, Manufacturing & supply of Architectural Decorative Bonded 3D Surfaces & Custom Design Systems
- Packaging, and Shipping
- Guidance for Installations

WHY S3 SURFACES™:

Product Features

Our Bonded Surfaces have gained popularity for their aesthetic value and functionality. Our Architectural 3D Bonded Surfaces offerings could significantly enhance your projects:

1. **Aesthetics:** They are hand-crafted, decorative, and unique cast composites, high-performance surfacing solutions offering endless design possibilities for today's interior spaces where visual richness is desired.
2. **Durability:** They are extremely durable; have exceptional abrasion, wear, and scratching resistance; and are 100% waterproof, termite-proof, borer-proof, fire-retardant, and long-lasting.
3. **Finished Product:** They are factory-finished, ready-to-clad, or installed directly at the site.
4. **Economy:** Our Surfaces have a very long shelf life, making them cheaper in the long run than comparable products.
5. **Versatility:** Our Surfacing sheets suit various architectural applications, from doors, walls, and columns to elevator interior panels.
6. **Customization:** Various patterns and finishes make a striking design statement. We also develop, manufacture & supply bespoke custom 3D surface designs, Murals, and Portraits by partnering directly with interior design professionals, tailoring each piece to their unique aesthetic and client specifications.
7. **Sustainability:** It is at the core of our process, with a focus on using eco-conscious materials and practices. The longer shelf life of our surfaces reduces the carbon footprint & generates no scrap. They contribute to satisfying Green Building Standards and Credits.



STANDARD PACKAGING METHOD:

- All the products are packed systematically in wooden crates and shipped to work site as per Client's instructions.
- The installation work scope is agreed as per discussions with client. If client or his project management team is going to do the necessary installation and site work then the products are supplied with Do's & Don'ts instruction sheet. The necessary guidance is also provided.
- In case product installation is included with supply terms then the necessary installation work is planned with our own skilled manpower or from our approved installation contractor's manpower under our own supervision, with due coordination and receipt of required site permissions from client.

STANDARD INSTALLATION PROCEDURE:

The Bonded Surfaces sheets are easy to cut with standard wood tools, and installed easily.

Steps to follow at site during installation of Bonded S3 Surfaces™ sheets:

- Build substrate base wall with either aluminium channels or plywood strips.
- Clean substrate surface to remove oil & dust particles.
- Apply structural or construction adhesive on substrate & Bonded Surface back.
- Install sheets or panels with the use of spacers to maintain proper dimensions.
- Use plywood strips for clamping, & Install trims or reveals.

Now installation is complete. Please view our installation video for more information.

SUSTAINABILITY:

We take our responsibility seriously, in observing best environment practices, the utilization & exploration of sustainable products, services & materials to add-value. We are also associated with our continued efforts to move towards an improved environmental footprint.

- Products are made with 40-50% recyclable & non-toxic materials
- Products are manufactured with environment friendly processes with less wastages
- Minimal maintenance effort
- Materials like wood planks, plywood, corrugated sheets & foam sheets used for packaging of Surfaces sheets for dispatch are reused & recycled
- Have very longer shelf life which reduces carbon foot print & generates no scrap. Therefore cheaper in the long run than comparable products
- S3 Bonded Surfaces contributes toward satisfying Green Building Standards and Credits

***For additional information, please contact our Sustainability Team at
green.s3surfacesindiapl@gmail.com

Types of Bonded S3 Surfaces™:

A) Metallic Bonded

B) Crystal Quartz Bonded

A) METALLIC BONDED S3 SURFACES™:

Metallic Bonded is a high performance surfacing sheet cast by blending metal granules with a FRP matrix to create a material that is flexible, light weight, extremely durable, and low maintenance surfacing sheet with a character and appearance like a solid metal. The Metallic Bonded Surfaces are made of Bronze, Aluminium, Nickel-Silver, Copper and Gold-Bronze.



***Please note that -

- 1) The images shown in this document are to understand the pattern orientation.
- 2) Actual finishes or colours may vary slightly from those shown in this document because different computer monitors & mobile screens will render colours differently. Hence please refer physical samples for actual pattern/texture design, colour & finish.
- 3) The surfaces are handcrafted by our artists. As a result, every surface may have minor changes. Please do not consider them as flaws rather as artistic variations.
- 4) The physical small size marketing samples are mounted to aluminium backing for presentation purpose only. This aluminium backing material does not appear on the final product.



MATERIAL SPECIFICATION:

- **Slimline Surfaces: Type SL**
Some pattern surfaces are available in a reduced sheet thickness between 2 to 2.5 mm. They are economical and are used where clearance is less.
- **Standard Surfaces: Type A to E**
These are available in thickness varying from 3 to 8 mm depending upon the depth of design.
- **Sheet Sizes:**
The Surfaces are available in any sheet size upto the maximum size - 4 feet in width x 8 feet or 10 feet in length as indicated in the specification charts.

MATERIAL TOLERANCES:

The chart below shows thickness and sheet sizes for all castings of Metallic Bonded S3 Surfaces™. These Surfaces are available in Slim-line type and Standard type.

The thickness of Slimline Surfaces is from 2 to 2.5 mm, & of Standard Surfaces is from 3 to 8 mm.

Dimensional tolerances are –

- a) For Thickness of sheets up to 4.5 mm, +/- 0.5 mm & above 4.5 mm, +/- 1 mm.
- b) For sheet Width & Length, +/- 3 mm.

For backed castings, simply add your preferred backer or substrate thickness to the casting thickness shown. Castings may be specified in any sheet size up to the maximum indicated in the chart.

ENVIRONMENTAL CONSIDERATIONS:

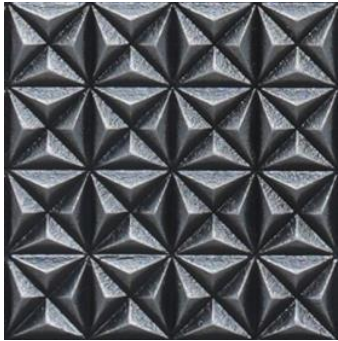
For detailed environmental impact information, please refer to the Product Environmental Data Sheet - Metallic Bonded S3 Surfaces™.

HOW TO SPECIFY AND ORDER:

To order product, please indicate pattern, type, colour, finish, size and quantity.

PATTERN & CODE	TYPE: (SL/A/B/C/D/E)	THICKNESS Inches & mm	SHEET SIZE (Width X Length)	METALLIC BONDED BRONZE		METALLIC BONDED ALUMINIUM		METALLIC BONDED NICKEL-SILVER		METALLIC BONDED GOLD-BRONZE
				DARK Finish	NATURAL Finish	DARK Finish	NATURAL Finish	DARK Finish	NATURAL Finish	NATURAL Finish
BEAD-BLAST 001	SLIMLINE (SL) / STANDARD (A)	0.090" / 0.120" (2.25 / 2.9 mm)	48" x 120" (1219 x 3048 mm)	Yes	Yes	Yes	Yes	Yes	Yes	Yes
CHESS 002	SLIMLINE (SL) / STANDARD (A)	0.090" / 0.120" (2.25 / 2.9 mm)	47.35" x 95.60" (1203 x 2428 mm)	No	Yes	No	Yes	No	Yes	Yes
CHEVRON 003	STANDARD (B)	0.134" (3.4 mm)	48" x 96"/120" (1219 x 2438/3048 mm)	Yes	Yes	Yes	Yes	Yes	Yes	Yes
CREEPER 004	STANDARD (A)	0.120" (2.9 mm)	48" x 96" (1219 x 2438 mm)	Yes	Yes	Yes	Yes	Yes	Yes	Yes
CUTTER 005	SLIMLINE (SL) / STANDARD (A)	0.090" / 0.120" (2.25 / 2.9 mm)	48" x 96" (1219 x 2438 mm)	No	Yes	No	Yes	No	Yes	Yes
ECLIPSIS 006	STANDARD – Left & Right hand sheets (D)	0.178" (6.5 mm)	48" x 96" (1219 x 2438 mm)	Yes	Yes	Yes	Yes	Yes	Yes	Yes
EGYPTIAN 007	SLIMLINE (SL) / STANDARD (A)	0.090" / 0.120" (2.25 / 2.9 mm)	48" x 96" (1219 x 2438 mm)	Yes	Yes	Yes	Yes	Yes	Yes	Yes
FABRIC 008	SLIMLINE (SL) / STANDARD (A)	0.090" / 0.120" (2.25 / 2.9 mm)	48" x 96" (1219 x 2438 mm)	Yes	Yes	Yes	Yes	Yes	Yes	Yes
FEATHER 009	STANDARD (A)	0.120" (2.9 mm)	48" x 96" (1219 x 2438 mm)	Yes	Yes	Yes	Yes	Yes	Yes	Yes
FLUTED 010	STANDARD (B)	0.138" (3.5 mm)	48" x 96"/120" (1219 x 2438/3048 mm)	Yes	Yes	Yes	Yes	Yes	Yes	Yes
FROND 011	SLIMLINE (SL) / STANDARD (A)	0.090" / 0.120" (2.25 / 2.9 mm)	48" x 96" (1219 x 2438 mm)	Yes	Yes	Yes	Yes	Yes	Yes	Yes
GROOVED 012	STANDARD (B)	0.138" (3.5 mm)	48" x 96" (1219 x 2438 mm)	Yes	Yes	Yes	Yes	Yes	Yes	Yes
HONEYCOMB 013	STANDARD (C)	0.210" (5.3 mm)	48" x 96" (1219 x 2438 mm)	No	Yes	No	Yes	No	Yes	Yes
LOUVERS 014	STANDARD (A/B)	0.116" / 0.155" (2.9 / 3.9 mm)	48" x 96" (1219 x 2438 mm)	Yes	Yes	Yes	Yes	Yes	Yes	Yes
PETAL 015	SLIMLINE (SL) / STANDARD (A)	0.090" / 0.120" (2.25 / 2.9 mm)	48" x 96" (1219 x 2438 mm)	Yes	Yes	Yes	Yes	Yes	Yes	Yes
PRISMATIC 016	STANDARD (D)	0.256" (6.5 mm)	48" x 96" (1219 x 2438 mm)	Yes	Yes	Yes	Yes	Yes	Yes	Yes
SOLARIS 017	STANDARD – Left & Right hand sheets (E)	0.315" (8.0 mm)	48" x 96"/120" (1219 x 2438/3048 mm)	Yes	Yes	Yes	Yes	Yes	Yes	Yes
SOLARIS, a Feature Wall Pattern 018	FEATURE WALL (Combination of left & right sides) (E)	0.315" (8.0 mm)	96" x 216" (2438x5486 mm) (8 Feet x 18 Feet)	Yes	Yes	Yes	Yes	Yes	Yes	Yes
THAR 019	STANDARD (B)	0.147" (3.7 mm)	48" x 96" (1219 x 2438 mm)	Yes	Yes	Yes	Yes	Yes	Yes	Yes
TREAD 020	SLIMLINE (SL) / STANDARD (A)	0.090" / 0.120" (2.25 / 2.9 mm)	48" x 96" (1219 x 2438 mm)	Yes	Yes	Yes	Yes	Yes	Yes	Yes
WEB 021	SLIMLINE (SL) / STANDARD (A)	0.090" / 0.120" (2.25 / 2.9 mm)	48" x 96" (1219 x 2438 mm)	Yes	Yes	Yes	Yes	Yes	Yes	Yes
WHIRL 022	SLIMLINE (SL) / STANDARD (A)	0.090" / 0.120" (2.25 / 2.9 mm)	48" x 96" (1219 x 2438 mm)	Yes	Yes	Yes	Yes	Yes	Yes	Yes
WOVEN 023	STANDARD (A)	0.090" / 0.120" (2.25 / 2.9 mm)	48" x 96" (1219 x 2438 mm)	Yes	Yes	Yes	Yes	Yes	Yes	Yes

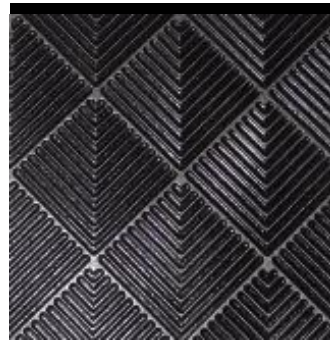
METAL COLOR AND PATINA FINISH OPTIONS



Aluminium-Dark



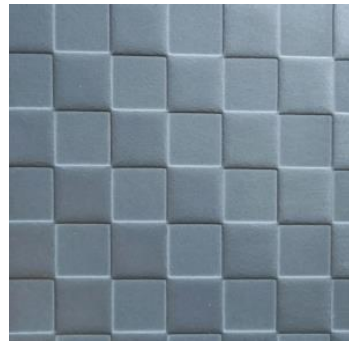
Bronze-Dark



Nickel-Silver (Ni-SI) -Dark



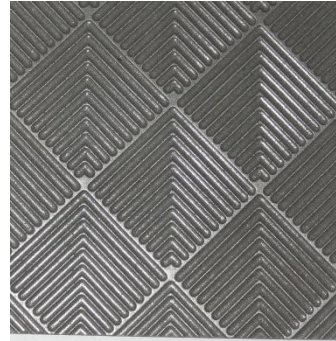
Copper-Natural



Aluminium-Natural



Bronze-Natural



Nickel-Silver-Natural



Gold-Bronze-Natural

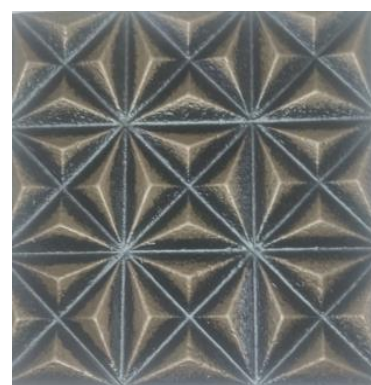
PATTERNS AND COLOR OPTIONS

The Images of small sample swatches are shown alongwith sheets of sizes 4 feet X 8 feet or 4 feet x 10 feet, to understand the pattern design, color & finish.

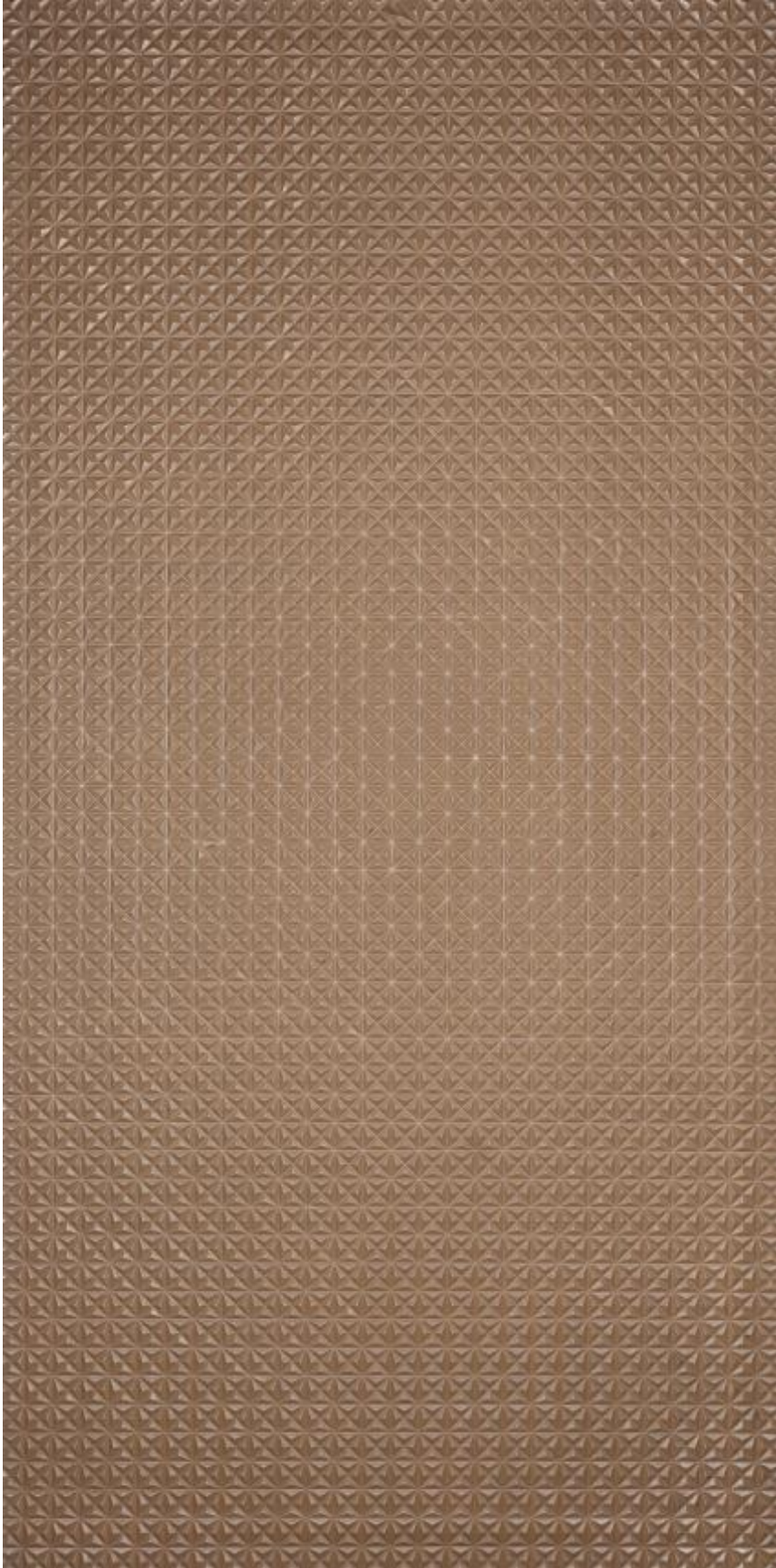
IMAGES OF SHEETS AND SAMPLE SWATCHES



PRISMATIC_COPPER_NATURAL



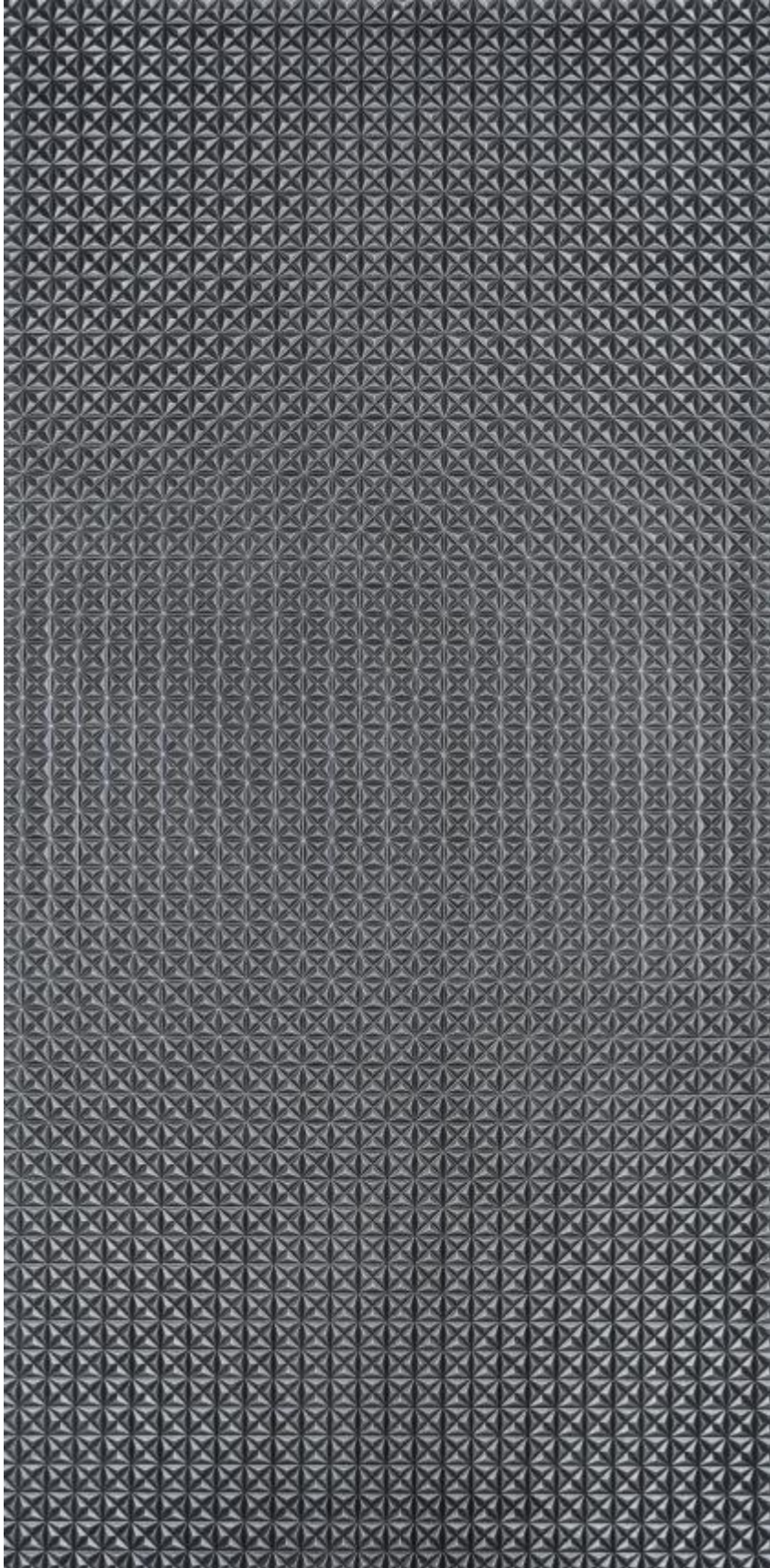
PRISMATIC_BRONZE_DARK



PRISMATIC_BRONZE_NATURAL_SHEET



BRONZE_NATURAL_SAMPLE-SWATCH



PRISMATIC_ALUMINIUM_DARK_SHEET



ALUMINUM_DARK_SAMPLE-SWATCH

DOOR SURFACING SHEET



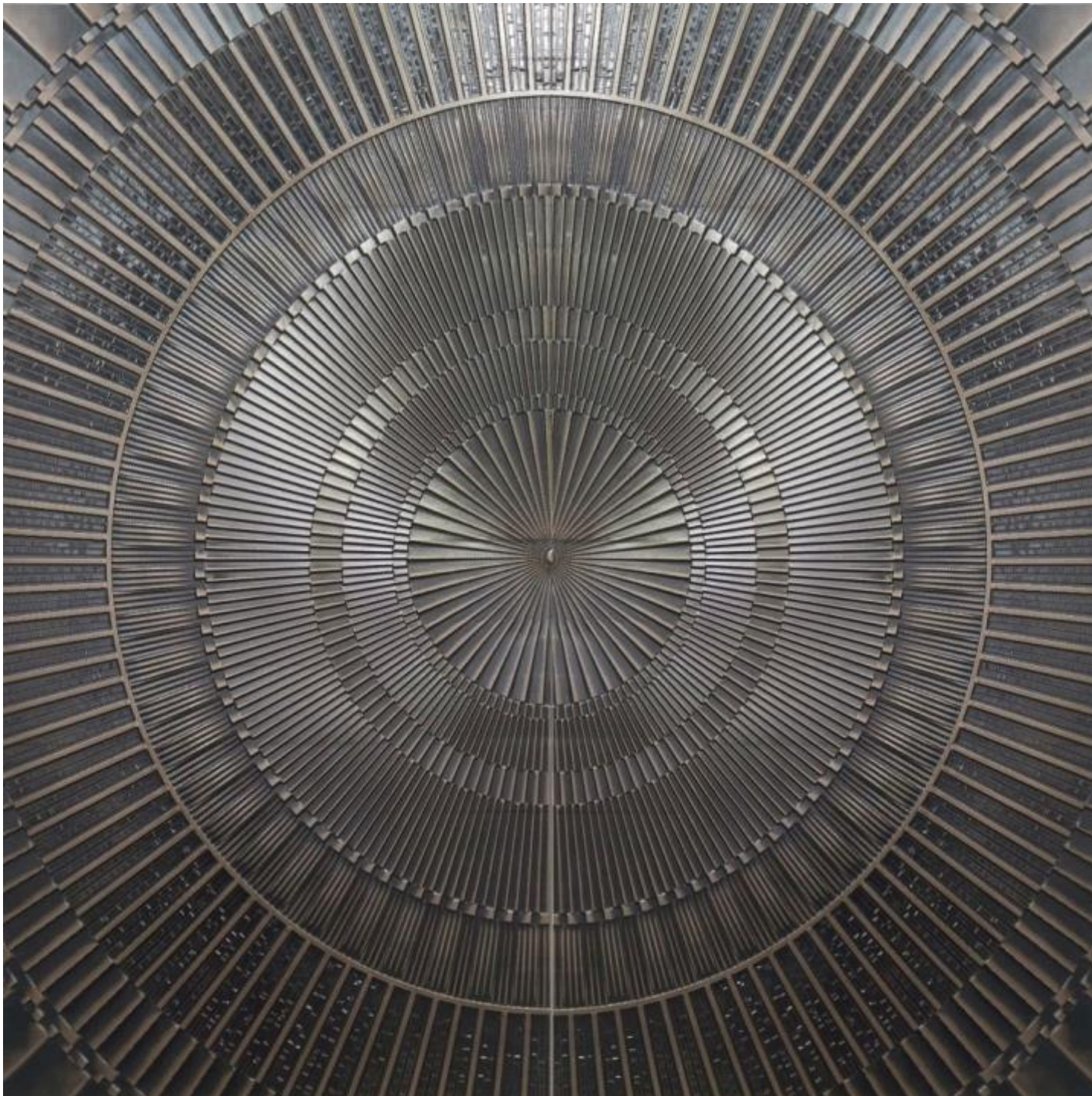
SOLARIS_BONDED-BRONZE_DARK_4 Feet x 10 Feet



SOLARIS_BONDED-BRONZE_DARK_4 Feet x 8 Feet



Architectural Door – Main Entrance Door of Bungalow in Metallic Bonded Bronze with Dark patina finish in Solaris Pattern



"ARCHITECTURAL DOUBLE LEAF DOOR" or "FEATURE WALL"

Metallic Bonded Bronze with Antique Dark finish in Solaris pattern

Sizes: 8'x8', 8'x10', 8'x18'

DOOR SURFACING SHEET



ECLIPSIS, A DOOR PATTERN_BRONZE_DARK_SHEET



BRONZE_DARK_SAMPLE-SWATCH

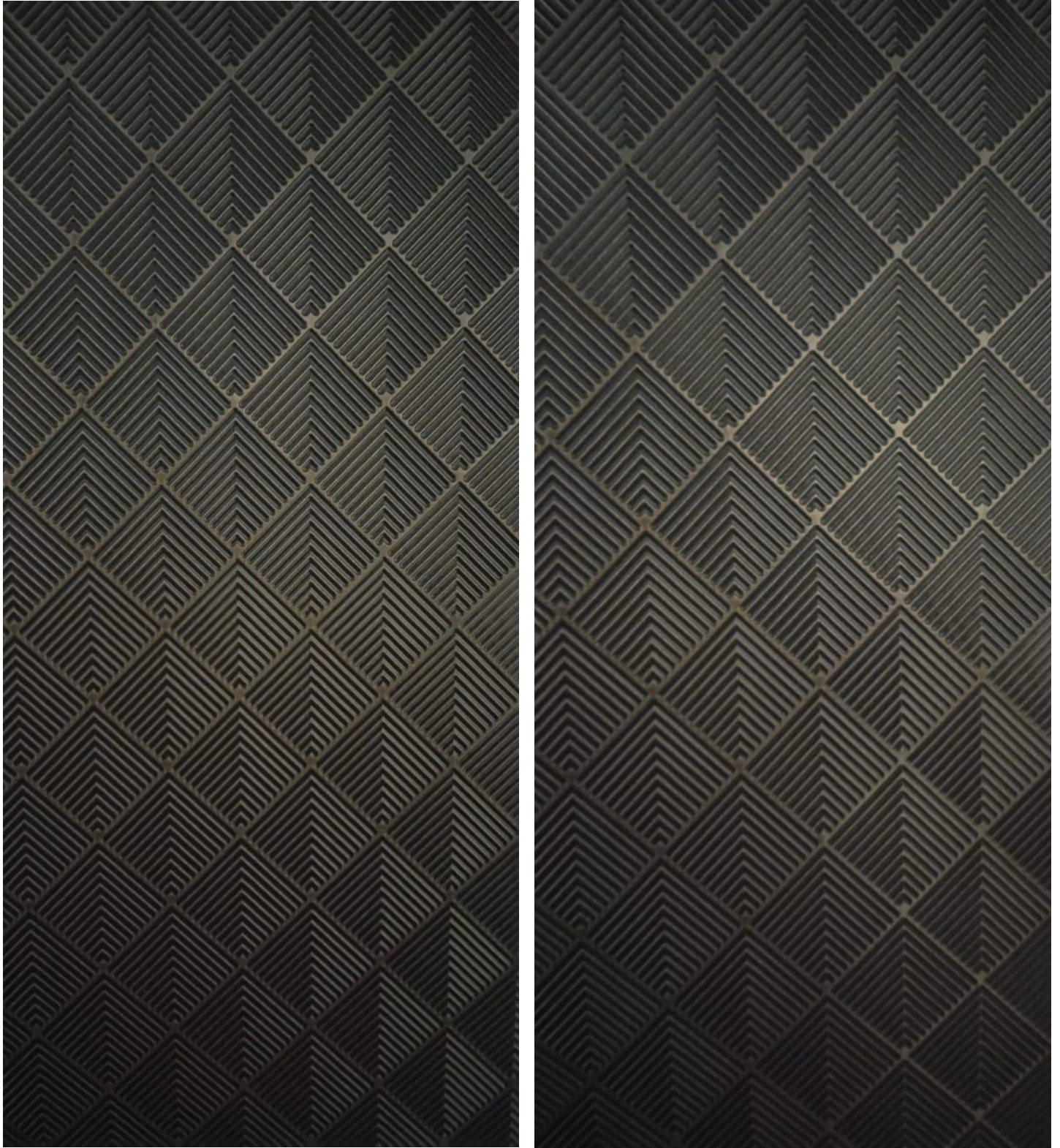
DOOR SURFACING SHEET



ECLIPSIS, A DOOR PATTERN_ALUMINUM_DARK_SHEET



ALUMINUM_DARK_SAMPLE-SWATCH



CHEVRON_BRONZE_DARK_SHEET_SAMPLE-SWATCHES



CREEPER_BRONZE_NATURAL_SHEET



BRONZE_NATURAL_SAMPLE-SWATCH



CREEPER_BRONZE_DARK



CREEPER_ALUMINIUM_DARK



CUTTER_ALUMINIUM_NATURAL



CUTTER_NICKEL-SILVER_NATURAL



FABRIC_ALUMINIUM_NATURAL



FABRIC_BRONZE_DARK



FABRIC_BRONZE_NATURAL_SHEET



BRONZE_NATURAL_SAMPLE-SWATCH



PETAL_BRONZE_NATURAL_SHEET



BRONZE_NATURAL_SAMPLE-SWATCH



PETAL_BRONZE_DARK



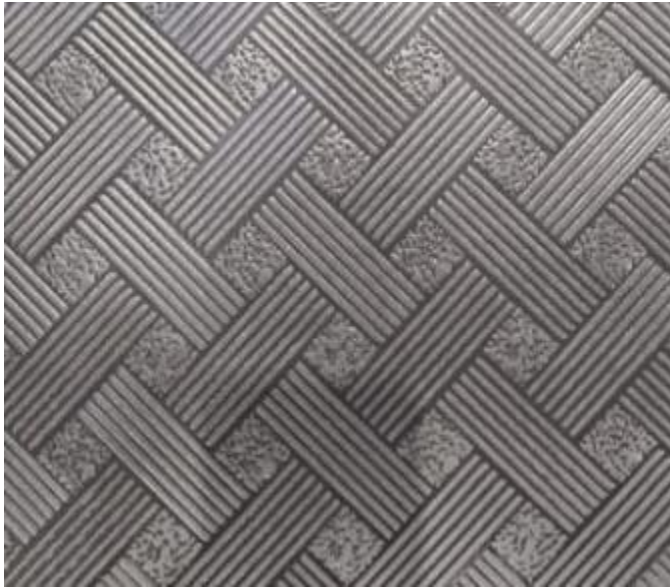
PETAL_ALUMINIUM_DARK



WOVEN_BRONZE_NATURAL



WOVEN_BRONZE_DARK



WOVEN_ALUMINIUM_DARK



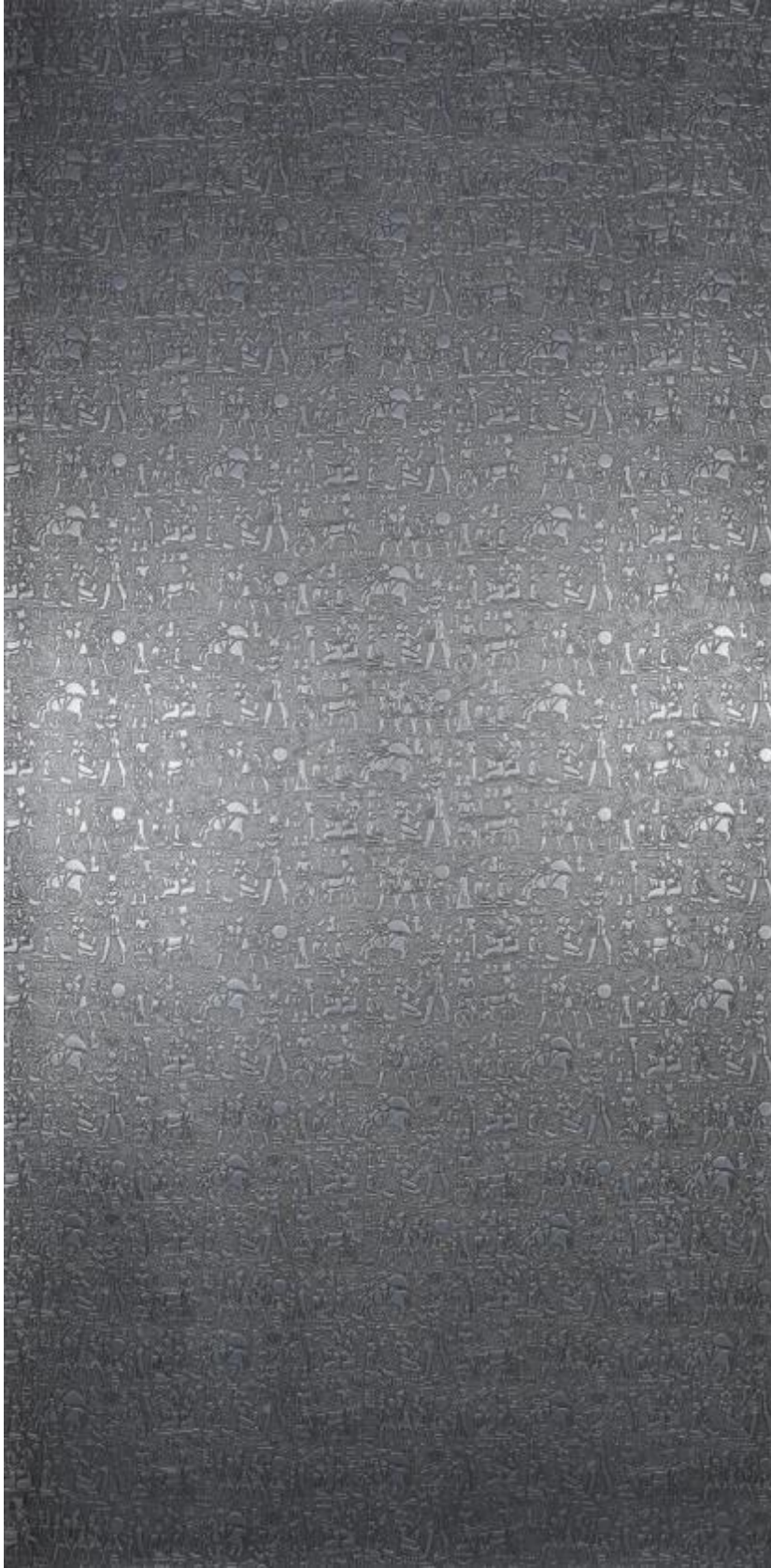
EGYPTIAN_ALUMINIUM_NATURAL



EGYPTIAN_BRONZE_DARK



EGYPTIAN_BRONZE_NATURAL



EGYPTIAN_ALUMINIUM_DARK_SHEET



ALUMINUM_DARK_SAMPLE-SWATCH

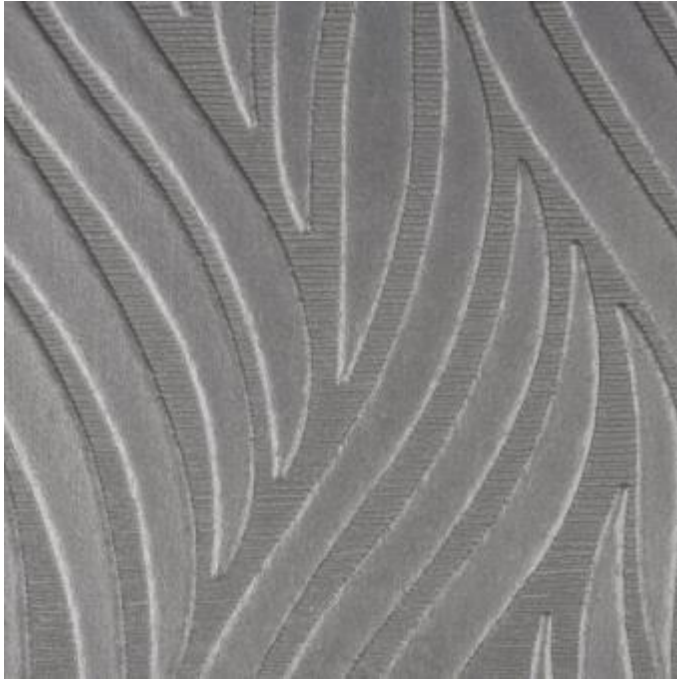


WEB_BRONZE_NATURAL_SAMPLE-SHEET



BRONZE_NATURAL_SAMPLE-SWATCH

**WEB_BRONZE_DARK****WEB_ALUMINIUM_DARK****TREAD_BRONZE_DARK****TREAD_ALUMINIUM_DARK**



FROND_ALUMINIUM_NATURAL



FEATHER_BRONZE_NATURAL



FROND_BRONZE_DARK



FROND_BRONZE_NATURAL



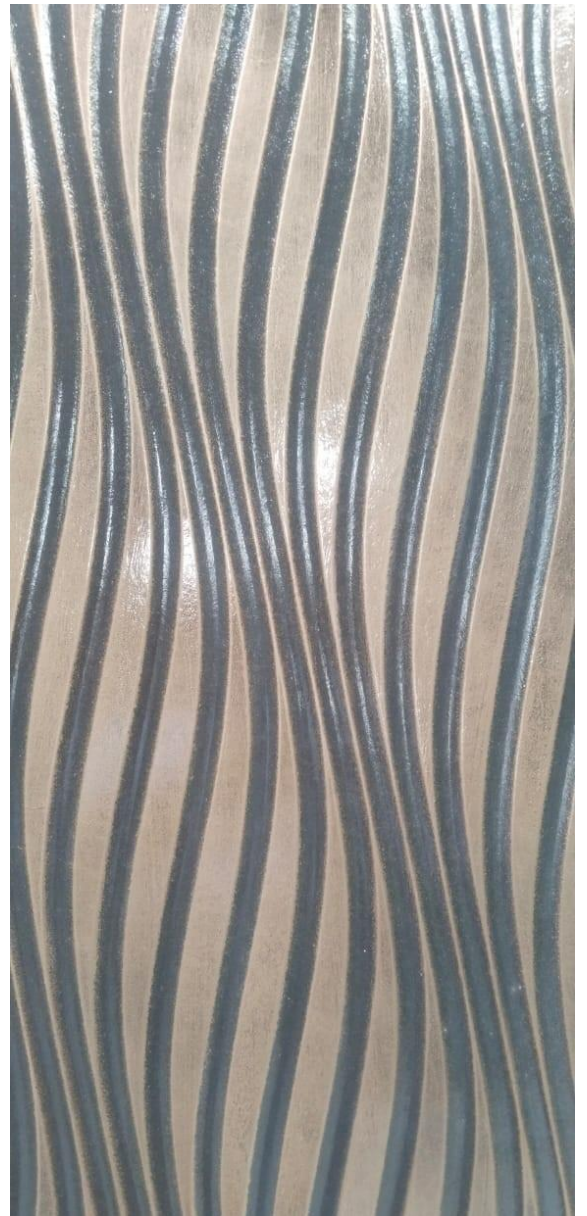
FROND_ALUMINIUM_DARK_SHEET



ALUMINUM_NATURAL_SAMPLE-SWATCH



THAR_BRONZE_DARK_SHEET



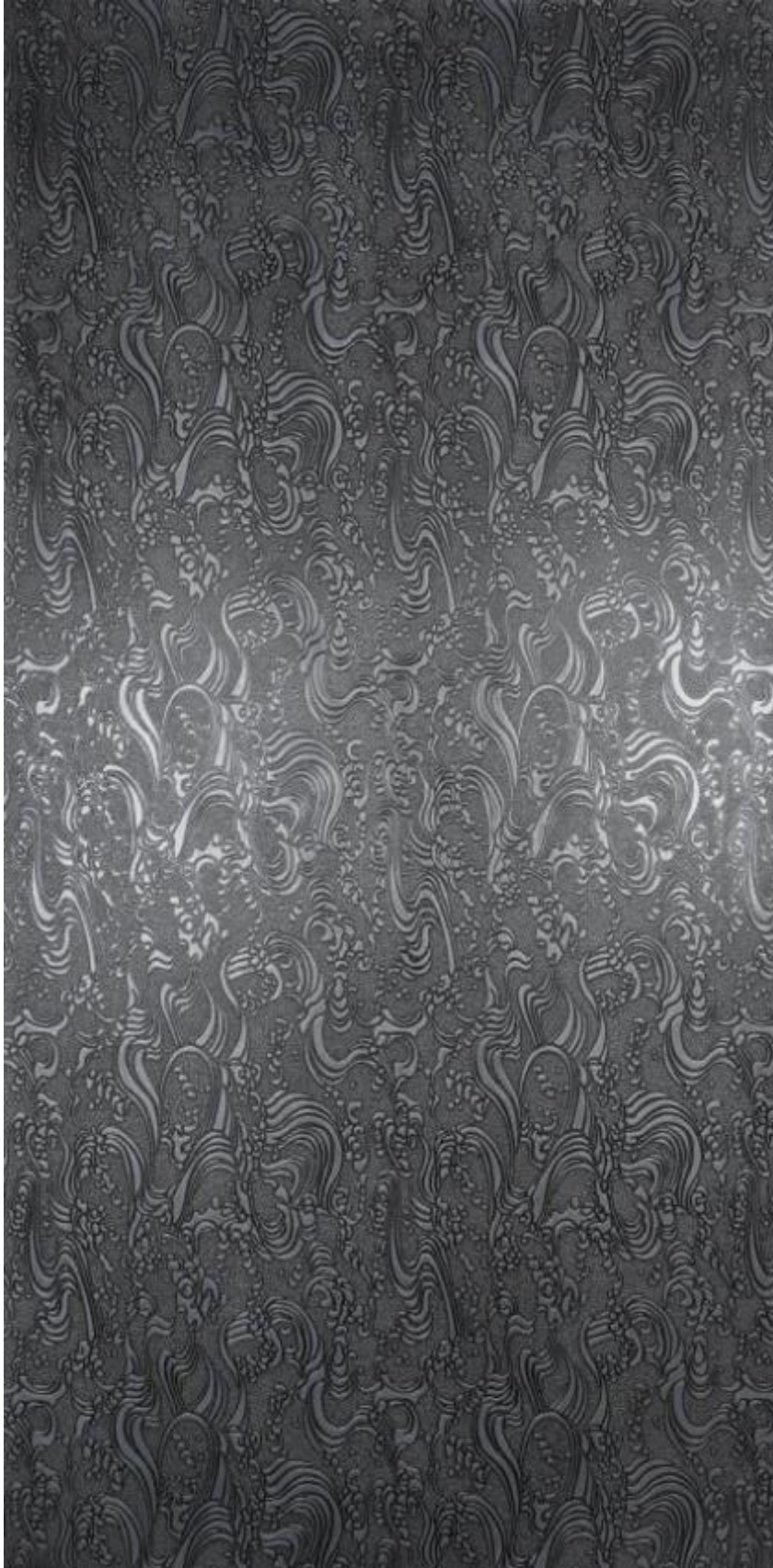
BRONZE_DARK_SAMPLE-SWATCH



FEATHER_BRONZE_DARK_SHEET



BRONZE_DARK_SAMPLE-SWATCH



FEATHER_ALUMINIUM_DARK_SHEET



ALUMINUM_DARK_SAMPLE-SWATCH



HONEYCOMB_BRONZE_DARK_SHEET



BRONZE_DARK & _NATURAL_SAMPLE-SWATCHES



CHESS_BRONZE_NATURAL_SHEET



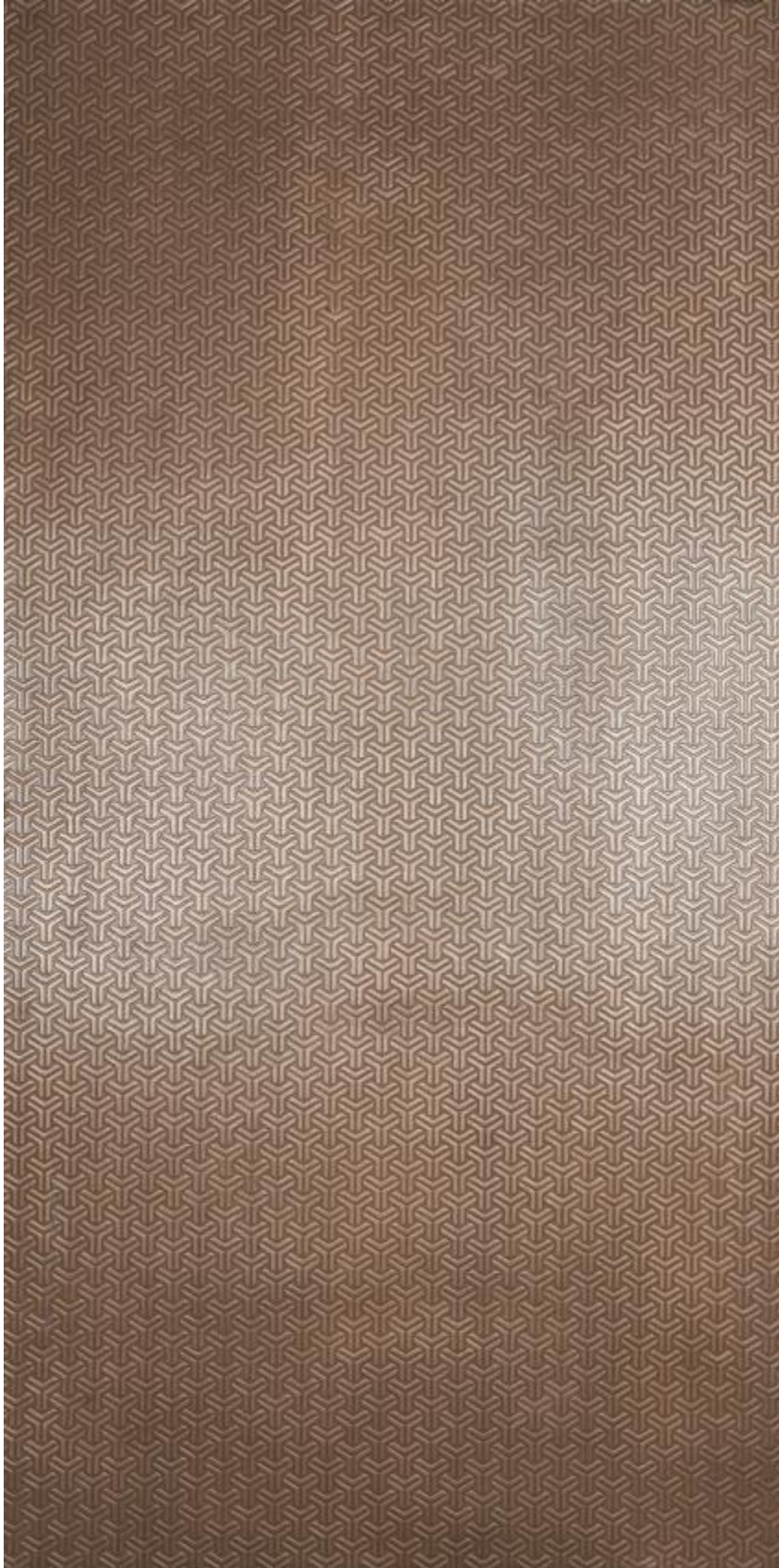
BRONZE_NATURAL_SAMPLE-SWATCH



CHESS_ALUMINIUM_NATURAL_SHEET



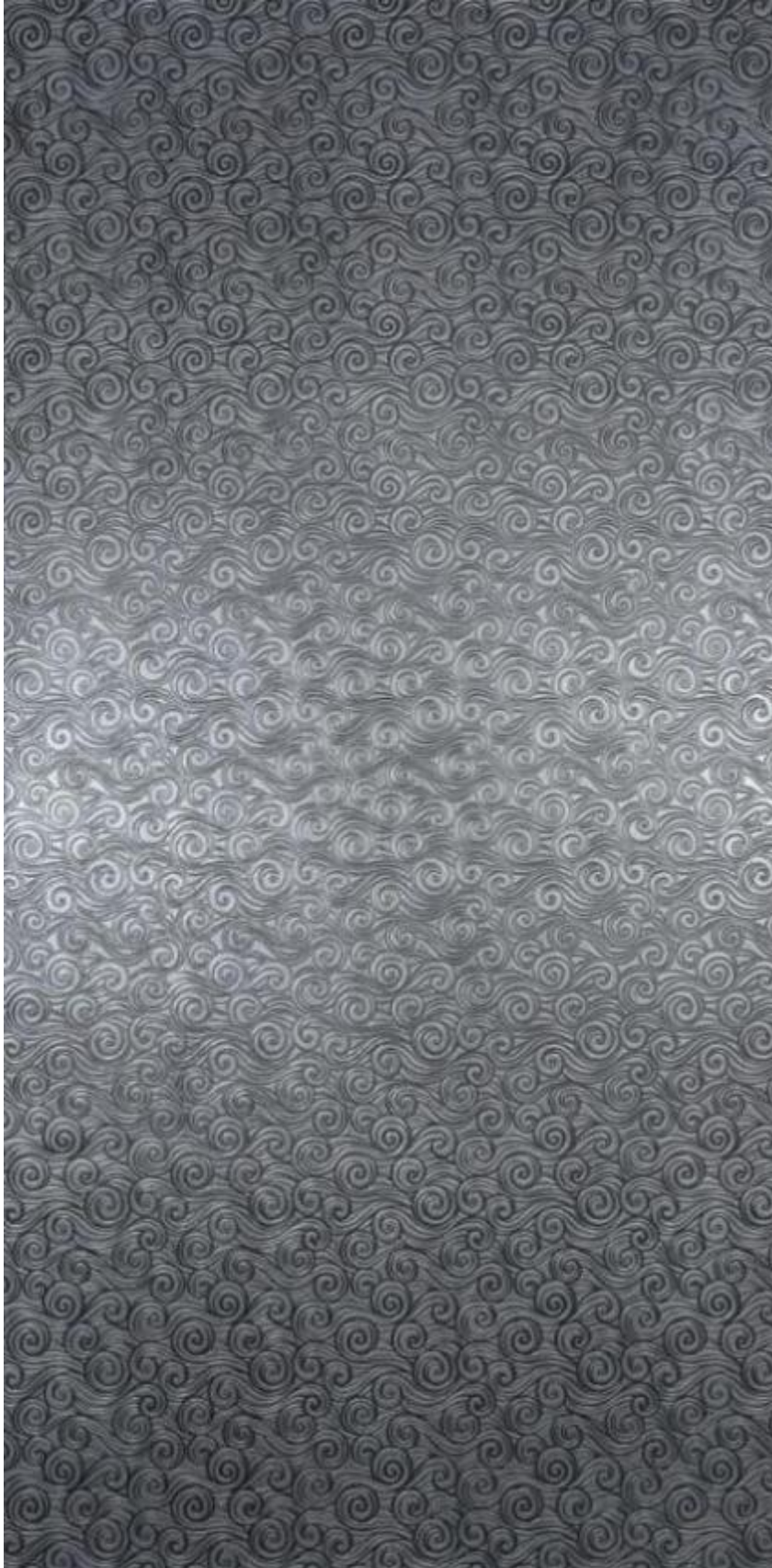
ALUMINIUM_NATURAL_SAMPLE-SWATCH



TREAD_BRONZE_NATURAL_SHEET



BRONZE_NATURAL_SAMPLE-SWATCH



WHIRL_ALUMINIUM_DARK_SHEET



ALUMINUM_DARK_SAMPLE-SWATCH



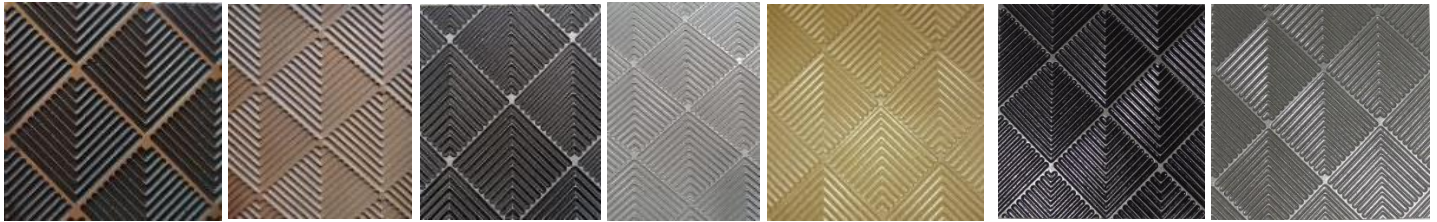
GROOVED_ALUMINIUM_DARK_SHEET



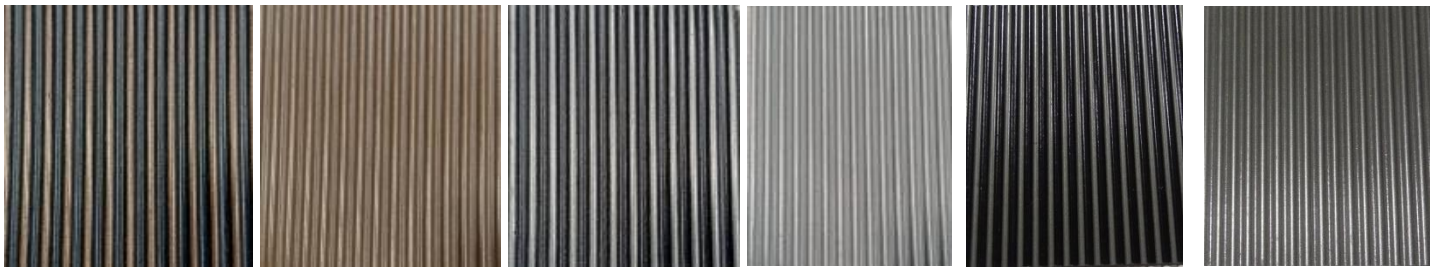
BRONZE & ALUMINUM_DARK_SAMPLE-SWATCHES



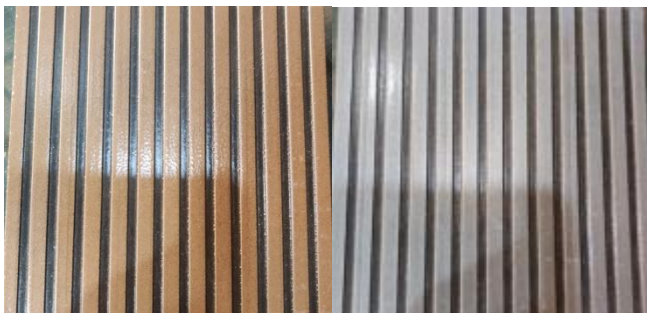
BEAD-BLAST_BZ_DARK & _NATURAL **ALU_DARK & _NATURAL** **COPPER_NATURAL** **Gold-BZ & Ni-Si_NATURAL**



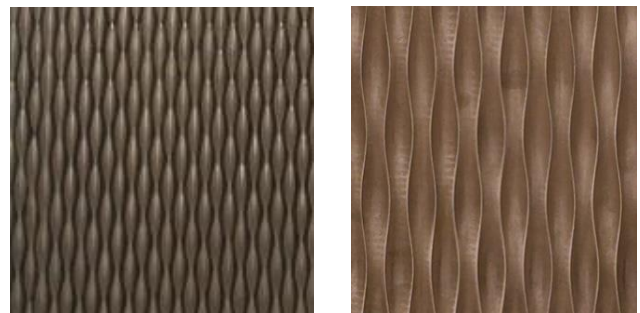
CHEVRON_BZ_DARK & _NATURAL **ALU_DARK & _NATURAL** **Gold-BZ_DARK** **Ni-Si_DARK & _NATURAL**



FLUTED_BRONZE_DARK & _NATURAL **ALUMINUM_DARK & _NATURAL** **Ni-Si_DARK & _NATURAL**



LOUVERS_BRONZE_DARK **LOUVERS_ALUMINUM_DARK**



HONEYCOMB_BRONZE_DARK & _NATURAL

B) CRYSTAL QUARTZ BONDED S3 SURFACES™:

Crystal Quartz Bonded is a surfacing sheet cast by blending crystalized advanced quartz material granules with a FRP matrix to create a sheet product that is flexible, light weight, extremely durable, easy to clean and having low maintenance. The standard RAL colour shades of Crystal Quartz Bonded are Bianca-White and Carbone-Charcoal. For larger quantities, the surfacing sheets can be made available in any custom RAL colour shades.



***Please note that -

- 1) The images shown in this document are to understand the pattern orientation.
- 2) Actual finishes or colours may vary slightly from those shown in this document because different computer monitors & mobile screens will render colours differently. Hence please refer physical samples for actual pattern/texture design, colour & finish.
- 3) The surfaces are handcrafted by our artists. As a result, every surface may have minor changes. Please do not consider them as flaws rather as artistic variations.
- 4) The physical small size marketing samples are mounted to aluminium backing for presentation purpose only. This aluminium backing material does not appear on the final product.

PATTERN & CODE	TYPE (SL/A/B/C/D/E)	CRYSTAL QUARTZ COLOUR OPTIONS	THICKNESS (Inches & mm)	STANDARD SHEET SIZE
BEAD-BLAST 024	SLIMLINE (SL) / STANDARD (A)	BIANCA-WHITE and CARBONE-CHARCOAL	0.100"/0.120" (2.5/3 mm)	48" x 120" (1219 x 3048 mm)
CHESS 025	STANDARD (A)	BIANCA-WHITE and CARBONE-CHARCOAL	0.120" (3 mm)	47.35" x 95.60" (1203 x 2428 mm)
CHEVRON 026	STANDARD (A)	BIANCA-WHITE and CARBONE-CHARCOAL	0.120" (3 mm)	48" x 96"/120" (1219 x 2438/3048 mm)
CREEPER 027	STANDARD (A)	BIANCA-WHITE and CARBONE-CHARCOAL	0.120" (3 mm)	48" x 96" (1219 x 2438 mm)
CUTTER 028	STANDARD (A)	BIANCA-WHITE and CARBONE-CHARCOAL	0.120" (3 mm)	48" x 96" (1219 x 2438 mm)
ECLIPSIS, a Door Pattern 029	STANDARD DOOR PATTERN (Left & Right Hand Sheets) (D)	BIANCA-WHITE and CARBONE-CHARCOAL	0.260" (6.5 mm)	48" x 96" (1219 x 2438 mm)
EGYPTIAN 030	STANDARD (A)	BIANCA-WHITE and CARBONE-CHARCOAL	0.120" (3 mm)	48" x 96" (1219 x 2438 mm)
FABRIC 031	STANDARD (A)	BIANCA-WHITE and CARBONE-CHARCOAL	0.120" (3 mm)	48" x 96" (1219 x 2438 mm)
FEATHER 032	STANDARD (A)	BIANCA-WHITE and CARBONE-CHARCOAL	0.120" (3 mm)	48" x 96" (1219 x 2438 mm)
FLUTED 033	STANDARD (B)	BIANCA-WHITE and CARBONE-CHARCOAL	0.138" (3.5 mm)	48" x 96"/120" (1219 x 2438/3048 mm)
FROND 034	STANDARD (A)	BIANCA-WHITE and CARBONE-CHARCOAL	0.120" (3 mm)	48" x 96" (1219 x 2438 mm)
GROOVED 035	STANDARD (A)	BIANCA-WHITE and CARBONE-CHARCOAL	0.120" (3 mm)	48" x 96" (1219 x 2438 mm)
HONEYCOMB 036	STANDARD (C)	BIANCA-WHITE and CARBONE-CHARCOAL	0.220" (5.5 mm)	48" x 96" (1219 x 2438 mm)
LOUVERS 037	STANDARD (B)	BIANCA-WHITE and CARBONE-CHARCOAL	0.155" (3.9 mm)	48" x 96" (1219 x 2438 mm)
PETAL 038	STANDARD (A)	BIANCA-WHITE and CARBONE-CHARCOAL	0.120" (3 mm)	48" x 96" (1219 x 2438 mm)
PRISMATIC 039	STANDARD (D)	BIANCA-WHITE and CARBONE-CHARCOAL	0.260" (6.5 mm)	48" x 96" (1219 x 2438 mm)
SOLARIS, a Door Pattern 040	STANDARD DOOR PATTERN (Left & Right hand sheets) (E)	BIANCA-WHITE and CARBONE-CHARCOAL	0.320" (8.0 mm)	48" x 96"/120" (1219 x 2438/3048 mm)
SOLARIS, a Feature Wall Pattern 041	FEATURE WALL (Combination of Left & Right Hand side Sheets) (E)	BIANCA-WHITE and CARBONE-CHARCOAL	0.320" (8.0 mm)	96" x 216" (8 Feet x 18 Feet) (2438 x 5486 mm)
THAR 042	STANDARD (A)	BIANCA-WHITE and CARBONE-CHARCOAL	0.1147" (3.7 mm)	48" x 96" (1219 x 2438 mm)
TREAD 043	STANDARD (A)	BIANCA-WHITE and CARBONE-CHARCOAL	0.120" (3.0 mm)	48" x 96" (1219 x 2438 mm)
WAVES (CROSS) 044	STANDARD (D)	BIANCA-WHITE and CARBONE-CHARCOAL	0.236" (6.0 mm)	48" x 96" (1219 x 2438 mm)
WAVES (Horizontal-1) 045	STANDARD (D)	BIANCA-WHITE and CARBONE-CHARCOAL	0.256" (6.5 mm)	48" x 96" (1219 x 2438 mm)
WAVES (Horizontal-2) 046	STANDARD (D)	BIANCA-WHITE and CARBONE-CHARCOAL	0.256" (6.5 mm)	48" x 96" (1219 x 2438 mm)
WAVES (VERTICAL) 047	STANDARD (D)	BIANCA-WHITE and CARBONE-CHARCOAL	0.256" (6.5 mm)	48" x 96" (1219 x 2438 mm)

MATERIAL SPECIFICICATIONS:

The chart below shows thickness and sheet size dimensions for all Crystal Quartz Bonded S3 Surfaces™ castings.

Dimensional tolerances are – a) For Thickness of sheets up to 4.5 mm, +/- 0.5 mm & above 4.5 mm, +/- 1 mm.

b) For sheet Width & Length, +/- 3 mm.

For backed castings, simply add your preferred backer thickness to the casting thickness shown.

Castings may be specified in any sheet size up to the maximum size indicated in the chart.

ENVIRONMENTAL CONSIDERATIONS:

For detailed environmental impact information, please refer to the Product Environmental Data Sheet - Crystal Qrtz Bonded S3 Surfaces™.

HOW TO SPECIFY AND ORDER:

To order product, please indicate pattern, type, colour, size and quantity.

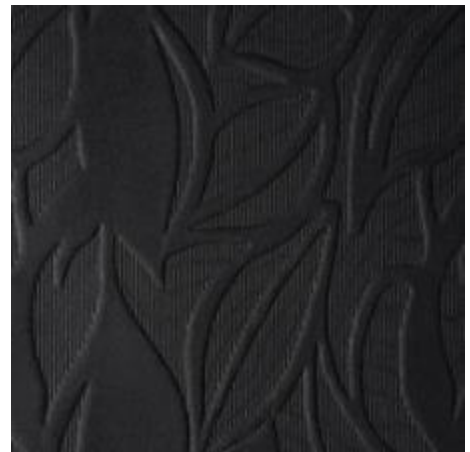
PATTERNS AND COLOUR OPTIONS:



CHESS_BIANCA-WHITE_QUARTZ



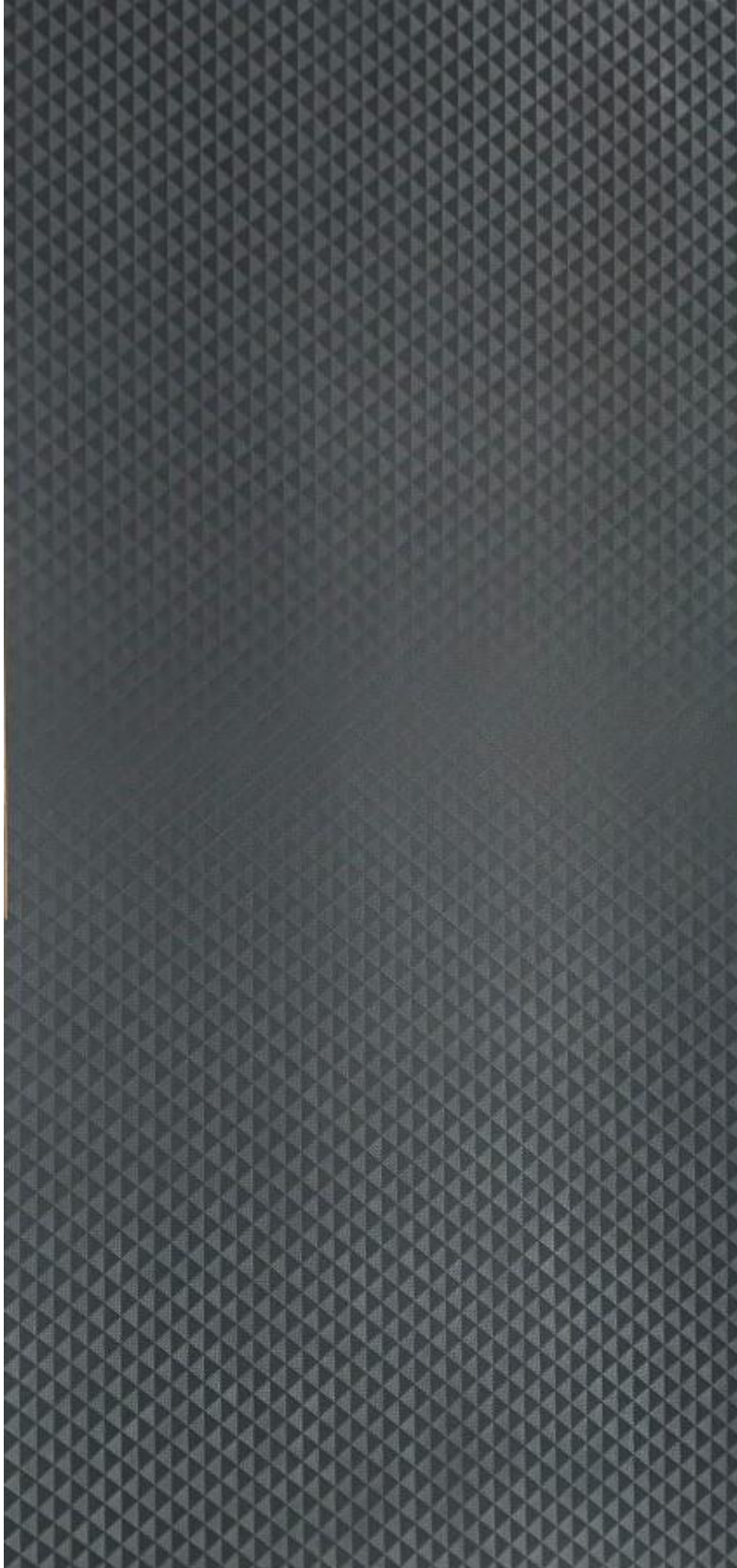
CREEPER_CARBONE-CHARCOAL_QUARTZ



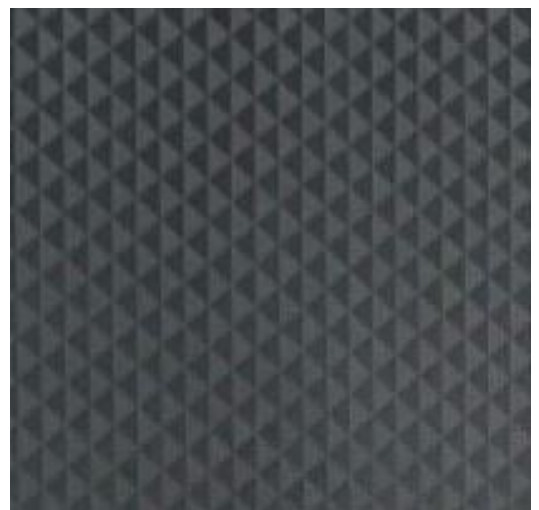
CUTTER_CARBONE-CHARCOAL_QUARTZ



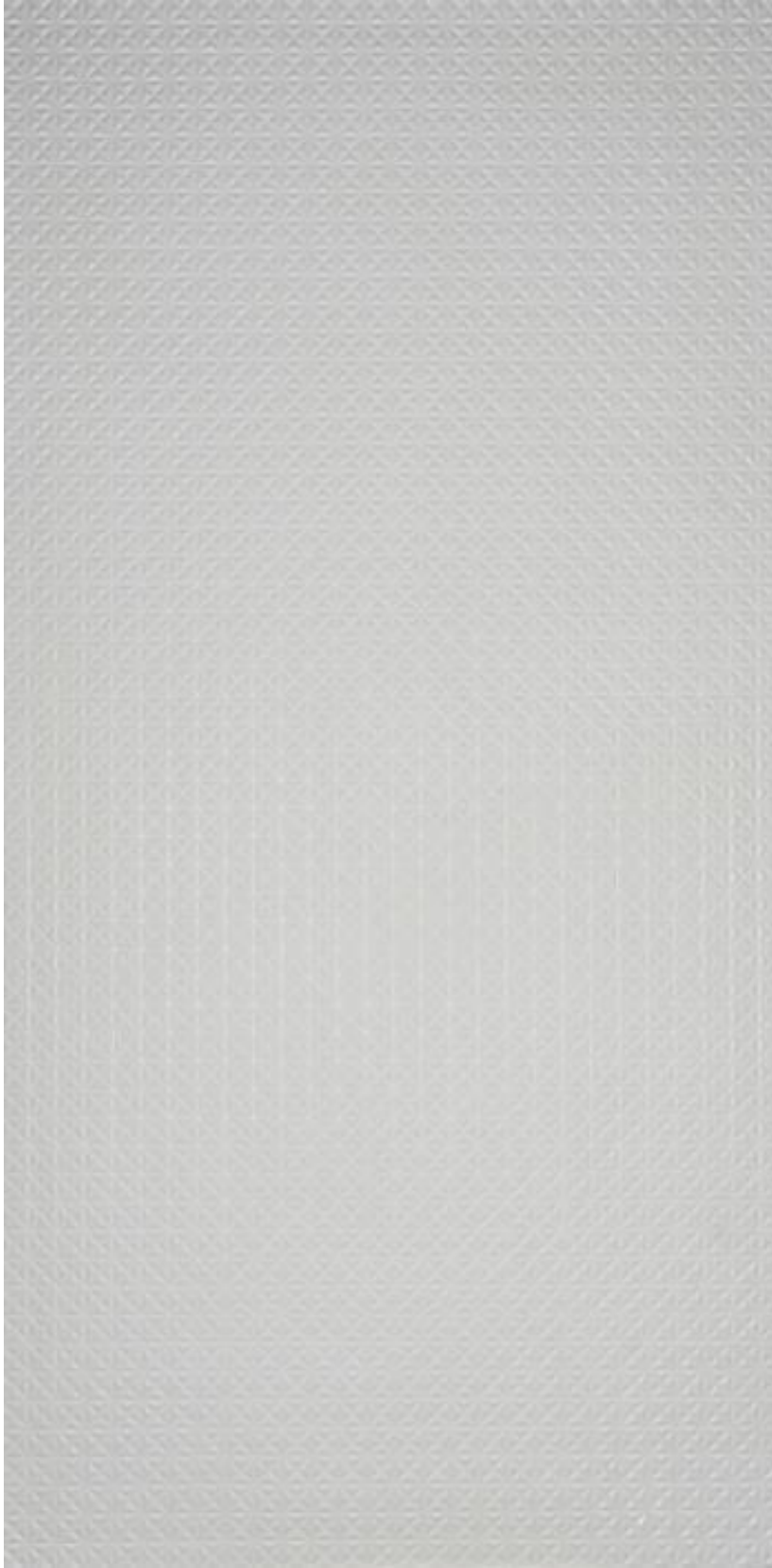
BEAD-BLAST_BIANCA-WHITE_QUARTZ



CHEVRON_CARBONE-CHARCOAL_QUARTZ_SHEET



SAMPLE-SWATCH



PRISMATIC_BIANCA-WHITE_QUARTZ_SHEET



SAMPLE-SWATCH



WAVES-HORIZONTAL(Option1)_BIANCA-WHITE_QUARTZ_SHEET



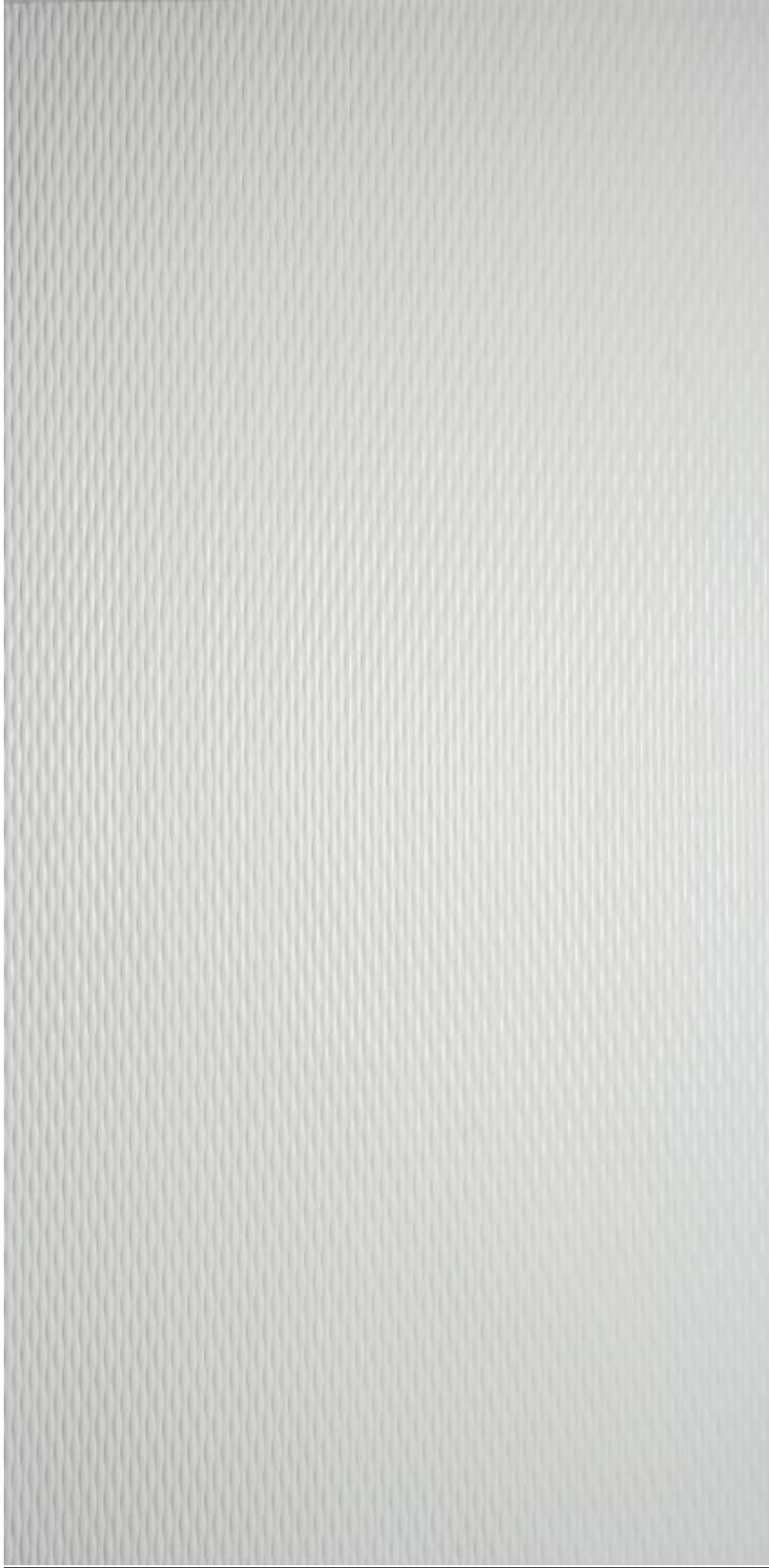
SAMPLE-SWATCH



WAVES-HORIZONTAL(Option2)_BIANCA-WHITE_QUARTZ_SHEET



SAMPLE-SWATCH



HONEYCOMB_BIANCA-WHITE_QUARTZ_SHEET



SAMPLE-SWATCH



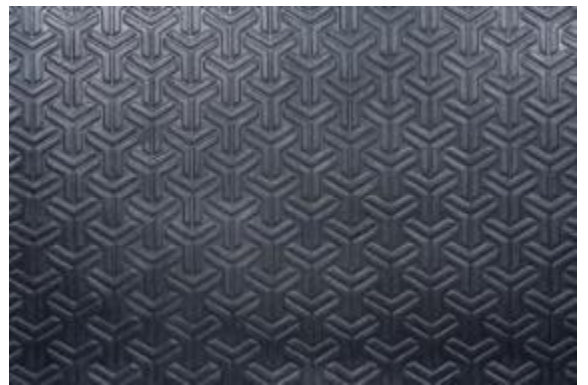
CHESS_CARBONE-CHARCOAL_QUARTZ_SHEET



SAMPLE-SWATCH



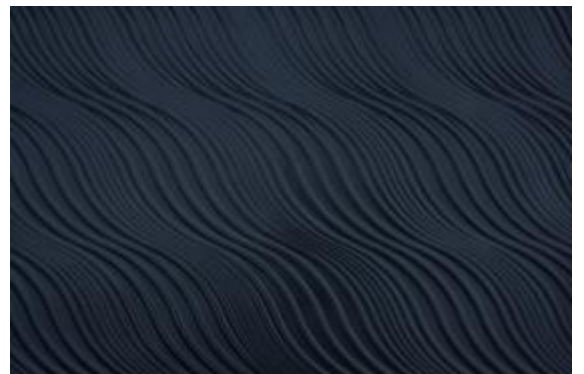
TREAD_CARBONE-CHARCOAL_QUARTZ_SHEET



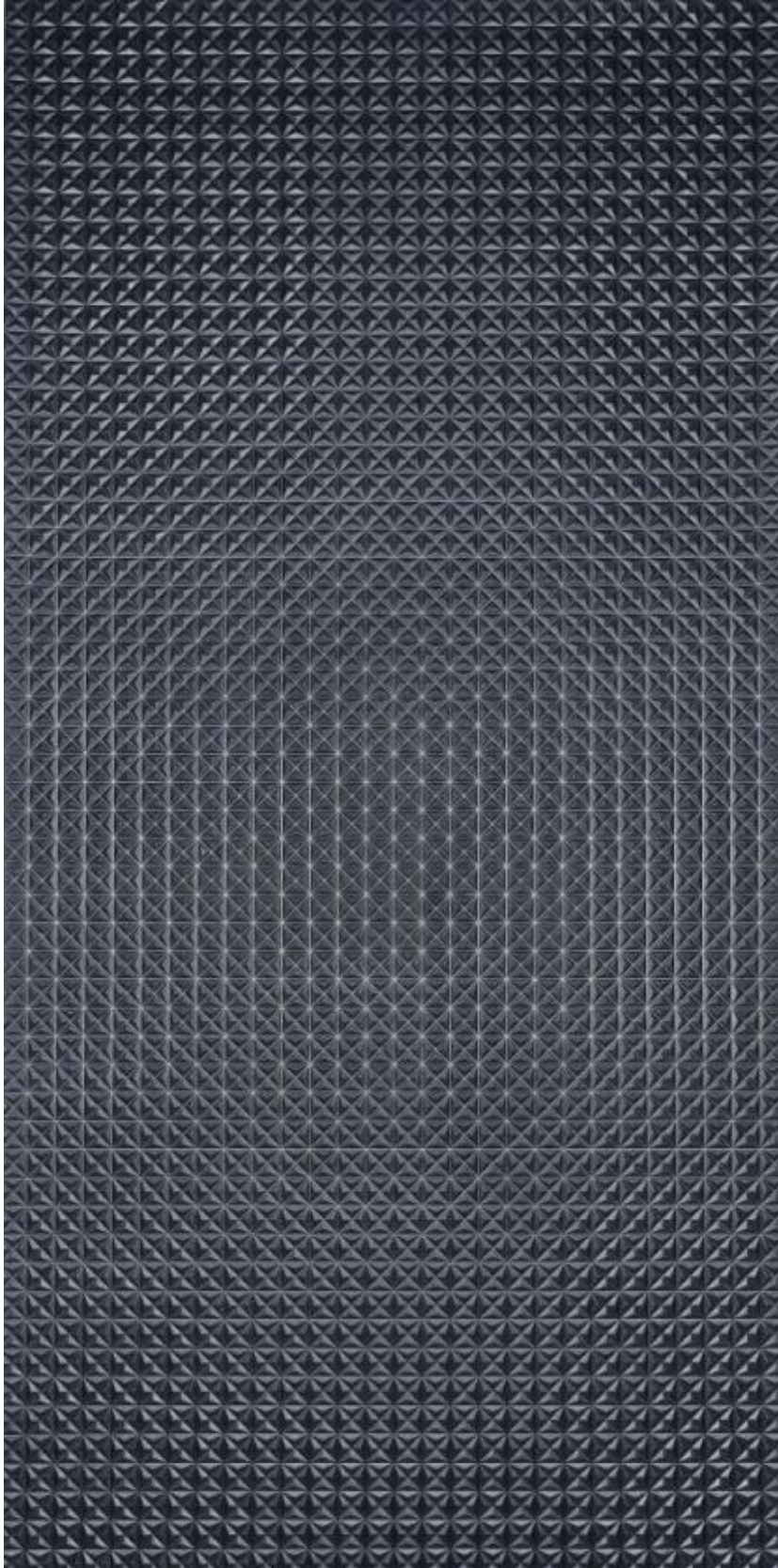
SAMPLE-SWATCH



WAVES-CROSS_CARBONE-CHARCOAL_QUARTZ_SHEET



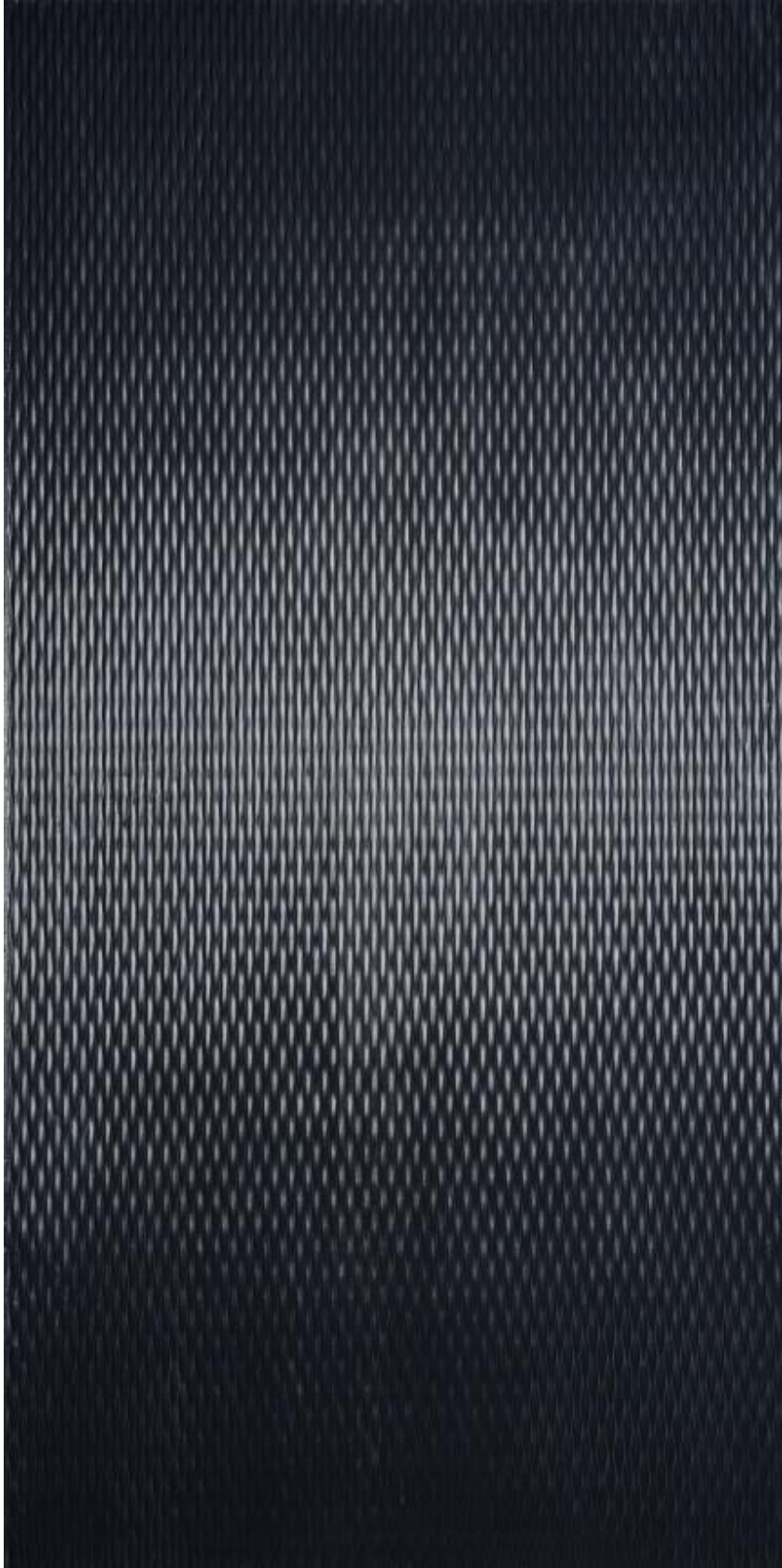
SAMPLE-SWATCH



PRISMATIC_CARBONE-CHARCOAL_QUARTZ_SHEET



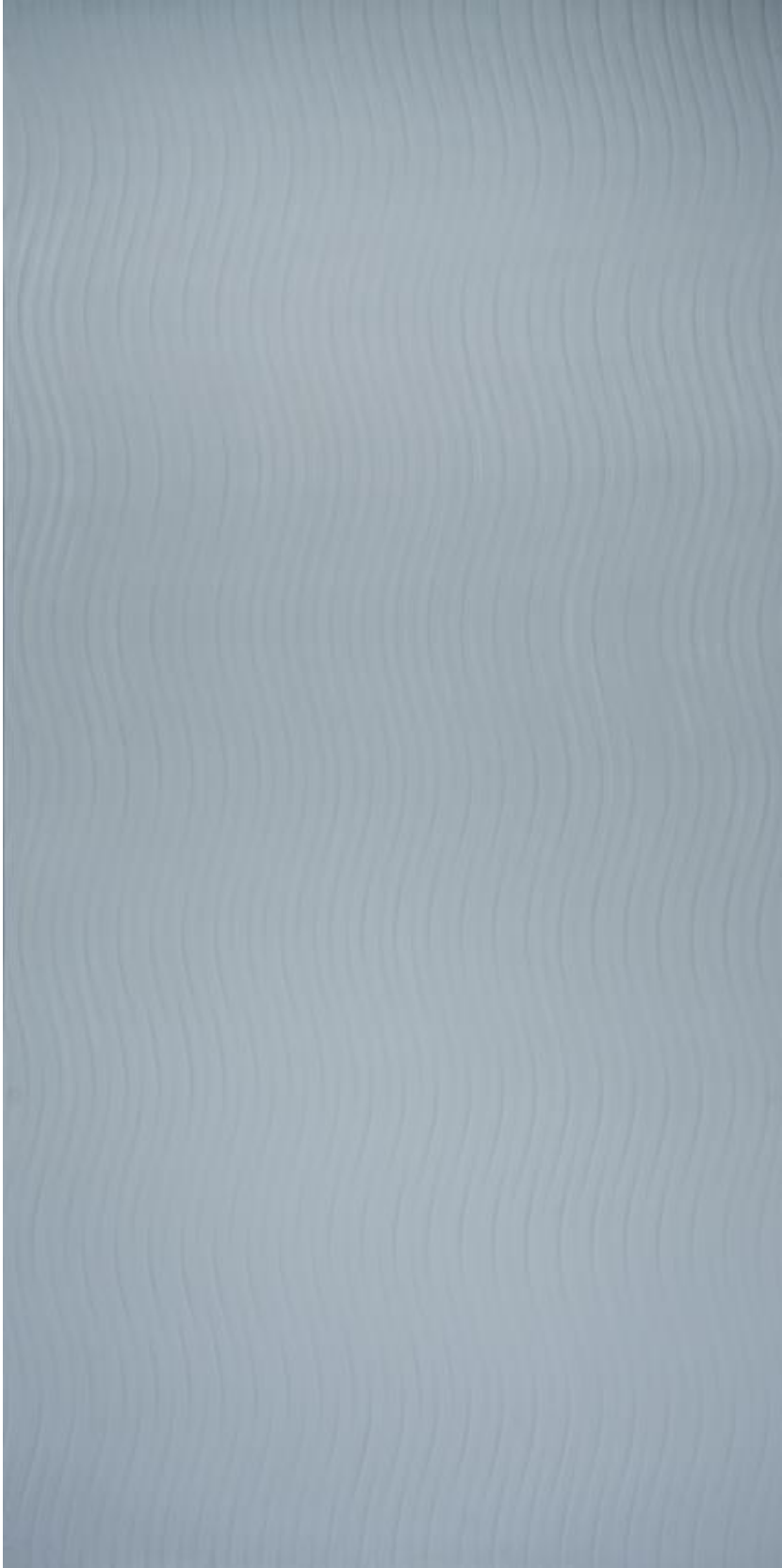
SAMPLE-SWATCH



HONEYCOMB_CARBONE-CHARCOAL_QUARTZ_SHEET



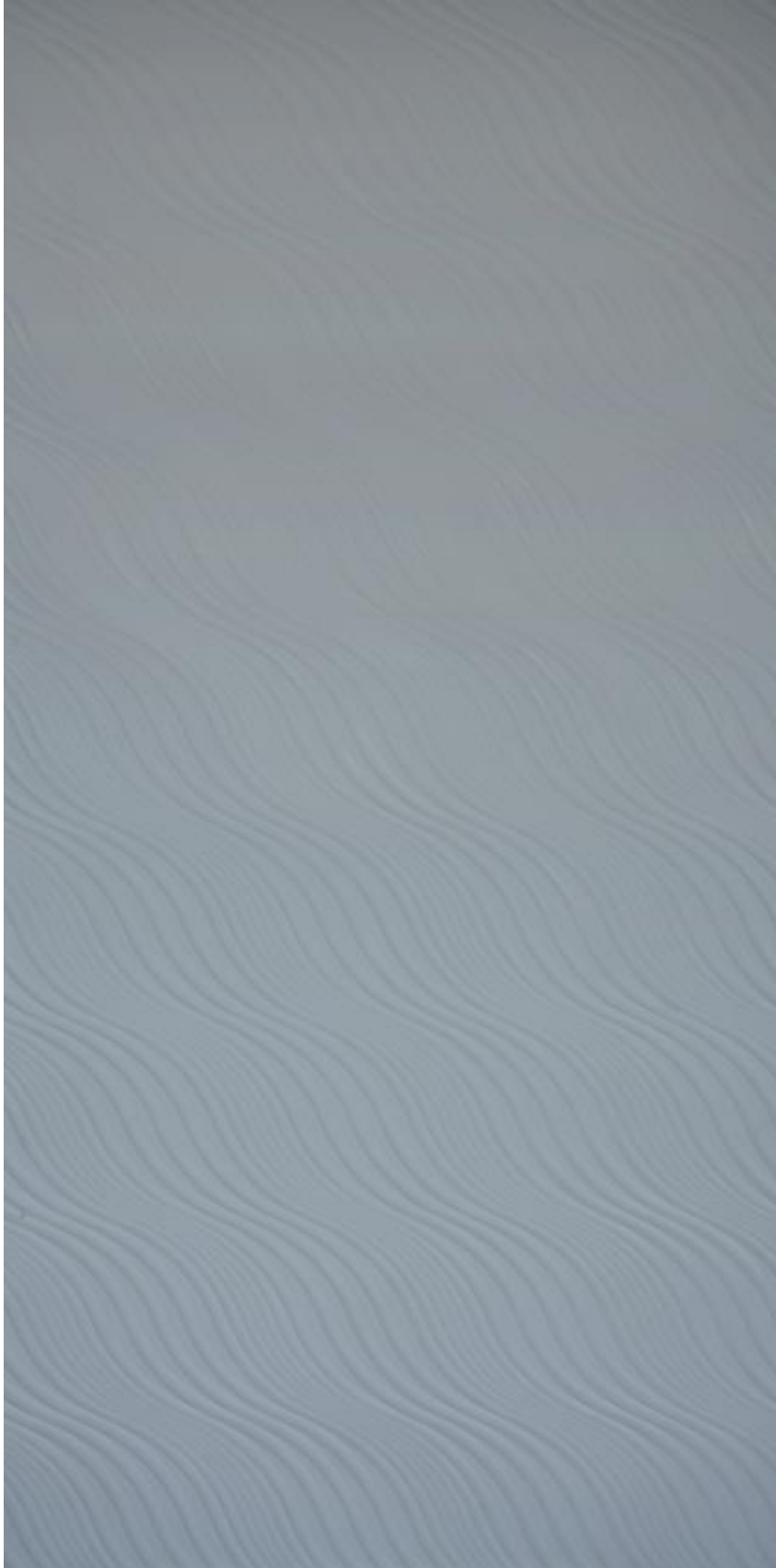
SAMPLE-SWATCH



WAVES-VERTICAL_BIANCA-WHITE_QUARTZ_SHEET



SAMPLE SWATCH



WAVES-CROSS_BIANCA-WHITE_QUARTZ-SHEET



SAMPLE SWATCH



Please contact below for more information, enquiry & order.

S3 SURFACES INDIA PRIVATE LIMITED

GSTIN: 27ABGCS6442L1ZV | MSME Registration Number: UDYAM-MH-26-0143636
CIN: U45201PN2021PTC203410

Registered Office:

R-1/6, Shree Laxmivihar, Near Mahalaxmi Temple,
Hadapsar, Pune – 411028. INDIA
Contact: +91 9370468182 / 9595305151

E-mail: | shantaram.pawar@s3-surfaces.com | sales@s3-surfaces.com |

Web Link: <https://www.s3-surfaces.com/>