

Certificate of Analysis

Company: VT Terps, LLC

39 Main St

Proctor, VT 05765

Customer ID: 191002-1

Grower License #: MANU0072

Sample ID: 1.JC6.CC1[8.2] THC

Lot: N/A

Matrix: Concentrate

Date Sampled: N/A

Date Received: 10/31/2023

Report Date: 11/16/2023

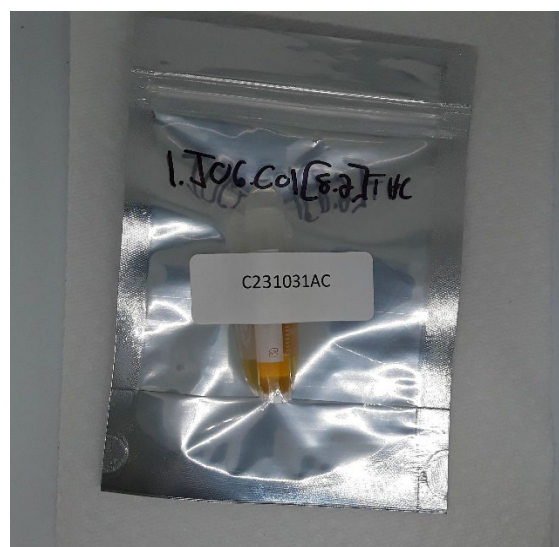
Date Analyzed: 11/14/2023

Analyst: 054

Report ID: C231031AC

Cannabinoid Summary

Cannabinoid Profile	LOQ (mg/g)	Concentration (mg/g)	Weight (%)
CBDVA	0.0005	<LOQ	<LOQ
CBDV	0.0012	<LOQ	<LOQ
CBDA	0.0008	<LOQ	<LOQ
CBGA	0.0008	<LOQ	<LOQ
CBG	0.0019	9.25	0.93
CBD	0.0019	2.15	0.21
THCV	0.0021	5.56	0.56
CBN	0.0013	11.75	1.18
Δ^9 -THC	0.0020	865.23	86.52
Δ^8 -THC	0.0019	<LOQ	<LOQ
THC-A	0.0034	<LOQ	<LOQ
CBC	0.0024	<LOQ	<LOQ
Total THC		865.23	86.52
Total CBD		2.15	0.21
Total Cannabinoids		893.95	89.40

86.52%
Total THC
0.21%
Total CBD
89.4%
**Total
Cannabinoids**
86.52%
 Δ^9 -THC
N/A
**Percent
Moisture**
1 : 0
**THC : CBD
Ratio**


Cannabinoids Methodology: High Performance Liquid Chromatography (HPLC) using PerkinElmer FLEXAR™ with Photo Diode Array Detector (PDA)

Total CBD and total THC are calculated values, to account for assumed decarboxylation from the acid form (THCA or CBDA) to the neutral form, causing weight loss of the acid group. These values are calculated as follows:

Total THC = (THCA x 0.877) + Δ^9 -THC

Total CBD = (CBDA x 0.877) + CBD

Ratio of Total CBD: Total THC

Reagent Blanks: < LOQs for all analytes

LOQ = The lowest quantity that this method can reliably detect. Any cannabinoid that was not detected is assumed to be less than the stated LOQ (<LOQ).

All results reflect dry weight of material, based on % moisture of the sample.

Measurement of Uncertainty (MU): the parameter, associated with the result of a measurement, that characterizes the dispersion of the values that could reasonably be attributed to the particular quantity subject to measurement.

Δ^9 -THC MU = $\pm 0.005\%$

Total THC MU = $\pm 0.007\%$

All other cannabinoid MU values are available upon request.

All moisture analysis is determined by loss-on-drying measurement using OHAUS Model MB90 Moisture Content Readers.

This report shall not be reproduced except in full without approval of the laboratory. This is to provide assurance that parts of a report are not taken out of context. Results apply to the samples as received.

Certified by:



Luke Emerson Mason (Laboratory Director, Bia Diagnostics)