

Soaring Eight

PRICING PLAN DEMOLITION GENERAL NOTES

- A. DEMOLITION PROCEDURES ARE THE SOLE RESPONSIBILITY OF THE GENERAL CONTRACTOR.
- B. ITEMS TO BE DEMOLISHED AS INDICATED ON THE DRAWINGS ARE INTENDED TO SHOW THE GENERAL SCOPE OF THE DEMOLITION WORK.
- C. THE DRAWINGS DO NOT REPRESENT IN DETAIL ALL ITEMS OR SITUATIONS THAT MAY BE ENCOUNTERED DURING DEMOLITION. IT IS THE GENERAL CONTRACTOR'S RESPONSIBILITY TO REMOVE, PROTECT, AND MAKE CORRECTIONS AS REQUIRED TO ACHIEVE DRAWING INTENT.
- D. THE GENERAL CONTRACTOR SHALL FIELD VERIFY EXACT QUANTITIES OF ALL ITEMS TO BE REMOVED.
- E. THE GENERAL CONTRACTOR SHALL CONTINUALLY REMOVE ALL CONSTRUCTION RUBBISH AND WASTE MATERIALS DAILY. GC TO REMOVE AND DISPOSE OF ALL DEBRIS FROM THE SITE IN A LEGAL MANNER.
- F. GC TO PROVIDE TEMPORARY COVERS OR TENTS AS REQUIRED TO PREVENT THE INFILTRATION OF PRECIPITATION, WIND, OR DUST TO THE INTERIOR OF THE STRUCTURE.
- G. THE GENERAL CONTRACTOR SHALL PATCH AND REPAIR ALL EXISTING CONSTRUCTION DISTURBED BY THE WORK.
- H. PROVIDE AND MAINTAIN SHORING, BRACING, AND STRUCTURAL SUPPORTS AS REQUIRED TO PRESERVE STABILITY AND PREVENT MOVEMENT, SETTLEMENT, OR COLLAPSE OF CONSTRUCTION AND FINISHES TO REMAIN, AND TO PREVENT UNEXPECTED OR UNCONTROLLED MOVEMENT OR COLLAPSE OF CONSTRUCTION BEING DEMOLISHED.
- I. GC TO COORDINATE WITH PROPER UTILITY COMPANIES PRIOR TO REMOVAL OF EXISTING UTILITIES.
- J. THE GENERAL CONTRACTOR SHALL LOCATE, IDENTIFY, SHUT OFF, DISCONNECT, AND SEAL OR CAP OFF INDICATED UTILITY SERVICES AND MECHANICAL/ELECTRICAL SYSTEMS SERVING AREAS OR EQUIPMENT SCHEDULE TO BE SELECTIVELY DEMOLISHED.
- K. NEATLY CUT OPENINGS AND HOLES, PLUMB, SQUARE AND TRUE TO DIMENSIONS REQUIRED. USE CUTTING METHODS LEAST LIKELY TO DAMAGE CONSTRUCTION TO REMAIN OR ADJOINING CONSTRUCTION.
- L. GC TO VERIFY LOCATION OF EXISTING ELECTRICAL AND PLUMBING AND ALL MECHANICAL DUCT WORK. CAP ABANDONED PLUMBING LINES AS REQUIRED FOR NEW WORK. COORDINATE DEMOLITION OF ALL FIXTURES WITH MPE DRAWINGS BEFORE COMMENCING ANY WORK.
- M. GC TO REMOVE TO SOURCE ALL ABANDONED COMMUNICATION CABLES (DATA, TELEPHONE, FIRE ALARM, AND AUDIO/VIDEO CABLES) IF NOT TAGGED FOR FUTURE USE.
- N. EXISTING PIPES NOT INDICATED ON DRAWINGS (STEAM, WATER, DRAINAGE, GAS, VENT, PIPE, STACKS, ETC.) WHICH ARE TO BE REMOVED DURING DEMOLITION, MUST BE BROUGHT TO THE ATTENTION OF THE ARCHITECT AND VERIFIED BY THE GENERAL CONTRACTOR AS PER THEIR USE.
- O. COORDINATE FULL SCOPE OF DEMOLITION WITH FLOOR PLAN:
 - 1. REMOVE ALL EXISTING CORNER GUARDS, MAINTAIN RETAINER IN PLACE TO ACCOMMODATE NEW CORNER GUARD PRODUCT & COLOR.
- P. IT IS NOT EXPECTED THAT HAZARDOUS MATERIALS WILL BE ENCOUNTERED IN THE WORK. IF HAZARDOUS MATERIALS ARE ENCOUNTERED, DO NOT DISTURB; IMMEDIATELY NOTIFY ARCHITECT AND OWNER. HAZARDOUS MATERIALS WILL BE REMOVED BY BUILDING OWNER UNDER A SEPARATE CONTRACT.
- Q. GC TO COORDINATE WITH STARDUST, RESTORE, OR EQUAL FOR DEMOLITION MATERIALS NOT RETAINED BY OWNER/TENANT.
- R. MAINTAIN SERVICES/SYSTEMS INDICATED TO REMAIN AND PROTECT THEM AGAINST DAMAGE DURING SELECTIVE DEMOLITION OPERATIONS. BEFORE PROCEEDING WITH DEMOLITION, PROVIDE TEMPORARY SERVICES/SYSTEMS THAT BYPASS AREA OF SELECTIVE DEMOLITION AND THAT MAINTAIN CONTINUITY OF SERVICES/SYSTEMS TO OTHER PARTS OF THE BUILDING.
- S. REMOVE DEMOLITION WASTE MATERIALS FROM PROJECT SITE AND LEGALLY DISPOSE OF THEM IN AN EPA-APPROVED LANDFILL. DO NOT BURN DEMOLISHED MATERIALS.

KEYED NOTES

DRAWING CONVENTIONS

- EXISTING PARTITION TO REMAIN
- PARTITION TO BE DEMOLISHED
- EXISTING DOOR TO REMAIN
- DOOR TO BE DEMOLISHED
- EXISTING CEILING
- CEILING TO BE DEMOLISHED
- EXISTING GWB CEILING AND/OR SOFFIT
- CEILING AND/OR SOFFIT TO BE DEMOLISHED



1 DEMOLITION PLAN

1/4" = 1'-0"



REV DATE DESCRIPTION

PROJECT NUMBER:

23-031.2

ISSUE DATE:

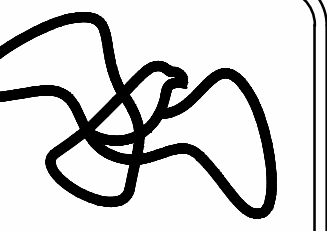
04/05/2024

SHEET TITLE:

DEMOLITION PLAN

SHEET NUMBER:

PP-1.0



Soaring Eight

6/7/2024 12:31:40 PM E:\006 PROJECTS\23-0104 - Soaring Eight LLC - PROJECTS (2023)\23-031 SMI - Clement, Elise DWG\23-011.2 SMI - Clement II - 2nd Floor.rvt This drawing is the property of Soaring Eight, L.L.C., 9626 N 26th Place Phoenix, AZ 85028, 480.221.2425. This drawing is limited to the original use for which it was prepared. Changes, reproductions, or assigning to any third party of this drawing for any other use is not permitted without written consent of Soaring Eight, L.L.C. © 2023



1 REFLECTED CEILING PLAN
1/4" = 1'-0"

RCP GENERAL NOTES

- A. GC TO REVIEW CEILING LAYOUT AS SHOWN AND NOTIFY ARCHITECT OF ANY CONFLICTS WITH STRUCTURAL, ELECTRICAL, MECHANICAL, PIPE WORK, FIRE PROTECTION SYSTEMS, ETC. BEFORE PROCEEDING WITH CONSTRUCTION.
- B. NEW SUSPENDED ACOUSTICAL CEILING GRID WHERE SHOWN.
 - 1. PROVIDE: DIRECT-HUNG SYSTEM; ATTACHMENT DEVICES; SIZED FOR 5 TIMES THE DESIGN LOAD INDICATED IN ASTM C 635, TABLE 1, DIRECT HUNG
 - 2. WIRE HANGERS, BRACES, AND TIES: ZINC-COATED CARBON-STEEL WIRE. SIZE: PROVIDE YIELD STRENGTH AT LEAST 3 TIMES THE HANGER DESIGN LOAD BUT NOT LESS THAN 0.106-INCH DIAMETER WIRE.
- C. ACOUSTIC PANELS: INSTALL ACOUSTIC PANELS WITH UNDAMAGED EDGES AND FIT ACCURATELY INTO SUSPENSION SYSTEM RUNNERS AND EDGE MOLDINGS. SCRIBE AND CUT PANELS AT BORDERS AND PENETRATIONS TO PROVIDE A NEAT, PRECISE FIT.
- D. SPECIFICATIONS:
 - 1. MANUFACTURER: ARMSTRONG
 - 2. STYLE: DUNE, REGULAR 2'X2'X5/8" TILES
 - 3. GRID: 15/16" PRELUDE, MANUFACTURER FACTORY PAINTED WHITE FINISH. (NOTE: IN MRI ROOM ONLY USE ALL ALUMINUM, NON FERROMAGNETIC GRID)
- E. INSTALL NEW CEILINGS TO COMPLY WITH ALL SEISMIC RESTRAINT REQUIREMENTS IN ACCORDANCE WITH ALL LOCAL BUILDING CODES. SEE DETAILS **198.20/A-901**.
- F. REFER TO ELECTRICAL ENGINEERING DOCUMENTS FOR LIGHT FIXTURES SPECIFICATION AND ADDITIONAL INFORMATION.
- G. UNLESS NOTED OTHERWISE DOWN LIGHTS AND PENDANTS SHALL BE CENTERED IN ACT OR INSTALLED WHERE SPECIFIED IN PLANS.
- H. UNLESS NOTED OTHERWISE ALL GWB CEILINGS TO BE PAINTED. REFER TO FINISH LEGEND FOR LOCATIONS AND SPECIFICATIONS.
- I. GC TO IDENTIFY AND COORDINATE LOCATIONS OF ALL CEILING ELEMENTS INCLUDING LIGHTING, MECHANICAL DIFFUSERS, RETURN AIR GRILLES, FIRE PROTECTION DEVICES, ACCESS PANELS, EXIT SIGNS, AUDIOVISUAL EQUIPMENT, SECURITY DEVICES, ETC. FOR CONFLICTS. IF CONFLICTS OCCUR NOTIFY ARCHITECT PRIOR TO INSTALLATION OF ANY SUCH ELEMENTS.
- J. GC TO NOTIFY ARCHITECT OF ANY REQUIREMENTS FOR ACCESS PANELS NOT SHOWN ON DOCUMENTS BEFORE PROCEEDING WITH CONSTRUCTION.
- K. GC TO CONFIRM THAT INSULATION AS REQUIRED BY PERMITTED SHELL DRAWINGS IS IN PLACE.
- L. REFER TO THIS SHEET FOR TYPICAL ELECTRICAL, SWITCHING, AND COMMUNICATIONS DEVICE MOUNTING COLOR AND LOCATIONS.
- M. ALL MATERIALS USED WITHIN THE MRI ROOM SHALL BE NON FERROMAGNETIC.
- N. CEILING HEIGHTS NOTED PER ROOM UNLESS NOTED OTHERWISE.

KEYED NOTES

NO KEYED NOTES PRESENT ON THIS SHEET.

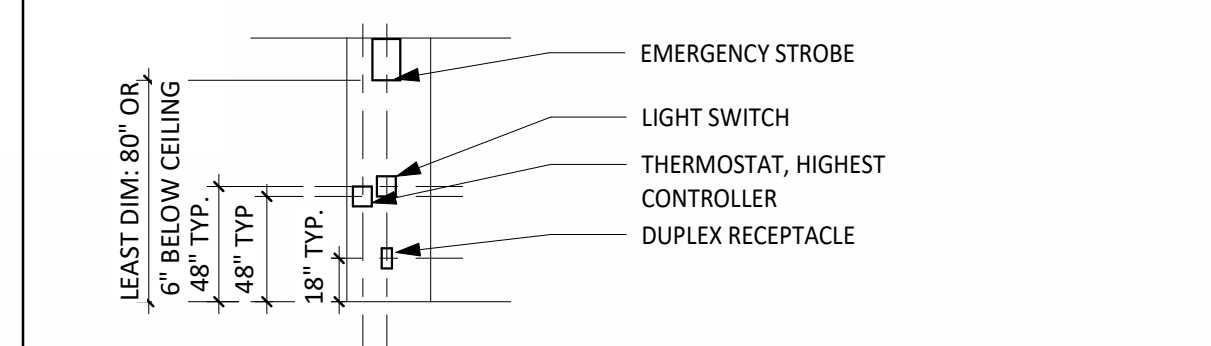
RCP SYMBOLS LEGEND:
(SEE ELECTRICAL & MECHANICAL SHEETS FOR MORE INFO)

NEW ACT CEILING	EXISTING CEILING	12'-10" CEILING HEIGHT TAG
NEW GWB CEILING AND/OR SOFFIT	EXISTING GWB CEILING AND/OR SOFFIT	NEW / EXISTING EXIT SIGN
NEW FLUORESCENT FIXTURE - 2'x4' / 2'x2'	EXISTING FIXTURE TO REMAIN	NEW / EXISTING DOWNLIGHT
NEW HVAC RETURN / EXHAUST / SUPPLY	EXISTING HVAC TO REMAIN	NEW / EXISTING WALL WASHER LIGHT
NEW / EXISTING HVAC SIDEWALL DIFFUSER	NEW / EXISTING X-RAY IN USE SIGN	NEW / EXISTING LINEAR LIGHT FIXTURE

DEVICE GENERAL NOTES AND LOCATIONS:

THE GENERAL CONTRACTOR SHALL BE RESPONSIBLE TO COORDINATE ALL TRADES AND THE LOCATION OF ALL DEVICES PER THE FOLLOWING:

- A. LOCATE DEVICES PER ARCHITECTURAL PLANS, SECTIONS AND ELEVATIONS.
- B. ALL ELECTRICAL, SWITCHING, AND COMMUNICATION DEVICE COVERS TO BE **WHITE**.
- C. WHERE SHOWN ON THE MECHANICAL AND ELECTRICAL DRAWINGS BUT NOT ON THE ARCHITECTURAL DRAWING, DEVICES SHALL BE UNIFORMLY AND SYMMETRICALLY MOUNTED. VERTICALLY ALIGN DEVICES MOUNTED AT HEIGHTS INDICATED UNLESS SEPARATED HORIZONTALLY BY A MINIMUM OF 24".
- D. DEVICES INSTALLED IN MASONRY OR SURFACES TO RECEIVE SPECIALTY FINISHES SHALL BE INSPECTED BY THE ARCHITECT AT TIME OF ROUGH-IN.
- E. DEVIATIONS FROM THESE PRINCIPLES WITHOUT PRIOR APPROVAL WILL BE CORRECTED BY THE CONTRACTOR AT NO COST TO THE OWNER.
- F. AVOID DEVICE PLACEMENT IN THE CENTER OF WALLS AS PRACTICALLY FEASIBLE.



REV	DATE	DESCRIPTION

PROJECT NUMBER:

23-031.2

ISSUE DATE:

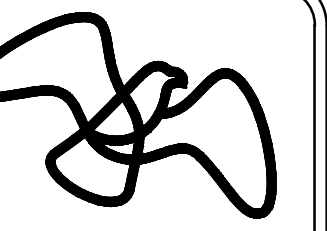
02/06/2024

SHEET TITLE:

REFLECTED CEILING PLAN

SHEET NUMBER:

PP-3.0



Soaring Eight

6/7/2024 12:35:11 PM E:\006 PROJECTS\23-0104 - Soaring Eight LLC - PROJECTS (2023)\23-031 SMI - Clement, URS DWG\23-031.2 SMI - Clement II - 2nd Floor.rvt This drawing is the property of Soaring Eight, L.L.C., 9626 N 26th Place Phoenix, AZ 85028, 480.221.2425. This drawing is limited to the original use for which it was prepared. Changes, reproductions, or assigning to any third party of this drawing for any other use is not permitted without written consent of Soaring Eight, L.L.C. © 2023



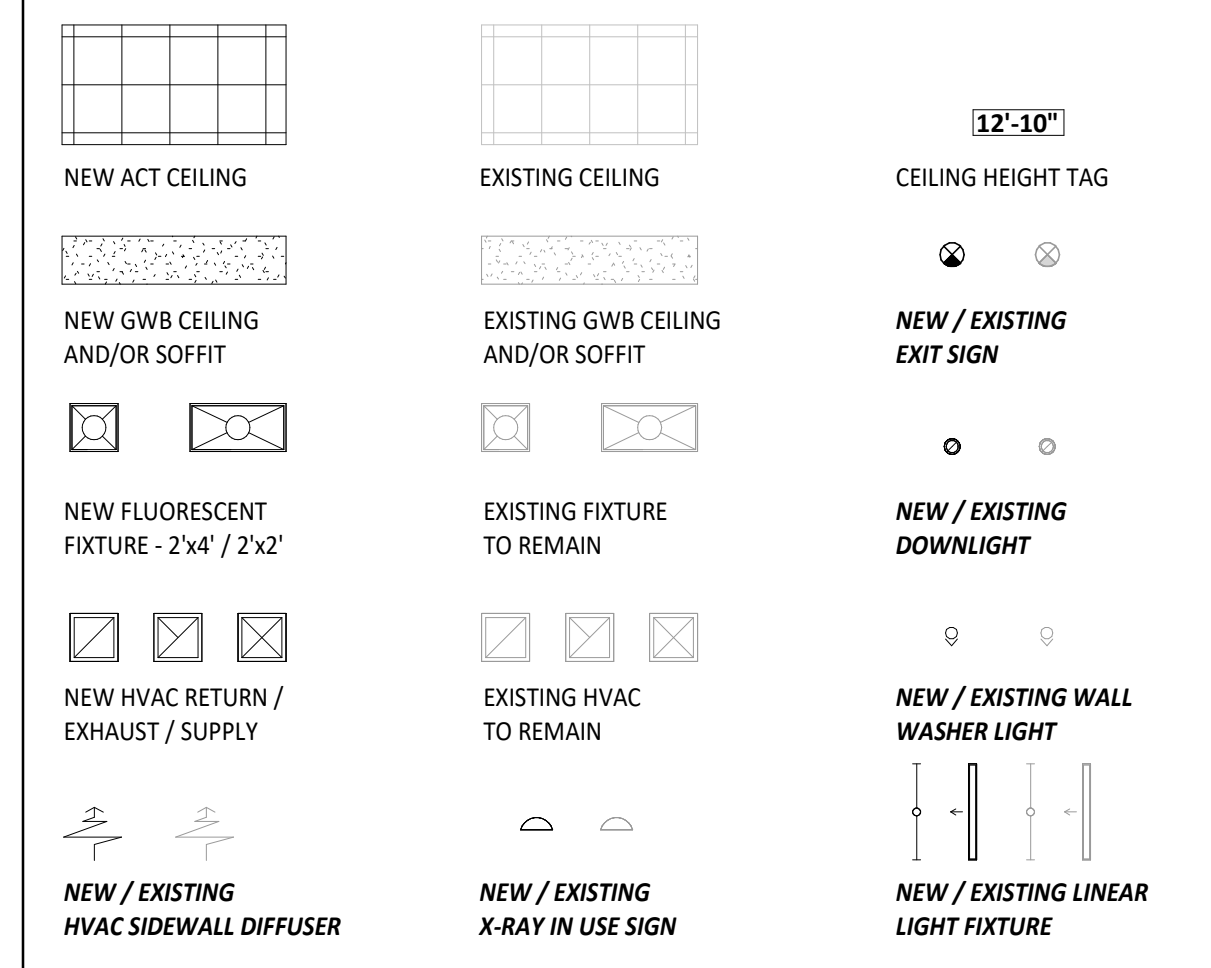
1 REFLECTED CEILING PLAN
1/4" = 1'-0"

RCP GENERAL NOTES

- A. GC TO REVIEW CEILING LAYOUT AS SHOWN AND NOTIFY ARCHITECT OF ANY CONFLICTS WITH STRUCTURAL, ELECTRICAL, MECHANICAL, PIPE WORK, FIRE PROTECTION SYSTEMS, ETC. BEFORE PROCEEDING WITH CONSTRUCTION.
- B. NEW SUSPENDED ACOUSTICAL CEILING GRID WHERE SHOWN.
 - 1. PROVIDE: DIRECT-HUNG SYSTEM; ATTACHMENT DEVICES; SIZED FOR 5 TIMES THE DESIGN LOAD INDICATED IN ASTM C 635, TABLE 1, DIRECT HUNG
 - 2. WIRE HANGERS, BRACES, AND TIES: ZINC-COATED CARBON-STEEL WIRE. SIZE: PROVIDE YIELD STRENGTH AT LEAST 3 TIMES THE HANGER DESIGN LOAD BUT NOT LESS THAN 0.106-INCH DIAMETER WIRE.
- C. ACOUSTIC PANELS: INSTALL ACOUSTIC PANELS WITH UNDAMAGED EDGES AND FIT ACCURATELY INTO SUSPENSION SYSTEM RUNNERS AND EDGE MOLDINGS. SCRIBE AND CUT PANELS AT BORDERS AND PENETRATIONS TO PROVIDE A NEAT, PRECISE FIT.
- D. SPECIFICATIONS:
 - 1. MANUFACTURER: ARMSTRONG
 - 2. STYLE: DUNE, REGULAR 2'X2'X5/8" TILES
 - 3. GRID: 15/16" PRELUDE, MANUFACTURER FACTORY PAINTED WHITE FINISH. (NOTE: IN MRI ROOM ONLY USE ALL ALUMINUM, NON FERROMAGNETIC GRID)
- E. INSTALL NEW CEILINGS TO COMPLY WITH ALL SEISMIC RESTRAINT REQUIREMENTS IN ACCORDANCE WITH ALL LOCAL BUILDING CODES. SEE DETAILS **198.20/A-901**.
- F. REFER TO ELECTRICAL ENGINEERING DOCUMENTS FOR LIGHT FIXTURES SPECIFICATION AND ADDITIONAL INFORMATION.
- G. UNLESS NOTED OTHERWISE DOWN LIGHTS AND PENDANTS SHALL BE CENTERED IN ACT OR INSTALLED WHERE SPECIFIED IN PLANS.
- H. UNLESS NOTED OTHERWISE ALL GWB CEILINGS TO BE PAINTED. REFER TO FINISH LEGEND FOR LOCATIONS AND SPECIFICATIONS.
- I. GC TO IDENTIFY AND COORDINATE LOCATIONS OF ALL CEILING ELEMENTS INCLUDING LIGHTING, MECHANICAL DIFFUSERS, RETURN AIR GRILLES, FIRE PROTECTION DEVICES, ACCESS PANELS, EXIT SIGNS, AUDIOVISUAL EQUIPMENT, SECURITY DEVICES, ETC. FOR CONFLICTS. IF CONFLICTS OCCUR NOTIFY ARCHITECT PRIOR TO INSTALLATION OF ANY SUCH ELEMENTS.
- J. GC TO NOTIFY ARCHITECT OF ANY REQUIREMENTS FOR ACCESS PANELS NOT SHOWN ON DOCUMENTS BEFORE PROCEEDING WITH CONSTRUCTION.
- K. GC TO CONFIRM THAT INSULATION AS REQUIRED BY PERMITTED SHELL DRAWINGS IS IN PLACE.
- L. REFER TO THIS SHEET FOR TYPICAL ELECTRICAL, SWITCHING, AND COMMUNICATIONS DEVICE MOUNTING COLOR AND LOCATIONS.
- M. ALL MATERIALS USED WITHIN THE MRI ROOM SHALL BE NON FERROMAGNETIC.
- N. CEILING HEIGHTS NOTED PER ROOM UNLESS NOTED OTHERWISE.

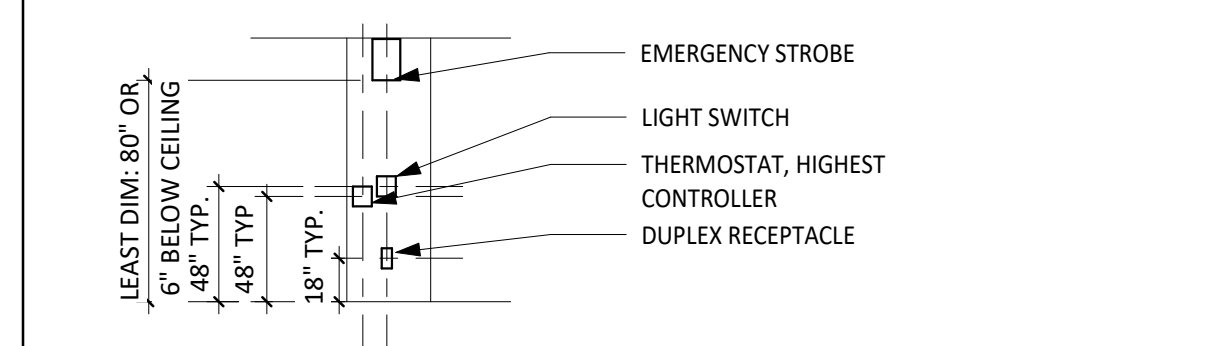
KEYED NOTES #

RCP SYMBOLS LEGEND:
(SEE ELECTRICAL & MECHANICAL SHEETS FOR MORE INFO)



DEVICE GENERAL NOTES AND LOCATIONS:

- THE GENERAL CONTRACTOR SHALL BE RESPONSIBLE TO COORDINATE ALL TRADES AND THE LOCATION OF ALL DEVICES PER THE FOLLOWING:
- A. LOCATE DEVICES PER ARCHITECTURAL PLANS, SECTIONS AND ELEVATIONS.
 - B. ALL ELECTRICAL, SWITCHING, AND COMMUNICATION DEVICE COVERS TO BE **WHITE**.
 - C. WHERE SHOWN ON THE MECHANICAL AND ELECTRICAL DRAWINGS BUT NOT ON THE ARCHITECTURAL DRAWING, DEVICES SHALL BE UNIFORMLY AND SYMMETRICALLY MOUNTED. VERTICALLY ALIGN DEVICES MOUNTED AT HEIGHTS INDICATED UNLESS SEPARATED HORIZONTALLY BY A MINIMUM OF 24".
 - D. DEVICES INSTALLED IN MASONRY OR SURFACES TO RECEIVE SPECIALTY FINISHES SHALL BE INSPECTED BY THE ARCHITECT AT TIME OF ROUGH-IN.
 - E. DEVIATIONS FROM THESE PRINCIPLES WITHOUT PRIOR APPROVAL WILL BE CORRECTED BY THE CONTRACTOR AT NO COST TO THE OWNER.
 - F. AVOID DEVICE PLACEMENT IN THE CENTER OF WALLS AS PRACTICALLY FEASIBLE.



REV	DATE	DESCRIPTION

PROJECT NUMBER:

23-031.2

ISSUE DATE:

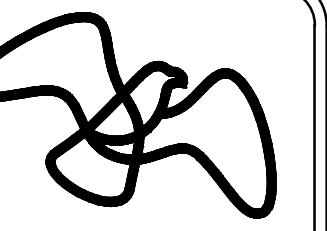
04/05/2024

SHEET TITLE:

DEMO RCP

SHEET NUMBER:

PP-3.0



Soaring Eight

FINISH SCHEDULE

NAME	DESCRIPTION	MANUFACTURER	STYLE / COLOR / ETC.	SIZE	INSTALLATION NOTES	NOTES
LVT-1*	LUXURY VINYL TILE	SHAW CONTRACT	VY252 QUIET COVER / 00250 NATURAL	6"X48"	SEE FINISH PLAN FOR DIRECTION	
RB-1	RUBBER BASE	TARKETT	TRADITIONAL VINYL 1/8" - TYPE TV COVED PROFILE / COLOR: CHARCOAL	4" H	PERFORMED OUTSIDE AND INSIDE CORNERS	
TS-1	FLOOR TRANSITION	SCHLUTER	RENO-U / SATIN ANODIZED ALUMINUM		OPTIONAL, SEE TRANSITION DETAILS	
TS-3	FLOOR TRANSITION	SCHLUTER	DILEX-AHK / SATIN ANODIZED ALUMINUM		FLOOR TILE TO WALL TILE TRANSITION	
CG-1	CORNER GUARDS	INPRO CORP	160 SURFACE MOUNT / 0258 CHINO	2" WING, 48" TALL	MOUNTED RIGHT ABOVE BASE	
PT-1	PAINT	SHERWIN WILLIAMS	SW 7567 NATURAL TAN / SHEEN: VELVET			THROUGHOUT (WALLS & CEILINGS), U.N.O.
PT-2	PAINT	SHERWIN WILLIAMS	SW 7567 NATURAL TAN / SHEEN: SEMI-GLOSS			TOILET ROOM WALLS/ CEILINGS
PT-3	PAINT	SHERWIN WILLIAMS	SW 6992 INKWELL / SHEEN: GLOSS			HM DOOR FRAMES
PLM-1	PLASTIC LAMINATE	NEVAMAR	VA7002T TEXTURED FINISH, AEON SCRATCH RESISTANCE / COOL CHIC			ALL COUNTERTOPS & BENCHTOPS, U.N.O.
PLM-2	PLASTIC LAMINATE	WILSONART	7965K-12 SOFT GRAIN FINISH, AEON SCRATCH RESISTANCE / WALNUT HEIGHTS		VERTICAL GRAIN	ALL CABINET FACES, U.N.O.

PRICING PLAN SCOPE OF WORK NOTES

- A. PRIOR TO NEW PRIMER AND PAINT, PATCH ALL SURFACES AS REQUIRED TO RECEIVE NEW FINISH PER FINISH MANUFACTURER'S RECOMMENDATIONS.
- B. GC TO PROVIDE CORNER GUARDS AT ALL EXPOSED CORNERS WHERE SHOWN ON PLAN. (SEE KEYNOTE 31). REFER TO FINISH SCHEDULE FOR SPECIFICATION.
- C. REPLACE ALL DAMAGED CEILING TILES THROUGHOUT SUITE.
- D. PROVIDE NEW MINI-SPLIT IN EACH OF (2) MAMMO ROOMS.

SHOW ALTERNATES:

- #1. PAINT ENTIRE SUITE, ALL ROOMS (WALLS, GWB CEILINGS & BULKHEADS) PT-1 AND TOILET ROOMS PT-2; PAINT ALL EXISTING HOLLOW METAL DOORS FRAMES, PT-3; PROVIDE NEW LVT-1 AND RB-1 THROUGHOUT ENTIRE SUITE.

- #2. PROVIDE NEW LVT-1 AND RB-1 IN ALL AREAS SHOWN IN KEYNOTE 6.

- #3. PROVIDE AN ALLOWANCE FOR NEW DIMMABLE DOWNLIGHTS IN EACH OF (3) ULTRASOUND ROOMS, EACH OF (2) MAMMO ROOMS AND THE DEXA ROOM.

PRICING PLAN FINISHES GENERAL NOTES

- A. ALL PARTITIONS RECEIVING PAINT TO RECEIVE COMPLETE PRIMER COAT PRIOR TO FINISH PAINT COATS. REMOVE HARDWARE, LIGHTING FIXTURES, AND SIMILAR ITEMS THAT ARE NOT TO BE PAINTED. MASK ITEMS THAT CANNOT BE REMOVED. REINSTALL ITEMS IN EACH AREA AFTER PAINTING IS COMPLETE. PATCH CLEAN AND PREPARE SURFACES IN AN AREA BEFORE BEGINNING PAINTING IN THAT AREA. SCHEDULE PAINTING SO CLEANING OPERATIONS WILL NOT DAMAGE NEWLY PAINTED SURFACES.

APPLICATION SCHEDULE:

- A. GYPSUM BOARD:
 - 1. GLOSS LEVEL 3 LATEX: TWO COATS OVER LATEX PRIMER/SEALER
- B. STEEL:
 - 1. GLOSS LEVEL 4 LATEX: TWO COATS OVER ALKYD ANTICORROSIVE PRIMER
- C. WOOD: INCLUDING WOOD TRIM ARCHITECTURAL WOODWORK:
 - 1. SEMIGLOSS LATEX: TWO COATS OVER LATEX PRIMER FOR WOOD

- B. ALL FLOORING TRANSITIONS TO OCCUR AT CENTERLINE OF DOOR (UNO).

- C. GENERAL CONTRACTOR TO PROVIDE AND INSTALL SCHEDULED FLOORING FROM PARTITION TO PARTITION AND UNDER MILLWORK, WHERE ACCESSIBLE.

- D. GC TO PROVIDE NOT LESS THAN 10% EXTRA STOCK OF ALL FINISH MATERIALS TO OWNER.

KEYED NOTES

- 20 NEW LOCATION OF EXISTING DOOR.
- 22 NEW HI-LO COUNTERTOP.
- 31 CORNER GUARD, TYPICAL AS SHOWN. SEE FINISH SCHEDULE AND SPECIFICATION.



1 FIRST FLOOR PLAN
1/4" = 1'-0"

DRAWING CONVENTIONS

- NEW STANDARD PARTITION OR WALL INFILL
- EXISTING PARTITION
- EXISTING DOOR
- NEW DOOR
- CORNER GUARD

REV DATE DESCRIPTION

PROJECT NUMBER:

23-031.2

ISSUE DATE:

04/05/2024

SHEET TITLE:

FLOOR PLAN

SHEET NUMBER:

PP-2.0