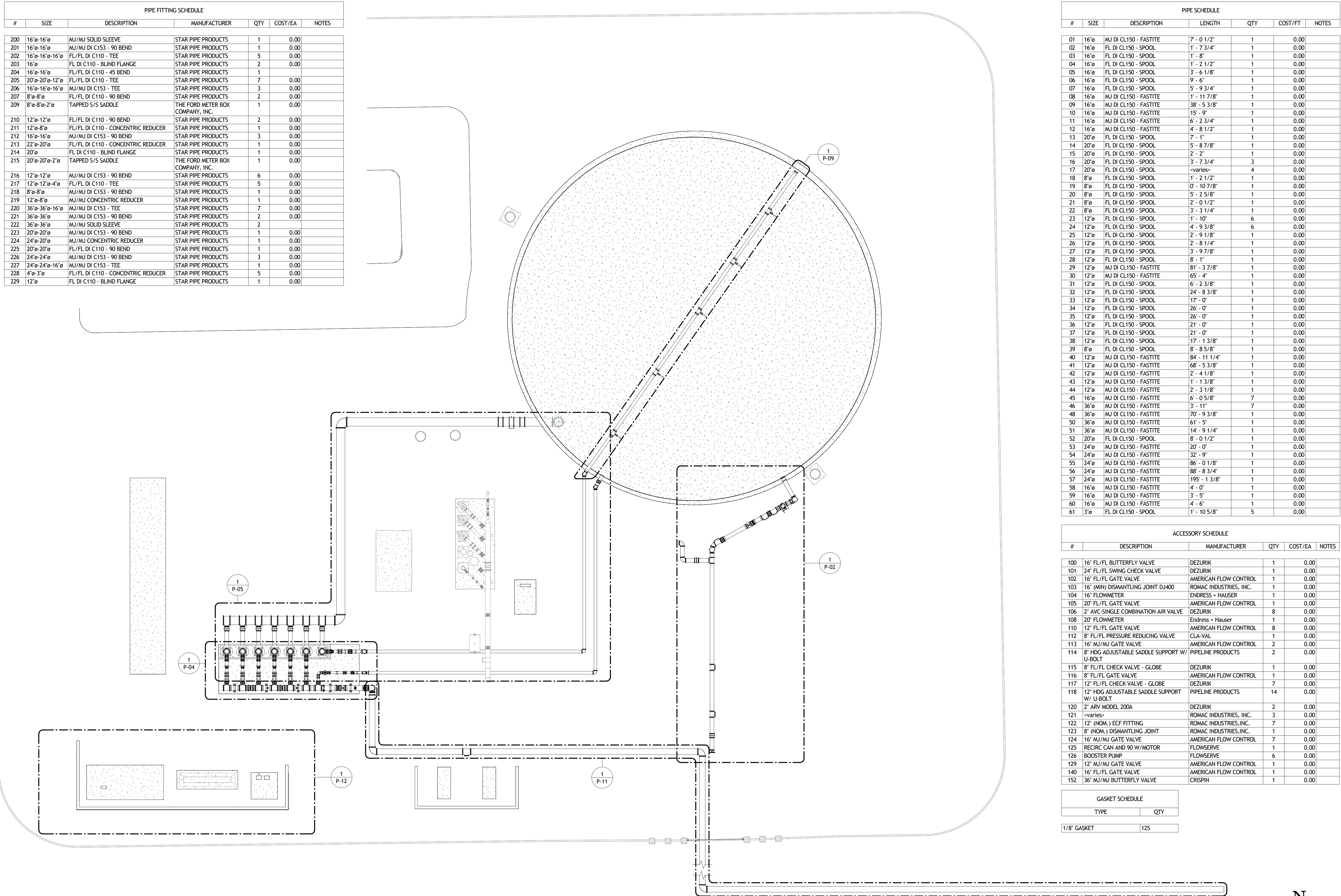


PIPE FITTING SCHEDULE						
#	SIZE	DESCRIPTION	MANUFACTURER	QTY	COST/EA	NOTES
200	16"ø-16"ø	MJ/MJ SOLID SLEEVE	STAR PIPE PRODUCTS	1	0.00	
201	16"ø-16"ø	MJ/MJ DI C153 - 90 BEND	STAR PIPE PRODUCTS	1	0.00	
202	16"ø-16"ø-16"ø	FL/FL DI C110 - TEE	STAR PIPE PRODUCTS	5	0.00	
203	16"ø	FL DI C110 - BLIND FLANGE	STAR PIPE PRODUCTS	2	0.00	
204	16"ø-16"ø	FL/FL DI C110 - 45 BEND	STAR PIPE PRODUCTS	1	0.00	
205	20"ø-20"ø-12"ø	FL/FL DI C110 - TEE	STAR PIPE PRODUCTS	7	0.00	
206	16"ø-16"ø-16"ø	MJ/MJ DI C153 - TEE	STAR PIPE PRODUCTS	3	0.00	
207	8"ø-8"ø	FL/FL DI C110 - 90 BEND	STAR PIPE PRODUCTS	2	0.00	
209	8"ø-8"ø-2"ø	TAPPED S/S SADDLE	THE FORD METER BOX COMPANY, INC.	1	0.00	
210	12"ø-12"ø	FL/FL DI C110 - 90 BEND	STAR PIPE PRODUCTS	2	0.00	
211	12"ø-8"ø	FL/FL DI C110 - CONCENTRIC REDUCER	STAR PIPE PRODUCTS	1	0.00	
212	16"ø-16"ø	MJ/MJ DI C153 - 90 BEND	STAR PIPE PRODUCTS	3	0.00	
213	22"ø-20"ø	FL/FL DI C110 - CONCENTRIC REDUCER	STAR PIPE PRODUCTS	1	0.00	
214	20"ø	FL DI C110 - BLIND FLANGE	STAR PIPE PRODUCTS	1	0.00	
215	20"ø-20"ø-2"ø	TAPPED S/S SADDLE	THE FORD METER BOX COMPANY, INC.	1	0.00	
216	12"ø-12"ø	MJ/MJ DI C153 - 90 BEND	STAR PIPE PRODUCTS	6	0.00	
217	12"ø-12"ø-4"ø	FL/FL DI C110 - TEE	STAR PIPE PRODUCTS	5	0.00	
218	8"ø-8"ø	MJ/MJ DI C153 - 90 BEND	STAR PIPE PRODUCTS	1	0.00	
219	12"ø-8"ø	MJ/MJ CONCENTRIC REDUCER	STAR PIPE PRODUCTS	1	0.00	
220	36"ø-36"ø-16"ø	MJ/MJ DI C153 - TEE	STAR PIPE PRODUCTS	7	0.00	
221	36"ø-36"ø	MJ/MJ DI C153 - 90 BEND	STAR PIPE PRODUCTS	2	0.00	
222	36"ø-36"ø	MJ/MJ SOLID SLEEVE	STAR PIPE PRODUCTS	2	0.00	
223	20"ø-20"ø	MJ/MJ DI C153 - 90 BEND	STAR PIPE PRODUCTS	1	0.00	
224	24"ø-20"ø	MJ/MJ CONCENTRIC REDUCER	STAR PIPE PRODUCTS	1	0.00	
225	20"ø-20"ø	FL/FL DI C110 - 90 BEND	STAR PIPE PRODUCTS	1	0.00	
226	24"ø-24"ø	MJ/MJ DI C153 - 90 BEND	STAR PIPE PRODUCTS	3	0.00	
227	24"ø-24"ø-16"ø	MJ/MJ DI C153 - TEE	STAR PIPE PRODUCTS	1	0.00	
228	4"ø-3"ø	FL/FL DI C110 - CONCENTRIC REDUCER	STAR PIPE PRODUCTS	5	0.00	
229	12"ø	FL DI C110 - BLIND FLANGE	STAR PIPE PRODUCTS	1	0.00	

PIPE SCHEDULE						
#	SIZE	DESCRIPTION	LENGTH	QTY	COST/FT	NOTES
01	16"ø	MJ DI CL150 - FASTITE	7 - 0 1/2"	1	0.00	
02	16"ø	FL DI CL150 - SPOOL	1' - 7 3/4"	1	0.00	
03	16"ø	FL DI CL150 - SPOOL	1' - 8"	1	0.00	
04	16"ø	FL DI CL150 - SPOOL	1' - 2 1/2"	1	0.00	
05	16"ø	FL DI CL150 - SPOOL	3' - 6 1/8"	1	0.00	
06	16"ø	FL DI CL150 - SPOOL	9' - 6"	1	0.00	
07	16"ø	FL DI CL150 - SPOOL	5' - 9 3/4"	1	0.00	
08	16"ø	MJ DI CL150 - FASTITE	1' - 11 7/8"	1	0.00	
09	16"ø	MJ DI CL150 - FASTITE	38' - 5 3/8"	1	0.00	
10	16"ø	MJ DI CL150 - FASTITE	15' - 9"	1	0.00	
11	16"ø	MJ DI CL150 - FASTITE	6' - 2 3/4"	1	0.00	
12	16"ø	MJ DI CL150 - FASTITE	4' - 8 1/2"	1	0.00	
13	20"ø	FL DI CL150 - SPOOL	7' - 1"	1	0.00	
14	20"ø	FL DI CL150 - SPOOL	5' - 8 7/8"	1	0.00	
15	20"ø	FL DI CL150 - SPOOL	2' - 2"	1	0.00	
16	20"ø	FL DI CL150 - SPOOL	3' - 7 3/4"	3	0.00	
17	20"ø	FL DI CL150 - SPOOL	<varies>	4	0.00	
18	8"ø	FL DI CL150 - SPOOL	1' - 2 1/2"	1	0.00	
19	8"ø	FL DI CL150 - SPOOL	0' - 10 7/8"	1	0.00	
20	8"ø	FL DI CL150 - SPOOL	5' - 2 5/8"	1	0.00	
21	8"ø	FL DI CL150 - SPOOL	2' - 0 1/2"	1	0.00	
22	8"ø	FL DI CL150 - SPOOL	3' - 3 1/4"	1	0.00	
23	12"ø	FL DI CL150 - SPOOL	1' - 10"	6	0.00	
24	12"ø	FL DI CL150 - SPOOL	4' - 9 3/8"	6	0.00	
25	12"ø	FL DI CL150 - SPOOL	2' - 9 1/8"	1	0.00	
26	12"ø	FL DI CL150 - SPOOL	2' - 8 1/4"	1	0.00	
27	12"ø	FL DI CL150 - SPOOL	3' - 9 7/8"	1	0.00	
28	12"ø	FL DI CL150 - SPOOL	8' - 1"	1	0.00	
29	12"ø	MJ DI CL150 - FASTITE	81' - 3 7/8"	1	0.00	
30	12"ø	MJ DI CL150 - FASTITE	65' - 4"	1	0.00	
31	12"ø	FL DI CL150 - SPOOL	6' - 2 3/8"	1	0.00	
32	12"ø	FL DI CL150 - SPOOL	24' - 8 3/8"	1	0.00	
33	12"ø	FL DI CL150 - SPOOL	17' - 0"	1	0.00	
34	12"ø	FL DI CL150 - SPOOL	26' - 0"	1	0.00	
35	12"ø	FL DI CL150 - SPOOL	26' - 0"	1	0.00	
36	12"ø	FL DI CL150 - SPOOL	21' - 0"	1	0.00	
37	12"ø	FL DI CL150 - SPOOL	21' - 0"	1	0.00	
38	12"ø	FL DI CL150 - SPOOL	17' - 1 3/8"	1	0.00	
39	8"ø	FL DI CL150 - SPOOL	8' - 8 5/8"	1	0.00	
40	12"ø	MJ DI CL150 - FASTITE	84' - 11 1/4"	1	0.00	
41	12"ø	MJ DI CL150 - FASTITE	68' - 5 3/8"	1	0.00	
42	12"ø	MJ DI CL150 - FASTITE	2' - 4 1/8"	1	0.00	
43	12"ø	MJ DI CL150 - FASTITE	1' - 1 3/8"	1	0.00	
44	12"ø	MJ DI CL150 - FASTITE	2' - 3 1/8"	1	0.00	
45	16"ø	MJ DI CL150 - FASTITE	6' - 0 5/8"	7	0.00	
46	36"ø	MJ DI CL150 - FASTITE	3' - 11"	7	0.00	
48	36"ø	MJ DI CL150 - FASTITE	70' - 9 3/8"	1	0.00	
50	36"ø	MJ DI CL150 - FASTITE	61' - 5"	1	0.00	
51	36"ø	MJ DI CL150 - FASTITE	14' - 9 1/4"	1	0.00	
52	20"ø	FL DI CL150 - SPOOL	8' - 0 1/2"	1	0.00	
53	24"ø	MJ DI CL150 - FASTITE	20' - 0"	1	0.00	
54	24"ø	MJ DI CL150 - FASTITE	32' - 9"	1	0.00	
55	24"ø	MJ DI CL150 - FASTITE	86' - 0 1/8"	1	0.00	
56	24"ø	MJ DI CL150 - FASTITE	88' - 8 3/4"	1	0.00	
57	24"ø	MJ DI CL150 - FASTITE	195' - 1 3/8"	1	0.00	
58	16"ø	MJ DI CL150 - FASTITE	4' - 0"	1	0.00	
59	16"ø	MJ DI CL150 - FASTITE	3' - 5"	1	0.00	
60	16"ø	MJ DI CL150 - FASTITE	4' - 6"	1	0.00	
61	3"ø	FL DI CL150 - SPOOL	1' - 10 5/8"	5	0.00	

ACCESSORY SCHEDULE						
#	DESCRIPTION	MANUFACTURER	QTY	COST/EA	NOTES	
100	16" FL/FL BUTTERFLY VALVE	DEZURIK	1	0.00		
101	24" FL/FL SWING CHECK VALVE	DEZURIK	1	0.00		
102	16" FL/FL GATE VALVE	AMERICAN FLOW CONTROL	1	0.00		
103	16" (MIN) DISMANTLING JOINT DJ400	ROMAC INDUSTRIES, INC.	1	0.00		
104	16" FLOWMETER	ENDRESS + HAUSER	1	0.00		
105	20" FL/FL GATE VALVE	AMERICAN FLOW CONTROL	1	0.00		
106	2" AVC-SINGLE COMBINATION AIR VALVE	DEZURIK	8	0.00		
108	20" FLOWMETER	Endress + Hauser	1	0.00		
110	12" FL/FL GATE VALVE	AMERICAN FLOW CONTROL	8	0.00		
112	8" FL/FL PRESSURE REDUCING VALVE	CLA-VAL	1	0.00		
113	16" MJ/MJ GATE VALVE	AMERICAN FLOW CONTROL	2	0.00		
114	8" HDG ADJUSTABLE SADDLE SUPPORT W/ U-BOLT	PIPELINE PRODUCTS	2	0.00		
115	8" FL/FL CHECK VALVE - GLOBE	DEZURIK	1	0.00		
116	8" FL/FL GATE VALVE	AMERICAN FLOW CONTROL	1	0.00		
117	12" FL/FL CHECK VALVE - GLOBE	DEZURIK	7	0.00		
118	12" HDG ADJUSTABLE SADDLE SUPPORT W/ U-BOLT	PIPELINE PRODUCTS	14	0.00		
120	2" ARV MODEL 200A	DEZURIK	2	0.00		
121	<varies>	ROMAC INDUSTRIES, INC.	3	0.00		
122	12" (NOM.) ECF FITTING	ROMAC INDUSTRIES, INC.	7	0.00		
123	8" (NOM.) DISMANTLING JOINT	ROMAC INDUSTRIES, INC.	1	0.00		
124	16" MJ/MJ GATE VALVE	AMERICAN FLOW CONTROL	7	0.00		
125	RECIRC CAN AND 90 W/MOTOR	FLOWSERVE	1	0.00		
126	BOOSTER PUMP	FLOWSERVE	6	0.00		
129	12" MJ/MJ GATE VALVE	AMERICAN FLOW CONTROL	1	0.00		
140	16" FL/FL GATE VALVE	AMERICAN FLOW CONTROL	1	0.00		
152	36" MJ/MJ BUTTERFLY VALVE	CRISPIN	1	0.00		

GASKET SCHEDULE	
TYPE	QTY
1/8" GASKET	125



2 SITE PLAN
1/16" = 1'-0"

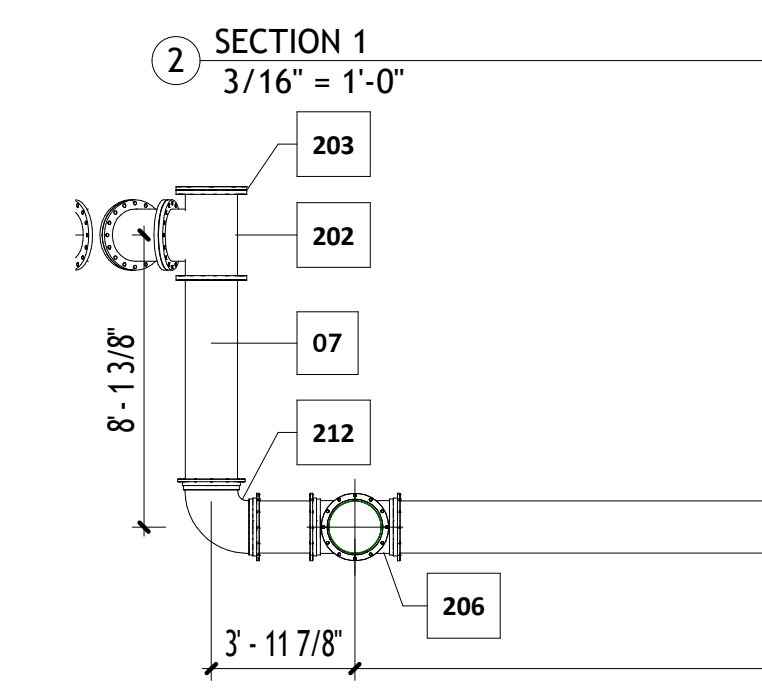
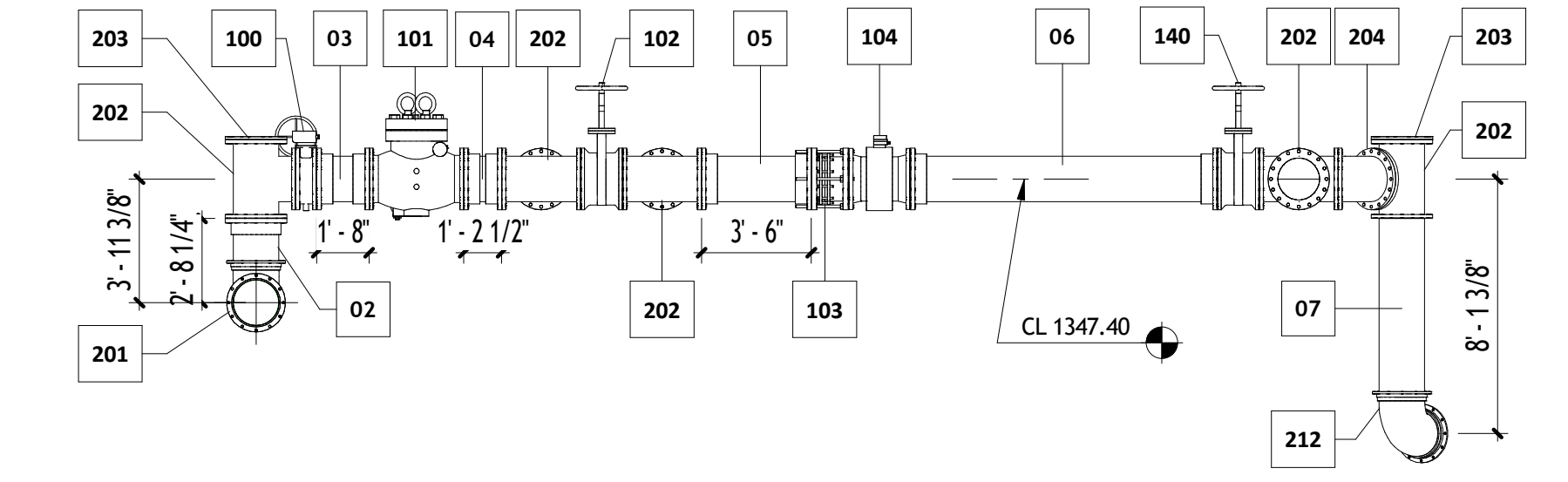
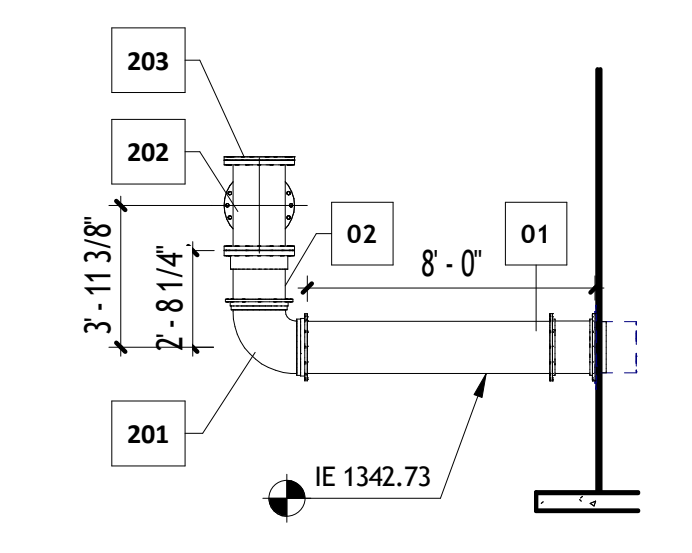
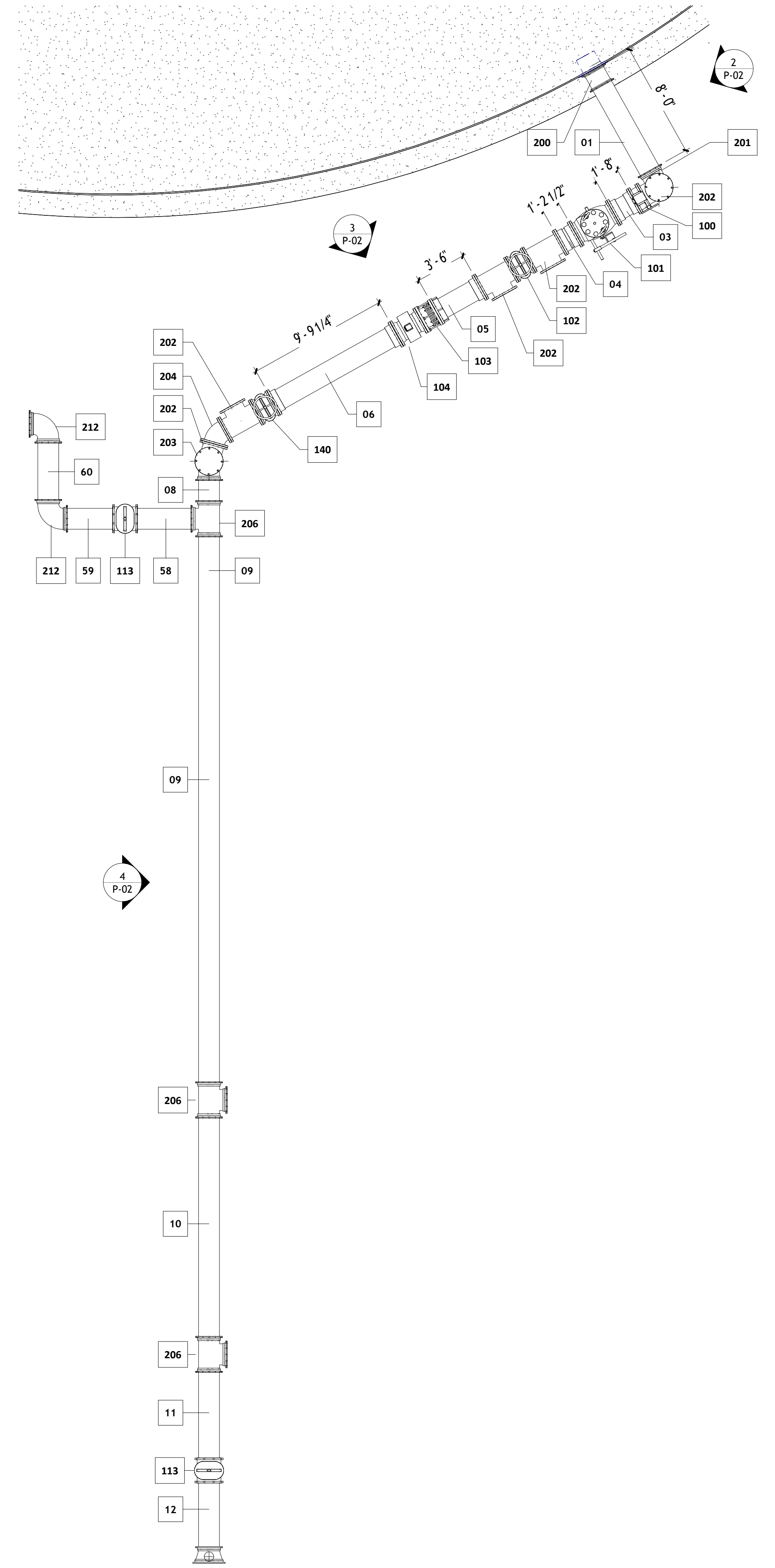


PIPE SCHEDULE						
#	SIZE	DESCRIPTION	LENGTH	QTY	COST/FT	NOTES
01	16"	MJ DI CL150 - FASTITE	7' - 0 1/2"	1	0.00	
02	16"	FL DI CL150 - SPOOL	1' - 7 3/4"	1	0.00	
03	16"	FL DI CL150 - SPOOL	1' - 8"	1	0.00	
04	16"	FL DI CL150 - SPOOL	1' - 2 1/2"	1	0.00	
05	16"	FL DI CL150 - SPOOL	3' - 6 1/8"	1	0.00	
06	16"	FL DI CL150 - SPOOL	9' - 6"	1	0.00	
07	16"	FL DI CL150 - SPOOL	5' - 9 3/4"	1	0.00	
08	16"	MJ DI CL150 - FASTITE	1' - 11 7/8"	1	0.00	
09	16"	MJ DI CL150 - FASTITE	38' - 5 3/8"	1	0.00	
10	16"	MJ DI CL150 - FASTITE	15' - 9"	1	0.00	
11	16"	MJ DI CL150 - FASTITE	6' - 2 3/4"	1	0.00	
12	16"	MJ DI CL150 - FASTITE	4' - 8 1/2"	1	0.00	
58	16"	MJ DI CL150 - FASTITE	4' - 0"	1	0.00	
59	16"	MJ DI CL150 - FASTITE	3' - 5"	1	0.00	
60	16"	MJ DI CL150 - FASTITE	4' - 6"	1	0.00	

PIPE FITTING SCHEDULE						
#	SIZE	DESCRIPTION	MANUFACTURER	QTY	COST/EA	NOTES
200	16" x 16"	MJ/MJ SOLID SLEEVE	STAR PIPE PRODUCTS	1	0.00	
201	16" x 16"	MJ/MJ DI C153 - 90 BEND	STAR PIPE PRODUCTS	1	0.00	
202	16" x 16" x 16"	FL/FL DI C110 - TEE	STAR PIPE PRODUCTS	5	0.00	
203	16"	FL DI C110 - BLIND FLANGE	STAR PIPE PRODUCTS	2	0.00	
204	16" x 16"	FL/FL DI C110 - 45 BEND	STAR PIPE PRODUCTS	1	0.00	
206	16" x 16" x 16"	MJ/MJ DI C153 - TEE	STAR PIPE PRODUCTS	3	0.00	
212	16" x 16"	MJ/MJ DI C153 - 90 BEND	STAR PIPE PRODUCTS	3	0.00	

GASKET SCHEDULE	
TYPE	QTY
1/8" GASKET	20

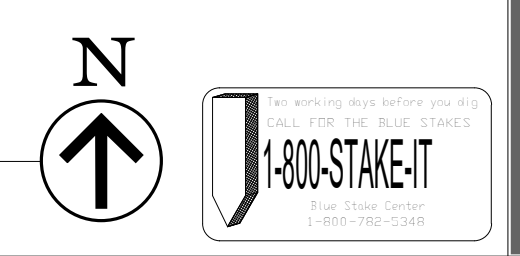
ACCESSORY SCHEDULE					
#	DESCRIPTION	MANUFACTURER	QTY	COST/EA	NOTES
100	16" FL/FL BUTTERFLY VALVE	DEZURIK	1	0.00	
101	24" FL/FL SWING CHECK VALVE	DEZURIK	1	0.00	
102	16" FL/FL GATE VALVE	AMERICAN FLOW CONTROL	1	0.00	
103	16" (MIN) DISMANTLING JOINT DJ400	ROMAC INDUSTRIES, INC.	1	0.00	
104	16" FLOWMETER	ENDRESS + HAUSER	1	0.00	
113	16" MJ/MJ GATE VALVE	AMERICAN FLOW CONTROL	2	0.00	
140	16" FL/FL GATE VALVE	AMERICAN FLOW CONTROL	1	0.00	

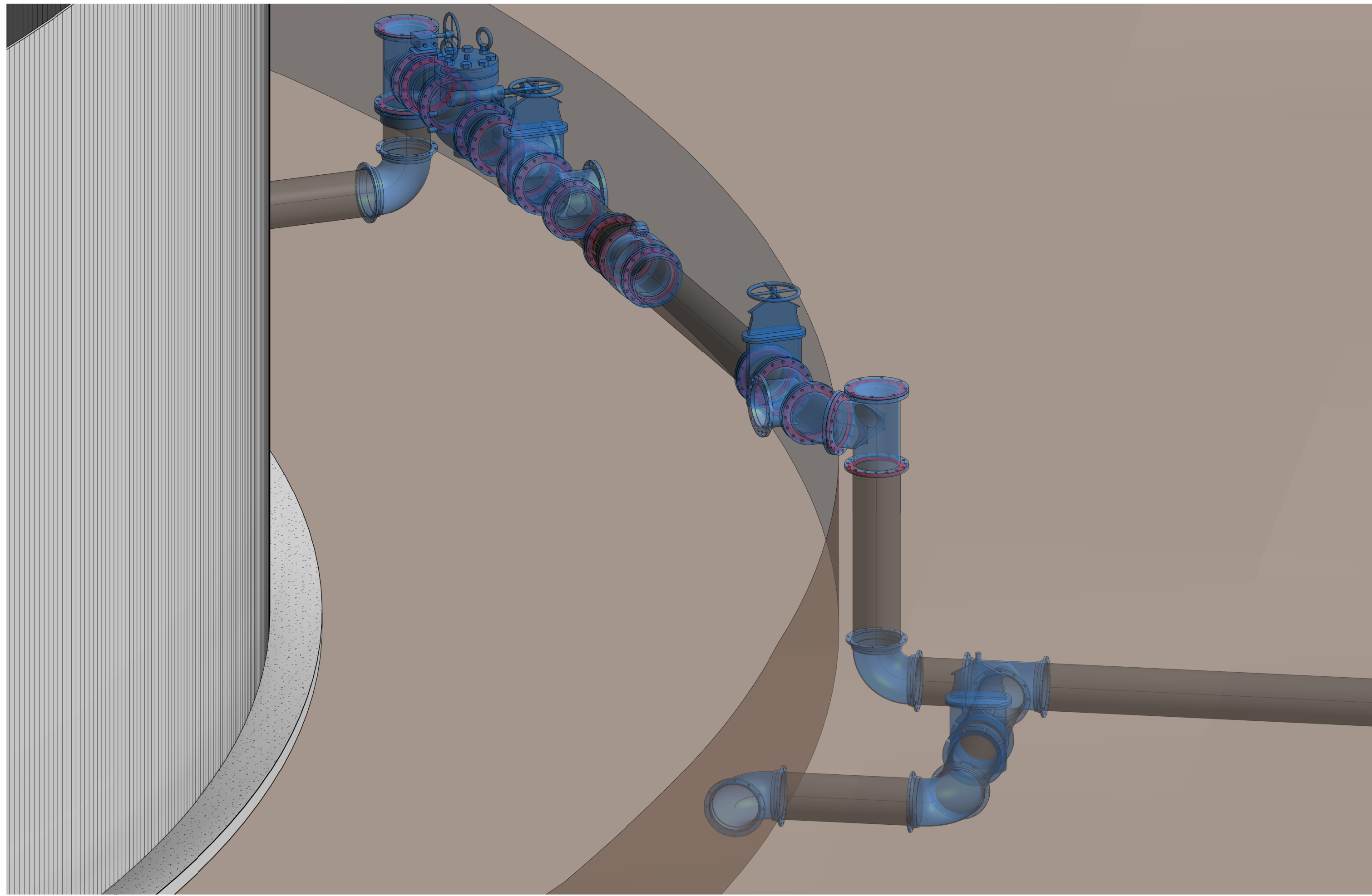


SECTION 3
3/16" = 1'-0"

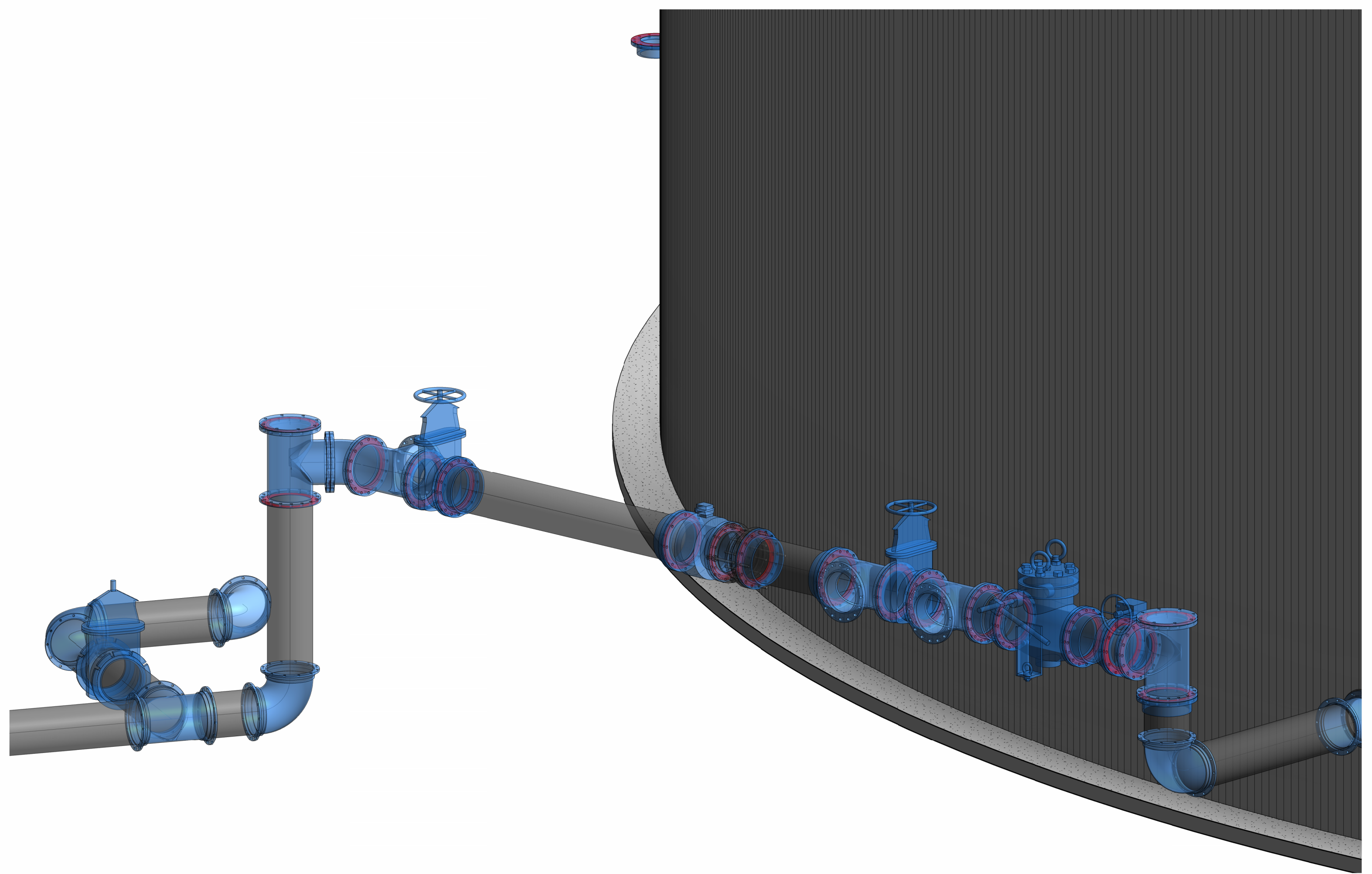
SECTION 2
3/16" = 1'-0"

ENLARGED SITE PLAN 1
3/16" = 1'-0"

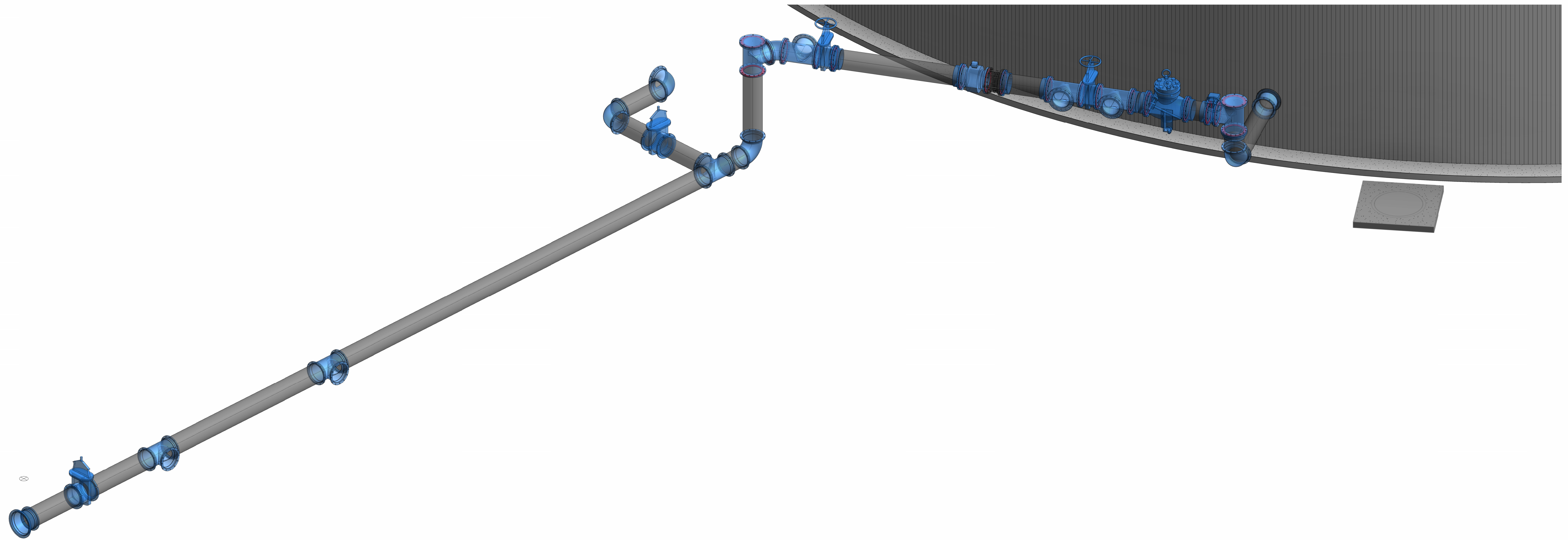




1 3D VIEW



2 3D VIEW



3 3D VIEW

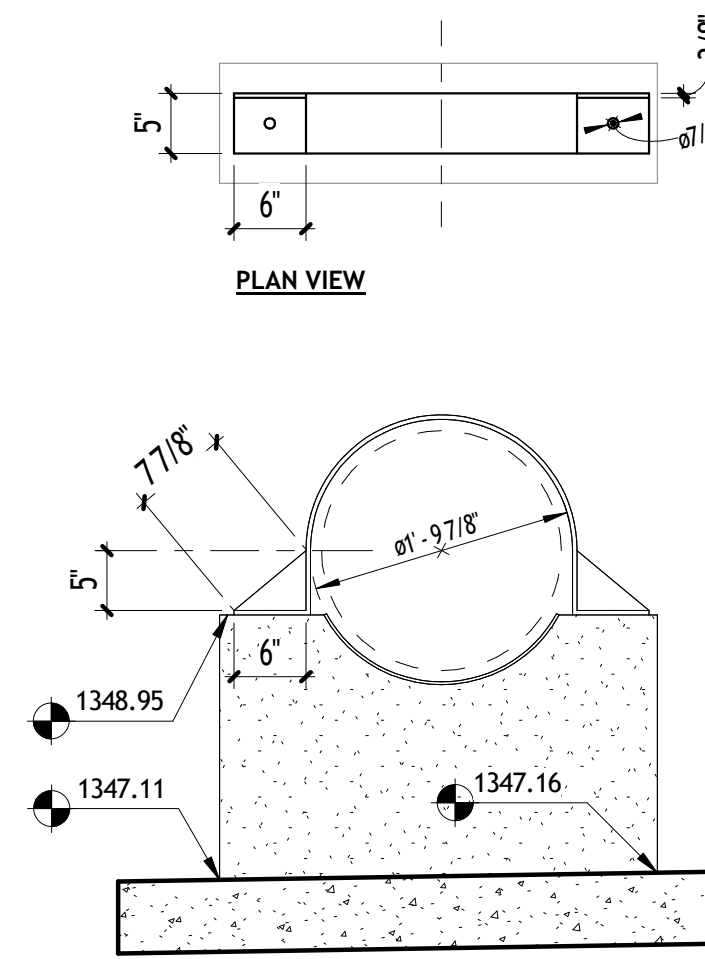
SCALE:

PIPE SCHEDULE						
#	SIZE	DESCRIPTION	LENGTH	QTY	COST/FT	NOTES
13	20"	FL DI CL150 - SPOOL	7' - 1"	1	0.00	
14	20"	FL DI CL150 - SPOOL	5' - 8 7/8"	1	0.00	
15	20"	FL DI CL150 - SPOOL	2' - 2"	1	0.00	
16	20"	FL DI CL150 - SPOOL	3' - 7 3/4"	3	0.00	
17	20"	FL DI CL150 - SPOOL	<varies>	4	0.00	
18	8"	FL DI CL150 - SPOOL	1' - 2 1/2"	1	0.00	
19	8"	FL DI CL150 - SPOOL	0' - 10 7/8"	1	0.00	
20	8"	FL DI CL150 - SPOOL	5' - 2 5/8"	1	0.00	
21	8"	FL DI CL150 - SPOOL	2' - 0 1/2"	1	0.00	
22	8"	FL DI CL150 - SPOOL	3' - 3 1/4"	1	0.00	
23	12"	FL DI CL150 - SPOOL	1' - 10"	6	0.00	
24	12"	FL DI CL150 - SPOOL	4' - 9 3/8"	6	0.00	
25	12"	FL DI CL150 - SPOOL	2' - 9 1/8"	1	0.00	
26	12"	FL DI CL150 - SPOOL	2' - 8 1/4"	1	0.00	
27	12"	FL DI CL150 - SPOOL	3' - 9 7/8"	1	0.00	
28	12"	FL DI CL150 - SPOOL	8' - 1"	1	0.00	
29	12"	MJ DI CL150 - FASTITE	81' - 3 7/8"	1	0.00	
39	8"	FL DI CL150 - SPOOL	8' - 8 5/8"	1	0.00	
45	16"	MJ DI CL150 - FASTITE	6' - 0 5/8"	3	0.00	
52	20"	FL DI CL150 - SPOOL	8' - 0 1/2"	1	0.00	

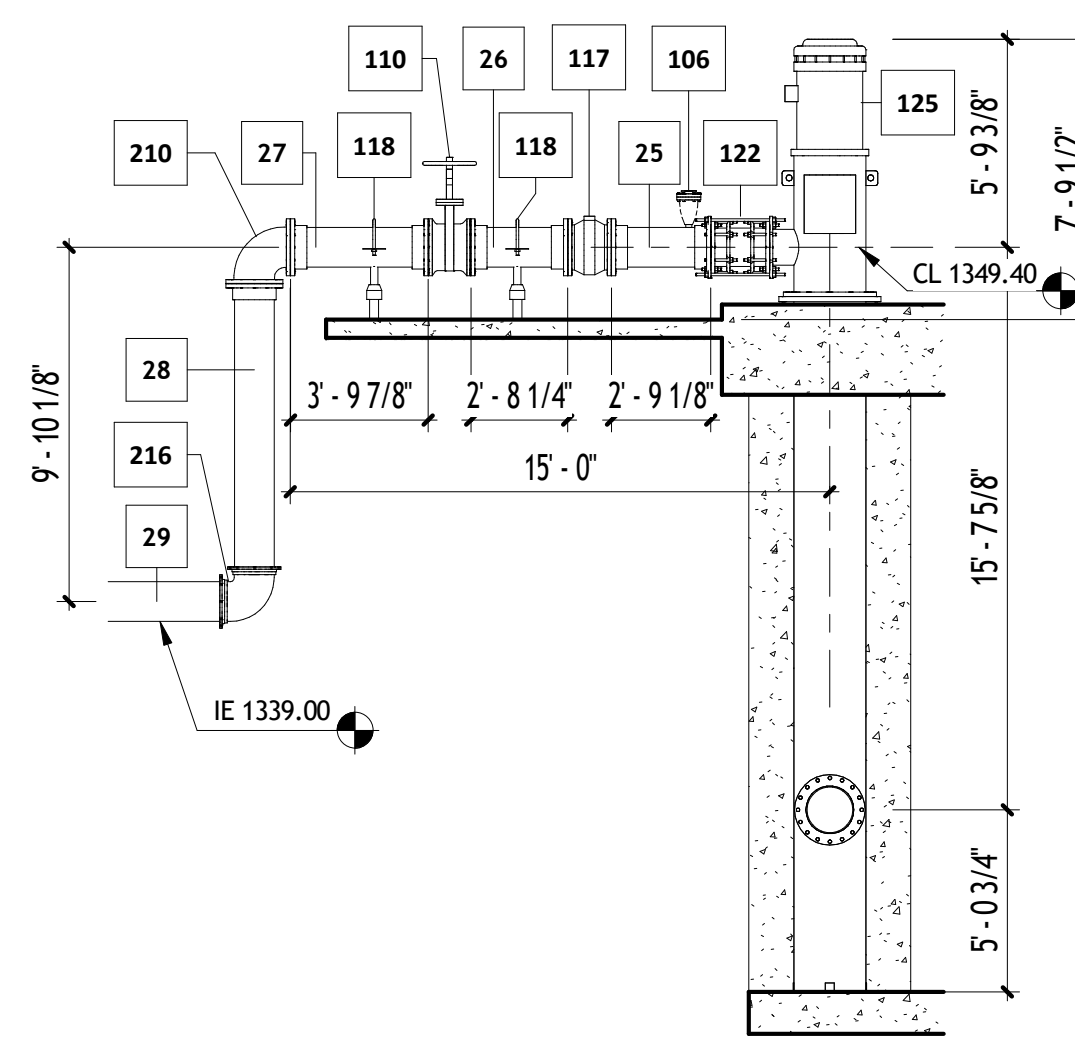
PIPE FITTING SCHEDULE						
#	SIZE	DESCRIPTION	MANUFACTURER	QTY	COST/EA	NOTES
205	20" x 20" x 12"	FL/FL DI C110 - TEE	STAR PIPE PRODUCTS	7	0.00	
207	8" x 8"	FL/FL DI C110 - 90 BEND	STAR PIPE PRODUCTS	2	0.00	
209	8" x 8" x 2"	TAPPED S/S SADDLE	THE FORD METER BOX COMPANY, INC.	1	0.00	
210	12" x 12"	FL/FL DI C110 - 90 BEND	STAR PIPE PRODUCTS	1	0.00	
211	12" x 8"	FL/FL DI C110 - CONCENTRIC REDUCER	STAR PIPE PRODUCTS	1	0.00	
213	22" x 20"	FL/FL DI C110 - CONCENTRIC REDUCER	STAR PIPE PRODUCTS	1	0.00	
214	20"	FL DI C110 - BLIND FLANGE	STAR PIPE PRODUCTS	1	0.00	
215	20" x 20" x 2"	TAPPED S/S SADDLE	THE FORD METER BOX COMPANY, INC.	1	0.00	
216	12" x 12"	MJ/MJ DI C153 - 90 BEND	STAR PIPE PRODUCTS	1	0.00	
225	20" x 20"	FL/FL DI C110 - 90 BEND	STAR PIPE PRODUCTS	1	0.00	

ACCESSORY SCHEDULE					
#	DESCRIPTION	MANUFACTURER	QTY	COST/EA	NOTES
105	20" FL/FL GATE VALVE	AMERICAN FLOW CONTROL	1	0.00	
106	2" AVC-SINGLE COMBINATION AIR VALVE	DEZURIK	8	0.00	
108	20" FLOWMETER	Endress + Hauser	1	0.00	
110	12" FL/FL GATE VALVE	AMERICAN FLOW CONTROL	8	0.00	
112	8" FL/FL PRESSURE REDUCING VALVE	CLA-VAL	1	0.00	
114	8" HDG ADJUSTABLE SADDLE SUPPORT W/ U-BOLT	PIPELINE PRODUCTS	2	0.00	
115	8" FL/FL CHECK VALVE - GLOBE	DEZURIK	1	0.00	
116	8" FL/FL GATE VALVE	AMERICAN FLOW CONTROL	1	0.00	
117	12" FL/FL CHECK VALVE - GLOBE	DEZURIK	7	0.00	
118	12" HDG ADJUSTABLE SADDLE SUPPORT W/ U-BOLT	PIPELINE PRODUCTS	14	0.00	
120	2" ARV MODEL 200A	DEZURIK	2	0.00	
121	<varies>	ROMAC INDUSTRIES, INC.	3	0.00	
122	12" (NOM.) ECF FITTING	ROMAC INDUSTRIES, INC.	7	0.00	
123	8" (NOM.) DISMANTLING JOINT	ROMAC INDUSTRIES, INC.	1	0.00	
125	RECIRC CAN AND 90 W/MOTOR	FLOWSERVE	1	0.00	
126	BOOSTER PUMP	FLOWSERVE	6	0.00	

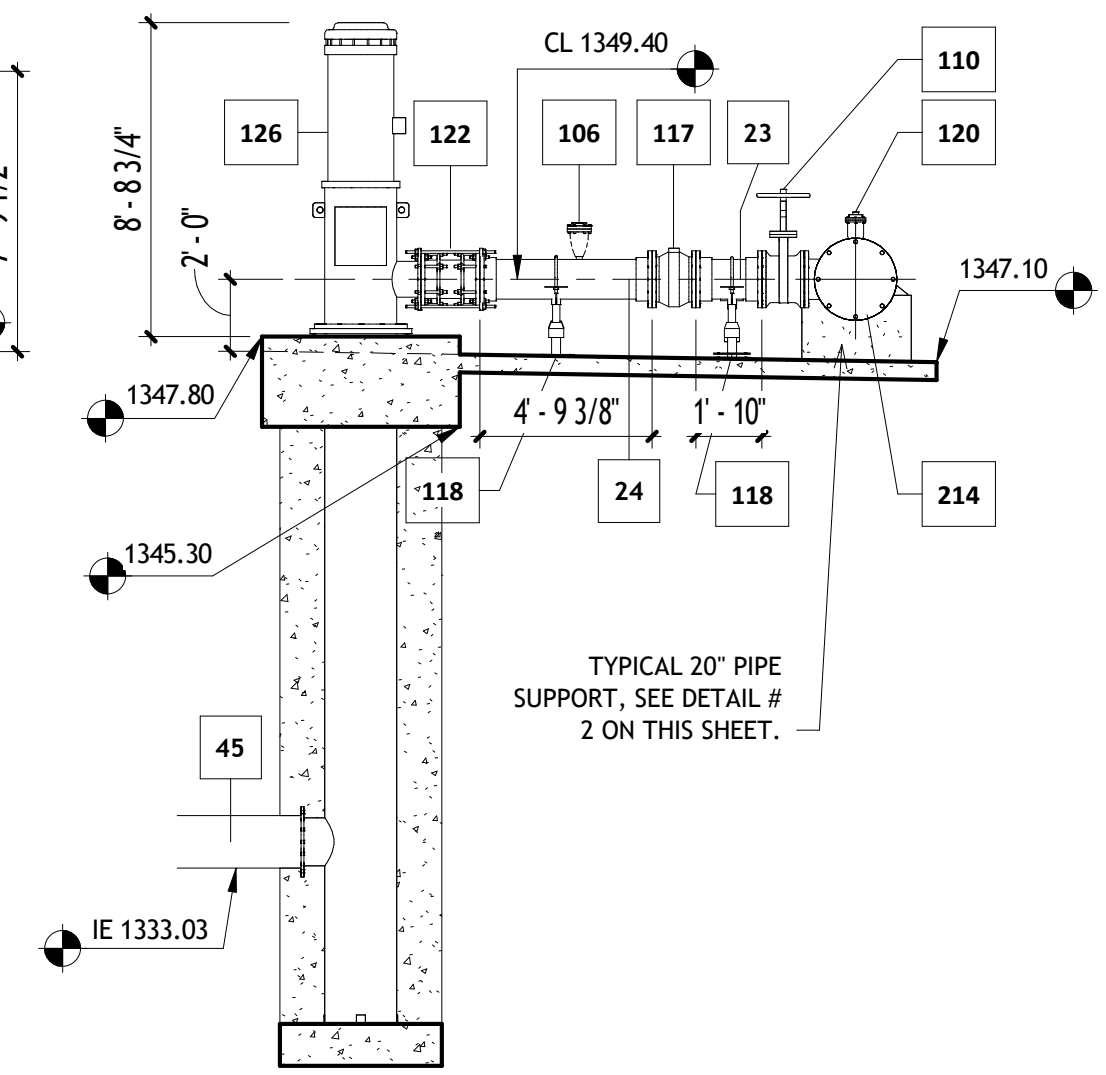
GASKET SCHEDULE	
TYPE	QTY
1/8" GASKET	81



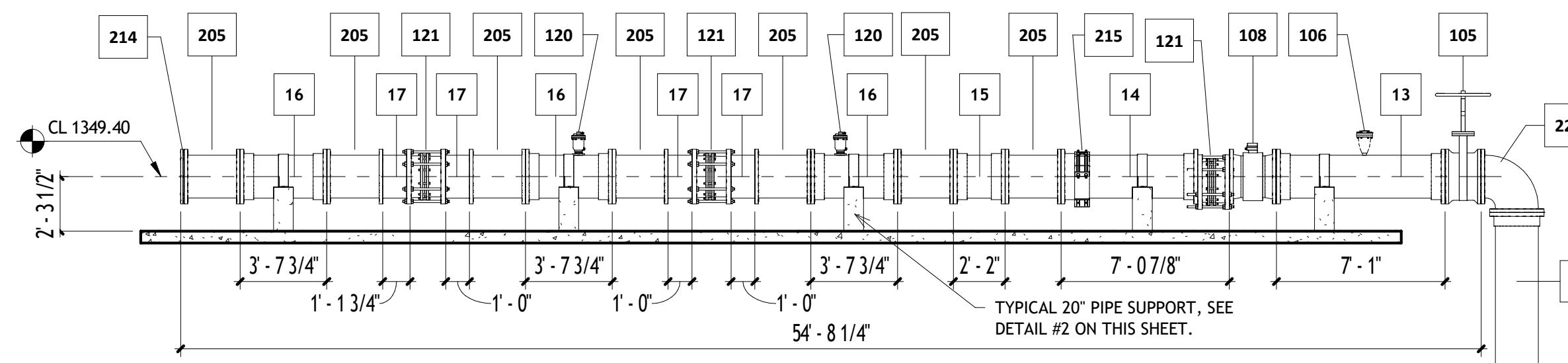
2 20" PIPE SUPPORT STRAP
3/4" = 1'-0"



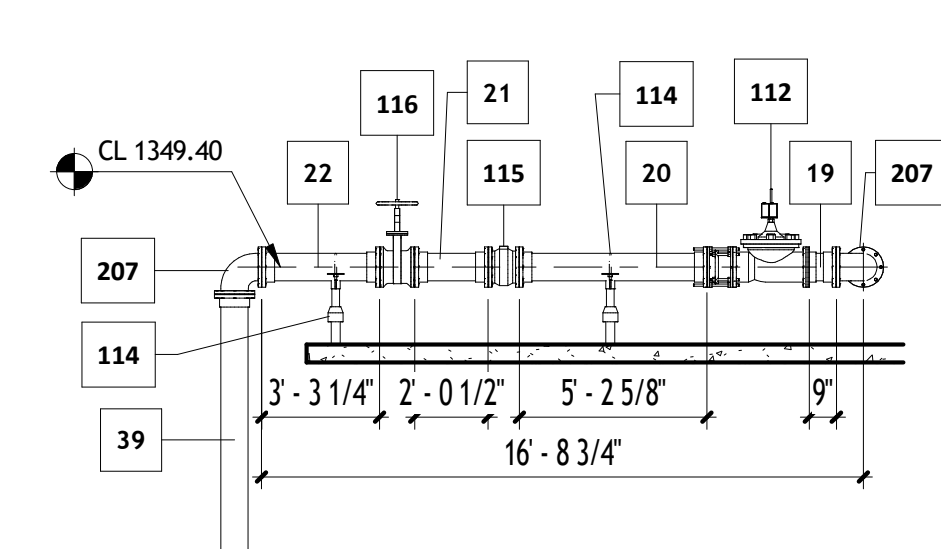
3 SECTION
3/16" = 1'-0"



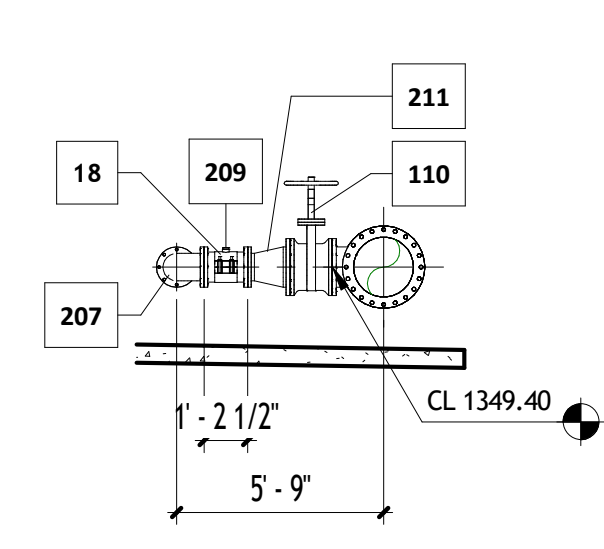
4 SECTION
3/16" = 1'-0"



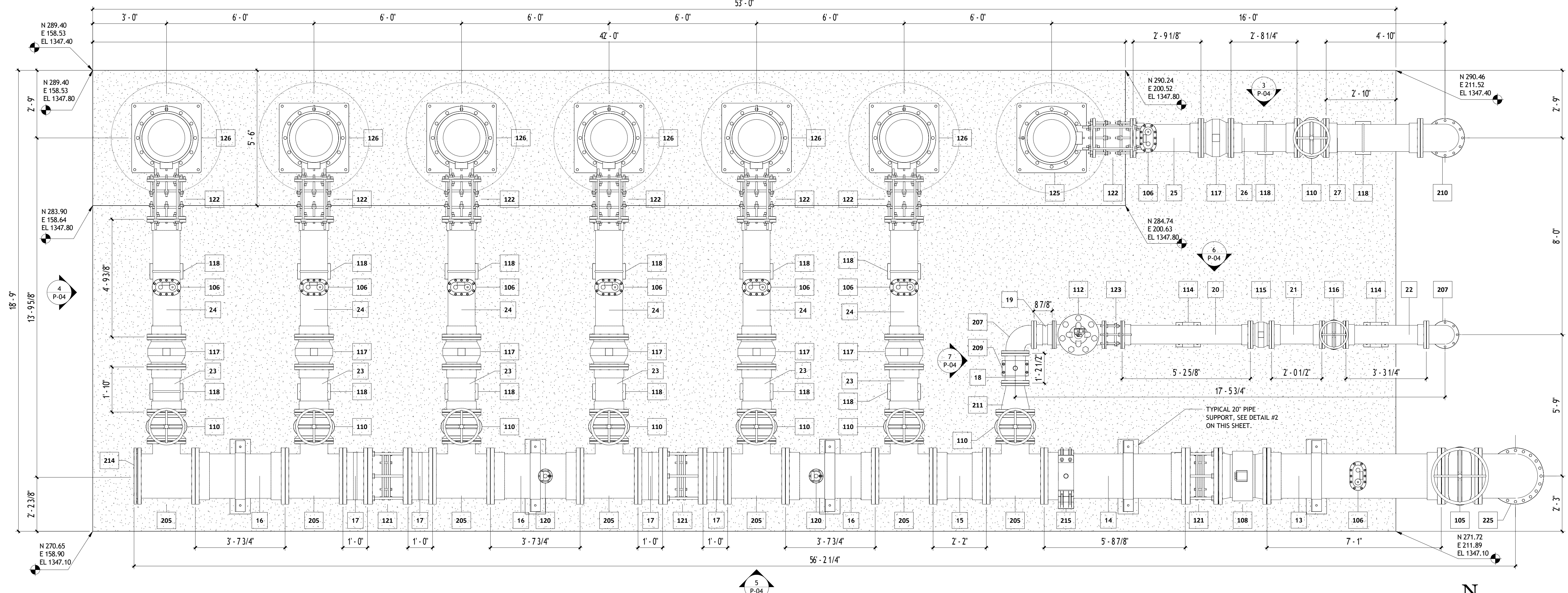
5 SECTION
3/16" = 1'-0"



6 SECTION
3/16" = 1'-0"



7 SECTION
3/16" = 1'-0"



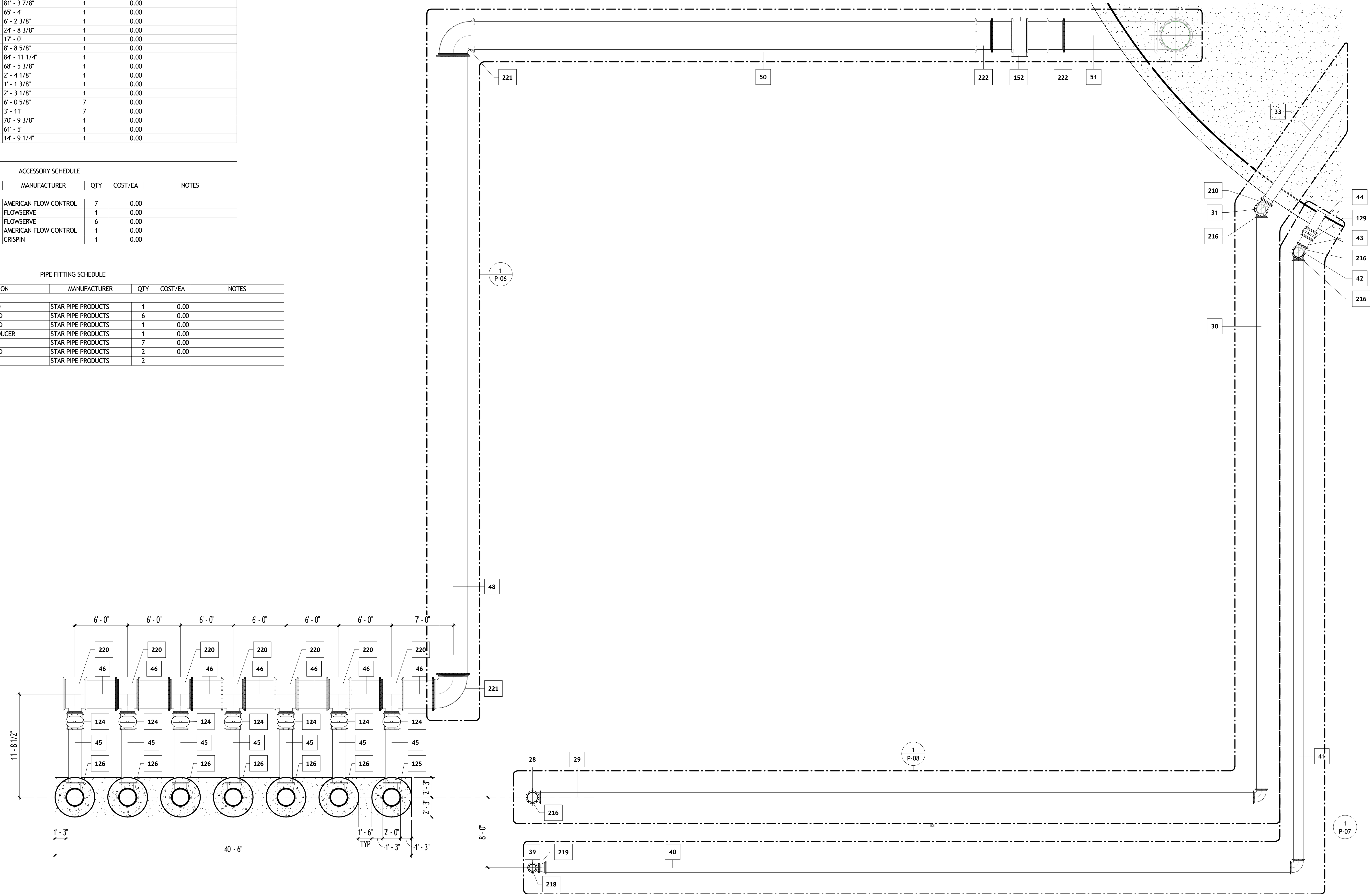
1 ENLARGED SITE PLAN 2
1/2" = 1'-0"

PIPE SCHEDULE						
#	SIZE	DESCRIPTION	LENGTH	QTY	COST/FT	NOTES
28	12"ø	FL DI CL150 - SPOOL	8' - 1"	1	0.00	
29	12"ø	MJ DI CL150 - FASTITE	81' - 3 7/8"	1	0.00	
30	12"ø	MJ DI CL150 - FASTITE	65' - 4"	1	0.00	
31	12"ø	FL DI CL150 - SPOOL	6' - 2 3/8"	1	0.00	
32	12"ø	FL DI CL150 - SPOOL	24' - 8 3/8"	1	0.00	
33	12"ø	FL DI CL150 - SPOOL	17' - 0"	1	0.00	
39	8"ø	FL DI CL150 - SPOOL	8' - 8 5/8"	1	0.00	
40	12"ø	MJ DI CL150 - FASTITE	84' - 11 1/4"	1	0.00	
41	12"ø	MJ DI CL150 - FASTITE	68' - 5 3/8"	1	0.00	
42	12"ø	MJ DI CL150 - FASTITE	2' - 4 1/8"	1	0.00	
43	12"ø	MJ DI CL150 - FASTITE	1' - 1 3/8"	1	0.00	
44	12"ø	MJ DI CL150 - FASTITE	2' - 3 1/8"	1	0.00	
45	16"ø	MJ DI CL150 - FASTITE	6' - 0 5/8"	7	0.00	
46	36"ø	MJ DI CL150 - FASTITE	3' - 11"	7	0.00	
48	36"ø	MJ DI CL150 - FASTITE	70' - 9 3/8"	1	0.00	
50	36"ø	MJ DI CL150 - FASTITE	61' - 5"	1	0.00	
51	36"ø	MJ DI CL150 - FASTITE	14' - 9 1/4"	1	0.00	

ACCESSORY SCHEDULE					
#	DESCRIPTION	MANUFACTURER	QTY	COST/EA	NOTES
124	16" MJ/MJ GATE VALVE	AMERICAN FLOW CONTROL	7	0.00	
125	RECIRC CAN AND 90 W/MOTOR	FLOWSERVE	1	0.00	
126	BOOSTER PUMP	FLOWSERVE	6	0.00	
129	12" MJ/MJ GATE VALVE	AMERICAN FLOW CONTROL	1	0.00	
152	36" MJ/MJ BUTTERFLY VALVE	CRISPIN	1	0.00	

PIPE FITTING SCHEDULE						
#	SIZE	DESCRIPTION	MANUFACTURER	QTY	COST/EA	NOTES
210	12"ø-12"ø	FL/FL DI C110 - 90 BEND	STAR PIPE PRODUCTS	1	0.00	
216	12"ø-12"ø	MJ/MJ DI C153 - 90 BEND	STAR PIPE PRODUCTS	6	0.00	
218	8"ø-8"ø	MJ/MJ DI C153 - 90 BEND	STAR PIPE PRODUCTS	1	0.00	
219	12"ø-8"ø	MJ/MJ CONCENTRIC REDUCER	STAR PIPE PRODUCTS	1	0.00	
220	36"ø-36"ø-16"ø	MJ/MJ DI C153 - TEE	STAR PIPE PRODUCTS	7	0.00	
221	36"ø-36"ø	MJ/MJ DI C153 - 90 BEND	STAR PIPE PRODUCTS	2	0.00	
222	36"ø-36"ø	MJ/MJ SOLID SLEEVE	STAR PIPE PRODUCTS	2	0.00	

GASKET SCHEDULE		
TYPE	QTY	
1/8" GASKET	3	



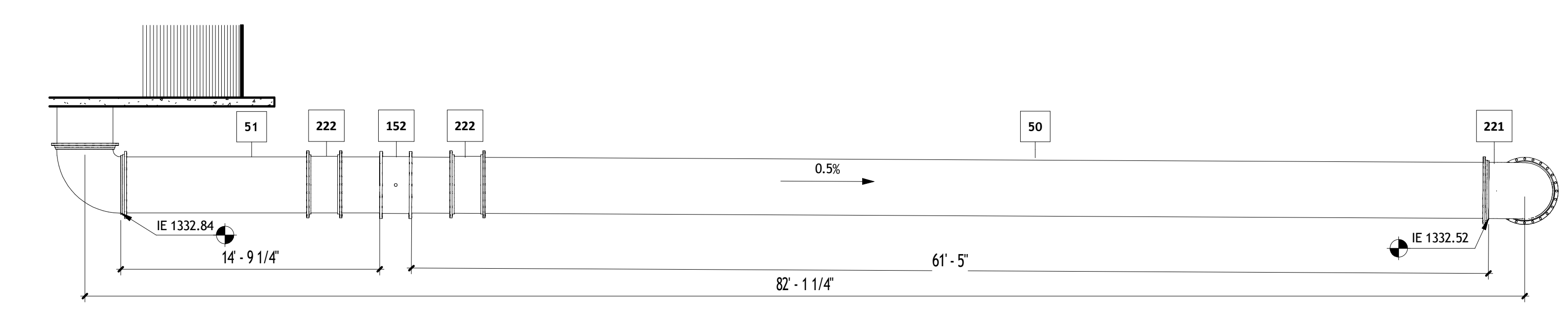
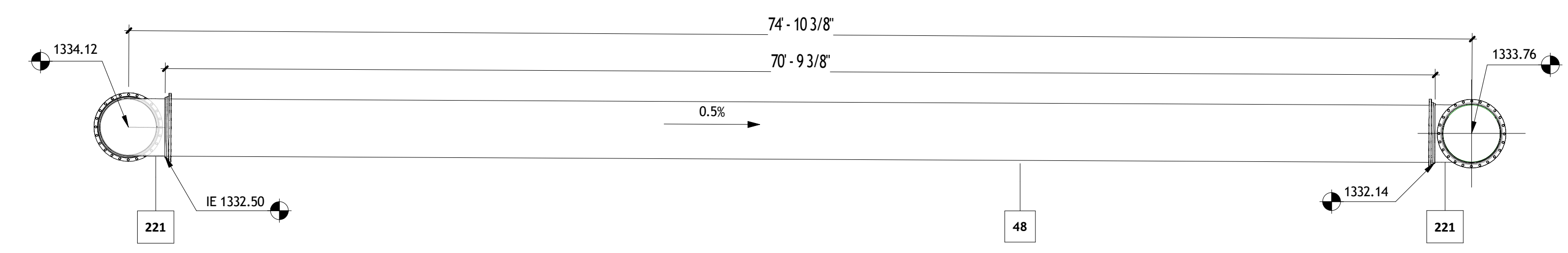
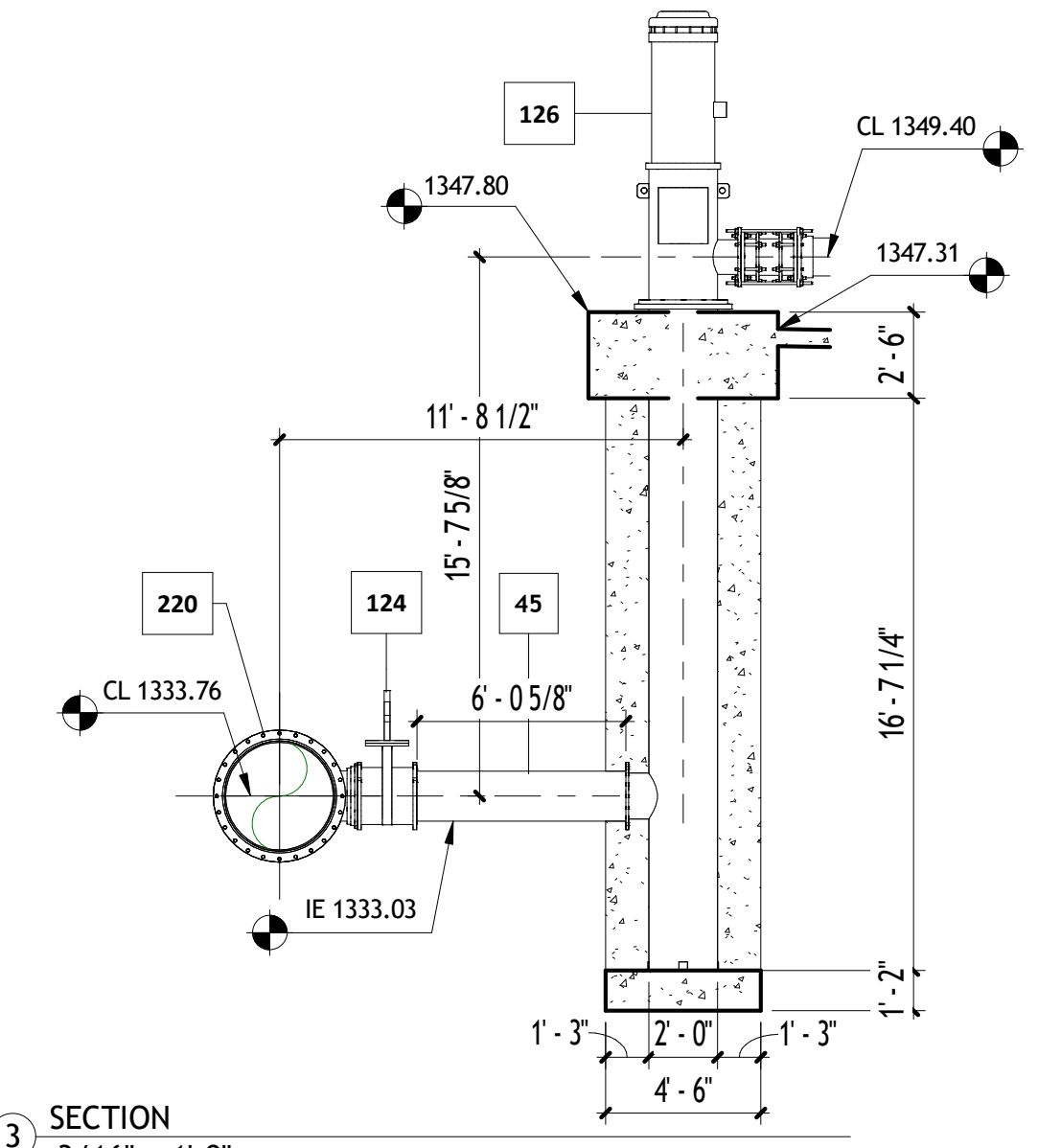
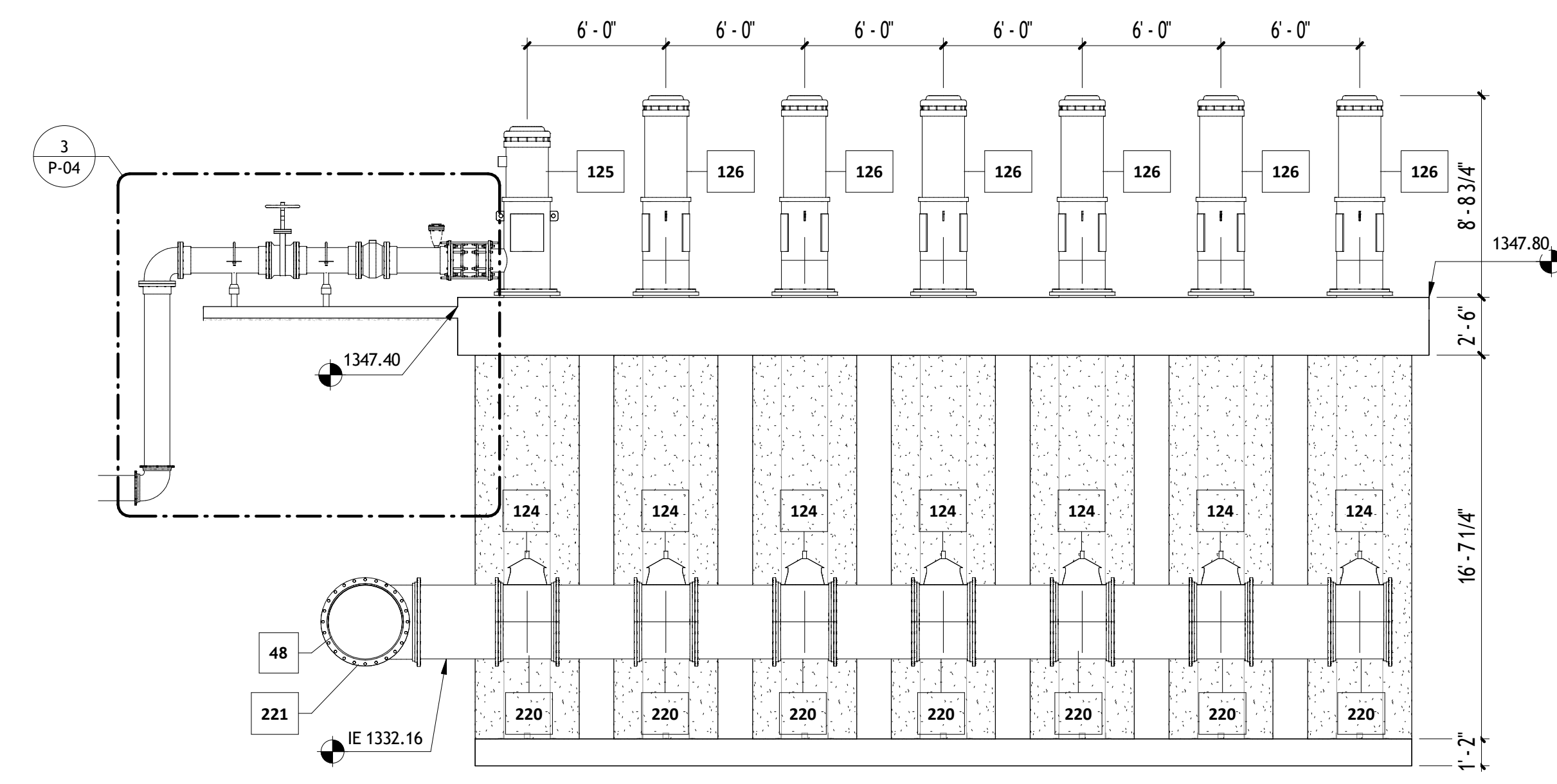
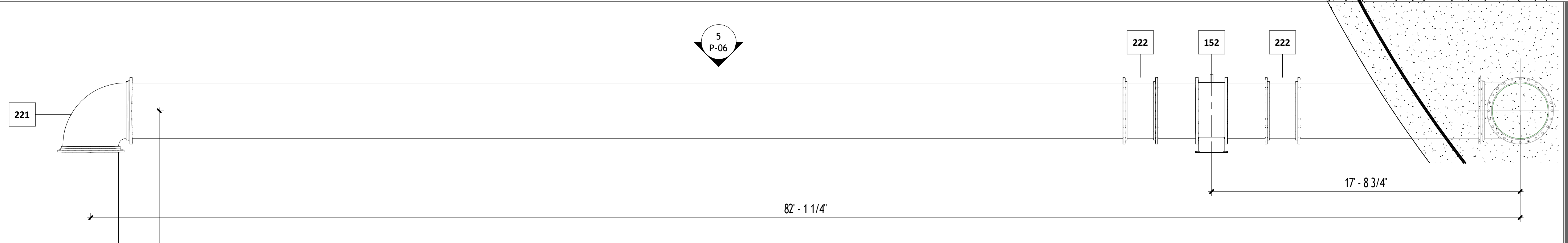
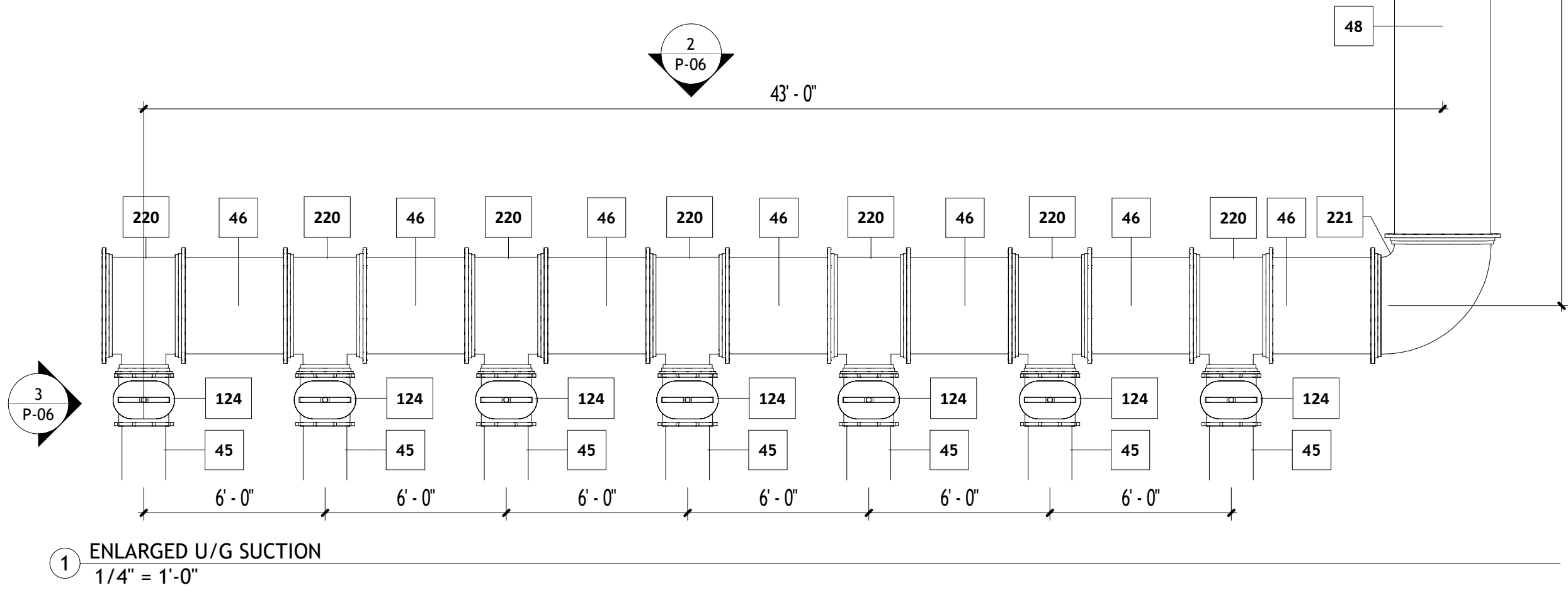
1 ENLARGED U/G PUMP STATION
3/16" = 1'-0"

PIPE SCHEDULE						
#	SIZE	DESCRIPTION	LENGTH	QTY	COST/FT	NOTES
24	12"ø	FL DI CL150 - SPOOL	4' - 9 3/8"	6	0.00	
25	12"ø	FL DI CL150 - SPOOL	2' - 9 1/8"	1	0.00	
26	12"ø	FL DI CL150 - SPOOL	2' - 8 1/4"	1	0.00	
27	12"ø	FL DI CL150 - SPOOL	3' - 9 7/8"	1	0.00	
28	12"ø	FL DI CL150 - SPOOL	8' - 1"	1	0.00	
29	12"ø	MJ DI CL150 - FASTITTE	81' - 3 7/8"	1	0.00	
45	16"ø	MJ DI CL150 - FASTITTE	6' - 0 5/8"	7	0.00	
46	36"ø	MJ DI CL150 - FASTITTE	3' - 11"	7	0.00	
48	36"ø	MJ DI CL150 - FASTITTE	70' - 9 3/8"	1	0.00	
50	36"ø	MJ DI CL150 - FASTITTE	61' - 5"	1	0.00	
51	36"ø	MJ DI CL150 - FASTITTE	14' - 9 1/4"	1	0.00	

ACCESSORY SCHEDULE						
#	DESCRIPTION	MANUFACTURER	QTY	COST/EA	NOTES	
106	12" AVC-SINGLE COMBINATION AIR VALVE	DEZURIK	1	0.00		
110	12" FL/FL GATE VALVE	AMERICAN FLOW CONTROL	1	0.00		
117	12" FL/FL CHECK VALVE - GLOBE	DEZURIK	1	0.00		
118	12" HDG ADJUSTABLE SADDLE SUPPORT W/ U-BOLT	PIPELINE PRODUCTS	2	0.00		
122	12" (NOM.) ECF FITTING	ROMAC INDUSTRIES, INC.	7	0.00		
124	16" MJ/MJ GATE VALVE	AMERICAN FLOW CONTROL	7	0.00		
125	RECIRC CAN AND 90 W/MOTOR	FLOWSERVE	1	0.00		
126	BOOSTER PUMP	FLOWSERVE	6	0.00		
152	36" MJ/MJ BUTTERFLY VALVE	CRISPIN	1	0.00		

PIPE FITTING SCHEDULE						
#	SIZE	DESCRIPTION	MANUFACTURER	QTY	COST/EA	NOTES
210	12"ø-12"ø	FL/FL DI C110 - 90 BEND	STAR PIPE PRODUCTS	1	0.00	
216	12"ø-12"ø	MJ/MJ DI C153 - 90 BEND	STAR PIPE PRODUCTS	1	0.00	
220	36"ø-36"ø-16"ø	MJ/MJ DI C153 - TEE	STAR PIPE PRODUCTS	7	0.00	
221	36"ø-36"ø	MJ/MJ DI C153 - 90 BEND	STAR PIPE PRODUCTS	2	0.00	
222	36"ø-36"ø	MJ/MJ SOLID SLEEVE	STAR PIPE PRODUCTS	2	0.00	

GASKET SCHEDULE		
TYPE	QTY	
1/8" GASKET	19	

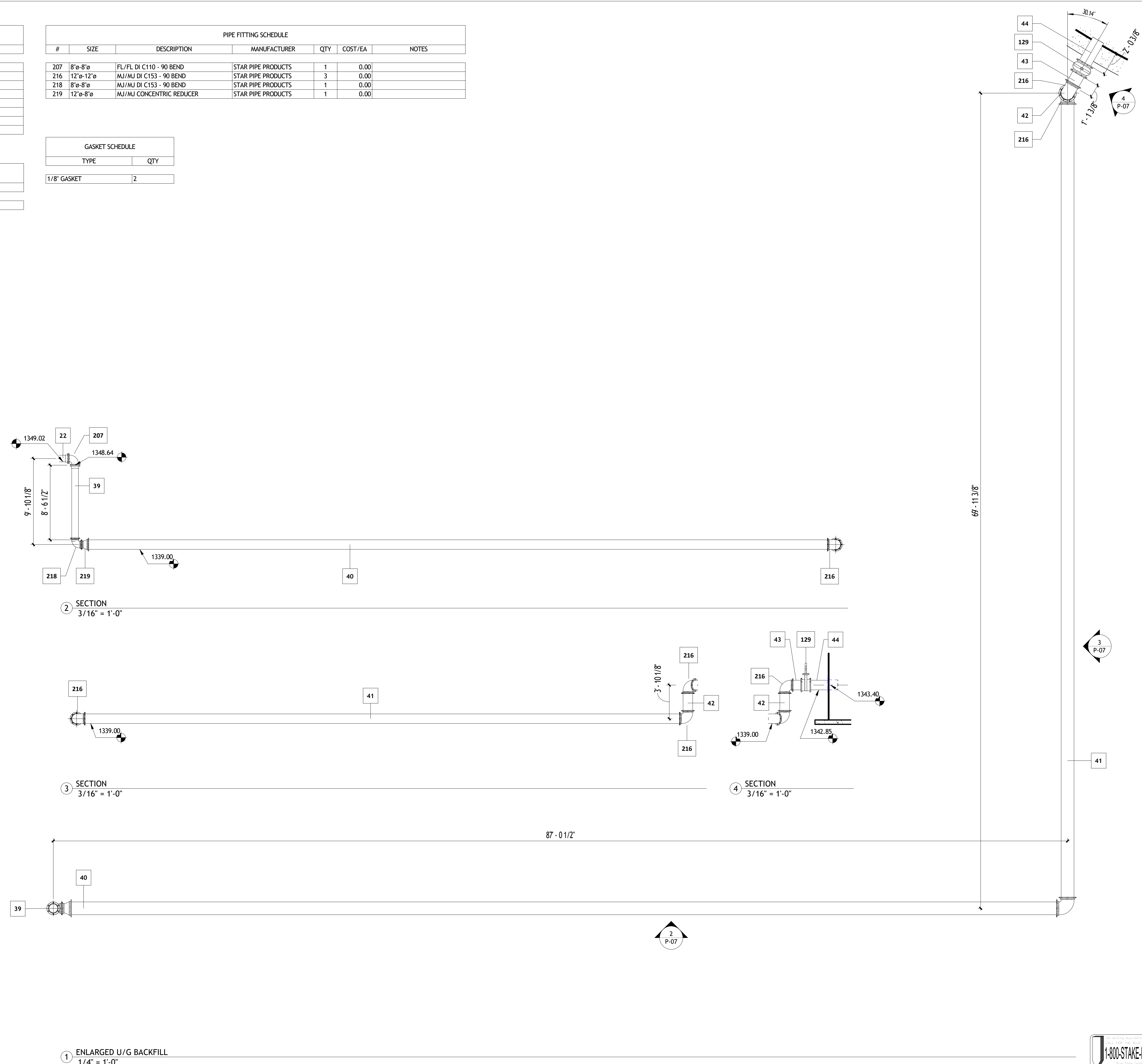


PIPE SCHEDULE						
#	SIZE	DESCRIPTION	LENGTH	QTY	COST/FT	NOTES
22	8"ø	FL DI CL150 - SPOOL	3' - 3 1/4"	1	0.00	
30	12"ø	MJ DI CL150 - FASTITE	65' - 4"	1	0.00	
39	8"ø	FL DI CL150 - SPOOL	8' - 8 5/8"	1	0.00	
40	12"ø	MJ DI CL150 - FASTITE	84' - 11 1/4"	1	0.00	
41	12"ø	MJ DI CL150 - FASTITE	68' - 5 3/8"	1	0.00	
42	12"ø	MJ DI CL150 - FASTITE	2' - 4 1/8"	1	0.00	
43	12"ø	MJ DI CL150 - FASTITE	1' - 1 3/8"	1	0.00	
44	12"ø	MJ DI CL150 - FASTITE	2' - 3 1/8"	1	0.00	

PIPE FITTING SCHEDULE						
#	SIZE	DESCRIPTION	MANUFACTURER	QTY	COST/EA	NOTES
207	8"ø-8"ø	FL/FL DI C110 - 90 BEND	STAR PIPE PRODUCTS	1	0.00	
216	12"ø-12"ø	MJ/MJ DI C153 - 90 BEND	STAR PIPE PRODUCTS	3	0.00	
218	8"ø-8"ø	MJ/MJ DI C153 - 90 BEND	STAR PIPE PRODUCTS	1	0.00	
219	12"ø-8"ø	MJ/MJ CONCENTRIC REDUCER	STAR PIPE PRODUCTS	1	0.00	

GASKET SCHEDULE	
TYPE	QTY
1/8" GASKET	2

ACCESSORY SCHEDULE					
#	DESCRIPTION	MANUFACTURER	QTY	COST/EA	NOTES
129	12" MJ/MJ GATE VALVE	AMERICAN FLOW CONTROL	1	0.00	



SCALE:

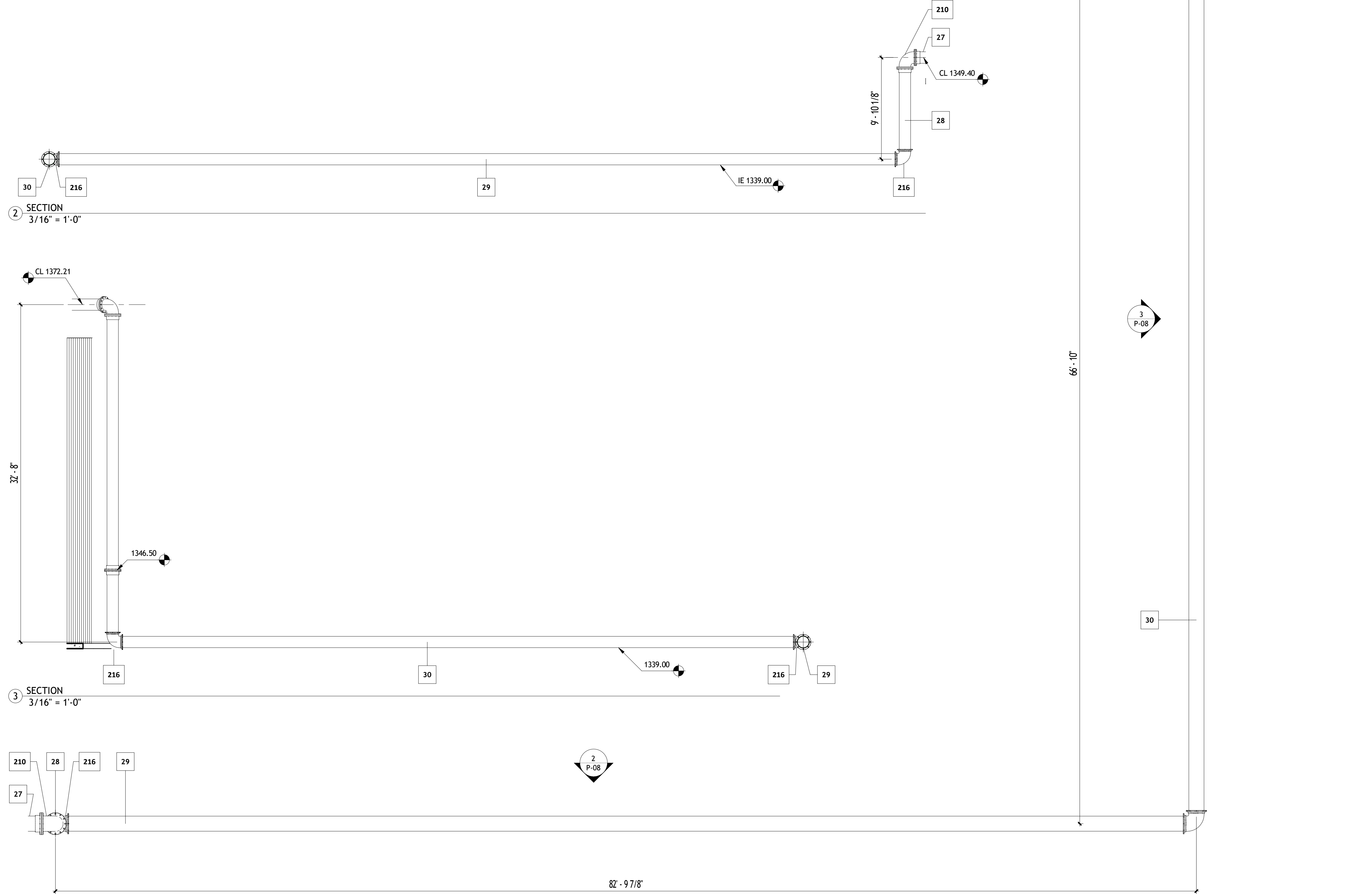


PIPE SCHEDULE						
#	SIZE	DESCRIPTION	LENGTH	QTY	COST/FT	NOTES
27	12" ø	FL DI CL150 - SPOOL	3' - 9 7/8"	1	0.00	
28	12" ø	FL DI CL150 - SPOOL	8' - 1"	1	0.00	
29	12" ø	MJ DI CL150 - FASTITE	81' - 3 7/8"	1	0.00	
30	12" ø	MJ DI CL150 - FASTITE	65' - 4"	1	0.00	
31	12" ø	FL DI CL150 - SPOOL	6' - 2 3/8"	1	0.00	
32	12" ø	FL DI CL150 - SPOOL	24' - 8 3/8"	1	0.00	
33	12" ø	FL DI CL150 - SPOOL	17' - 0"	1	0.00	

PIPE FITTING SCHEDULE						
#	SIZE	DESCRIPTION	MANUFACTURER	QTY	COST/EA	NOTES
210	12" ø-12" ø	FL/FL DI C110 - 90 BEND	STAR PIPE PRODUCTS	2	0.00	
216	12" ø-12" ø	MJ/MJ DI C153 - 90 BEND	STAR PIPE PRODUCTS	3	0.00	

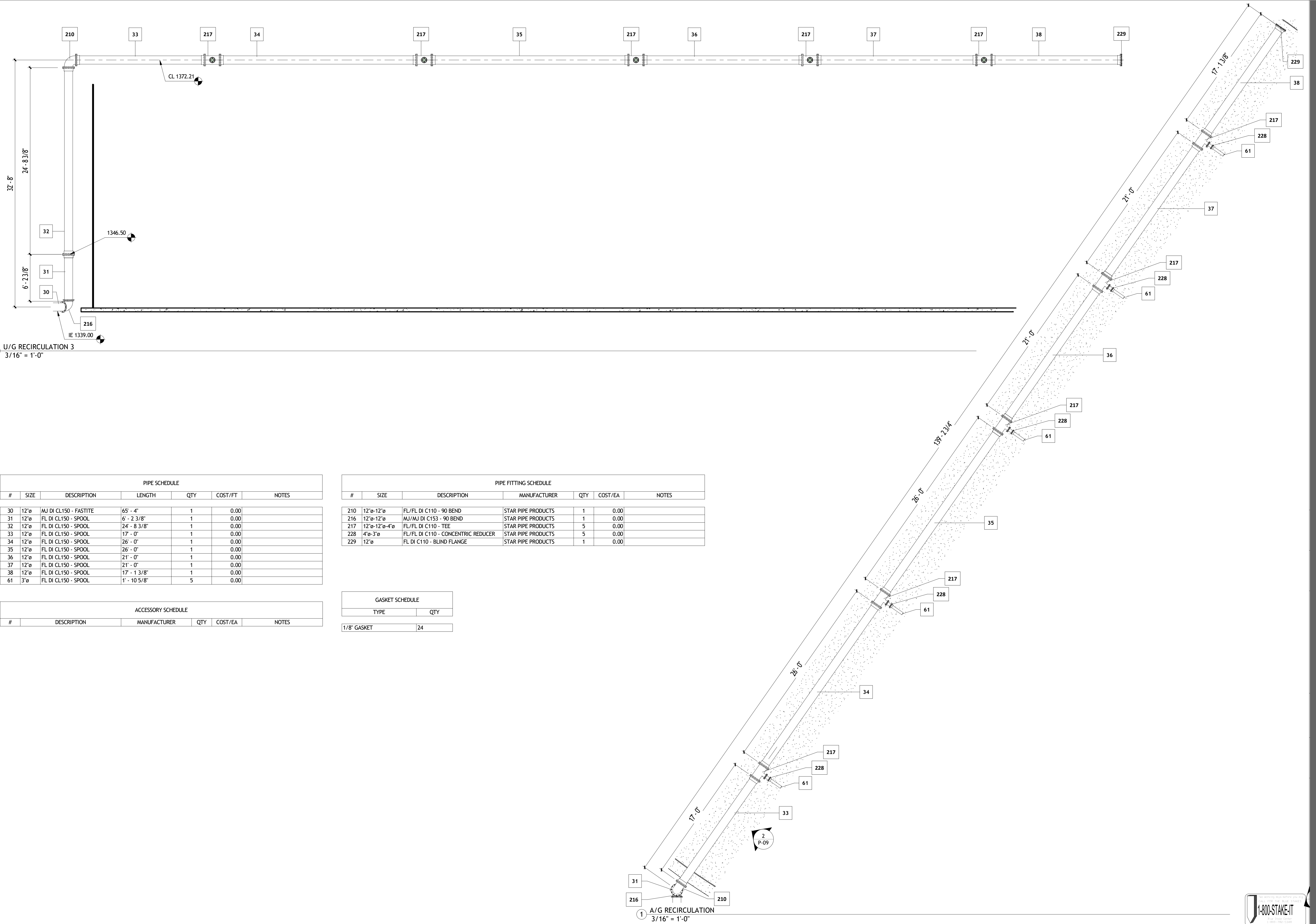
GASKET SCHEDULE	
TYPE	QTY
1/8" GASKET	5

ACCESSORY SCHEDULE					
#	DESCRIPTION	MANUFACTURER	QTY	COST/EA	NOTES



SEE CONTINUATION OF PLAN, NEXT SHEET

1 ENLARGED U/G RECIRCULATION
1/4" = 1'-0"



② U/G RECIRCULATION 3
3/16" = 1'-0"

① A/G RECIRCULATION
3/16" = 1'-0"

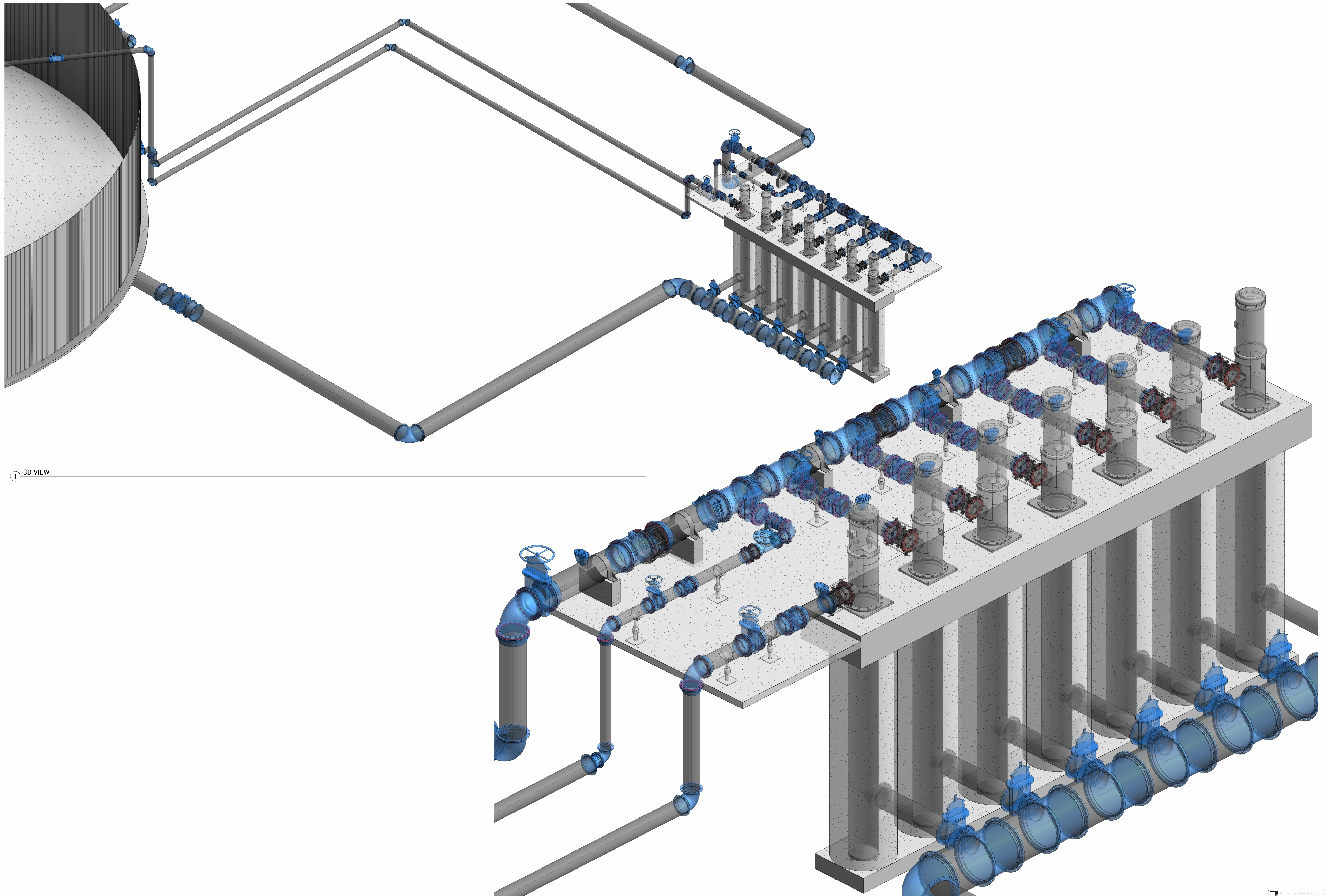
PIPE SCHEDULE						
#	SIZE	DESCRIPTION	LENGTH	QTY	COST/FT	NOTES
30	12"	MJ DI CL150 - FASTITE	65' - 4"	1	0.00	
31	12"	FL DI CL150 - SPOOL	6' - 2 3/8"	1	0.00	
32	12"	FL DI CL150 - SPOOL	24' - 8 3/8"	1	0.00	
33	12"	FL DI CL150 - SPOOL	17' - 0"	1	0.00	
34	12"	FL DI CL150 - SPOOL	26' - 0"	1	0.00	
35	12"	FL DI CL150 - SPOOL	26' - 0"	1	0.00	
36	12"	FL DI CL150 - SPOOL	21' - 0"	1	0.00	
37	12"	FL DI CL150 - SPOOL	21' - 0"	1	0.00	
38	12"	FL DI CL150 - SPOOL	17' - 1 3/8"	1	0.00	
61	3"	FL DI CL150 - SPOOL	1' - 10 5/8"	5	0.00	

PIPE FITTING SCHEDULE						
#	SIZE	DESCRIPTION	MANUFACTURER	QTY	COST/EA	NOTES
210	12" x 12"	FL/FL DI C110 - 90 BEND	STAR PIPE PRODUCTS	1	0.00	
216	12" x 12"	MJ/MJ DI C153 - 90 BEND	STAR PIPE PRODUCTS	1	0.00	
217	12" x 12" x 4"	FL/FL DI C110 - TEE	STAR PIPE PRODUCTS	5	0.00	
228	4" x 3"	FL/FL DI C110 - CONCENTRIC REDUCER	STAR PIPE PRODUCTS	5	0.00	
229	12"	FL DI C110 - BLIND FLANGE	STAR PIPE PRODUCTS	1	0.00	

GASKET SCHEDULE		
TYPE	QTY	
1/8" GASKET	24	

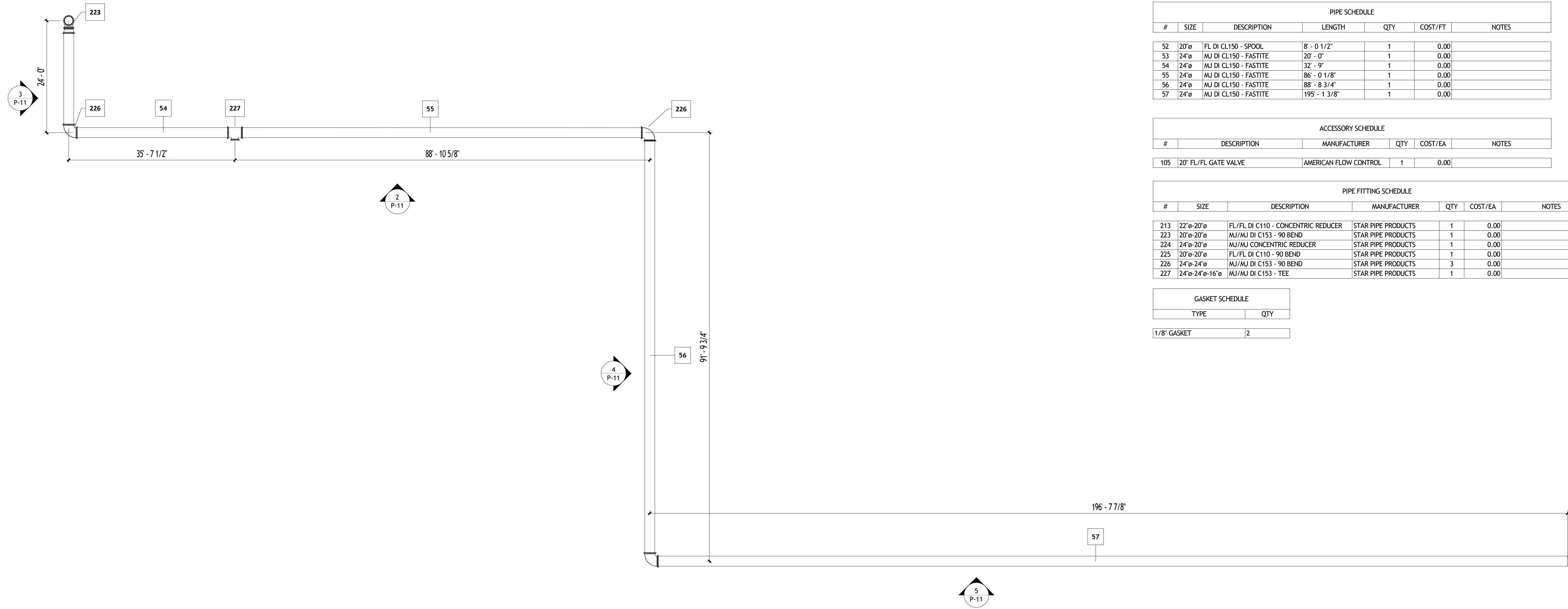
ACCESSORY SCHEDULE					
#	DESCRIPTION	MANUFACTURER	QTY	COST/EA	NOTES





① 3D VIEW

② 3D VIEW



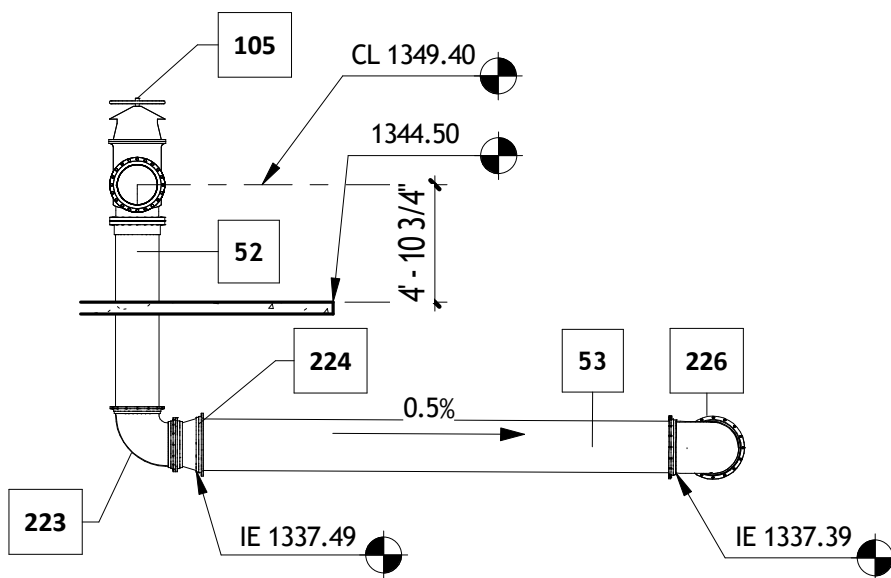
PIPE SCHEDULE						
#	SIZE	DESCRIPTION	LENGTH	QTY	COST/FT	NOTES
52	20" ø	FL DI CL150 - SPOOL	8' - 0 1/2"	1	0.00	
53	24" ø	MJ DI CL150 - FASTITE	20' - 0"	1	0.00	
54	24" ø	MJ DI CL150 - FASTITE	32' - 9"	1	0.00	
55	24" ø	MJ DI CL150 - FASTITE	86' - 0 1/8"	1	0.00	
56	24" ø	MJ DI CL150 - FASTITE	88' - 8 3/4"	1	0.00	
57	24" ø	MJ DI CL150 - FASTITE	195' - 1 3/8"	1	0.00	

ACCESSORY SCHEDULE					
#	DESCRIPTION	MANUFACTURER	QTY	COST/EA	NOTES
105	20" FL/FL GATE VALVE	AMERICAN FLOW CONTROL	1	0.00	

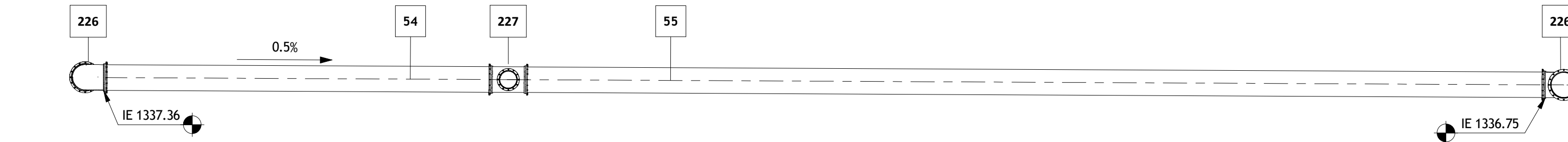
PIPE FITTING SCHEDULE						
#	SIZE	DESCRIPTION	MANUFACTURER	QTY	COST/EA	NOTES
213	22" ø-20" ø	FL/FL DI C110 - CONCENTRIC REDUCER	STAR PIPE PRODUCTS	1	0.00	
223	20" ø-20" ø	MJ/MJ DI C153 - 90 BEND	STAR PIPE PRODUCTS	1	0.00	
224	24" ø-20" ø	MJ/MJ CONCENTRIC REDUCER	STAR PIPE PRODUCTS	1	0.00	
225	20" ø-20" ø	FL/FL DI C110 - 90 BEND	STAR PIPE PRODUCTS	1	0.00	
226	24" ø-24" ø	MJ/MJ DI C153 - 90 BEND	STAR PIPE PRODUCTS	3	0.00	
227	24" ø-24" ø-16" ø	MJ/MJ DI C153 - TEE	STAR PIPE PRODUCTS	1	0.00	

GASKET SCHEDULE		
TYPE	QTY	
1/8" GASKET	2	

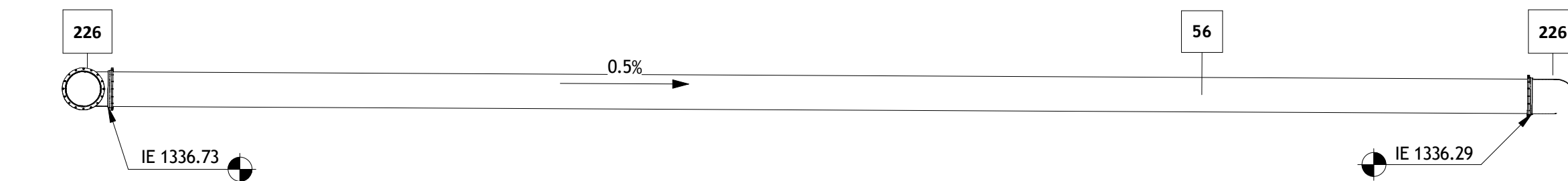
① ENLARGED 24" CONNECTION
3/32" = 1'-0"



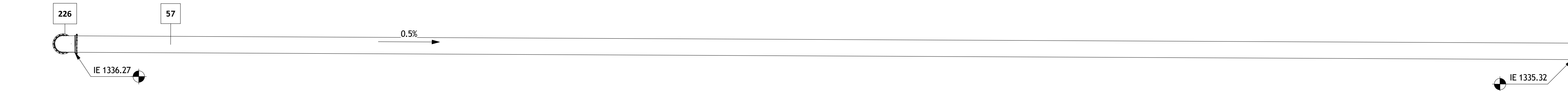
③ 24" CONNECTION 2
1/8" = 1'-0"



② 24" CONNECTION 1
1/8" = 1'-0"



④ 24" CONNECTION 3
1/8" = 1'-0"



⑤ 24" CONNECTION 4
1/8" = 1'-0"

SCALE:

