

Kitchen Palette
The *only* interchangeable backsplash

System Installation Instructions

Materials You'll Need:

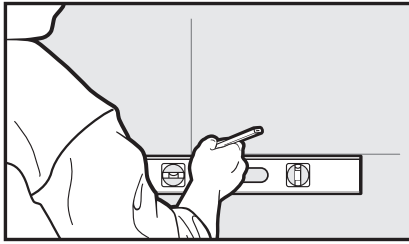
The minimum space requirement - 26 1/16" w x 18 1/16" h. (Installation takes approximately 30 minutes.)

Included in the system:

- Frame
- Palette
- Template
- 10 Anchor Screws
- 2 Latches
- 1 #6 Screw
- Safety Strap

Tools Required:

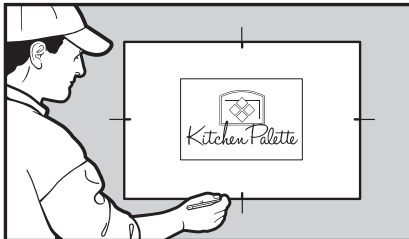
- Pencil
- Level
- Drill with 1" bit
- Tape measure
- Drywall plunge saw or zip saw
- Cross thread screwdriver



Step One

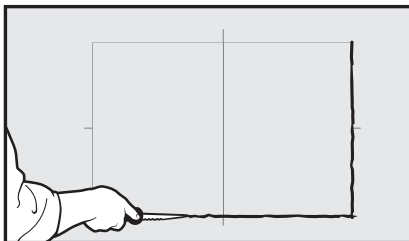
Before you begin, locate any electric lines, gas lines, plumbing, wiring and/or other before cutting into the drywall. Take care to avoid cutting or damaging these items. Shut off all electrical power and gas to the installation area.

- Measure for location and find center point of where you would like to install the Kitchen Palette frame.
- Mark center line of frame, both vertically and horizontally.
- Use your level to mark a line on the wall.



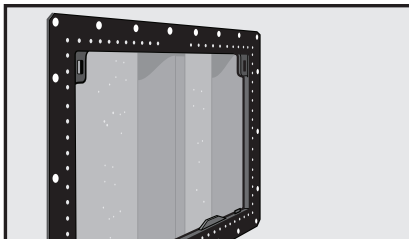
Step Two

- Place the included template on your center line marks.
- Use your level to extend the line both vertically and horizontally if needed.
- Use your pencil to draw a line around the template, marking the area of the drywall to be cut.



Step Three

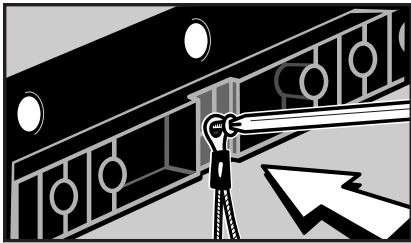
- Use drywall plunge saw or zip saw to cut on frame outline, taking care to avoid cutting or damaging any electrical lines, gas lines, plumbing or wiring.
- Remove drywall.
- Clean any debris from area.



Step Four

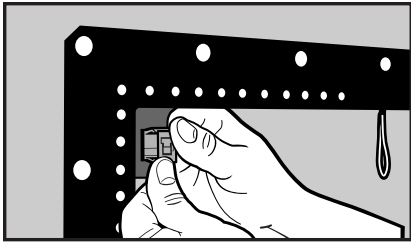
- Set Kitchen Palette frame (with latch slots on the top) into drywall opening to check for fit.
- If there is a stud located directly behind either latch hole, drill a 1" hole in the stud to clear a space for the latch.

(continued)



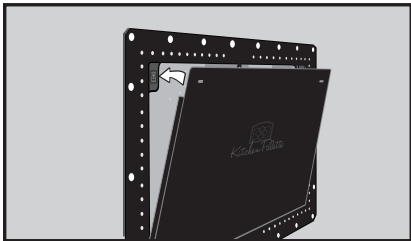
Step Five

- Remove frame from the wall opening after testing fit.
- Attach safety strap to the back of the frame at the top center, with screw provided.



Step Six

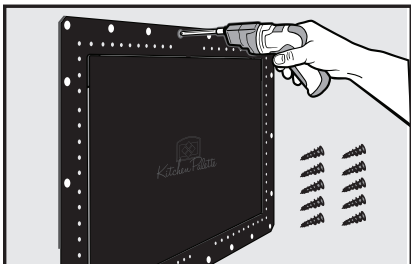
- Insert the provided latches into the frame in the rectangular holes from the front of palette, as shown. Make sure that when you insert the latches that the wider part of each latch opening is on top, making the shape of a “T”.



Step Seven

- Insert frame back into drywall opening.
- **Insert the palette into the bottom of the frame and attach the safety strap (located at the top of the frame) to the notch located at the top of the palette**
- Push the top of the palette back into the frame at both upper corners until you hear latches “click”

Note: Frame is not secured to the drywall yet, so please do not leave unattended until secured in next step.

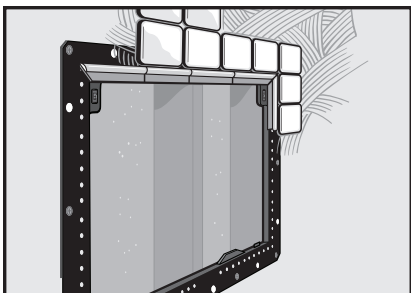


Step Eight

- Attach the frame to the drywall with anchors provided in 10 locations. Preferred attachment locations are 1 anchor screw per corner, 1 additional anchor screw per side, and 2 additional anchor screws on both top and bottom. **Before anchoring the frame into the wall make sure the safety strap, latches and palette are all installed.**
- Confirm free movement of palette in frame by removing and reinserting palette a few times. If palette does not move freely within the frame remove anchors where necessary and reinsert anchors to allow free movement.

HINT: Do not over tighten anchors.

WARNING: Be sure to confirm free movement prior to moving to Step Nine.



Step Nine

- Installation of The Kitchen Palette System is complete. Finish by tiling to conceal the frame.
- Enjoy endless design possibilities with your new Kitchen Palette.

Log on to our website, for the latest tips and updates.

KitchenPalette.com • 888-998-0010



Like us on Facebook • Follow us on Twitter, Pinterest and Houzz

• Manufactured in the USA • All plastic used is recycled