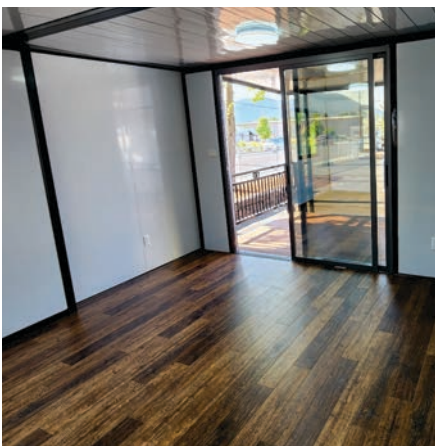


RVADU™



RV-ADU.com



Introducing **DeckHouse™** Studio

Secure / Private
Move In Ready
Meticulously Engineered
Open Floor Plan Studio
Finished Interior
Optional Kitchen
Large Bathroom
“Best of Class”

UtilityMate® Mfg. certified or listed by:



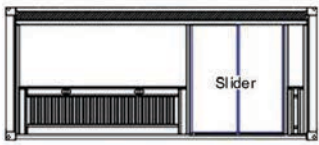
J.D. POWER



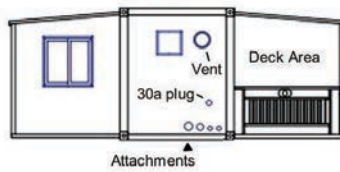
100% Steel Fabricated Frame



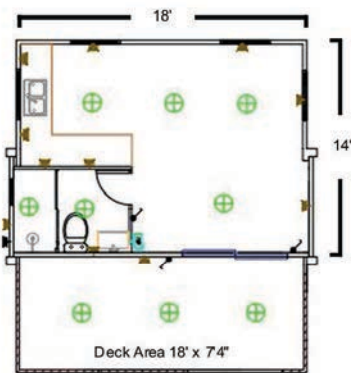
Front



Right



Top View



Total Livable Space: 252 sq ft

Total Deck Space: 131 sq ft

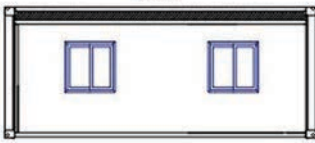
Windows:

Living 36" x 36" x 4

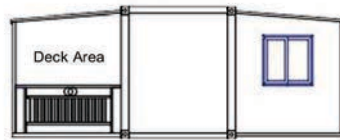
Bath (privacy) 21" x 21" x 1

Slider: 76" w x 85" t

Back



Left



RVADU™ Deckhouse is built using our best Commercial Grade **ShieldCore™** Products, including:

- Insulated Metal Siding
- Steel Insulated Core Panels
- Aluminum Framed, Dual Pane Tempered Glass, Adjustable Awning Windows
- 76" Wide Commercial Grade, Dual Pane Tempered Glass, Bi-Directional Sliding Door
- ½" Fiber Cement Sub-Flooring
- SPC Grade Flooring
- Exterior 30 Amp Power Twist-Lock, Waste and Water RV Connections

Bi-Directional, Sliding Glass Door / Aluminum Window Frames / Steel Insulated Core Wall



© 2025 UtilityMate® Manufacturing

