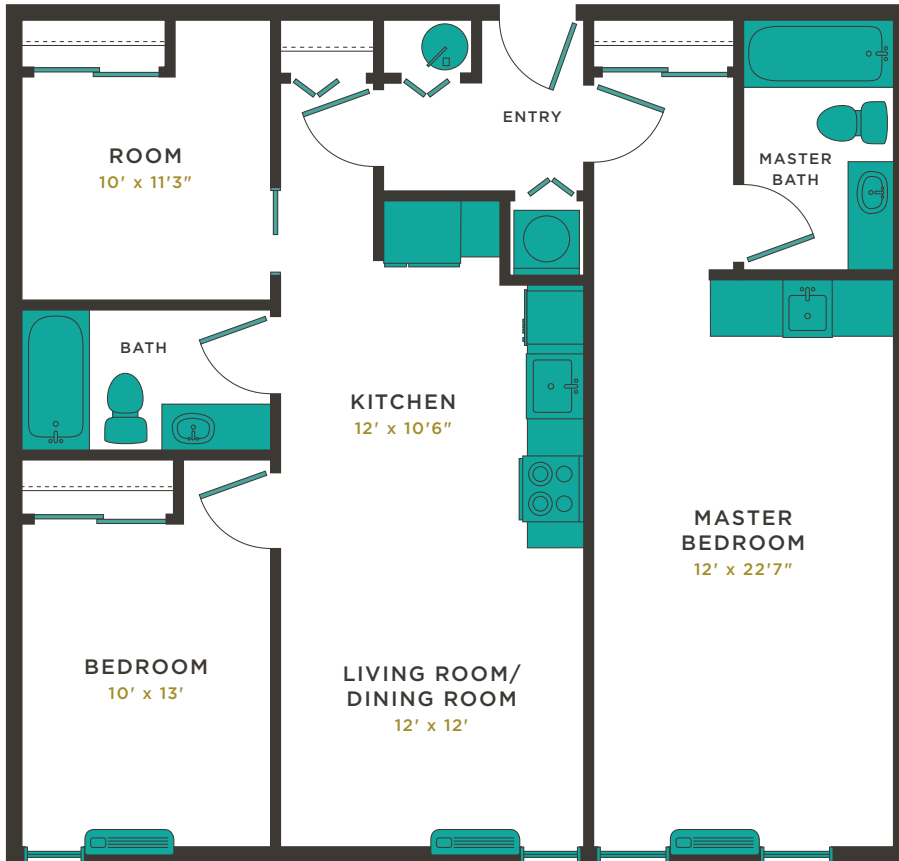


'Ehā (Plan C-Reversed)

THREE ROOMS, TWO BATHS | 1,145 SQ. FT.

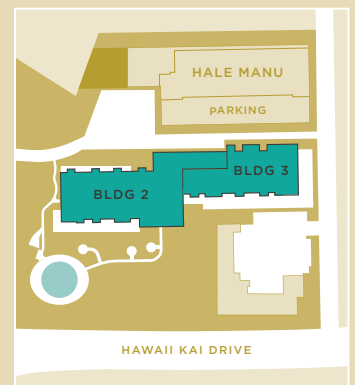
HALEKALAE
CONDOMINIUMS 7000 HAWAII KAI



FEATURES

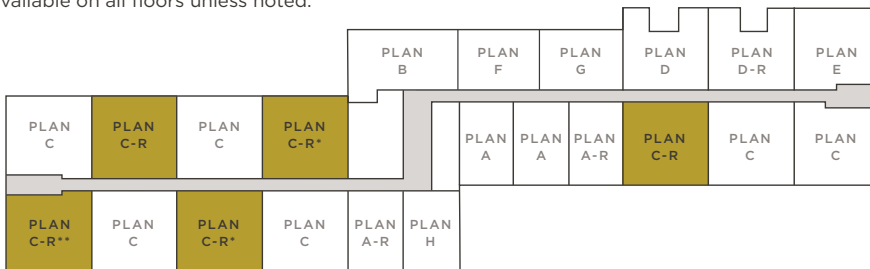
- Air-conditioning in every unit
- Energy-efficient appliances
- GE dishwasher
- GE 24" washer/dryer, stacked
- GE smooth-top range/oven
- GE micro/hood combo
- GE 25 cu ft side-by-side refrigerator
- Garbage disposal
- Grohe bathroom fixtures
- Easy-clean floors
- Double-pane tinted windows
- Low maintenance fees
- Separately metered units
- Philpotts-designed model units

PROPERTY MAP



FLOOR MAP

Units available on all floors unless noted.



*Available on floors 2-10 only **Corner Unit: 1,113 SQ. FT.

This is an artist's depiction of Developer's current proposed development concepts for the Project, which concepts continue to evolve and are subject to change without notice. All dimensions and square footage calculations are approximate and subject to change. Furnishings are represented for illustration purposes only. Units are not furnished. Any renderings, photos, drawings or other representations as to units or other elements that are delivered or shown to prospective purchasers may not accurately portray such units and other elements, and do not constitute a representation by Developer. Prices are subject to change without notice.

© 2018 Avalon Development. All rights reserved.

FOR MORE INFORMATION

808.369.1136
sales@halekalae.com

7000 Hawaii Kai Drive
Honolulu, HI 96825

www.halekalae.com

'Ehā (Plan C-Reversed)

THREE ROOMS, TWO BATHS | 1,145 SQ. FT.

HALEKALAE
CONDOMINIUMS 7000 HAWAII KAI

