

ACCESSORIES **AU** **UNLIMITED LLC.**

OPERATOR'S MANUAL

Accessories Unlimited Land Roller



Made in the USA

TABLE OF CONTENTS

Introduction	1
To the Purchaser	1
Safety Precautions	2
Before Operation	2
Notice.....	3
General safety	4
Operating Safety	5
Transport Safety	6
Transporting	7
Transport to Field Position	7
Transport to Transport Position	7
Hydraulic Safety	8
Maintenance Safety	9
Operation	10
Break-In	10
Pre-operation Checklist	10
Operation- Continued	11
Hook-up/ unhooking	11
Parts	12
Introduction	12
Land Roller Parts and Assembly	13
Land Roller Parts and Assembly	14
Land Roller Parts and Assembly	15
Land Roller Parts and Assembly	16
Land Roller Parts and Assembly	17
Torque Specification Table	18
Warranty	19

INTRODUCTION

TO THE PURCHASER

All products are designed to give safe, dependable service if they are operated and maintained according to instructions. Read and understand this manual before operation.

This manual has been prepared to assist the owner and operators in the safe operation and suitable maintenance of the equipment. The information was applicable to products at the time of manufacture and does not include modifications made afterwards.

Read and understand this operator's manual before attempting to put equipment into service. Familiarize yourself with the operating instructions and all the safety recommendations contained in this manual and those labeled on the equipment and on the skid steer. Follow the safety recommendations and make sure that those with whom you work follow them.

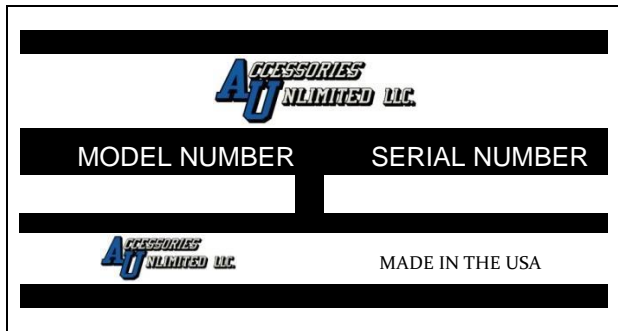
Illustrations

The illustrations may not necessarily reproduce the full detail and the exact shape of the parts or depict the actual models but are intended for reference only.

Direction Reference

All references to right and left, forward or rearward, are from the operator's seat, facing the steering wheel.

SERIAL PLATE



To assist your dealer in handling your needs, please record hereafter the model number and the serial number of your equipment and skid steer. It is also advisable to supply them to your insurance company. It will be helpful in the event that an equipment or skid steer is lost or stolen.

SKID STEER

IMPLEMENT

MODEL: _____

SERIAL NUMBER: _____

DATE OF PURCHASE: _____

DEALER NAME: _____

SAFETY PRECAUTIONS – CONTINUED

SAFETY PRECAUTIONS



SAFETY FIRST

This symbol, the industry's "Safety Alert Symbol", is used throughout this manual and on labels on the machine itself to warn of the possibility of personal injury. Read these instructions carefully. It is essential that you read the instructions and safety regulations before you attempt to assemble or use this unit.



DANGER: Indicates an immediate hazardous situation which, if not avoided, will result in death or serious injury.



WARNING: Indicates a potentially hazardous situation which, if not avoided, will result in death or serious injury.



CAUTION: Indicates a potentially hazardous situation which, if not avoided, may result in minor or moderate injury.

IMPORTANT: Indicates that equipment or property damage could result if instructions are not followed.

NOTE: Gives helpful information.

All products are designed to give safe, dependable service if they are operated and maintained according to instructions. **Read and understand this manual before operation.** It is the owner's responsibility to be certain anyone operating this product reads this manual, and all other applicable manuals to become familiar with this equipment and all safety precautions. Failure to do so could result in serious personal injury or equipment damage. If you have any questions, consult your dealer.

BEFORE OPERATION

Children

Tragic accidents can occur if the operator is not alert to the presence of children. Children are generally attracted to machines and work being done. Never assume children will remain where you last saw them.

1. Keep children out of the operating area and under the watchful eye of another responsible adult.
2. Be alert and turn machine off if children enter the work area.
3. Before and when backing, look behind for small children.
4. Never carry children while operating the machine. They may fall off and be seriously injured or interfere with the safe operation of the machine.
5. Never allow children to play on the machine or attachment even when they are turned off.

SAFETY PRECAUTIONS – CONTINUED

6. Never allow children to operate the machine even under adult supervision.
7. Use extra care when approaching blind corners, shrubs, trees, or other obstructions that might hide children from sight.

NOTICE

YOU are responsible for the safe operation and maintenance of your Accessories Unlimited Land roller. YOU must ensure that you and anyone else, who is going to operate, maintain or work around the Land roller be familiar with the operating and maintenance procedures and related SAFETY information contained in this manual. This manual will take you step-by step through your working day and alerts you to all good safety practices that should be adhered to while operating this equipment.

Remember, YOU are the key to safety. Good safety practices not only protect you but also the people around you. Make these practices a working part of your safety program. Be certain that EVERYONE operating this equipment is familiar with the recommended operating and maintenance procedures and follows all the safety precautions. Most accidents can be prevented. Do not risk injury or death by ignoring good safety practices.

- Land roller owners must give operating instructions to operators or employees before allowing them to operate the Land roller, and at least annually thereafter per OSHA regulation 1928.51.
- The most important safety device on this equipment is a SAFE operator.
- It is the operator's responsibility to read and understand ALL Safety and Operating instructions in the manual and to follow these.
- All accidents can be avoided.
- A person who has not read and understood all operating and safety instructions is not qualified to operate the machine.
- An untrained operator exposes himself and bystanders to possible serious injury or death.
- Do not modify the equipment in any way.
- Unauthorized modification may impair the function and/or safety and could affect the life of the equipment.

GENERAL SAFETY

1. Read and understand the Operator's Manual and all safety signs before operating, maintaining or adjusting the Land roller.
2. Install and properly secure all shields and guards before operating. Use hitch pin with a mechanical locking device.

SAFETY PRECAUTIONS – CONTINUED

3. Have a first-aid kit available for use should the need arise and know how to use it.
4. Have a fire extinguisher available for use should the need arise and know how to use it.
5. Wear appropriate protective gear. This list includes but is not limited to:
 - A hard hat
 - Protective shoes with slip resistant soles
 - Protective glasses or goggles
 - Heavy gloves
 - Wet weather gear
 - Hearing protection
 - Respirator or filter mask
6. Clear the area of people, especially small children, and remove foreign objects from the machine before starting and operating.
7. Do not allow riders.
8. Stop tractor engine, set park brake, remove ignition key and wait for all moving parts to stop before servicing, adjusting, repairing or unplugging.
9. Review safety related items with all operators annually.

OPERATING SAFETY

TO THE NEW OPERATOR OR OWNER

The Accessories Unlimited Land roller is designed to provide a smooth and level surface.

It is the responsibility of the owner or operator to read this manual carefully to learn how to operate the machine safely. Safety is everyone's business. By following safe operating practices, a safe environment is provided for the operator and bystanders.

By following the operating instructions in conjunction with a good maintenance program your machine will provide many years of trouble-free service.

1. Read and understand the Operator's Manual and all safety signs before using.
2. Stop tractor engine, set park brake, remove ignition key and wait for all moving parts to stop before servicing, adjusting, repairing or unplugging.

SAFETY PRECAUTIONS – CONTINUED

3. Keep hands, feet, hair and clothing away from all moving and/or rotating parts.
4. Do not allow riders on the Land roller tractor during operation or transporting.
5. Keep all shields and guards in place when operating (if applicable).
6. Clear the area of all bystanders, especially children, before starting.
7. Do not operate machine on overly steep side hills or slopes.
8. Be careful when working around or maintaining a high-pressure hydraulic system.
9. Ensure all components are tight and in good repair before starting.
10. Clean all lights before transporting on a highway or public road. Be sure to check with local highway authorities and comply with their lighting requirements.

TRANSPORT SAFETY

1. Read and understand ALL the information in the Operator's Manual regarding procedures and SAFETY when operating the Land roller in the field/yard or on the road.
2. Check with local authorities regarding machine transport on public roads.
3. Obey all applicable laws and regulations.
4. Always travel at a safe speed. Use caution when making corners or meeting traffic.
5. Make sure all the lights, reflectors and safety signage that are required by the local highway and transport authorities are in place, are clean and can be seen clearly by all overtaking and oncoming traffic.
6. Keep to the right and yield the right-of-way to allow faster traffic to pass. Drive on the road shoulder, if permitted by law.
7. Always use hazard warning flashers on tractor when transporting unless prohibited by law.
8. Always use a pin with provisions for a mechanical retainer and a safety chain when attaching to a tractor or towing vehicle.

TRANSPORTING

Use the following guidelines while transporting the Land roller:

1. Use a safety chain.

SAFETY PRECAUTIONS – CONTINUED

2. Ensure all transport locks are securely in place.
3. Be sure hazard lights are flashing and warning decals are visible.
4. MAXIMUM RECOMMENDED TRANSPORT SPEED: 15 mph. (Road Conditions. Field speeds may be lower.)
5. IMPORTANT: *UNDER NO CIRCUMSTANCES SHOULD THERE EVER BE RIDERS WHILE THE LANDROLLER IS IN TRANSPORT.*

TRANSPORT TO FIELD POSITION

1. Drive the land roller onto level ground so it is straight behind the tractor.
2. Remove all transport bars and pins. You may need to activate (extend) the hydraulic cylinders to allow removal of the cylinder transport bars and pins.
3. Activate the cylinders on the steer legs until they are both turned out fully.
4. Back up until each wing is at 45 degrees or more.
5. Lower the drums to the ground and then continue to back up.
6. Once wings are rolled all the way out and all in a straight line activate the wing locks.
7. If you have a manual floating hitch you will want to remove the turn buckles so the hitch can float.
8. If you have a hydraulic floating hitch open the transport valves and put your tractor into float.

TRANSPORT TO TRANSPORT POSITION

1. Drive the land roller onto level ground so it is straight behind the tractor.
2. Put steer legs into the straight position.
3. Deactivate the hydraulic wing locks.
4. Pull ahead until wings are at a 45 degree angle and then lift the unit up with the lift legs. Then drive ahead until unit is in a straight line.
5. Now activate the floating hitch until it is at the height you want and lock the valves in transport position.

SAFETY PRECAUTIONS – CONTINUED

6. Replace all transport bars and pins.
7. Once in place release the hydraulic cylinder pressure to allow the weight to be transferred to the locking bars and pins.
8. You are now ready for road transport.

HYDRAULIC SAFETY

1. Always place all tractor hydraulic controls in neutral before dismounting.
2. Make sure that all components in the hydraulic system are kept in good condition and are clean.
3. Replace any worn, cut, abraded, flattened or crimped hoses and metal lines.
4. Do not attempt any makeshift repairs to the hydraulic lines, fittings or hoses by using tape, clamps or cements.
5. The hydraulic system operates under extremely high-pressure. Such repairs will fail suddenly and create a hazardous and unsafe condition.
6. Wear proper hand and eye protection when searching for a high-pressure hydraulic leak. Use a piece of wood or cardboard as a backstop instead of hands to isolate and identify a leak.
7. If injured by a concentrated high-pressure stream of hydraulic fluid, seek medical attention immediately.
8. Serious infection or toxic reaction can develop from hydraulic fluid piercing the skin surface.
9. Before applying pressure to the system, make sure all components are tight and that lines, hoses and couplings are not damaged.

MAINTENANCE SAFETY

1. Review the Operator's Manual and all safety items before working with, maintaining or operating the Land roller.
 2. Stop the tractor engine, set park brake, remove ignition key and wait for all moving parts to stop before servicing, adjusting, repairing or unplugging.
-

SAFETY PRECAUTIONS – CONTINUED

3. Keep hands, feet, clothing and hair away from all moving and/or rotating parts.
4. Clear the area of bystanders, especially children, when carrying out any maintenance and repairs or making any adjustments.
5. Place safety stands or large blocks under the frame before removing tires or working beneath the machine.
6. Be careful when working around or maintaining a high-pressure hydraulic system.
7. Wear proper eye and hand protection when searching for a high-pressure hydraulic leak.
8. Use a piece of wood or cardboard as a backstop when searching for a pin hole leak in a hose or a fitting.
9. Always relieve pressure before disconnecting or working on hydraulic system.
couplings are not damaged.

OPERATION

BREAK-IN

Although there are no operational restrictions on the Land roller when it is new, there are some checks that should be done when using the machine for the first time, follow this procedure:

IMPORTANT: *It is important to follow the Break-In procedures especially those listed in the "Before using" section below to avoid damage:*

A. Before using:

1. Read Safety Info. & Operator's Manual.
2. Complete steps in "Pre-Operation Checklist".
3. Lubricate all grease points.
4. Check all bolt tightness.

B. After operating for 2 hours:

1. Check all hardware. Tighten as required.
2. Check all hydraulic system connections.
3. Tighten if any are leaking.

PRE-OPERATION CHECKLIST

It is important for both personal safety and maintaining good operational condition of the machine that the pre-operational checklist be followed.

Before operating the machine and each time thereafter, the following areas should be checked off:

1. Lubricate the machine per the schedule outlined in the "Maintenance Section".
2. Use only a tractor with adequate power to pull the Land roller under ordinary operating conditions.
3. Ensure that the machine is properly attached to the tractor using a drawbar pin with provisions for a mechanical retainer.
4. Make sure that a retainer such as a cotter pin is installed.

OPERATION- CONTINUED

5. Before using, inflate tires to recommended PSI rating on the side of the Tire
6. Ensure that a safety chain is installed on the hitch.
7. Check oil level in the tractor hydraulic reservoir. Fill as required.
8. Inspect all hydraulic lines, hoses, fittings and couplers for tightness. Tighten if there are leaks.
9. Use a clean cloth to wipe any accumulated dirt from the couplers before connecting to the tractor's hydraulic system.

HOOK-UP/ UNHOOKING

The Land roller should always be parked on a level, dry area that is free of debris and foreign objects.

Follow this procedure to hook-up:

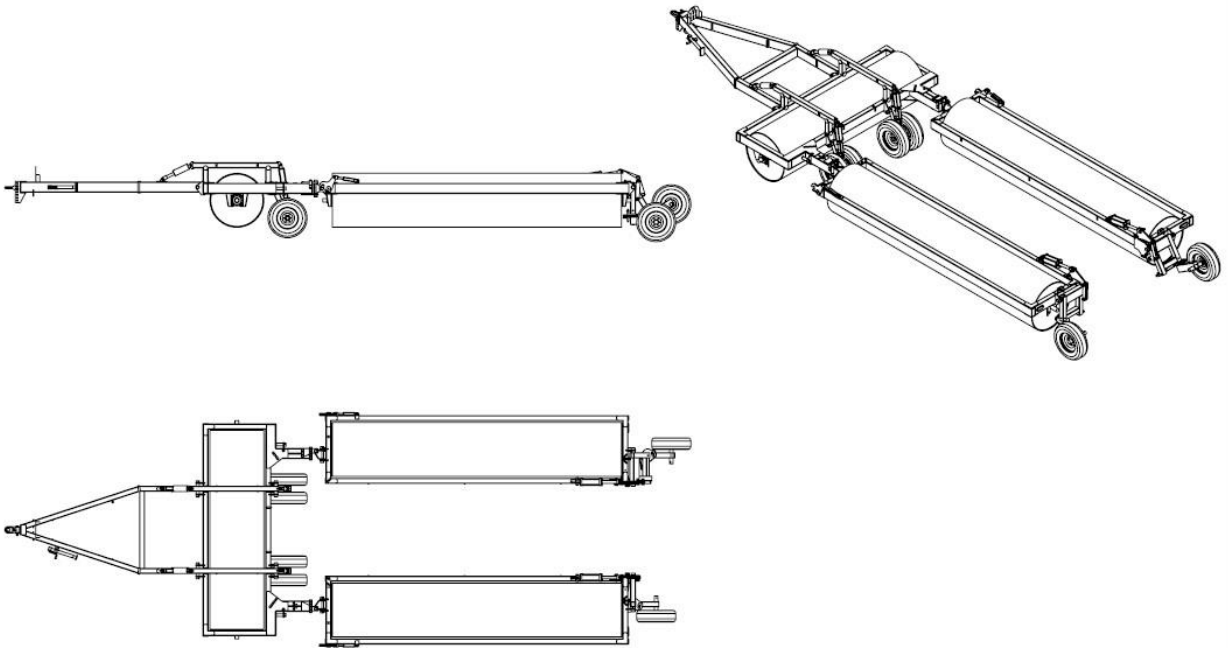
1. Clear the area of bystanders and remove foreign objects from the machine and working area.
2. Make sure there is enough room to back the tractor up to the trailer hitch. Start the tractor and slowly back it up to the hitch point.
3. Stop the tractor engine, place all controls in neutral, set park brake and remove ignition key before dismounting.
4. Use the jack to raise or lower the hitch to align with the drawbar.
5. Install a drawbar pin with provisions for a mechanical retainer such as a cotter pin. Install the retainer.
6. Install a safety chain between the tractor and the hitch.
7. Connect the hydraulics. To connect, proceed as follows:
 - Use a clean cloth or paper towel to clean the couplers on the ends of the hoses.
 - Clean the area around the couplers on the tractor.
 - Remove the plastic plugs from the couplers and insert the male ends.
 - Be sure to match the pressure and return line to one valve bank.
8. Connect lights (electrical socket plug) to tractor.
9. Raise the hitch jack and rotate it 90° to place in its stowed position.
10. When unhooking from the tractor, reverse the above procedure.

PARTS

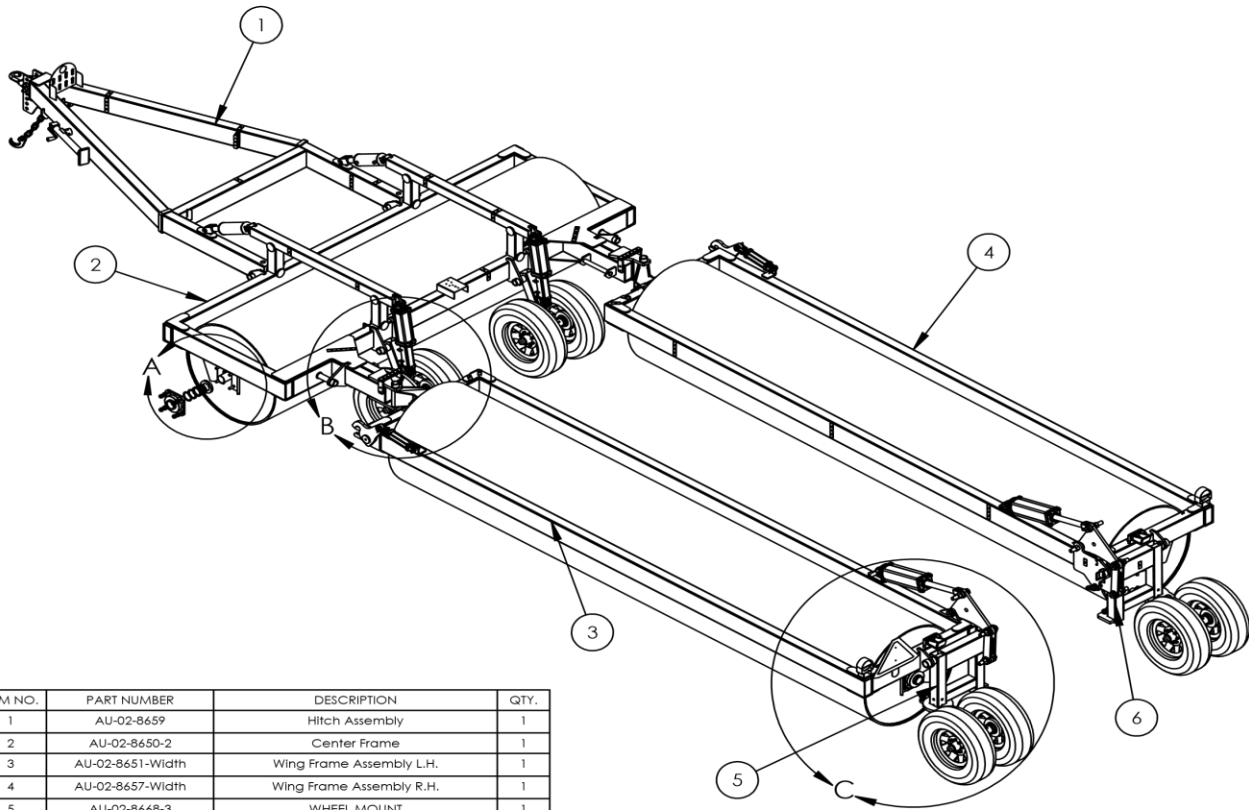
INTRODUCTION

All parts are illustrated in "exploded views" which show the individual parts in the normal relationship to each other. Reference numbers are used in the illustrations. These numbers correspond to those in the "*Item No.*" column and are followed by the description and quantity required.

The manufacturer reserves the right to change, modify, or eliminate from time to time, for technical or other reasons, certain or all data, specifications, or the product or products themselves, without any liability or obligation.



PARTS



ITEM NO.	PART NUMBER	DESCRIPTION	QTY.
1	AU-02-8659	Hitch Assembly	1
2	AU-02-8650-2	Center Frame	1
3	AU-02-8651-Width	Wing Frame Assembly L.H.	1
4	AU-02-8657-Width	Wing Frame Assembly R.H.	1
5	AU-02-8668-3	WHEEL MOUNT	1
6	AU-02-8779	Rear Steer Lift Leg R.H.	1



PROPRIETARY AND CONFIDENTIAL
 THE INFORMATION CONTAINED IN THIS DRAWING IS THE SOLE PROPERTY OF ACCESSORIES UNLIMITED. ANY REPRODUCTION IN PART OR AS A WHOLE WITHOUT THE WRITTEN PERMISSION OF ACCESSORIES UNLIMITED IS PROHIBITED.

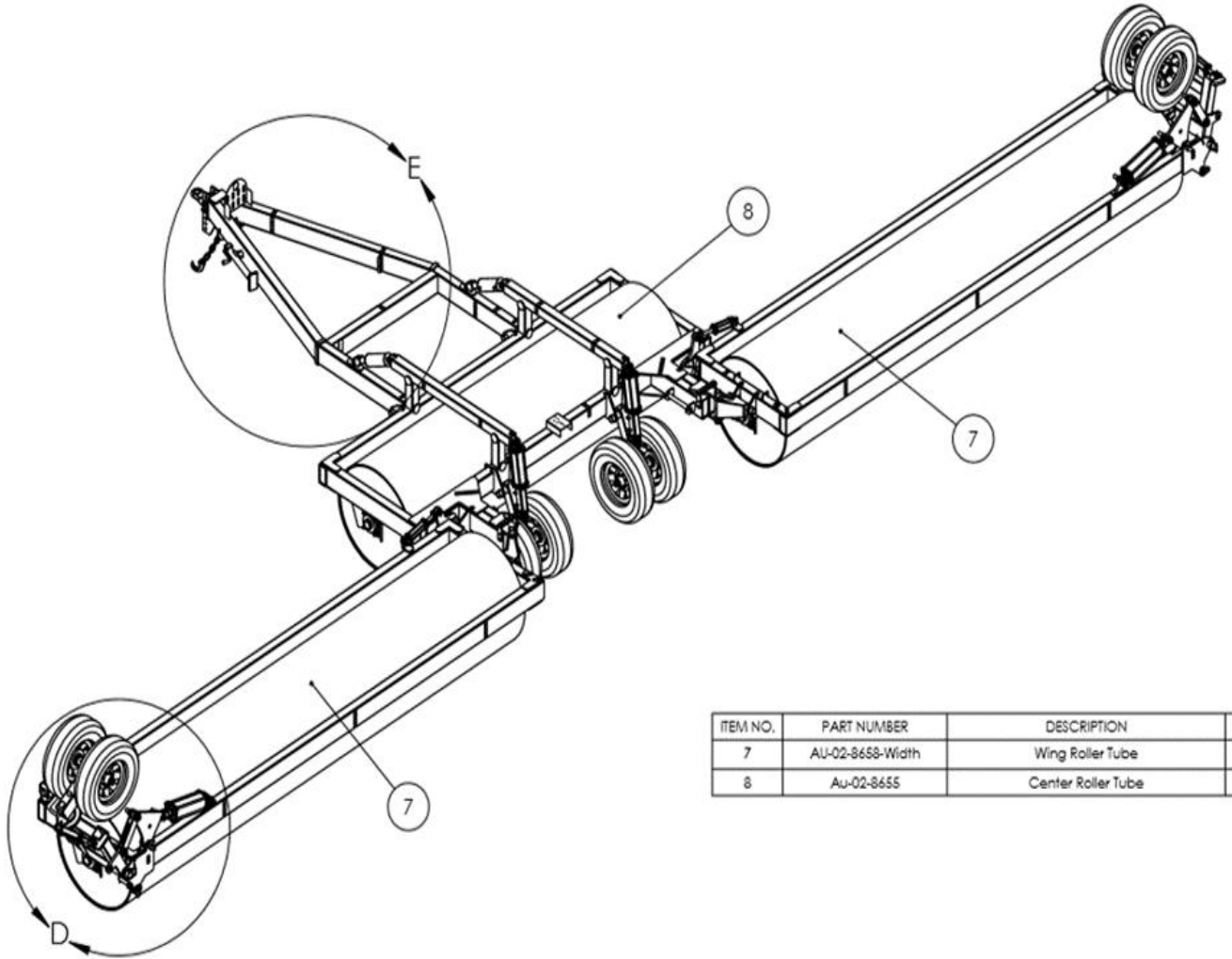
UNLESS OTHERWISE SPECIFIED: DIMENSIONS ARE IN INCHES TOLERANCES: FRACTIONAL $\pm 1/32$ ANGULAR: MACH $\pm 1^\circ$ BEND $\pm 1^\circ$ TWO PLACE DECIMAL $\pm .030$ THREE PLACE DECIMAL $\pm .010$	NAME	DATE
	DRAWN KP	11/19/2018
	LAST SAVE:	11/20/2018

TITLE:
 LAND ROLLER

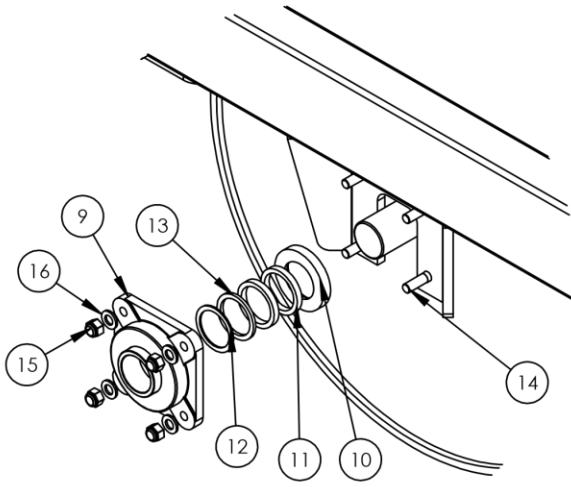
MATERIAL	FINISH
DO NOT SCALE DRAWING	
3RD ANGLE PROJECTION	

SIZE A	DWG. NO. AU-01-8650-4	REV
WEIGHT:	SHEET 1 OF 4	

PARTS – CONTINUED

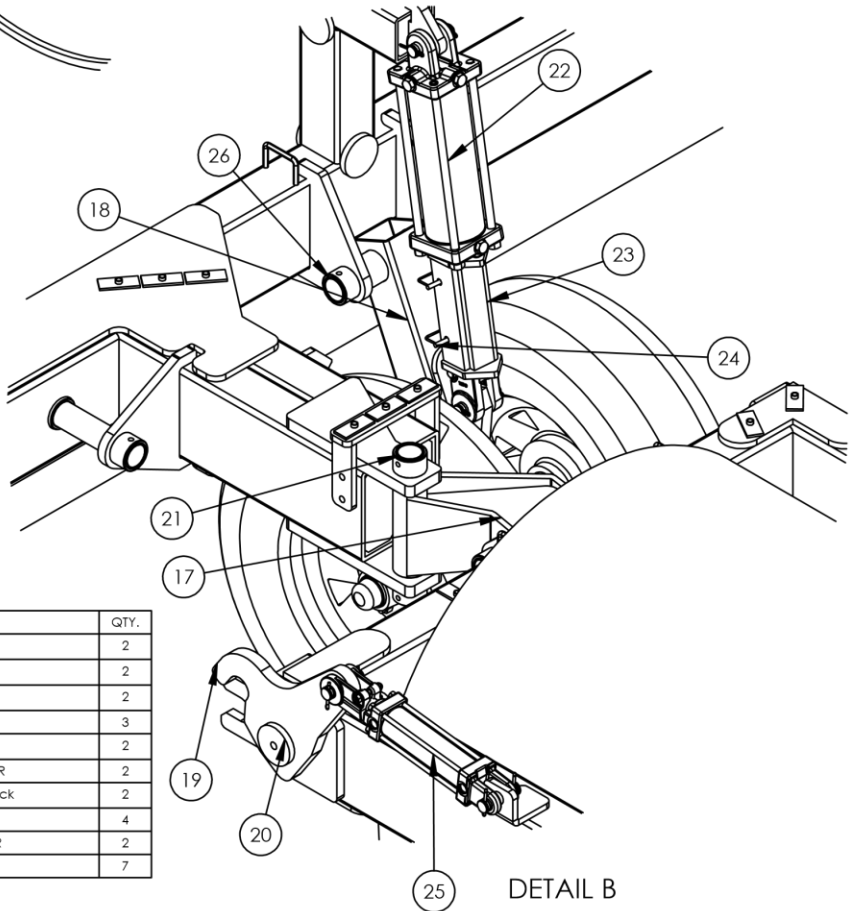


ITEM NO.	PART NUMBER	DESCRIPTION	QTY.
7	AU-02-8658-Width	Wing Roller Tube	2
8	Au-02-8655	Center Roller Tube	1



DETAIL A

ITEM NO.	PART NUMBER	DESCRIPTION	QTY.
9	AU-03-8677	3" flange Bearing	6
10	AU-03-8915	SHIM	6
11	AU-03-8916-.5	SHIM	12
12	AU-03-8916-.125	SHIM	6
13	AU-03-8916-.25	SHIM	6
14	HDW-3-4 16 X3.00 HH GR8	3/4-16X3 HH GR8 ZINC YELLOW FINE THREAD BOLT	24
15	HDW-3-4 16 Nylock Nut	3/4 Nylock Nut	24
16	HDW-3-4FWSAE	3/4 FLAT WASHER SAE	24



DETAIL B

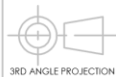
ITEM NO.	PART NUMBER	DESCRIPTION	QTY.
17	AU-02-8678	Wing Pivot	2
18	AU-02-8656	front Lift Leg	2
19	AU-03-8672	Wing Lock	2
20	AU-03-8713	Washer	3
21	AU-03-8721	pin	2
22	AU-02-8665-	4X10 CYLINDER	2
23	AU-02-8667	Front Lift Leg Lock	2
24	AU-03-8762	5/16 Lock Pin	4
25	AU-02-8666-	2X6 CYLINDER	2
26	AU-03-8720	Pin	7



PROPRIETARY AND CONFIDENTIAL
 THE INFORMATION CONTAINED IN THIS DRAWING IS THE SOLE PROPERTY OF ACCESSORIES UNLIMITED. ANY REPRODUCTION IN PART OR AS A WHOLE WITHOUT THE WRITTEN PERMISSION OF ACCESSORIES UNLIMITED IS PROHIBITED.

UNLESS OTHERWISE SPECIFIED:
 DIMENSIONS ARE IN INCHES
 TOLERANCES:
 FRACTIONAL $\pm 1/32$
 ANGULAR: MACH $\pm 1^\circ$ BEND $\pm 1^\circ$
 TWO PLACE DECIMAL $\pm .030$
 THREE PLACE DECIMAL $\pm .010$

MATERIAL



DO NOT SCALE DRAWING

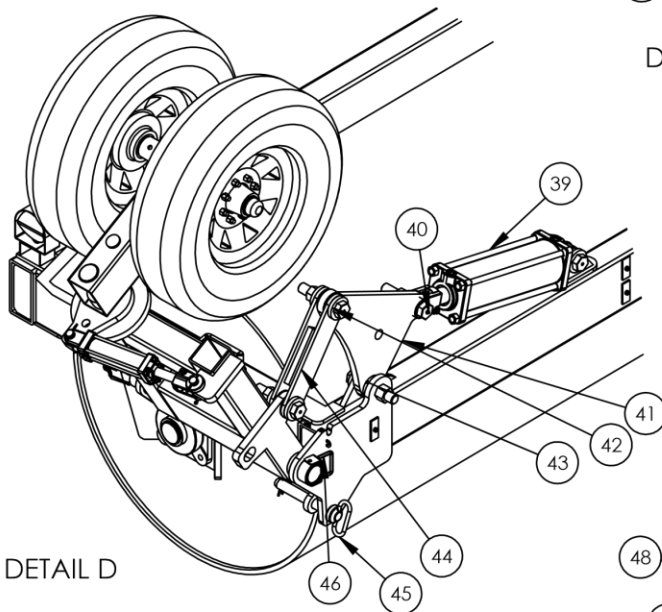
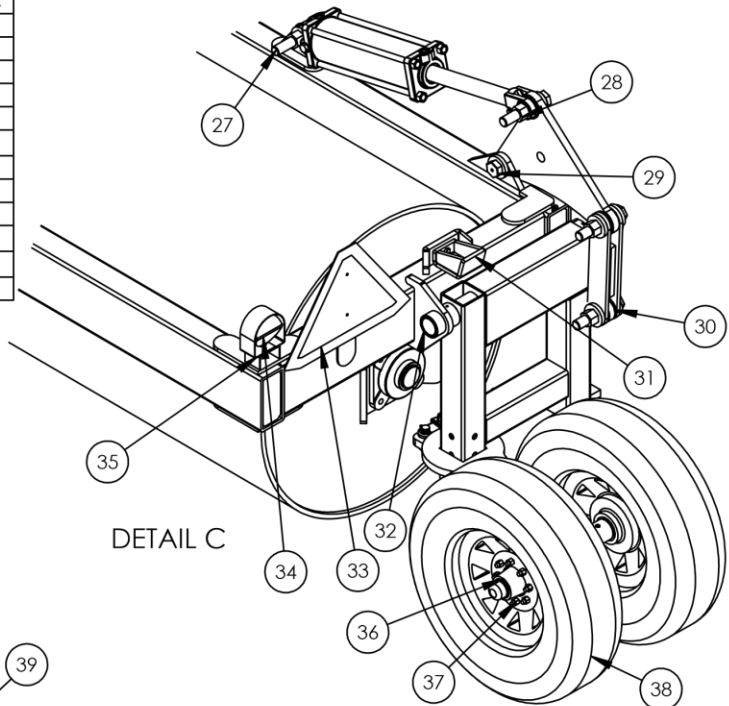
FINISH

NAME	DATE
DRAWN: KP	11/19/2018
LAST SAVE:	11/20/2018

TITLE:
 LAND ROLLER

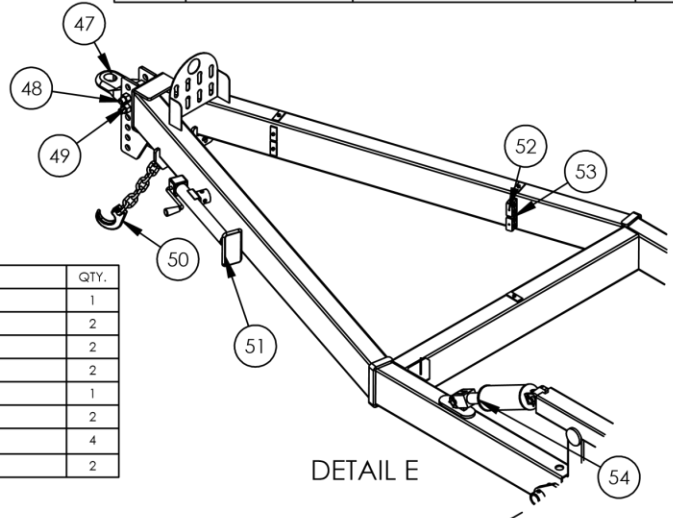
SIZE	DWG. NO.	REV
A	AU-01-8650-4	
WEIGHT:	SHEET 3 OF 4	

ITEM NO.	PART NUMBER	DESCRIPTION	QTY.
27	AU-03-8798	Hardware	2
28	1.250 Nut	Hardware	10
29	AU-03-8799	Hardware	8
30	1.250 Washer	HARDWARE	12
31	AU-02-8782	UP STOP	2
32	AU-03-8699	Rear Lift Leg Pivot	2
33	AU-03-8921	CAUTION SIGN	1
34	AU-03-8917	LIGHT	2
35	AU-03-8919	LIGHT GUARD	2
36	AU-02-8784	Hub with Spindle	8
37	AU-03-35101	Lug Nut	64
38	AU-03-10018-B	Wheel	8



ITEM NO.	PART NUMBER	DESCRIPTION	QTY.
39	AU-02-8770-2-	5X14 CYLINDER	2
40	HDW-.125-NPTS GF	1/8-NPT STRAIGHT GREASE FITTING	10
41	AU-03-8793	Rear Lift Linkage Plate	2
42	AU-03-8923	WASHER	12
43	AU-03-8924	SPACER	2
44	AU-02-8771	Rear Lift Linkage	2
45	AU-03-8763	LOCKING PIN	2
46	AU-02-8676	MOUNT	2

ITEM NO.	PART NUMBER	DESCRIPTION	QTY.
47	AU-03-8573	Pinle Hitch	1
48	1.00 X 7.00 Bolt	Hardware	2
49	1.00 Nut	Hardware	2
50	AU-02-8781	HITCH CHAIN	2
51	AU-03-10082	Jack	1
52	AU-03-8566	HOSE PLATE	2
53	AU-03-8567	1/2" Hose clamp	4
54	667-02-0006	DOZER CYLINDER	2




UNLESS OTHERWISE SPECIFIED:
 DIMENSIONS ARE IN INCHES
 TOLERANCES:
 FRACTIONAL $\pm 1/32$
 ANGULAR: MACH $\pm 1^\circ$ BEND $\pm 1^\circ$
 TWO PLACE DECIMAL $\pm .030$
 THREE PLACE DECIMAL $\pm .010$

NAME: KP
 DATE: 11/19/2018
 DRAWN: KP
 LAST SAVE: 11/20/2018

TITLE:
 LAND ROLLER

PROPRIETARY AND CONFIDENTIAL
 THE INFORMATION CONTAINED IN THIS
 DRAWING IS THE SOLE PROPERTY OF
 ACCESSORIES UNLIMITED. ANY
 REPRODUCTION IN PART OR AS A WHOLE
 WITHOUT THE WRITTEN PERMISSION OF
 ACCESSORIES UNLIMITED IS PROHIBITED.

MATERIAL
 DO NOT SCALE
 DRAWING
 3RD ANGLE PROJECTION

FINISH

SIZE: **A** DWG. NO.: AU-01-8650-4 REV: _____
 WEIGHT: _____ SHEET 4 OF 4

TORQUE SPECIFICATION TABLE

GENERAL SPECIFICATION TABLE

Use the following torques when special torques are not given. Note: These values apply to fasteners as received from supplier, when dry. These values do not apply if lubricants are used.

BOLT SIZES (SAE)	TORQUE	
INCHES	POUNDS-FOOT	NEWTONS-METER
1/4	5	7
5/16	10	14
3/8	20	27
7/16	25	41
1/2	88	119
9/16	121	164
5/8	165	224
3/4	297	403
7/8	440	597
1	638	865
1 1/8	840	1139
1 1/4	1180	1600
1 3/8	1570	2129
1 1/2	2070	2807

BOLT SIZES (METRIC)	TORQUE	
MILLIMETERS	POUNDS-FOOT	NEWTONS-METER
M6	10	13
M8	22	30
M10	40	54
M12	59	80

M14	93	126
M16	130	176
M18	168	228
M20	205	278

WARRANTY

ACCESSORIES UNLIMITED LLC ATTACHMENTS

Accessories Unlimited LLC warrants to its authorized dealers who in turn warrant to the original owner, that each new Accessories Unlimited LLC attachment will be free from proven defects in material and workmanship for twelve (12) months after delivery by the authorized Accessories Unlimited LLC dealer to the original buyer.

During the warranty period, the authorized Accessories Unlimited LLC dealer shall repair or replace, at Accessories Unlimited LLC's option, without charge for parts and labor, any part of the Accessories Unlimited LLC product which fails because of defects in material or workmanship. The owner shall provide the authorized Accessories Unlimited LLC dealer with prompt written notice of the defect and allow reasonable time for replacement or repair. Accessories Unlimited LLC may, at its option, require failed parts to be returned to the factory. Travel time of mechanics and transportation of the Accessories Unlimited LLC product to the authorized Accessories Unlimited LLC dealer for warranty work are the responsibility of the owner. The remedies provided in this warranty are exclusive.

This warranty does not cover replacement of scheduled service items and high wear items. The owner shall rely solely on the warranty, if any, of the respective manufacturers thereof. This warranty does not cover damages resulting from abuse, accidents, alterations, use of the Accessories Unlimited LLC product as an attachment on any equipment not approved by Accessories Unlimited LLC, air flow obstructions, or failure to maintain or use the Accessories Unlimited LLC product according to the instructions applicable to it.

THIS WARRANTY IS EXCLUSIVE AND IN LIEU OF ALL OTHER WARRANTIES AND CONDITIONS, EXCEPT THE WARRANTY OF TITLE, ACCESSORIES UNLIMITED LLC DISCLAIMS ALL OTHER WARRANTIES AND CONDITIONS, EXPRESS OR IMPLIED, INCLUDING ANY IMPLIED WARRANTIES OR CONDITIONS OF MERCHANTABILITY OR FITNESS FOR A PARTICULAR PURPOSE. IN NO EVENT SHALL ACCESSORIES UNLIMITED LLC OR THE AUTHORIZED ACCESSORIES UNLIMITED LLC DEALER BE LIABLE FOR ANY SPECIAL, INCIDENTAL, INDIRECT OR CONSEQUENTIAL DAMAGES, WHATSOEVER, INCLUDING, BUT NOT LIMITED TO, LOSS OR INTERRUPTION OF BUSINESS, LOST PROFITS, OR LOSS OF MACHINE USE, WHETHER BASED ON CONTRACT, WARRANTY, TORT, NEGLIGENCE, STRICT LIABILITY, STATUTE OR OTHERWISE, EVEN IF ACCESSORIES UNLIMITED LLC OR THE AUTHORIZED ACCESSORIES UNLIMITED LLC DEALER HAS BEEN ADVISED OF THE POSSIBILITY OF SUCH DAMAGES. THE TOTAL LIABILITY OF ACCESSORIES UNLIMITED LLC AND THE AUTHORIZED ACCESSORIES UNLIMITED LLC DEALERS WITH RESPECT TO THE PRODUCT AND SERVICES FURNISHED HEREUNDER SHALL NOT EXCEED THE PURCHASE PRICE OF THE PRODUCT UPON WHICH SUCH LIABILITY IS BASED.



OPERATOR'S MANUAL
Accessories Unlimited Skid Steer Blower

Made in the USA