

Introducing

# **E**PANEL

**An effective new low-cost  
solution for interior partitioning.  
Fit-out your next project more  
quickly, easily, sustainably.**



**[innovatusdesign.co](http://innovatusdesign.co)**

## E-Panel Benefits

**Simple, fast install** – no specialist skills required, keeping labour costs to a minimum and increasing project efficiency

**Low cost** – lower production & installation costs makes it more affordable than competitor products

**Strong** and **durable** yet lightweight

**Rigid** without being brittle

Effective **sound insulation**

**Aesthetic appeal** plus potential to **customise**

**Sustainable** – 60% of the product is made from recycled materials

**Easy removal** for efficient refurbishments



## Product Information

E-Panel comprises a polymer ABS undulating core set between two polymer ABS sheets. These materials are all derived from recycled plastic. A proprietary fire-retardant foam is injected throughout for optimum rigidity, strength and acoustics. Requiring no frame, each panel connects via a simple tongue-and-groove system with floorplates (for securing each panel to the floor), finished with corner pieces and end pieces.

### Suitability

E-Panel has a broad range of applications in commercial / residential / industrial, office, mixed-use, hospitality, health, education, retail and high-density residential projects.

### Warranty

Enjoy peace of mind with our 20-year manufacturers' warranty. E-Panel is fireproof up to 2 hours, water-resistant and sound-insulating.

### Composition

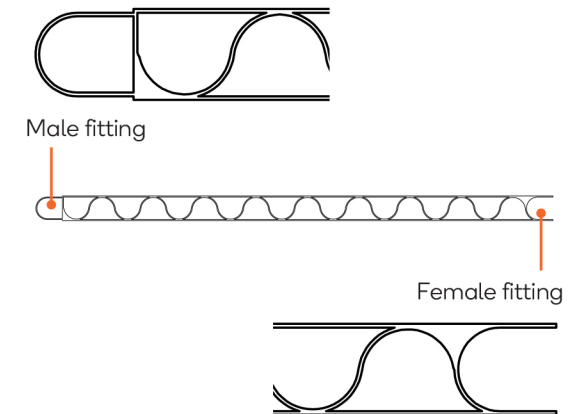
Polymer plastic, polyurethane-foam (containing isocyanates and polyol), flame retardants and amine catalysts. Plus, various components required for installation.

### Surface Treatments

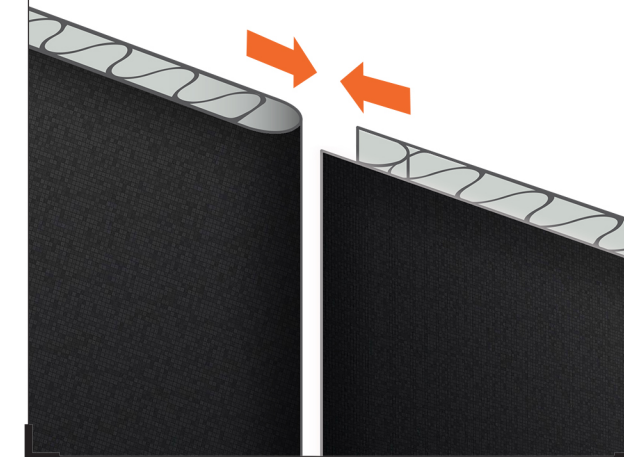
Similar to other wall systems, E-Panel can be cut to size, painted and patched as required.



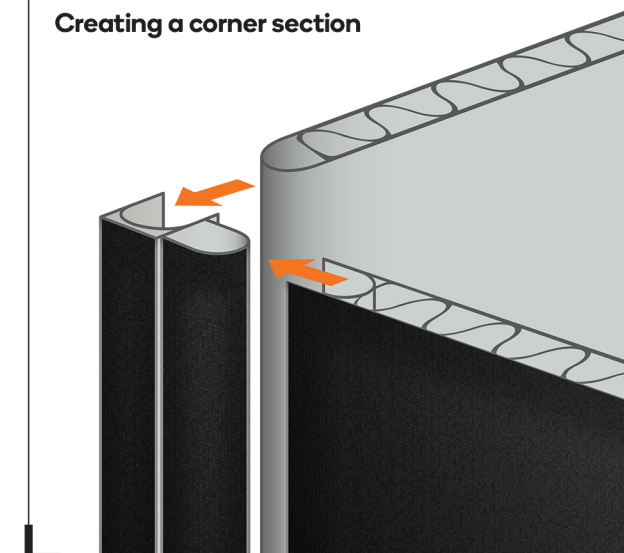
**Fig 01**  
**Profile**



**Fig 02**  
**How the panels fit together**



**Fig 03**  
**Creating a corner section**





# How This Works

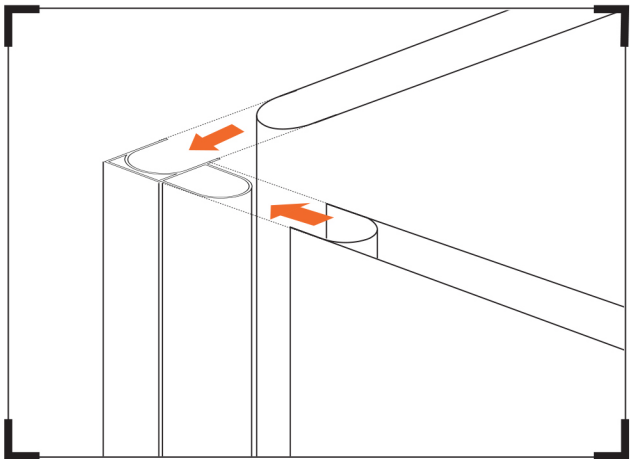
The panel illustrated here is 50mm in depth and 1000mm wide. The height will range from 2400mm - 3600mm.



**Fig 01**  
**CORNER JUNCTION**

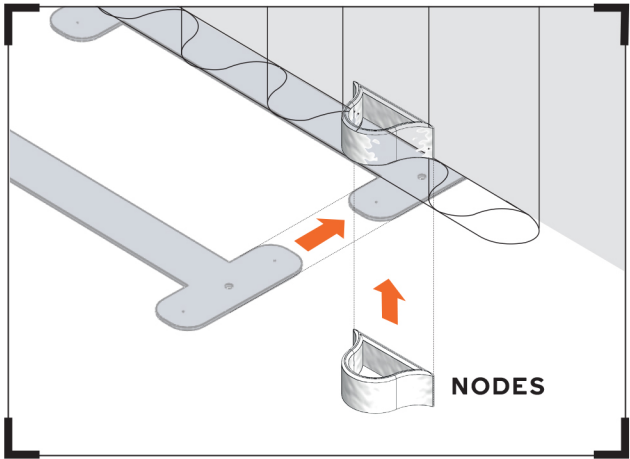
**Fig 03 & 04**  
**CAPPING ITEM**

**Fig 02**  
**FLOOR PLATE CONNECTOR**



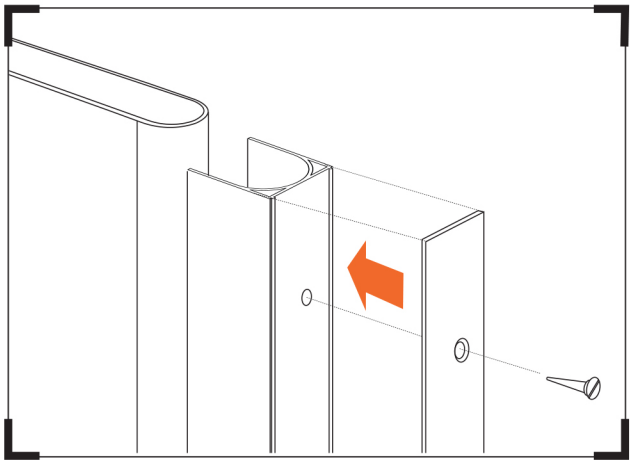
**Fig 01**  
**Creating the Corner Junction**

This diagram illustrates how two panels join at a corner junction.



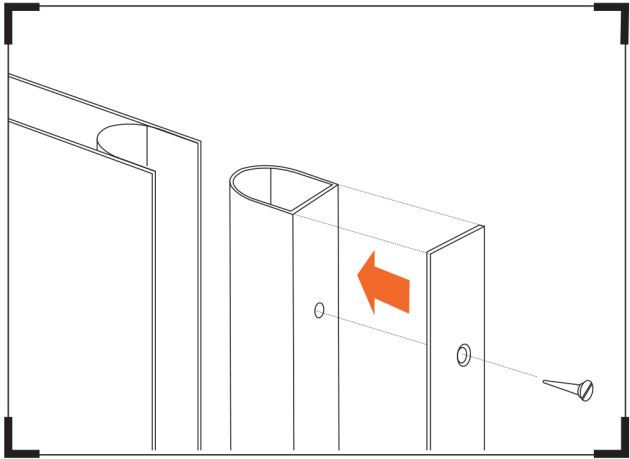
**Fig 02**  
**Adding the Foot Plate**

Foot Plate Connector is used to attach the panel to the floor. Nodes are added to the inside of the panel and fixed to the the 3 large holes. This secures the Foot Plate Connector to the panel.



**Fig 03**  
**Capping off the male connection**

This item is used to cap-off the male connection side of a panel in order to give a clean square finish to the panel.



**Fig 04**  
**Capping off the female connection**

This item is used to cap-off the female connection side of a panel.







## About Innovatus Design

E-Panel has been conceived by a team with 20 years of hands-on experience in residential and commercial construction, with a focus on refurbishment and fit-outs. After years of working in the industry using a host of other products, we identified a gap in the market for a superior prefabricated solution for quick commercial fit-outs. Harnessing all the benefits of recycled plastic, we saw the potential for a new partitioning product that would go up quickly and simply, without any specialist labour, and disassemble just as efficiently. Innovatus Design is based in Sydney.



### **Innovatus Design**

P.O Box 597 Bondi Junction, NSW 1355

(+61) 423-389-747

[Innovatusdesign.co](http://Innovatusdesign.co)