

RECENT PROJECTS: TLA'AMIN NATION



Arcwell Developments was awarded a project by Tla'amin Nation, (Powell River, BC) to construct four self-contained housing units as part of the qathet region's Complex Care Housing (CCH) program.

The scope of the project included a turn-key solution, covering design, module manufacturing, site preparation, delivery, and all on-site finishing work to ensure the homes were move-in ready. Arcwell's responsibilities included initial consultation, providing design drawings, establishing the project schedule, and constructing the units to the occupancy stage, which also involved all electrical and plumbing as well as landscaping and site finishing work.

This project demonstrates Arcwell's ability to meet complex requirements while collaborating effectively with First Nations governments on critical housing initiatives.



TLA'AMIN NATION



BARGE DELIVERY



EXCAVATION AND FOUNDATION



INSTALLATION



FINISHED DEVELOPMENT

Project Type: Complex Care Housing

- Scope: Construction of 4 self-contained housing units
- Location: Tla'amin Nation territory
- Start Date: November 2024
- Completion Date: March 7, 2025

Project Details:

- 4 self-contained units
- Designed for individuals with complex care needs
- Strategically located for easy access to essential services

Strategic Location:

The units are situated to provide residents with improved access to:

- Transportation routes
- Work opportunities
- Schools
- Health care facilities
- Recreational amenities

Partnerships:

- Arcwell Developments is working in collaboration with Tla'amin Nation (primary client)
- Vancouver Coastal Health (operations partner)
- SRI Homes (Manufacturer)
- Various Subtrades

RECENT PROJECTS: MEMBERTOU FIRST NATION



Arcwell Developments recently completed Three (3) 6-bedroom, 2,000 sq. ft. split-entry homes for Membertou First Nation in Cape Breton, NS.

The project included full design, manufacturing and delivery of the homes, along with all on-site finishing tasks, such as water and sewer connections, landscaping, driveways, and electrical, plumbing work and basement completion. In accordance with project requirements, we also integrated local community trades into the construction process, supporting local employment and skill development.

Throughout the project, we maintained close coordination with Membertou First Nation's CFO, housing manager, and their team to ensure seamless execution.



MEMBERTOU FIRST NATION



oCCUPIED 2000 SQFT SPLIT ENTRY , 2024.



TWO (2), 2000 SQFT SPLIT ENTRY IN PROGRESS, 2025.

Project Type: Residential Housing

- Scope: Construction of three 6-bedroom, 2,000 sq. ft. split-entry homes
- Location: Membertou First Nation territory
- Start Date:
- Completion Date:

Project Details:

- Three identical 6-bedroom, 2,000 sq. ft. split-entry homes
- Turn-key solution including full design, construction, and delivery

Strategic Location:

The units are situated to provide residents with improved access to:

- Access to community services
- Proximity to local amenities
- Integration with existing infrastructure

Partnerships:

- Arcwell Developments is working in collaboration with: Membertou First Nation (primary client)
- Local community trades
- Membertou First Nation's CFO and housing manager

Client Satisfaction:

Due to the community's satisfaction with our work on the initial unit, Arcwell Developments has been entrusted with the construction of two more identical homes, demonstrating our commitment to quality and client satisfaction.

RECENT PROJECTS: SIPEKNE'KATIK FIRST NATION



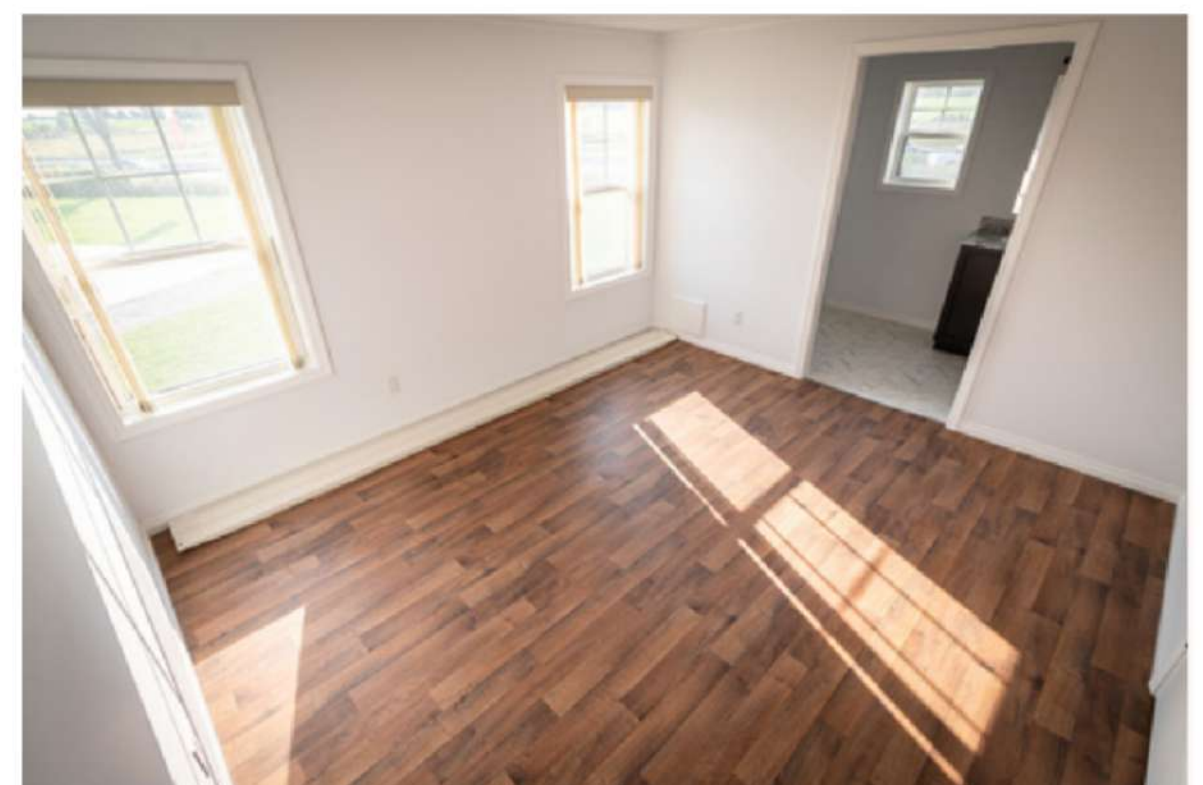
Arcwell Developments successfully completed ICF foundations for six (6) modular homes for Sipekne'katik First Nation.

The community was in a difficult situation, struggling to complete the work and facing high storage fees while the homes sat unfinished. With a strict deadline threatening the loss of funding, we mobilized an emergency team during the dead of winter.

Despite facing snowstorms and ice storms, we completed the foundations on time and within budget, helping the community avoid further delays and financial penalties.



PROJECT PHOTOS



AFFILIATED ORGANIZATIONS



WORK SAFE. FOR LIFE.
WORKERS' COMPENSATION BOARD OF NOVA SCOTIA





THANK YOU

www.arcwellddevelopments.com

info@arcwellddevelopments.com