



A PROJECT OF  
FIRSTBLISS ENTERPRISES PRIVATE LIMITED

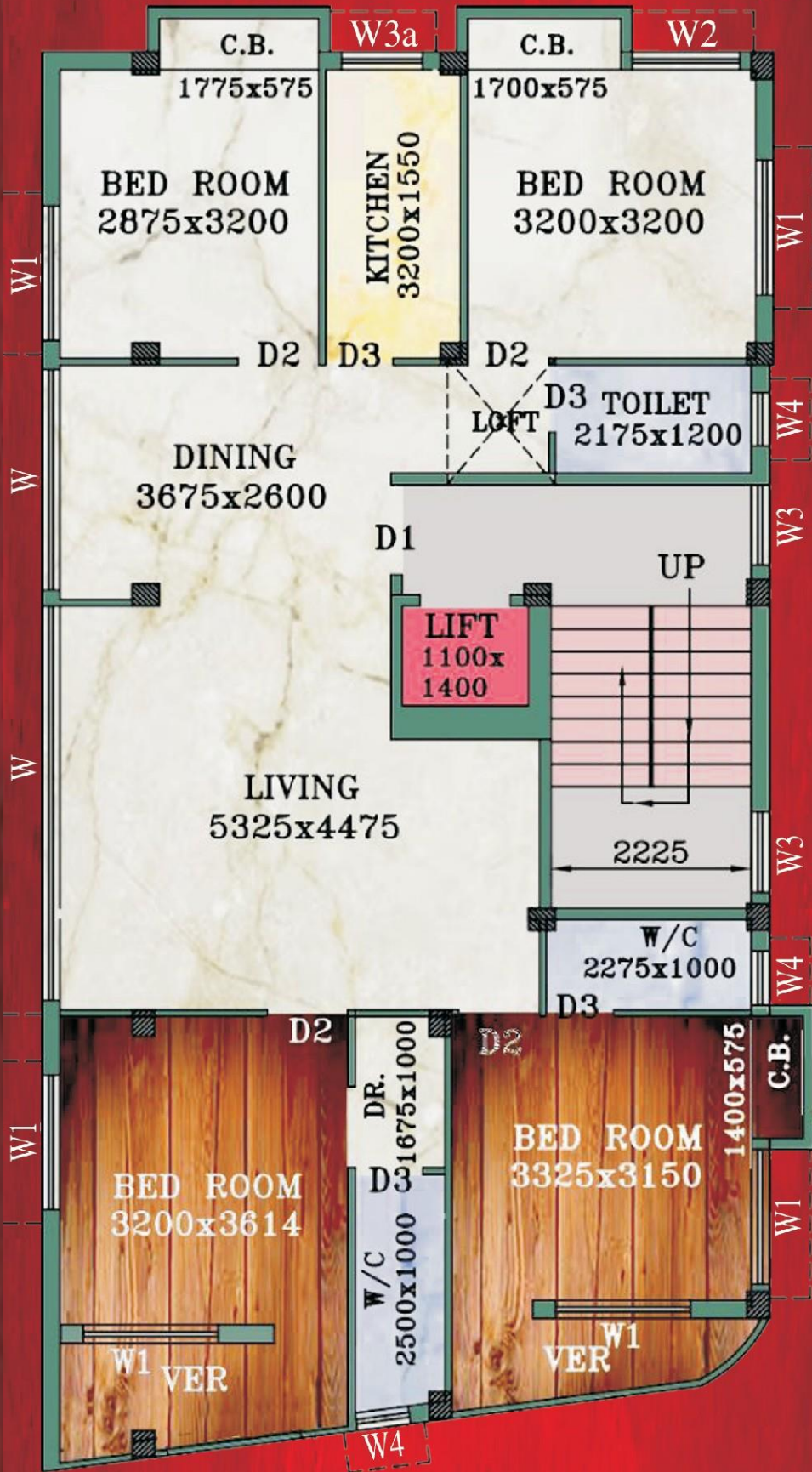
# RAAJ ELITE

*We build happy homes...*



**Typical Floor Plan of 1st, 2nd, 3rd & 4th Floor :**

1872 SQ.FT.



Premises No (41)

**Furniture layout of 1st, 2nd, 3rd & 4th Floor :**

1872 SQ.FT.



Premises No (41)





# RAAJ ELITE



**Close Proximity**

Nearest Metro Station

MP Birla School

RP Goenka International School

New Alipore

2 kms/9 mins

3 kms/12 mins

5 kms/15 mins

3 kms/9 mins



# SPECIFICATIONS

## COMMON AMENITIES

- Equipped with Split ACs in the rooms.
- Well decorated lobby.
- 24 hrs water supply.
- Common toilet for service staff.
- LED illumination for compound & staircases.

## COMMON AREAS

- 4 passenger Lift.
- CCTV Cameras.
- Waterproof non-fading exterior finish.
- Underground covered water drainage system.
- Free Interior Design advice.
- Guidance for Loan Facility.
- Decorative Lift Lobby.

## STRUCTURE

- Earthquake resistant RCC framed structure with premium quality steel & cement.
- ACC company concrete brick for external & internal walls.

## DOOR & WINDOW

- Sal wood frame.
- Full size windows.
- Solid core ISI Water Proof Flush Door.
- Flush Door for Toilets.
- Color Coated Aluminum Sliding Windows for all rooms.
- Louver for all toilets.

## TOILET

- Anti-skid/ Matte finish ceramic tiled floor.
- Dado designed ceramic wall tiles up to door heights.
- White sanitary ware of (JAQUAR or CERA).
- Reputed CP Fittings and provisions for geyser, exhaust fan (JAQUAR or CERA).
- Plumbing provision for hot & cold lines with CPVC pipes.

## PAINT

- Wall Care Putty for in-side Wall & Ceiling.
- The interior of common space:- Primer & best Quality Washable Paint.
- Exterior:- High-quality waterproof Cement/texture paint with putty on facade.

## FLOORING

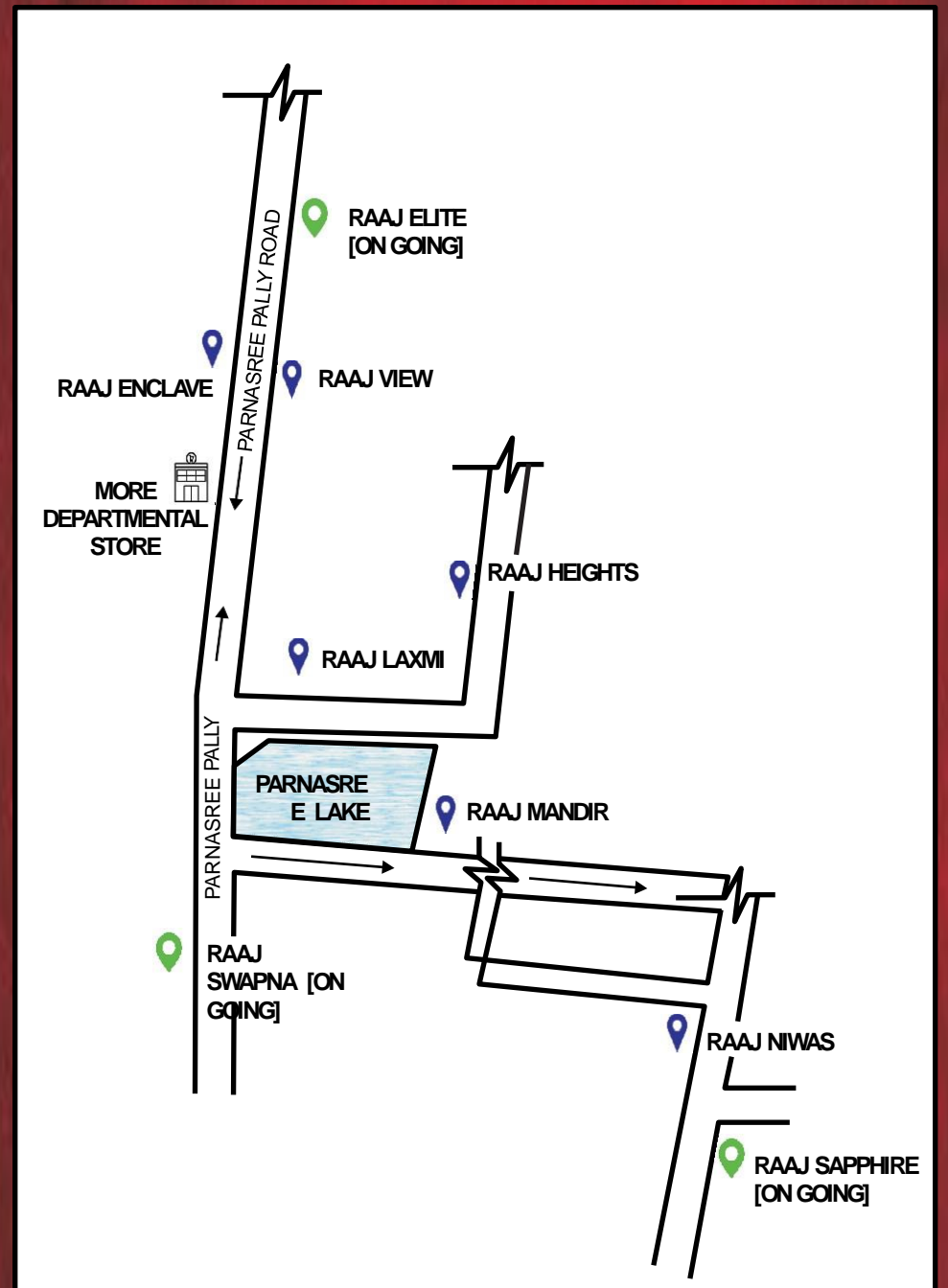
- Internal Flooring: Double glazed Vitrified Tiles in Bedrooms (4'x2') , Living & Dining, wooden tiles in Master Bedroom, (4'x2') Stair & lift lobby with Marble.
- Anti Skid Ceramic Floor Tiles in Kitchen & Toilet.
- External Flooring: Parking Tiles/Paver Block in Driveway, Garage.

## ELECTRICALS

- Modular switches of reputed make.
- AC points in all rooms and for Living/Dining.
- Necessary electrical points with switches in all bedrooms, Living / Dining, Kitchen, and Toilets
- Concealed copper wiring with Central MCB of reputed make.

## KITCHEN

- Stainless steel sink.
- Dado of ceramic tiles up to 2.5 feet above the counter.
- Granite Kitchen Counter.
- Sufficient power point for Electrical Fixtures.
- Reputed C.P.Fittings of (JAQUAR or CERA).



*And many more...*





*We build happy homes...*

# FIRSTBLISS ENTERPRISES PRIVATE LIMITED

**Address:** 312 Parnasree Pally, Ground Floor,  
Kolkata-700060

**Contact No.:** +91-7278744497  
+91-9830927979  
+91-9038930468