



FIRSTBLISS ENTERPRISES PRIVATE LIMITED



FIRSTBLISS ENTERPRISES PRIVATE LIMITED

Project Address :

516 & 517 Parnasree Pally

Corporate Address :

312 Parnasree Pally

Contact No. :

72787 44497

98309 27979

90389 30468

Website :

<https://Firstblissenterprises.com/>

RAAJ PARADISE

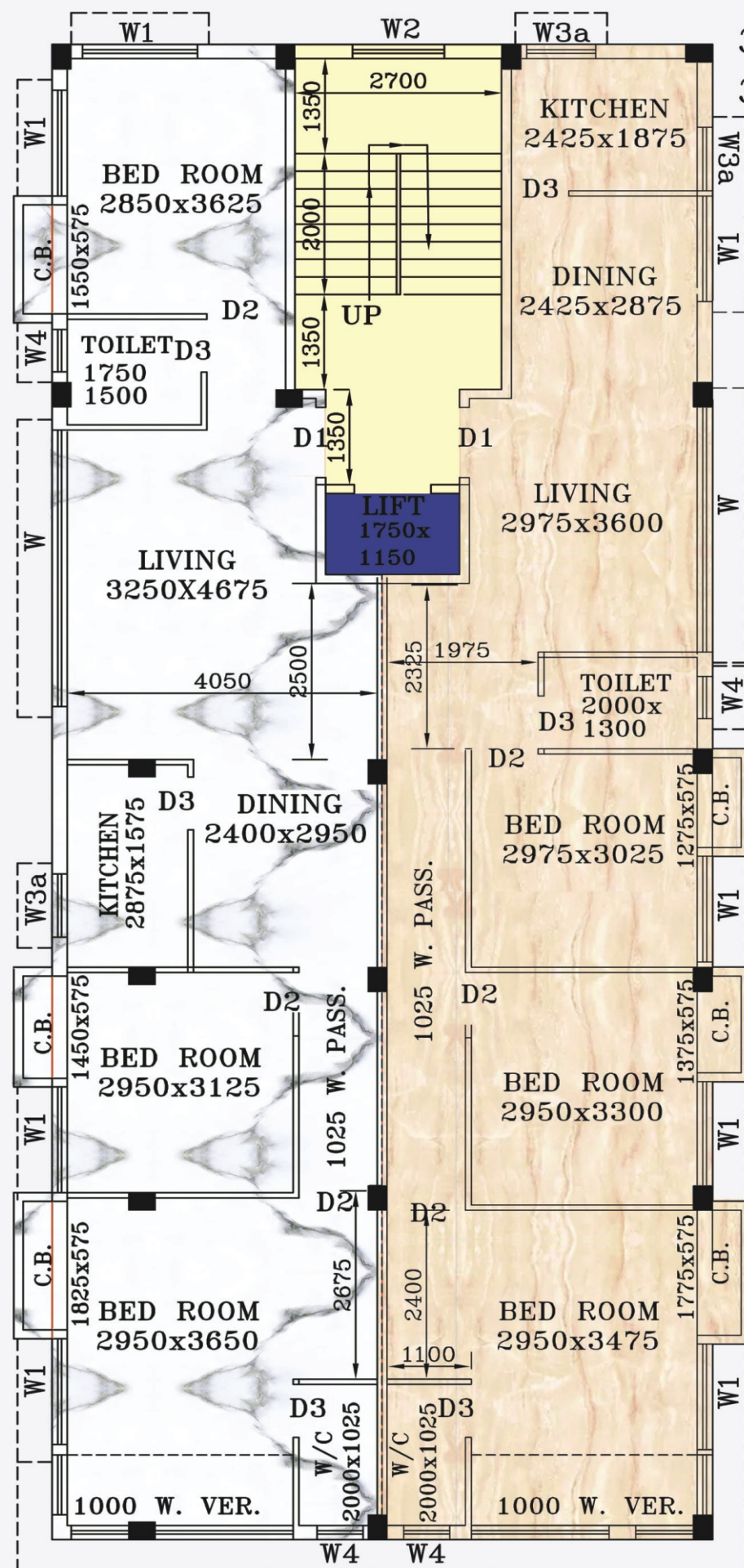
Disclaimer :

This brochure is not a legal document nor a legal offering. It only describes the intent, purpose and the concept of 'RAAJ PARADISE'.

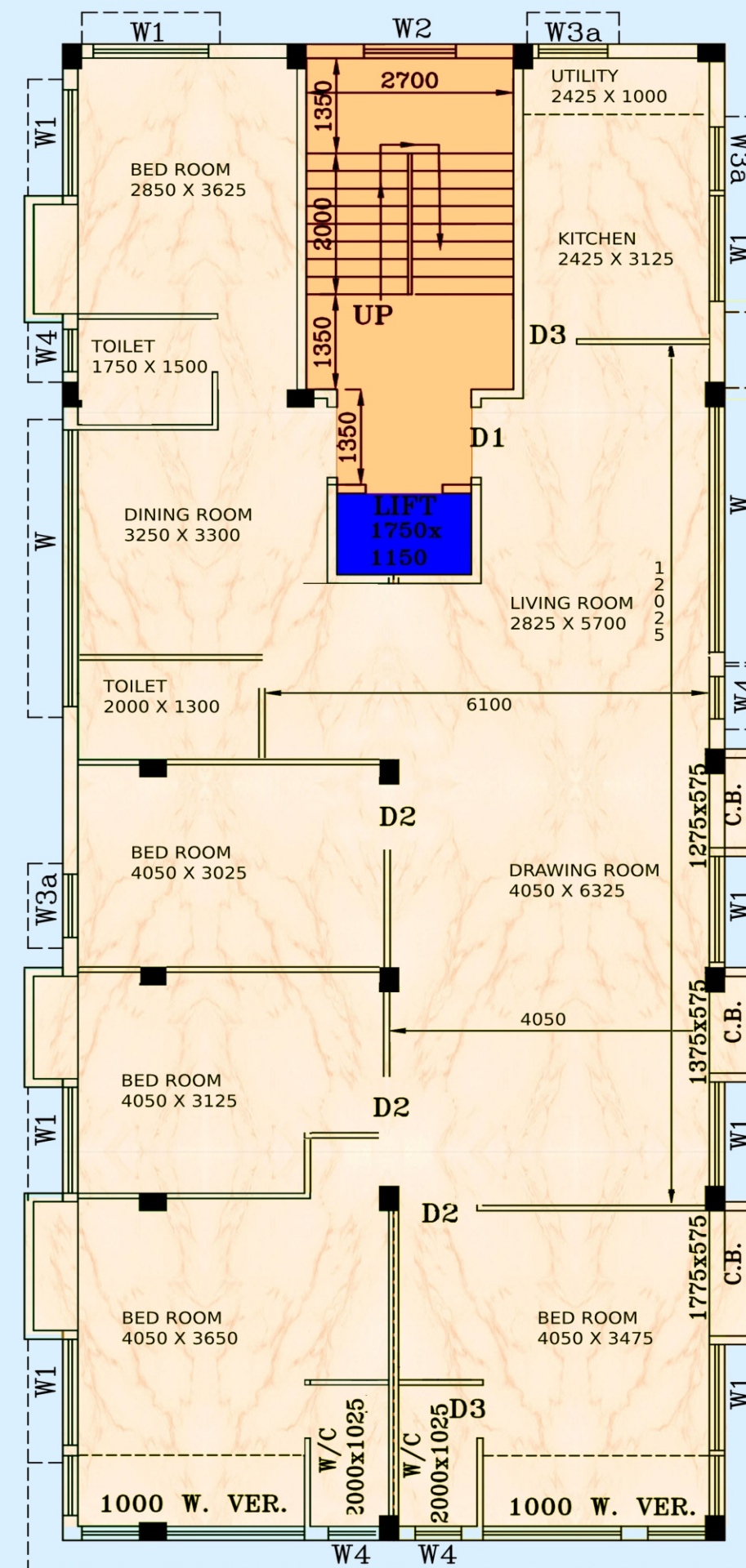
We build happy homes...

Live the Luxury, Feel the Belonging.

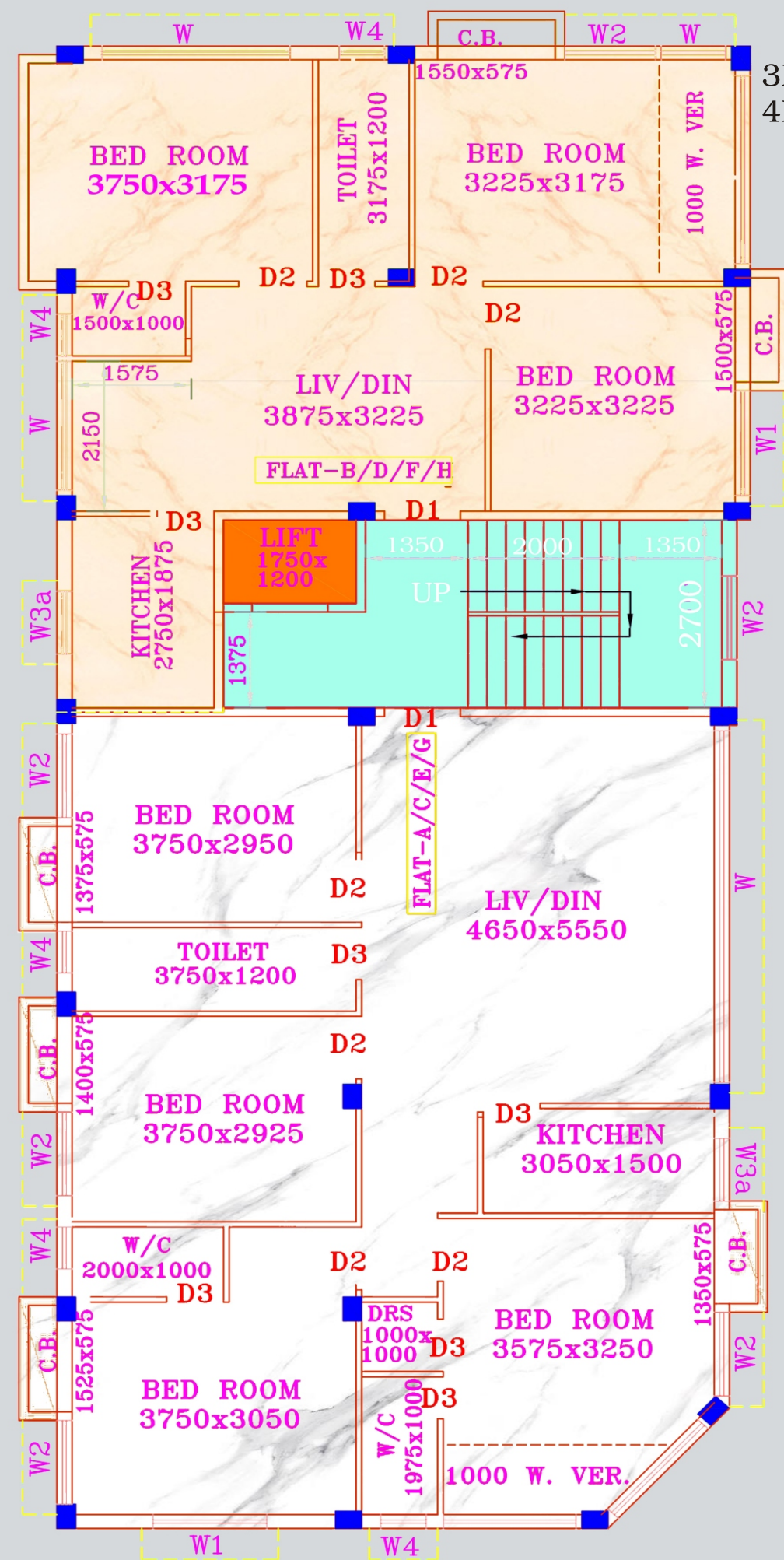
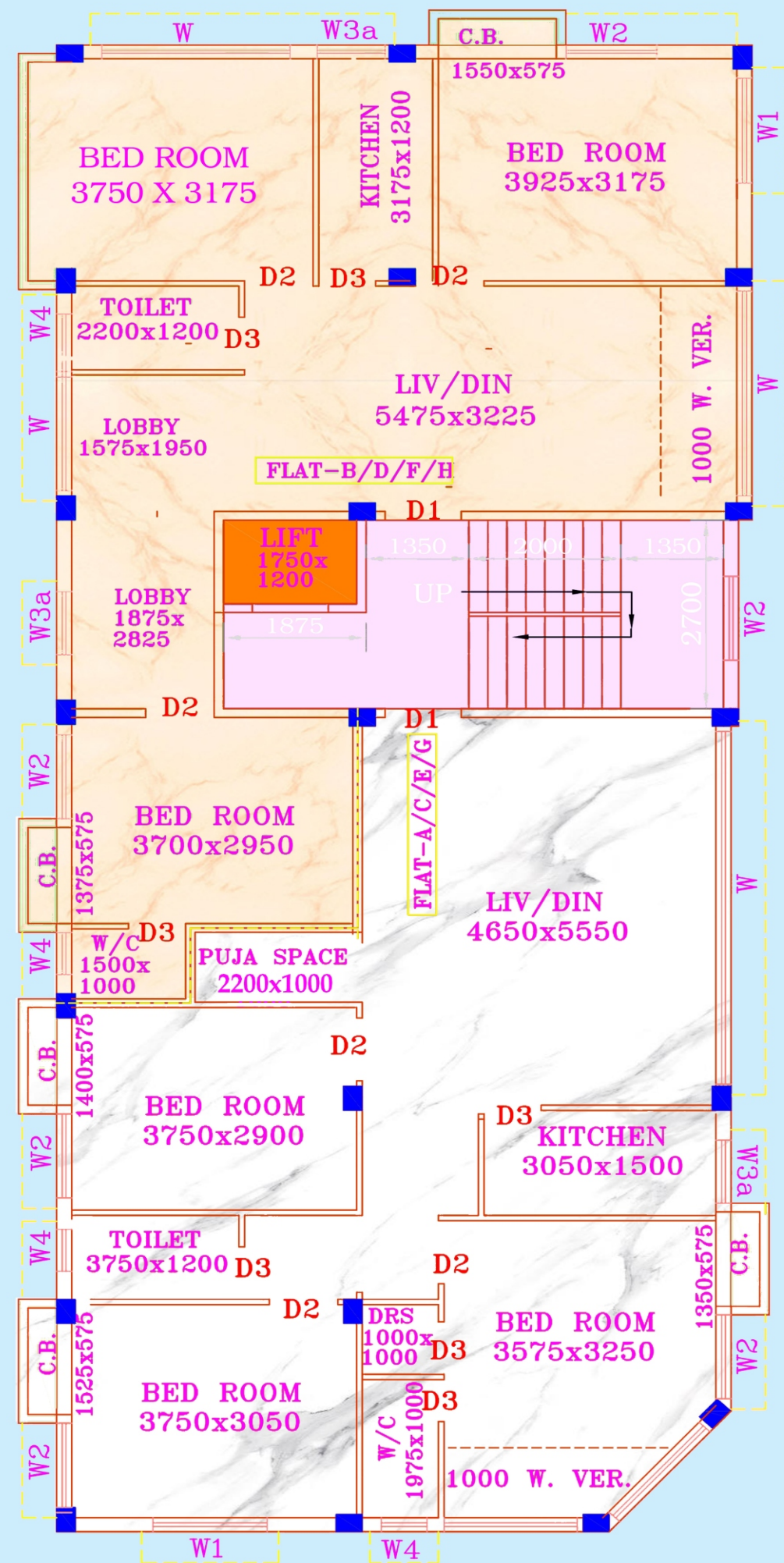




3 BHK : 1458 Sqft.
3 BHK : 1386 Sqft.



5BHK : 2844 Sqft.





Specifications

COMMON AMENITIES

- Equipped with Split ACs
- Common toilet for service staff & Security Room
- 4 passenger Lift & CCTV Cameras in the compound

STRUCTURE

- Earthquake resistant RCC framed structure
- ACC company concrete brick for external & internal walls.

DOOR & WINDOW

- Water-Proof Flush Doors
- Color Coated Full size Aluminum Sliding Windows
- Louver for all toilets.

TOILET

- Anti-skid/ Matte finish ceramic tiled floor.
- White sanitary ware of (JAQUAR or CERA)
- Provisions for geyser & hot & cold lines (chargeable)

PAINT

- Wall Care Putty for inside Wall & Ceiling.
- The interiors :- Primer & best Quality Washable Paint.
- Exterior:- High-quality waterproof paint with putty on facade

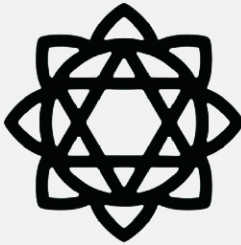
FLOORING

- (4' x2') Tiles in Bedrooms & Living & Dining, wooden tiles in Master Bedroom
- (4' x2') Stair & lift lobby with Marble.
- Parking Tiles/Paver Block in Driveway, Garage.

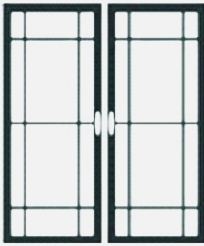
KITCHEN

- Stainless steel sink.
- Dado of ceramic tiles up to 2.5 feet above the counter.
- Engineered stone Kitchen Counter.

Features



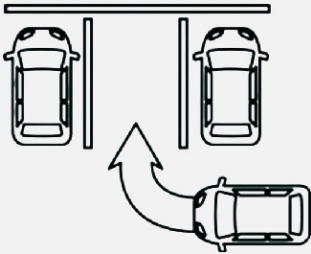
VASTU COMPLIANT DESIGN



FRENCH WINDOWS



TERRACE PERGOLA



INDEPENDENT PARKING



Terrace of Tranquility

About Us



FIRSTBLISS ENTERPRISES PRIVATE LIMITED

The story of FirstBliss Enterprises is the success formula of all its endeavors ever since its inception a couple of decades back. Each of its projects has staked a monumental name with regards to liveability and aesthetics. The group's architectural wonders leave a first and lasting impression in the minds of even the most fastidious buyers due to its scenic locations, magnificence of space, proximity to utility services, adhering to the dictates of the eco-friendly norms.

Our Projects

