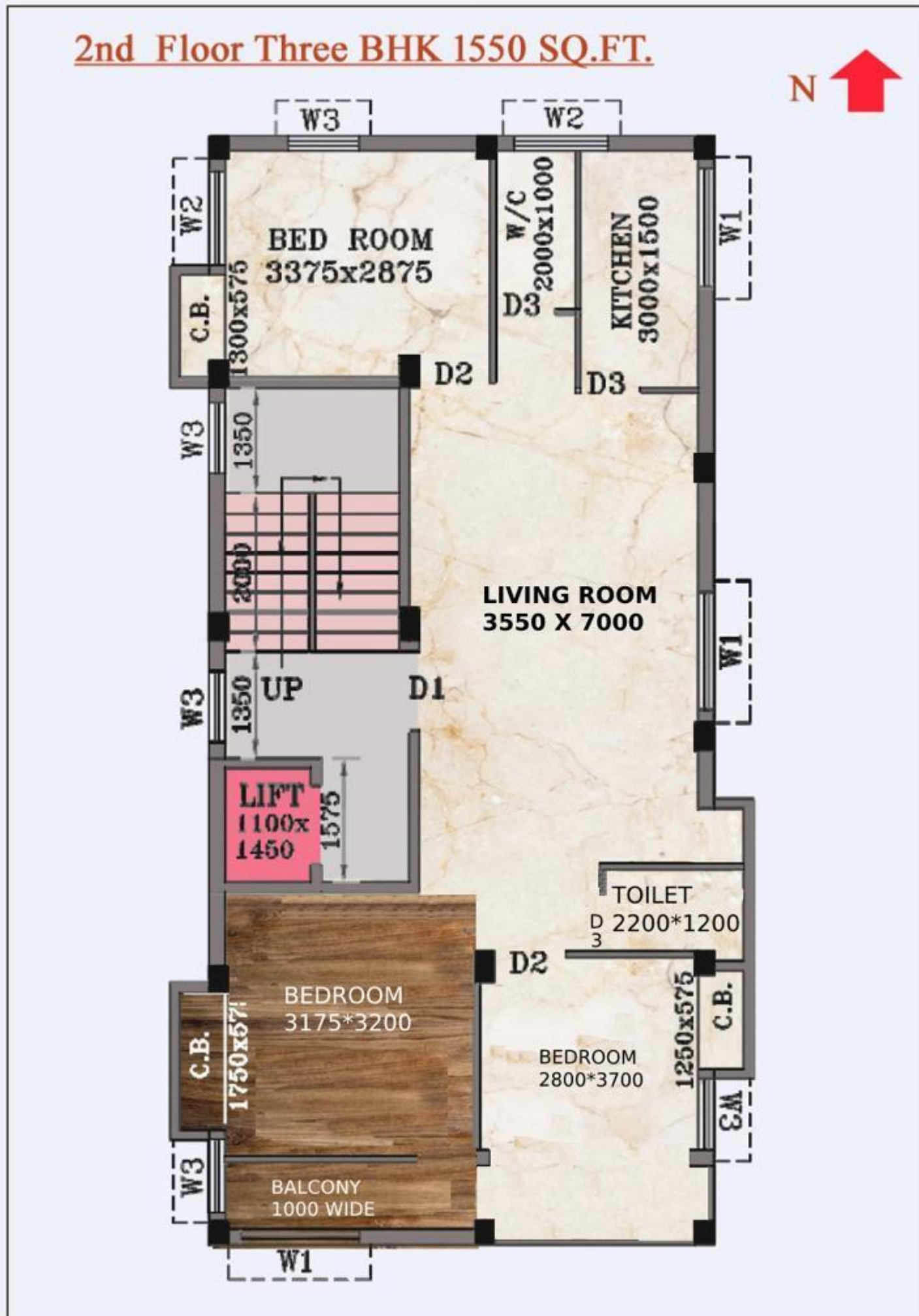


A PROJECT OF  
FIRSTBLISS ENTERPRISES PRIVATE LIMITED

# RAAJ PEARLS

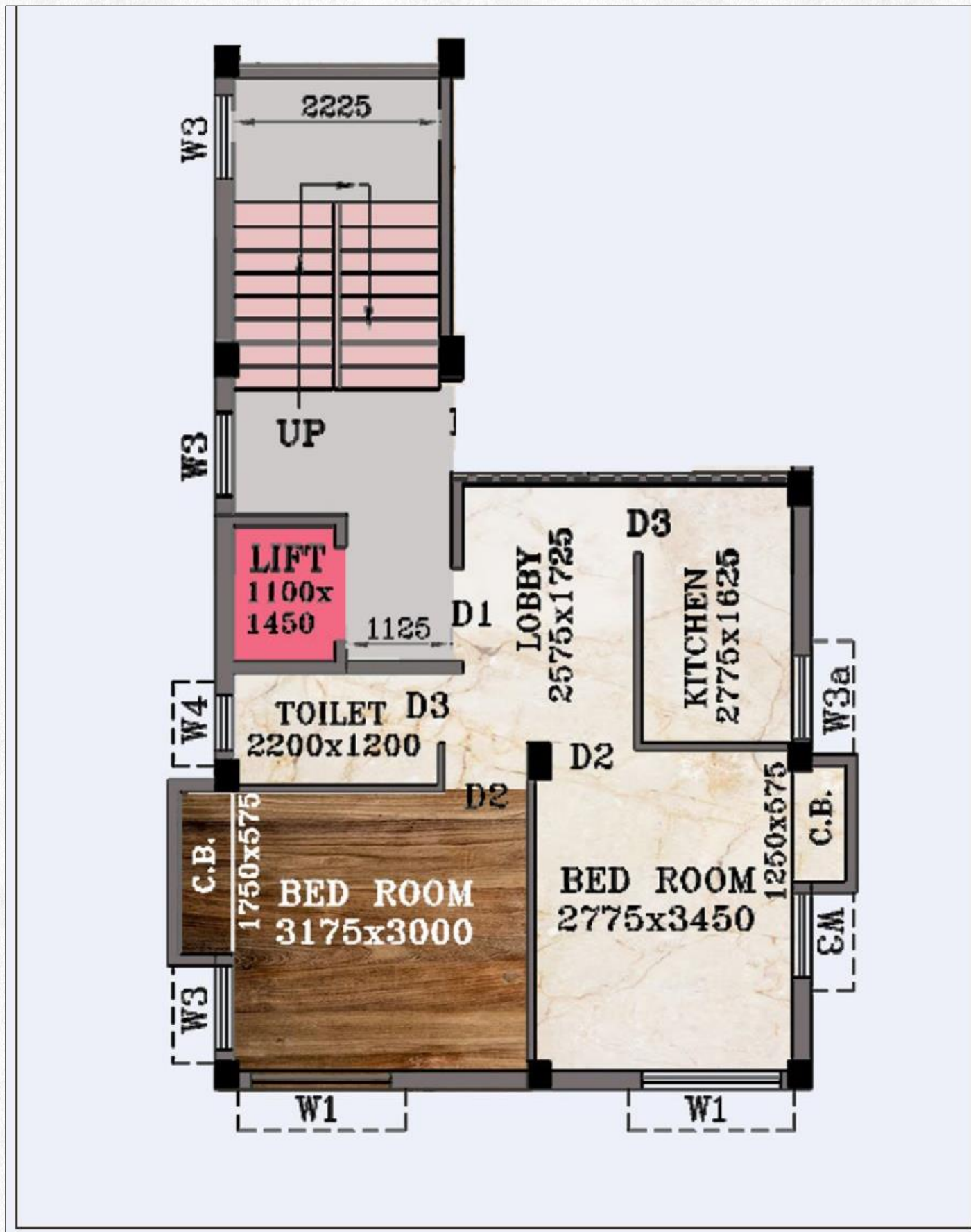
*We build happy homes...*

# TYPICAL FLOOR PLAN OF 2<sup>ND</sup> FLOOR



1550 SQUARE FEET

# TYPICAL FLOOR PLAN OF GROUND & 3<sup>RD</sup> FLOOR



775 SQUARE FEET

87 B , Jyotish Roy Road  
Consultant : Mr. Animesh Guria  
Designed by : Mr. Aritra Majumder  
9007951793



# RAAJ PEARLS



## Close Proximity

<b>B.P Poddar Hospital</b>	<b>1.6kms /5mins</b>
<b>Sri Sri Academy</b>	<b>51.8kms/6 mins</b>
<b>South City Mall</b>	<b>3.5 kms/10 mins</b>

# SPECIFICATIONS

## COMMON AMENITIES

- Well decorated lobby
- 24 hrs water supply.
- Common toilet for service staff.
- LED illumination for compound & staircases.

## COMMON AREAS

- 4 passenger Lift.
- CCTV Cameras
- Waterproof non-fading exterior finish.
- Underground covered water drainage system.
- Free Interior Design advice.
- Guidance for Loan Facility.
- Decorative Lift Lobby.

## STRUCTURE

- Earthquake resistant RCC framed structure with premium quality steel & cement.
- ACC company concrete brick for external & internal walls.

## DOOR & WINDOW

- Sal wood frame.
- Full size windows
- Solid core ISI Water Proof Flush Door.
- Flush Door for Toilets.
- Color Coated Aluminum Sliding Windows for all rooms.
- Louver for all toilets.

## TOILET

- Anti-skid/ Matte finish ceramic tiled floor.
- Dado designed ceramic wall tiles up to door heights.
- White sanitary ware of (JAQUAR or CERA)
- Reputed CP Fittings and provisions for geyser, exhaust fan (JAQUAR or CERA)
- Plumbing provision for hot & cold lines with CPVC pipes.

## PAINT

- Wall Care Putty for in-side Wall & Ceiling.
- The interior of common space:- Primer & best Quality Washable Paint.
- Exterior:- High-quality waterproof Cement/texture paint with putty on facade

## FLOORING

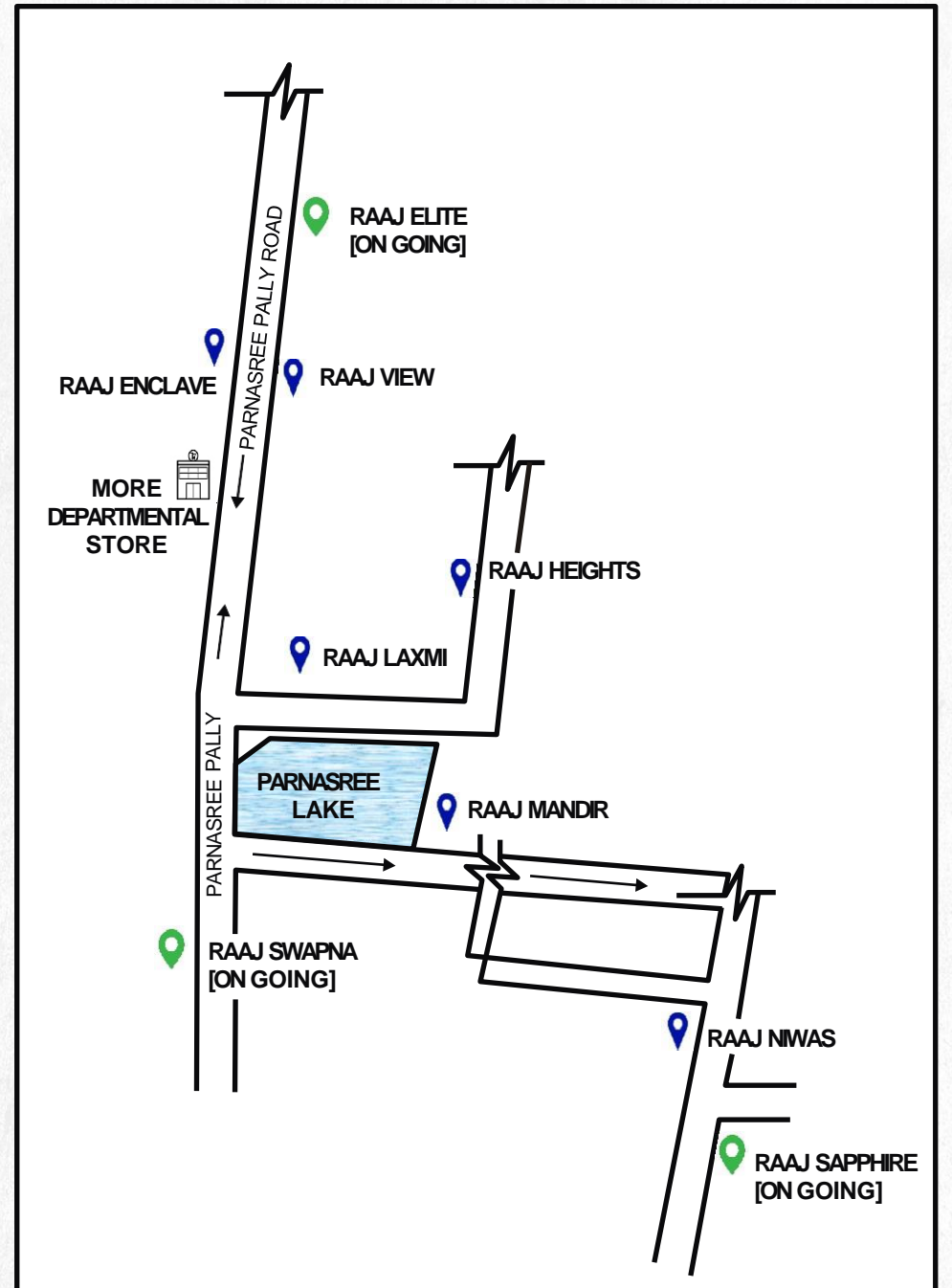
- Internal Flooring: Double glazed Vitrified Tiles in Bedrooms (4'x2') , Living & Dining, wooden tiles in Master Bedroom, (4'x2') Stair & lift lobby with Marble.
- Anti Skid Ceramic Floor Tiles in Kitchen & Toilet
- External Flooring: Parking Tiles/Paver Block in Driveway, Garage.

## ELECTRICALS

- Modular switches of reputed make.
- AC points in all rooms and for Living/Dining.
- Necessary electrical points with switches in all bedrooms, Living/ Dining, Kitchen, and Toilets
- Concealed copper wiring with Central MCB of reputed make.

## KITCHEN

- Stainless steel sink.
- Dado of ceramic tiles up to 2.5 feet above the counter.
- Granite Kitchen Counter.
- Sufficient power point for Electrical Fixtures.
- Reputed C.P.Fittings of (JAQUAR or CERA)



*And many more...*



# **FIRSTBLISS ENTERPRISES PRIVATE LIMITED**

**Address:** 312 Parnasree Pally, Ground Floor, Kolkata-700060

**Contact No.:** +91-7278744497  
+91-9830927979  
+91-9038930468