



FIRSTBLISS ENTERPRISES PRIVATE LIMITED

RAAJ PLATINA

We build happy homes...

About Us

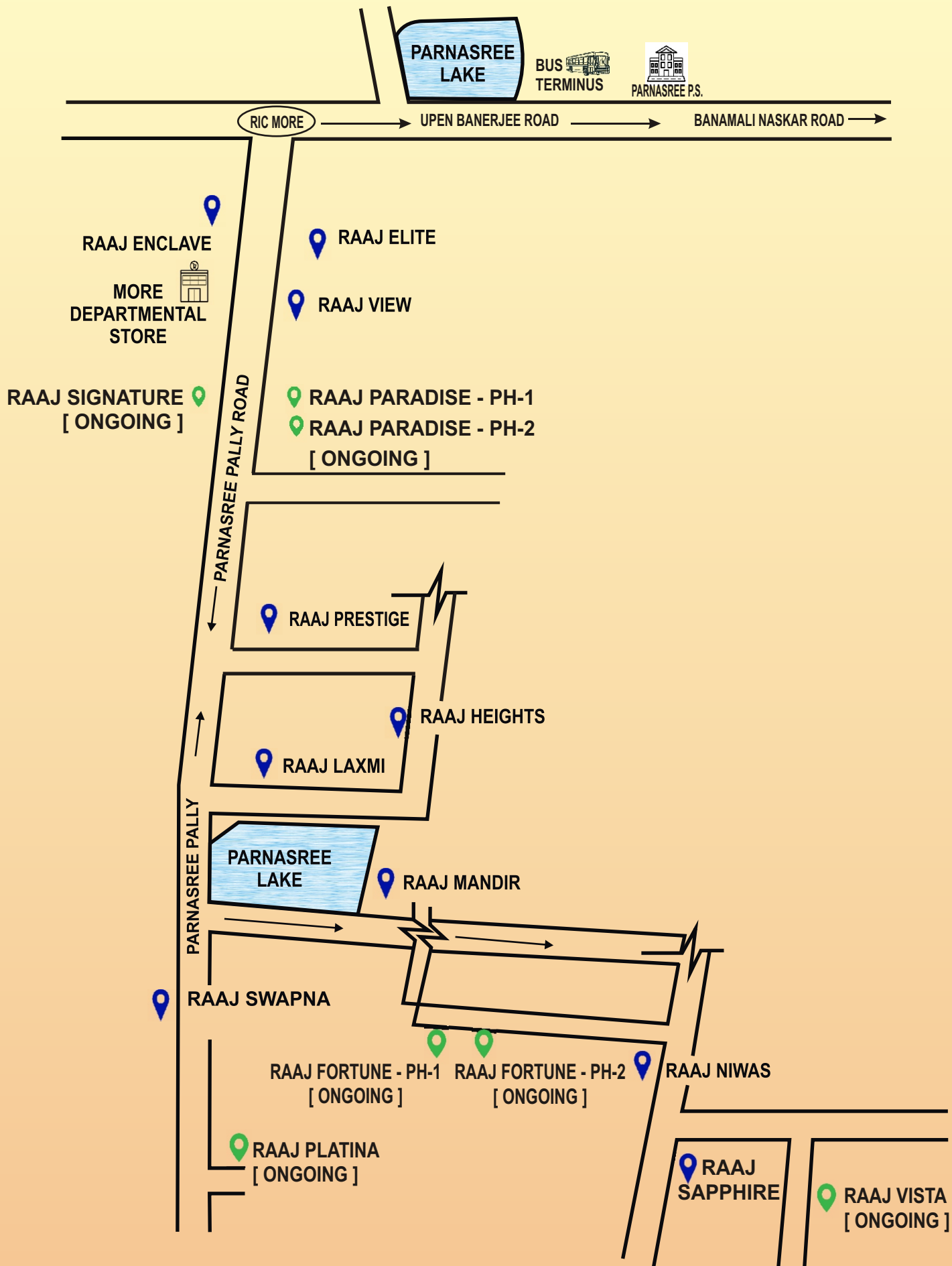


FIRSTBLISS ENTERPRISES PRIVATE LIMITED

The story of FirstBliss Enterprises is the success formula of all its endeavors ever since its inception a couple of decades back. Each of its projects has staked a monumental name with regards to liveability and aesthetics. The group's architectural wonders leave a first and lasting impression in the minds of even the most fastidious buyers due to its scenic locations, magnificence of space, proximity to utility services, adhering to the dictates of the eco-friendly norms.

Our Projects





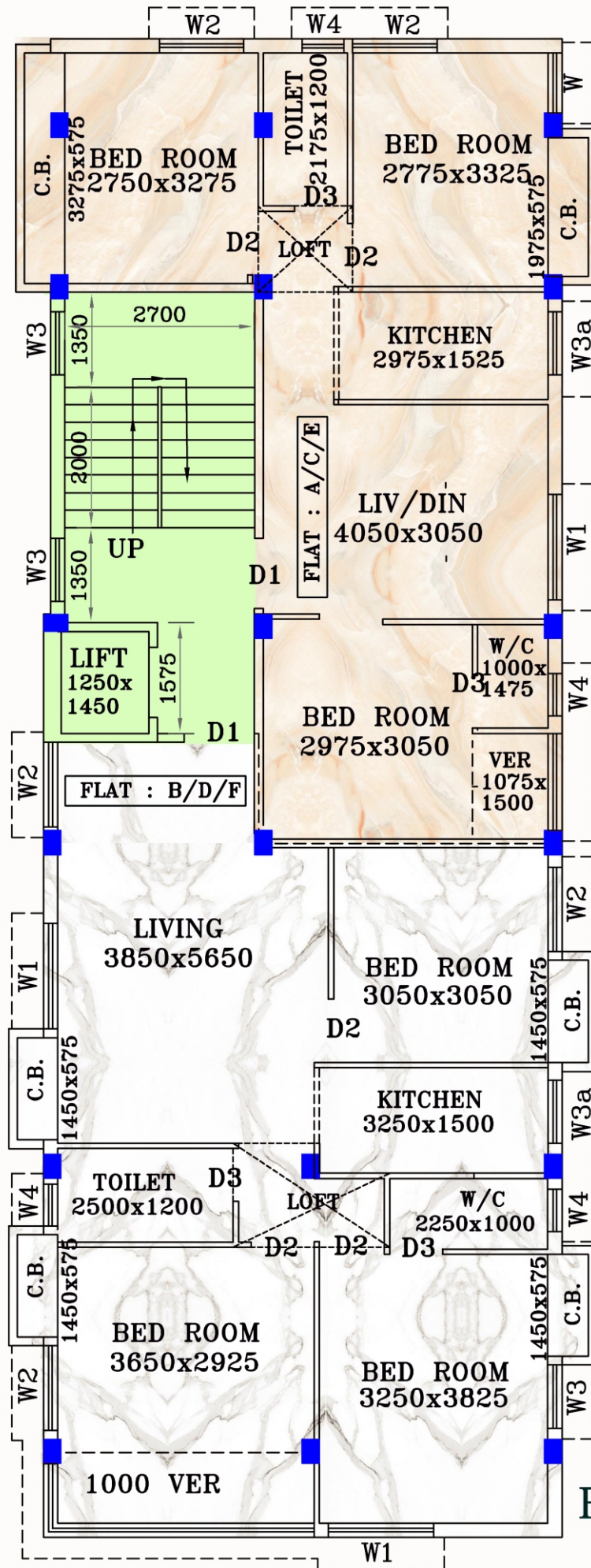
And many more...



A Peaceful Oasis



(G+III)



3 BHK : 1449 Sqft.
3 BHK : 1071 Sqft.

RAAJ PLATINA



Specifications

COMMON AMENITIES

- Equipped with Split ACs
- Common toilet for service staff & Security Room
- 4 passenger Lift & CCTV Cameras in the compound

STRUCTURE

- Earthquake resistant RCC framed structure
- ACC company concrete brick for external & internal walls.

DOOR & WINDOW

- Water-Proof Flush Doors
- Color Coated Full size Aluminum Sliding Windows
- Louver for all toilets.

TOILET

- Anti-skid/ Matte finish ceramic tiled floor.
- White sanitary ware of (JAQUAR or CERA)
- Provisions for geyser & hot & cold lines (chargeable)

PAINT

- Wall Care Putty for inside Wall & Ceiling.
- The interiors :- Primer & best Quality Washable Paint.
- Exterior:- High-quality waterproof paint with putty on facade

FLOORING

- (4'x2') Tiles in Bedrooms & Living & Dining, wooden tiles in Master Bedroom
- (4' x 2') Stair & lift lobby with Marble.
- Parking Tiles/Paver Block in Driveway, Garage.

KITCHEN

- Stainless steel sink.
- Dado of ceramic tiles up to 2.5 feet above the counter.
- Engineered stone Kitchen Counter.

COMMON AREAS

- Waterproof non-fading exterior finish.
- Guidance for Loan Facility.

ELECTRICALS

- Modular switches of reputed make.
- AC points in all rooms and for Living/Dining.
- Concealed copper wiring with Central MCB of reputed make.



FIRSTBLISS ENTERPRISES PRIVATE LIMITED

Project Address :

227 Parnasree Pally



Corporate Address :

312 Parnasree Pally

Contact No. :

72787 44497

98309 27979

90389 30468

Website :

<https://Firstblissenterprises.com/>

Disclaimer :

This brochure is not a legal document nor a legal offering. It only describes the intent, purpose and the concept of 'RAAJ PLATINA'.