

A PROJECT OF
FIRSTBLISS ENTERPRISES PRIVATE LIMITED

RAAJ PRESTIGE

We build happy homes...



51, PARNASREE

RAAJ PRESTIGE

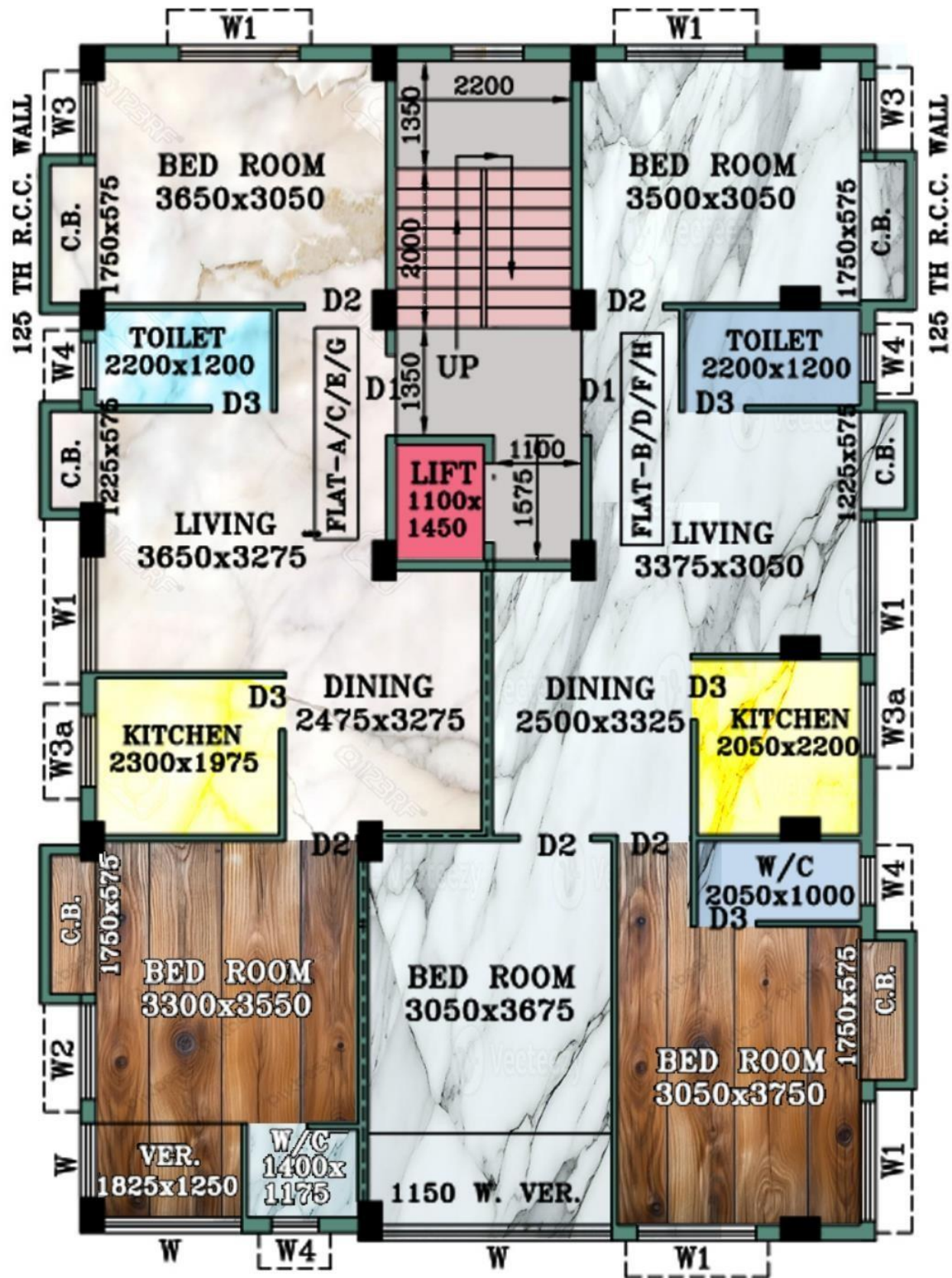


Close Proximity

Nearest Metro Station	2 kms/09 mins
B.P Poddar Hospital	3 kms/12 mins
RP Goenka International School	5 kms/15 mins
New Alipore	3 kms/09 mins

3BHK : 1368 SQ.FT

2BHK : 1060 SQ.FT



TYPICAL FLOOR PLAN
(FIRST, SECOND, THIRD & FOURTH)

SPECIFICATIONS

COMMON AMENITIES

- Equipped with Split ACs in the rooms.
- Well decorated lobby.
- 24 hrs water supply.
- Common toilet for service staff.
- LED illumination for compound & staircases.

COMMON AREAS

- 4 passenger Lift.
- CCTV Cameras.
- Waterproof non-fading exterior finish.
- Underground covered water drainage system.
- Free Interior Design advice.
- Guidance for Loan Facility.
- Decorative Lift Lobby.

STRUCTURE

- Earthquake resistant RCC framed structure with premium quality steel & cement.
- ACC company concrete brick for external & internal walls.

DOOR & WINDOW

- Sal wood frame.
- Full size windows.
- Solid core ISI Water Proof Flush Door.
- Flush Door for Toilets.
- Color Coated Aluminum Sliding Windows for all rooms.
- Louver for all toilets.

TOILET

- Anti-skid/ Matte finish ceramic tiled floor.
- Dado designed ceramic wall tiles up to door heights.
- White sanitary ware of (JAQUAR or CERA).
- Reputed CP Fittings and provisions for geyser, exhaust fan (JAQUAR or CERA).
- Plumbing provision for hot & cold lines with CPVC pipes.

PAINT

- Wall Care Putty for in-side Wall & Ceiling.
- The interior of common space:- Primer & best Quality Washable Paint.
- Exterior:- High-quality waterproof Cement/texture paint with putty on facade

FLOORING

- Internal Flooring: Double glazed Vitrified Tiles in Bedrooms (4'x2') , Living & Dining, wooden tiles in Master Bedroom, (4'x2') Stair & lift lobby with Marble.
- Anti Skid Ceramic Floor Tiles in Kitchen & Toilet.
- External Flooring: Parking Tiles/Paver Block in Driveway, Garage.

ELECTRICALS

- Modular switches of reputed make.
- AC points in all rooms and for Living/Dining.
- Necessary electrical points with switches in all bedrooms, Living / Dining, Kitchen, and Toilets
- Concealed copper wiring with Central MCB of reputed make.

KITCHEN

- Stainless steel sink.
- Dado of ceramic tiles up to 2.5 feet above the counter.
- Granite Kitchen Counter.
- Sufficient power point for Electrical Fixtures.
- Reputed C.P.Fittings of (JAQUAR or CERA).



Amesh Guria
Founder
07951793





OUR PROJECTS





2 A , MAHARANI INDIRA DEVI ROAD, WARD NO : 129 ,BROUGH NO : XIV .



179, PARNASREE PALLY, KOLKATA : 700060.

OUR PROJECTS



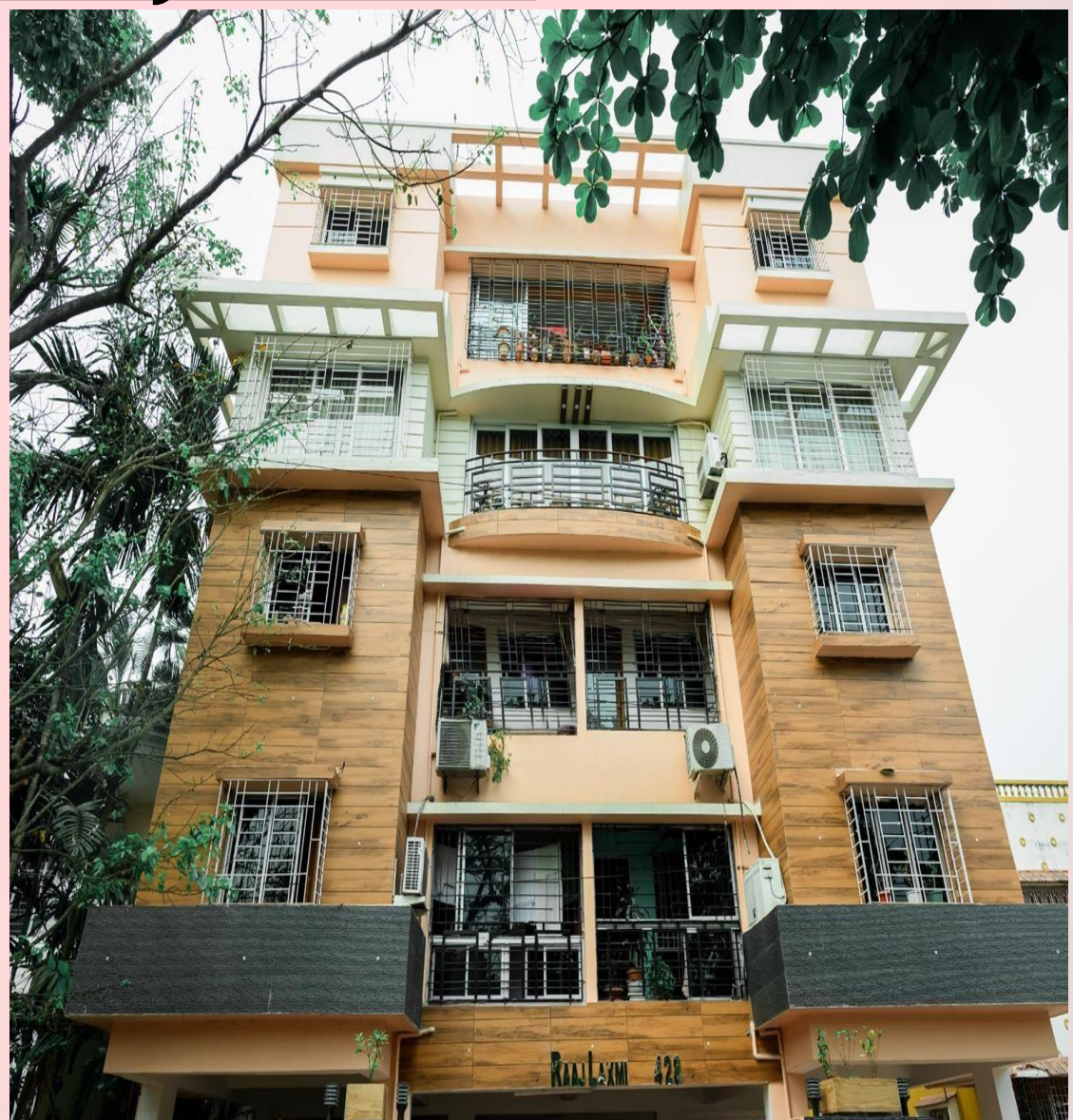
79, JYOTISH ROY ROAD, WARD NO : 117, BR. NO : XIII.

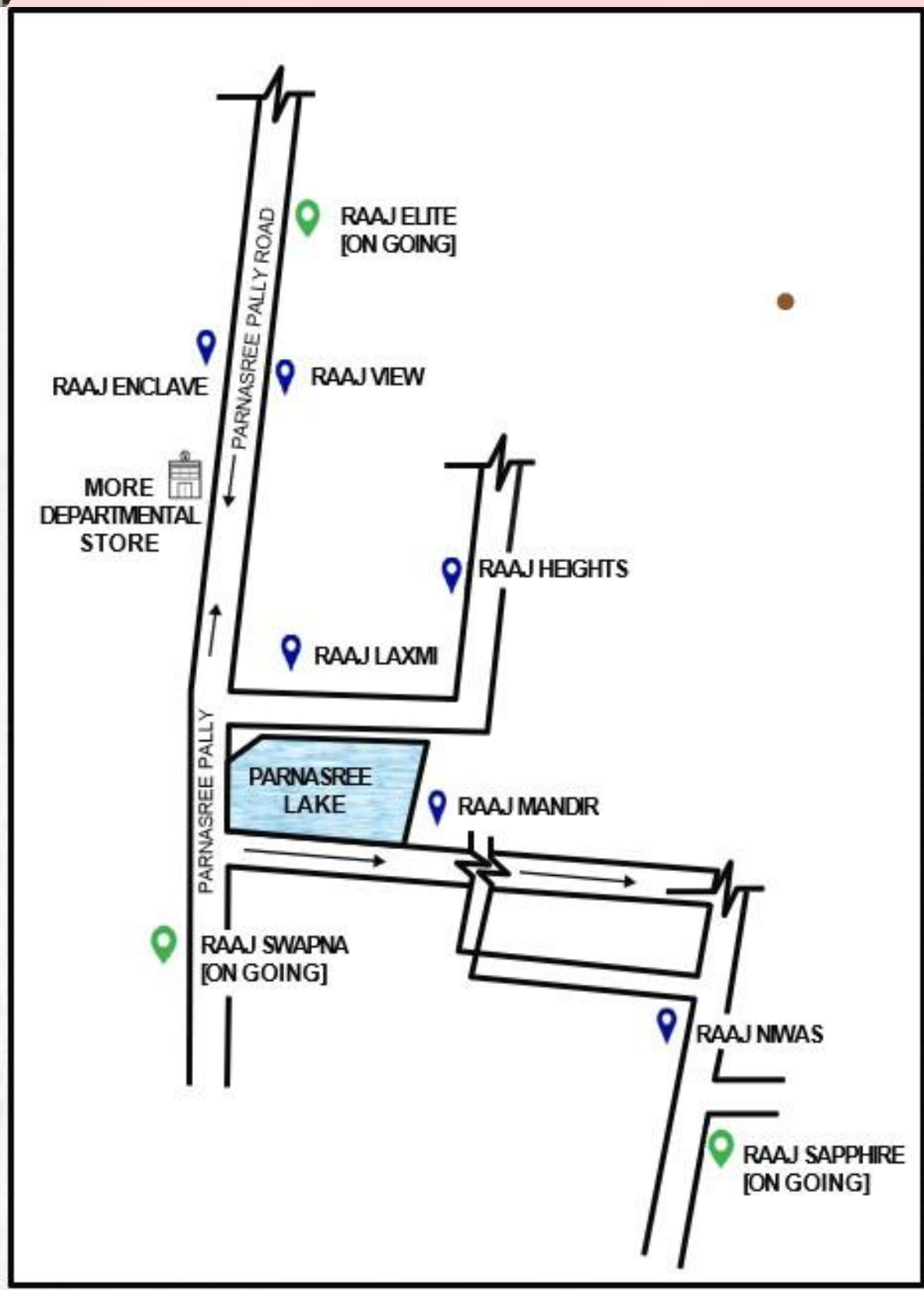


272, JYOTISH ROY ROAD, WARD : 117, KOLKATA : 700 034.



OUR PROJECTS





And many more...

FIRSTBLISS ENTERPRISES PRIVATE LIMITED

Address: 312 Parnasree Pally, Ground Floor, Kol-60

Website: <https://Firstblissenterprises.com/>

Contact No.: +91-7278744497
+91-9830927979
+91-9038930468