



A PROJECT OF
FIRSTBLISS ENTERPRISES PRIVATE LIMITED

RAAJ SAPPHIRE

We build happy homes...

CATEGORY A

Typical Plan of 1st , 2nd ,3rd & 4th Floor :

Flat A/C/E/G : 981 SQ.FT.

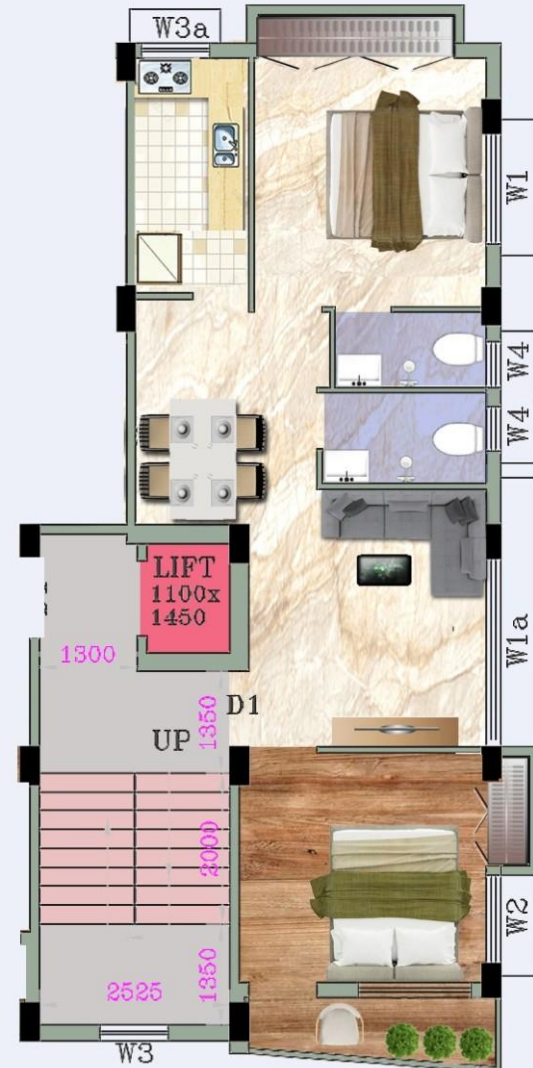


1st To 4th FLOOR PLAN
Premises No (23)

CATEGORY B

Typical Plan of 1st , 2nd ,3rd & 4th Floor :

Flat B/D/F/H : 981 SQ.FT.



1st To 4th FLOOR PLAN
Premises No (23)



RAAJ SAPPHIRE



Close Proximity

Nearest Metro Station

2 kms/9 mins

MP Birla School

3 kms/12 mins

RP Goenka International School

5 kms/15 mins

New Alipore

3 kms/9 mins

SPECIFICATIONS

COMMON AMENITIES

- Equipped with Split ACs in the rooms.
- Well decorated lobby.
- 24 hrs water supply.
- Common toilet for service staff.
- LED illumination for compound & staircases.

COMMON AREAS

- 4 passenger Lift.
- CCTV Cameras.
- Waterproof non-fading exterior finish.
- Underground covered water drainage system.
- Free Interior Design advice.
- Guidance for Loan Facility.
- Decorative Lift Lobby.

STRUCTURE

- Earthquake resistant RCC framed structure with premium quality steel & cement.
- ACC company concrete brick for external & internal walls.

DOOR & WINDOW

- Sal wood frame.
- Full size windows.
- Solid core ISI Water Proof Flush Door.
- Flush Door for Toilets.
- Color Coated Aluminum Sliding Windows for all rooms.
- Louver for all toilets.

TOILET

- Anti-skid/ Matte finish ceramic tiled floor.
- Dado designed ceramic wall tiles up to door heights.
- White sanitary ware of (JAQUAR or CERA).
- Reputed CP Fittings and provisions for geyser, exhaust fan (JAQUAR or CERA).
- Plumbing provision for hot & cold lines with CPVC pipes.

PAINT

- Wall Care Putty for in-side Wall & Ceiling.
- The interior of common space:- Primer & best Quality Washable Paint.
- Exterior:- High-quality waterproof Cement/texture paint with putty on facade.

FLOORING

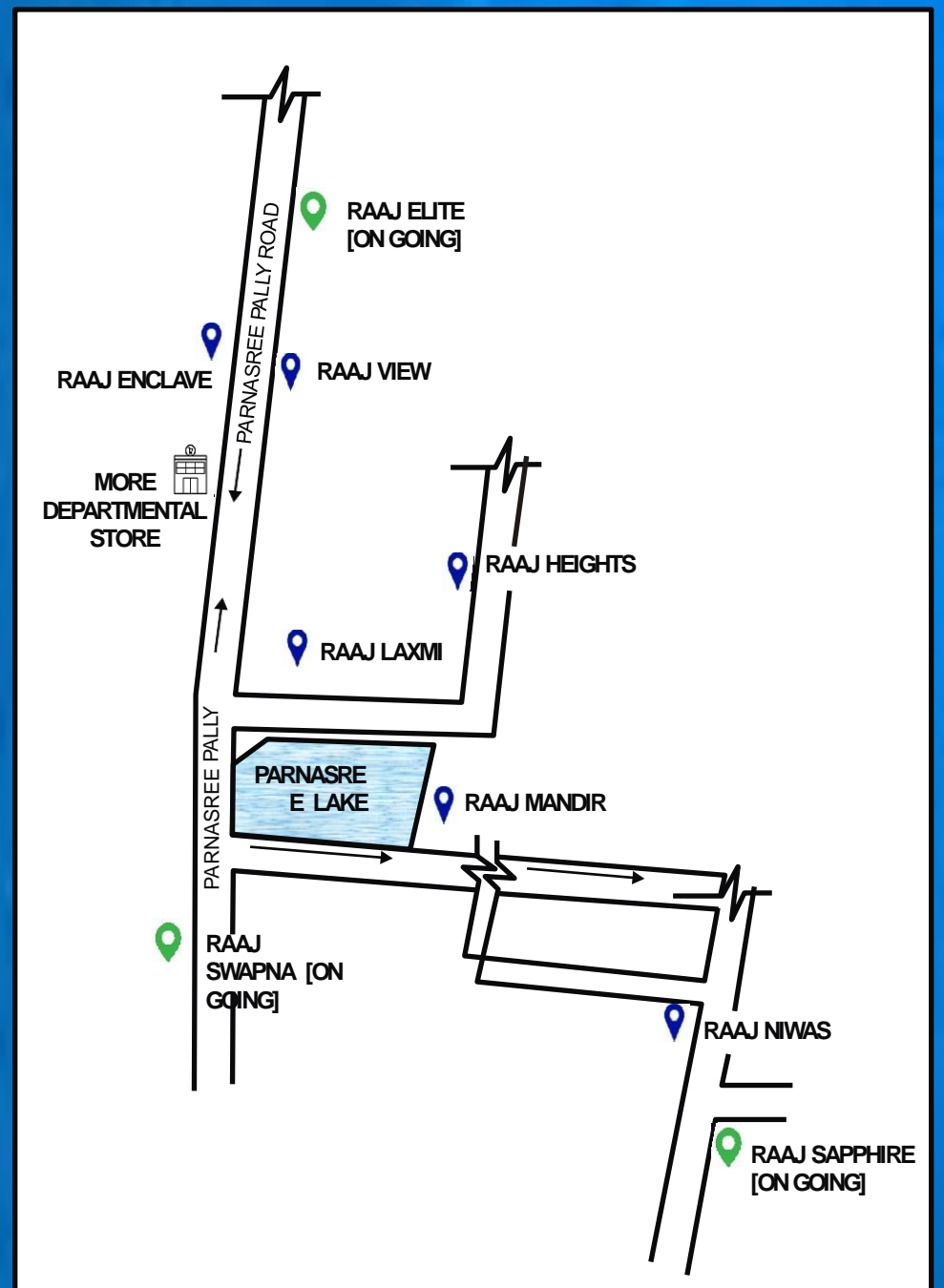
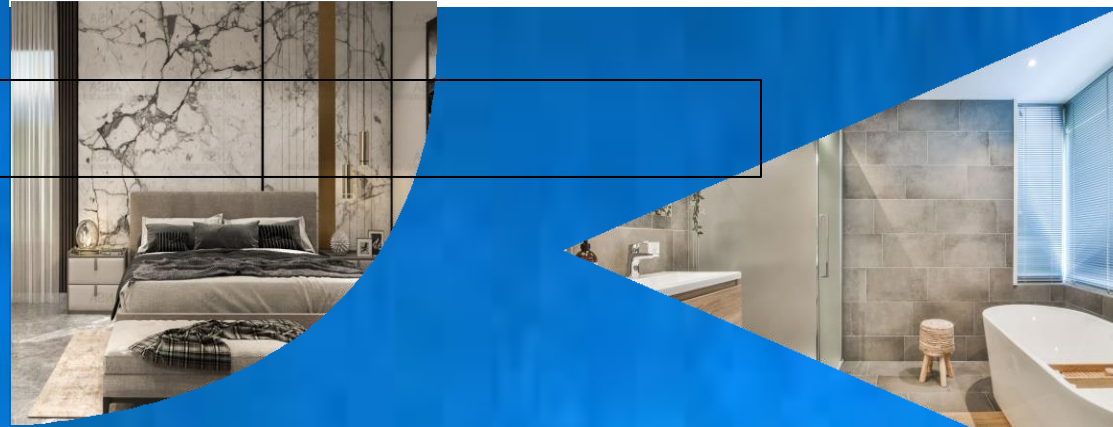
- Internal Flooring: Double glazed Vitrified Tiles in Bedrooms (4'x2') , Living & Dining, wooden tiles in Master Bedroom, (4'x2') Stair & lift lobby with Marble.
- Anti Skid Ceramic Floor Tiles in Kitchen & Toilet.
- External Flooring: Parking Tiles/Paver Block in Driveway, Garage.

ELECTRICALS

- Modular switches of reputed make.
- AC points in all rooms and for Living/Dining.
- Necessary electrical points with switches in all bedrooms, Living / Dining, Kitchen, and Toilets
- Concealed copper wiring with Central MCB of reputed make.

KITCHEN

- Stainless steel sink.
- Dado of ceramic tiles up to 2.5 feet above the counter.
- Granite Kitchen Counter.
- Sufficient power point for Electrical Fixtures.
- Reputed C.P.Fittings of (JAQUAR or CERA).



And many more...



FIRSTBLISS ENTERPRISES PRIVATE LIMITED

Address: 312 Parnasree Pally, Ground Floor, Kolkata-700060

Contact No.: +91-7278744497
+91-9830927979
+91-9038930468