



A PROJECT OF  
FIRSTBLISS ENTERPRISES PRIVATE LIMITED

# RAAJ VISTA

*We build happy homes...*

CONSULTANT : MR. ANIMESH CH GURIA  
DESIGNED BY : ARITRA MAJUMDER  
9007951793



# RAAJ VISTA

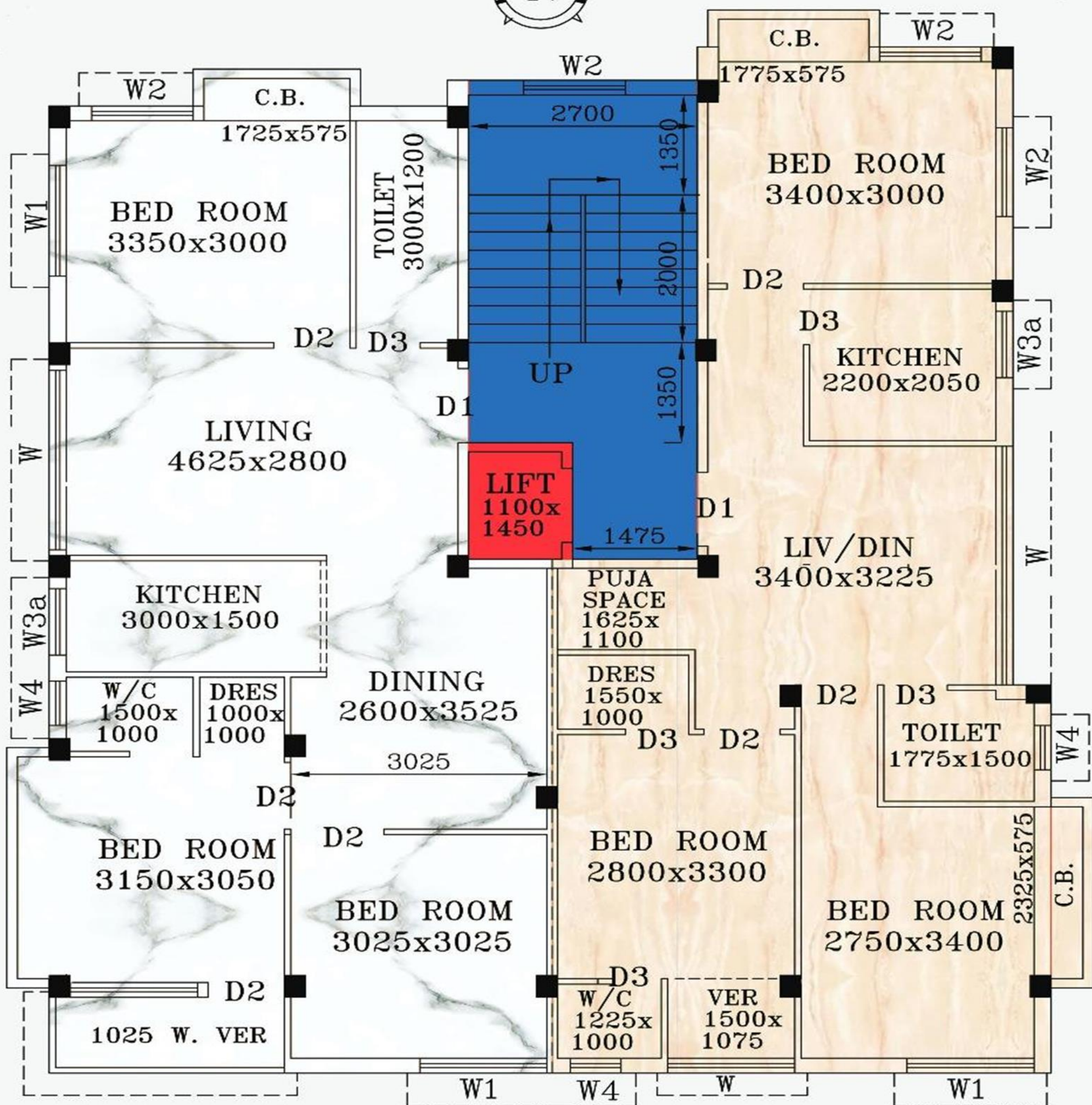


## Close Proximity

Nearest Metro Station	2kms/9 mins
B.P Poddar Hospital mins	3kms/12
RP Goenka International School mins	5 kms/15
..	
New Alipore	3 kms/9 mins



3BHK (N) : 1125 Sqft.



A. GURIA

*L.B.S. (CLASS-I) of K.M.C.*



# SPECIFICATIONS

## COMMON AMENITIES

- Equipped with Split ACs in the rooms.
- Well decorated lobby.
- 24 hrs water supply.
- Common toilet for service staff.
- LED illumination for compound & staircases.

## COMMON AREAS

- 4 passenger Lift.
- CCTV Cameras.
- Waterproof non-fading exterior finish.
- Underground covered water drainage system.
- Free Interior Design advice.
- Guidance for Loan Facility.
- Decorative Lift Lobby.

## STRUCTURE

- Earthquake resistant RCC framed structure with premium quality steel & cement.
- ACC company concrete brick for external & internal walls.

## DOOR & WINDOW

- Sal wood frame.
- Full size windows.
- Solid core ISI Water Proof Flush Door.
- Flush Door for Toilets.
- Color Coated Aluminum Sliding Windows for all rooms.
- Louver for all toilets.

## TOILET

- Anti-skid/ Matte finish ceramic tiled floor.
- Dado designed ceramic wall tiles up to door heights.
- White sanitary ware of (JAQUAR or CERA).
- Reputed CP Fittings and provisions for geyser, exhaust fan (JAQUAR or CERA).
- Plumbing provision for hot & cold lines with CPVC pipes.

## PAINT

- Wall Care Putty for in-side Wall & Ceiling.
- The interior of common space:- Primer & best Quality Washable Paint.
- Exterior:- High-quality waterproof Cement/texture paint with putty on facade

## FLOORING

- Internal Flooring: Double glazed Vitrified Tiles in Bedrooms (4'x2') , Living & Dining, wooden tiles in Master Bedroom, (4'x2') Stair & lift lobby with Marble.
- Anti Skid Ceramic Floor Tiles in Kitchen & Toilet.
- External Flooring: Parking Tiles/Paver Block in Driveway, Garage.

## ELECTRICALS

- Modular switches of reputed make.
- AC points in all rooms and for Living/Dining.
- Necessary electrical points with switches in all bedrooms, Living/ Dining, Kitchen, and Toilets
- Concealed copper wiring with Central MCB of reputed make.

## KITCHEN

- Stainless steel sink.
- Dado of ceramic tiles up to 2.5 feet above the counter.
- Granite Kitchen Counter.
- Sufficient power point for Electrical Fixtures.
- Reputed C.P. Fittings of (JAQUAR or CERA).







# OUR PROJECTS



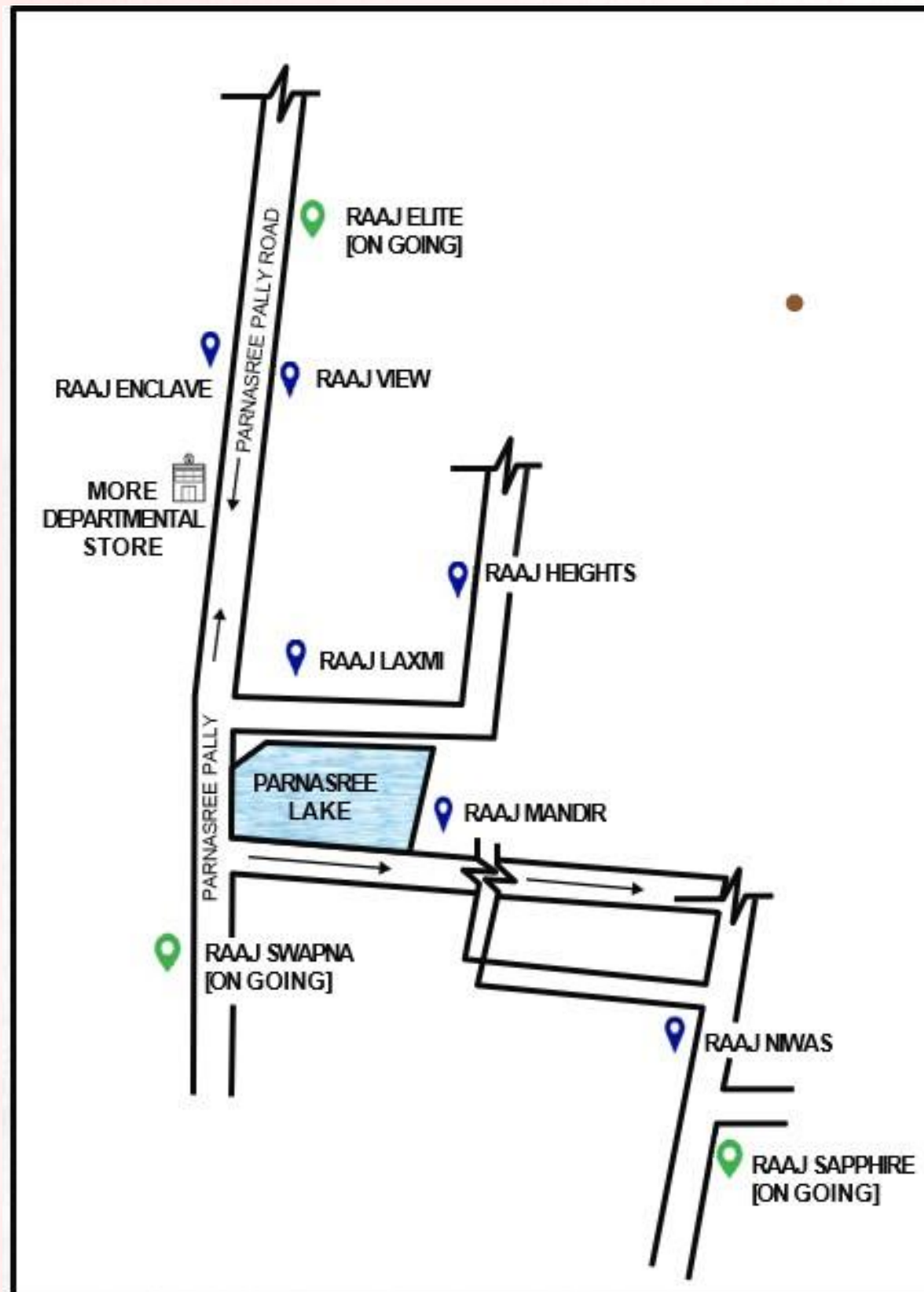




# OUR PROJECTS







# FIRSTBLISS ENTERPRISES PRIVATE LIMITED

Address: 312 Parnasree Pally, Ground Floor, Kol-60

Website: [www.firstblissenterprises.com](http://www.firstblissenterprises.com)

Contact No.: +91-7278744497

+91-9830927979

+91-9038930468