

Sustainability Software

# IBM Maximo



# Agenda

## IBM TEAM

### Colton Howard

Maximo Technical Specialist

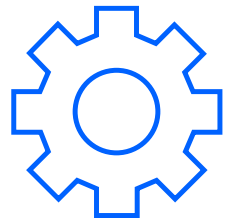
### Simon Cantwell

Maximo Technical Specialist

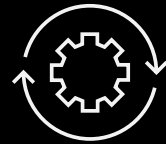
## Objectives of the call

1. Introductions
2. Maximo Visual Inspection Overview
3. Demonstration
4. Next Steps

# What Wabtec Uses Today

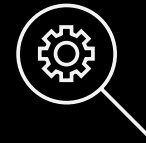


Maximo Application Suite



## Manage

Intelligent asset management



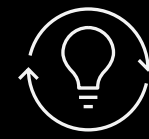
## Monitor

Monitor real time data and detect anomalies



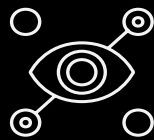
## Health

360-degree view of asset health



## Predict

Predict failures earlier using AI



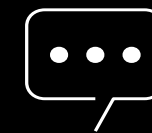
## Visual Inspection

AI-Powered insights for inspections and production quality



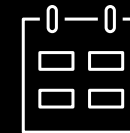
## Mobile

Technician work execution remotely



## Assist

Prescriptive assistance using Generative AI



## Scheduler

Schedule work and resources

# Maximo Visual Inspection



## Business Value

- Increase accuracy and speed of inspection to **99%+**
- Manual inspections ONLY catch **18%** of issues, increasing annual maintenance costs by **20%+**
- Rework and Material waste cost amounts to **1.2%** of annual rev
- Increase expert productivity



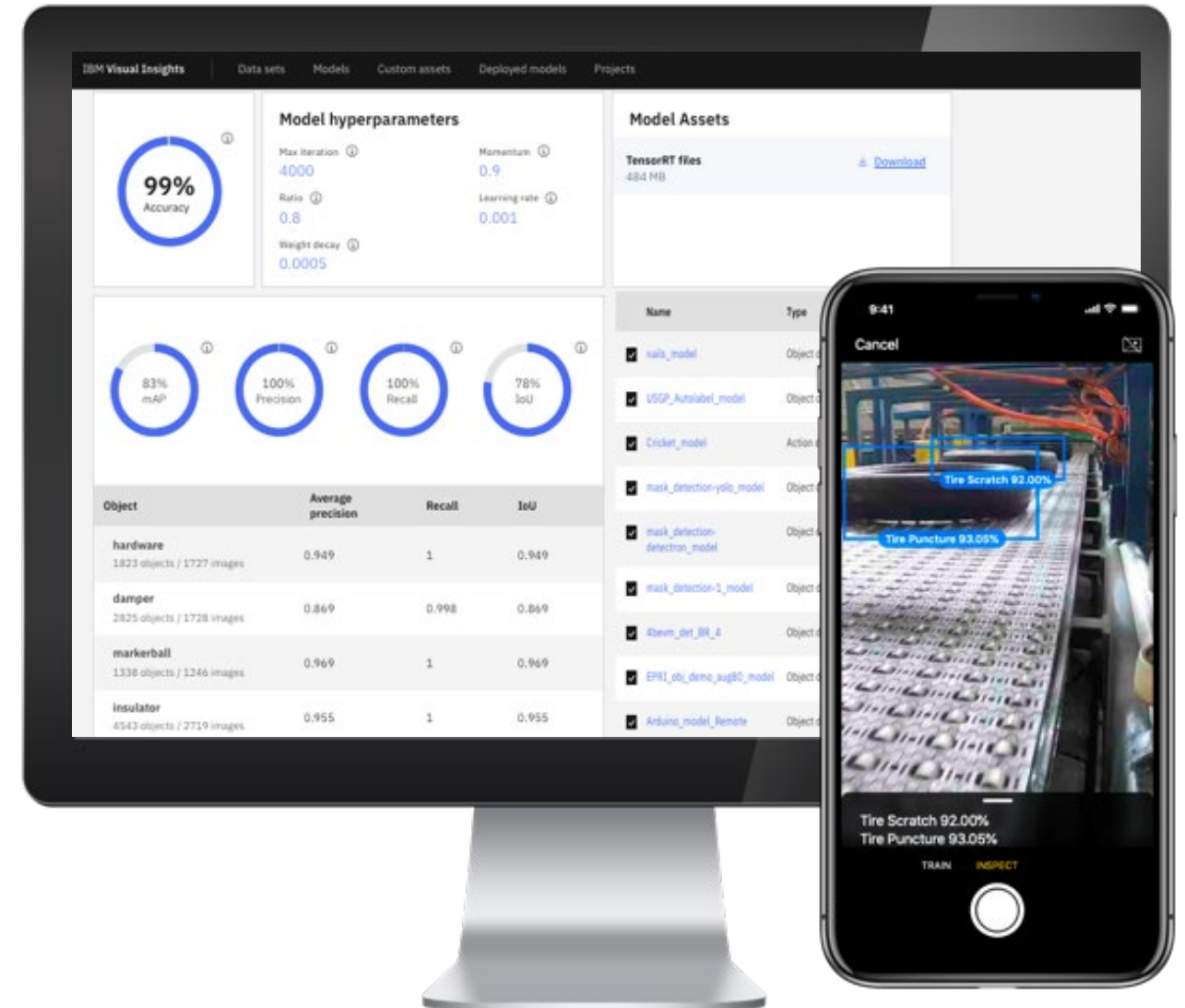
## Application

- Central point for management of AI models
- Application for enhanced physical inspections, production quality, counting, and barcode scanning.
- Powerful auto-AI engine at the core reduces cost and time for AI development by **65%+**



## Capabilities

- Simple, rapid deployment of custom computer vision models
- Classification, Object Detection, and Action Detection models to support a variety of organizational requirements

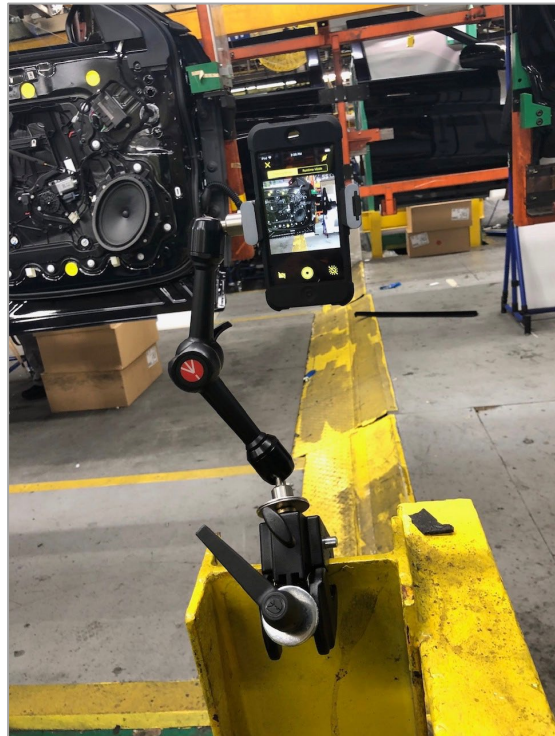


# IBM Maximo Visual Inspection: Game Changing Capability



**Quick response** to process issues using off the shelf Visual Inspection technology

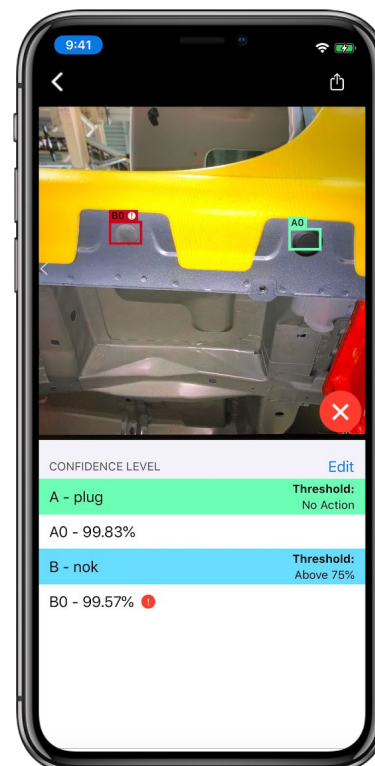
## Install



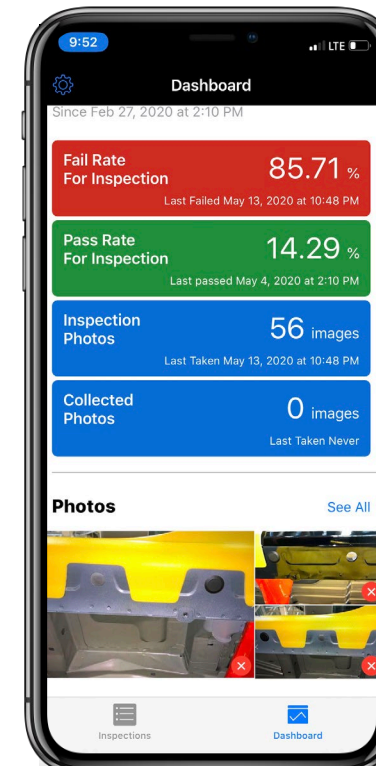
## Collect



## Inspect



## Alert



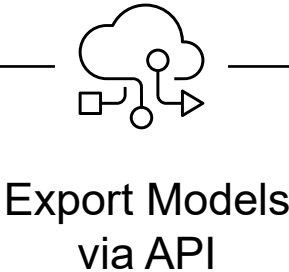
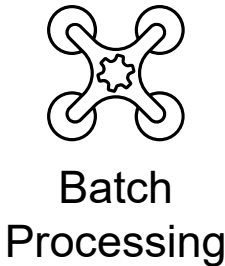
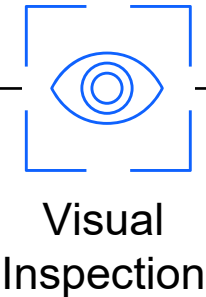
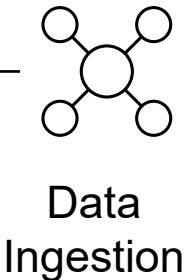
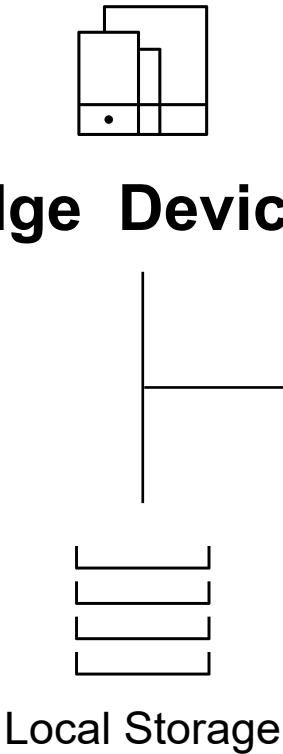
Hours

- Improves **inspection, failure detection and error-proofing processes** with machine learning, acoustic modeling, and visual recognition.
- To be used in **handheld devices or fixed mounts**.
- **Instant diagnosis** – object detection and defect detection & classification.
- **Automotive specific triggers** – timestamp, VIN, broadcast codes.
- Easy to deploy by using **everyday technology**.
- Dashboard with **trending analytics**.
- **Respond to process issues in hours**, not days or weeks

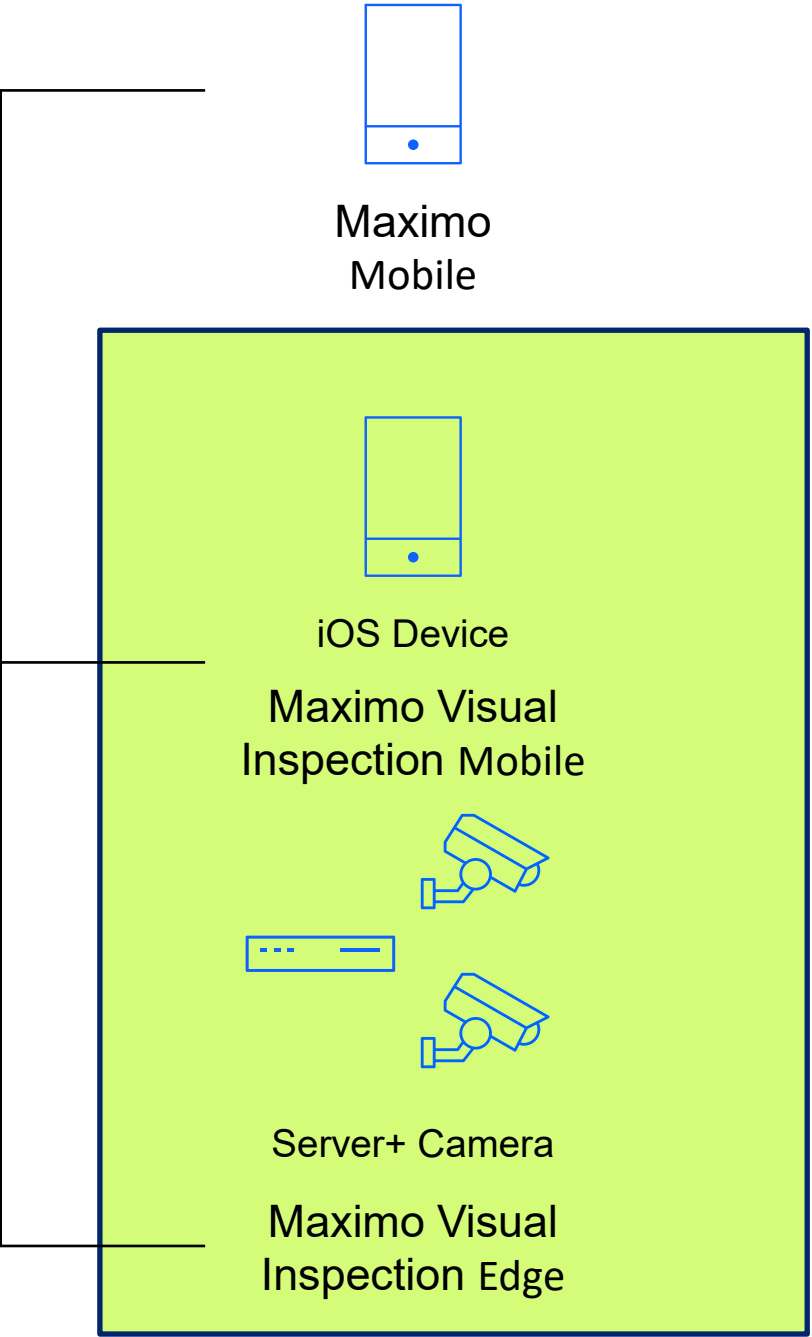
# Maximo Visual Inspection

Label, Train, and Deploy

## Edge Devices



## Edge Devices





# Operational workflow with MVI and OT/IT systems

## Maximo Application Suite



**Quinton**  
Quality Engineer  
(Field inspections)

Checks Visual  
Inspection Results

Continues to Build New  
Computer Vision Models

## MES (Manufacturing inspections)



VIN NUMBER  
1ABCD23EFGH456789

Trigger inspections of  
parts moving on the  
production line




Maximo Visual Inspection Edge  
Or MVI Mobile



Stop the Line/Notify operator  
When Defects are Found

**Production Parts**  
Body Panels



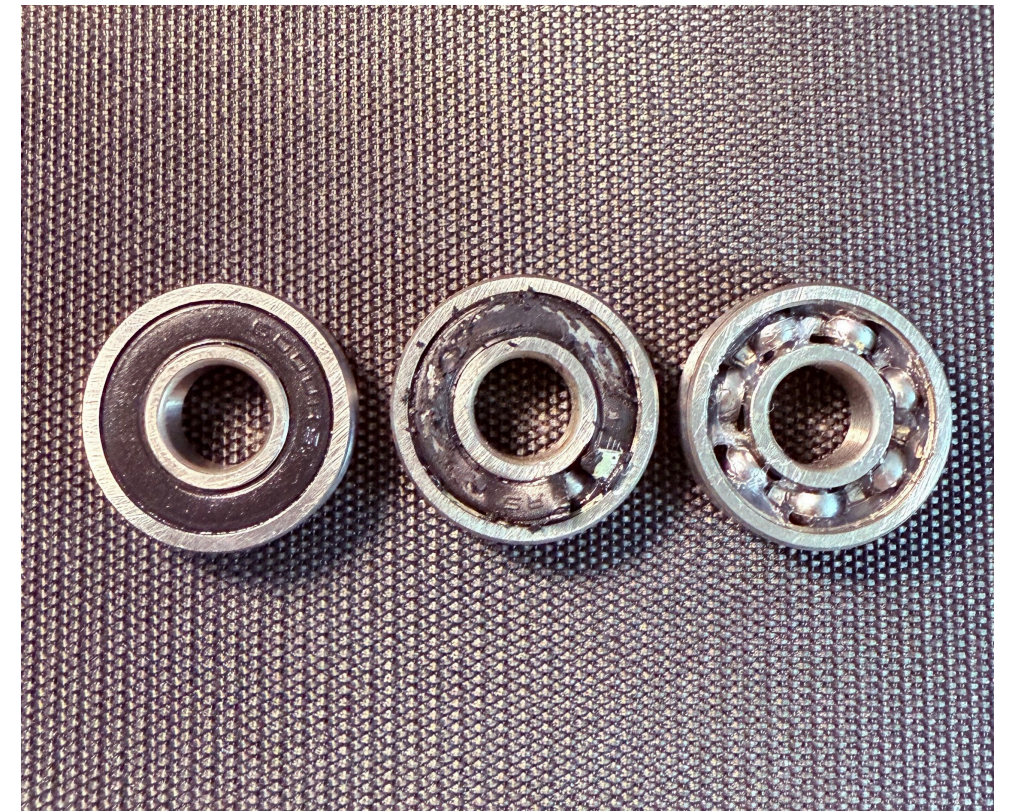
# Demonstration

## Bearing Defects

**Left** - Good Condition : No visible issues

**Middle** - Surface Defect: Visible scratches and burrs on its surface. Compromising the shield's sealing capability or leading to corrosion risk.

**Right** – Shield Missing: The seal/shield is missing. Its absence could indicate an issue in the assembly process, where a step was skipped or overlooked.





Sustainability Software

IBM Maximo

Demonstration



# Public Success stories- Manufacturing

[Henry Ford Innovation Award](#)

[Automate 2022 Presentation](#)

[MVI Demo](#)

[MVI click through demo](#)

[Automotive News article](#)

[MVI Demo Montage](#)



# Next Steps

