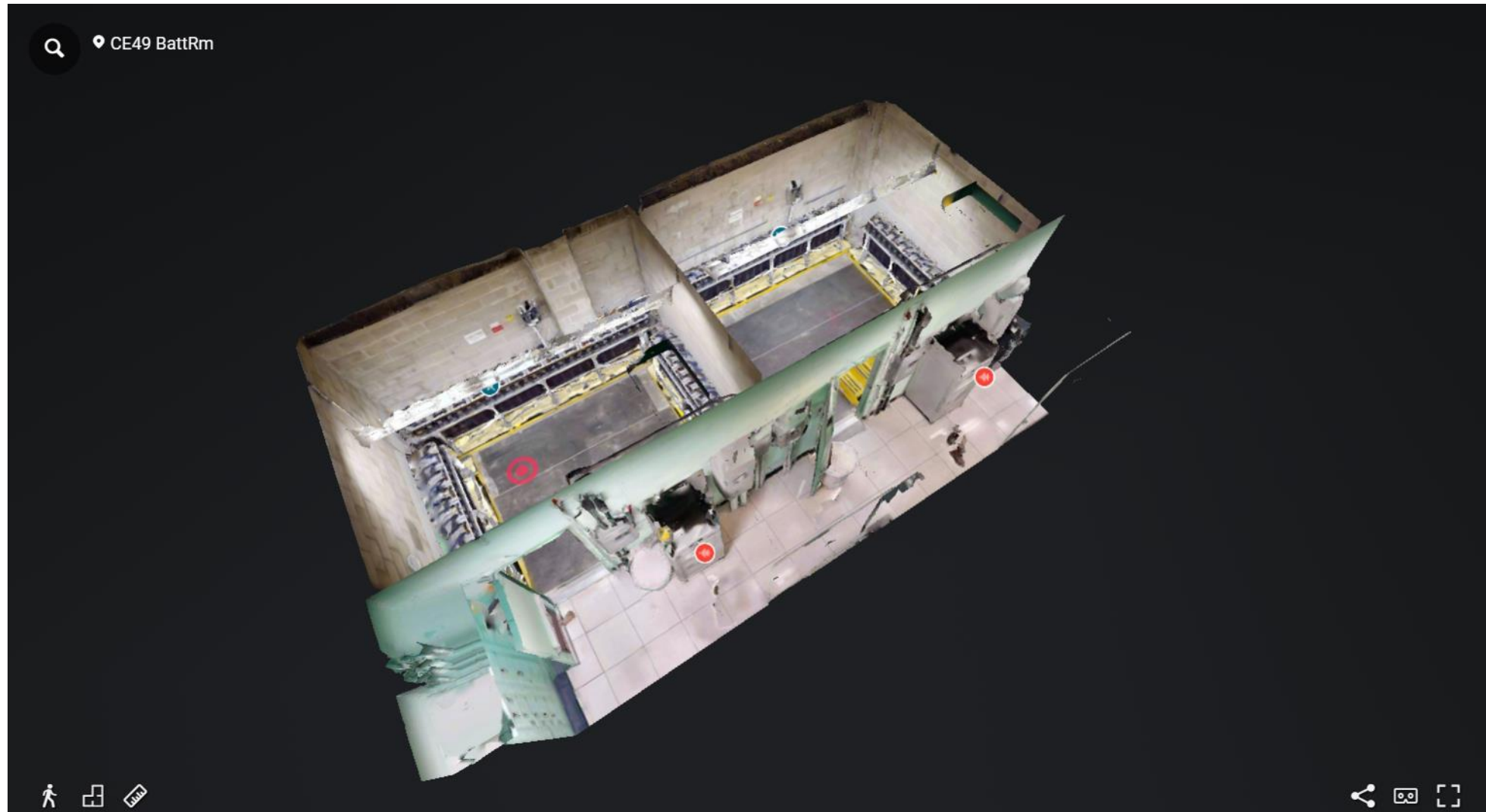


Creating a Digital Twin at Con Ed



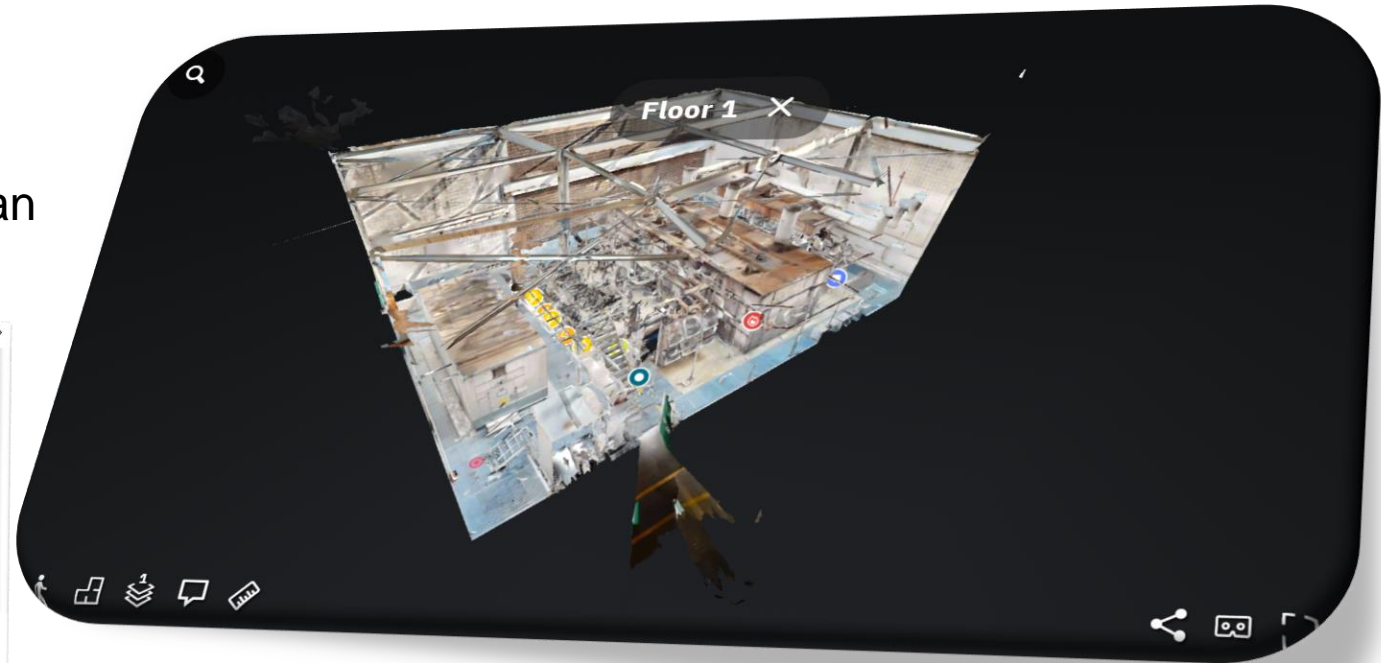
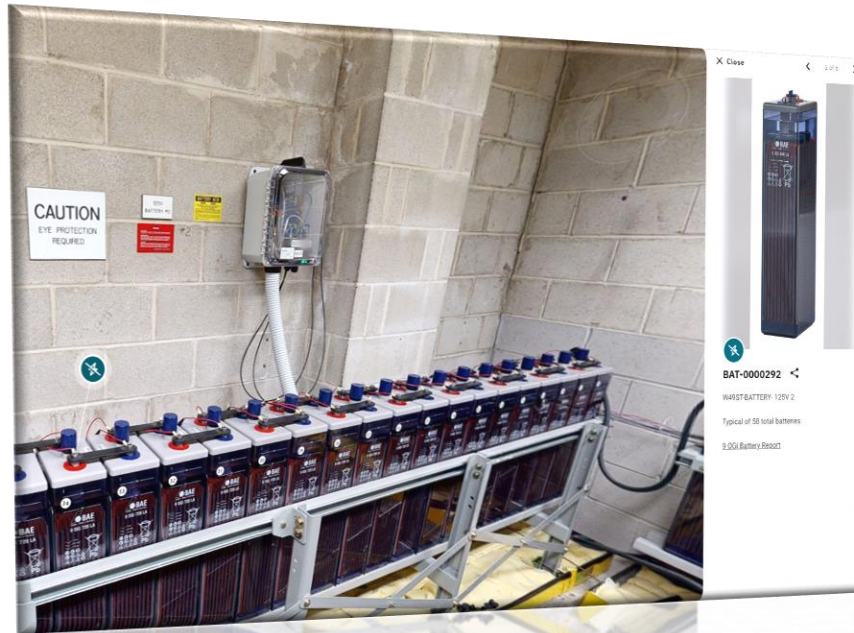
Digital Twins and Their Importance

Virtual space review can aid in:

- Work Planning
- Safety Task Analysis
- Contractor Reviews
- Training

See assets in real world scenarios

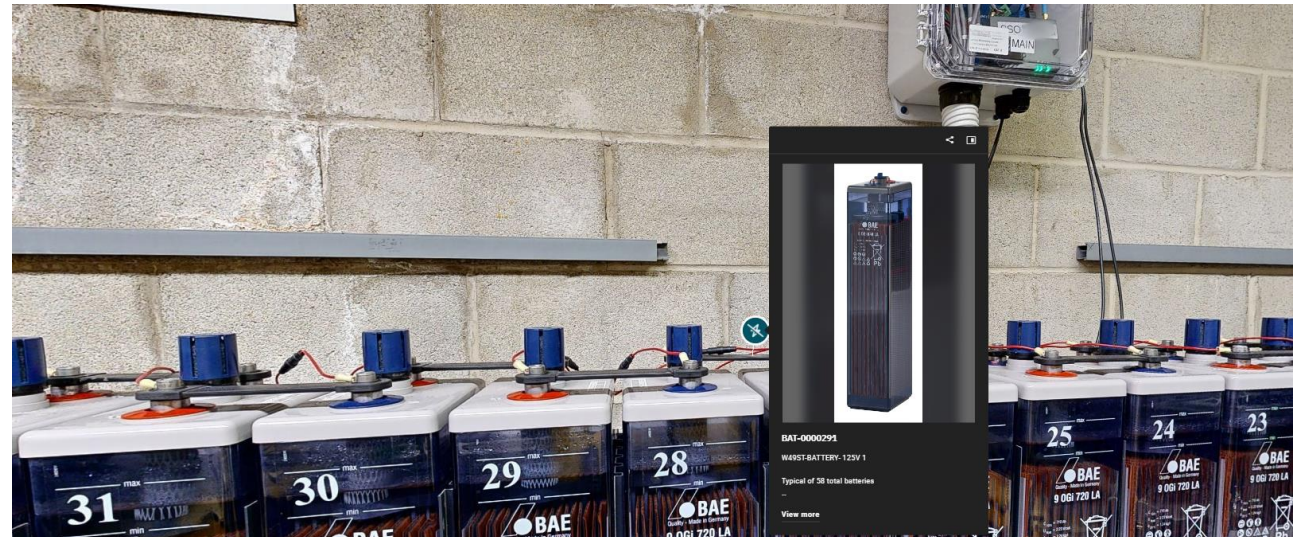
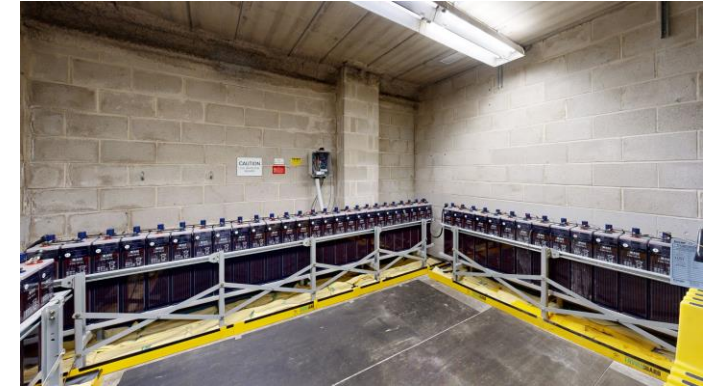
View asset information directly within the scan



Matterport – 3D Scanning

POC Problem Statement Challenges

- Maximo Integration for Digital Twins
- Identify hazards associated to jobs in pre-onsite job briefing discussions.
- Initial scoping of PM/CM jobs followed by Field Presence
- Risk assessment (Safety/Equipment Reliability/Environment)
- Heightened Situational Awareness



Digital Twin Tools



All Spaces

CE49 BattRm

3C

Space

Details

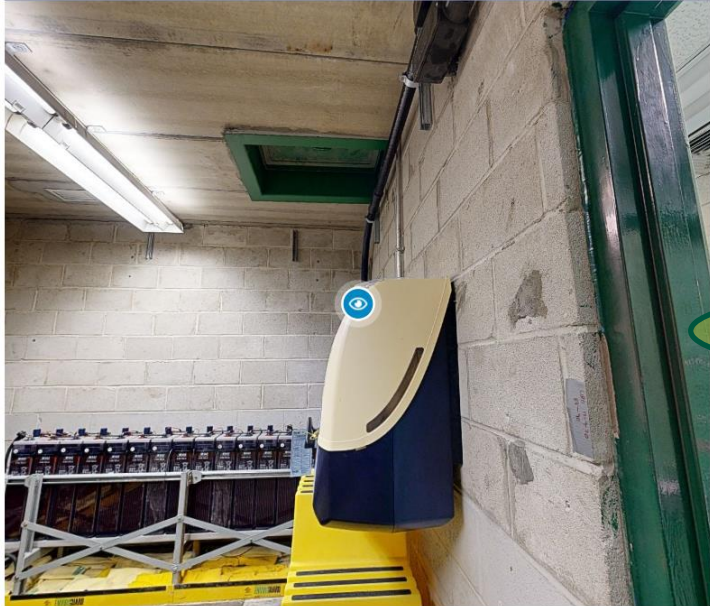
Add-ons

Media

Property Report

New

Stats



Close

1 of 6

EWH-0000335

W49 EMERGENCY EY WASH 1 BATTERY ROOM 1

Zoro - Aquarion Eyewash Station

Attachments

Aquarion_Eyewash_Cut_She... 258.7kB

C:/Users/MikeGuns/Downloads/Aquarion_Eyewash_Cut_Sheet%20(3).pdf


JFC CONNEX IoT

UCSDH UCSF Valley Water IBM Maximo

trib - Planner Maximo Support Se... Projectech Apps Da... Home - SmartSheet... IFS Ultimo Academy 2023 AMP VOLUNT...

Ask Copilot

1 of 2



Aquarion™ Portable Eye Wash Station

PLS455 Portable, Holds 7.4 gal., Flow Rate 0.4 gal./Minute Minimum

Self-contained eye wash station offers multiple inspection points and factory-sealed saline solution cartridges for easy maintenance.

- Multiple points of inspection include a usage seal on the tray, side windows for quick visual inspections and a removable lid for a thorough inspection of cartridges
- Factory-sealed cartridges are ideal when a direct plumbing line is inaccessible or inconvenient
- Sleek design avoids crevices where dust or dirt can accumulate to prevent the growth of mold, fungus and bacteria
- High-visibility eye wash is easy to find in emergency situations
- One-step activation; just pull down the tray and water flow begins in less than a second
- Self-contained fluid cartridges (PLS456, sold separately) provide a 0.4 gallon-per-minute eye wash for up to 15 minutes; replacing used cartridges is quick and easy

Encon

Specifications

Style	Portable
Dimensions	17.5" W x 23.5" L x 30.5" H
Brand	Encon
Capacity	7.4 gal.
Dispensing Method	Gravity-fed
Flow Rate	0.4 gal./Minute Minimum
Color	Black/Yellow
Fluid Storage Method	Cartridge
Sold as	1 each
Weight	30 lbs.
# per Pallet	10
Composition	Abs Plastic & Polycarbonate
UNSPSC	46181810
Pigalog® Page Number	Page 292

Digital Twins and Maximo



Matterport


- Dashboard
- All Spaces
- Public and Unlisted Spaces
- Statistics
- Users
- Capture Services
- What's New
- Discover
- Settings

MG Michael

All Spaces

MEP Room

Space Details Add-ons Media Property Report Now Stats



Asset: 1008
Description: Hot Water Heater 2
Priority: undetermined
Location: BOILER

Status: OPERATING
[Add WorkOrder](#)
[Add ServiceRequest](#)

[Installation and Operation Manual](#)

Export Share Edit

Work Order

Work Order: 5005

Location: BOILER MEP Room

Asset: 1008 Hot Water Heater 2

Classification:

Class Description:

Launch Entry Name:

Parent WO:

Site: BEDFORD

Class: WORKORDEF

Work Type:

GL Account: 6210-300-???

Failure Class:

Problem Code:

Storeroom Material Status:

Direct Issue Material Status:

Work Package Material Status:

Material Status Last Updated:

Attachments

Status: WAPPR

* Status Date: 3/8/24 10:02 AM

Inherit Status Changes? ☒

Accepts Charges? ☒

Is Task? ☐

Under Flow Control? ☐

Suspend Flow Control? ☐

Flow Action:

Flow Action Assist? ☐

Appointment Required? ☐

Job Details

Job Plan:

Job Plan Revision #:

PM:

Safety Plan:

Contract:

Asset Details

Asset Up? ☒

Warranties Exist? ☐

SLA Applied? ☐

Charge to Store? ☐

Current Value:

Priority

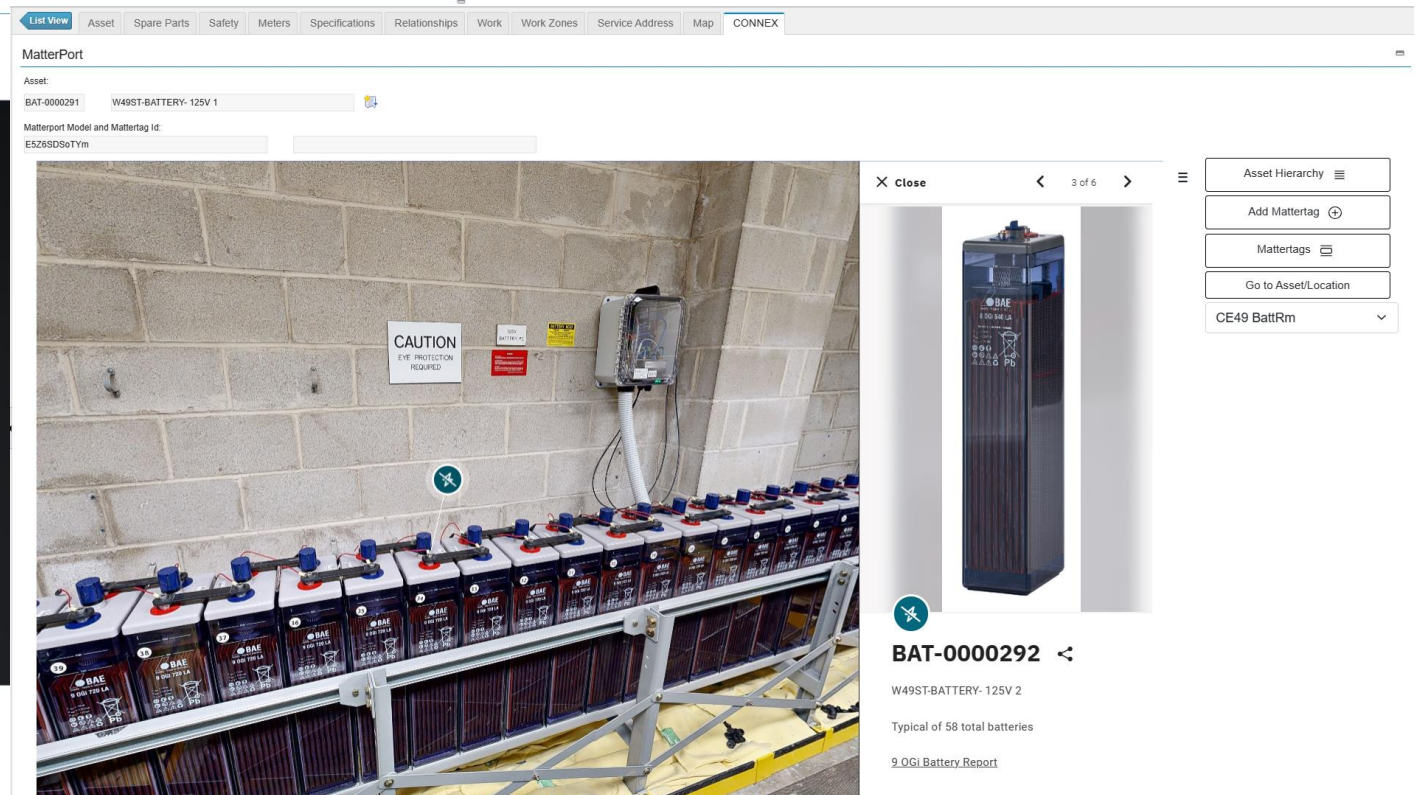
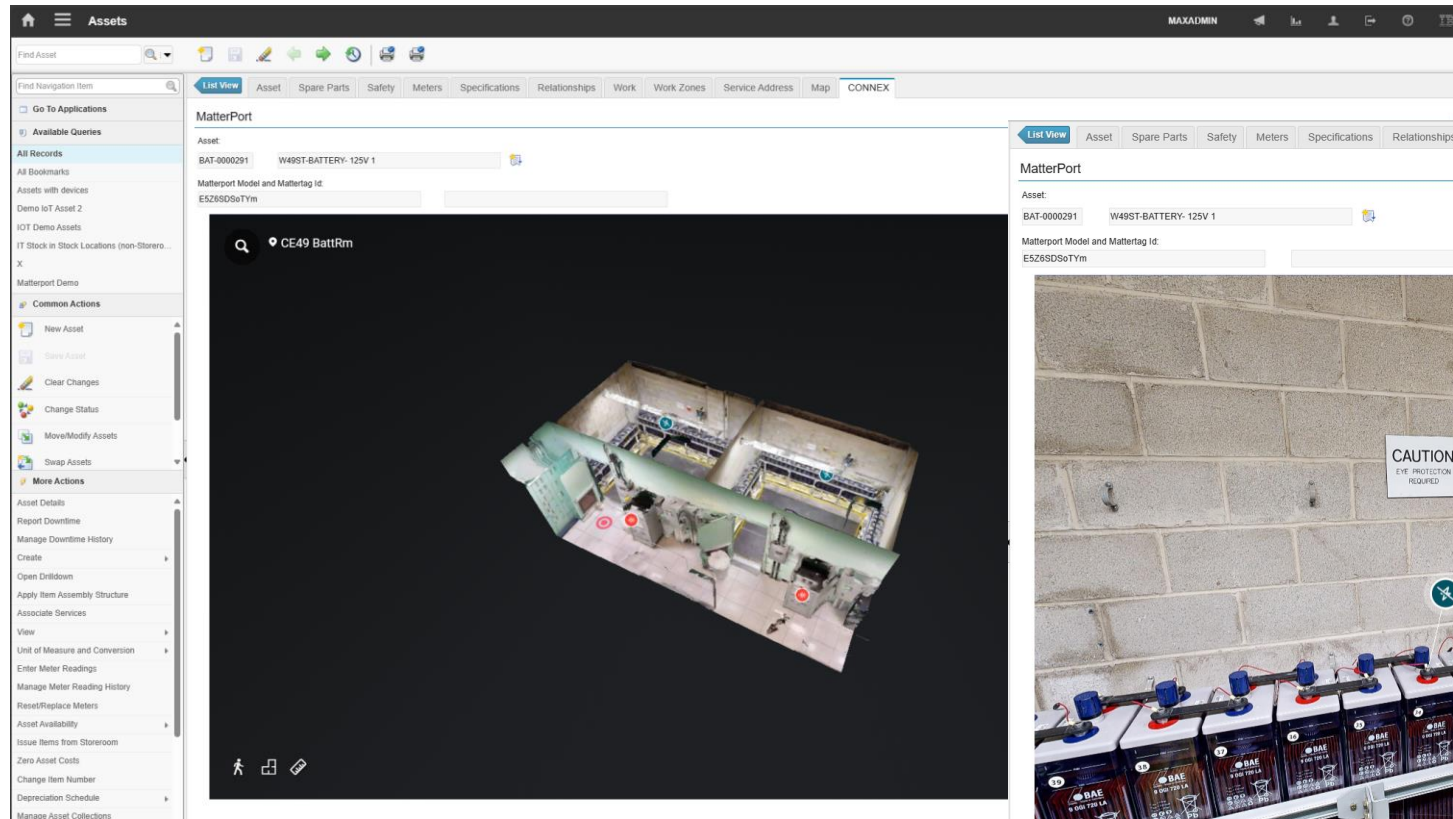
Asset/Location Priority:

Priority:

Priority Justification:

Risk Assessment:

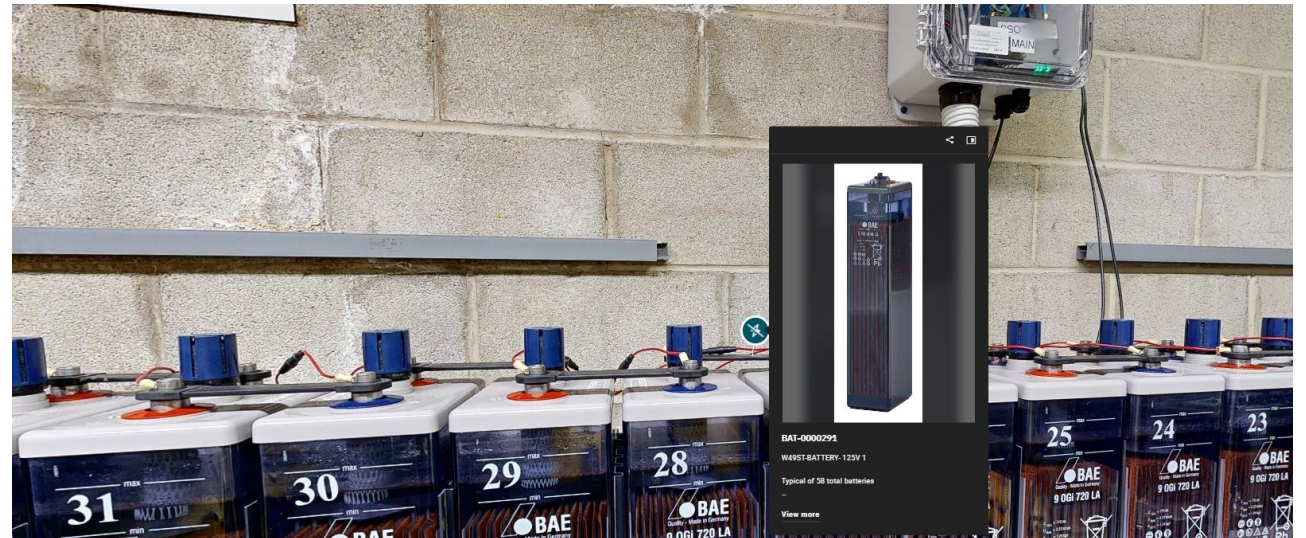
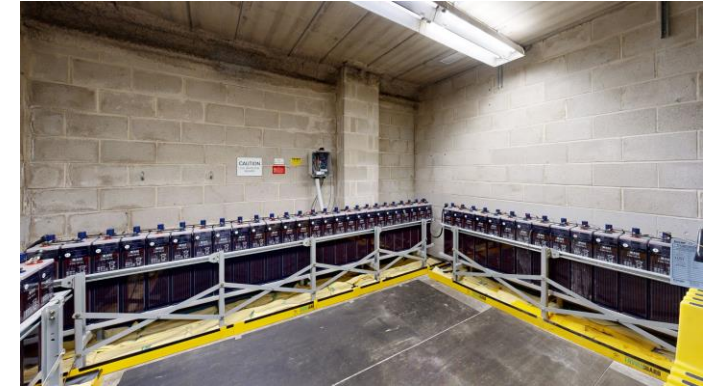
Digital Twins and Maximo



Matterport – 3D Scanning

POC Problem Statement Solutions

- Maximo Integration for Digital Twins
- Increased visibility over work bundling opportunities
- Train new personnel on substations (Virtual Tours)
- Identify hazards associated to jobs in pre-onsite job briefing discussions.
- Utilize wearables to see asset tags and Aveva Pi real-time data
- Initial scoping of PM/CM jobs followed by Field Presence
- Operational Excellence in Operating Orders
- Risk assessment (Safety/Equipment Reliability/Environment)
- Heightened Situational Awareness
- Historical Reference
- New station design efforts referencing with existing as-builts
- 3D CAD and BIM extraction for Design Engineering



Questions