



# Importance of Data Analytics at Con Ed

Gregory Pryor  
Substation Operations  
General Manager

1

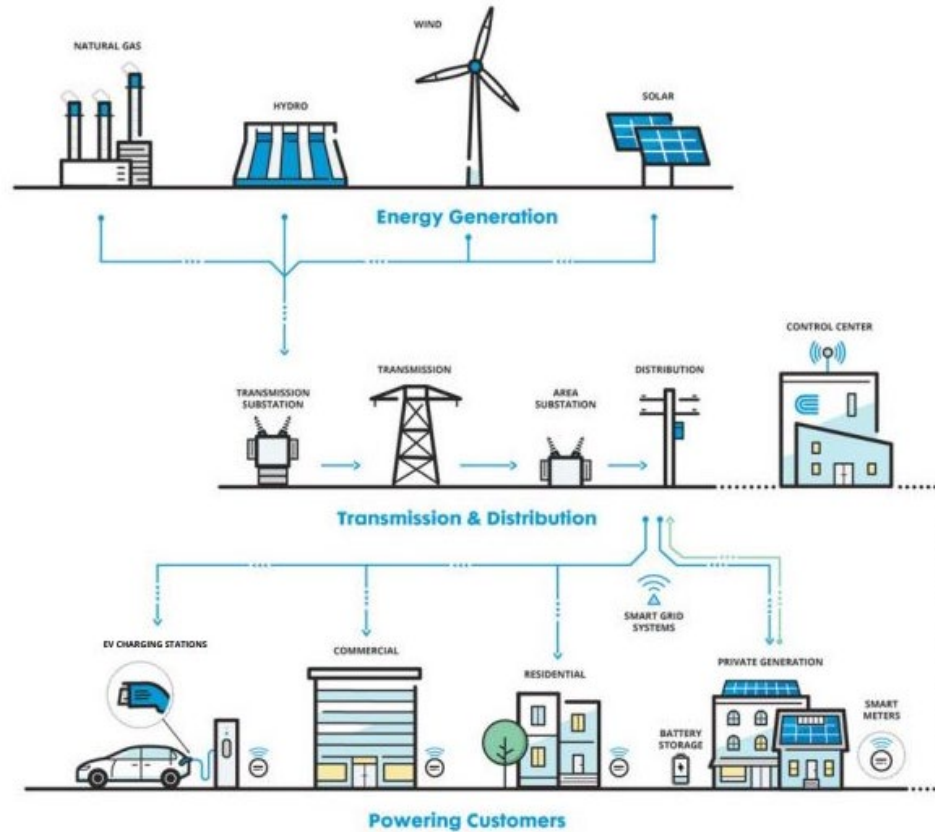
6 May

2025

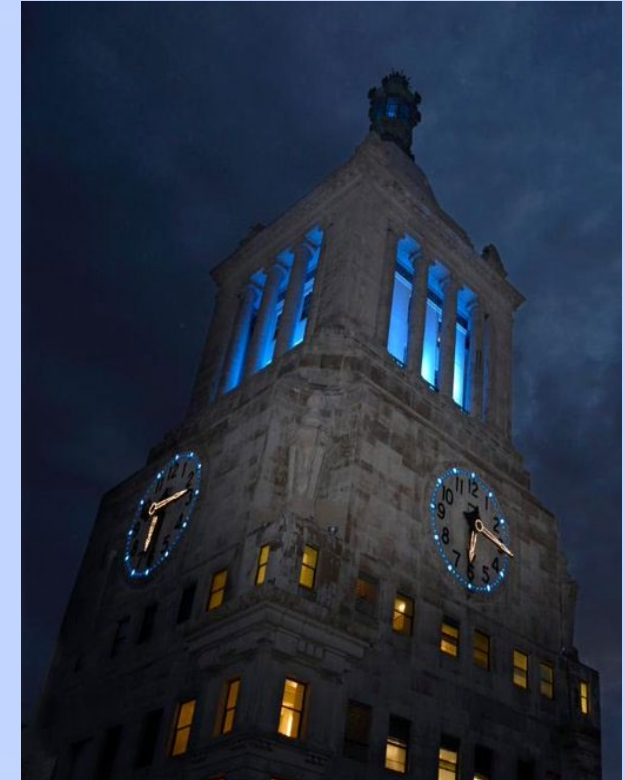
## Overview of Con Edison's Electric System

Con Edison's electric service territory includes both New York City and Westchester County, covering 660 square miles and serving 3.6 million customers. Con Edison's grid is a delivery system that connects energy sources to customers.

Energy produced by generating sources is delivered via the Con Edison transmission system, which includes 430 circuit-miles of overhead transmission lines and the largest underground transmission system in the United States, with 749 circuit-miles of underground cable. The system also includes 39 transmission substations. The high-voltage transmission lines bring power from generating facilities to transmission substations, which supply substations, where the voltage is stepped down to distribution levels, as shown in the diagram below.

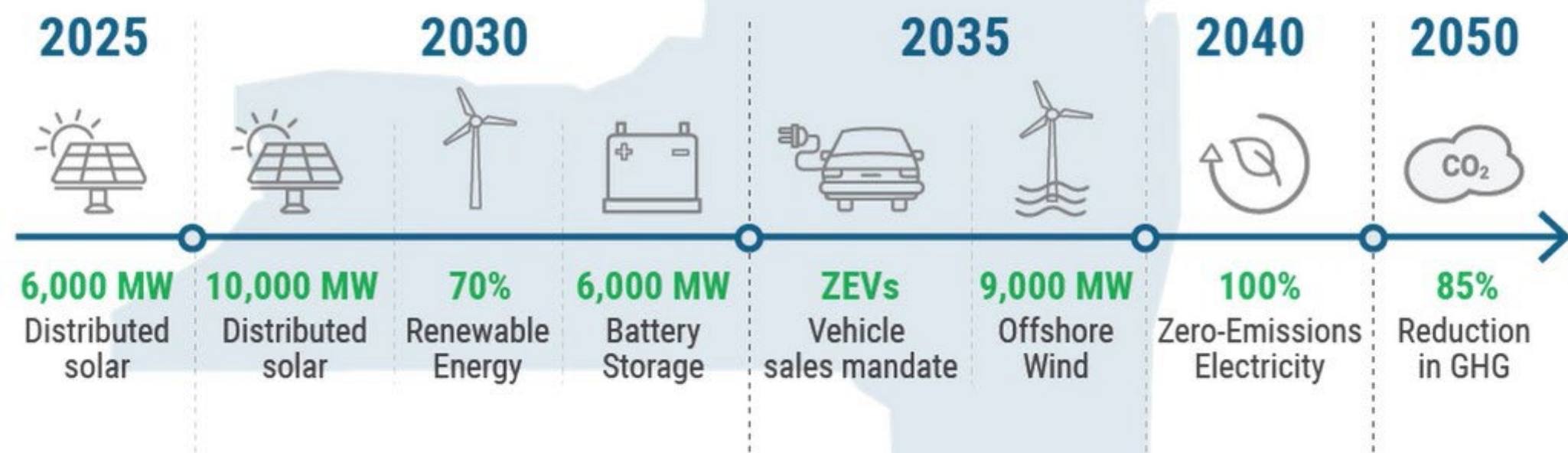


Con Edison has two different distribution systems—the non-network (*primarily overhead*) system and the network (*primarily underground*) system.



# Con Edison Overview

## Clean Energy Evolution NYS CLCPA Targets





A photograph of several offshore wind turbines in a row, stretching from the foreground into the distance over a calm blue sea under a clear sky. The turbines are white with yellow bases.

# Our Clean Energy Commitment

- Key stakeholders in mind
  - Customers and communities we serve
  - Partners in government and regulators
- Five Pillars
  - 1. Build the Grid of the Future**
  2. Empower our Customers to meet Climate Goals
  3. Reimagine the Gas System
  4. Lead by Reducing our Company's Carbon Footprint
  5. Partner with our Stakeholders

## **Pillar One: Build the Grid of the Future**

### **1. Electric Grid Buildout to Support Load Growth**

- Clean Energy Hubs to facilitate 6000 MWs of offshore wind
- New substations
- Local transmission (Reliable Clean City) projects

### **2. Electric Grid Climate Adaptation and Resiliency**

- Undergrounding
- Underground and Overhead Reliability Projects
- Distribution Automation, Circuit Upgrades/ Exits/ Relocations
- Submersible Equipment
- Substation Hardening

### **3. Distributed Energy Resources**

- New grid capabilities
- New technologies for distribution automation, and new tools and analytics for data access (e.g., IEDR)
- Programmatic focus to manage peak demand reduction

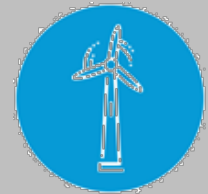
### **4. Utility-Owned Renewables**

- Advocacy to allow utilities to develop, own, and operate renewable generation

### **5. Con Edison Transmission (CET)**

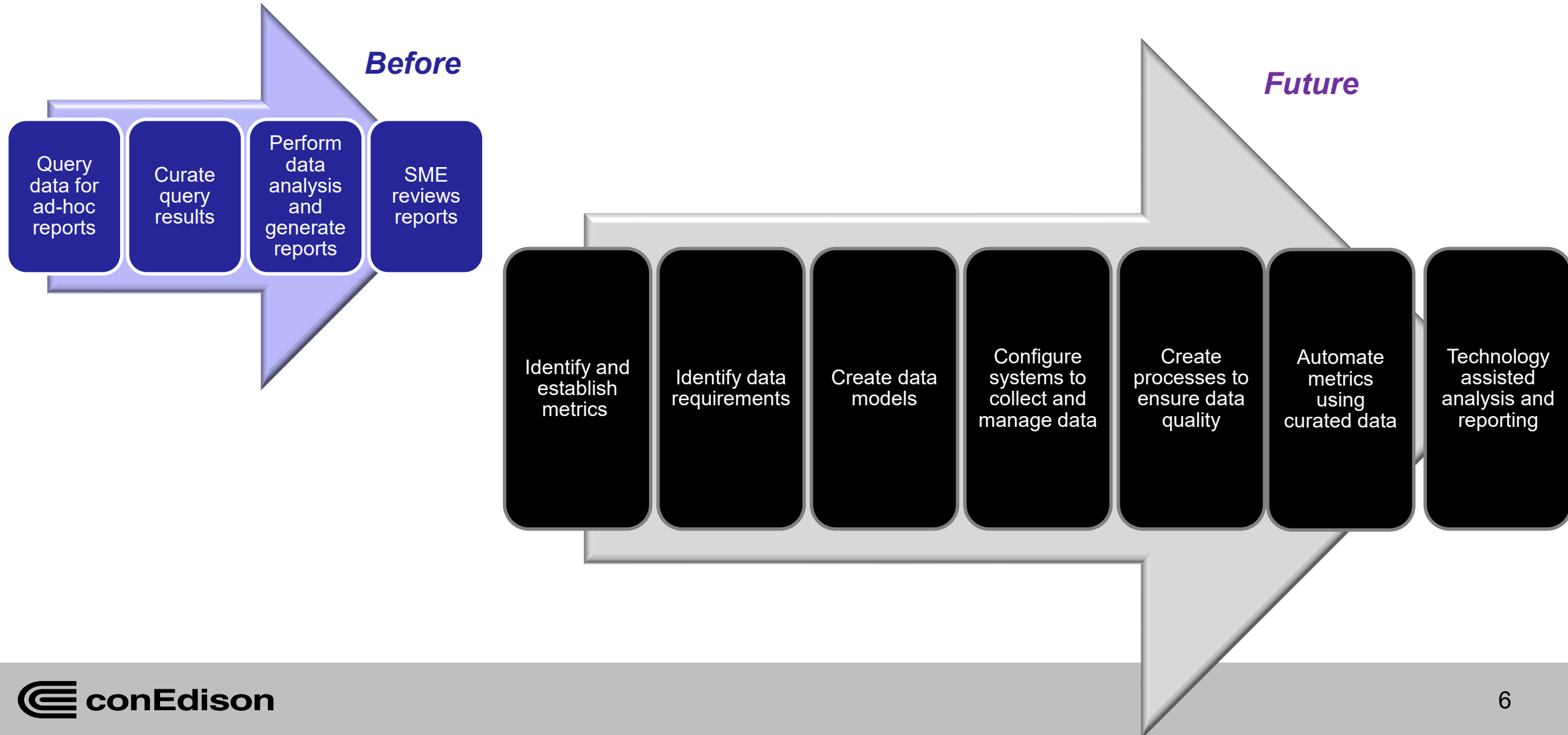
### **6. Energy Storage**

- Large-Scale and Distributed-Battery Systems Deployment

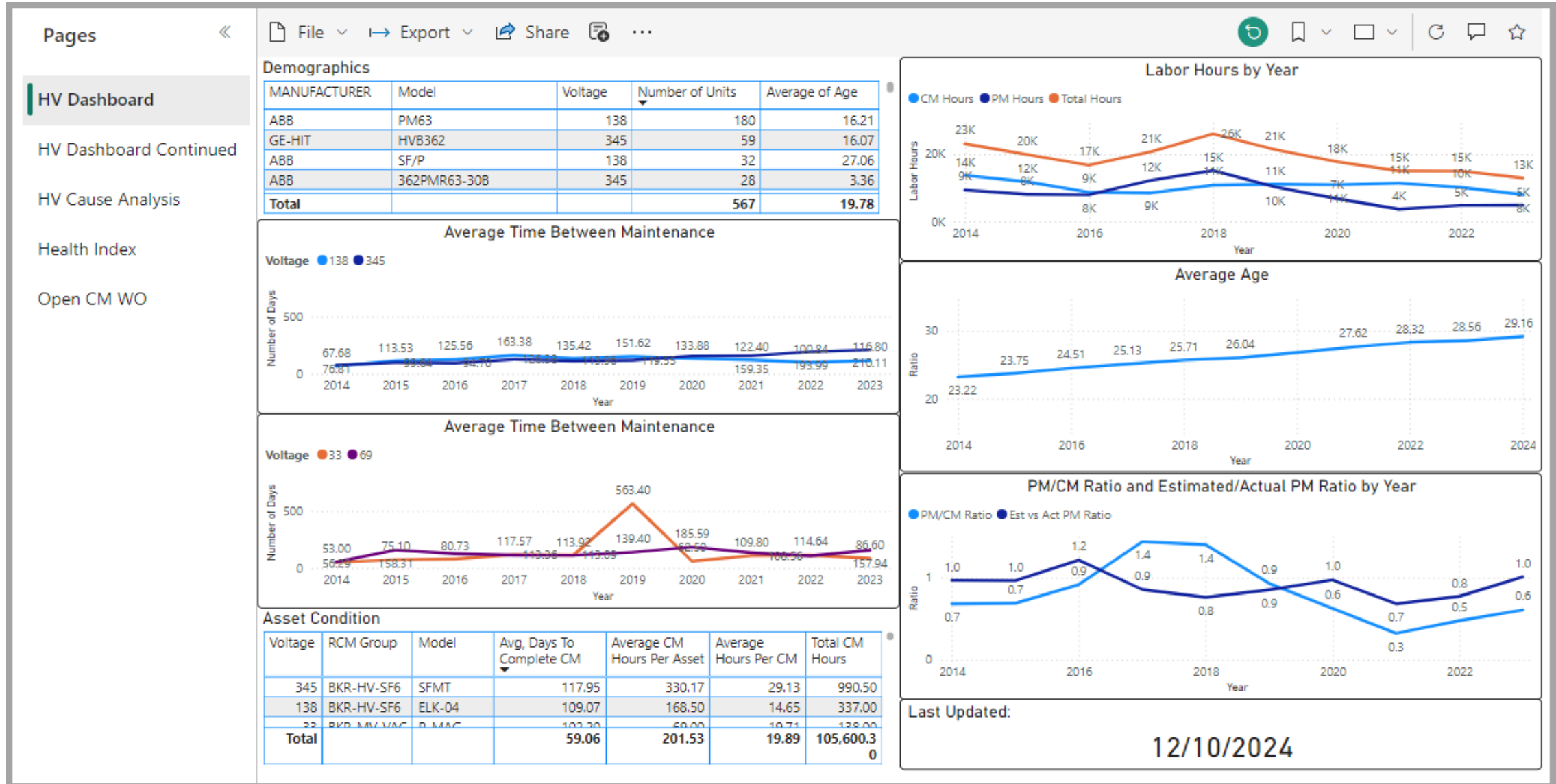


**Build the  
Grid of  
the  
Future**

# Data Analysis Improvements to facilitate Grid of the Future

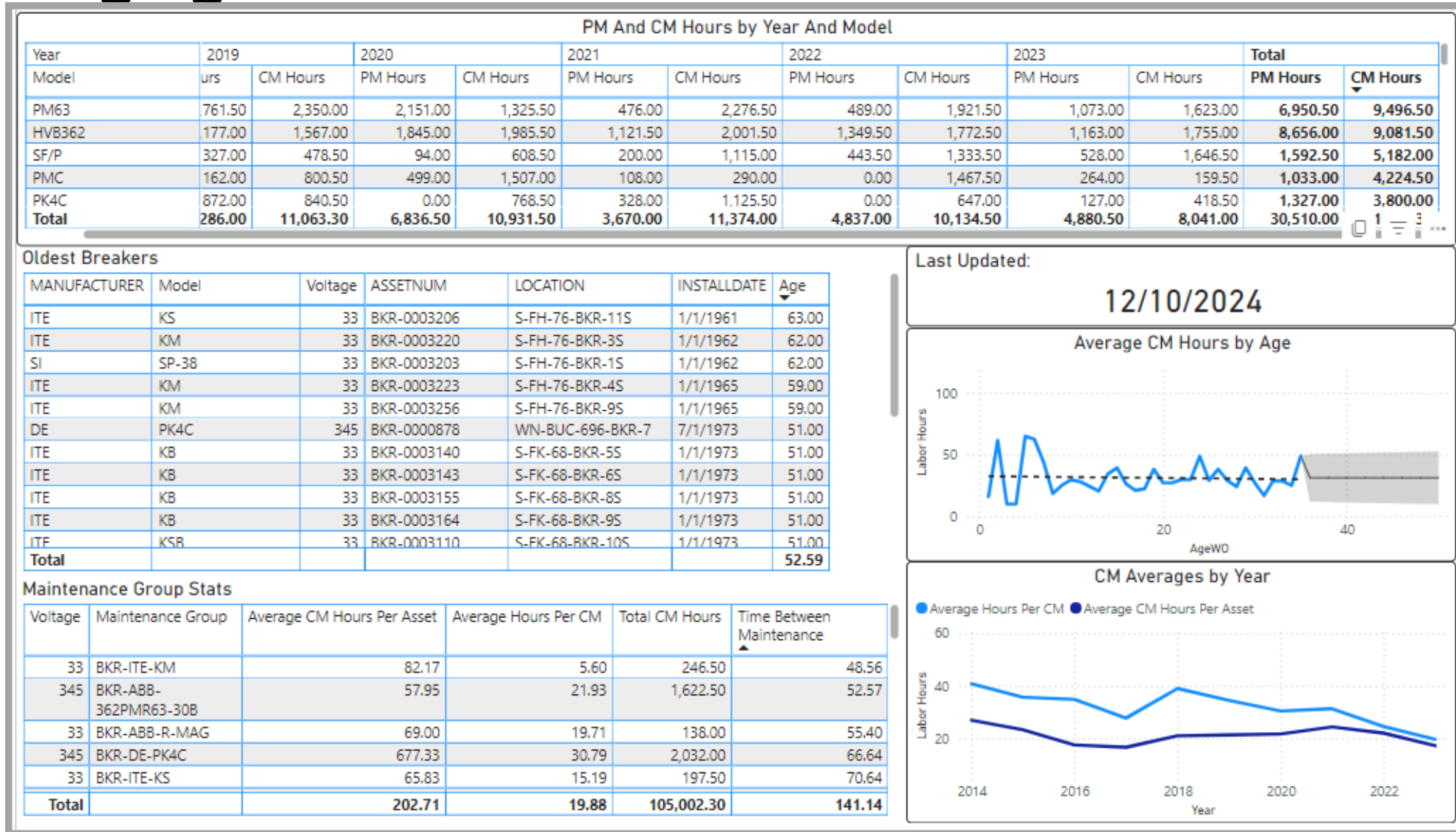


# Leveraging Data: Asset Health Dashboards



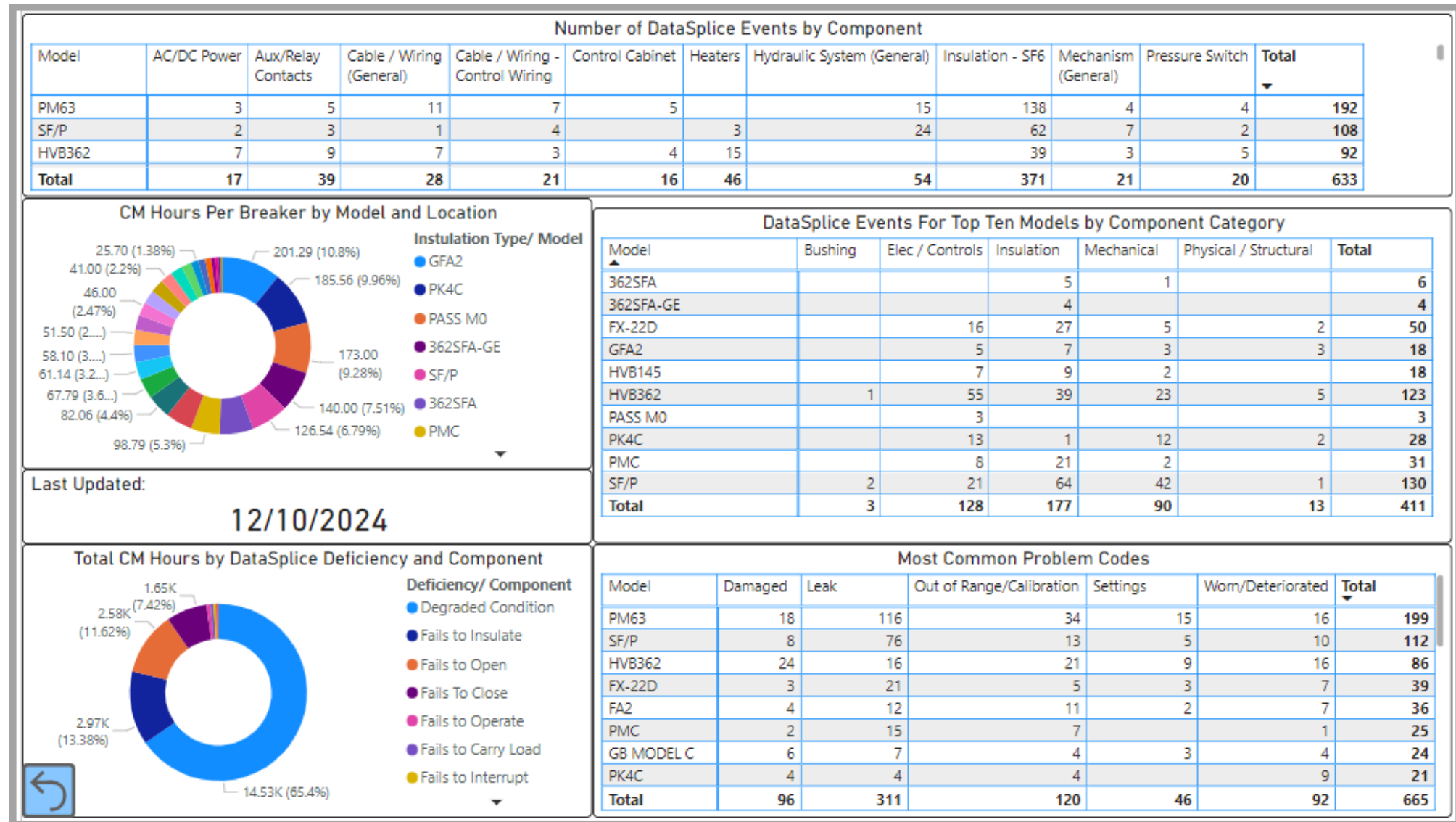


# Leveraging Data: Asset Health Dashboards

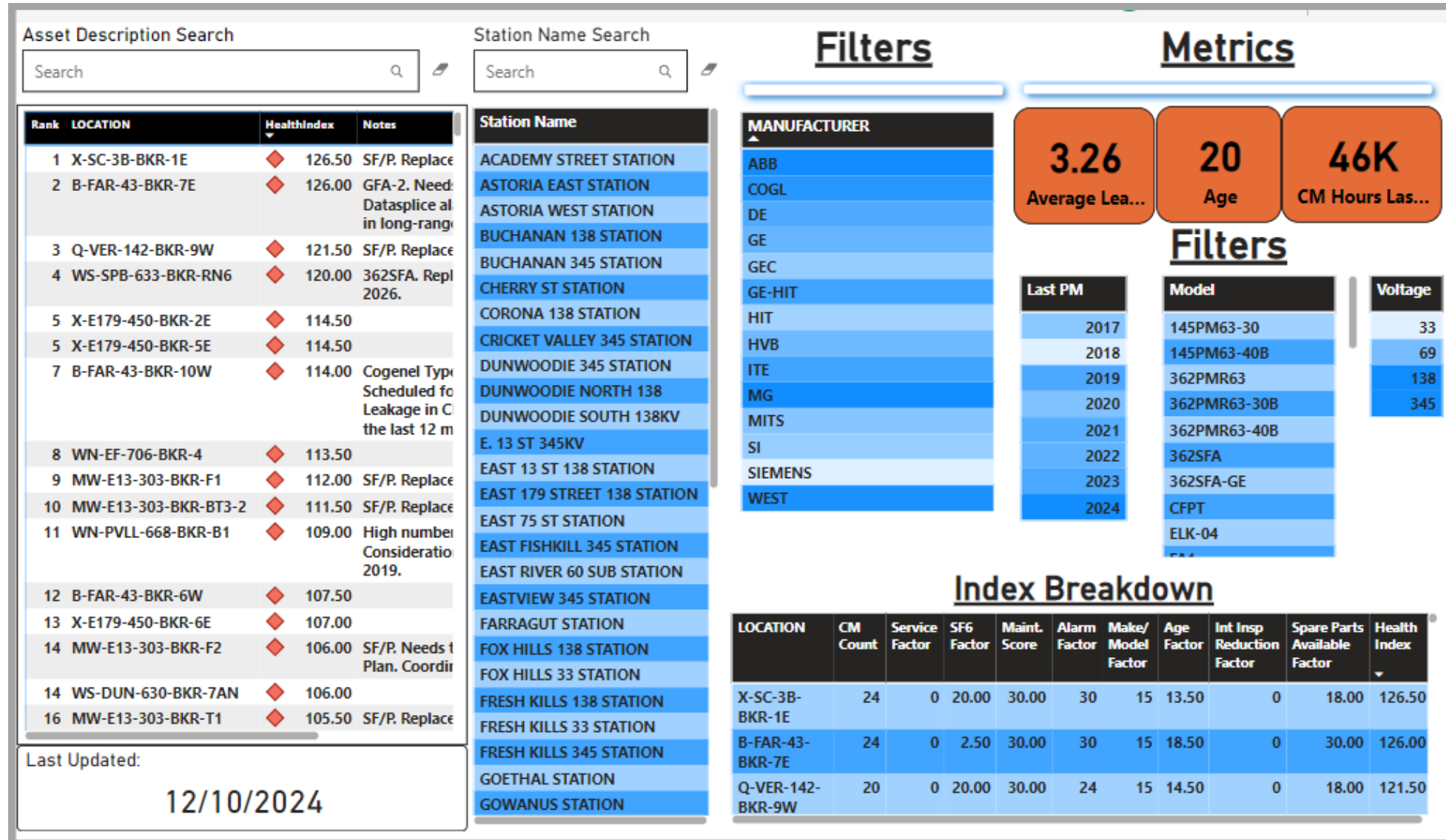




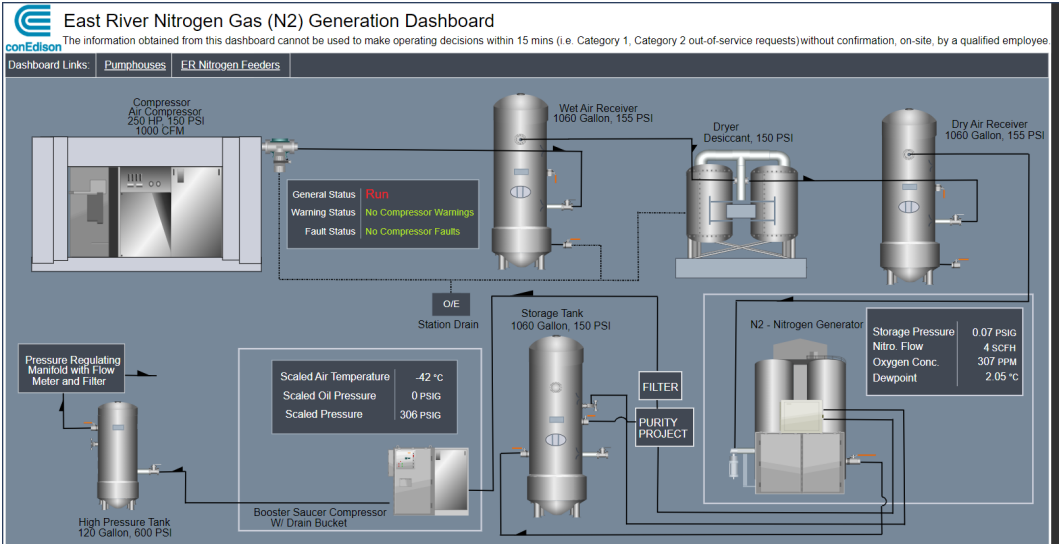
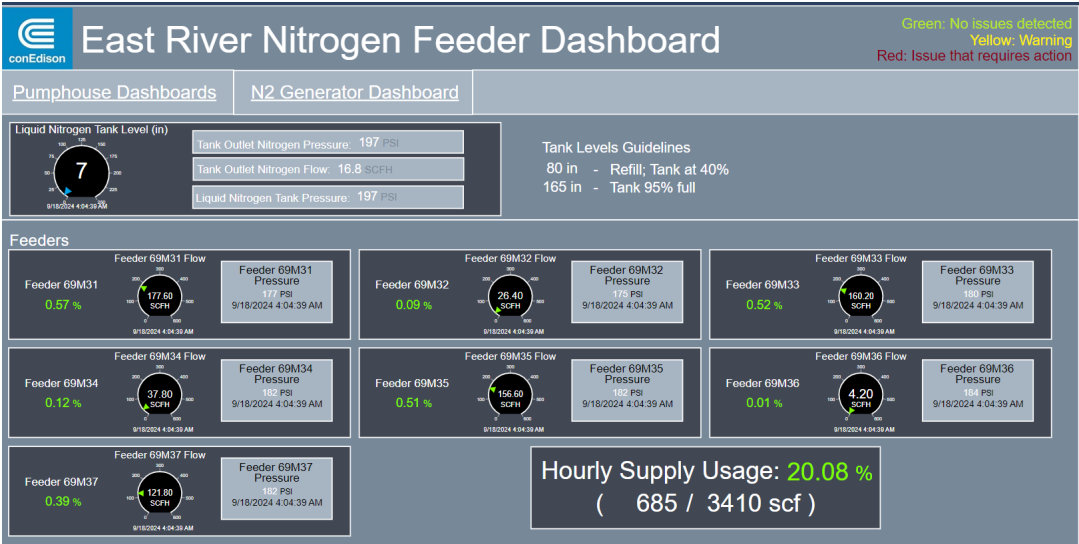
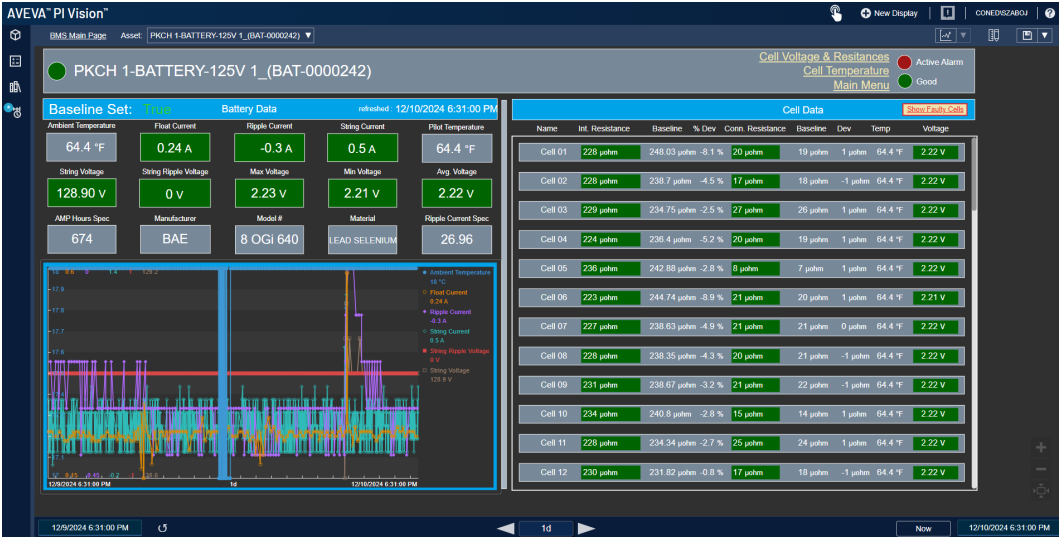
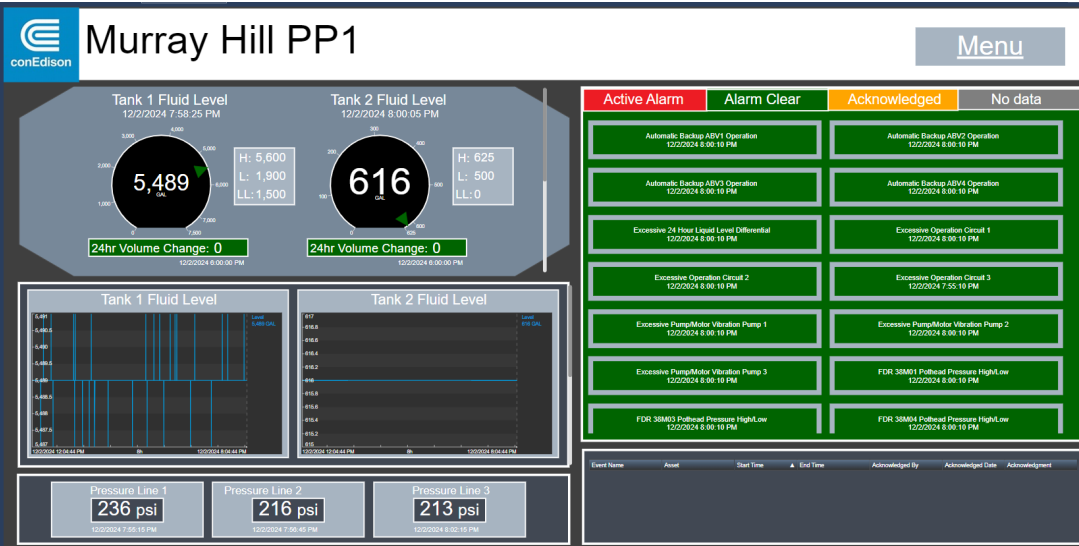
# Leveraging Data: Asset Common Causes



# Leveraging Data: Asset Health Indexes



# Dashboards - - Building Visibility



# **Implementing Innovations: Leveraging Machine Learning**

## Capital Portfolio Optimization

- **Reduced Switching to complete Capital and O&M Work**
- **Efficiency attaining outages for Capital Work**
- **Reduction of Corrective Maintenance Backlog**
- **Incorporating a Value Framework for Capital Work**
- **Meeting our PSC commitment**
- **Identifying Capital Project bundling opportunities**