

131740

6 MILES TO LAKE MAUREPAS

BLOOD

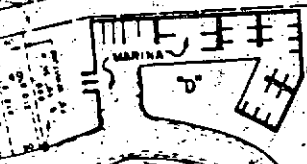
RIVER

RIVER

TICKFAW

CYPRESS SWAMP

SEE ORIGINAL No. 131740  
THEN 203 BOOK 242  
PAGE 68 FOR PLAT.

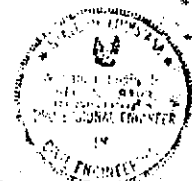


10' WATERWAY

PRESS SWAMP

PHASE I  
RIVER PINES PLANTATION

A survey and subdivision of a parcel of Land Located in Sec. 138, T-8-S, R-6-E, Livingston Parish, La.



certified correct  
*[Signature]*  
BODIN & WEBB  
CONSULTING ENGINEERS  
and LAND SURVEYORS

#131,740

R.P.P. CORP.  
OWNER

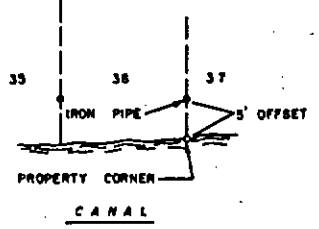
DESIGNED WJB  
DRAWN DSB  
CHECKED JLB  
APPROVED WJB

SCALE  
1" = 200'  
DATE  
OCTOBER 10, 1977

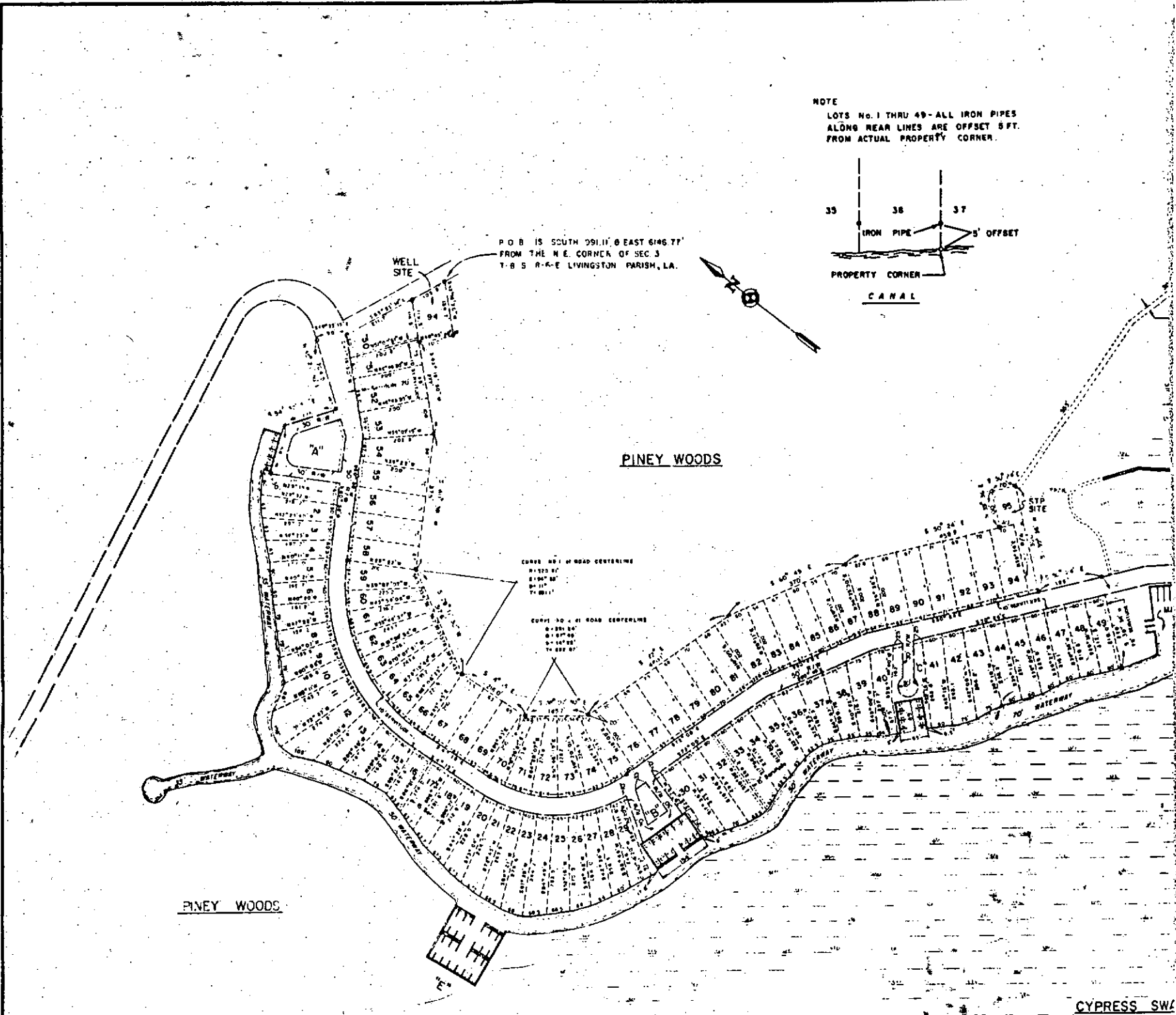
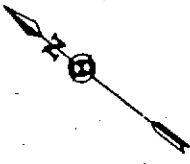
LOT LAYOUT  
TITLE

PROJECT NO.  
1036  
SHEET  
2

NOTE  
 LOTS No. 1 THRU 49- ALL IRON PIPES  
 ALONG REAR LINES ARE OFFSET 5 FT.  
 FROM ACTUAL PROPERTY CORNER.

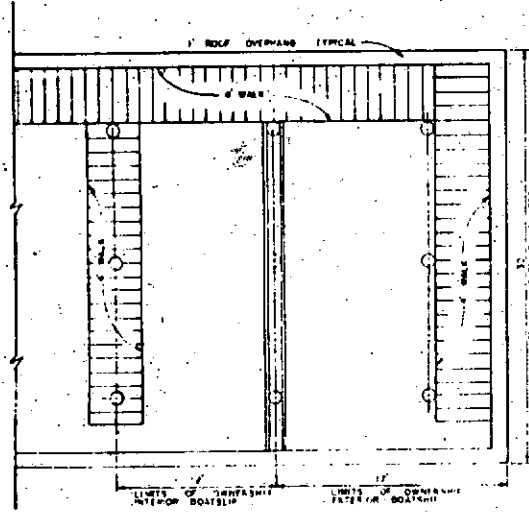


P.O.B. IS SOUTH 091.11° E EAST 6146.77'  
 FROM THE N.E. CORNER OF SEC. 3  
 T-8 S R-4-E LIVINGSTON PARISH, LA.



PINEY WOODS

CYPRESS SW



TYPICAL BOAT SLIP

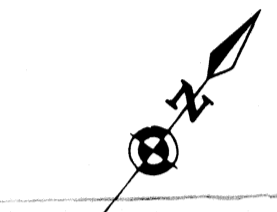
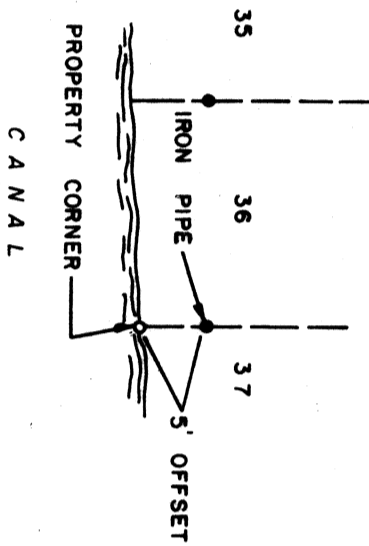
NOTE:  
 SERVITUDE FOR INGRESS & EGRESS ON  
 ALL BOAT SLIP WALKWAYS RESERVED  
 FOR R.P.P. LOT OWNERS & THEIR INVITEES.

#2131740

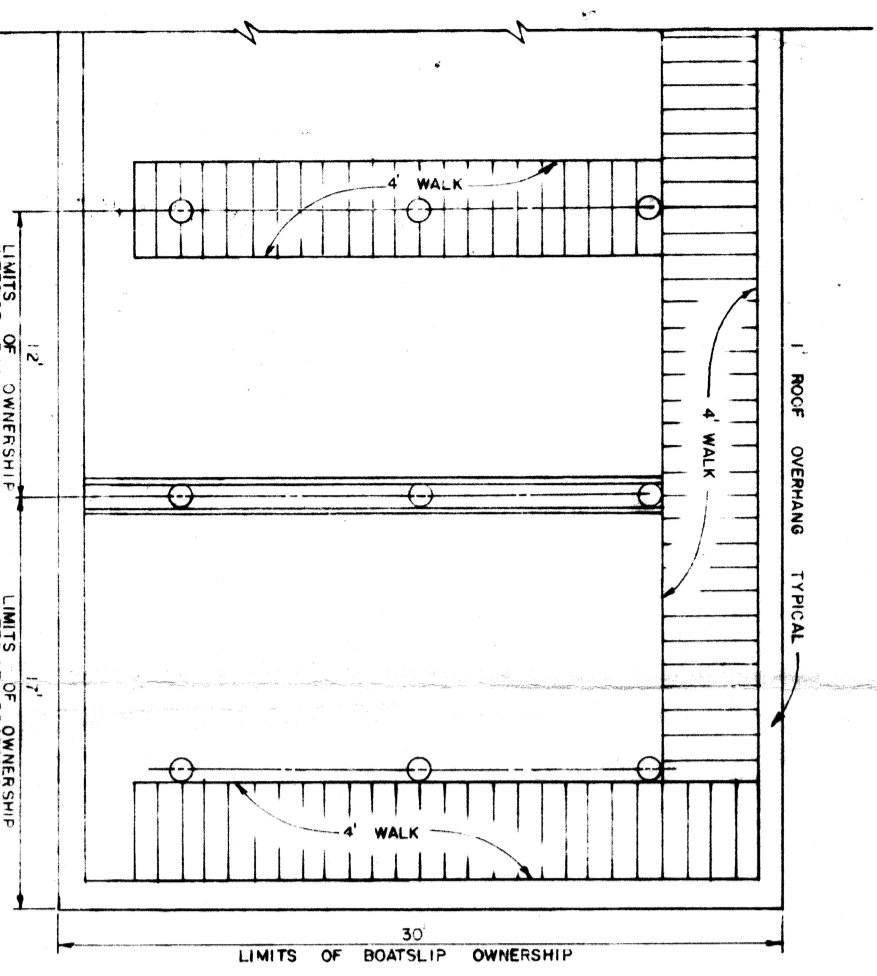
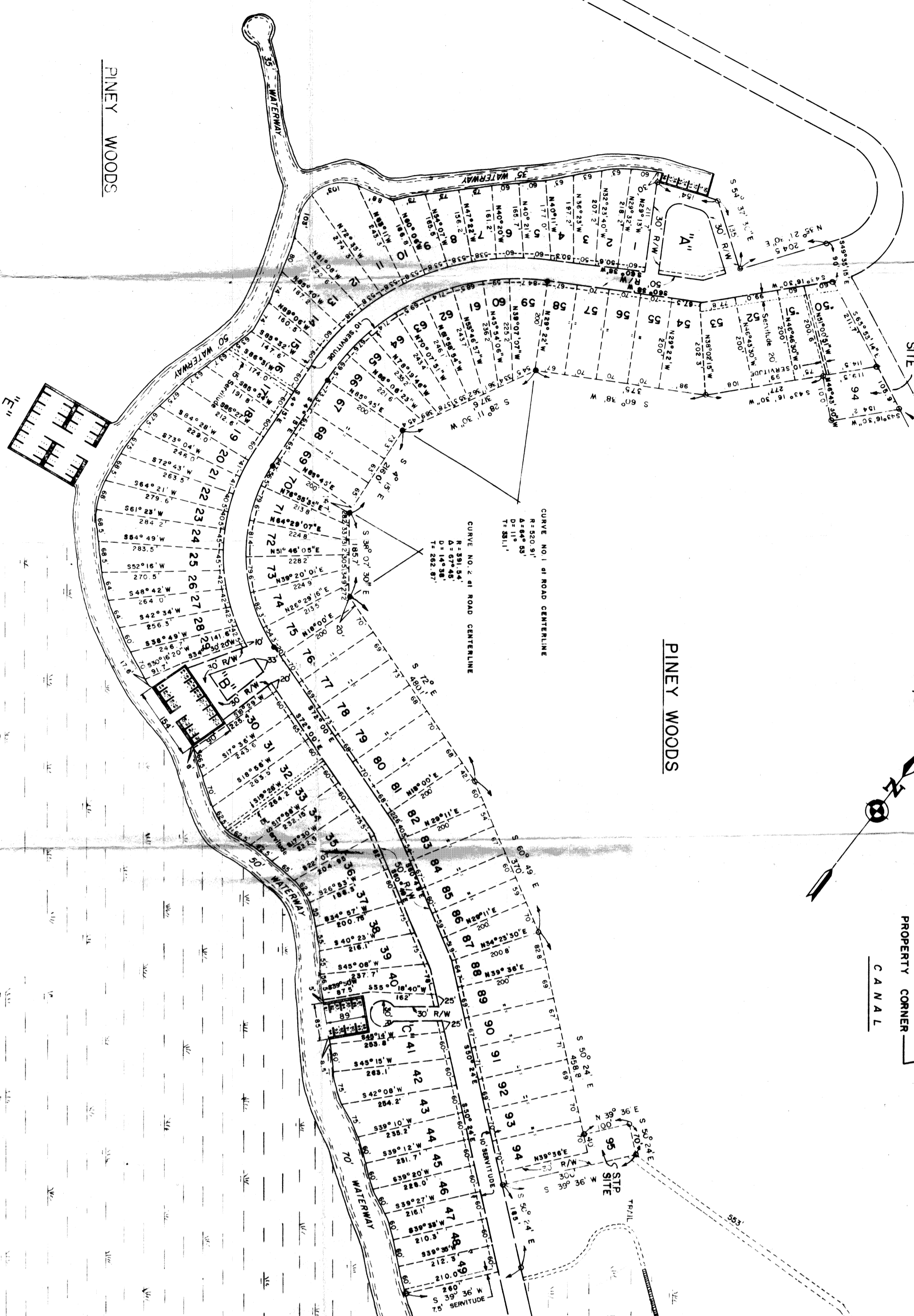
DATE	REVISION	BY	DATE	REVISION	BY

**BODIN AND WEBB**  
 CONSULTING ENGINEERS  
 HAMMOND, LOUISIANA

NOTE  
 LOTS No. 1 THRU 49 - ALL IRON PIPES  
 ALONG REAR LINES ARE OFFSET 5 FT.  
 FROM ACTUAL PROPERTY CORNER.



P.O.B. IS SOUTH 39.11° EAST 846.77'  
 FROM THE N.E. CORNER OF SEC. 3  
 T-8-S, R-6-E, LIVINGSTON PARISH, LA.

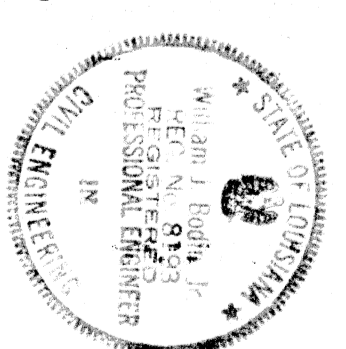


NOTE:  
 SERVITUDE FOR INGRESS & EGRESS ON  
 THE REAR LINES OF LOTS 1 THRU 49  
 FOR R.P.P. LOT OWNERS & THEIR INVITEES.

# 131,740

6 MILES TO  
 LAKE MAUREPAS

**PHASE I  
 RIVER PINES PLANTATION**  
 A survey and subdivision of a parcel  
 of Land Located in Sec. 38, T-8-S,  
 R-6-E, Livingston Parish, La.



certified correct  
**BODIN & WEBB  
 CONSULTING ENGINEERS  
 and LAND SURVEYORS**

DA	REVISION	BY	DATE	REVISION	BY	DATE	DESIGNED	WJB	SCALE	# 131,740	LOT LAYOUT TITLE	PROJECT NO. 1036 SHEET 2
							DRAWN	DSB	DATE:			
							CHECKED	JLB	OCTOBER 10, 1977			
							OWNER	R.P.P. CORP.				
							OWNER	BODIN AND WEBB CONSULTING ENGINEERS HAMMOND, LOUISIANA				