

PHASE III
RIVER PINES PLANTATION
 A SURVEY AND SUBDIVISION OF A
 PARCEL OF LAND LOCATED IN SEC 38,
 T-8-S, R-6-E, LIVINGSTON PARISH, LA.

PHASE III - RIVER PINES PLANTATION
 28 Lots, Section 38, T8S, R6E
 SCHOOL DISTRICT - Springfield
 UTILITIES: Sewer & Water - RIVER PINES UTILITY Co.
 Controlled by: PUBLIC SERVICE COMMISSION
 Electric - DIXIE ELECTRIC
 Telephone - SOUTH CENTRAL BELL

DEVELOPER James D. Scherer - PRESIDENT
 RIVER PINES PLANTATION CORP.
James H. Scherer
 POLICE JURY PRESIDENT

CERTIFIED CORRECT:
[Signature]
 BODIN and WEBB, Inc.
 CONSULTING ENGINEERS
 LAND SURVEYORS

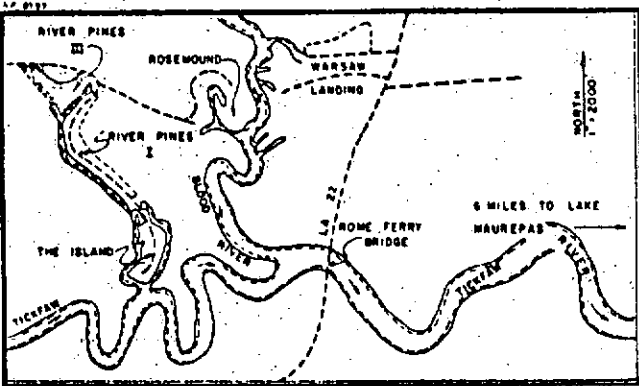
7212135

3, INC.	RIVER PINES PLANTATION A DEVELOPMENT OF R.P.P. CORP. OWNER	DESIGNED: JAB	DATE:	LAYOUT OF RIVER PINES PLANTATION - PHASE III	PROJECT NO:
		DRAWN: JOM	JAN. 4, 1982		1036
		CHECKED: JAB	SCALE:		SHEET NO:
		APPROVED: WJB	1" = 50'	TITLE	2

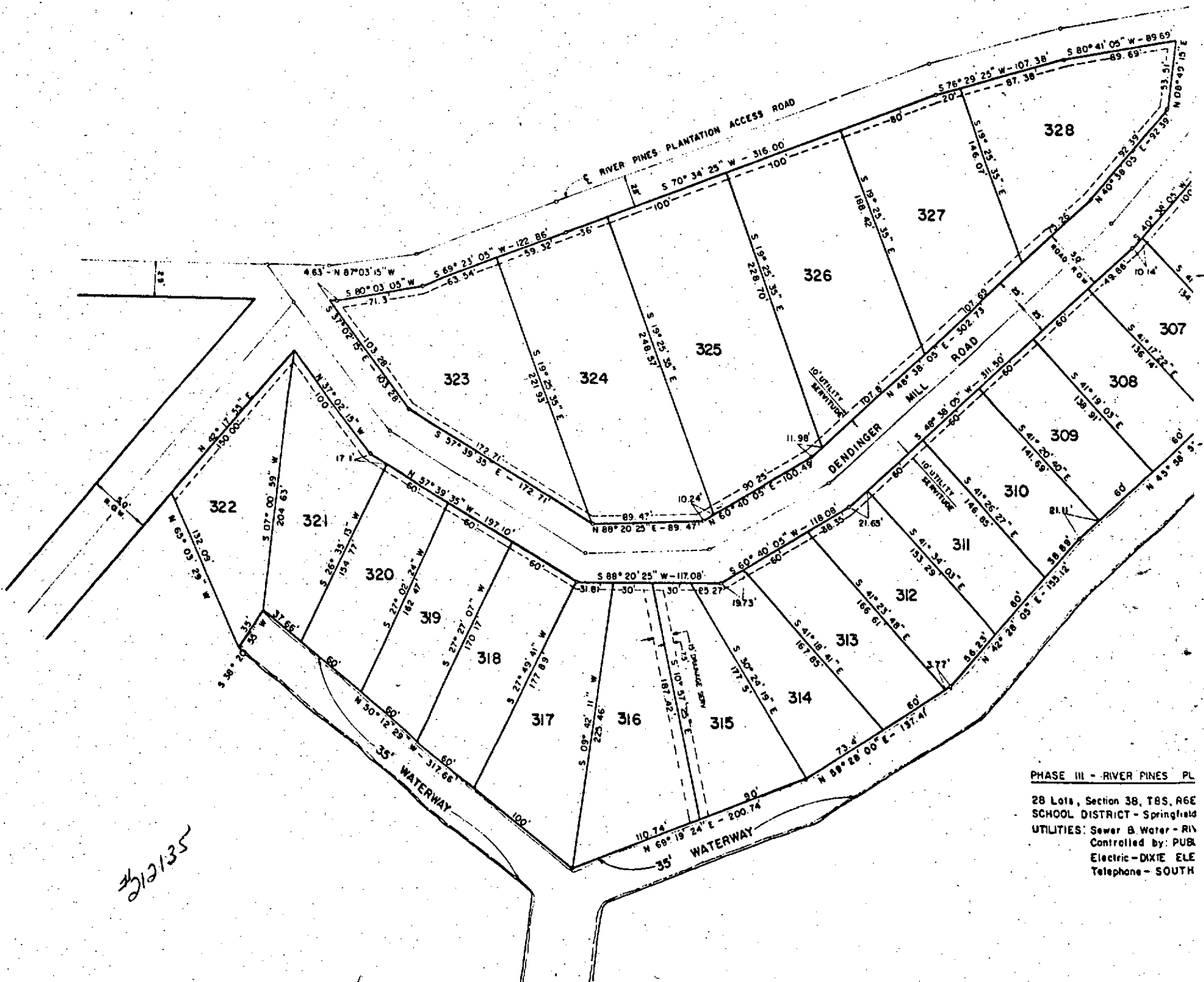
SEE ORIGINAL No. 712135

THEN COB BOOK 408

D.I. 16 **464**



VICINITY MAP



212135

PHASE III - RIVER PINES PL
 28 Lots, Section 38, T8S, R6E
 SCHOOL DISTRICT - Springfield
 UTILITIES: Sewer & Water - RIV
 Controlled by: PUBA
 Electric - DIXIE ELE
 Telephone - SOUTH

DATE	REVISION	BY	DATE	REVISION	BY
3-17-83	REVISED LOTS 12, 45 AND SERVITUDES				
8-25-83	REVISED LOT NUMBERS AND SERVITUDE				

BODIN AND WEBB, INC.
 CONSULTING ENGINEERS
 HAMMOND, LOUISIANA

RIVER PINES PLANTA
 A DEVELOPMENT OF R.P.P. CC