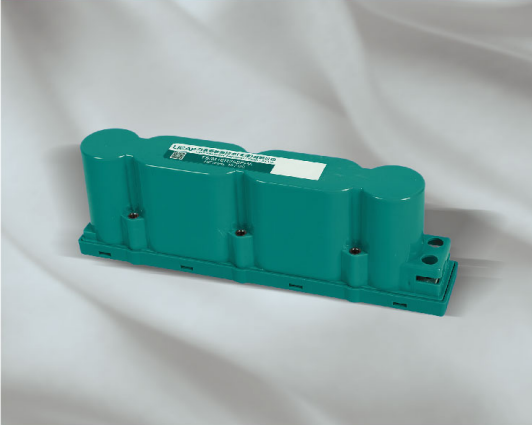


TS/M016V0058FPA



APPLICATIONS

- New Energy Vehicle
- Engineering Machinery
- Electrical Power System
- Industrial Equipment

FEATURES AND ADVANTAGES

- One Million Cycles Lifetime
- High Power Density
- Wide Range of Operation Temperature

Electrical Performance

Capacity	Rated Capacity	58F
	Capacity Tolerance	0/+20%
Voltage	Rated voltage	16V DC
	Surge Voltage	17V DC
Internal resistance	ESR(initial)	22mΩ
Electric current	Maximum leakage current (25°C , after 72h)	25mA
	Maximum continuous current	19A
Energy	Maximum peak current	200A
	Stored energy E_{stored}	2.1Wh
Power density	Energy density E_{max}	3.2wh/kg
	Power density P_{max}	4588W/kg

Temperature Features

Temperature features	Operating Temperature Range	-40 ~ +65°C
	Storage Temperature Range	-40 ~ +70°C

Monitor and Control

Alarm Monitor	Over voltage alarm	N/A
	Temperature monitor	N/A

Service Lifetime

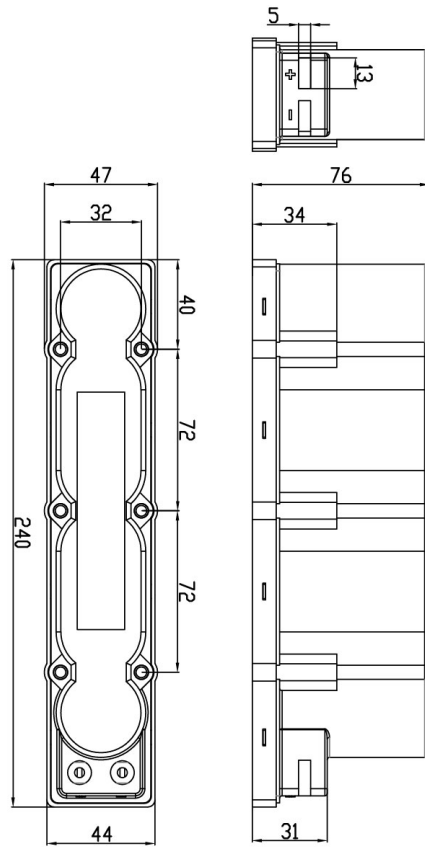
Lifetime Under Normal Temperature	Operated over 10 years under 25°C at rated voltage	
	Change in capacity	≤20%
Lifetime Under High Temperature	After operated for 1500h under 65°C at rated voltage	
	Change in internal resistance	≤100%
Storage Lifetime	4 years (under the highest storage temperature, uncharged)	
	1 million cycles between rated voltage and half rated voltage at 25°C with constant current	
Cycling Test	Change in capacity	≤20%
	Change in internal resistance	≤100%

Safety Specification and Mechanical Features

Safety	Insulation resistance	500V DC Insulation resistance ≥100MΩ
	Insulation intensity	5600V DC Leakage current ≤10mA
	Protection level	IP54
Mechanical Vibration	Operation vibration	GB/T 11287-2000
	Transportation vibration	GB/T 4798.2-2008
	Impact	GB/T 14537-1993

TS/M016V0058FPA

Outline Drawing (For Reference)



External Dimension

Weight	Unit: kg	≤0.65
Size	Unit: mm	240*47*76 (L*W*H)
Shell	Plastic shell	

Module Fastener (For Reference Only)

Position	Name	Specification	Material	Quantity	Torque
Module installation	Screw bolt	M4×40	Stainless steel 10.9 level	6	3N*m
	Flat gasket	Φ4		6	
	Spring gasket	Φ4		6	
	Nut	M4		6	
Module Output	Screw bolt	M5×10		2	6N*m
Terminal Installation	Flat gasket	Φ5		2	