

WARRIORS OFF ROAD

www.warriorsoffroad.com 562-682-7859

Trailer hitch for the HiSUN Sector 250

This hitch will mount on your 2015-2020 HiSUN Sector 250. No welding or cutting required. The hitch mounts on the two upper frame supports and connects to the frame using a strong 6 bolt clamp.

It is sometimes easier to either remove or get out of the way the two side panels on either side as in the photo below.

Side panel on each side can be easily removed to gain easier access to mounting the hitch. There is one phillip screw and one on the bottom and three allen bolts to remove panel. This panel does not have to be removed to install.



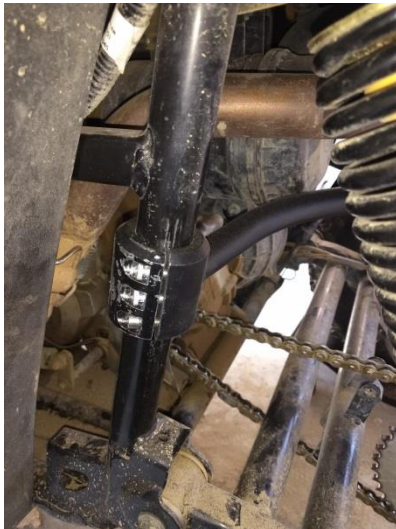
NOTE:

- “This hitch is not warrantied by HISUN. If you have a clutch failure, please remove the hitch prior to taking to dealer to avoid warranty problems.”
- Do not tow heavy loads as it might wear the clutch down prematurely.

Mount the hitch on both frame rails so that the hitch is level below the factory exhaust. If it is not level, it might be mounted upside down.



Mount on each frame rail with the supplied Allen wrench as high as possible to ensure the chain doesn't rub the hitch



Do not tighten the Allen bolts until they are all started evenly. You will still be able to gain access to the air filter with this hitch.

