

Filter-Blok™

EBCF-0200

DESCRIPTION

Filter-Blok™ is a molded rubber product with the ability to allow water to pass through while holding back debris and sediment. It has a unique bullnosed interlocking design that allows each blok to be fitted to each other. Filter-Blok™ is approved and used by many federal, state and local agencies.

SPECIFICATIONS

▪ Dimensions	24" x 12" x 4"
▪ Weight	28 lbs. – 14 lbs. per sq ft (80 pieces to a palette / 2290 lbs)
▪ Composition	recycled rubber & polyurethane binder
▪ Color	black
▪ Holes	two - 1.375" diameter; aligned for staking one course to the next
▪ Rainfall Capacity	1302 inches per hour / 430 GPM/yd ²
▪ Filtration/ Retention	Sand: Coarse 15-30 micron,99% ; Medium 5-15 micron, 3%; Fine <1 micron, 1%
▪ Freeze-Thaw (ASTM C1026)	Submersed in water to 0° F for five cycles Minimal small particle separation.
▪ UV Resistance	no change after 48 months exposure
▪ Flammability / Auto ignition	447° F
▪ Toxic Characteristic Leaching Procedure Method 6010B	Less than trace amounts of aluminum (Al), barium (Ba), cadmium (Cd), chromium (Cr), lead (Pb), selenium (Se) silver (Ag) chloride (Cl) and sulfate (SO) after 18 hours in fluid

APPLICATIONS

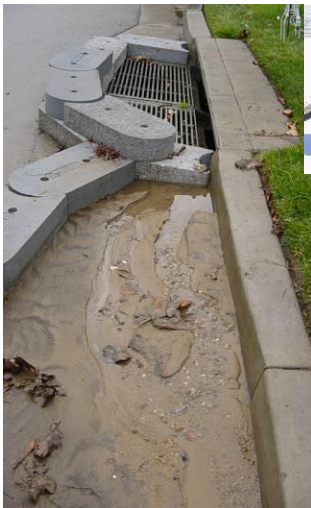
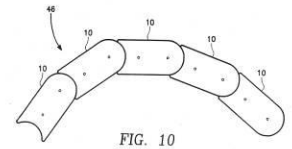
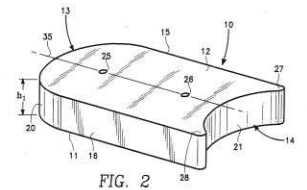
- Filtration and sedimentation of storm water runoff ; site maintenance
- Erosion control individually or as part of a SWPPP
- Drain inlet protection, oil well / pump protection
- Can be used alone or in conjunction with Barrier-Blok™ product for two-stage protection

FEATURES

- Durable – will not breakdown in outside elements
- Consistent size – one Eco-Blok™ replaces two typical sand / gravel bags
- Environmentally friendly – made from recycled tires – check local regulations for grant funding eligibility
- Easy to store, install and maintain
- Can be stacked, staked or glued in place
- Can be cleaned out with a hose in minutes and re-used over and over again.

OPTIONS

- Color and reflectors are available for additional charge. Please inquire with your needs.



Eco-Blok, LLC

