

The Whitman Middle School Project

School Building Committee // June 11, 2024

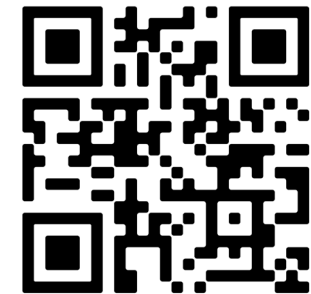


Agenda

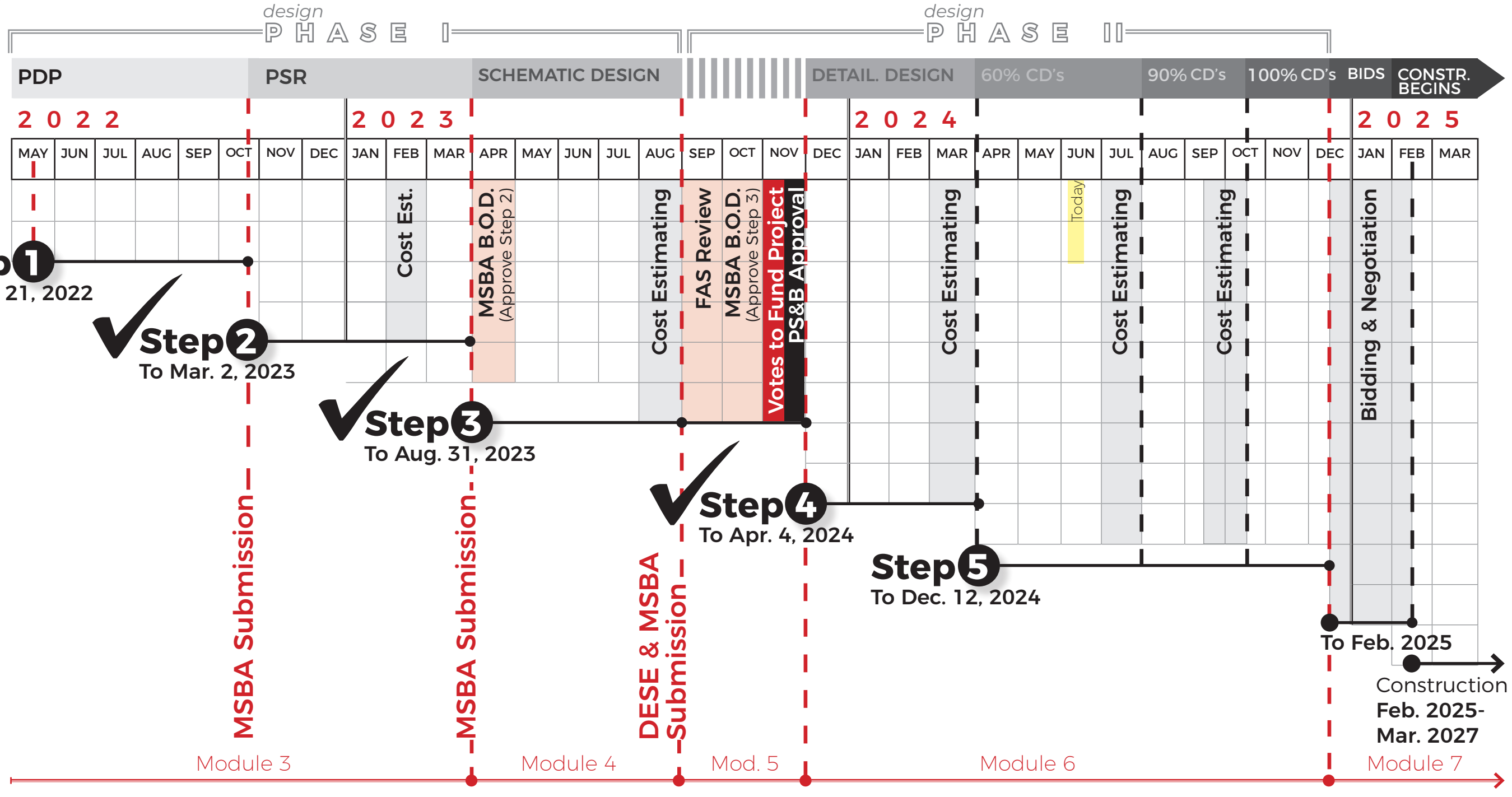
- // Schedule Overview
- // Design Update
 - / Existing Concessions Stand
 - / Interior Design Concepts
- // Next Steps & Upcoming Milestones

www.wmsproject.org

Whitman Middle School
Project Website

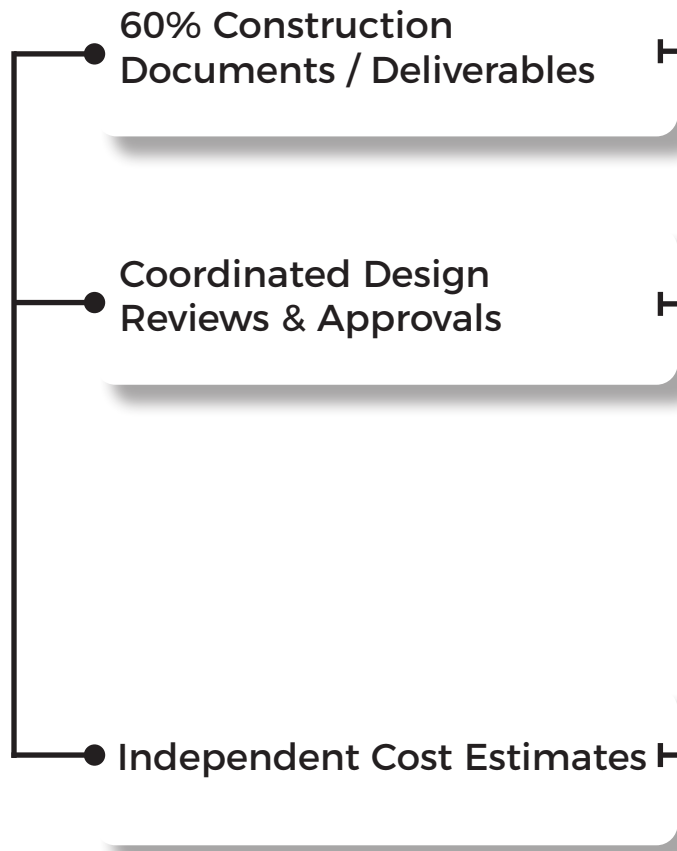


WMS Project Schedule Overview



Step 5 Construction Documents Submission

60% CDs
Apr. - Aug. 2024



	APR	MAY	JUN	JUL	AUG	SEP
+ 60% Construction Documents (CDs)						
+ Architectural Documents						
+ Site/Landscape Documents						
+ Engineering & Consultant Documents						
+ 60% CDs Project Manual & Proprietary Items						
+ 60% CDs Narratives & Calculations						
- Systems/Energy Life Cycle Cost Analysis						
- Acoustic, ADA, & Code Reviews + Reports						
- Security & Visual Oversight Review						
- Facility & Maintenance Review						
- Commissioning Agent Review						
- Structural Design Peer Review						
- Zoning Board of Approvals						
- MA Architectural Access Board Review						
+ 60% CDs for Cost Estimating						
- Designer's Construction Cost Estimate						
- OPM Construction Cost Estimate						
- Reconciliation & Comparative Analysis						
- Value Engineering						

2024 Notable Dates (Proposed):
Jun. 11 // Community Forum
July 23 // Building Committee
Aug. 01 // MSBA CD Submission

Sending cost estimating and review documents out this week!
Estimates and reviews are due the third week of July

- Completed
- Initiated
- Pending

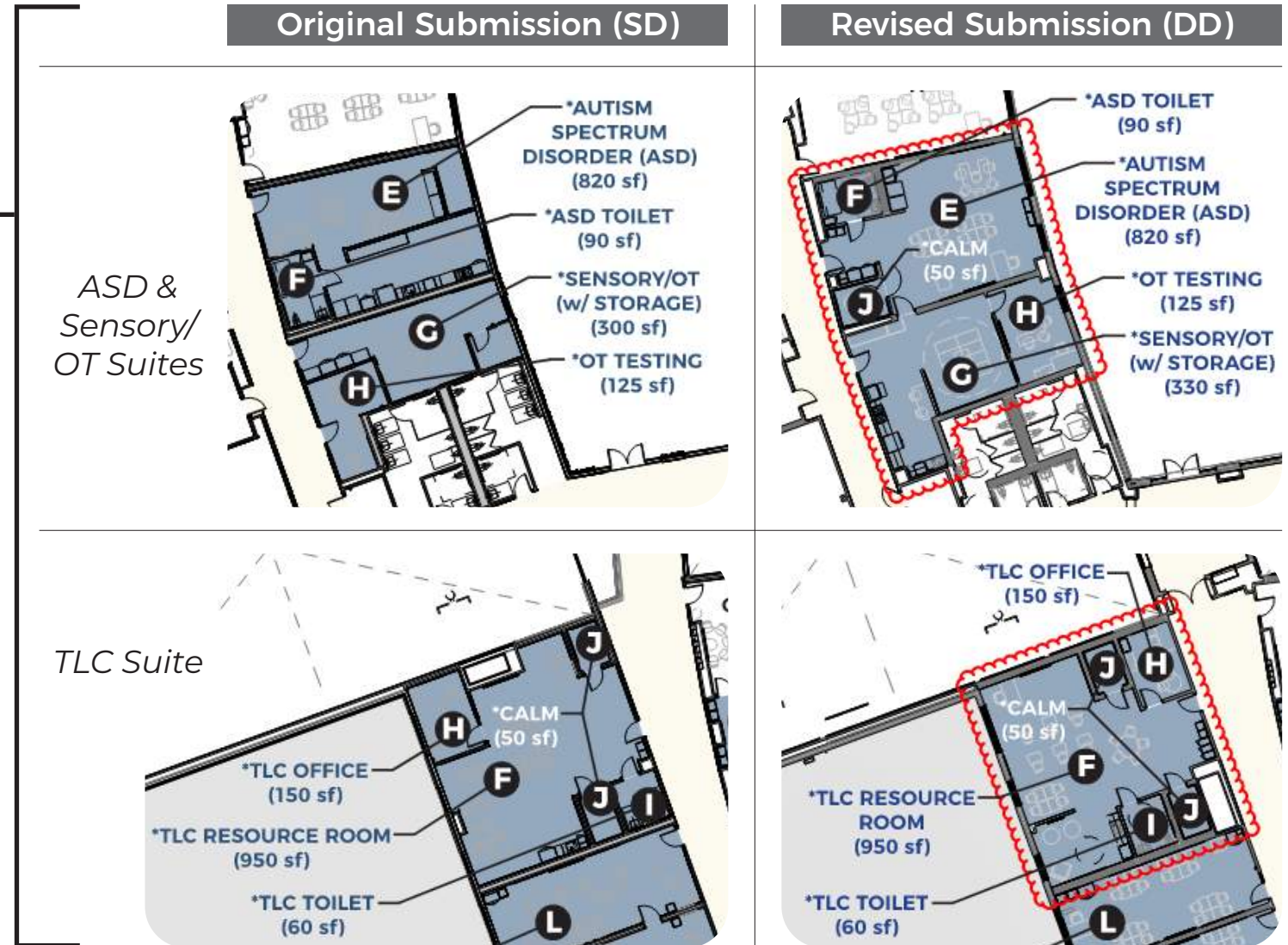
Recap of May Activities

MSBA DESIGN STATUS MEETING

- // On May 22, 2024 the MSBA requested a design status meeting to:
 - / Review Design Progress from SD to DD
 - / **Confirm DESE Resubmission**
 - / Review upcoming MSBA Modules 6-8
- // This is a check-in meeting typical of all MSBA projects when transitioning phases

EARLY BID PACKAGES DISCUSSION

- // The OPM, Designer, and electrical/mechanical engineers met to discuss the possibility of releasing early bid packages
- // Avoids delays during construction for equipment that typically has a long lead time
- // The professional team recommends releasing (1) early bid package:
 - / **Electrical - Switchgear & Generator**
- // Estimated release shall be early Oct. 2024



Design Update



Existing Concessions Stand

Proposed Scope Adjustment: Maintain Existing Location

Existing Concessions Stand Re-located



Existing Concessions Stand Location



// Since PSR, the project estimates have included re-locating the existing concessions stand as a savings to constructing a new stand/toilet facility

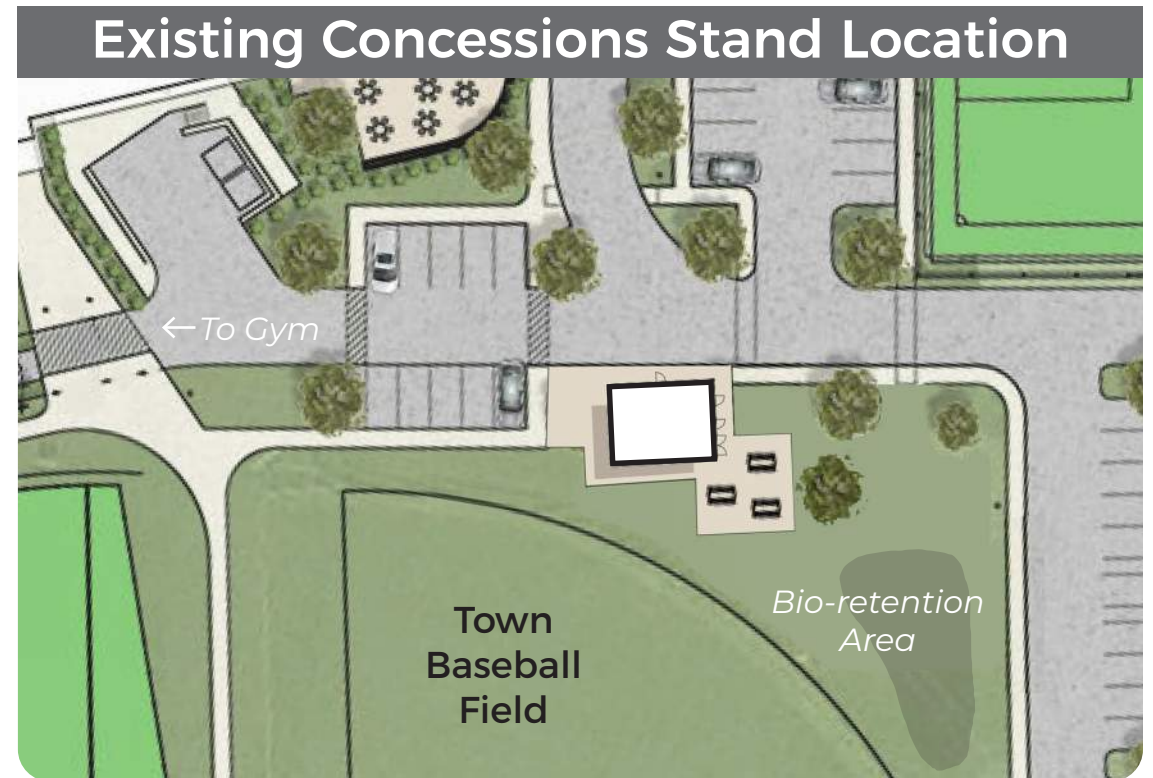


// The existing concessions stand/toilet facility is a CMU block building with a slab-on-grade

Existing Concessions Stand

Proposed Scope Adjustment: Maintain Existing Location

- // The professional team **recommends maintaining the current location** of the existing concessions stand
- / Its current location has little impact on the project's site design, other than possibly relocating an existing utility pole
- / Its CMU construction isn't as conducive to moving as a metal building, for example
- / Its utilities (electric & plumbing) are completely separate from the existing school already
- / Avoids impacting the sports lighting and scoreboard, which is powered from the stand
- / Avoids impacting the circuits within the red shed at the center of the Town fields, which are likely fed from the stand
- // There is a financial benefit to maintaining the existing concessions stand location:



Costs to Relocate Existing Concessions Stand	
<i>(DD Cost Estimates March, 2024)</i>	
<i>Relocate existing concessions</i>	\$80,000
<i>Allowance for utility connections</i>	\$15,000
<i>Markups (approx. 15%)</i>	\$17,000
Total	\$112,000

Estimated Savings to Construction Cost

\$112,000

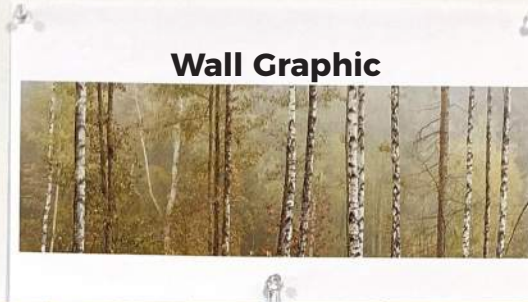


A Foliage-Inspired Palette

Blending the Exterior w/ the Interior



Exterior Metal Panels



Wall Graphic



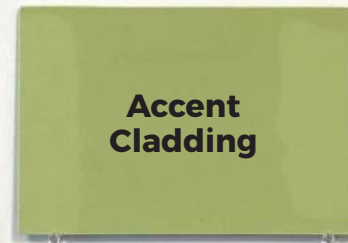
Acoustic Panels



Interior Paint Colors



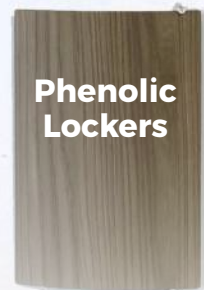
Linoleum Flooring



Accent Cladding



Tack Surface



Phenolic Lockers



Wood Elements



Wainscot Cladding

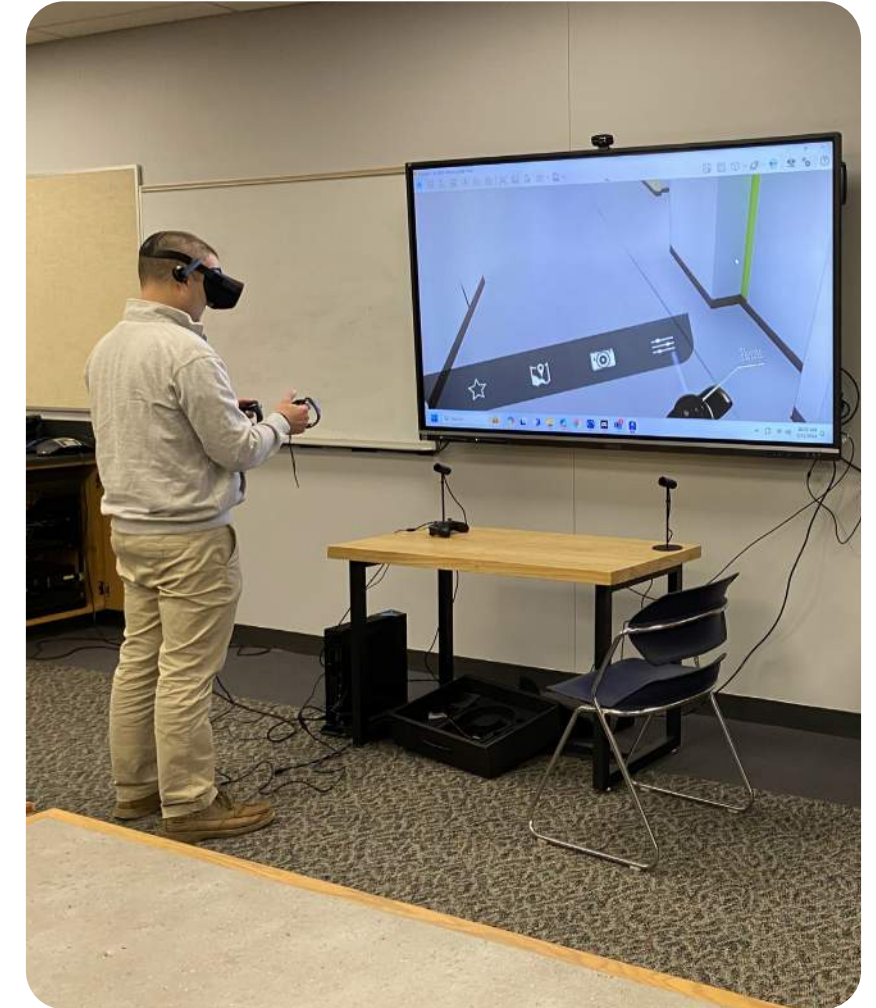


Accent Cladding



Interior Design Concepts

Materials, Colors, Branding, & Schemes - Visualization & Feedback



In May, school administrators had the opportunity to "walk" through the new building, getting a better sense of its features, scale, and views!

Interior Design Concepts

Main Street & Community Spaces

Custom graphic signage with historic content of Whitman along this wall

Custom graphic signage for WMS
possibly as backdrop for photos

CONFERENCE

Interior Design Concepts

Main Street & Community Spaces

Work with WHRSD
to determine
messaging / signage
throughout

MAKE EACH DAY
YOUR
MASTERPIECE

MEDIA CENTER

Interior Design Concepts

Main Street & Community Spaces



Interior Design Concepts

Typical Academic Wings

Tack Surface

Write-able Collaboration Wall

Opportunities for personalization & integration of natural/textural materials



Phenolic Lockers

Interior Design Concepts

Athletic Community Spaces



Fabric-wrapped
Acoustic Panels

Artificial turf in
Multi-purpose/
Wellness space

Next Steps & Upcoming Milestones

Whitman Middle School Project

JUNE

Su	Mo	Tu	We	Th	Fr	Sa
						1
2	3	4	5	6	7	8
9	10	11	12	13	14	15
16	17	18	19	20	21	22
23	24	25	26	27	28	29
30						

JULY

Su	Mo	Tu	We	Th	Fr	Sa
	1	2	3	4	5	6
7	8	9	10	11	12	13
14	15	16	17	18	19	20
21	22	23	24	25	26	27
28	29	30	31	1		

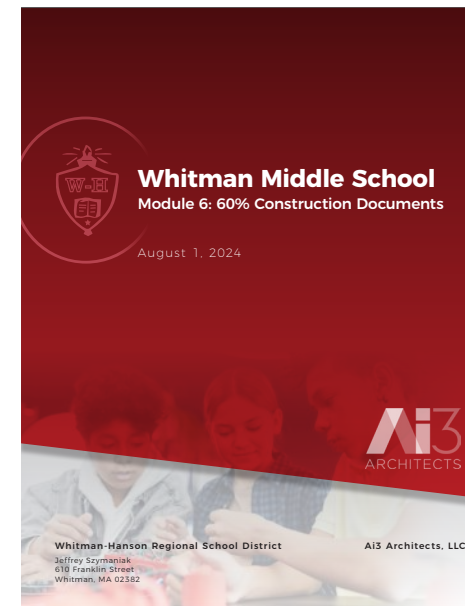
- June 11 // SBC Meeting / Community Forum #7
- June 13 // Documents sent to Cost Estimators
- July 11 // Cost Estimates Due
- July 15 // Cost Estimate Reconciliation / Value Engineering (if necessary)
- July 18 // Reconciled Estimates Due
- July 23 // SBC Meeting to Approve 60% CDs Submission to the MSBA
- Aug. 01 // 60% CDs Submission to the MSBA

60% CDs Submission

THURSDAY

AUG 01, 2024

Due to the MSBA



Submission of the 60% Construction Documents (CDs), Project Manual, and Report



Questions?

Thank you

www.wmsproject.org

