

Whitman Middle School

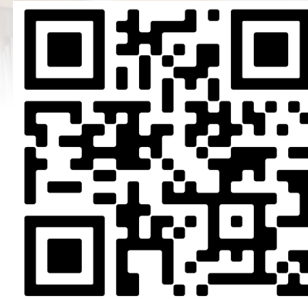
School Building Committee // May 23, 2023

Agenda

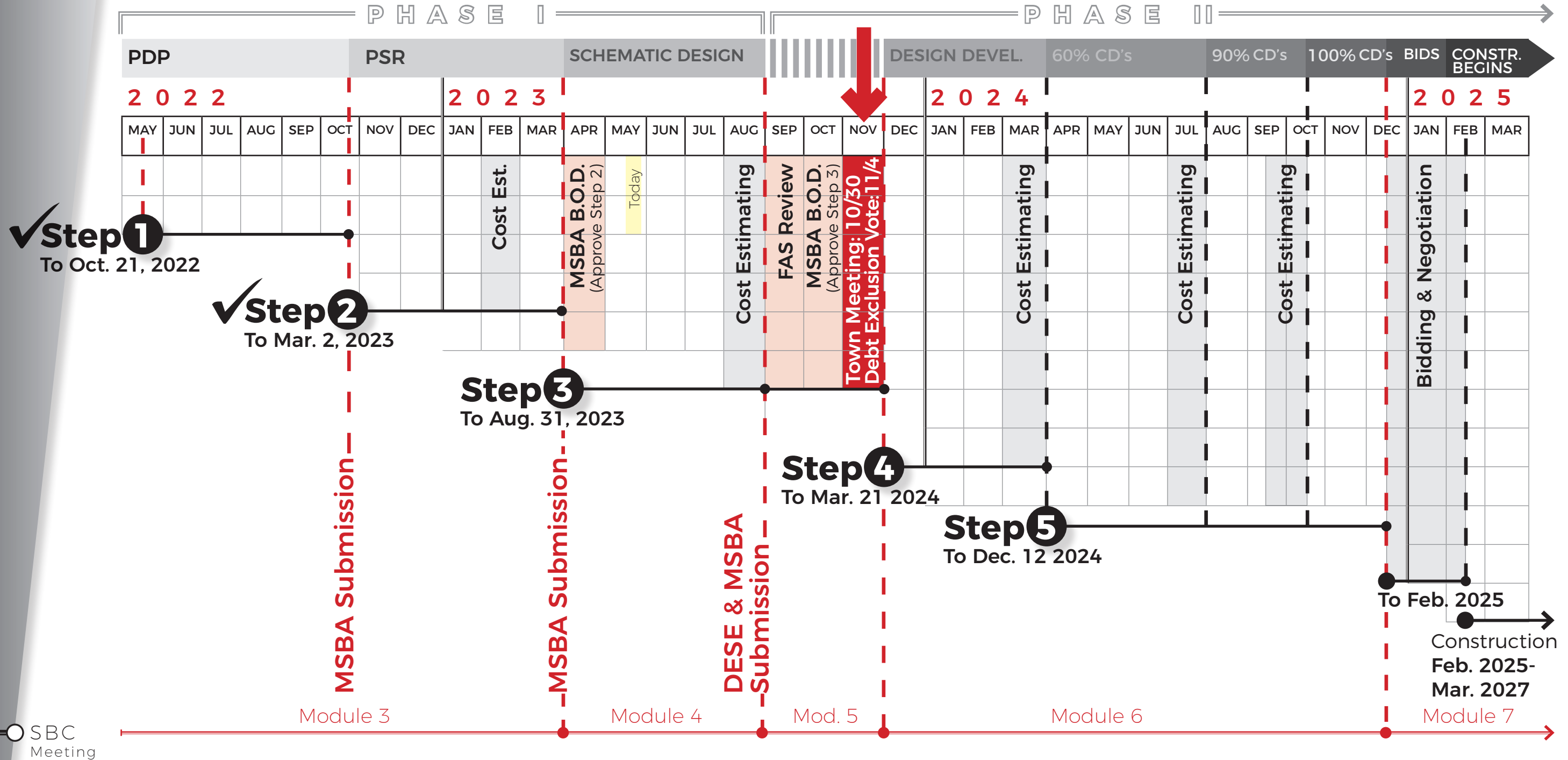
- // Schematic Design (SD) Activities & Milestones
- // Design Update
 - / Exterior Envelope & Massing Study
 - / Floor Plans
- // **VOTE** to Approve M.O.U. for Mass Save Path 1
- // Upcoming Events

www.wmsproject.org

Whitman Middle School
Project Website

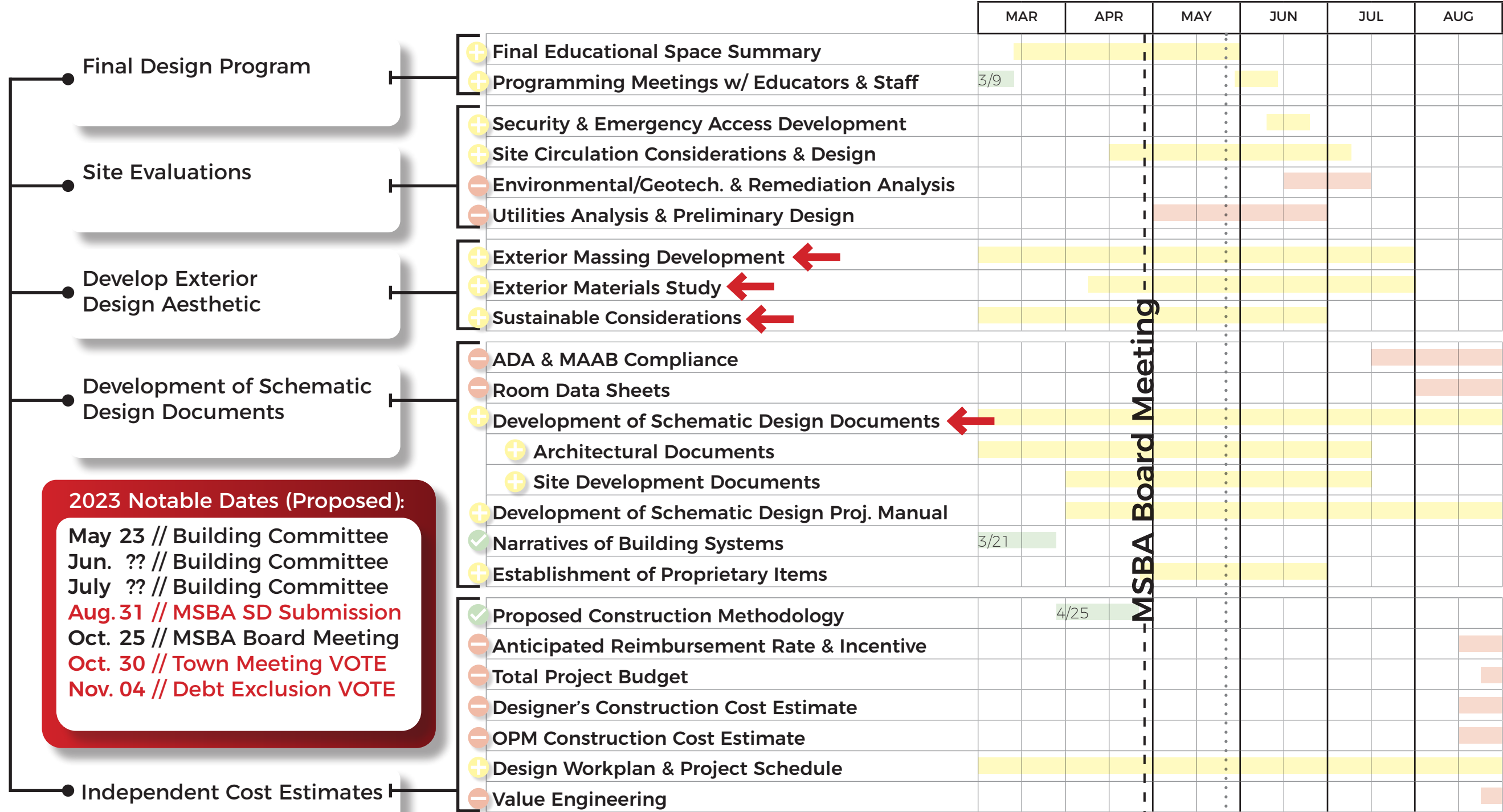


WMS Project Schedule Overview



Step 3 Schematic Design (SD) Submission

Apr. - Oct. 2023



2023 Notable Dates (Proposed):
 May 23 // Building Committee
 Jun. ?? // Building Committee
 July ?? // Building Committee
Aug. 31 // MSBA SD Submission
 Oct. 25 // MSBA Board Meeting
 Oct. 30 // Town Meeting VOTE
 Nov. 04 // Debt Exclusion VOTE

Completed
 Initiated
 Pending

Design Update



Exterior Envelope & Massing Study

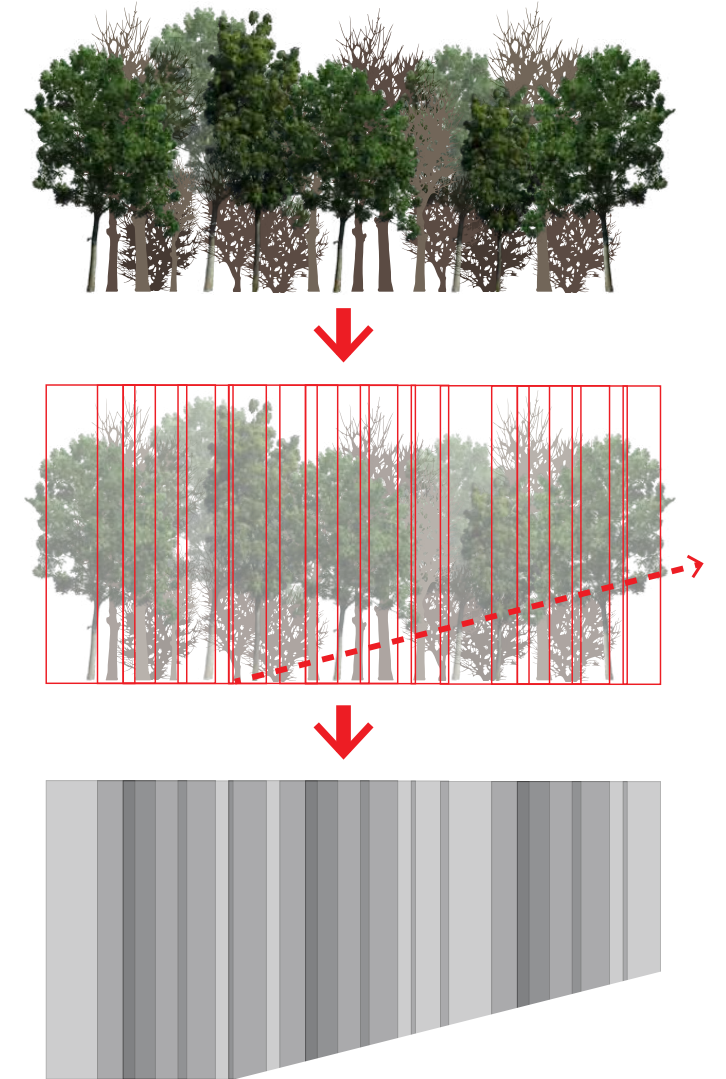
Acknowledging the Site Context



Backdrop of
Proposed Building

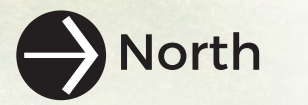
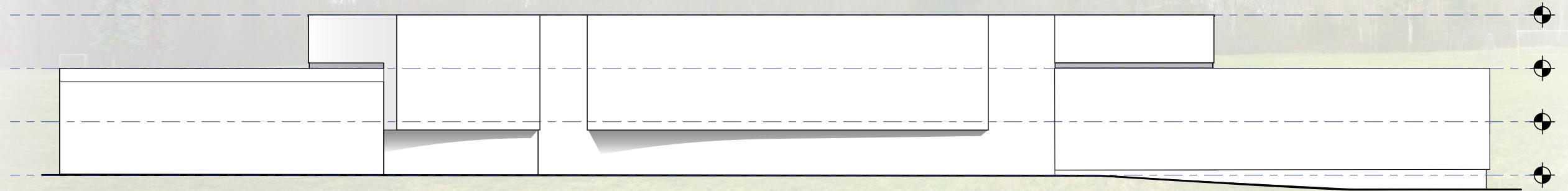
Aspects of the tree line:
filtered light,
perceived depth,
vertical in nature,
covering overhead

Lends itself to a system of
vertically-oriented elements
and panels that create
shading & visual interest



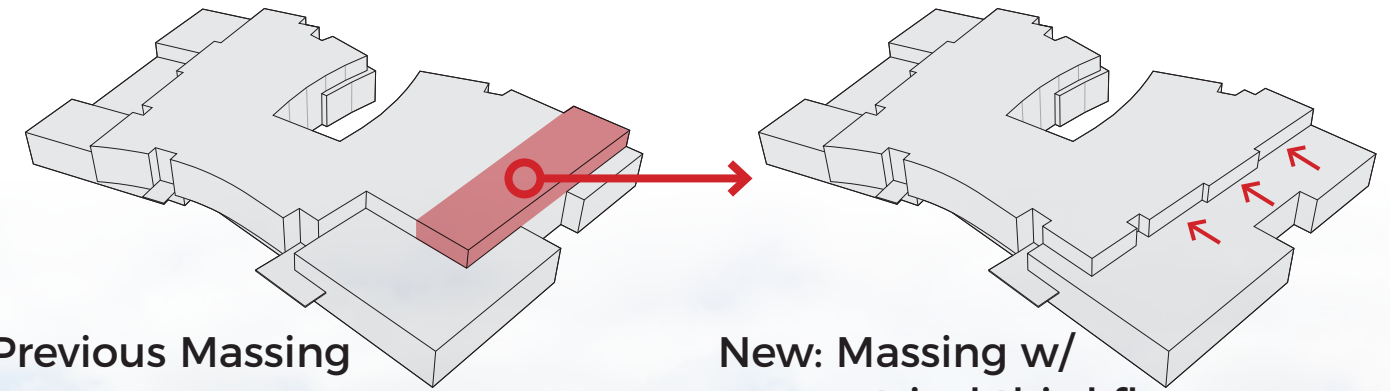
Exterior Envelope & Massing Study

Current Massing from Front Approach (East)



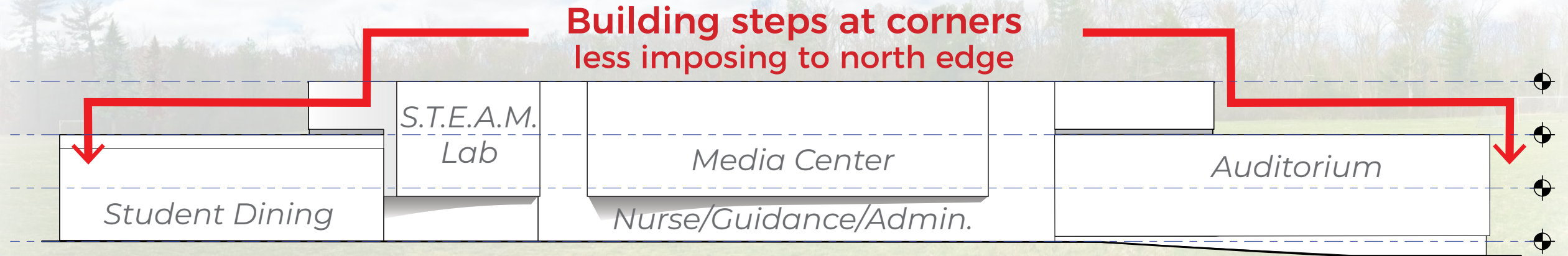
Exterior Massing Study

Massing Adjustments



Previous Massing

New: Massing w/
symmetrical third floor



Building steps at corners
less imposing to north edge

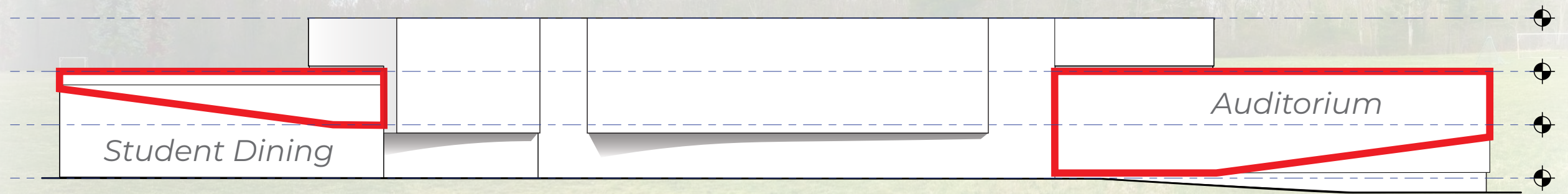
Featured spaces along front facade



Exterior Envelope & Massing Study

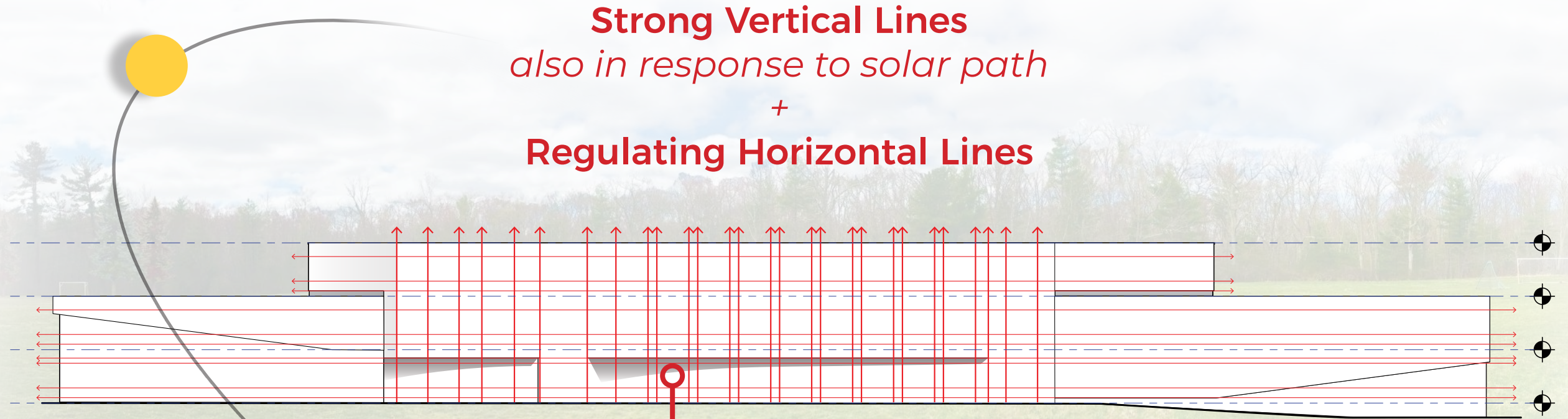
Massing Adjustments

Overhead canopy-like features
at plazas and outdoor classroom



Exterior Envelope & Massing Study

Establishing a System



Strong Vertical Lines
also in response to solar path
+
Regulating Horizontal Lines

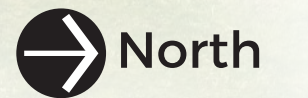
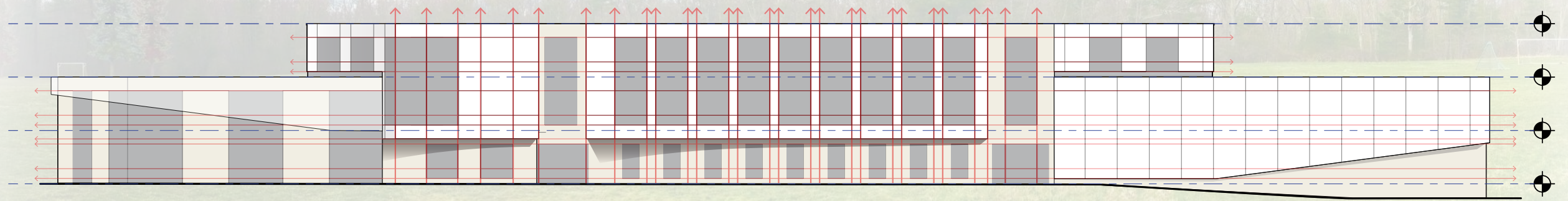
**A system of regular lengths/widths
for efficiency & economy**
*Proportions may modify based on
material selections*



Exterior Envelope & Massing Study

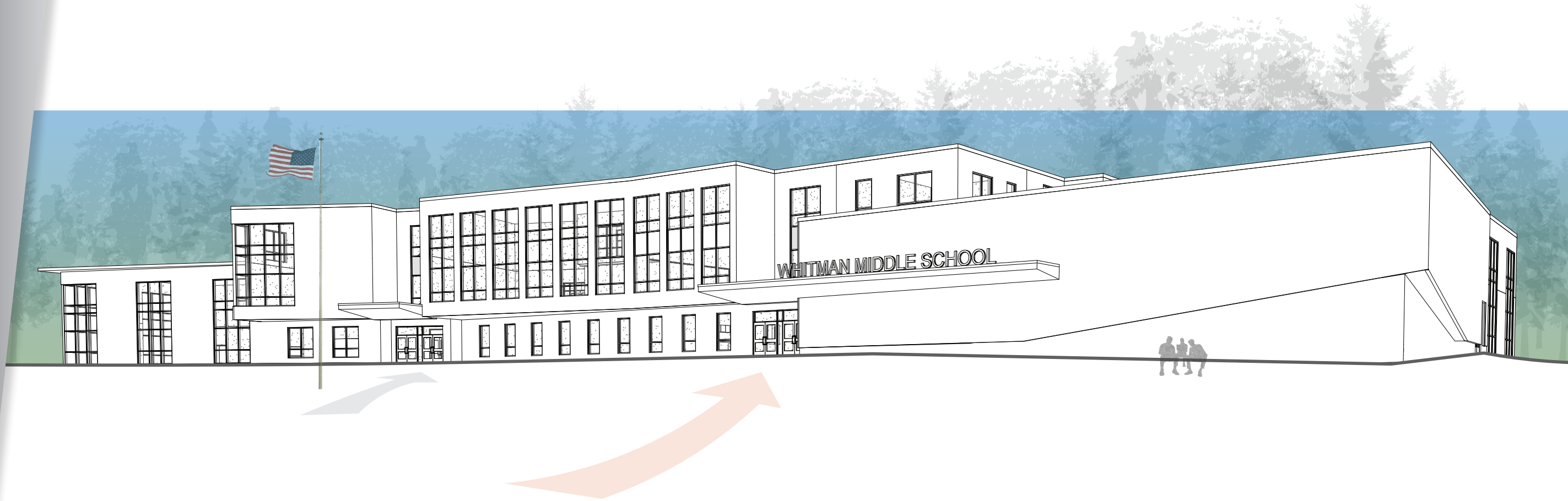
Solid / Void Within a System

Integration of Glass into Envelope
conscious of window-to-wall ratio for energy efficiency & economy



Exterior Envelope & Massing Study

DRAFT Northeast Corner Perspective

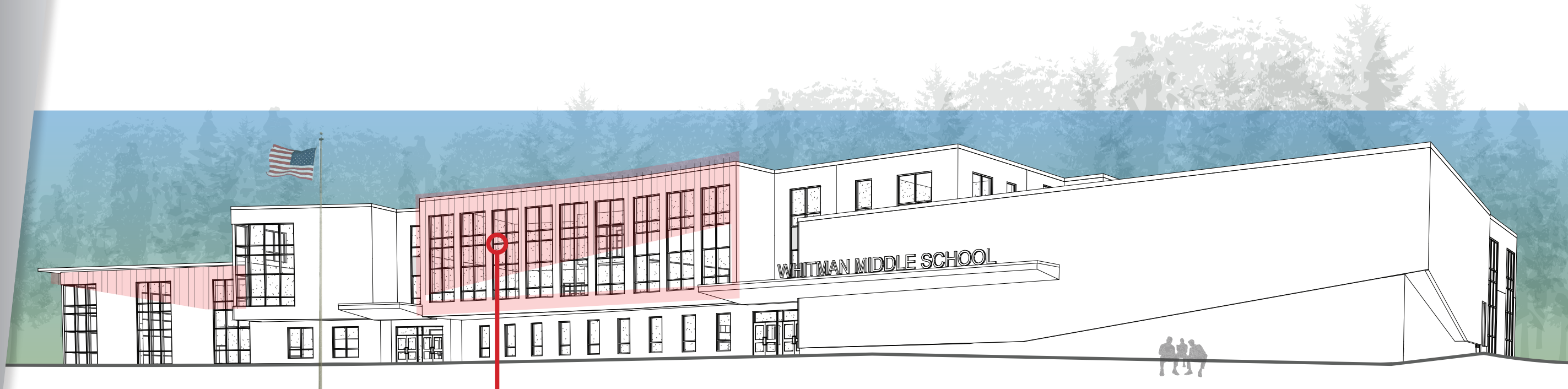


**Investigating design methods to
identify the primary entry**



Exterior Envelope & Massing Study

DRAFT Northeast Corner Perspective



Investigating solar shading devices that are incorporated into the envelope



Exterior Envelope & Massing Study

DRAFT Southeast Corner Perspective



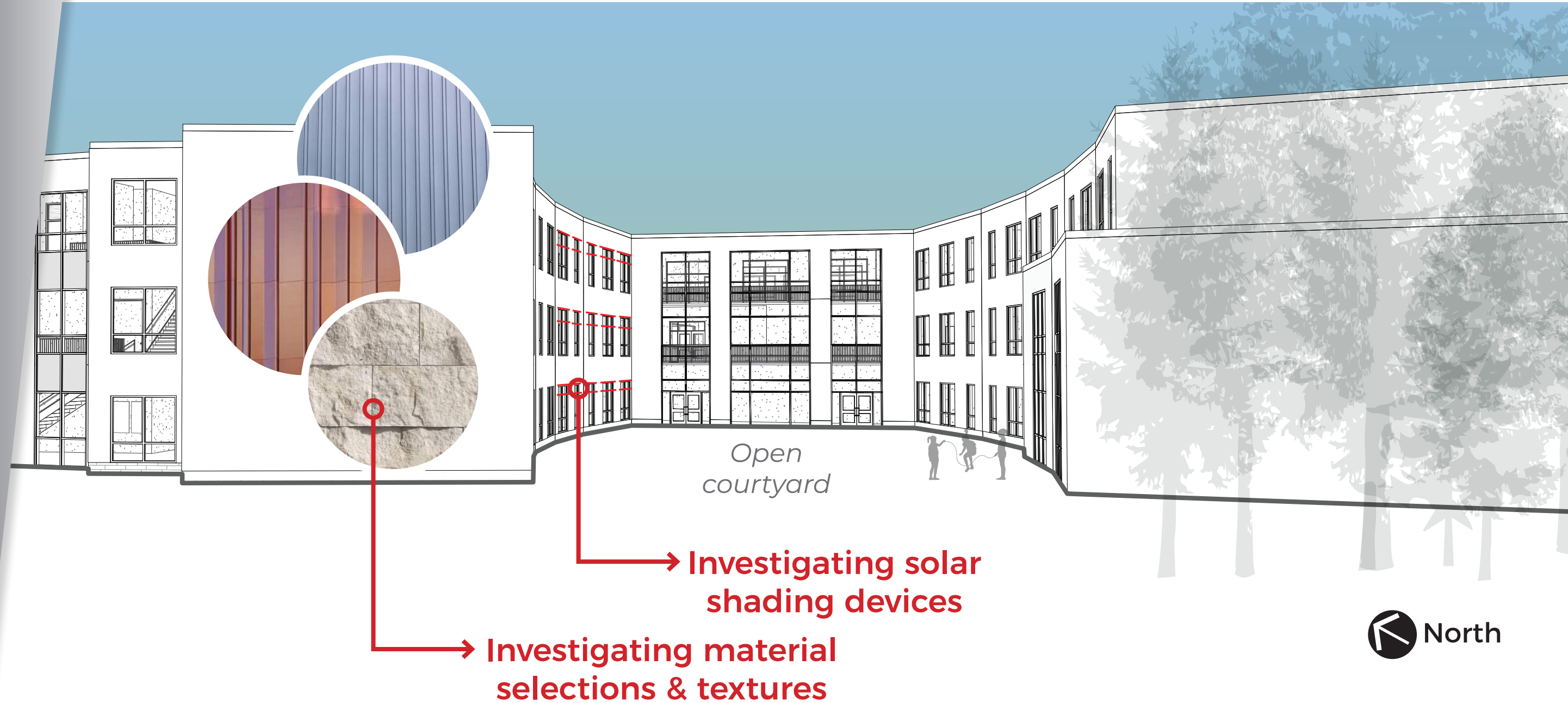
→ Plentiful daylight for student dining

→ Daylight for Media Center



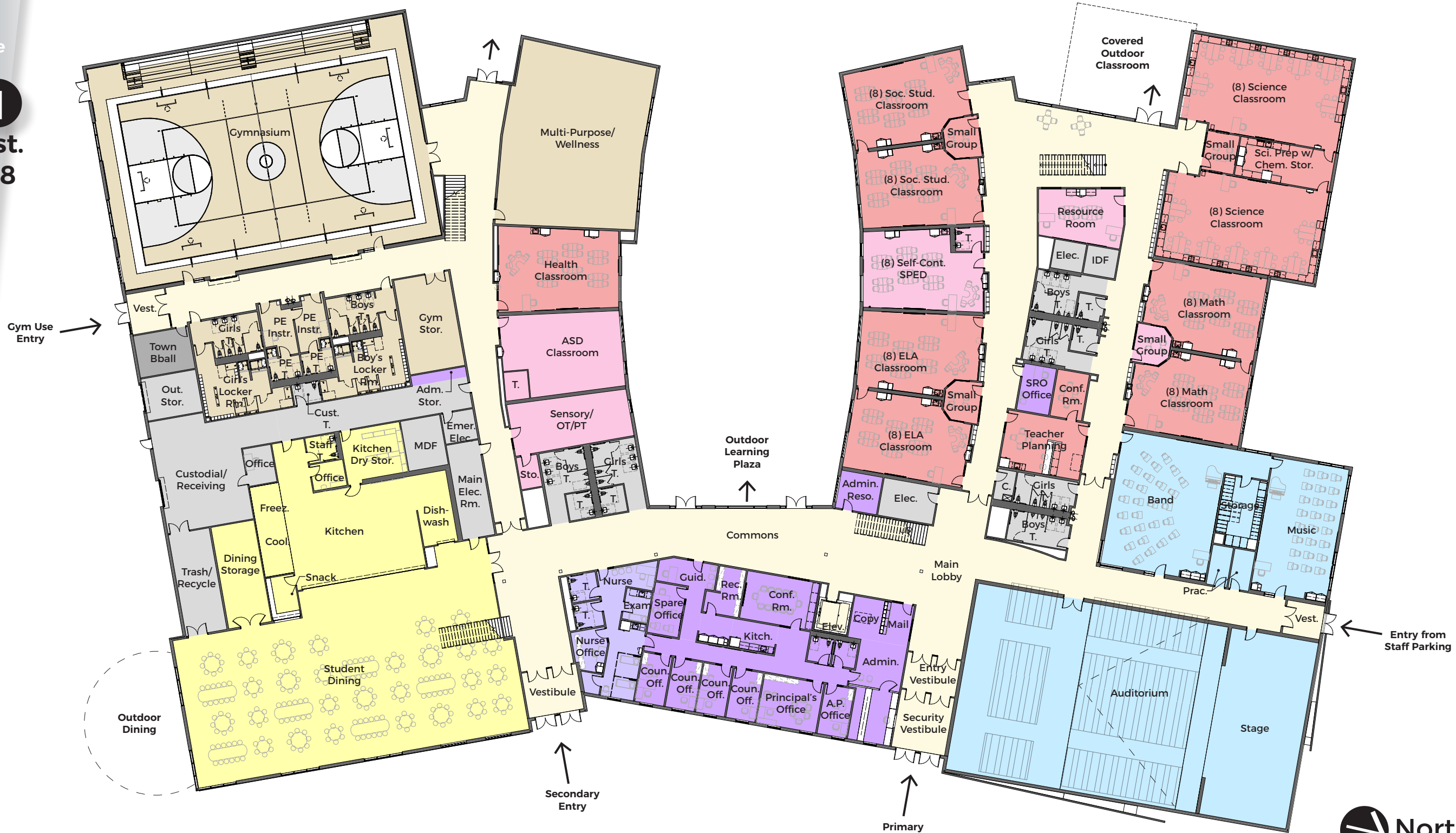
Exterior Envelope & Massing Study

DRAFT West & Courtyard Perspective



Plan 1

New Const.
Grades 5-8



Plan 2

New Const.
Grades 5-8



Plan 3

New Const.
Grades 5-8



VOTE on Memorandum of Understanding

Energy Goal Pathway for the
Whitman Middle School Project:



VOTE from 4/25/23

Mass Save Path 1

Commitment to a Net Zero & Low EUI
Building (EUI of 25 or less)

**\$2.00/sf Incentive* = \$277,208 +
\$1.50/sf Post Occ. Bonus* = \$207,906**

**1-time pay out following construction*

Next Step: Sign the M.O.U.

VOTE

to approve the Memorandum of
Understanding for Path 1: Net
Zero & Low EUI Building

Coming Soon:

**Sign an Engineering Services Agreement
(ESA), committing to cost sharing the
services of the ZNE technical expert**

Upcoming Events

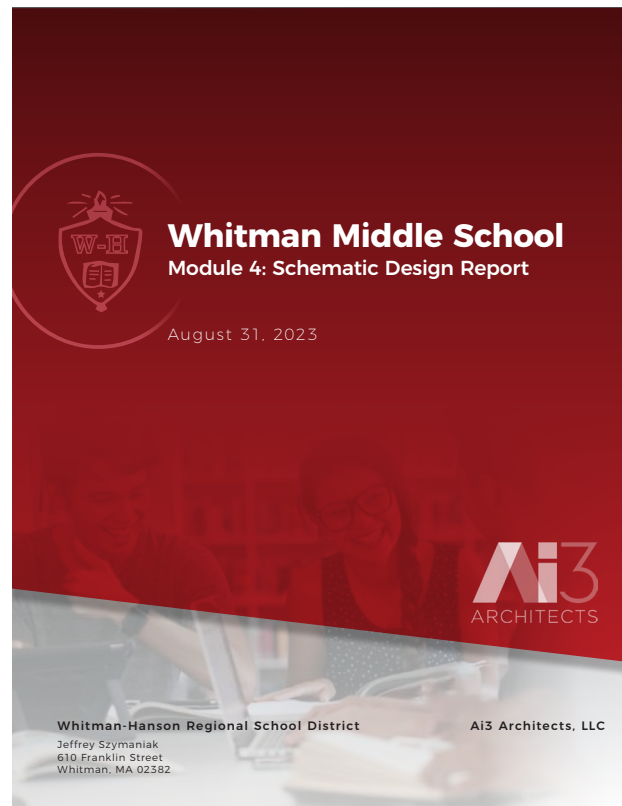
Dates & Content

SD Submission

THURSDAY

AUG 31, 2023

Due to MSBA



Submission of
the Schematic
Design (SD)
Documents,
Project Manual,
& Report

Town Meeting VOTE

MONDAY

OCT 30, 2023

Debt Exclusion VOTE

SATURDAY

NOV 4, 2023



Questions?

Thank you

www.wmsproject.org

**Whitman Middle School
Project Website**

