



Whitman Middle School

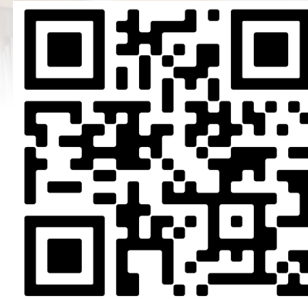
School Building Committee // July 18, 2023

Agenda

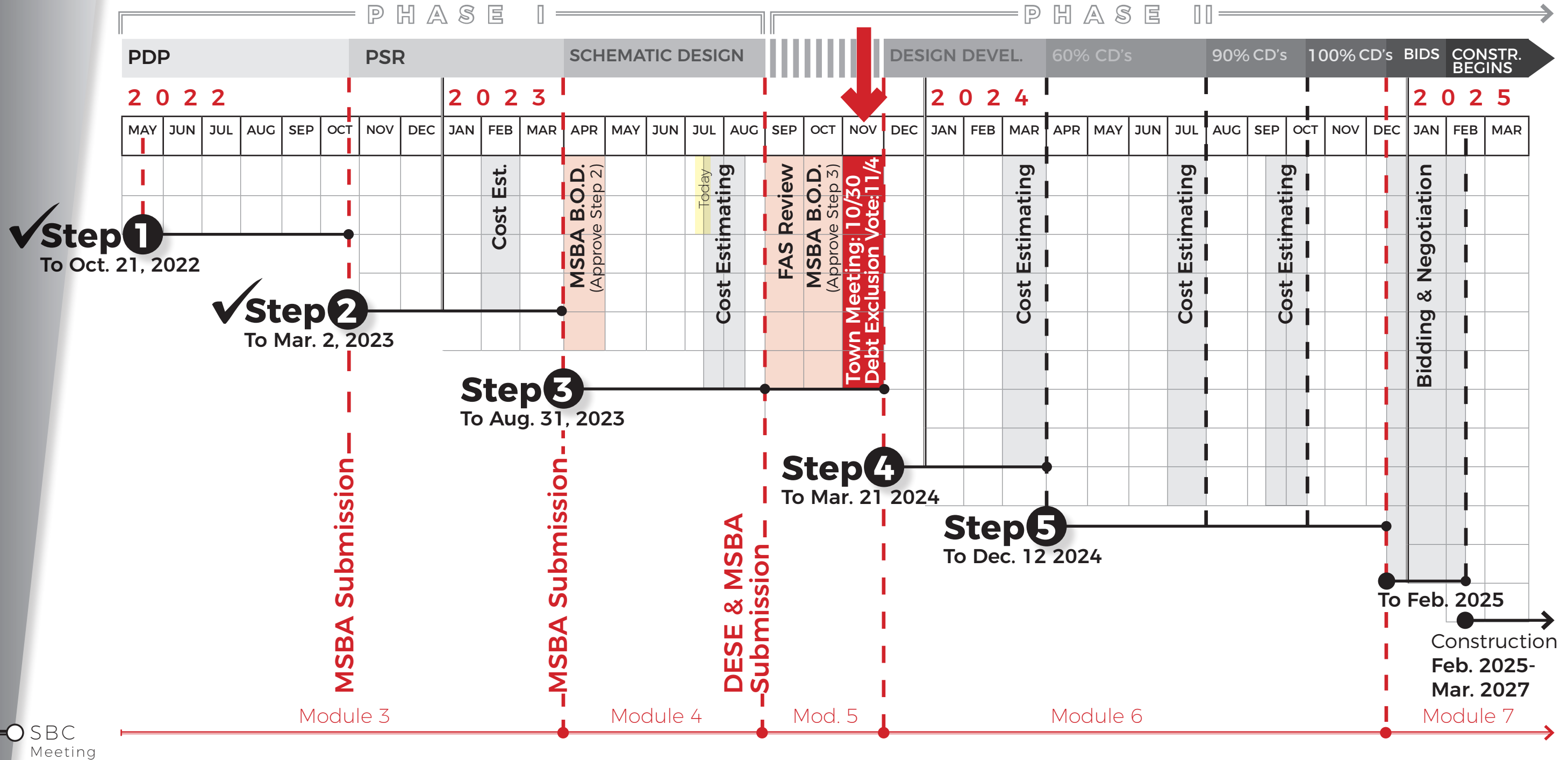
- // **VOTE** to Approve Mass Save ESA
- // Schematic Design (SD) Activities & Milestones
 - / SD Cost Estimating Submission
 - / **VOTE** to Approve Proprietary Specifications
- // Design Update
 - / Exterior Design Development
 - / Interior Design Development
- // Upcoming Events

www.wmsproject.org

Whitman Middle School
Project Website

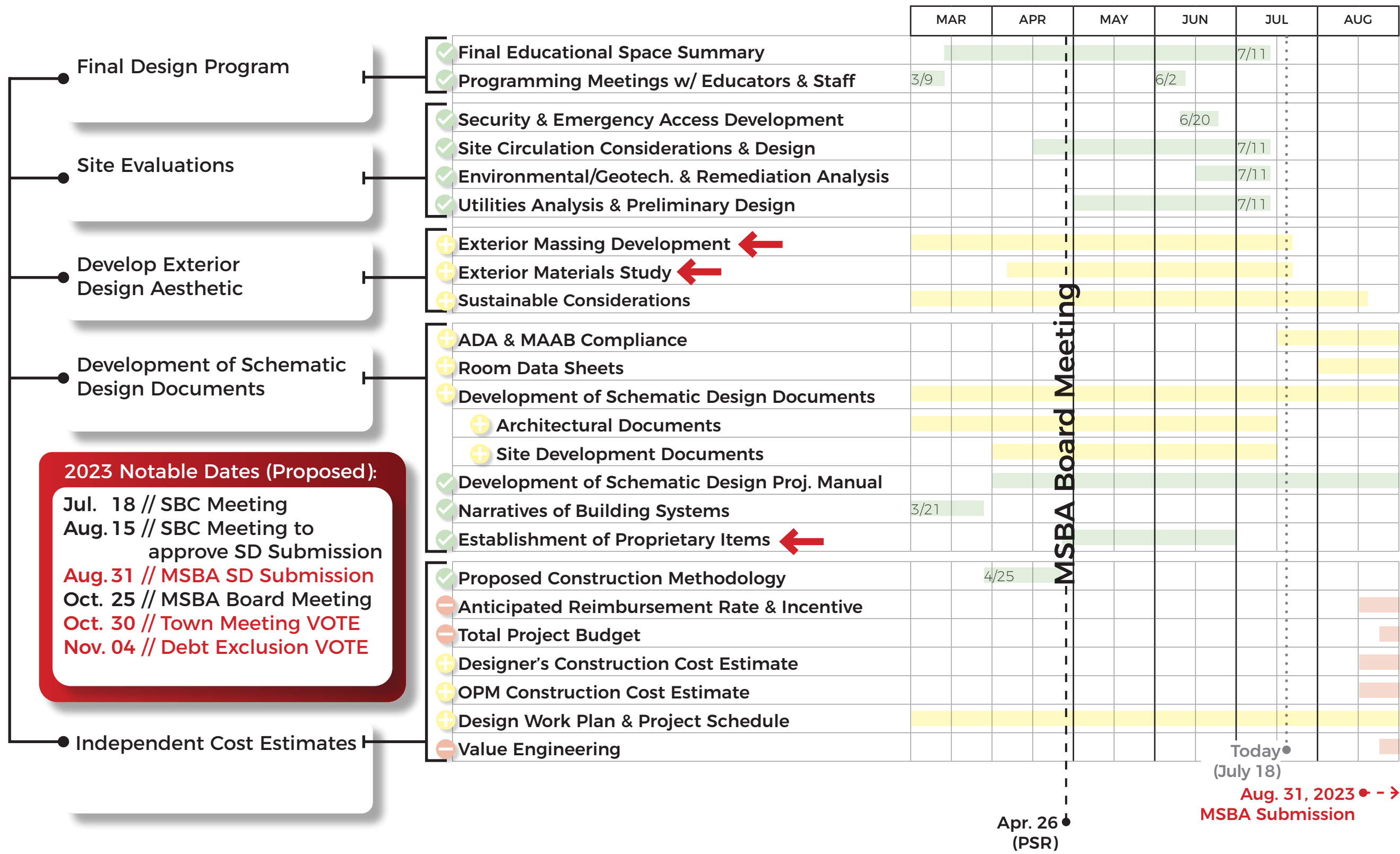


WMS Project Schedule Overview



Step 3 Schematic Design (SD) Submission

Apr. - Oct. 2023



2023 Notable Dates (Proposed):
 Jul. 18 // SBC Meeting
 Aug. 15 // SBC Meeting to approve SD Submission
 Aug. 31 // MSBA SD Submission
 Oct. 25 // MSBA Board Meeting
 Oct. 30 // Town Meeting VOTE
 Nov. 04 // Debt Exclusion VOTE

Completed
 Initiated
 Pending

Apr. 26 (PSR)

Today (July 18)
 Aug. 31, 2023 MSBA Submission

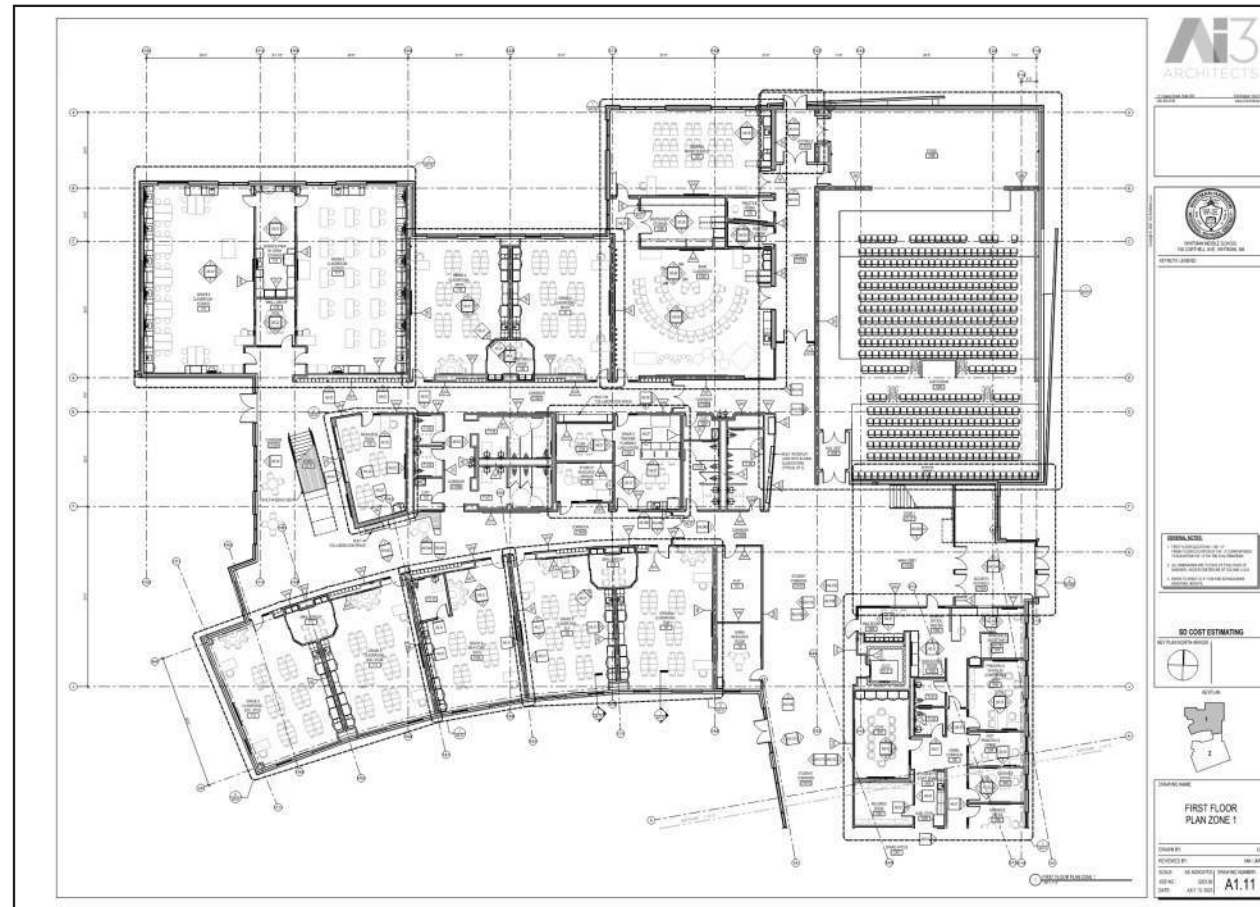
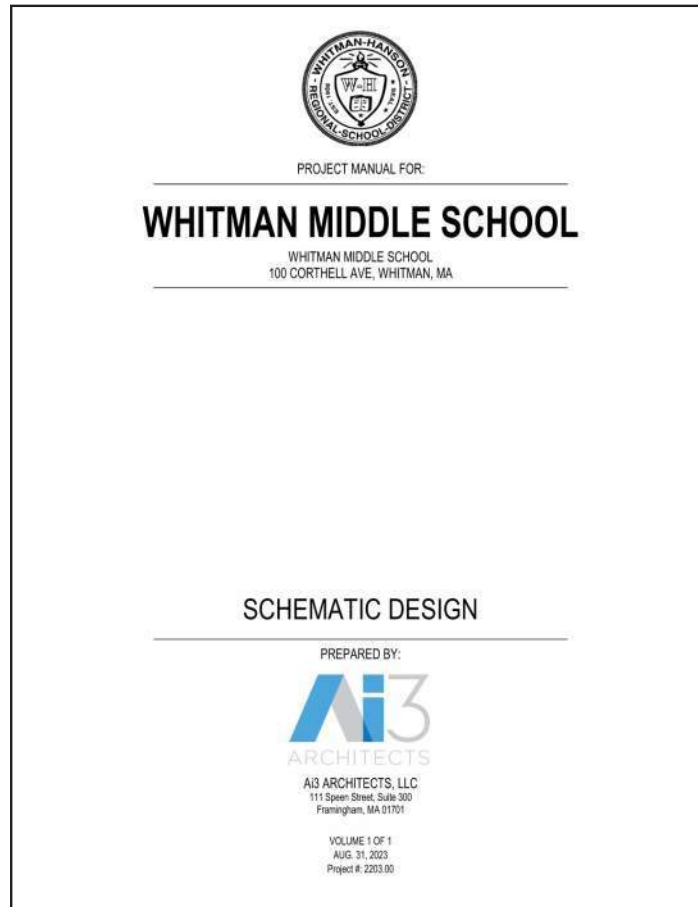
SD Cost Estimating Submission

Available for SBC Review, including:

Project Manual
(Outline Specifications)

Civil, Landscape, &
Architectural Drawings

Building Systems
Narratives



- // Structural Systems
- // Mechanical Systems
- // Electrical Systems
- // Plumbing Systems
- // Fire Protection Systems
- // Technology Systems
- // Food Service
- // Theater

Cost Estimating Schedule

- Jul. 13 - Submitted Docs
- Aug. 03 - Cost Estimates Due
- Aug. 08 - Estimate Reconciliation
- Aug. 15 - SBC Presentation for approval of SD

VOTE to approve Proprietary Specifications

WHAT ARE PROPRIETARY SPECIFICATIONS?

- // Descriptions of materials that cite a **specific brand name** such that only one vendor or manufacturer can supply the desired items
- // Per M.G.L. c.30, §39M(b), a governmental body must document the reasons [for proprietary items] and provide them in writing

WHRSD PROPOSED ITEMS FOR APPROVAL:

- 1. Protege GX - Access Control**
 - District's new system that handles our door access and ID card system
 - Integrated at all schools, facilities, and IT Dept's
- 2. Avaya IP Office 11 - Phone System**
(NOTE: This would be within the District's Technology scope, not the overall project)
 - Recently implemented this system at all schools
 - Connects all district schools
 - The "brains" of this system reside in the IT department at the HS

These two items are what the District knows to be truly proprietary in nature.

VOTE

That the proprietary list of items for the Whitman Middle School Building Project be accepted and approved as presented.

Design Update









- Outline of Existing
- Emergency Access
- Parent Drop-off
- Bus Drop-off
- Bus Drop-off
- Main Entry
- Possible solar canopy location



Site Rendering

Existing Parking
Spaces = 159

Proposed Parking
Spaces = 180



Natural walking path

Renovated Field

Existing Fields

Whitman Middle School

Outdoor classroom and courtyard

Area of rainwater retention

Existing Field

New Field

Relocated concessions stand

New Field

Outdoor classroom w/ shade structure

Extents of visible stream

Site Rendering

A New Whitman Middle School Campus



Exterior Design Development

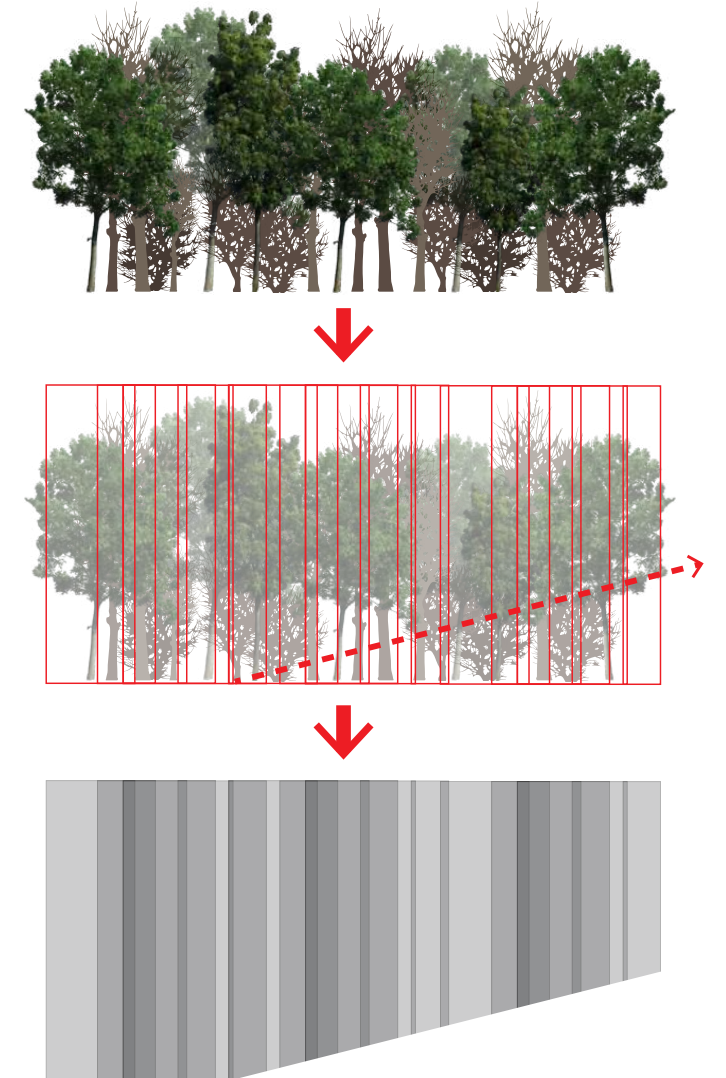
Acknowledging the Site Context



Backdrop of
Proposed Building

Aspects of the tree line:
filtered light,
perceived depth,
vertical in nature,
covering overhead

Lends itself to a system of
vertically-oriented elements
and panels that create
shading & visual interest



Exterior Design Development

Material Considerations

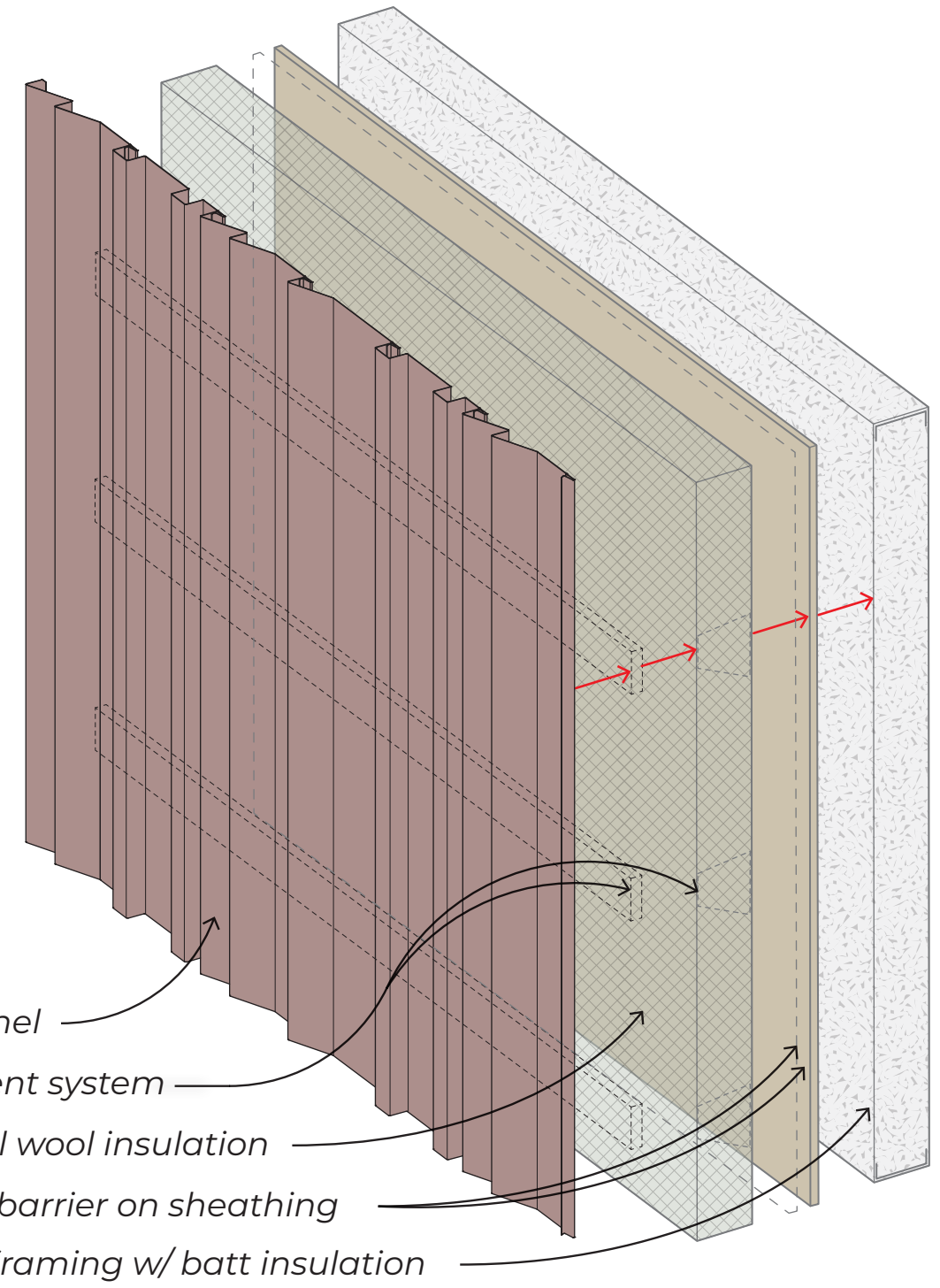
METAL PANEL

- // Design: Vertically oriented & textural to create shadow + visual interest
- // Durability: Used on walls & roofs, resistant to insects, low maintenance
- // Efficiency: Reflects heat to lower thermal loads, lightweight structure
- // Recyclability: Allows for easy removal & replacement



NATURAL STONE VENEER

- // Design: Warm and natural
- // Durability: Low maintenance - Resistant to harsh weather, moisture, staining, chipping, and fading
- // Efficiency: Lightweight for faster installation
- // Recyclability: Actual stone



Rainscreen System

Exterior Rendering

Front Approach from Northeast Corner



Exterior Rendering

Front Approach from Northeast Corner



Exterior Rendering

Front Approach from Southeast Corner





Exterior Rendering
Front Approach from Southeast Corner

Exterior Rendering

View into Courtyard from West



Exterior Rendering Within the Outdoor Courtyard



Exterior Design Development

Connecting Students & Staff to Nature

"As many exterior windows as possible!"

What we heard during Programming Meetings

"Natural palette with wood tones - not over stimulating"

"Textural elements that the students can touch"

The human brain seeks a visually balanced experience. Color harmony is the combining of colors in order to produce a pleasing effect.

Interior Design Development

Connecting Students & Staff to Nature

"As many exterior windows as possible!"

What we heard during Programming Meetings

"Natural palette with wood tones - not over stimulating"

"Textural elements that the students can touch"

Humans find nature inherently interesting. Time in nature increases our ability to pay attention, and refreshes our minds for new tasks.

Interior Rendering

Commons Opposite the Outdoor Courtyard



Interior Rendering

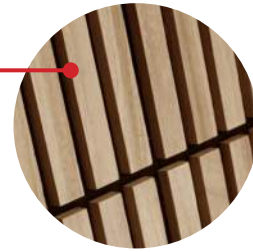
Academic Commons Opposite the Wetlands



Interior Materials for Consideration

WOOD SLAT CEILINGS & ACCENTS

// Design: As an accent to ACT ceilings, adds necessary acoustical treatment



SOLID WOOD DOORS & NOOKS



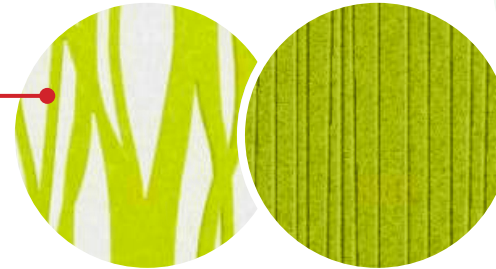
RIGID SHEET VINYL CLADDING

// Design: Allows for natural material look without the cost of wood; Can also be a write-able surface

// Maintenance: Easily wipes clean and high scratch resistance

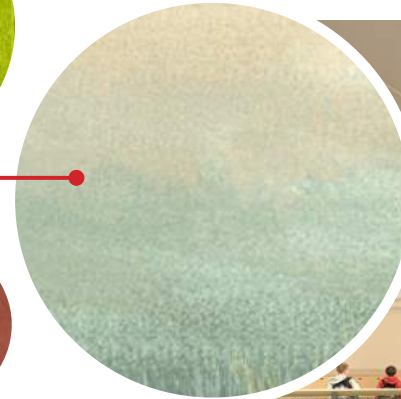
ACOUSTIC FELT PANELS

// Design: As an accent to walls, adds necessary acoustical treatment



VINYL WALL GRAPHICS

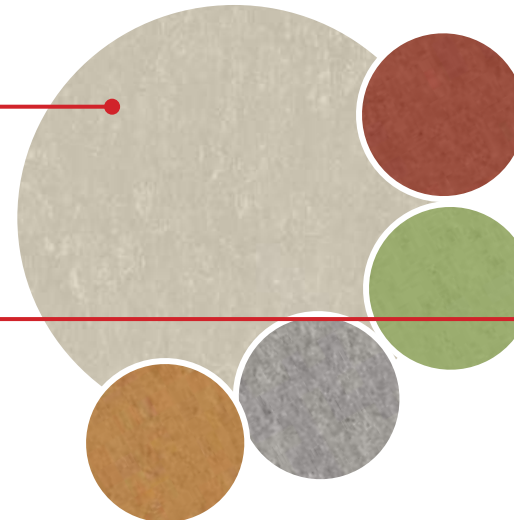
// Design: As an accent to walls



RESILIENT SHEET FLOORING

// Design: Allows for sweeping designs

// Maintenance: No stripping/waxing



CARPET TILE FLOORING

// Design: In Media Center & Offices

// Maintenance: Easy to replace tiles



Upcoming Events

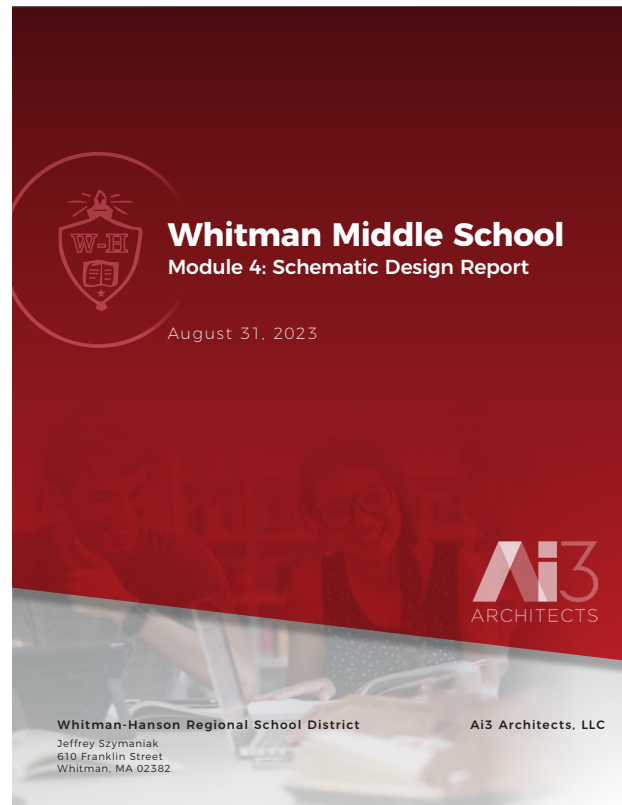
Dates & Content

SD Submission

THURSDAY

AUG 31, 2023

Due to MSBA



Submission of
the Schematic
Design (SD)
Documents,
Project Manual,
& Report

Town Meeting VOTE

MONDAY

OCT 30, 2023

Debt Exclusion VOTE

SATURDAY

NOV 4, 2023



Questions?

Thank you

www.wmsproject.org

**Whitman Middle School
Project Website**

