



## Experts in Post Frame Building

**260.205.6218**



*Licensed and Insured in Indiana and Ohio*

## Post Frame Building

### **Metal Roofing and Siding**

Our main supplier, Qualiform Metals, is helping to lead the industry by working to be the first metal supplier offering a 50 year Color Warranty.

Roof and siding metal is 29 gauge steel and backed by a 40 year limited color fade promise.

### **Laminated Posts and Perma Columns**

Older pole barns were built with solid block posts which tend to twist over time. All of our posts are multi-ply 2x6 or 2x8 which are finger-jointed, glued, and screwed together. These make for an incredibly strong support ensuring a straight post for the life of the building. The bottom portion is pressure treated for ground contact and each post is set a minimum depth of 48" in the ground.

For customers looking to keep all lumber from the ground, we suggest perma-columns which connect wood posts to concrete posts.



*Call or Email us today to get a quote*



## Concrete and Excavation

### **Excavation**

Ground work is where every project begins. We work with local excavators who will come and prep your building site by clearing off all top soil and laying a foundation 4 to 6 inches thick of stone and gravel. If this is something you can do yourself or hire locally, no problem.

### **Concrete Pads and Foundations**

If your finished product requires a concrete floor, our guys will help you get what you need for whatever the purpose. Post frame buildings have a "floating" slab a minimum of 4" thick. We pour the concrete after the building is erected.

Stick built buildings require a 3' deep footer around the perimeter tied into the concrete floor, then the building is framed on top of the slab. We can help you decide which is best for you.

*P: 260.205.6218 W: justpolebarns.com*

## Insulation

### Spray Foam, Batt and Blown-In Cellulose

When you're ready to button up your building we can help you decide the most cost effective and quality product to meet your needs. Batt insulation is easy to install, offers a good R-Value, and is easier on a budget.

For professional shops and work spaces, nothing beats 2" of spray foam for air tightness inside a building. Once ceiling liner panel is installed, we suggest at least 10" of blown-in cellulose for a R-35 insulating value.



## PEX Radiant Floor Heat

If you're looking to heat your shop there's no better system than in-floor radiant heat. We can work with you or your HVAC professional to install pex lines and foam board.



## Interior Framing

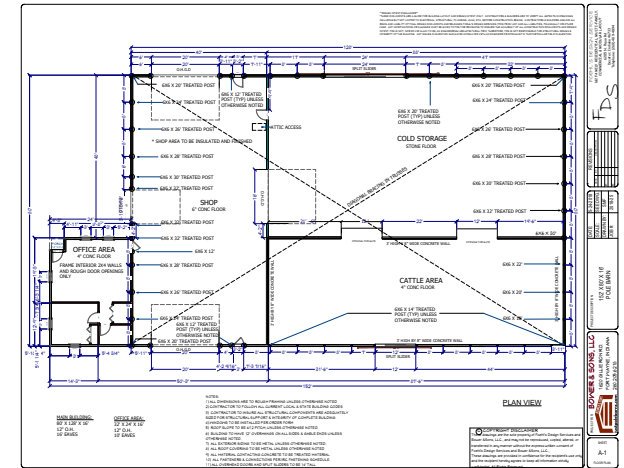
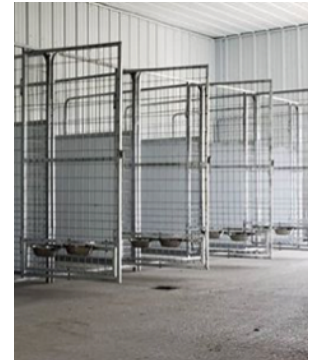
Our standard engineered design utilizes a spacing of every 4 feet for roof trusses. We work with Trusco Truss company and they build all their trusses with top-tier lumber. Lumber grades are subtle, but they can affect the straightness and integrity of lumber as a building ages.

Finished spaces require a 2 foot spacing for truss work to carry the weight of drywall.

Interior walls, stairs, attics, lofts, and framing for bedrooms, office's, bathrooms, etc are something we can help you with.

## Kennel Runs and Stalls

Looking for a safe place for your animals? We can install specialized kennels and other housing options for livestock, horses, dogs, and more.



## Blue Prints and Engineering

Larger projects, commercial work, and barn houses usually require a set of prints and an approval by a local architect or engineer. Some counties will require these as well, even for smaller projects.

We can typically get you a close estimate for your project before drafting up blueprints. Once you decide to work with us we will let you know any additional expenses for this process. Most architects charge \$500 to \$1500 for a full set.

If you already have a set of prints, we are happy to use your design or help make modifications.