

OPTIONAL OVERHANG
 DRAWING NOT TO SCALE

PLEASE NOTE THAT DETAIL MAY VARY PER ACTUAL ORDER DEPENDING ON OPTIONS CHOSEN AND LOCAL CODE REQUIREMENTS

TYPICAL WALL DETAIL
 DRAWING NOT TO SCALE

NOTES:

- 1) BUILDERS USE APPROVED MECHANICAL FASTENERS AS REQUIRED BY LOCAL CODE HAVING JURISDICTION.
- 2) STANDARD SPACING LAMINATE POST ARE 8'-0" O.C ON EAVE SIDES OF BUILDING & 10'-0" ON GABLE ENDS OF BUILDING.
- 3) THIS INFORMATION IS FOR STANDARD BUILDINGS WITH A MAX. OF A 16'-0" EAVE HEIGHT AND UP TO 80'-0" WIDE. BUILDINGS OVER 16'-0" HIGH, OR OVER 80'-0" WIDE; OR OTHER CUSTOM FEATURES REQUESTED BY BUYER MAY RESULT IN ADDITIONAL COSTS (BUT NOT LIMITED TO) SUCH AS ENGINEERING AND DESIGN WORK.

© COPYRIGHT DISCLAIMER
 These drawings are the sole property of Bower & Sons, LLC, and may not be reproduced, copied, altered, or transferred in any manner without the express written consent of Bower & Sons, LLC. These drawings are provided in confidence for the recipient's use only, and the recipient hereby agrees to keep all information strictly confidential. All Rights Reserved.

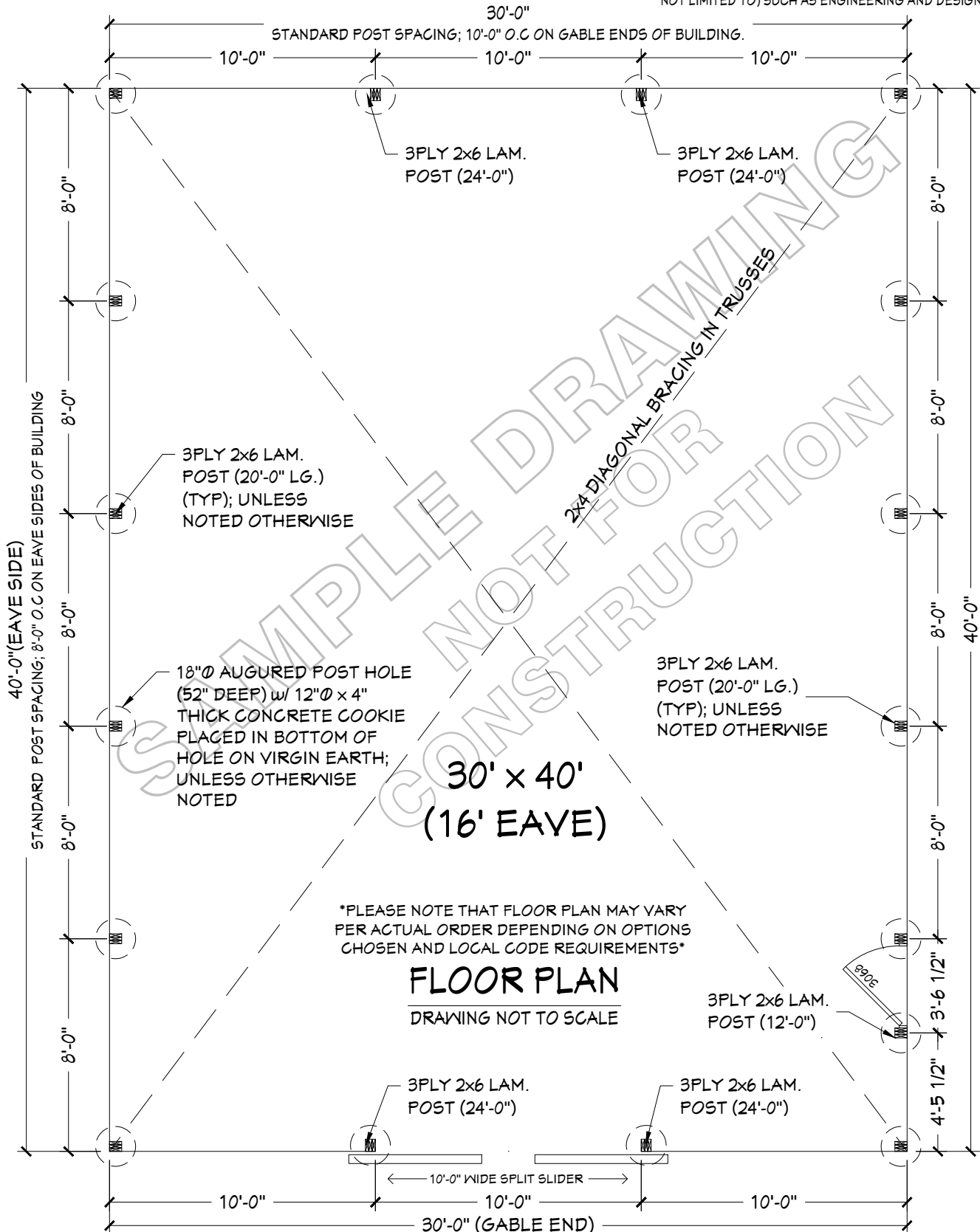
****DESIGN INTENT DISCLAIMER****
 *These documents are a guide for building layout and design intent only. Contractors & builders are to verify all aspects in drawings including but not limited to electrical, structural, plumbing, HVAC, etc. before construction begins. Contractors & builders assume all risks and liability of final design documents and releases Foehi's Design Services (FDS) from any and all liabilities, financially or otherwise. Any modifications or changes must be given to FDS for revisions to ensure the accuracy of all construction documents and design intent. FDS is not; nor do we claim to be, an engineering/ architectural firm; therefore, FDS is not responsible for structural design & integrity of the building. Any issues in question should be consulted with an engineer or specialist in the particular field in question.

SHEET DESCRIPTION: STANDARD POLE BARN WALL SECTION	DATE:	5-21-19	SHEET WD-1 STANDARD WALL DETAIL
	SCALE:	NONE	
	DRAWN BY:	FDS	
	JOB #:		

NOTES:

1) BUILDERS TO USE APPROVED MECHANICAL FASTENERS AS REQUIRED BY LOCAL CODE HAVING JURISDICTION.

2) THIS INFORMATION IS FOR STANDARD BUILDINGS WITH A MAX. OF A 16'-0" EAVE HEIGHT AND UP TO 80'-0" WIDE. BUILDINGS OVER 16'-0" HIGH, OR OVER 80'-0" WIDE; OR OTHER CUSTOM FEATURES REQUESTED BY BUYER MAY RESULT IN ADDITIONAL COSTS (BUT NOT LIMITED TO) SUCH AS ENGINEERING AND DESIGN WORK.



© COPYRIGHT DISCLAIMER
 These drawings are the sole property of Bower & Sons, LLC, and may not be reproduced, copied, altered, or transferred in any manner without the express written consent of Bower & Sons, LLC. These drawings are provided in confidence for the recipient's use only, and the recipient hereby agrees to keep all information strictly confidential. All Rights Reserved.

DESIGN INTENT DISCLAIMER
 These documents are a guide for building layout and design intent only. Contractors & builders are to verify all aspects in drawings including but not limited to electrical, structural, plumbing, HVAC, etc. before construction begins. Contractors & builders assume all risks and liability of final design documents and releases Foehi's Design Services (FDS) from any and all liabilities, financially or otherwise. Any modifications or changes must be given to FDS for revisions to ensure the accuracy of all construction documents and design intent. FDS is not, nor do we claim to be, an engineering/ architectural firm; therefore, FDS is not responsible for structural design and integrity of the building. Any issues in question should be consulted with an engineer or specialist in the particular field in question.

SHEET DESCRIPTION:
**SAMPLE POLE BARN
 FLOOR PLAN**

DATE:	5-21-19
SCALE:	NONE
DRAWN BY:	FDS
JOB #:	

SHEET
SP-1
 SAMPLE FLOOR PLAN