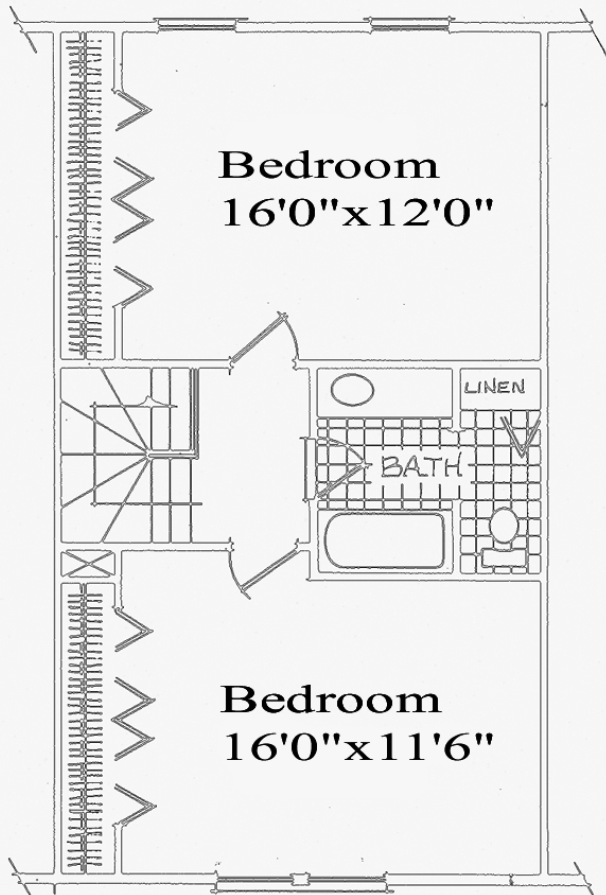


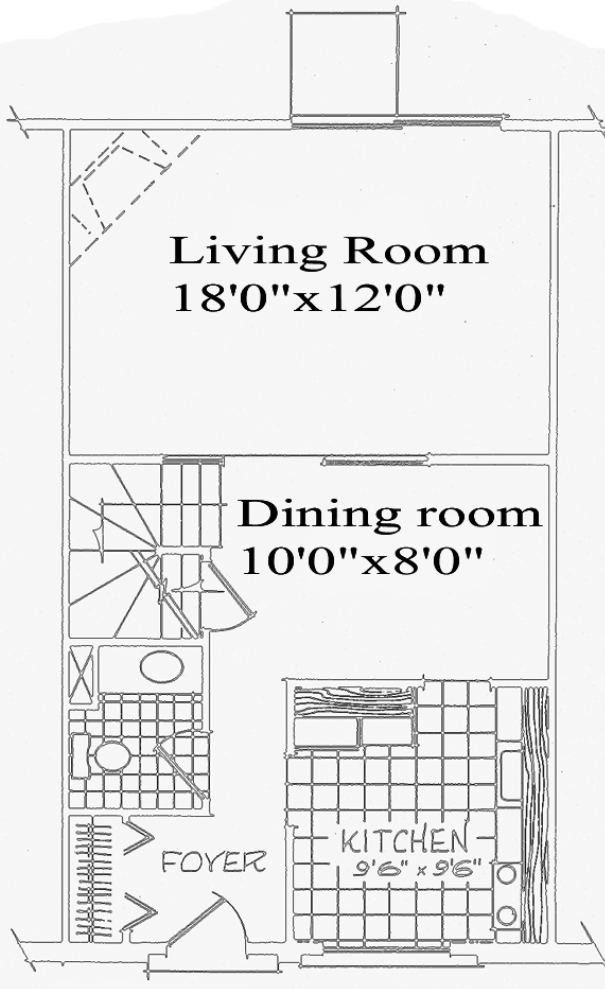
2 bedroom 1½ bath

Space is the keynote! Every room of this handsome home is generous in size.

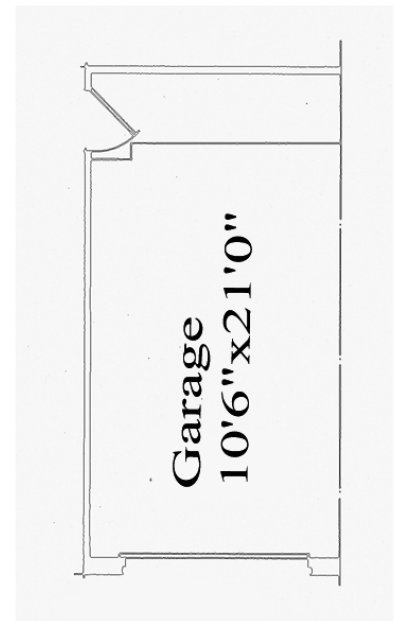
Enter a large foyer with guest closet. A powder room with its graceful vanity is conveniently placed. The kitchen is bright and cheerful with a large window providing natural light. It has color coordinated refrigerator-freezer, oven and range with hood and a great abundance of handsome wood cabinets. Space for family dining, too. A separate dining room overlooks the sunken living room, which stretches the whole width of the home. A handsome corner fireplace is optional. It can be a cozy gathering place all winter long. A sliding insulated glass door-wall opens to your patio area. Upstairs, you'll find two huge living room sized bedrooms, each with wall wide closets. A ceramic tile bath serves both. The Canterbury II has lovely shag carpeting throughout the major living areas. A full basement has a laundry tub and plenty of space for future living area or recreation room. You'll find air conditioned comfort, individually controlled and insulated windows for more weather control. You'll love the spacious Canterbury II with its dramatic touches. A garage is a desirable option.



Second Floor



First Floor



Optional garage

# Canterbury II

