

3 Bedroom 1½ Baths

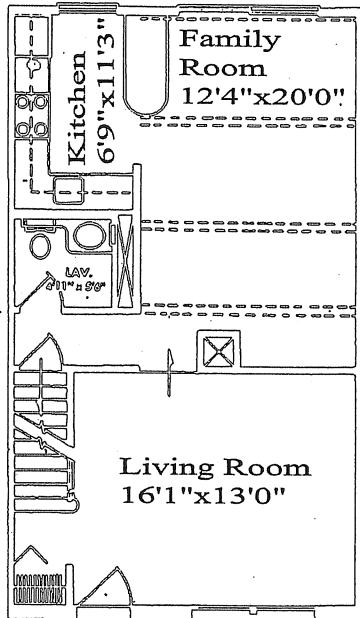
This all brick front Colonial is designed with the true Williamsburg heritage. The large living room is served by a front entry guest closet, and features unbroken wall space for exciting furniture arrangements. There are many luxury touches . . . individual centrally controlled air conditioning, insulated windows with screens and insulated doorwall leading to a private rear yard area. There is quality carpeting in all major living areas and charming architectural details throughout.

You step into a sunken family room large enough for many family activities. Antiqued beams stretch across the ceiling for an interesting decorative touch. A breakfast bar divides the dining area from the kitchen. The kitchen has exceptional counter space; in an L-shaped plan and lovely wood decorator cabinets for storage. Color coordinated appliances include a refrigerator-freezer and oven-range with hood. A waste disposal and stainless steel sink are also yours.

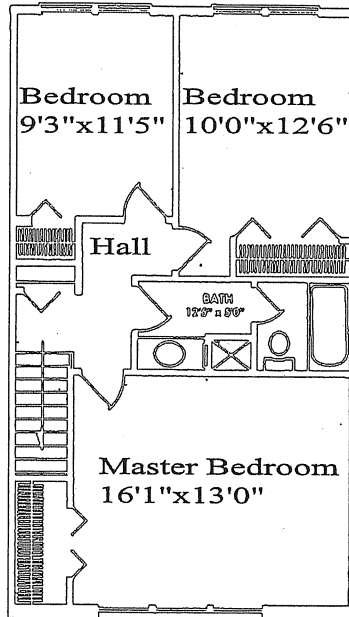
A first floor powder room with vanity and large illuminated mirror is conveniently placed for guest and family use.

On the second floor are three large bedrooms. The master bedroom is living room size and has a great oversized closet. The bath has an unusual compartment divider, so that the tub area may be closed off from the vanity sink area giving dual use. Ceramic floor and tub area and illuminated wall-wide mirror are glamour touches.

A full basement for storage and laundry has plenty of room to plan a fun room in the future. The Edinburgh is spacious and beautifully fills the needs of the large family.



First Floor



Second Floor

Edinburgh

