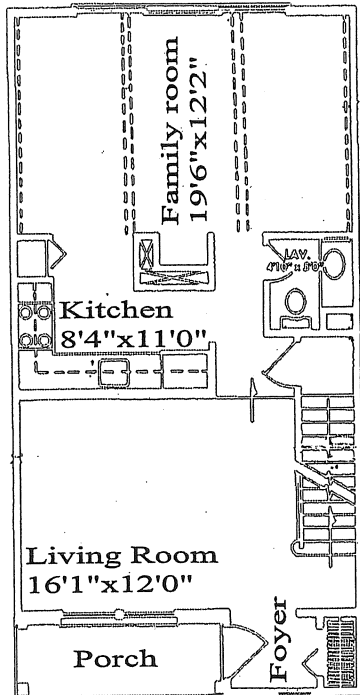


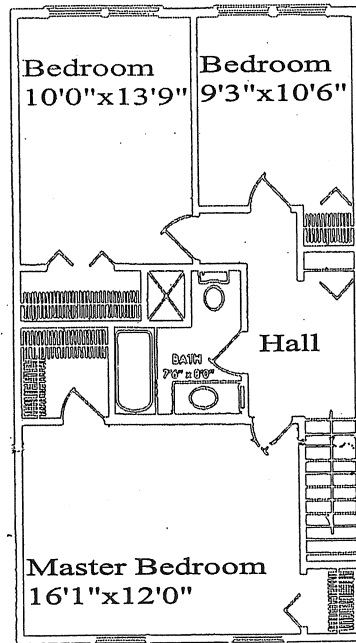
3 Bedroom 1½ Baths

A covered front porch is an unusual and delightful architectural feature of The Falstaff. Step into a separate foyer with a large guest closet. Then, into your large front living room with wonderful wall space for furniture arrangements. Step down to view a tremendous expanse of living; containing family room, kitchen and powder room. The huge family room will have multiple use with plenty of space for dining. A large 10 foot insulated door wall makes this room bright and cheery and extends living to the outdoors where you can plan your own patio or garden. The enclosed rear yard area is yours to plan imaginatively! Warm antique beams stretch across the dining-fun room. The L-shaped kitchen has extravagant counter and cupboard space and boasts a separate pantry. Warm wood cabinets in lovely design, refrigerator-freezer and oven and range, color coordinated, waste disposal and stainless steel sink are all part of the convenient plan. A luminous ceiling provides soft constant light.

A first floor powder room with vanity is an added touch of luxury. Lovely carpeting is provided in all major living areas. Your comfort is controlled by you — with central air conditioning and heat, and insulated windows throughout. Up a lovely staircase to three bedrooms and large bath with vanity and easy to care for ceramic floor and tub area. The master bedroom has a tremendous walk-in closet *plus* an additional closet for so many uses. In the hall you'll find a linen closet for more storage space. A full basement with laundry tray offers you additional storage and there's plenty of space to add-a-room if needed. You'll live in pride and comfort in the lovely Falstaff.



First Floor



Second Floor

Falstaff

