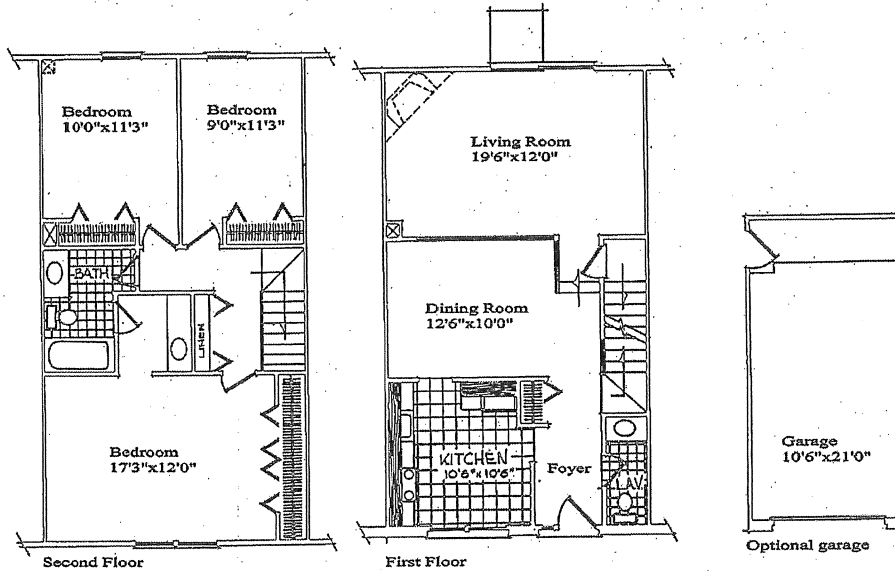


### 3 Bedroom 1½ bath

Drama in the dining room! Your balconied dining room with wood railing overlooks the sunken living room. What lovely dinner parties you can have in this setting. The living room stretches the whole width of the home. A tremendous expanse of space for multiple family activities. Add a corner fireplace as an option and you'll gather here all winter long. A large insulated sliding glass door-wall opens to your private patio area. The kitchen is a dream work area. Color coordinated refrigerator-freezer, oven and range with hood and lots of decorator wood cabinets for storage make meal planning an easy chore. There's family breakfast space, too. A first floor powder room has a vanity with mirror. On the second floor, three bedrooms and a compartmented bath, with entry from the hallway or master bedroom. An additional vanity with basin adds a touch of luxury. A large linen closet is convenient in the hall. The Highland III includes shag carpeting in all major living areas. Individually controlled air conditioning and heat are added comforts. Insulated windows provide more climate control. The full basement has a laundry tub and lots of space you'll want to convert into a recreation room or workshop. You can have a garage as an option. You'll find the Highland III a perfect choice.



## Highland III

