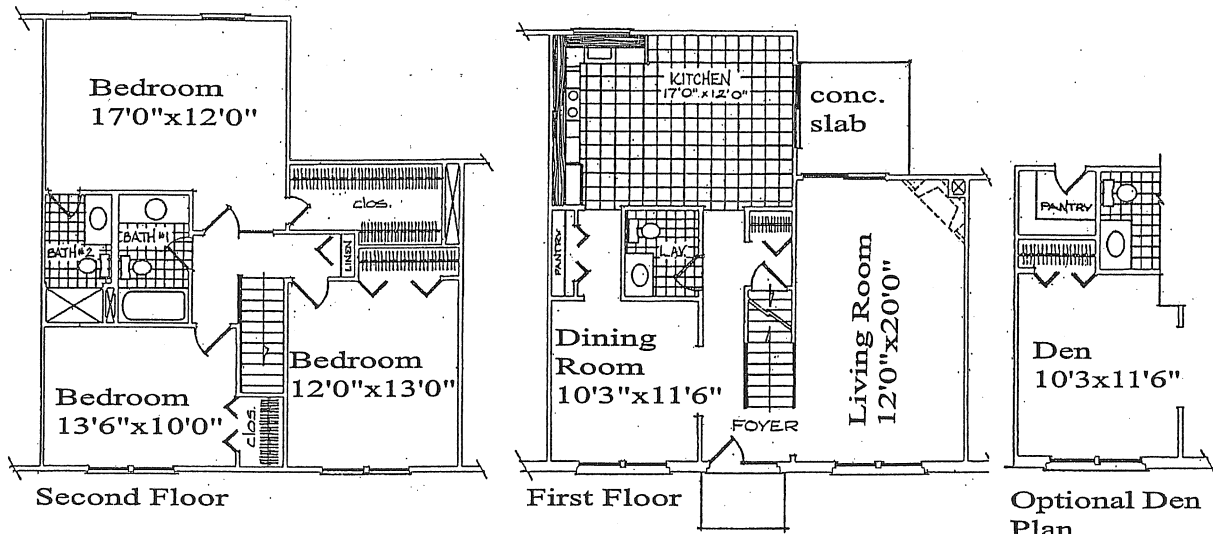
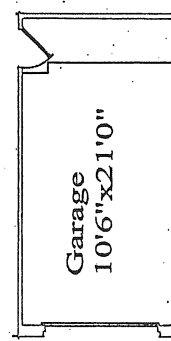


### 3 Bedroom 2½ bath

There's a lot of living for the large family in the Loch Lomond III. A separate living room has marvelous uninterrupted wall space for imaginative furniture placement. A door-wall leading to the private patio area extends living outdoors. And a corner fireplace can be yours, if you wish. There's a versatile room that can be used as a dining room, or there's a plan with a den so you can have a choice. A first floor powder room with vanity and mirror is a convenient feature. The country kitchen has multiple use and also opens to your future patio for outdoor living. Counters have decorator wood cabinets above and below. Color coordinated refrigerator-freezer, oven and range with hood, and a stainless steel sink make kitchen chores a breeze! Upstairs, three large bedrooms. Two with tremendous walk-in wardrobe closets. The master bedroom has dramatic double door entry and its own private bath with stall shower. Another full bath with tub has ceramic tiled floor and tiled tub area. The Loch Lomond III has a full basement with laundry tub and plenty of extra space to plan a recreation room as your needs grow. Shag carpeting is included throughout living areas. Climate control is at a touch of your finger with individual controlled air conditioning and heat. Insulated windows are included. You may choose an optional garage which includes a covered front entry to your home. Isn't this a great house for your family?



## Loch Lomond III



Optional Garage