

1984 - 1987 HONDA GL1200™

PARTS LIST

Qty	Description
<input type="checkbox"/> 1	45-Degree clamp with two 1/2" bolts and nuts
<input type="checkbox"/> 1	70-Degree clamp with two 1/2" bolts and nuts
<input type="checkbox"/> 2	Small U-Clamps
<input type="checkbox"/> 1	Lower rear mounting bracket
<input type="checkbox"/> 1	M8 - 1.25 x 40 socket and lock washer
	M10 - 1.25 x 50 hex with lock washer and spacer
	1/2 x 1-1/2 Gr.#8 N.F. hex with lock washer and five flat washers
<input type="checkbox"/> 1	70-Degree boss with 5/8 rod end, two 5/8 flat washers and 5/8 nylock nut
<input type="checkbox"/> 1	45-Degree boss with 5/8 rod end, two 5/8 flat washers and 5/8 nylock nut
<input type="checkbox"/> 1	Straight strut with two clevis, two jam nuts, two 3/8" bolts and nuts, and 3/4" x 4" eye bolt and nylon lock nut
<input type="checkbox"/> 1	Bent strut with two clevis, two jam nuts, two 3/8" bolts and nuts, 3/4" x 4" eye bolt and nylon lock nut
<input type="checkbox"/> 1	2" Offset
<input type="checkbox"/> 1	Lower front mount and one u-clamp, two 5/16" x 18 nylock nuts, two flat washers and one 12mm nylock nut and washers 12mm rod 13" long
<input type="checkbox"/> 2	5/8" Rod ends and jam nuts, two bolts 5/8" x 18 x 2-1/2", four flat washers, two 5/8" x 18 nylock nuts
<input type="checkbox"/> 1	Shock with 5/8" x 20 x 2" and 5/8" x 20 x 2-1/4" bolts
<input type="checkbox"/> 1	Brake Line, banjo 10mm x 1.25, three crush washers and quick coupler
<input type="checkbox"/> 1	Optional: Damper, 1200 damper bolt 1-1/2" strut clamp
<input type="checkbox"/> 1	Mounting Instructions, Manual and Warranty card

California Sidecar, Inc.

15641 Computer Lane, Huntington Beach, CA 92649 • Tel. (714) 891-1033 • Service (714) 372-3816

UPPER FRONT

Remove lower right fairing. Spread U-clamp and attach to vertical bike frame as described in figure 1 of instructions. Position as high on frame as possible and at 90-degree angle. Notch lower fairing accordingly.

UPPER REAR

Spread U-clamp. Place I-clamp assembly around saddle bag rail with clamp pad, V block and I bolt on the top side of the saddle bag rail. Position on rail so that I bolt points forward and upward without interfering with the removal of the side cover and saddle bag. Finish installation. Tighten all bolts. To prevent clamp from moving drill 1/4" hole through clamp and rail, insert 1/4" bolt through assembled clamp, install nut and tighten.

IMPORTANT

If bike has floor boards it might be necessary to make a bracket to hold the front mount of floor board or remove. This is because we can not design all mounts around all accessories.

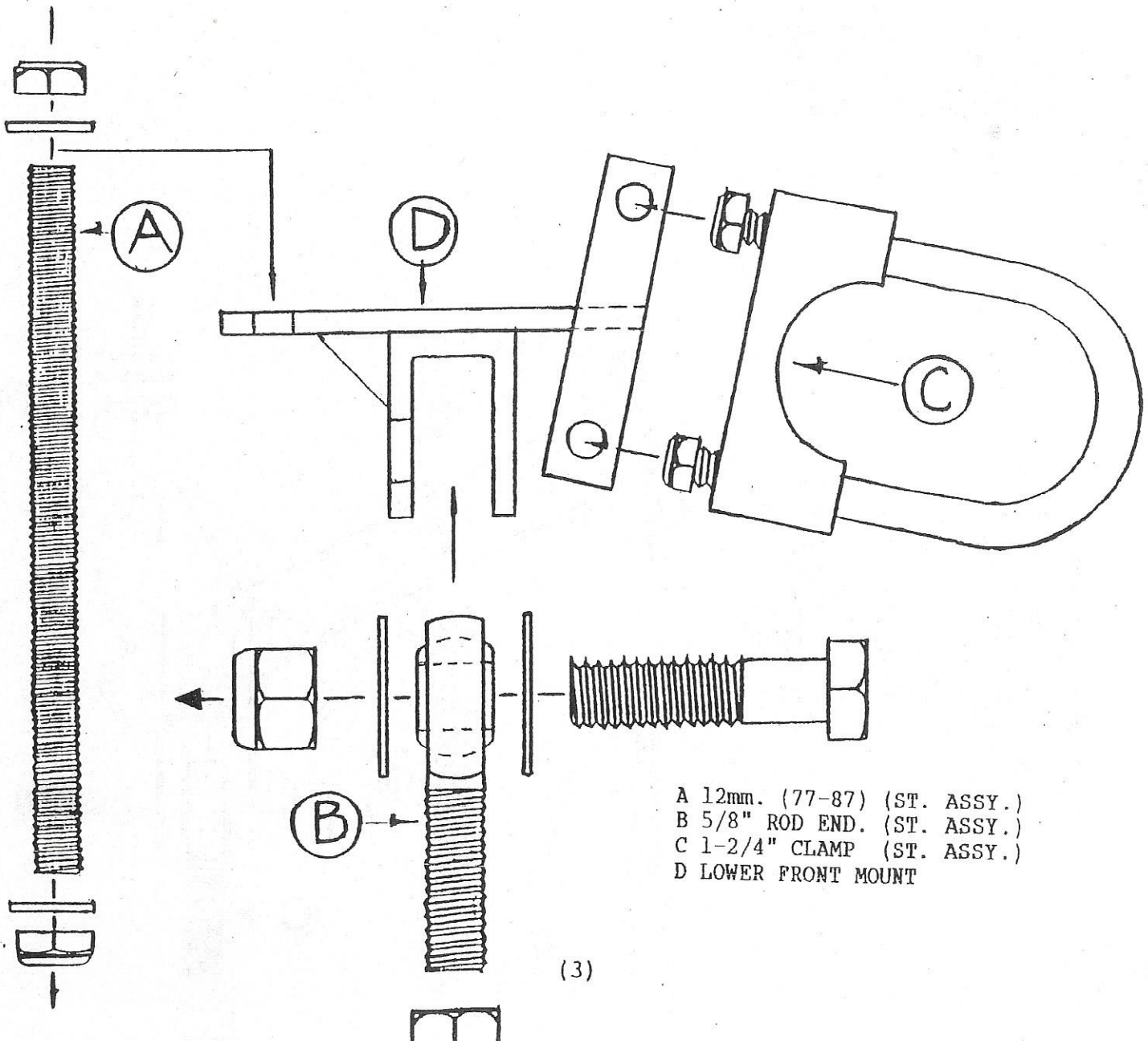
HONDA GOLD WING 1984 - 1987

SUPPLEMENT INSTRUCTIONS FOR UPDATED LOWER MOUNTS

LOWER FRONT

With bike on side stand, remove lower engine bolt and replace with new one. Nylock nut on left side should be flushed with end of threads. Position mount over new bolt on outside of engine guard. Affix washer and nut. Fit U-clamp assembly over frame and torque nuts to values below. Running boards etc., will go on after mount is located.

ENG. BOLT.....28 FT. LBS.
U-CLAMP.....11 FT. LBS.
5/8 ROD END....80 FT. LBS.



HONDA GOLD WING 1984 - 1987

SUPPLEMENT INSTRUCTIONS FOR UPDATED LOWER MOUNTS

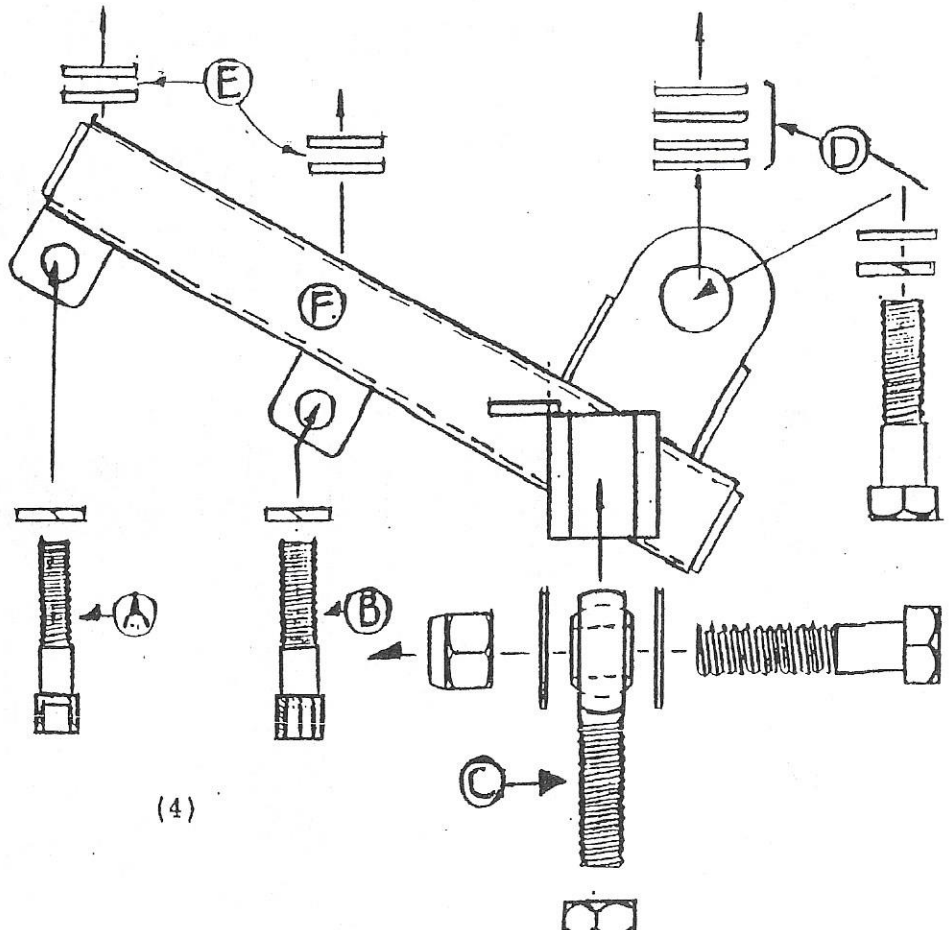
LOWER REAR

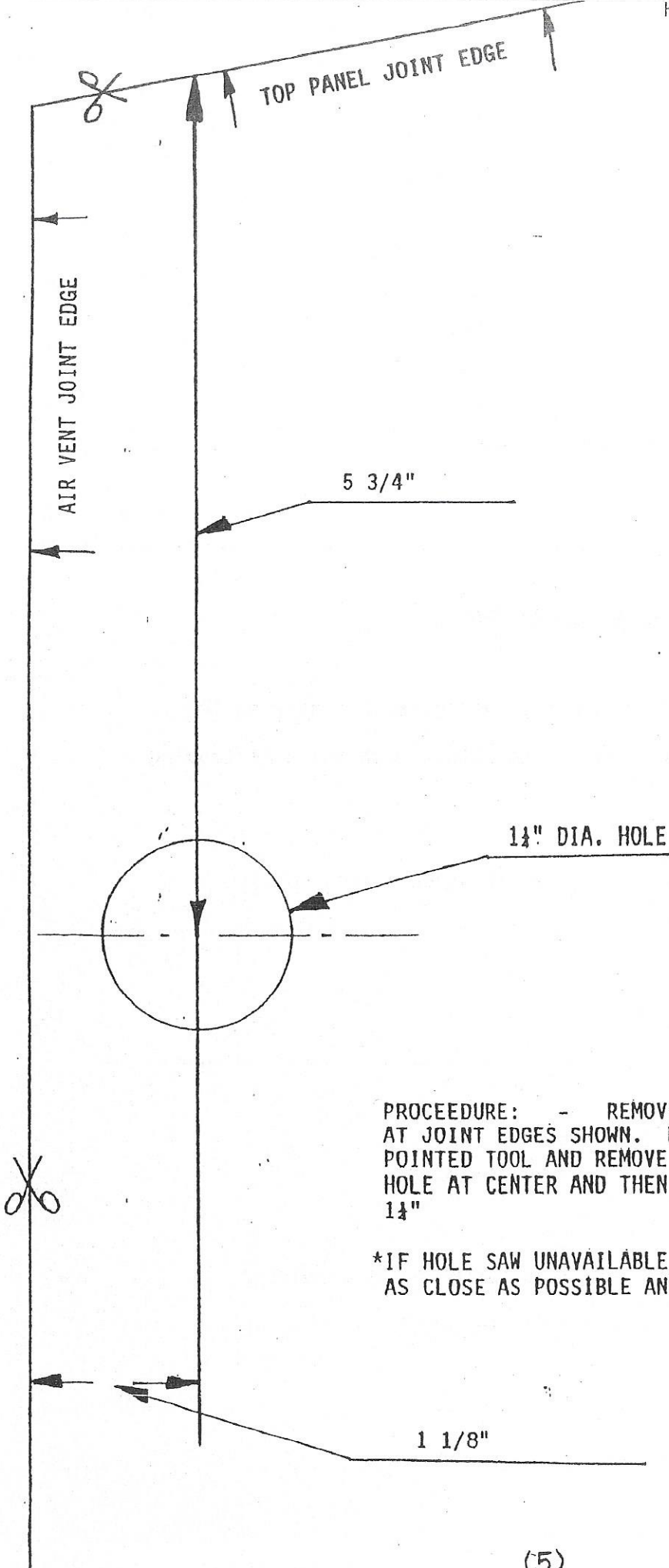
Remove R.H. passenger running board and chrome cap at swing arm pivot. Tap out swing arm nut to 1/2" NF x 3/4 deep (hole is correct size). Position mount temporarily with original 8 and 10mm bolts (do not tighten).

Push mount up against frame and establish number of 1/2 washers required between tab on mount and the threaded nut. (usually 3). Install 1/2 bolt and lockwasher through mount and spacer washers into threaded hole (do not tighten). Remove old 8 and 10mm bolts and install new ones supplied with lockwashers through running board and use (2) 10mm washers as spacers between the mount and the running board. Torque bolts to values below.

- 8mm BOLT.....13 FT. LBS.
- 10mm BOLT.....22 FT. LBS.
- 1/2 BOLT.....30 FT. LBS.
- 5/8 ROD END...80 FT. LBS.

- A 8MM 1.25 x 40 SOCKET HD.
CAP GR. 12.9 + L.W.
- B 10MM 1.25 x 40 SOCKET HD.
CAP GR. 12.9 + L.W.
- C 5/8" ROD END ST. ASSY.
- D 1/2" NF CAP x 1-1/2" GR.
8 + L.W. + 5 1/2" FLAT W.
- E 10MM x 2.5MM 4 FLAT W.
- F LOWER REAR MOUNT CUST.





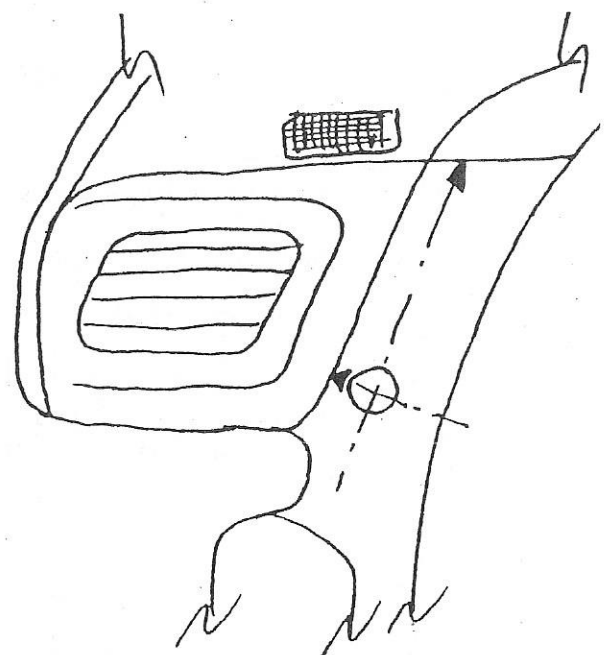
FRONT UPPER MOUNT
 "86/87 GOLD WING.

+ SCL

FRONT OF CYCLE →

RIGHT HAND PANEL
 ON FAIRING

THIS SIDE OUT



PROCEEDURE: - REMOVE PANEL AND PLACE THIS TEMPLATE AT JOINT EDGES SHOWN. MARK CENTER OF HOLE WITH SHARP POINTED TOOL AND REMOVE TEMPLATE. DRILL SMALL (ABOUT 1/8") HOLE AT CENTER AND THEN USE HOLE SAW TO DRILL OUT TO 1 1/4"

*IF HOLE SAW UNAVAILABLE DRILL 1/8" HOLES AROUND CIRCLE AS CLOSE AS POSSIBLE AND FILE CLEAN.

MOTORCYCLE WIRING

Ground	Brown & White
Running Lights	Blue & White
Turn Signal	Purple
Back Up Light	Green & White
Radio Cont. Live	Pink
Positive Electric Lean & Radio	Red

ELECTRIC LEAN SWITCHBOX

Mounts to the bottom of the motorcycles stock left hand switch housing. Drill small pilot holes and attach with the self tapping screw supplied.

NOTE: If needed you can drill holes in stock switch housing and rivet in place.

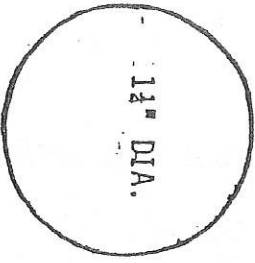
SIDECAR BRAKE

Attach the steel braided brake line to the front handlebar mounted master cylinder with the double banjo bolt supplied.

THIS EDGE UP AGAINST VENT RIBS

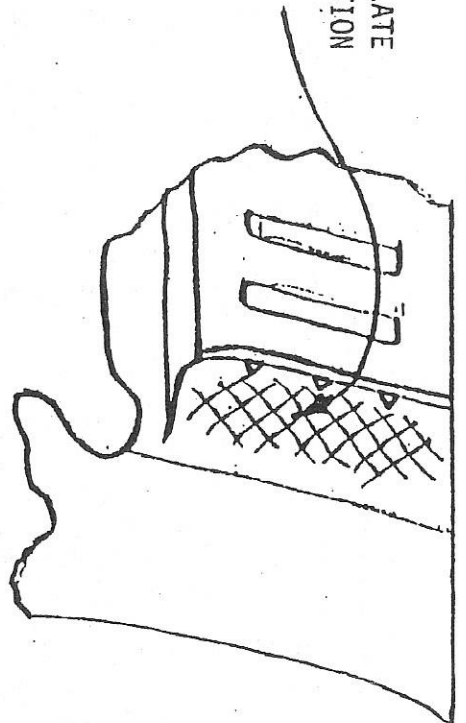
THIS EDGE TO TOP OF FAIRING JOINT

FRONT



*TYPICAL

TEMPLATE LOCATION

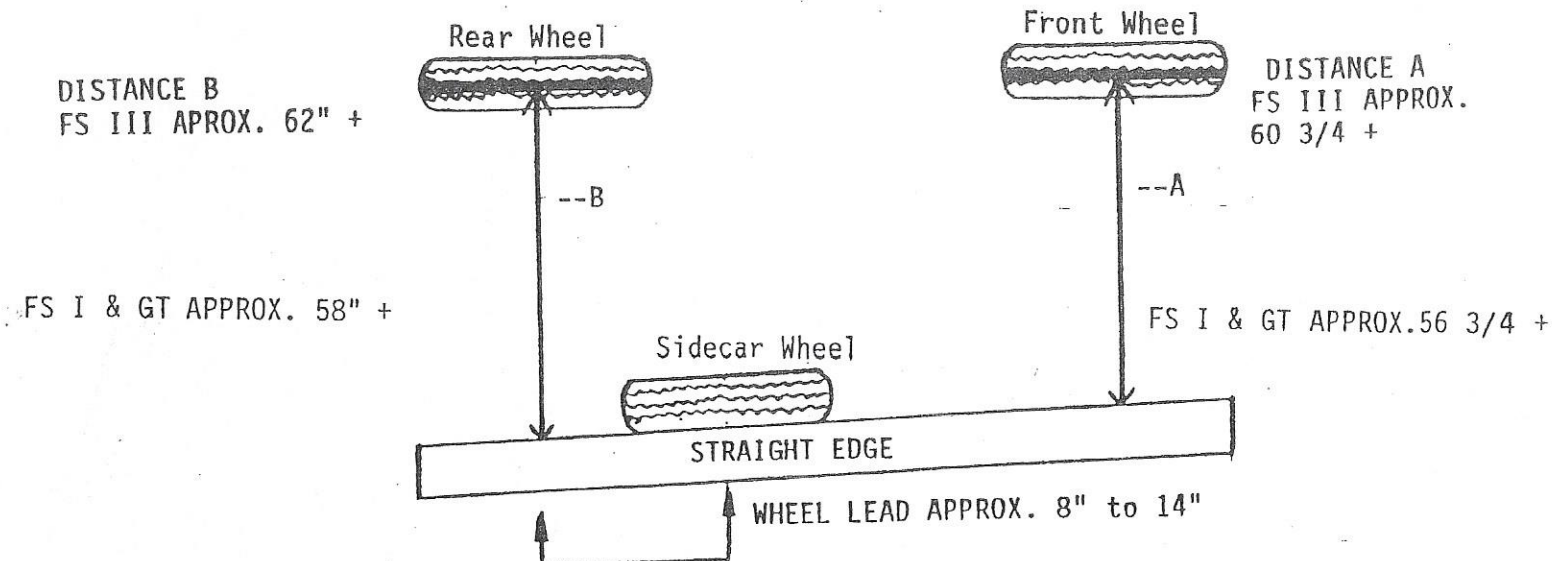


1984 & 85 GOLD WING

FAIRING HOLE FOR FRONT UPPER MOUNT

-PROCEDURE- REMOVE PANEL AND PLACE THIS TEMPLATE AT JOINT EDGES SHOWN. MARK CENTER OF HOLE WITH SHARP POINTED TOOL AND REMOVE TEMPLATE. DRILL SMALL (ABOUT 1/8") HOLE AT CENTER THEN USE HOLE SAW TO DRILL OUT TO 1 1/2".

*IF HOLE SAW IS UNAVAILABLE, DRILL MANY 1/8" HOLES AROUND INSIDE OF CIRCLE AS CLOSE AS POSSIBLE AND FILE CLEAN.



TOE IN:

DISTANCE A SHOULD BE APPROX. 1" TO 1 1/4" LESS THAN DISTANCE B. MEASURE FROM THE CENTER OF THE MOTORCYCLE RIM TO THE OUTSIDE OF THE SIDECAR WHEEL.

SIDECAR WHEEL LEAD:

THE DISTANCE THE SIDECAR AXEL LEADS THE REAR AXEL OF THE MOTORCYCLE SHOULD BE 8" TO 14".

NOTE: MOUNT AS FAR BACK AS THE BRACKETS WILL ALLOW.

LEAN OUT:

LOAD THE MOTORCYCLE AND SIDECAR WITH THE NORMAL AMOUNT OF WEIGHT TO BE CARRIED. LEAN THE BIKE OUT FROM THE SIDECAR APPROX. 1/8".

FRAME HEIGHT:

DISTANCE FROM BOTTOM OF FRAME TO GROUND.

FS I - II - III :

APPROX. 9" FRONT
APPROX. 10" REAR

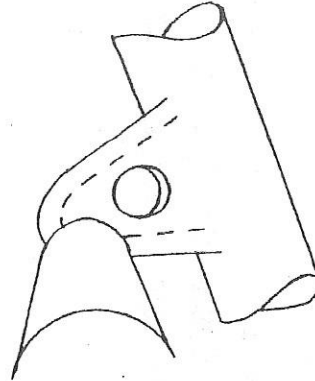
COMPANION GT:

APPROX. 9 1/2 " FRONT
APPROX. 10" REAR

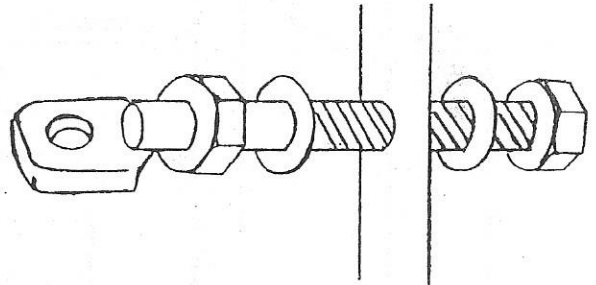
NOTE: WHEN SETTING FRAME HEIGHT WITH ELECTRIC LEAN ON FRIENDSHIP II & III HAVE AT LOWEST POSITION. ON FRIENDSHIP I AND COMPANION GT HAVE ELECTRIC LEAN EXTENDED OUT 1".

1984 - 1987 HONDA GL 1200
STEERING DAMPER INSTALLATION

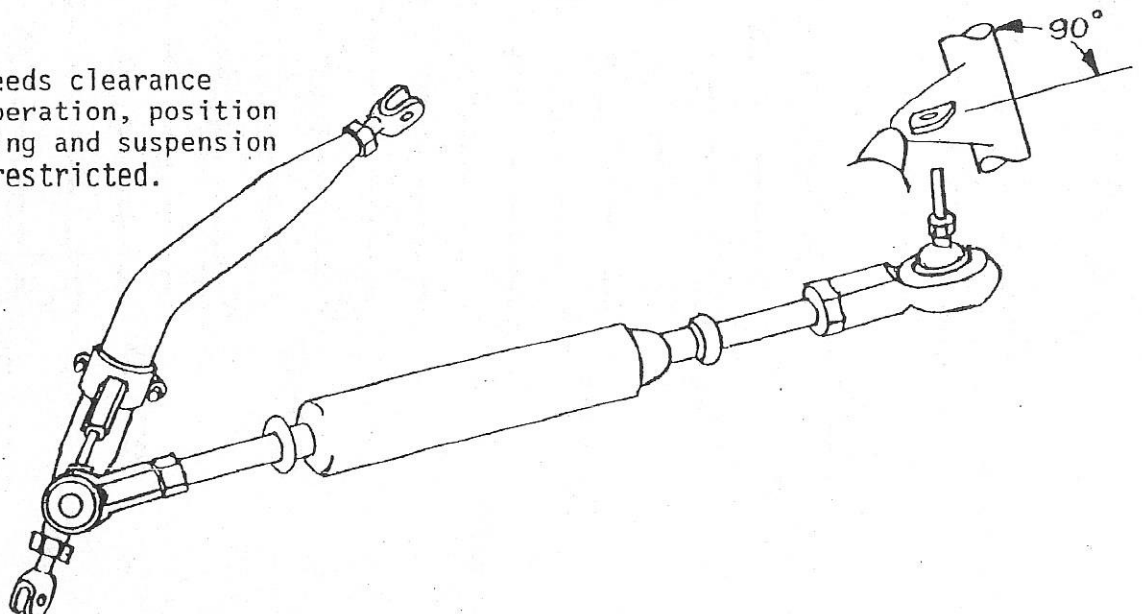
Drill $13/32$ dia. hole in the center of brake arm so th nut on the inside is an equal distance from the flanges, this enables a socket enough clearance when tightening.



Assemble as shown to forks. Torque to 25-30 ft. lbs.

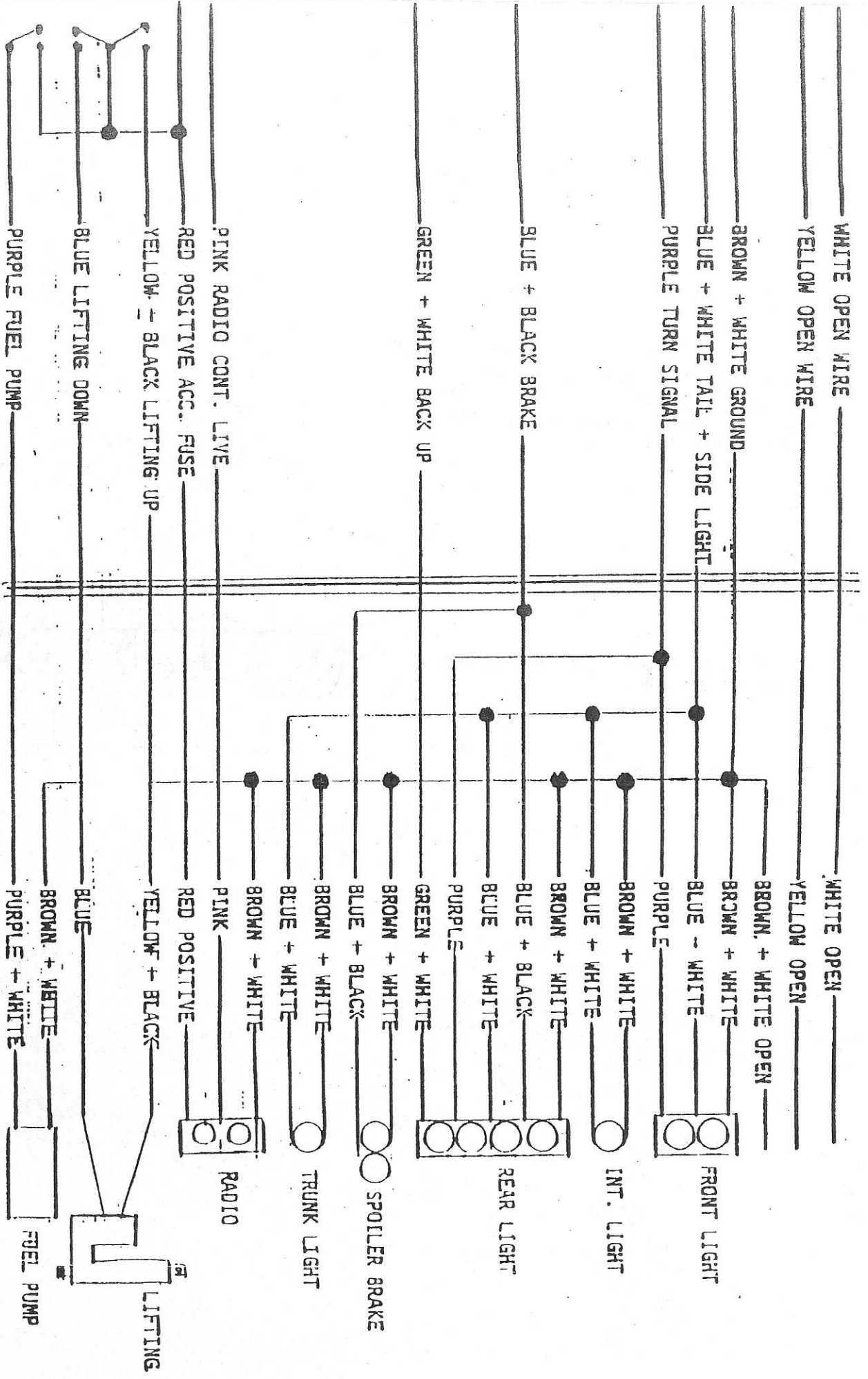


Damper needs clearance during operation, position so steering and suspension are not restricted.



MOTORCYCLE

SIDECAR



FRIENDSHIP III SIDECAR
FRIENDSHIP II SE

FRAME ASSEMBLY

