

2002 to Present HARLEY-DAVIDSON™

FLHT • FLHTC • FLHTCU • FL • FLT • FLHT • FLHS • FLHR

PARTS LIST

- 1 U-clamp assembly
- 1 Lower front clevis plate
 - 1 5/8 -18 x 3 H/H CS
 - 3 5/8 flat washer
 - 1 5/8 -18 nyloc nut
- 1 Upper rear eye bracket
- S/16* 1 ~~3/8~~-16 x 1 1/4 H/H CS
- 1 3/4 -16 x 1 3/8 socket head cap screw
- 1 3/8 -24 x 1 1/4 H/H CS
- 2 Flat washer
- 2 3/8 -24 nyloc nut
- 1 U-clamp & pad
- 2 1/4 -20 x 2 H/H CS
- 4 1/4 flat washer
- 2 1/4 -20 nyloc nut
- 1 Lower rear clevis bracket
 - 1 7/16 -14 x 1 1/2 H/H CS Gr. #8
 - 1 7/16 -14 x 1 3/4 H/H CS Gr. #8
 - 1 5/8 x 18 x 3 H/H CS
 - 1 5/8 nyloc nut
 - 3 5/8 flat washer
 - 2 lock washer
- 1 45-Degree clamp
- 1 70-Degree clamp
- 1 45-Degree boss
- 1 70-Degree boss
- 1 90-Degree adapter
- 2 Bent strut complete
- 2 Rod End, 3/4 -16 w/ 3/4 -16 jam nut
- 1 Instructions, Manual and Warranty card
- 1 **Optional:** Damper, 1 1/2" strut clamp, 2 1/4" fork leg clamp
- 1 **Optional:** Brake, ? X 24 double banjo bolt, brake line, and coupler

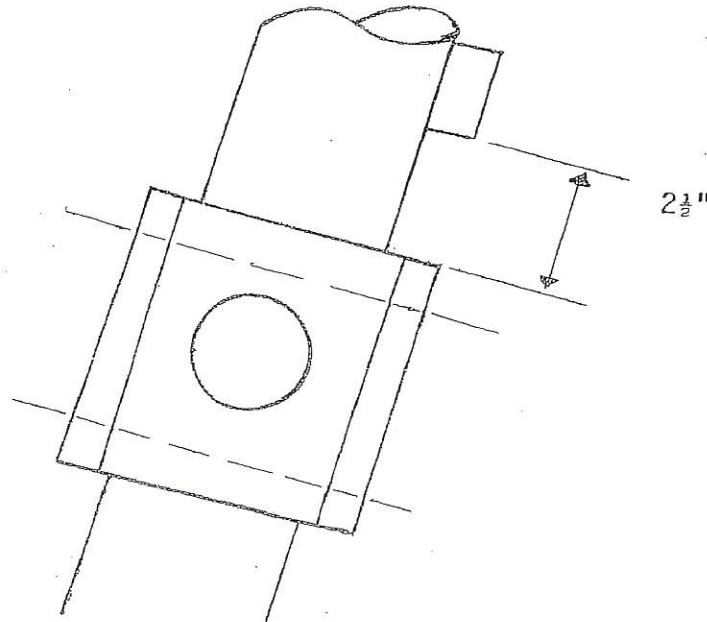
California Sidecar Parts & Service

STEP 1: PREPARING MOTORCYCLE TO INSTALL SIDECAR MOUNTS

- 1) Remove seat and right side cover of battery.
- 2) Remove the crash guard by removing both the upper and lower crash guard bolts.
- 3) Remove the battery.
- 4) Once the crash guard bolts are removed, the thread hole in the frame needs to be tapped out. Using a 3/8 x 16 course tap, tap from top to bottom so that a 3/8 x 16 x 3/4 hex head bolt will thread in from the bottom side.
- 5) Remove the 2 bolts that hold the battery box to the frame (T-40 torax) and lower the battery box approximately 1/2 inch.

STEP 2: INSTALLING UPPER FRONT U-CLAMP & EYE

- 1) Place on bike frame on down tube just in front of heads high as possible at 90-degrees to the bike. Torque to 60 foot pounds.



STEP 3: INSTALLING LOWER FRONT CLEVIS PLATE

- 4) Remove driver's floor board on right side. Place plate in same location, then replace floor board.

STEP 4: INSTALLING LOWER REAR MOUNT

- 4) Remove both the upper right swing arm cap bolt and the lower left swing arm cap bolt.
- 5) Place mount into position and attach with bolts that are provided.
- 6) Attach on the right side to the weld nut on frame with the 7/16 bolt you removed.

STEP 5: INSTALLING THE UPPER REAR MOUNT

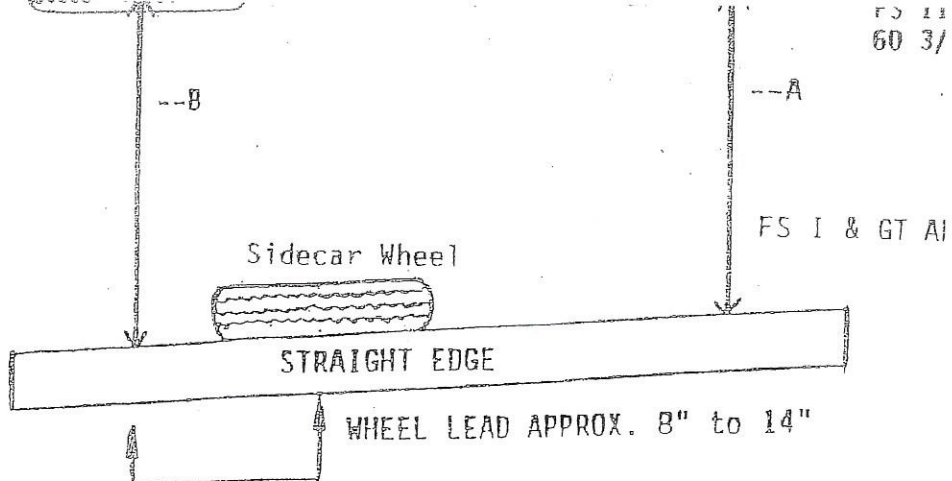
The upper rear mount will be mounted to the frame and fastened in 3 places. It is recommended that you locate these 3 points and simulate where the mount will be placed as follows.

- Inside lower crash guard.
 - In front of the upper crash guard bolt.
 - Left Rear side of battery box.
- 1) When installing leave all bolts loose.
 - 2) Install the U- clamp assembly with bolts provided. It may be necessary to remove upper crash guard bolt first.
 - 3) Install left rear bolt of battery box with bolt provided.
 - 4) The lower hole of the mount should be between the crash guard and the frame of the bike.
 - 5) Then replace the upper crash guard bolt.
 - 6) Tighten all bolts. First clamp assembly, torque the socket head cap screw 55ft. lbs, left rear of battery box, and the lower bolt on mount.

STEP 6: FINISHING UP

- 1) Remember to raise the battery box lowered in Step 1.5 and secure the bolts.
- 2) Reinstall the battery and other items you may have loosened or removed.
- 3) Replace the crash guard and upper mounting bolt removed in Step 1.2.
- 4) It is necessary to cut a notch in the battery side cover before it can be reinstalled over the sidecar mount. Visually align the cover and mark the top on both sides of the just installed upper rear mount. Once the panel cover is marked, cut the cover using the enclosed template.

FS I & GT APPROX. 58" +



TOE IN:

DISTANCE A SHOULD BE APPROX. 1" TO 1 1/4" LESS THAN DISTANCE B. MEASURE FROM THE CENTER OF THE MOTORCYCLE RIM TO THE OUTSIDE OF THE SIDECAR WHEEL.

SIDECAR WHEEL LEAD:

THE DISTANCE THE SIDECAR AXEL LEADS THE REAR AXEL OF THE MOTORCYCLE SHOULD BE 8" TO 14".

NOTE: MOUNT AS FAR BACK AS THE BRACKETS WILL ALLOW.

LEAN OUT:

LOAD THE MOTORCYCLE AND SIDECAR WITH THE NORMAL AMOUNT OF WEIGHT TO BE CARRIED LEAN THE BIKE OUT FROM THE SIDECAR APPROX. 1/8".

FRAME HEIGHT:

DISTANCE FROM BOTTOM OF FRAME TO GROUND.

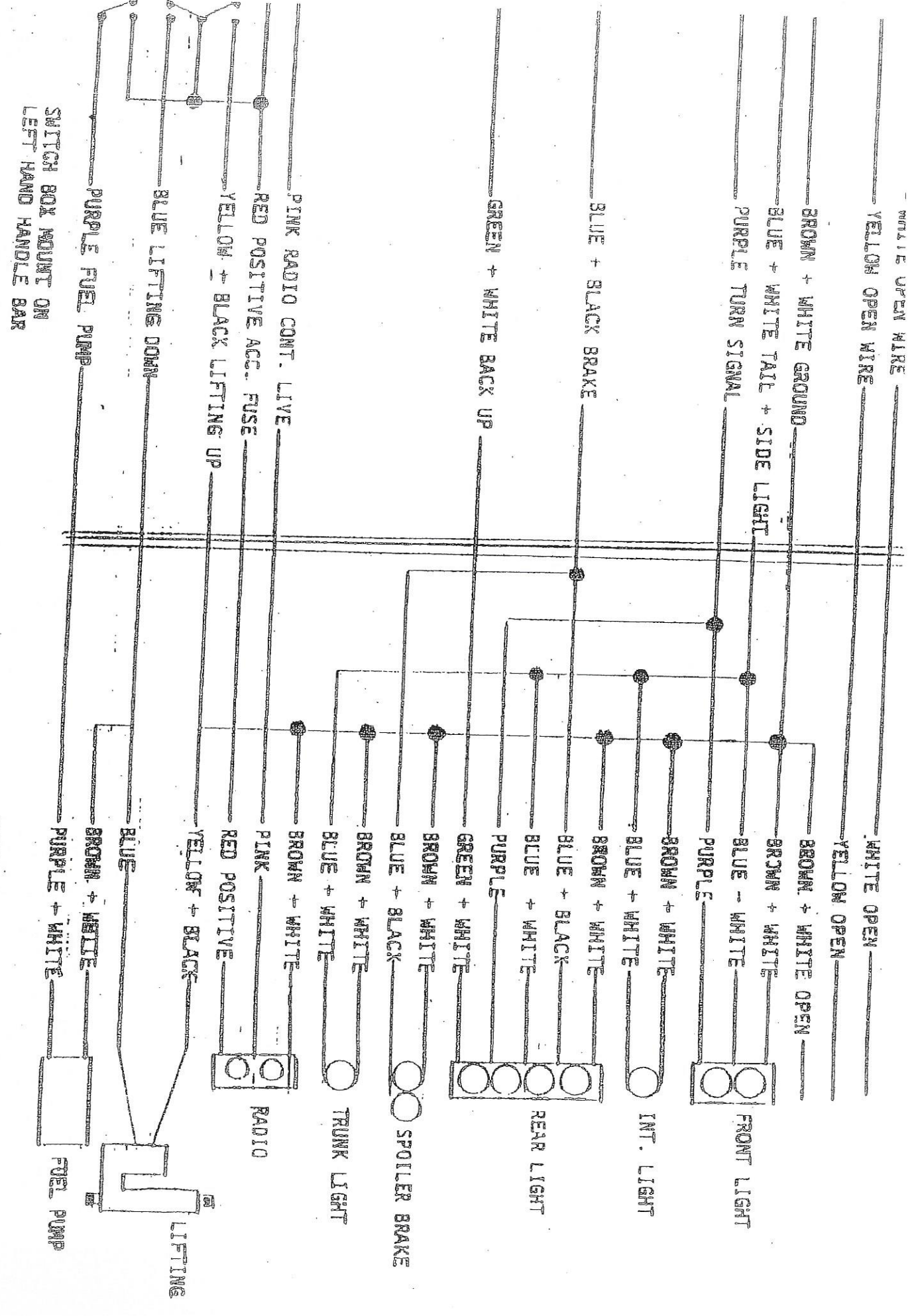
FS I - II - III :

APPROX. 9" FRONT
APPROX. 10" REAR

COMPANION GT:

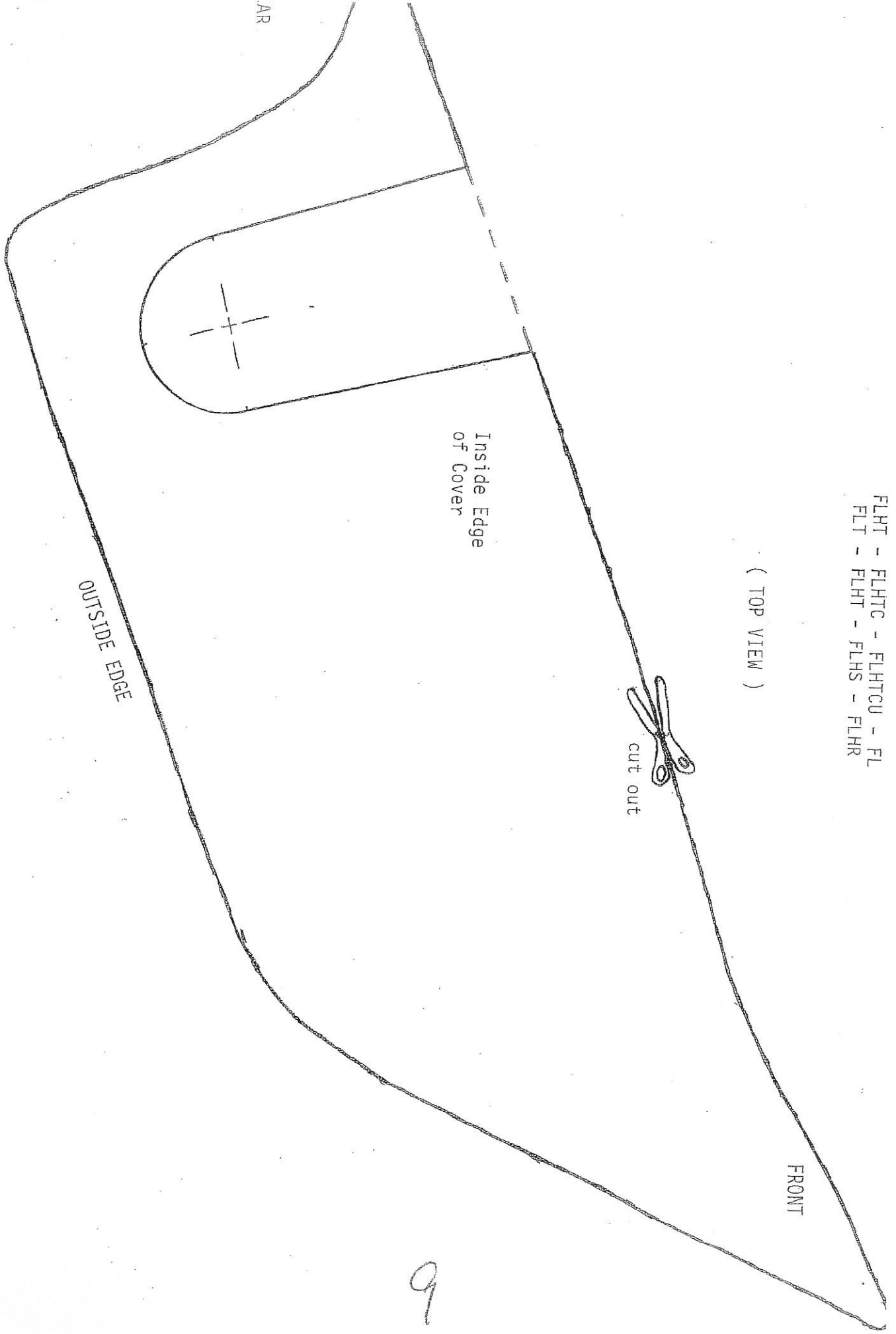
APPROX. 9 1/2 " FRONT
APPROX. 10" REAR

NOTE: WHEN SETTING FRAME HEIGHT WITH ELECTRIC LEAN ON FRIENDSHIP II & III HAVE AT LOWEST POSITION. ON FRIENDSHIP I AND COMPANION GT HAVE ELECTRIC LEAN EXTENDED OUT 1".



FLHT - FLHTC - FLHTCU - FL
FLT - FLHT - FLHS - FLHR

(TOP VIEW)

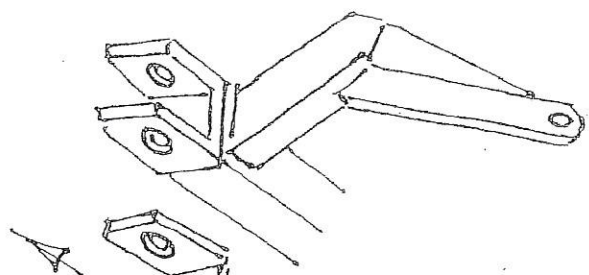


9

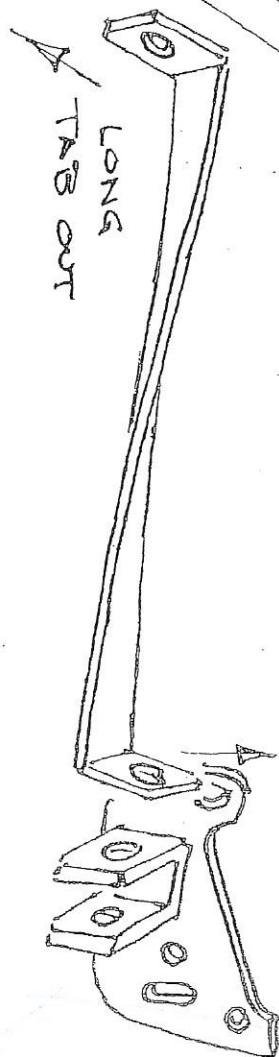
ADDENDUM
2002 FLHT, etc.

Lower Rear & Lower Front

LOWER
REAR
MOUNT



LONG
TAB OUT



SHORT
TAB UP

LOWER
FRONT
MOUNT

FRONT



1984 - 1993 HARLEY DAVIDSON FLT - FLHT - FLHS

