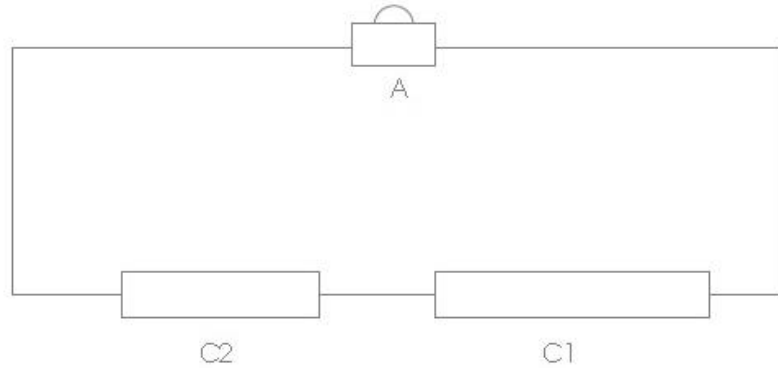


A = ONBOARD SWITCH
C1 = 9 PIN CONNECTOR
C2 = 6 PIN CONNECTOR



C2 - 5 = Blue 12 Volt Power

C1 - 4 = Red 12 Volt power

C2 - 6 = Orange Actuator

C1 - 5 = Black Ground

Programming Remote:

Remove carpet from the inside of your trunk to locate your remote receiver.

Remove fuse from fusible link.

Replace fuse and within 10 seconds press the onboard switch 3 times. It will click.

Within 10 seconds press the unlock button on your 1st remote, then do the same for all other remotes. Each remote that you program the receiver box will click.

You will have to program all remotes as the receiver will erase any remotes previously programmed.

When you are done the receiver will click twice after you hear that test all remotes for operation.

REMOTE BOX (MAGIC ALARM)

LARGE CONNECTOR

RED POSITIVE

BLACK GROUND

SMALL CONNECTOR

BLUE POSITIVE

ORANGE GREEN ON ACUATOR

ACUATOR

GREEN ORANGE ON REMOTE

BLUE GROUND