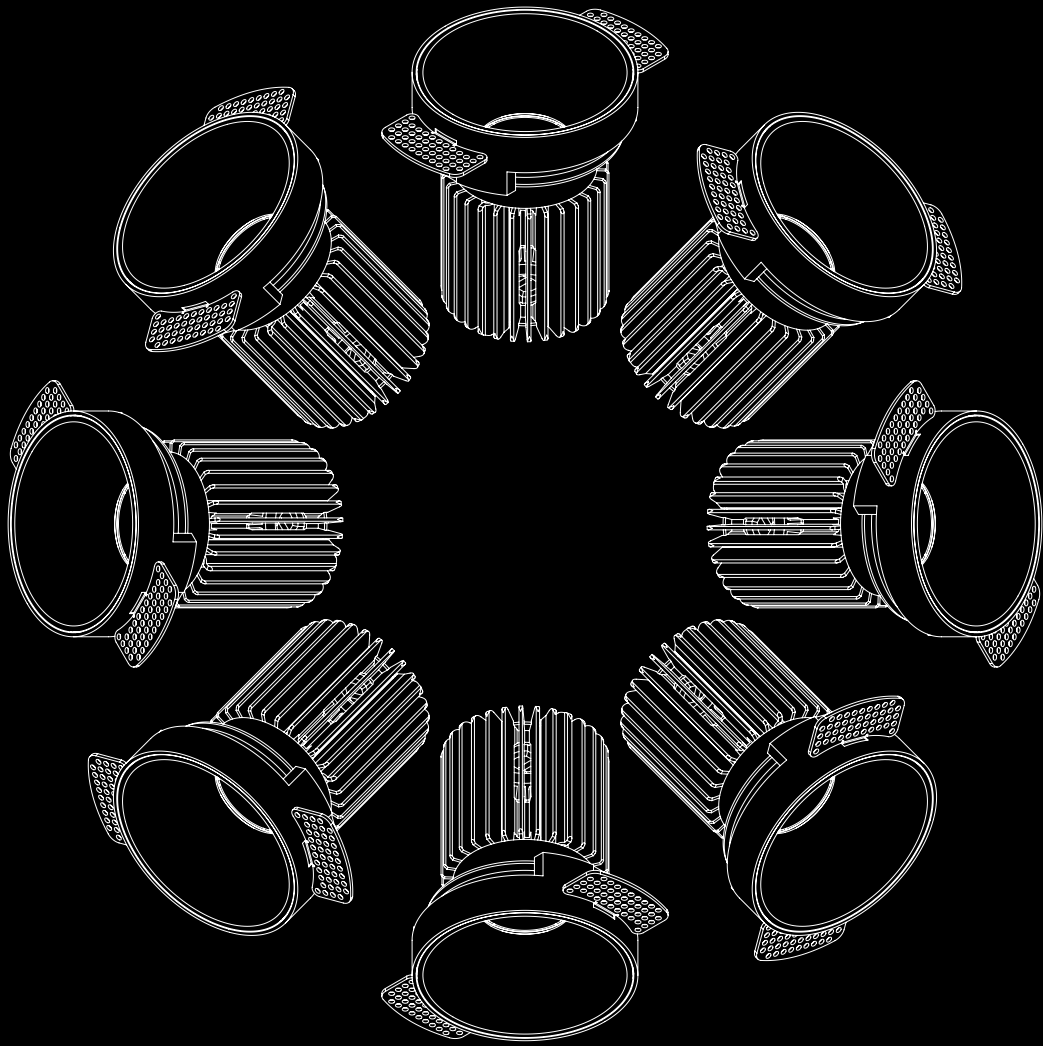


I B L



G A Z E T T E

Volume Four — 2021

IBL

UK

1 Home Barn Court,
The Street,
Effingham,
Surrey,
KT24 5LG,
United Kingdom

t: 0844 822 5210

f: 0844 822 5211

Hong Kong

Unit B,
Shing Fung Industrial
Park, Hong Kin Road,
DD212 L8, Sai Kung,
New Territories,
Hong Kong

t: +852 2763 1255/1256

f: +852 2763 1262

DISTRIBUTORS:

IBL Lighting

United Kingdom
info@ibl.co.uk

LIGHTKIT NZ

New Zealand
carl@lightkit.co.nz

Creative Lighting Asia

Hong Kong
hongkong@cla.asia

IBL Lighting Partners

UAE
info@iblme.com

Light Project

Australia
info@lightproject.com.au

Targetti NZ Ltd

New Zealand
info@targetti.co.nz

IBL Lighting Africa

Ballito, South Africa
lee@ibllightingafrica.co.za

LSI

India
www.lsiindia.com

CONTENTS

Welcome	04
Seaside Finolhu - Maldives	06
Dark Round Range	14
Crown Hotels & Villas - Australia	18
Toto Headquarters - Indonesia	24
Partnership with Nocturnal	30
3Sixty Bar & Nightclub - UK	34
PWC, Commercial Bay - New Zealand	36
DLF Place Mall - India	40
Distributors & Partners	44



WELCOME

Andrew Penfold, Founder and CEO

Welcome to the first edition of the IBL Gazette in 2021.

To date, 2021 has been a busy year for IBL. Over the past few months, IBL has upgraded our website to include hundreds of new product options, along with enhanced functionality, making the specification and selection of products and applicable technical information faster and easier.

Our commitment to the continuing development in IBL optics, custom 'project-specific' products and product design has resulted in IBL's involvement in supplying many prestigious international projects.

Some of the most recent projects include the Peninsula Hotel London, Star City in Hong Kong,



the Crown Resort & Villas Sydney, Toto in Jakarta, Jumeriah Gate in Dubai and DLF Place in New Delhi, India. Many of these projects are featured in this edition of the Gazette.

LIGHTKIT has also continued to develop and release new products, with the introduction of the RAIL lineal lighting range. The new RAIL fixtures are also featured in the new LIGHTKIT catalogue.

IBL are also proud to be introducing another suite of new products - the DARK Round family.

The onset of COVID-19 in 2020 was one of the most challenging periods in modern history, with the world locking down and international borders closed.

Despite the challenges this produced, there is now some light at the end of the tunnel and IBL's global partnerships are becoming even stronger. This edition celebrates our ongoing collaboration with IBL

global distributors and partners. We are proud of our continued longstanding relationship with all our partners, clients and our collaborators.

IBL will continue to be inspired by lighting designers, architects and everyone that is involved in the design of the magnificent spaces we work in around the world.

I hope you enjoy this edition of the IBL Gazette.

Andrew Penfold

FEATURED HOSPITALITY PROJECT

SEASIDE FINOLHU

LUXURY RESORT, MALDIVES

Lighting design by Maurice Brill Lighting, UK



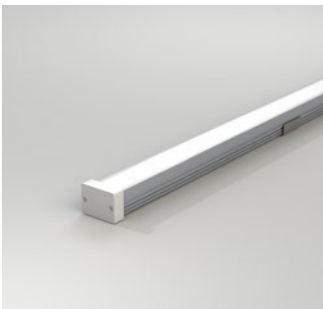




Nestled on a private atoll in the warm waters of the Indian Ocean is the recently completed Finolhu Island Resort, Maldives.

This beautiful resort was designed by Maurice Brill in London. It was also the first collaboration between IBL and our architectural exterior partners, Nocturnal Lighting.

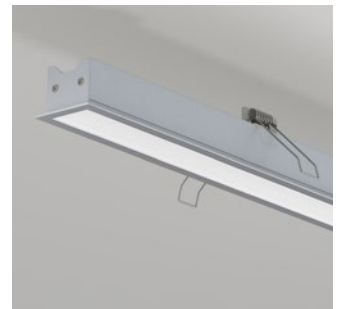
IBL Lighting Africa supplied many different lineal lighting solutions, including Ridge profile, Ridge Box, White Line profile, IP65 LED tape, Neon Flex 22 profile, as well as a large number of Nocturnal Firefly Spikes.



Ridge Box 18x13mm
6518136



Neon Flex 22
6122X



White Line 35x27mm
6735276

Finolhu Resort was a complicated but prestigious project, implemented and supplied by IBL Lighting Africa.

IBL Lighting Africa, one of the group's newest partners, opened its doors in 2019.

The offices and warehouse are situated in the booming node of the Kwa-Zulu Natal North Coast, the area where the famous Shaka Zulu hails from on South Africa's eastern shores.

Headed up by once regular IBL customer and now partner, Wade Rasmussen gives our South African team an in-depth knowledge and understanding of the IBL product range, enabling complete authenticity when discussing projects with new clients.

The Finolhu Resort project required many different applications. The onsite contractors worked closely with IBL Lighting Africa to ensure the correct products were utilised for each specific application.

With exciting projects in the developing region, the company looks forward to expanding and growing the brand showcasing the best of what we can offer.









Ridge 19x9mm
6518136



3528 24V LED Tape
3528



Neon Flex 22
6122X



White Line 35x27mm
6735276

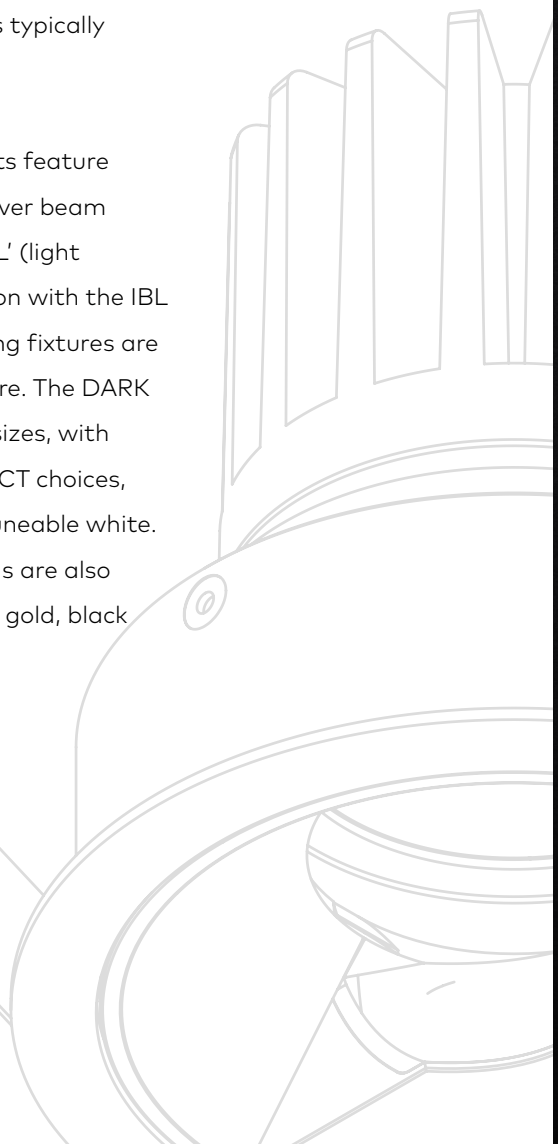


FEATURED PRODUCT GROUP

DARK

A traditional dark light recessed fitting that uses a polished reflector. Until recently, a highly polished specular reflector was usually only found in large diameter fittings that are limited in use to ballrooms, atriums and areas with unusually high ceilings. The new IBL DARK Round family of downlights is the result merging a traditional architectural downlight with advanced optics and specular reflectors typically reserved for larger fittings.

The DARK range of downlights feature advanced optics with cross-over beam technology, using the IBL 'LGL' (light gathering lens). In combination with the IBL specular reflector, the resulting fixtures are elegant, efficient and low glare. The DARK Round is available in various sizes, with a large range of optics and CCT choices, including dim to warm and tuneable white. Trimless and trimmed versions are also available, with polished silver, gold, black and white reflectors.





DARK ROUND

Merging traditional architectural downlights with advanced optics and specular reflectors

SIZE OPTIONS



DARK 100
Bezel: 105mm
Cut Out: 100mm



DARK 80
Bezel: 85mm
Cut Out: 80mm



DARK 60
Bezel: 65mm
Cut Out: 60mm

REFLECTOR OPTIONS



MATT WHITE



MATT BLACK



SILVER CHROME



DARK CHROME



CHAMPAGNE GOLD

VARIATIONS



FIXED



FIXED TRIMLESS
FRONT OF CEILING



FIXED TRIMLESS
BACK OF CEILING



TILT



TILT TRIMLESS
FRONT OF CEILING



TILT TRIMLESS
BACK OF CEILING



WALLWASH



WALLWASH TRIMLESS
FRONT OF CEILING



WALLWASH TRIMLESS
BACK OF CEILING



Perched majestically on the shores of the harbour in Sydney's Barangaroo precinct is the recently opened 6-star Crown Hotel & Villas.

The latest development by Crown brings together an opulent blend of luxury hotel rooms, suites, private villas and 5-star dining. The unique floor plan was designed by New York interior designers Myer Davis and lighting for all areas of the hotel interior and exterior was designed by award winning lighting designers F-POV.

IBL/LIGHTKIT were involved in developing lighting solutions for all internal areas, including restaurants, bars, public spaces, the hotel rooms and private villas. The project was supplied by IBL/LIGHTKIT Australian distributor Light Project.

CROWN HOTELS & VILLAS BARANGAROO, SYDNEY FEATURED HOSPITALITY PROJECT



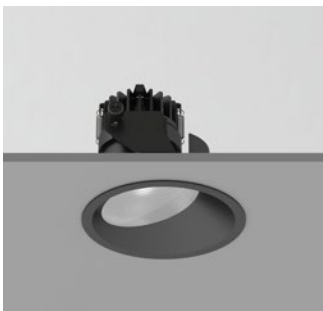
LIGHTKIT Bevel Adjustable Small
ABS RAX



LIGHTKIT Bevel Adjustable Medium
ABM RAX



LIGHTKIT Bevel Fixed Large
ABL RFX



LIGHTKIT Bevel Wallwash Medium
ABMRWWL35X



LIGHTKIT Suspended Small Spot
ATSSSX



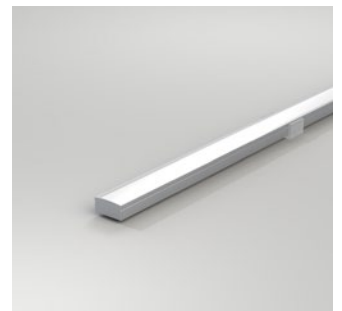
LIGHTKIT Tube Spot Large
ATSALX



LIGHTKIT Rail Surface Small
LRSSF6X



Ridge Nano 8x9mm
6908096



Ridge Flat 17x8mm
6917086







FEATURED COMMERCIAL PROJECT

TOTO HEADQUARTERS

INDONESIA

Supplied by our partners in Indonesia, Creative Lighting Asia, the recently completed TOTO Headquarters is a testament to modern interactive office environments.

Based in the commercial district in Jakarta, TOTO uses an array of IBL fixtures including tuneable white 2700K - 6500K Cone 80, Cone 120 and Cone 130 downlights, Tube 60 track spots and various IBL lineal systems.

Sitting above a huge feature Barrisol ceiling, the TOTO project blends design and lighting technology seamlessly.

DESIGN TEAM

Client: PT Surya TOTO Indonesia

Architecture: Airmas Asri Architects

Lighting Design: Lumina Group

Construction: Shimizu Corp

Photography: Nacasa & Partners, Inc.



Tube 60 Track
240601X



Cone 80
224X



Cone Tilt 90
224TX



2835 24V Tunable White LED Tape
3528



Cone 130
2124X



Pin 90
221X



Lighting design by Lumina Group
Photos by Nacasa & Partners



MINI UNIT



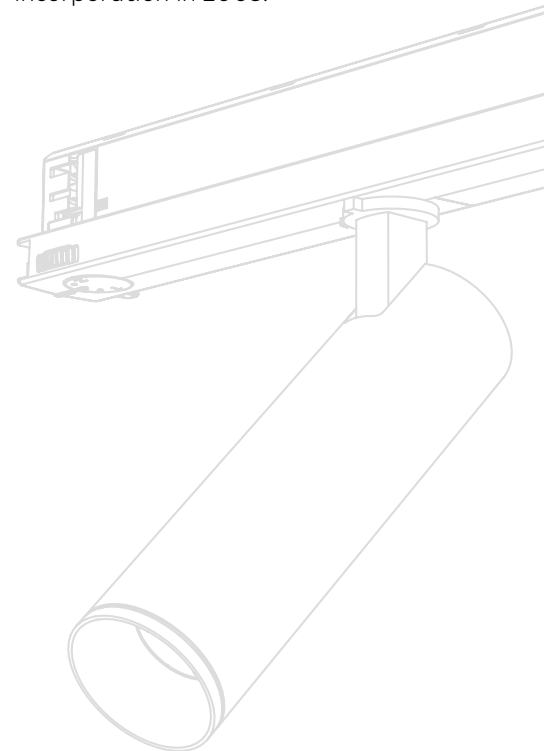
Toto HQ Indonesia was supplied by Creative Lighting Asia, partner and supplier of IBL in Asia.



CLA have been IBL partners since 2010. With their head office based in Hong Kong, CLA have 10 offices strategically located throughout Asia.

Working alongside international designers, CLA have become known for their expertise in professional lighting for both interior and exterior major projects across the Asian region.

Their engineers, sales staff and support team work in every segment including Hospitality, retail, commercial fit outs, hotels and Casino and luxury villas. CLA are globally recognised for their immense body of work since their incorporation in 2003.



NOCTURNAL LIGHTING PARTNERS WITH IBL

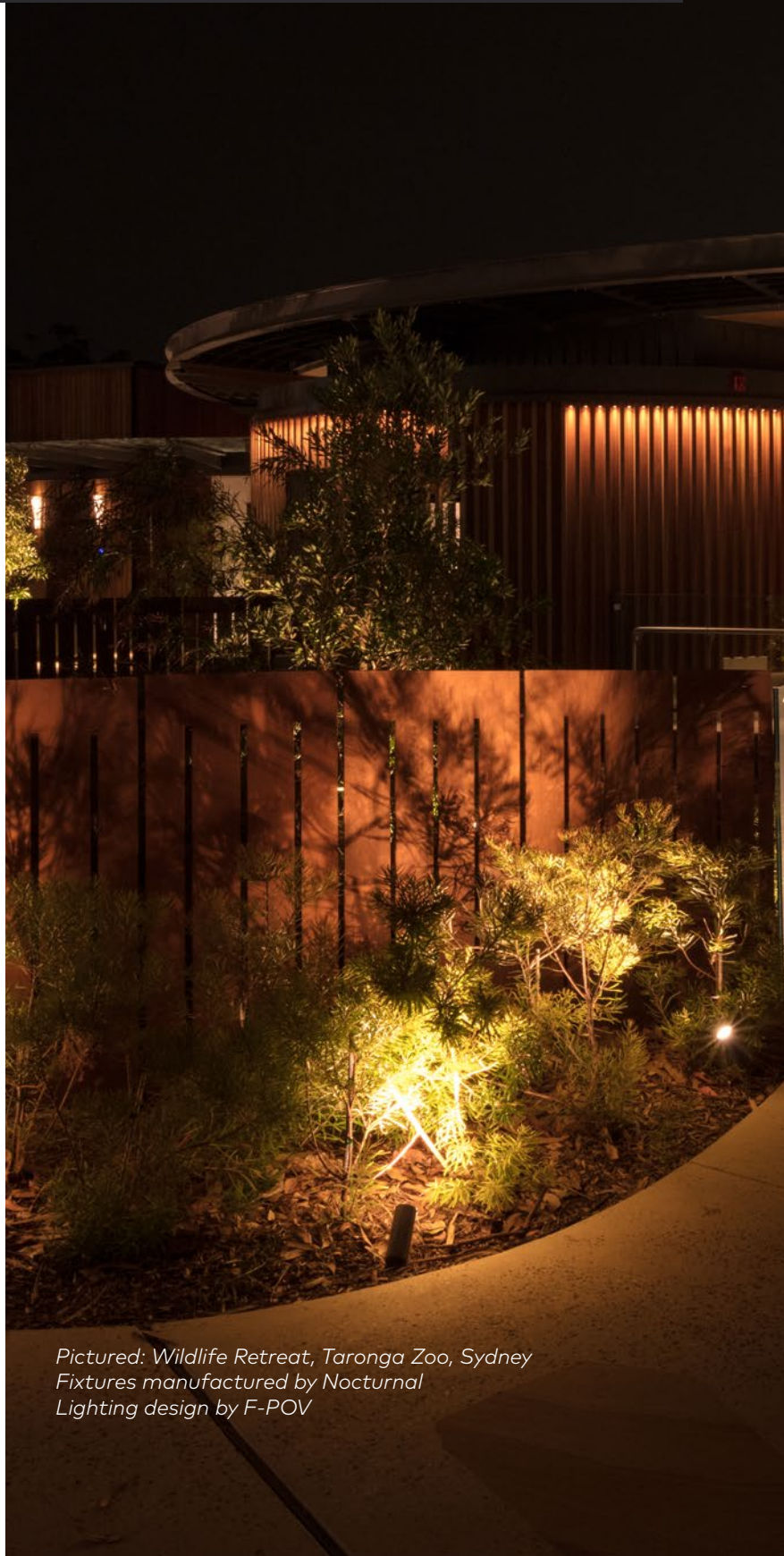
Located 2 hours north of Sydney on the east coast on Australia, you will find a specialist design and engineering factory, dedicated to manufacturing the highest quality lighting products in Australia.

For over 10 years, Nocturnal Lighting has been recognised as a premium manufacturer of exterior, interior and customised lighting solutions.

Nocturnal has a large portfolio of standard products as well as the ability to create unique project specific products. Using only the highest-grade materials, Nocturnal products are manufactured to withstand the harshest exterior locations, yet beautiful enough to compliment any interior space.

IBL and Nocturnal have formed a partnership for all international markets outside of Australia and New Zealand. We recognised a similar approach to high quality, high performance products that were inspired by global designers. We share the same values, commitment and company ethos.

Together, IBL and Nocturnal work with our clients in global markets to design, develop...



*Pictured: Wildlife Retreat, Taronga Zoo, Sydney
Fixtures manufactured by Nocturnal
Lighting design by F-POV*







... and supply the highest quality light fittings available.

Exterior, architectural, decorative and custom - Nocturnal offers a comprehensive range of both standard architectural and decorative products, as well as 100% bespoke solutions.

Materials such as solid brass feature in the exterior range. Every component is designed and meticulously machined to suit a specific application. All products are manufactured, machined, finished, powder coated, assembled and, after a rigorous QC process, packed and shipped from the Nocturnal factory.

Nothing is left to chance in this process.



FEATURED HOSPITALITY PROJECT

3SIXTY BAR & NIGHTCLUB HADRIAN'S TOWER, NEWCASTLE UK

Located on the 27th floor of Hadrian's Tower, the 3Sixty champagne bar features a variety of IBL fittings.

Hadrian's Tower is the highest building in Newcastle, featuring 26 floors of high-end apartments, topped by the luxurious 3Sixty champagne bar.

When entering the champagne bar, the 3Sixty logo has been integrated into the floor continuing up on to the welcome desk. IBL Neon Flex is used to achieve the effect, chosen for its ability to be pixelated.

The rest of the bar features IBL Linear profiles, such as RGBW Pixel Neon Flex 22 in the floors, animated and controlled via DMX. Ridge Flat was used for bar backlights and Cove profiles for shelving illumination.

DESIGN TEAM

Client: Highstreet Group

Architecture: Airmas Asri Architects

Lighting Design: Park Lighting
Design, UK

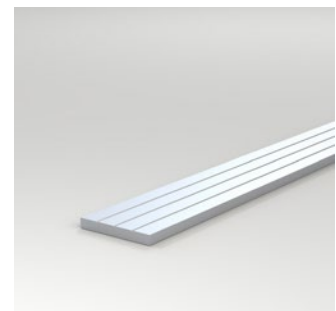
Contractors: T Clarkes



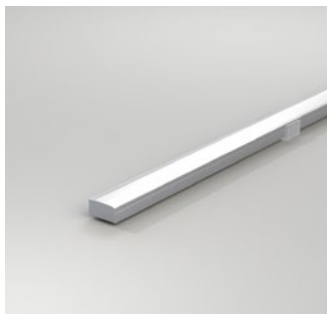
Mini Cove 8x8mm
6608081



Neon Flex 22
6122X



Ridge Flat Bar 20x2.5mm
69202-5



Ridge Flat 17x8mm
6917086



Cove Curved Large 30x30mm
663030X



Weiss Nano 12x9mm
6712096





FEATURED COMMERCIAL PROJECT

PWC, COMMERCIAL BAY

AUCKLAND

Architect: WAM
Lighting Design: BECA
Photos by Jason Mann Photography





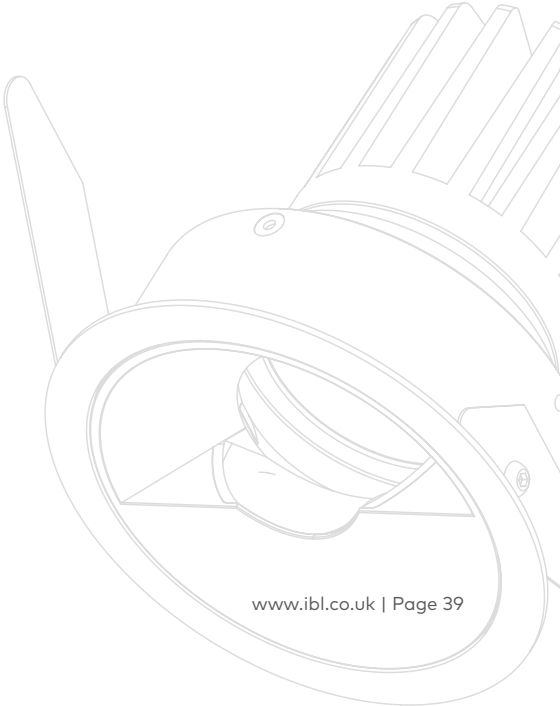
PWC, Commerical Bay was supplied by LIGHTKIT New Zealand, our partner and supplier in New Zealand.

LIGHTKIT New Zealand was established at the same time LIGHTKIT was first incorporated.

Also working with Korean manufacturer KKDC, the LIGHTKIT NZ operation is the longest-standing LIGHTKIT partner.

Headed by Carl Moselen, LIGHTKIT New Zealand have a team of talented staff that are able to service the needs of specialist lighting designers and architects involved in high-end commercial and residential projects in Auckland.

The featured project is the recently completed PWC fitout in Auckland, where a special lineal system and surface mounted fixtures were developed – all in a special anodised finish.



DLF PLACE MALL NEW DELHI, INDIA

This spectacular shopping Mall in New Delhi has quickly become a destination for both locals and tourists alike.

Using a combination of IBL RGBW lineal LED, CAN140 surface mounted downlights and CONE Tilt adjustable LED downlights, the shopping centre is able to adapt to different themes throughout the year. Supplied by our IBL/LIGHTKIT partners in India, LSI.

LSI is amongst the leading architectural lighting solution providers in India. They have completed over 3000 projects – PAN India and overseas – in their last 19 years of operation, featuring an extensive body of work including airports, museums, hospitals, villas, commercial and entertainment hubs, hotels, heritage monuments, offices and much more.

Headquartered in New Delhi, LSI have offices in Mumbai and Bengaluru and a PAN India dealer network.





AVENUE COME TOGETHER

BON





DESIGN TEAM

Client: DLF

Consultant: KSA Lighting Designers

Architect: DPA

Lighting Supply: LSI



Cove Curved 16x16mm
661616X



Cone Tilt 65
274X



CAN140
246X

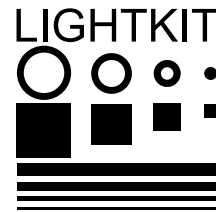
DISTRIBUTORS AND PARTNERS

FEATURED IN THIS EDITION



hongkong@cla.asia
+852 2815 9168

CLA have been IBL partners since 2010. With their head office based in Hong Kong, CLA have 10 offices strategically located throughout Asia.



carl@lightkit.co.nz
+64 (0) 9 366 0602

LIGHTKIT New Zealand, is the longest standing LIGHTKIT partner, headed by Carl Moselen, and also work with Korean manufacturer KKDC.



www.lsiindia.com
+91 11 3362 0700

LSI is amongst the leading architectural lighting solution providers in India, with offices in New Delhi, Mumbai and Bengaluru and a PAN India dealer network.



lee@ibllightingafrica.co.za

Situated in the booming node of the Kwa-Zulu Natal North Coast, IBL Lighting Africa opened its doors in 2019 as one of the group's newest partners.



info@ibl.co.uk

Exterior, architectural, decorative and custom, Nocturnal offers a comprehensive range of both standard architectural and decorative products, as well as 100% bespoke solutions.



info@ibl.co.uk

Located outside of London, near Surrey, IBL UK is the spiritual home of IBL. Established over 30 years ago, IBL is driven by a mix of architectural lighting and engineering advances.

WITH THANKS TO OUR OTHER DISTRIBUTORS AND PARTNERS:

TARGETTI

Auckland



Australia

IBL LIGHTING AND PARTNERS
L.L.C.

Middle East



Taiwan

