

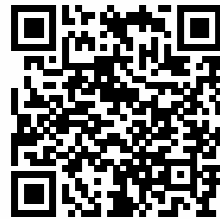
## Sweden

Runstensvägen 5,  
175 61 Järfälla,  
Sweden  
Tel: +46 8 611 41 20  
Email: info@luminans.com

## Shenzhen

409, Block 711, Pengji Industrial Park,  
Luohu Dist, Shenzhen 518004,  
China  
Tel: +86 158 1863 1173  
Email: info@luminans.cn

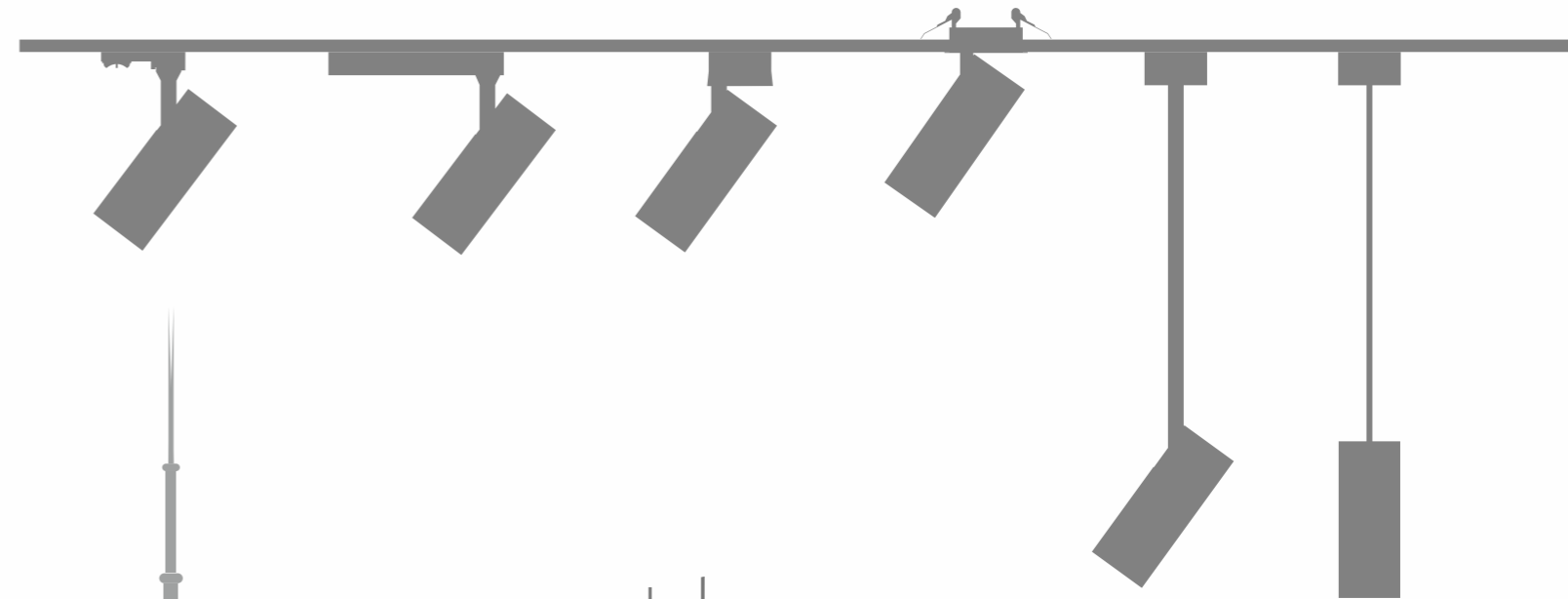
# Luminans



## Dongguan

No. 90, Humen Section, Taian Road,  
Humen Town, Dongguan City 523930,  
China  
Tel: +86 186 6458 9349  
Email: info@luminans.cn

[www.luminans.com/cn](http://www.luminans.com/cn)





Goniophotometer



Aging Room



Aging Line



UV Accelerated Weathering Tester



Spectroradiometer



SMT Line

## OEM/ODM Manufacturer

Luminans Lighting is a team of passionate and highly devoted coworkers offering to notch lighting technologies for all lighting needs. To ensure our position in the market, we always deliver cutting edge technology and carrying out research and development, developing the latest products in the field.

We have many years of accumulated experience and an abundance of satisfied clients and we have been recognized in various high-class hotels, commercial office buildings, shopping malls and parking areas. As a global company we take our responsibility to help decreasing the carbon footprint and by that protect our planets eco system, all of the material we use is in conformity with RoHS.

Our goal is to combine our experience with your ideas to create comfortable light atmospheres and esthetical pleasing designs. Luminans will help you all the way from the drawing board to the final lighting solution and beyond.



IP Rating Test



Corrosion Resistant Testing



EMC Tester





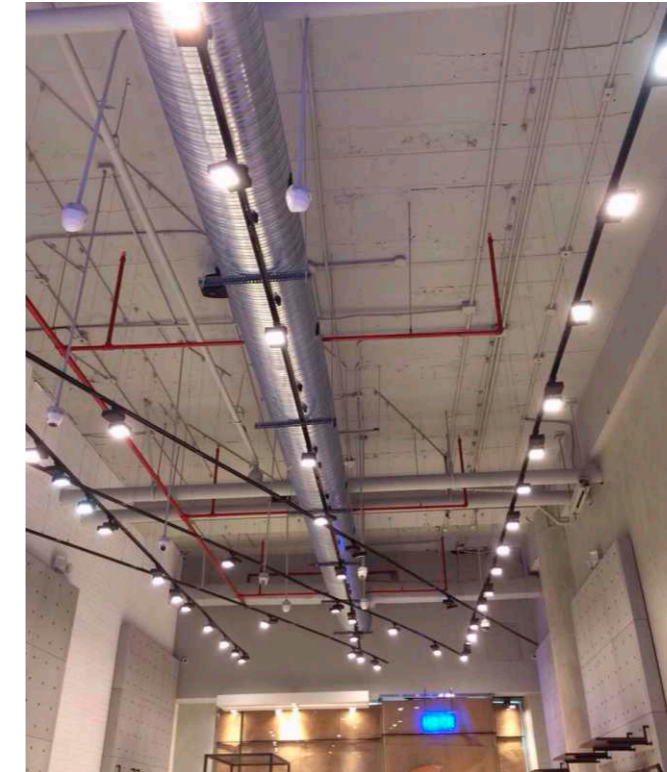
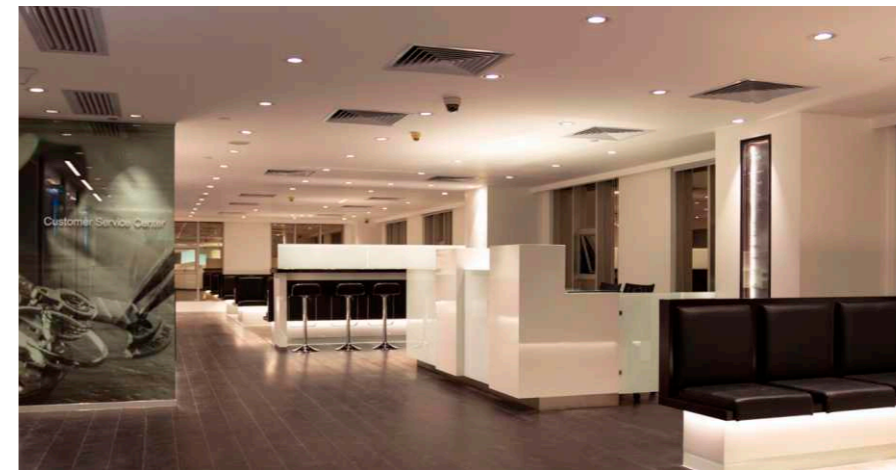
**DIY  
markets**



**One-Station Service**



**Professional  
projects**



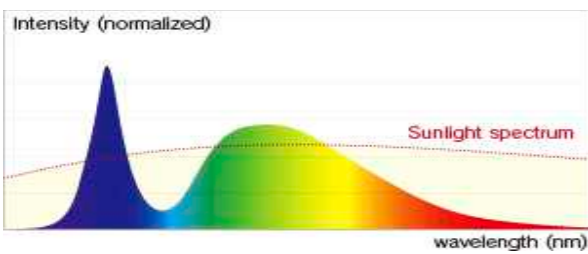
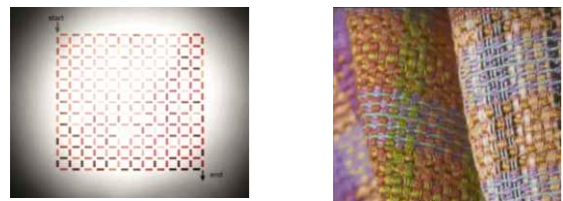
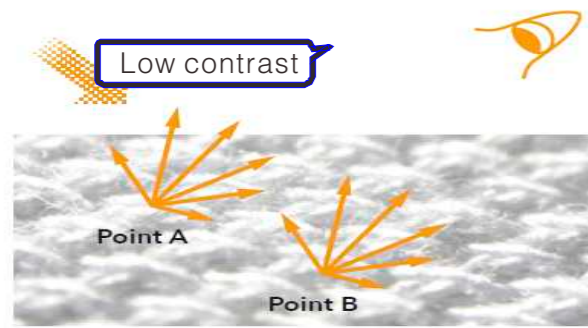
**Tailor Your Solutions**



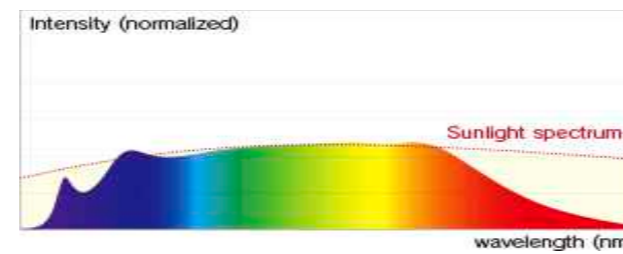
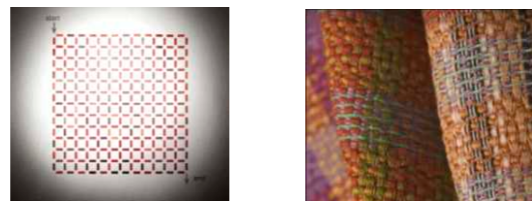
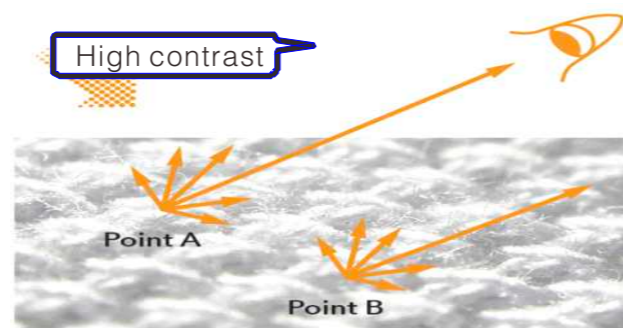
The New LED Technology we are using - Sense<sup>+</sup>

Which can reduce the glare, increase the definition and the texture layering.

### Ordinary LED

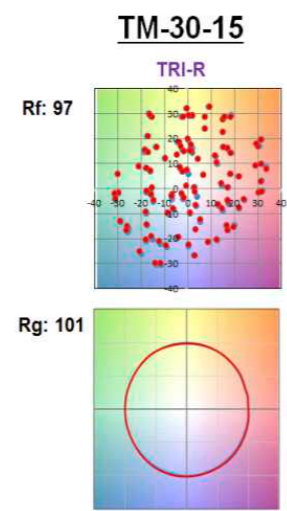
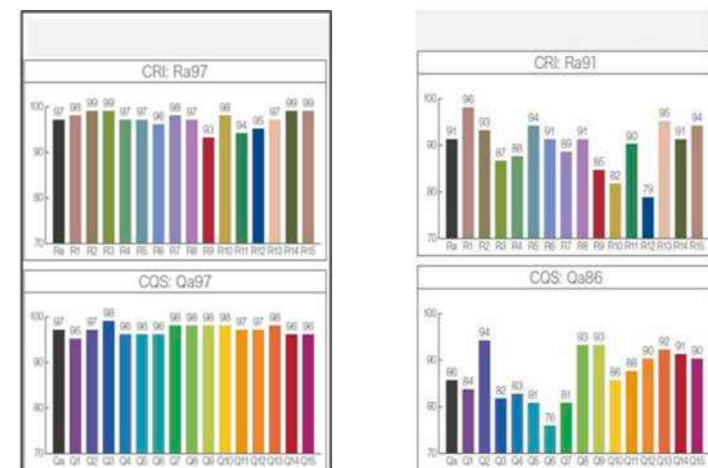


### Sense<sup>+</sup>



Bright up the objects with natural light

Based on new regulation of TM-30-15 to get a better color rendering.

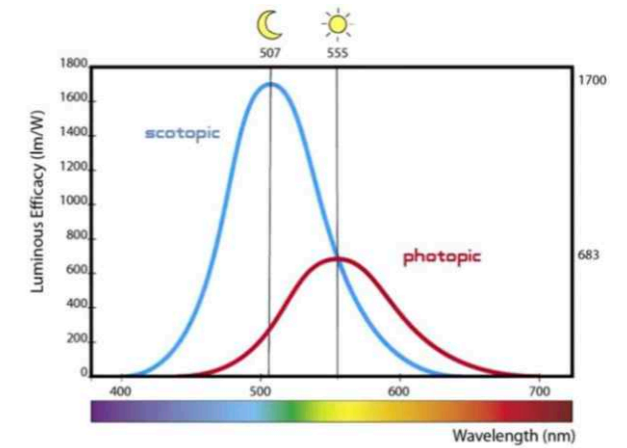


## Sense<sup>+</sup> has higher S/P ratio

What's the S/P ratio?

The scotopic/photopic ratio, or S/P ratio, is a multiplier that measures how much emitted light is useful to the human eye. These useful lumens are known as visually effective lumens (VELs).

- Scotopic vision : The vision of the human eye under low light conditions.
- Photopic vision : The human eye under well-lit conditions.



S/P ratio at 5000K.

- Conventional LED = 1.9
- Sense<sup>+</sup> = 2.2

The scotopic lumens provided by each light source.

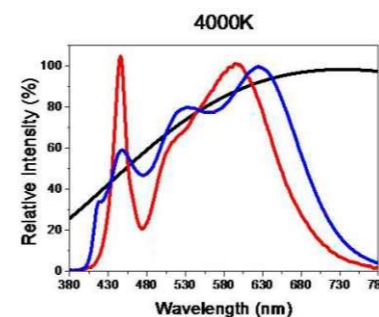
- Conventional LED scotopic lumens = 20lm x 1.9 = 38lm
- Sense<sup>+</sup> scotopic lumens = 20lm x 2.2 = 44lm

Sense<sup>+</sup> is brighter at night or dark environment.

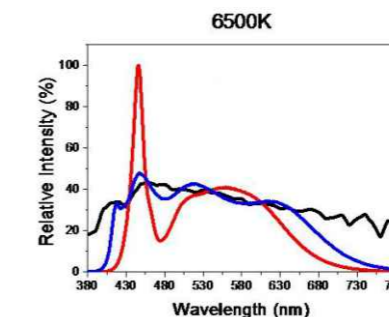
Spectrum closer to sunlight

Special encapsulation with specific ratio of phosphore to get spectrum closer to sunlight.

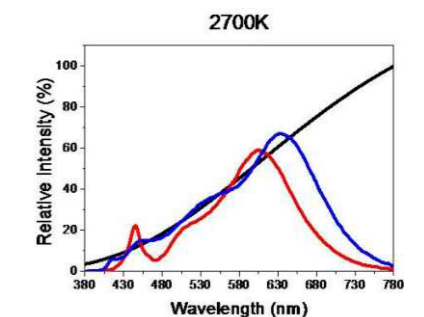
Morning Spectrum (4000K)



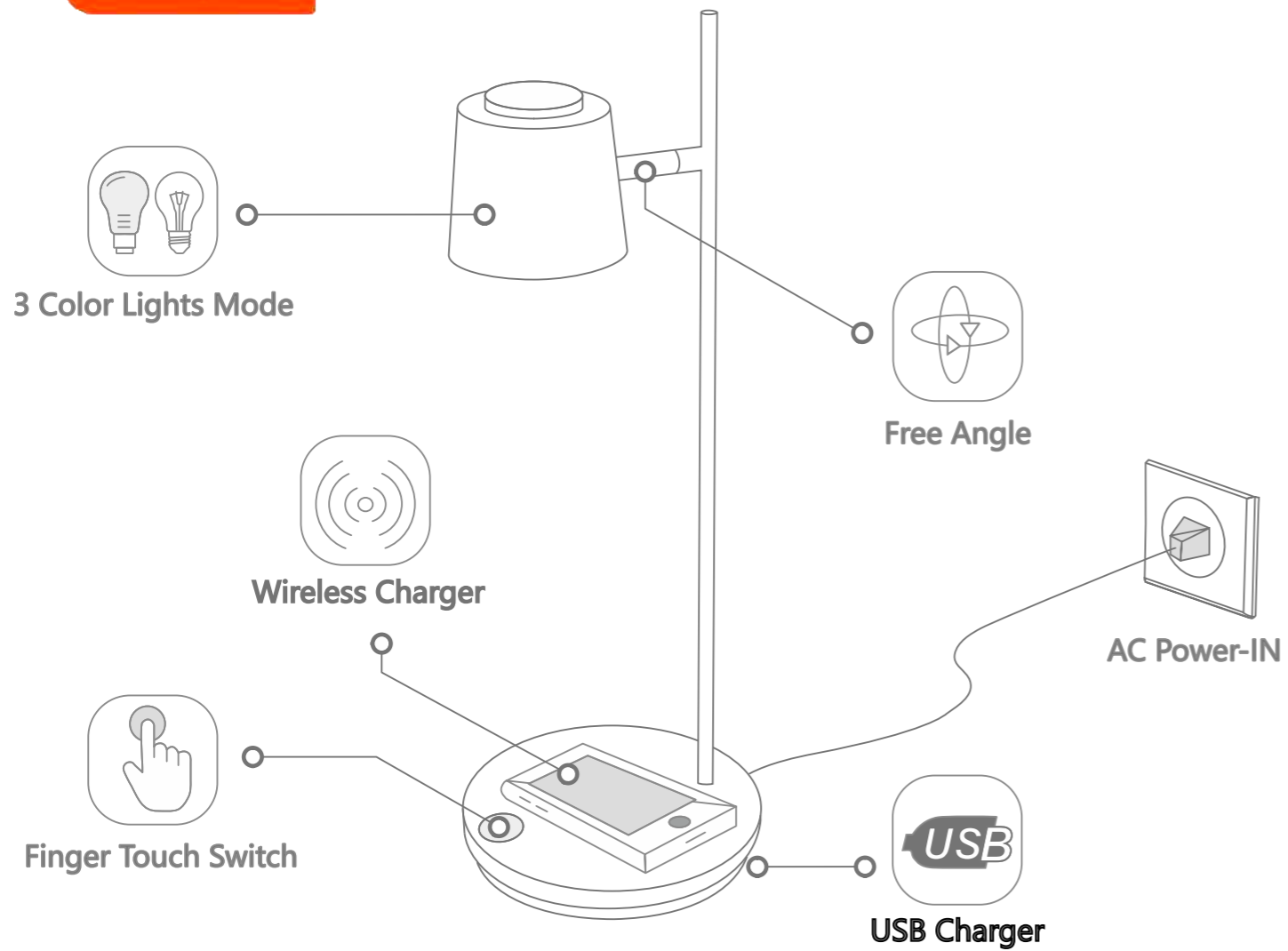
Afternoon Spectrum (6500K)



Evening Spectrum (2700K)







# MARIA

Highly efficient luminaire with nice looking modern design.

Compatible with Tuya app to control the table lamp with CCT changing, brightness adjust and on/off no matter you are inside or outside

Wireless charge which provides you a more convenient life style, as well as USB socket.

Touch function to fast on/off of the luminaire.



## Light technic



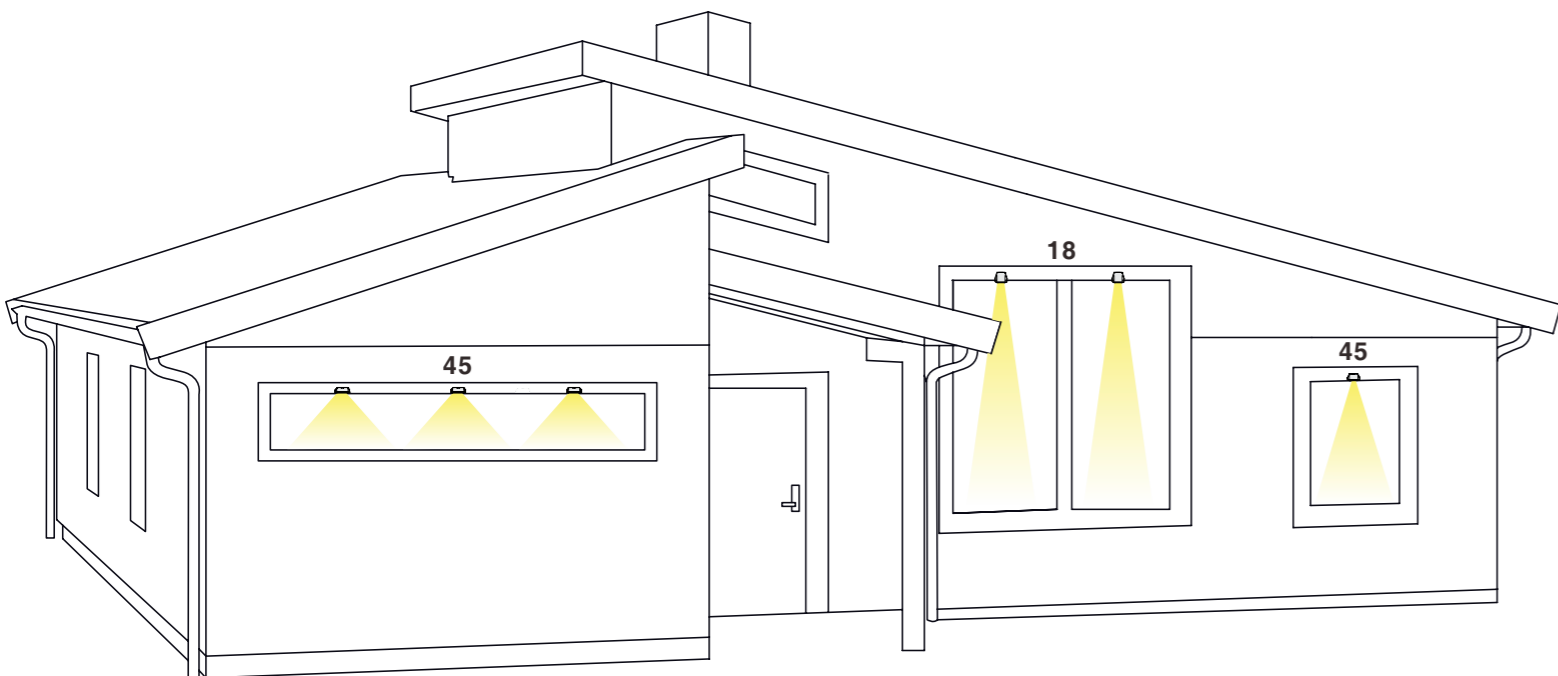
Art. no.	Output	CCT	Light source	Beam angle	Dimming
Maria 1	150mA, 36V	3000K-6500K	Luminans	90°	Wifi



## Applications







# DOT

Highly efficient luminaire with timeless design, suitable for most applications. Flexible through optional light control and various beam angles.

Whole luminaire made of high grade aluminum.

Lens made of high precision injection using clear acrylic. Light distribution Extra wide and narrow radiant.

Optional for on/off, phase cut and push dim.

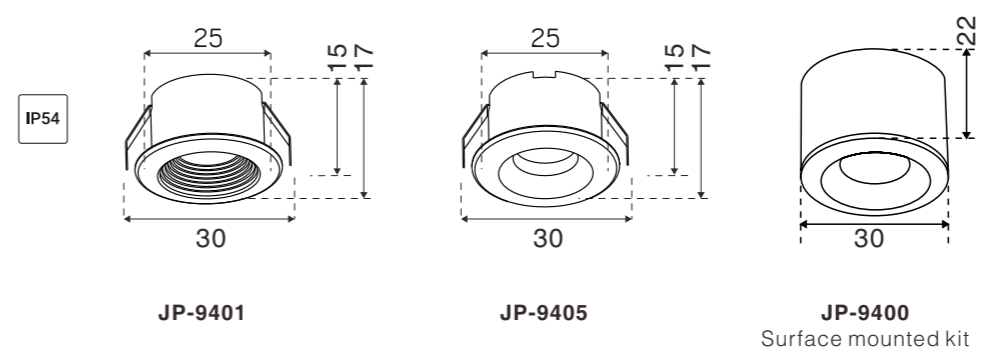


## Light technic



Art. no.	Output	CCT	Light source	Beam angle	Dimming
JP-9401	350mA, 3V	3000K	Cree	18°/45°	Triac/Push dim
JP-9405	350mA, 3V	3000K	Cree	18°/45°	Triac/Push dim

## Dimension (mm)





# ASTRID FIX

Highly efficient luminaire with timeless design, suitable for most applications. Flexible through optional light control and various beam angles.

Toolless junction box with connection terminal block: 3x2.5 mm (Leading-/Trailing Edge Dimmers) 5x2.5 mm<sup>2</sup> (Dali).

Front cover and outer ring of die-cast aluminum.

Diffuser made of high precision injection using milky acrylic. Light distribution Extra radiant for larger coverage.

Insulation-proof Luminaire that can be installed directly against insulation material.



# ASTRID

Highly efficient luminaire with timeless design, suitable for most applications. Flexible through optional light control and various beam angles.

Toolless junction box with connection terminal block: 3x2.5 mm (Leading-/Trailing Edge Dimmers) 5x2.5 mm<sup>2</sup> (Dali).

Front cover and outer ring of die-cast aluminum.

Diffuser made of high precision injection using milky acrylic. Light distribution Extra radiant for larger coverage.

Insulation-proof Luminaire that can be installed directly against insulation material.



## Light technic



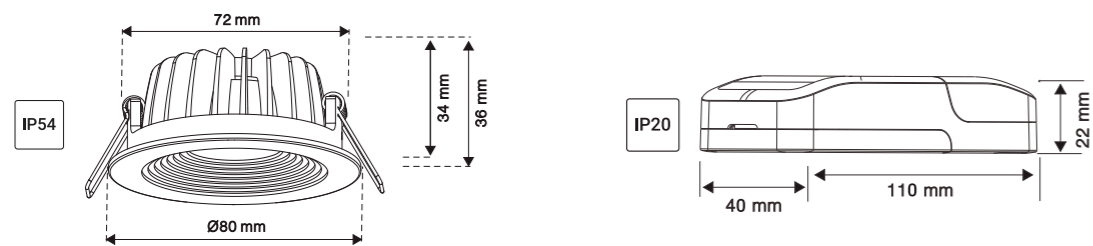
Art. no.	Output	CCT	Light source	Beam angle	Dimming
JP-9106	180mA, 36V	3000K	Cree/Luminans	14°/25°/36°	Triac/Dali 2
JP-9106CD	180mA, 36V	1800K-3000K	Luminans	14°/25°/36°	Triac/Dali 2

## Light technic

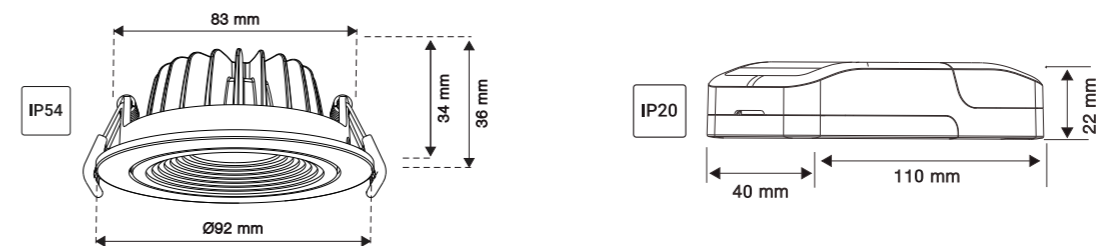


Art. no.	Output	CCT	Light source	Beam angle	Dimming
JP-9107	180mA, 36V	3000K	Cree/Luminans	14°/25°/36°	Triac/Dali 2
JP-9107CD	180mA, 36V	1800K-3000K	Luminans	14°/25°/36°	Triac/Dali 2

## Dimension (mm)



## Dimension (mm)





# BLADE FIX

Highly efficient luminaire with timeless design, suitable for most applications.  
Flexible through optional light control and various beam angles.

Toolless junction box with connection terminal block:  
3x2.5 mm (Leading-/Trailing Edge Dimmers)  
5x2.5 mm<sup>2</sup> (Dali).

Front cover and outer ring of die-cast aluminum.

Diffuser made of high precision injection using milky acrylic.  
Light distribution Extra radiant for larger coverage.

Insulation-proof Luminaire that can be installed directly against insulation material.

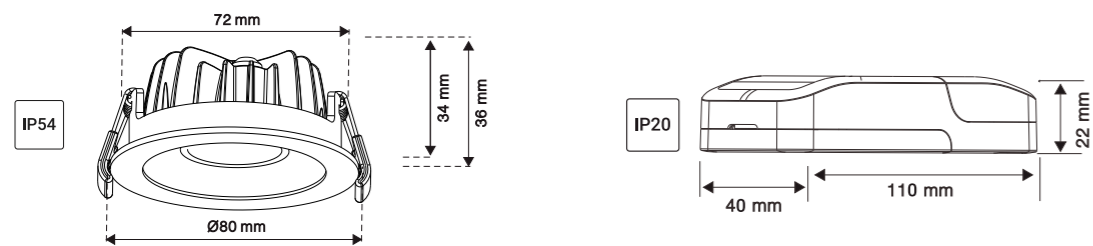


## Light technic



Art. no.	Output	CCT	Light source	Beam angle	Dimming
JP-9108	180mA, 36V	3000K	Cree/Luminans	14°/25°/36°	Triac/Dali 2
JP-9108CD	180mA, 36V	1800K-3000K	Luminans	14°/25°/36°	Triac/Dali 2

## Dimension (mm)



# BLADE

Highly efficient luminaire with timeless design, suitable for most applications.  
Flexible through optional light control and various beam angles.

Toolless junction box with connection terminal block:  
3x2.5 mm (Leading-/Trailing Edge Dimmers)  
5x2.5 mm<sup>2</sup> (Dali).

Front cover and outer ring of die-cast aluminum.

Diffuser made of high precision injection using milky acrylic.  
Light distribution Extra radiant for larger coverage.

Insulation-proof Luminaire that can be installed directly against insulation material.

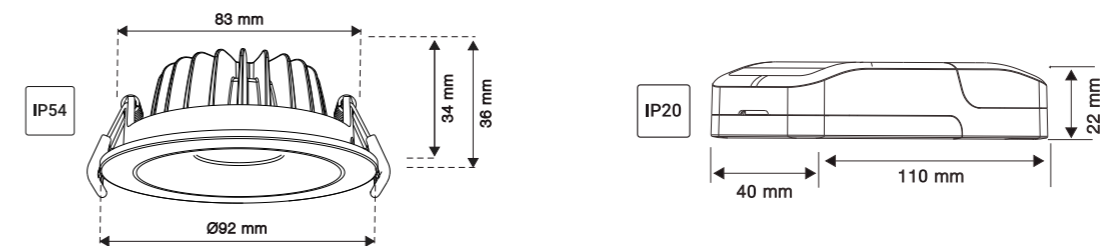


## Light technic



Art. no.	Output	CCT	Light source	Beam angle	Dimming
JP-9109	180mA, 36V	3000K	Cree/Luminans	14°/25°/36°	Triac/Dali 2
JP-9109CD	180mA, 36V	1800K-3000K	Luminans	14°/25°/36°	Triac/Dali 2

## Dimension (mm)



# CHESTER FIX

Highly efficient luminaire with timeless design, suitable for most applications. Flexible through optional light control and various beam angles.

Toolless junction box with connection terminal block: 3x2.5 mm (Leading-/Trailing Edge Dimmers) 5x2.5 mm<sup>2</sup> (Dali).

Front cover and outer ring of die-cast aluminum.

Diffuser made of high precision injection using milky acrylic. Light distribution Extra radiant for larger coverage.

Insulation-proof Luminaire that can be installed directly against insulation material.



# CHESTER

Highly efficient luminaire with timeless design, suitable for most applications. Flexible through optional light control and various beam angles.

Toolless junction box with connection terminal block: 3x2.5 mm (Leading-/Trailing Edge Dimmers) 5x2.5 mm<sup>2</sup> (Dali).

Front cover and outer ring of die-cast aluminum.

Diffuser made of high precision injection using milky acrylic. Light distribution Extra radiant for larger coverage.

Insulation-proof Luminaire that can be installed directly against insulation material.



## Light technic



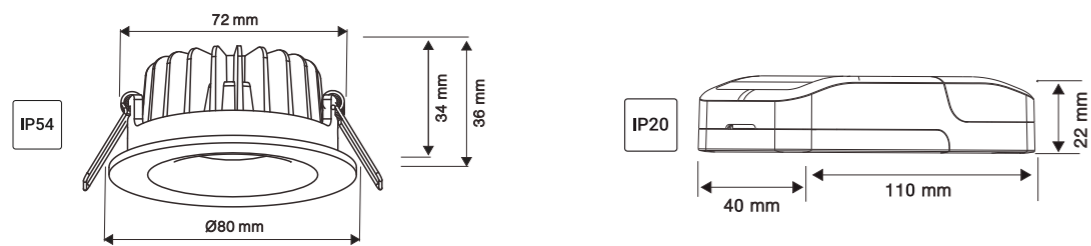
Art. no.	Output	CCT	Light source	Beam angle	Dimming
JP-9129	180mA, 36V	3000K	Cree/Luminans	14°/25°/36°	Triac/Dali 2
JP-9129CD	180mA, 36V	1800K-3000K	Luminans	14°/25°/36°	Triac/Dali 2

## Light technic

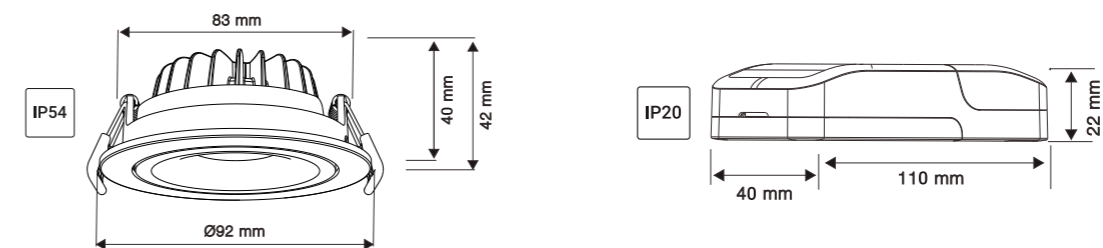


Art. no.	Output	CCT	Light source	Beam angle	Dimming
JP-9130	180mA, 36V	3000K	Cree/Luminans	14°/25°/36°	Triac/Dali 2
JP-9130CD	180mA, 36V	1800K-3000K	Luminans	14°/25°/36°	Triac/Dali 2

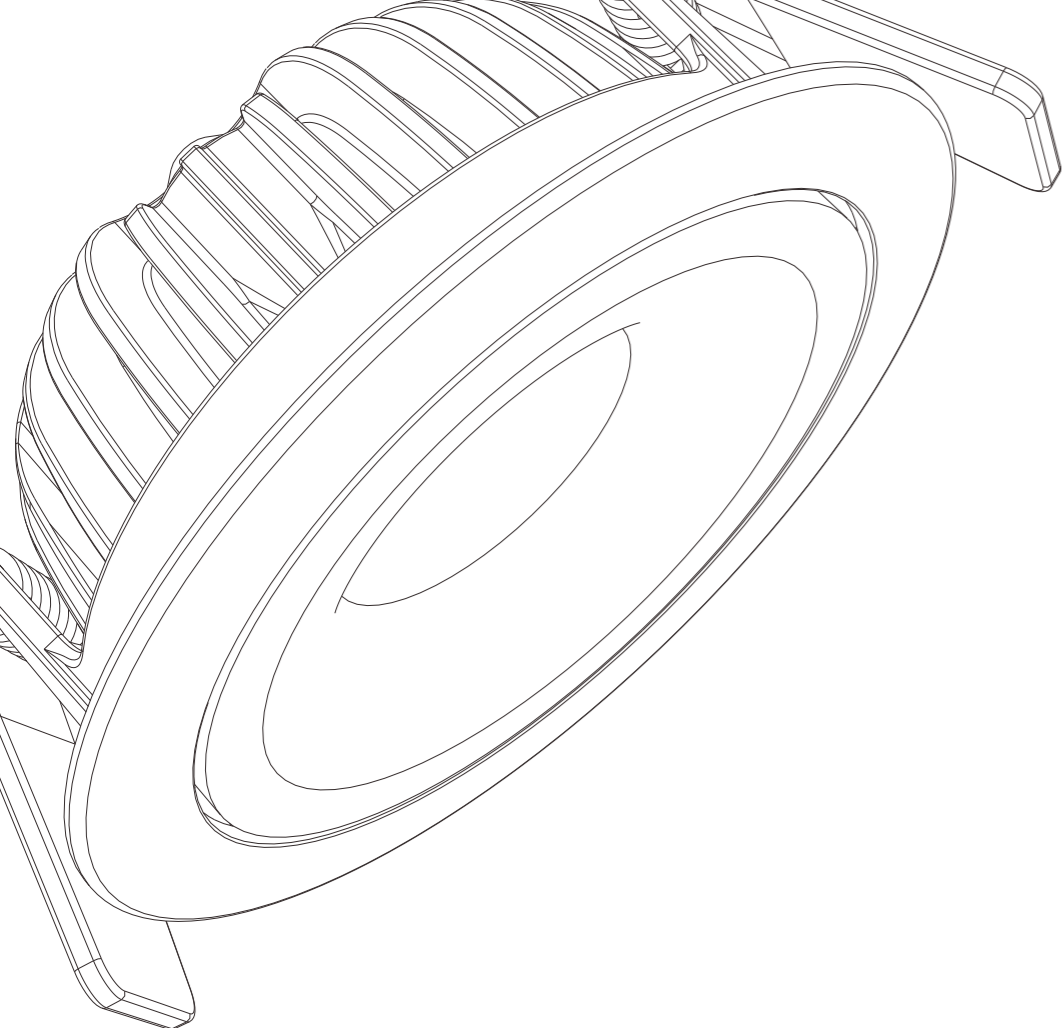
## Dimension (mm)



## Dimension (mm)







# KELVIN

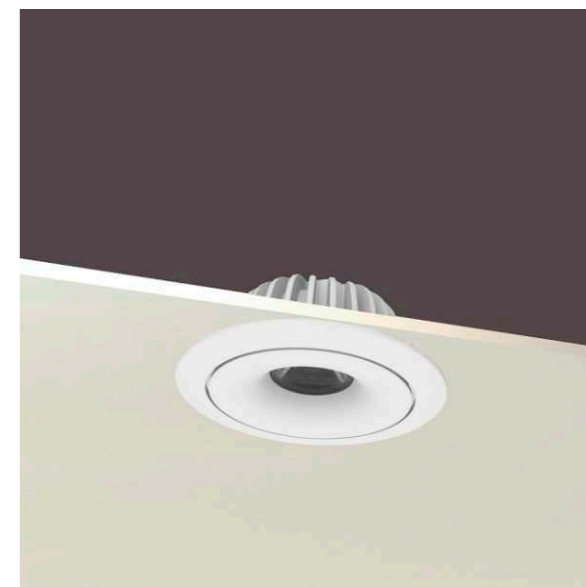
Highly efficient luminaire with timeless design, suitable for most applications. Flexible through optional light control and various beam angles.

Toolless junction box with connection terminal block:  
3x2.5 mm (Leading-/Trailing Edge Dimmers)  
5x2.5 mm<sup>2</sup> (Dali).

Front cover and outer ring of die-cast aluminum.

Lens made of high precision injection using clear acrylic. Light distribution Extra wide, wide and medium radiant.

Insulation-proof Luminaire that can be installed directly against insulation material.



## Kelvin



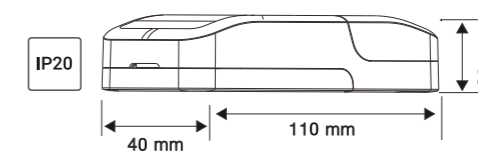
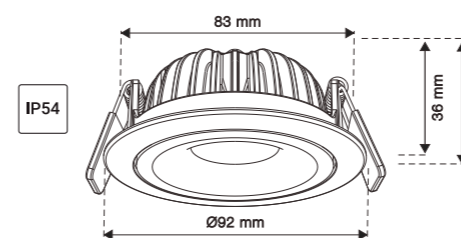
### Light technic



Art. no.	Output	CCT	Light source	Beam angle	Dimming
JP-9110	260mA, 36V	3000K	Cree/Luminans	36°	Triac/Dali 2
JP-9110CT	230mA, 36V	2700K&4000K	Luminans	40°	Triac/Dali DT8
JP-9112CD	260mA, 36V	1800K-3000K	Luminans	40°	Triac/Dali 2



### Dimension (mm)





# JOY

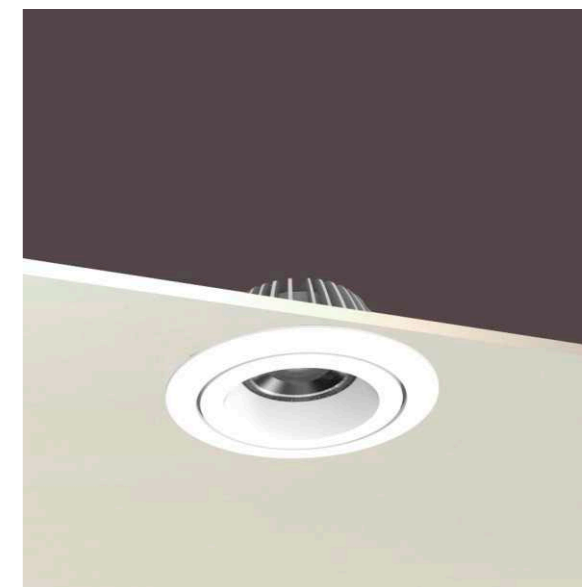
Highly efficient luminaire with timeless design, suitable for most applications. Flexible through optional light control and various beam angles.

Toolless junction box with connection terminal block:  
3x2.5 mm (Leading-/Trailing Edge Dimmers)  
5x2.5 mm<sup>2</sup> (Dali).

Front cover and outer ring of die-cast aluminum.

Lens made of high precision injection using clear acrylic. Light distribution Extra wide, wide and medium radiant.

Insulation-proof Luminaire that can be installed directly against insulation material.



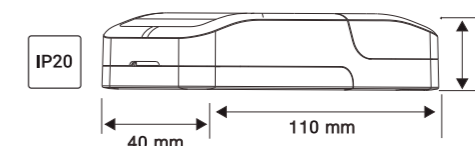
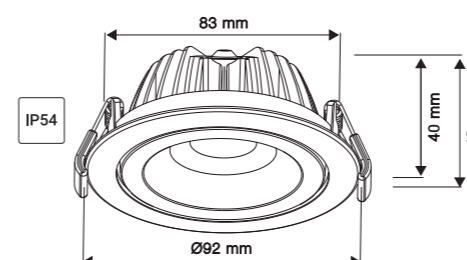
## Light technic



Art. no.	Output	CCT	Light source	Beam angle	Dimming
JP-9123	180mA, 36V	3000K	Luminans	36°	Triac/Dali 2
JP-9123CT	230mA, 36V	2700K&4000K	Luminans	40°	Triac/Dali DT8
JP-9123CD	260mA, 36V	1800K-3000K	Luminans	40°	Triac/Dali 2



## Dimension (mm)







# AURORA

Highly efficient luminaire with timeless design, suitable for most applications. Flexible through optional light control and various beam angles.

Toolless junction box with connection terminal block:  
3x2.5 mm (Leading-/Trailing Edge Dimmers)  
5x2.5 mm<sup>2</sup> (Dali).

Front cover and outer ring of die-cast aluminum.

Lens made of high precision injection using clear acrylic. Light distribution Extra wide, wide and medium radiant.

Insulation-proof Luminaire that can be installed directly against insulation material.



## Aurora



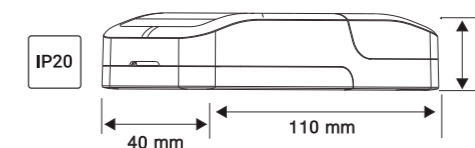
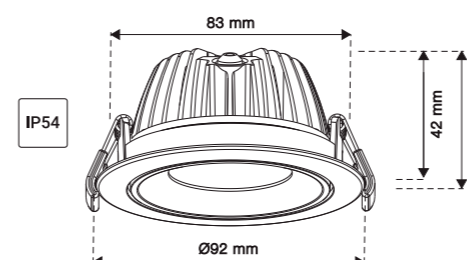
### Light technic



Art. no.	Output	CCT	Light source	Beam angle	Dimming
JP-9120	260mA, 36V	3000K	Luminus	36°	Triac/Dali 2
JP-9120CT	230mA, 36V	2700K&4000K	Luminans	38°	Triac/Dali DT8
JP-9120AD	230mA, 36V	1800K-4000K	Luminans	38°	Triac/Dali 2
JP-9120CD	260mA, 36V	1800K-3000K	Luminans	38°	Dali 2



### Dimension (mm)





# LANNA

Highly efficient luminaire with timeless design, suitable for most applications. Flexible through optional light control and various beam angles.

Toolless junction box with connection terminal block:  
 3x2.5 mm (Leading-/Trailing Edge Dimmers)  
 5x2.5 mm<sup>2</sup> (Dali).

Front cover and outer ring of die-cast aluminum.

Lens made of high precision injection using clear acrylic. Light distribution Extra wide, wide and medium radiant.

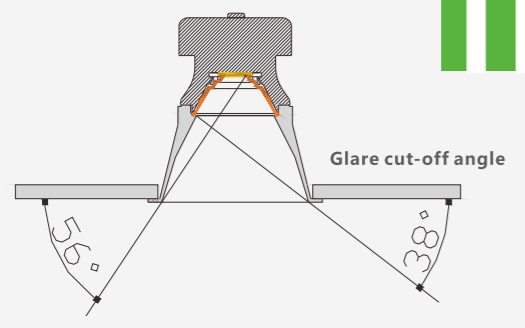
Insulation-proof Luminaire that can be installed directly against insulation material.



# LANNA



38 degree cut-off angle and concave LED module are used to be anti-glare and achieve uniform light

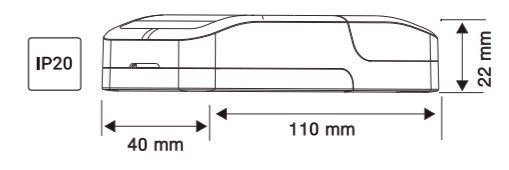
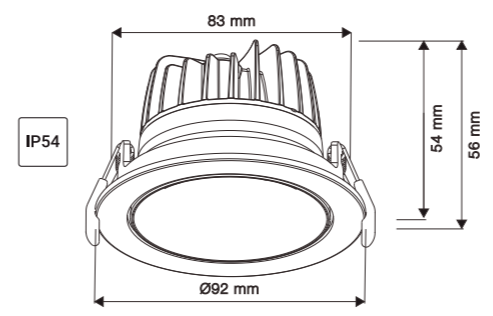


## Light technic



Art. no.	Output	CCT	Light source	Beam angle	Dimming
JP-9135	180mA, 36V	3000K	Cree/Luminans	14°/25°/36°	Triac/Dali 2
JP-9135CD	180mA, 36V	1800K-3000K	Luminans	14°/25°/36°	Triac/Dali 2

## Dimension (mm)







# KELVIN DOLD

Highly efficient luminaire with timeless design, suitable for most applications. Flexible through optional light control and various beam angles.

Toolless junction box with connection terminal block:  
3x2.5 mm (Leading-/Trailing Edge Dimmers)  
5x2.5 mm<sup>2</sup> (Dali).

Front cover and outer ring of die-cast aluminum.

Lens made of high precision injection using clear acrylic. Light distribution Extra wide, wide and medium radiant.

Insulation-proof Luminaire that can be installed directly against insulation material.



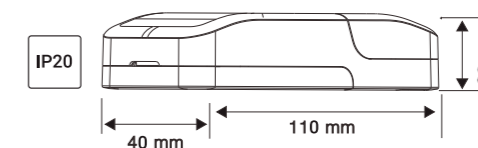
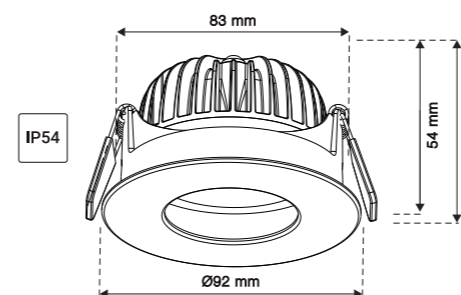
## Light technic

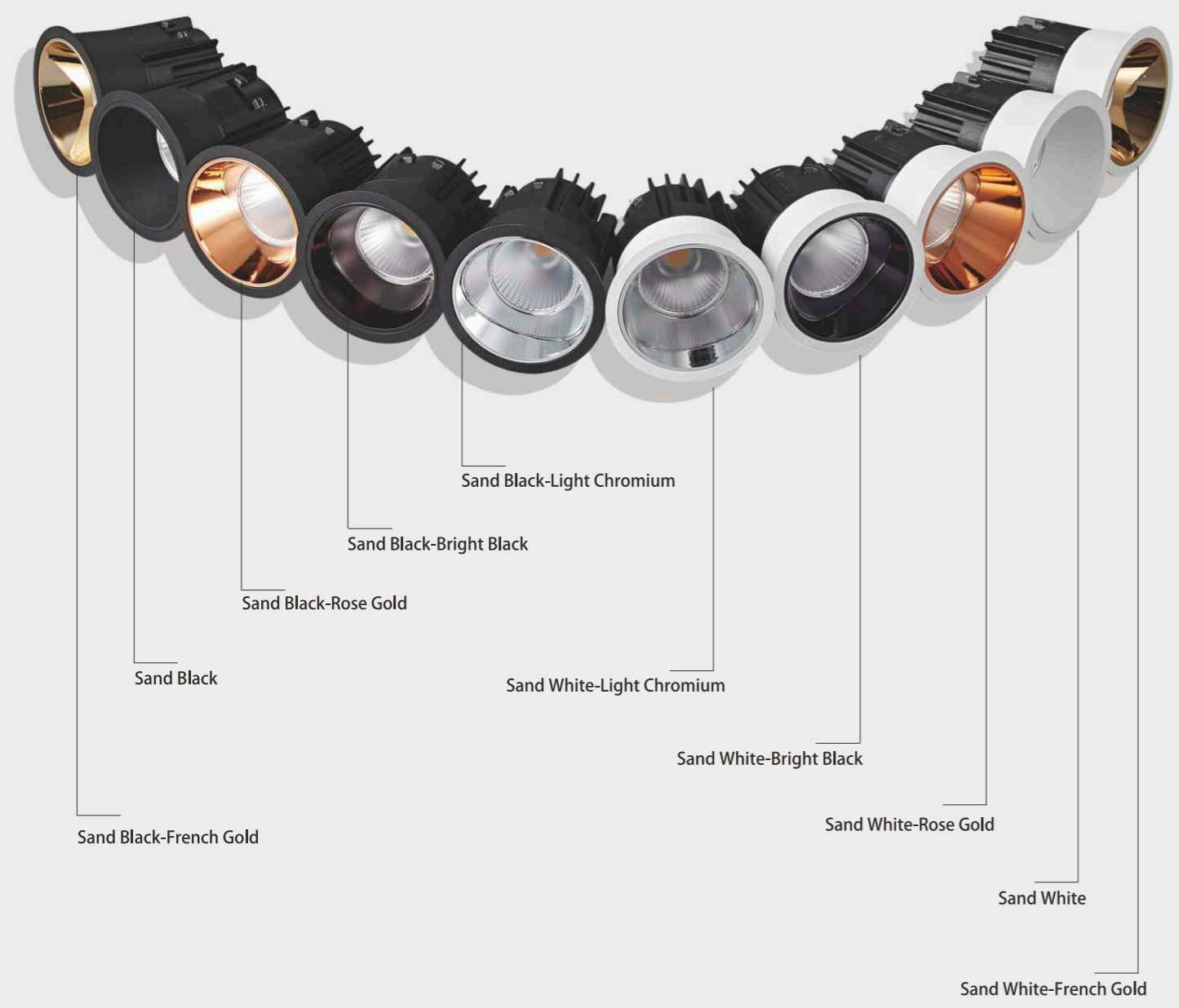


Art. no.	Output	CCT	Light source	Beam angle	Dimming
JP-9118	260mA, 36V	3000K	Cree/Luminans	25°	Triac/Dali 2
JP-9118CT	230mA, 36V	2700K&4000K	Luminans	25°	Triac/Dali DT8
JP-9118CD	260mA, 36V	1800K-3000K	Luminans	25°	Triac/Dali 2



## Dimension (mm)





# NORD

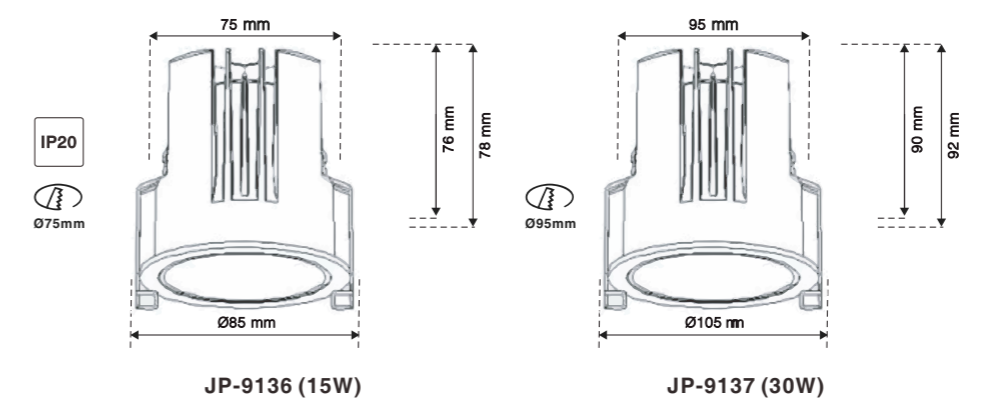


## Light technic

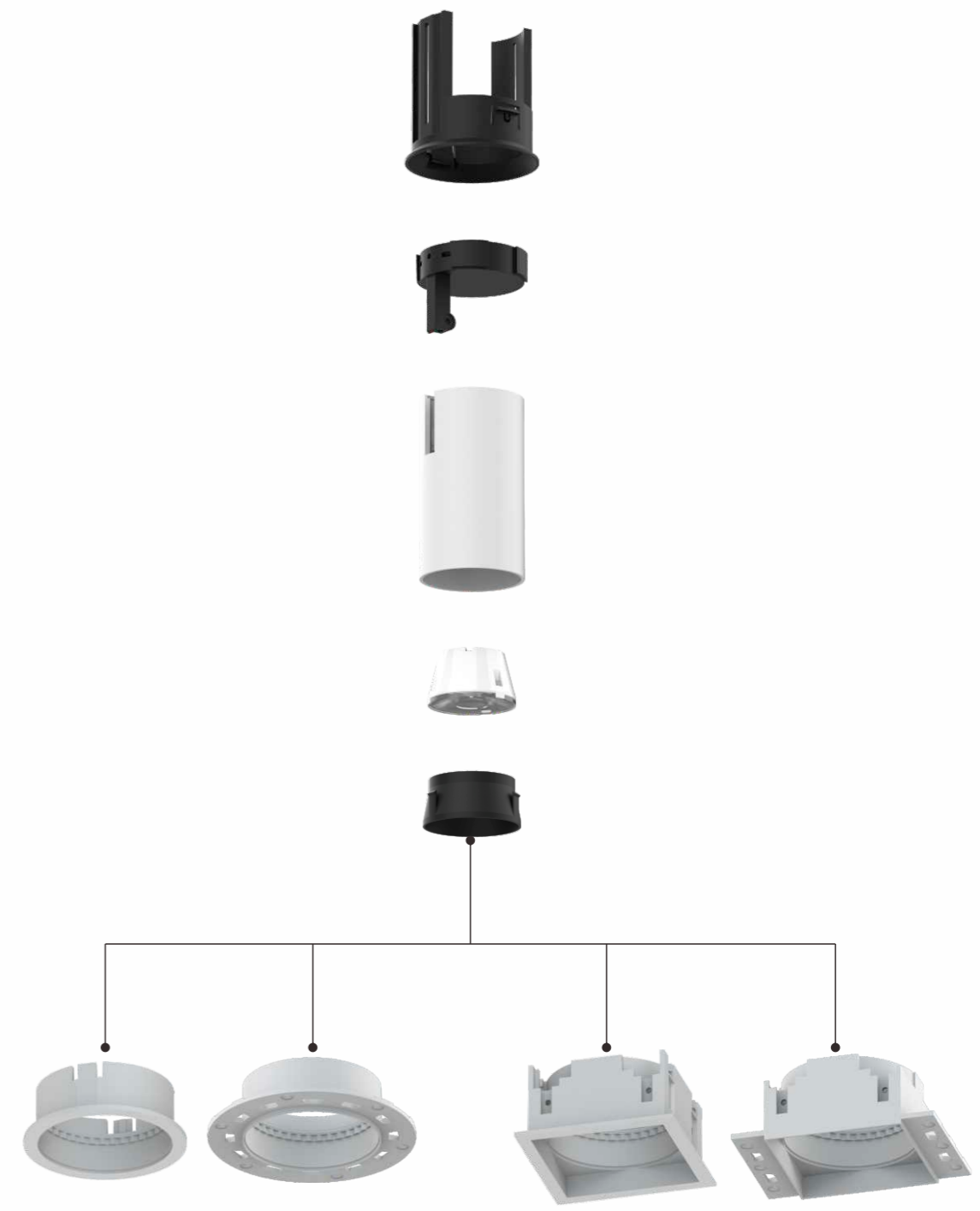
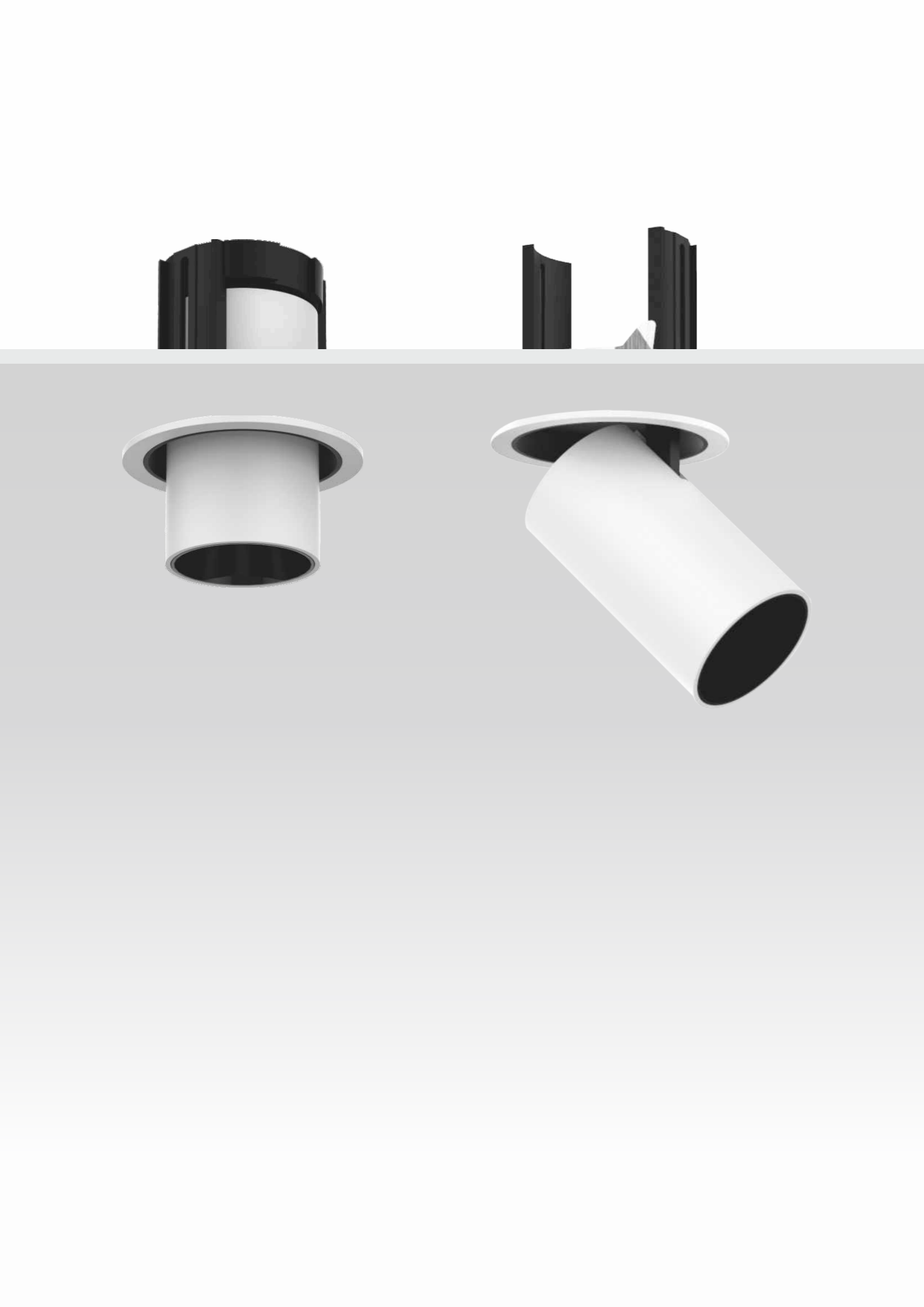


Art. no.	Output	CCT	Light source	Beam angle	Dimming
JP-9136	350mA, 36V	3000K	Cree/Luminus	14°, 25°, 36°	Triac/Dali 2
JP-9137	700mA, 36V	3000K	Cree/Luminus	14°, 25°, 36°	Triac/Dali DT8

## Dimension (mm)







**LUNA**



# LUNA PUL

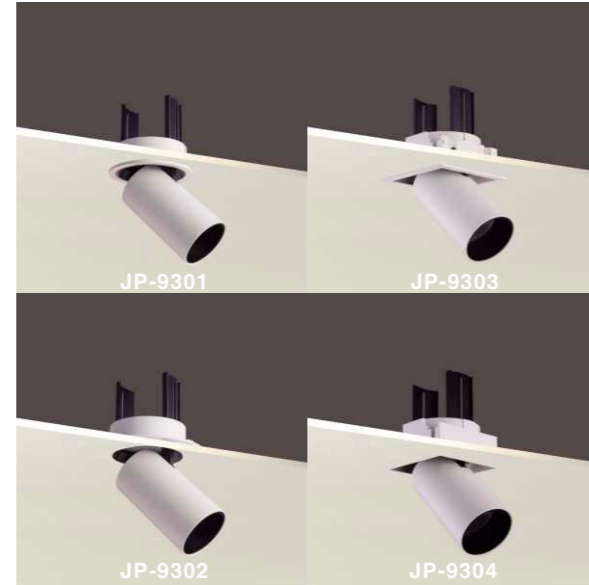
Highly efficient luminaire with timeless design, suitable for most applications.  
Flexible through optional light control and various beam angles.

Toolless junction box with connection terminal block:  
3x2.5 mm (Leading-/Trailing Edge Dimmers)  
5x2.5 mm<sup>2</sup> (Dali).

Front cover and outer ring of die-cast aluminum.

Diffuser made of high precision injection using milky acrylic.  
Light distribution Extra radiant for larger coverage.

Insulation-proof Luminaire that can be installed directly against insulation material.

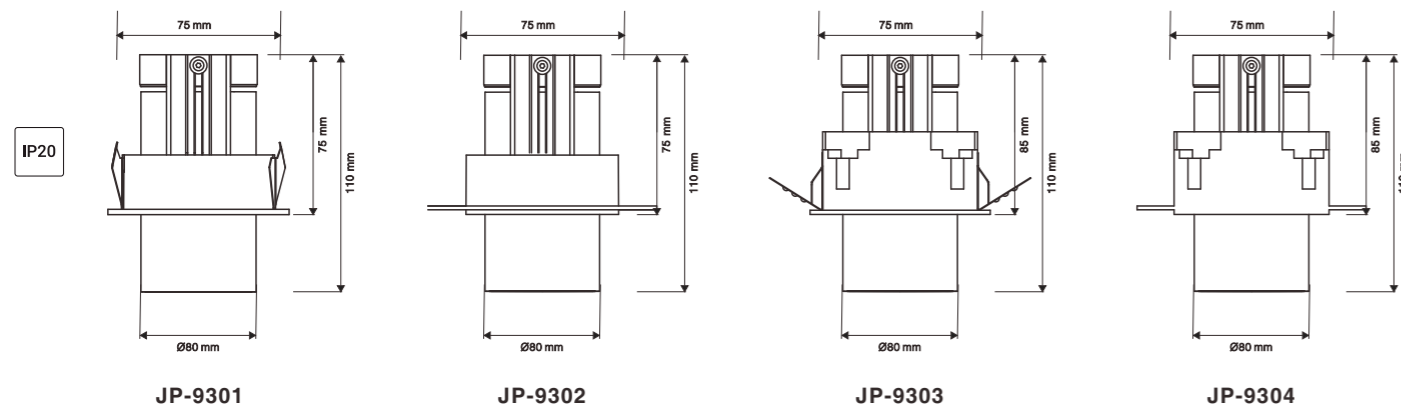


## Light technic



Art. no.	Output	CCT	Light source	Beam angle	Dimming
JP-9301	260mA, 36V	3000K	Citizen	10°/14°/25°/36°	Triac/Dali 2
JP-9302	260mA, 36V	3000K	Citizen	10°/14°/25°/36°	Triac/Dali 2
JP-9303	260mA, 36V	3000K	Citizen	10°/14°/25°/36°	Triac/Dali 2
JP-9304	260mA, 36V	3000K	Citizen	10°/14°/25°/36°	Triac/Dali 2

## Dimension (mm)



Accessory



# LUNA

Highly efficient luminaire with timeless design, suitable for most applications.  
Flexible through optional light control and various beam angles.

Toolless junction box with connection terminal block:  
3x2.5 mm (Leading-/Trailing Edge Dimmers)  
5x2.5 mm<sup>2</sup> (Dali).

Front cover and outer ring of die-cast aluminum.

Diffuser made of high precision injection using milky acrylic.  
Light distribution Extra radiant for larger coverage.

Insulation-proof Luminaire that can be installed directly against insulation material.

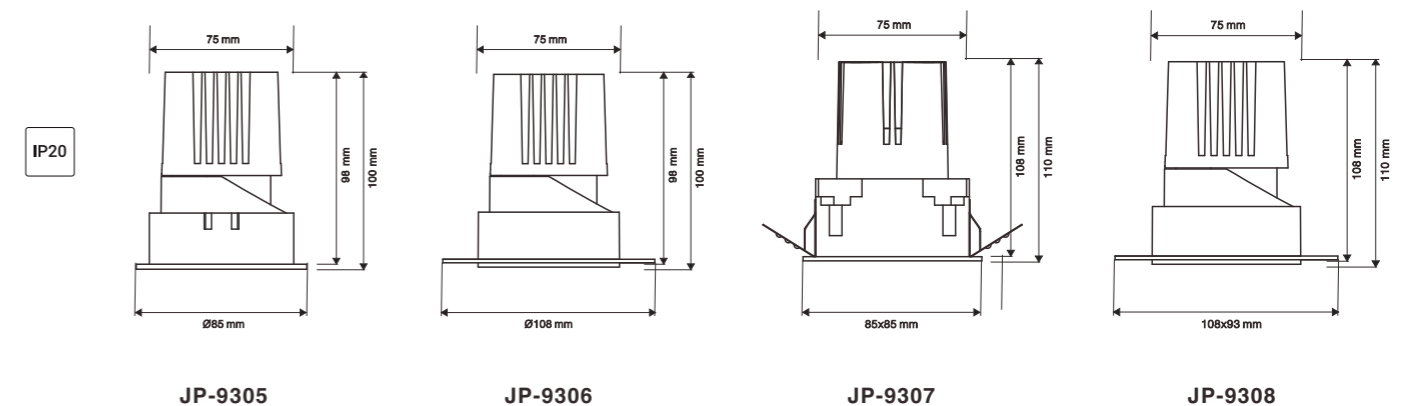


## Light technic

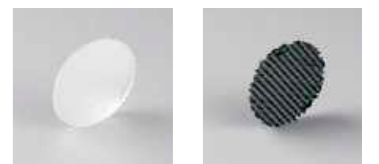


Art. no.	Output	CCT	Light source	Beam angle	Dimming
JP-9305	260mA, 36V	3000K	Citizen	10°/14°/25°/36°	Triac/Dali 2
JP-9306	260mA, 36V	3000K	Citizen	10°/14°/25°/36°	Triac/Dali 2
JP-9307	260mA, 36V	3000K	Citizen	10°/14°/25°/36°	Triac/Dali 2
JP-9308	260mA, 36V	3000K	Citizen	10°/14°/25°/36°	Triac/Dali 2

## Dimension (mm)



Accessory



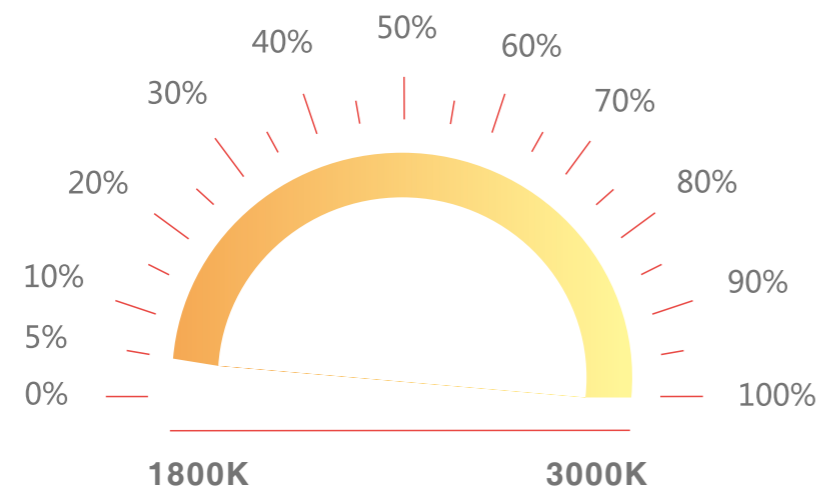


# WarmDim Solution

**Dim the color temperature and increase its scope When choosing WarmDim function**

When you dim down the luminaire which is also adjusted the color temperature. WarmDim creates a sense of true halogen light with a fantastic color rendering.





WarmDim function with triac dimming range of 0.1% to 100% with flicker free driver which is compliant with UL IEEE 1789. Lower than 30% would be mimic to halogen light atmosphere.

**1800K**  
5%

**3000K**  
100%





## LILLY

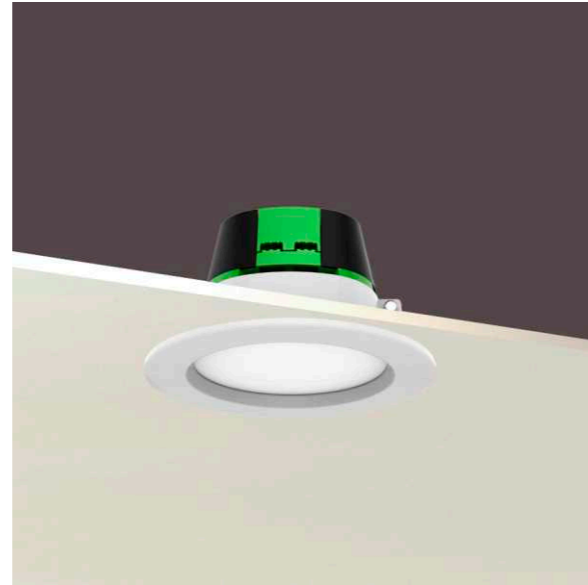
Highly efficient luminaire with timeless design, suitable for most applications.

Selectable CCT or WarmDim enable to meet different demands for different applications.

Lamp body with Germany BASF and casing with BAYER.

Diffuser made of high precision injection using milky acrylic. Light distribution Extra wide radiant for larger coverage.

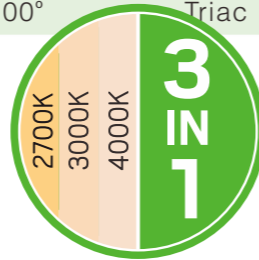
Insulation-proof luminaire that can be installed directly against insulation material.



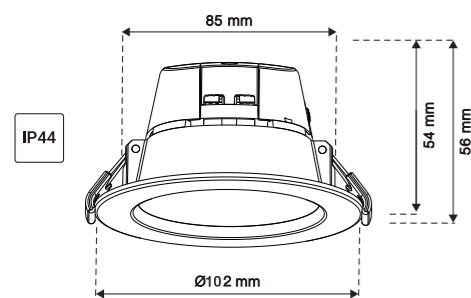
## Light technic



Art. no.	Output	CCT	Light source	Beam angle	Dimming
JP-6111CT	120mA, 70V	2700K/3000K/4000K	Luminans	100°	Triac
JP-6111CD	120mA, 70V	1800K-3000K	Luminans	100°	Triac



## Dimension (mm)



IP44

## LILLY 2

Highly efficient luminaire with timeless design, suitable for most applications.

Selectable CCT or WarmDim enable to meet different demands for different applications.

Toolless junction box with connection terminal block:  
3x2.5 mm (Leading-/Trailing Edge Dimmers)  
5x2.5 mm<sup>2</sup> (Dali).

The whole luminaire of die-cast aluminum.

Diffuser made of high precision injection using milky acrylic. Light distribution Extra radiant for larger coverage.

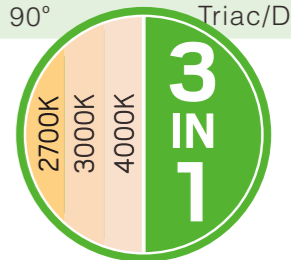
Insulation-proof luminaire that can be installed directly against insulation material.



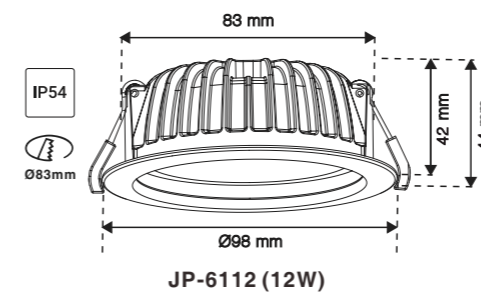
## Light technic



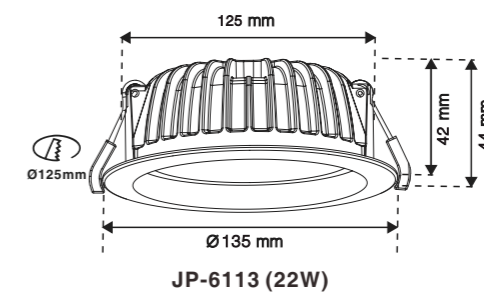
Art. no.	Output	CCT	Light source	Beam angle	Dimming
JP-6112	260mA, 36V	3000K	Luminans	90°	Triac/Dali 2
JP-6112CT	230mA, 36V	2700K/3000K/4000K	Luminans	90°	Triac
JP-6112CD	260mA, 36V	1800K-3000K	Luminans	90°	Triac/Dali 2
JP-6113	500mA, 36V	3000K	Luminans	90°	Triac/Dali 2



## Dimension (mm)

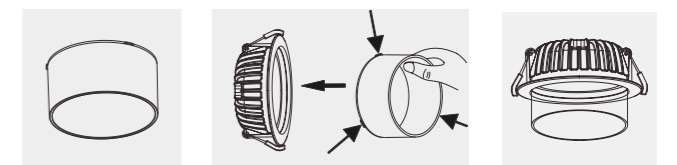


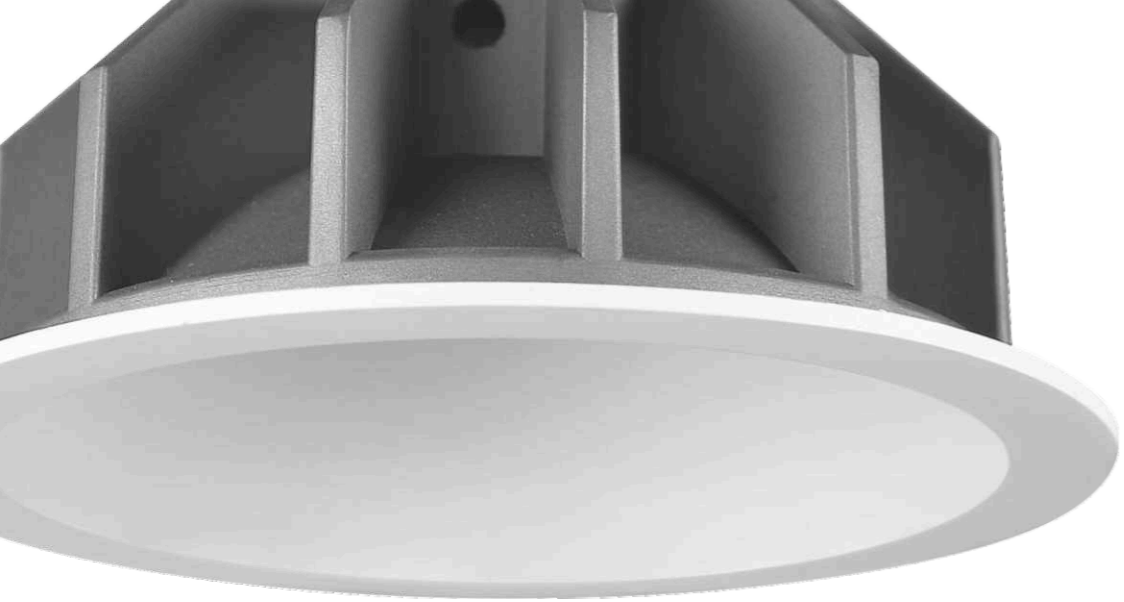
JP-6112 (12W)



JP-6113 (22W)

Accessory





# SHARP

Highly efficient luminaire with timeless design, suitable for most applications. Flexible through optional light control and various beam angles.

Toolless junction box with connection terminal block:  
 3x2.5 mm (Leading-/Trailing Edge Dimmers)  
 5x2.5 mm<sup>2</sup> (Dali).

Front cover and outer ring of die-cast aluminum.

Lens made of high precision injection using clear acrylic. Light distribution Extra wide, wide and medium radiant.

Insulation-proof Luminaire that can be installed directly against insulation material.

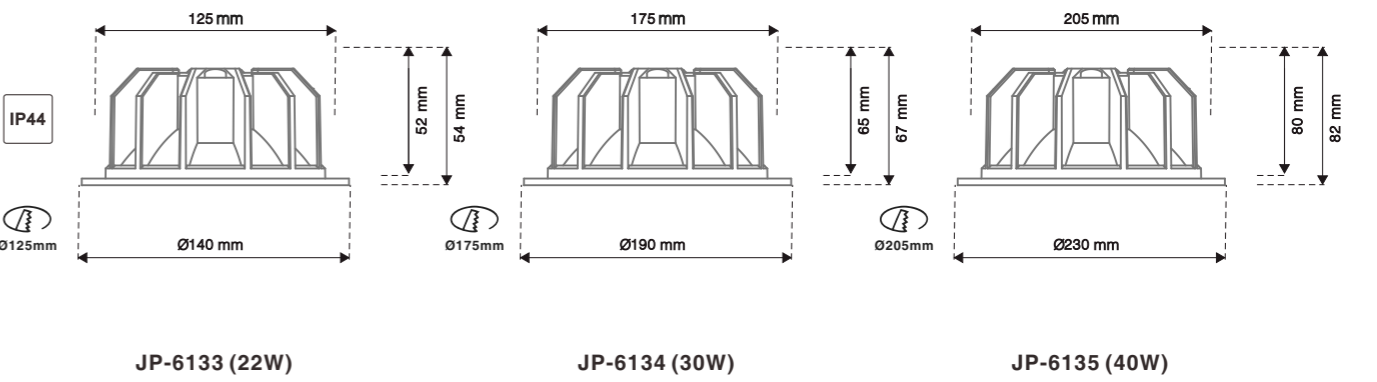


## Light technic



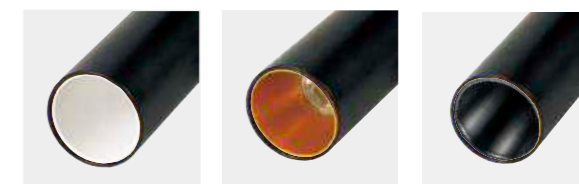
Art. no.	Output	CCT	Light source	Beam angle	Dimming
JP-6133	500mA, 36V	3000K	Luminus	25°, 36°, 60°	Triac/Dali 2
JP-6134	700mA, 36V	3000K	Luminus	25°, 36°, 60°	Triac/Dali 2
JP-6135	950mA, 36V	3000K	Luminus	25°, 36°, 60°	Triac/Dali 2

## Dimension (mm)





**Core**







# CORE

Track rail system spotlight with integrated powerful LED chip and driver.

The luminaire is made of powder-coated aluminum, flexible and can be adjusted in almost any direction, making it an obvious choice for all places where any spotlight or effect light is to be used.

Dimmable with phase cut dimmer.

Perfect color rendering using extra high Ra value as well as SDCM 2.

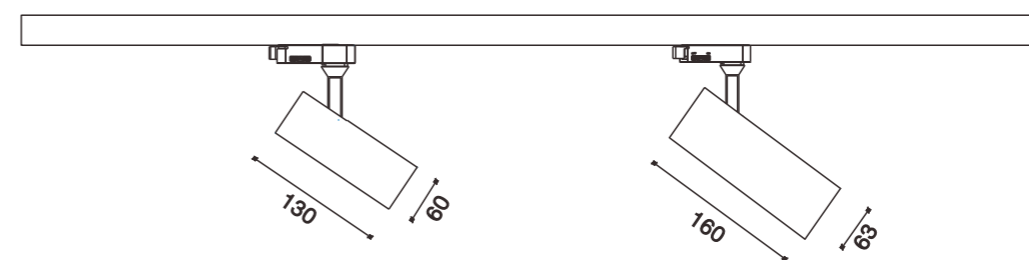


## Light technic



Art. no.	Output	CCT	Light source	Beam angle	Dimming
JP-1028	260mA, 36V	3000K	Cree	14°/25°/36°	Triac
JP-1029	500mA, 36V	3000K	Cree	14°/25°/36°	Triac

## Dimension (mm)



JP-1028 (12W)

JP-1029 (22W)

### Accessory



# CORE SURF

Surface mounted spotlight with integrated powerful LED chip and driver.

The luminaire is made of powder-coated aluminum, flexible and can be adjusted in almost any direction, making it an obvious choice for all places where any spotlight or effect light is to be used.

Dimmable with phase cut dimmer.

Perfect color rendering using extra high Ra value as well as SDCM 2.

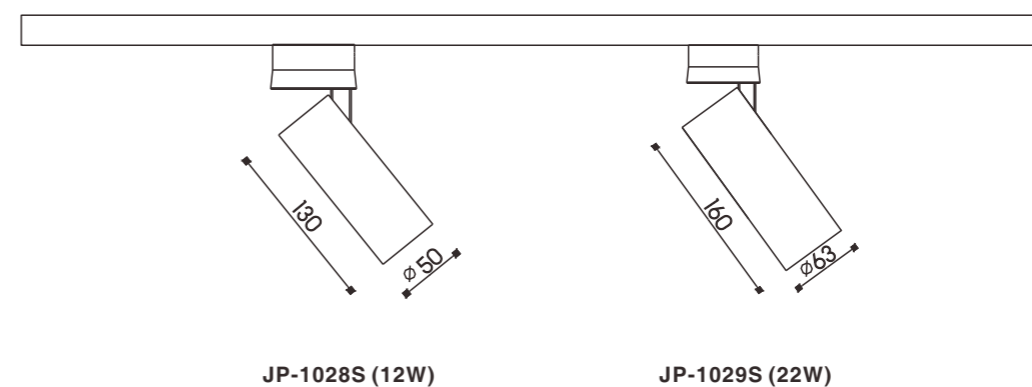


## Light technic



Art. no.	Output	CCT	Light source	Beam angle	Dimming
JP-1028S	260mA, 36V	3000K	Cree	14°/25°/36°	Triac
JP-1029S	500mA, 36V	3000K	Cree	14°/25°/36°	Triac

## Dimension (mm)



### Accessory



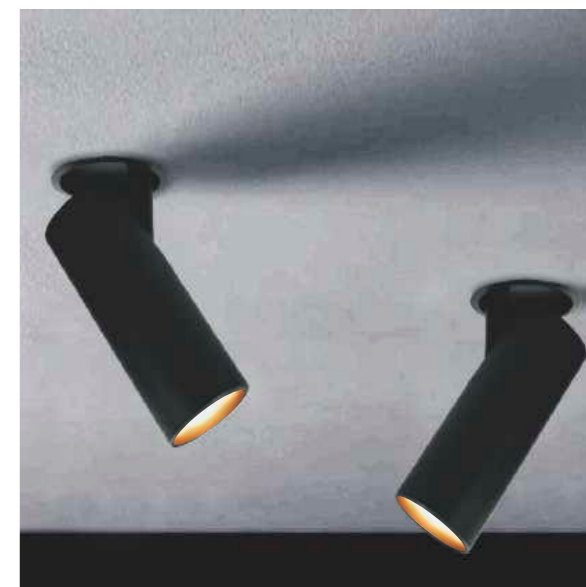
# CORE RECES

Recessed spotlight with integrated powerful LED chip and driver.

The luminaire is made of powder-coated aluminum, flexible and can be adjusted in almost any direction, making it an obvious choice for all places where any spotlight or effect light is to be used.

Dimmable with phase cut dimmer.

Perfect color rendering using extra high Ra value as well as SDCM 2.

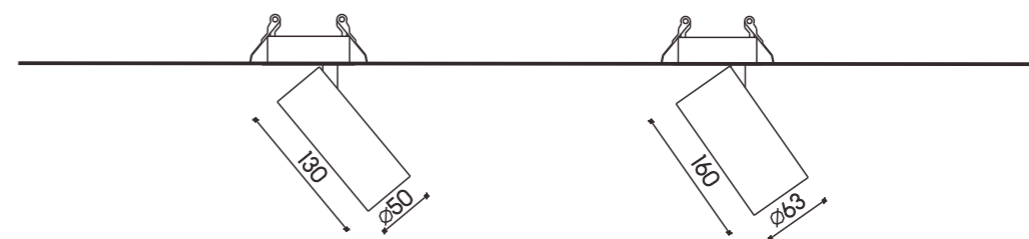


## Light technic



Art. no.	Output	CCT	Light source	Beam angle	Dimming
JP-1028R	260mA, 36V	3000K	Cree	14°/25°/36°	Triac
JP-1029R	500mA, 36V	3000K	Cree	14°/25°/36°	Triac

## Dimension (mm)



JP-1028R (12W)

JP-1029R (22W)

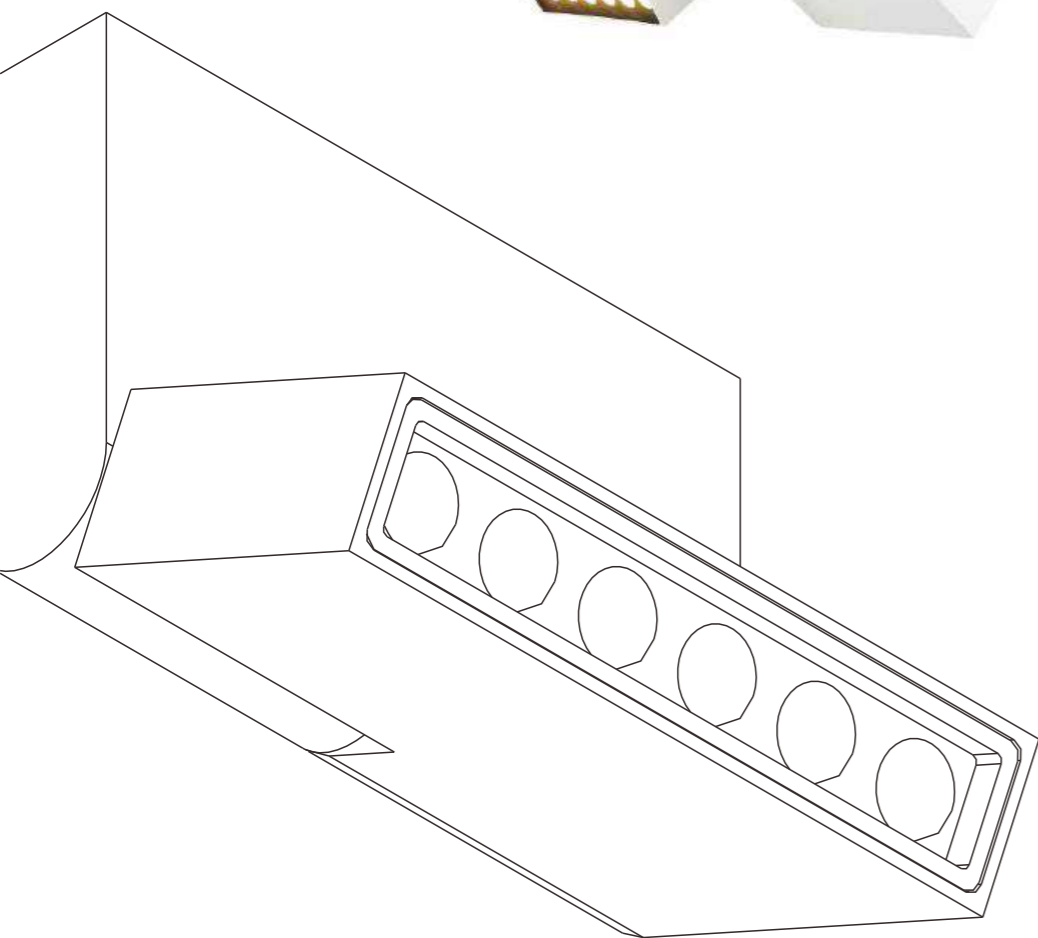
### Accessory







**STREAM**



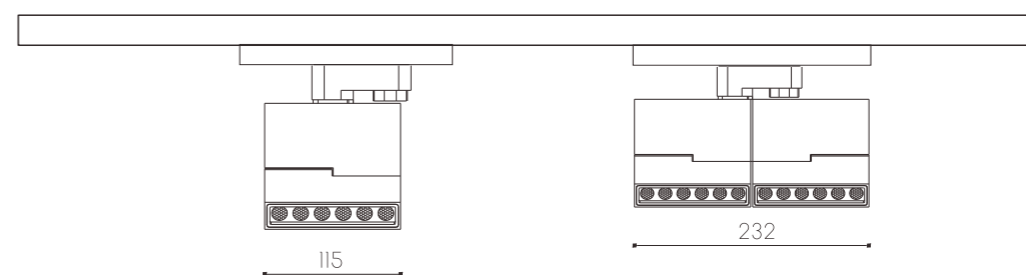
# STREAM

## Light technic



Art. no.	Output	CCT	Light source	Beam angle	Dimming
JP-1030	700mA, 9V	3000K	Cree	14°/25°/36°	Triac
JP-1031	1400mA, 9V	3000K	Cree	14°/25°/36°	Triac

## Dimension (mm)



JP-1030 (8W)

JP-1031 (2\*8W)



**GISELA**







# GISELA

Modern design luminaire that can be mounted on the wall both indoors and outdoors.

Compatible with standard 60mm opening junction box with complete driver kit inside for waterproof. Also this luminaire can be installed directly into the wooden wall.

The luminaire is made of die-cast aluminum, powder-coated white or black.

Easy mounting with quick-release terminals, two inputs / outputs for cables, with the possibility of both hidden and visible cabling.



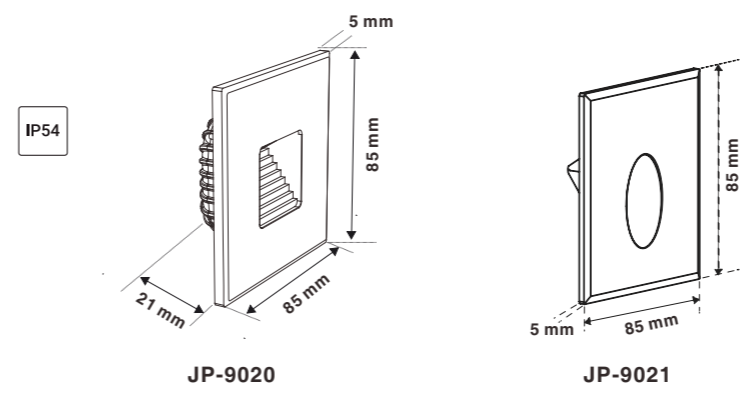
## Light technic



Art. no.	Output	CCT	Light source	Beam angle	Dimming
JP-9020	350mA, 6V	3000K	Cree	Asymmetrical	Triac
JP-9021	350mA, 6V	3000K	Cree	Asymmetrical	Triac
JP-9020CT	350mA, 6V	2700K&3000K	Cree	Asymmetrical	Triac
JP-9021CT	350mA, 6V	2700K&3000K	Cree	Asymmetrical	Triac



## Dimension (mm)





# SOLO

Modern design luminaire that can be mounted on the wall both indoors and outdoors.

The luminaire is made of die-cast aluminum, powder-coated white or graphite.

Easy mounting with quick-release terminals, two inputs / outputs for cables, with the possibility of both hidden and visible cabling.

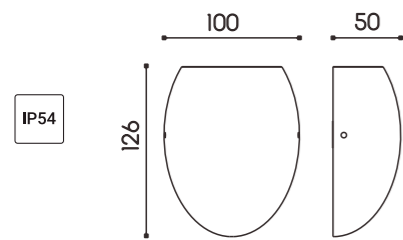


## Light technic



Art. no.	Output	CCT	Light source	Beam angle	Dimming
JP-1323	350mA, 9V	3000K	Cree	90°	Triac

## Dimension (mm)



# DUO

Modern design luminaire that can be mounted on the wall both indoors and outdoors.

The luminaire is made of die-cast aluminum, powder-coated white or graphite.

Easy mounting with quick-release terminals, two inputs / outputs for cables, with the possibility of both hidden and visible cabling.

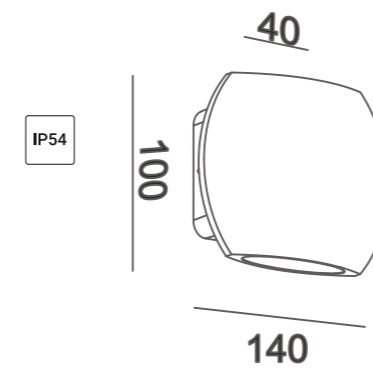


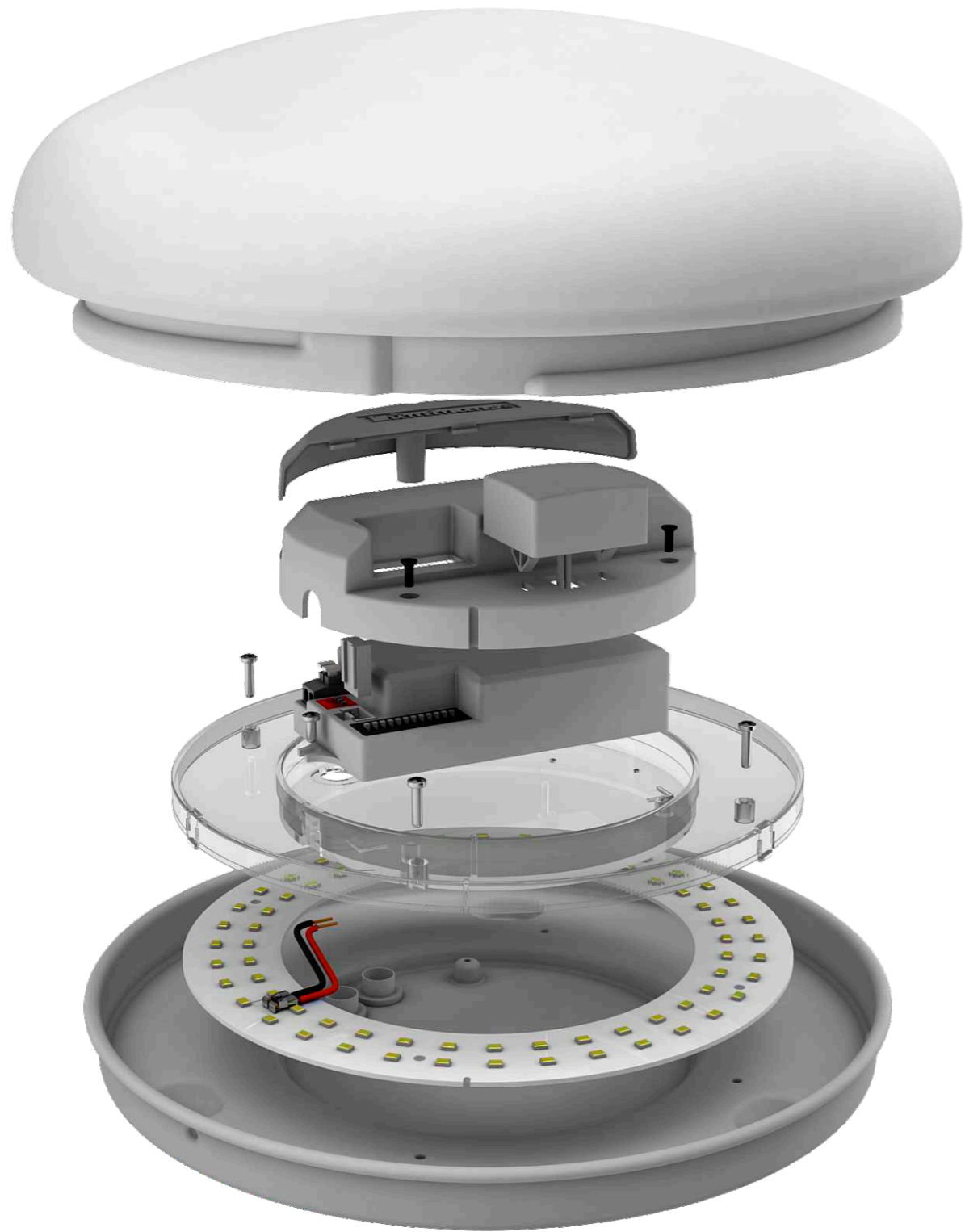
## Light technic



Art. no.	Output	CCT	Light source	Beam angle	Dimming
JP-1325	700mA, 9V	3000K	Cree	60°	Triac

## Dimension (mm)





**THOR**







# THOR

Energy efficient Surface mounted LED luminaires with a slim profile that gives a modern look.

Toolless connection terminal block for both side entry and cutout connection in middle.

The luminaire is made of powder coated aluminum in matte black or white.

Available for both modern flat and traditional plafond diffuser provides almost glare-free light.

Come with on/off, phase cut or microwave.

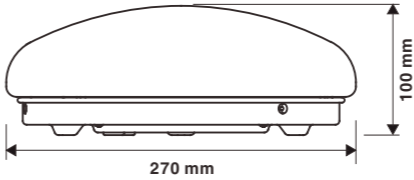


## Light technic



Art. no.	Output	CCT	Light source	Beam angle	Dimming
JP-2200	350mA, 36V	3000K	Osram	220°	
JP-2200	500mA, 36V	3000K	Osram	220°	
JP-2201	350-700mA, 36V	3000K	Osram	220°	Microwave
JP-2202	350-700mA, 36V	3000K	Osram	220°	Microwave

## Dimension (mm)



Accessory







# MOON AC

Energy efficient Surface mounted LED luminaires with a slim profile that gives a modern look.

Toolless connection terminal block for both side entry and cutout connection in middle.

The luminaire is made of powder coated aluminum in matte black or white.

Available for both modern flat and traditional plafond diffuser provides almost glare-free light.

Come with on/off, phase cut, microwave or master/slave.

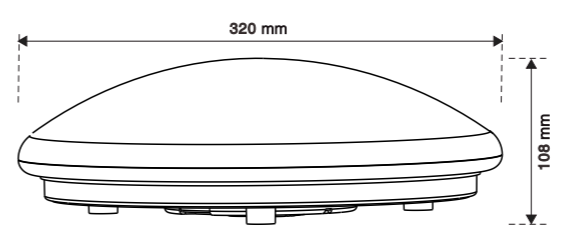


## Light technic

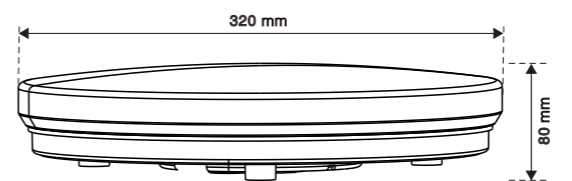


Art. no.	Output	CCT	Light source	Beam angle	Dimming
JP-2211	18W	3000K&4000K	Osram	220°	
JP-2212	18W	3000K&4000K	Osram	220°	
JP-2213	18W	3000K&4000K	Osram	220°	Microwave
JP-2214	18W	3000K&4000K	Osram	220°	Microwave

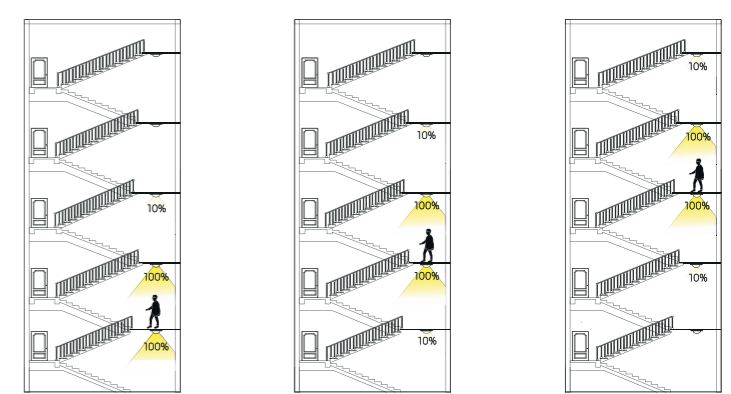
## Dimension (mm)



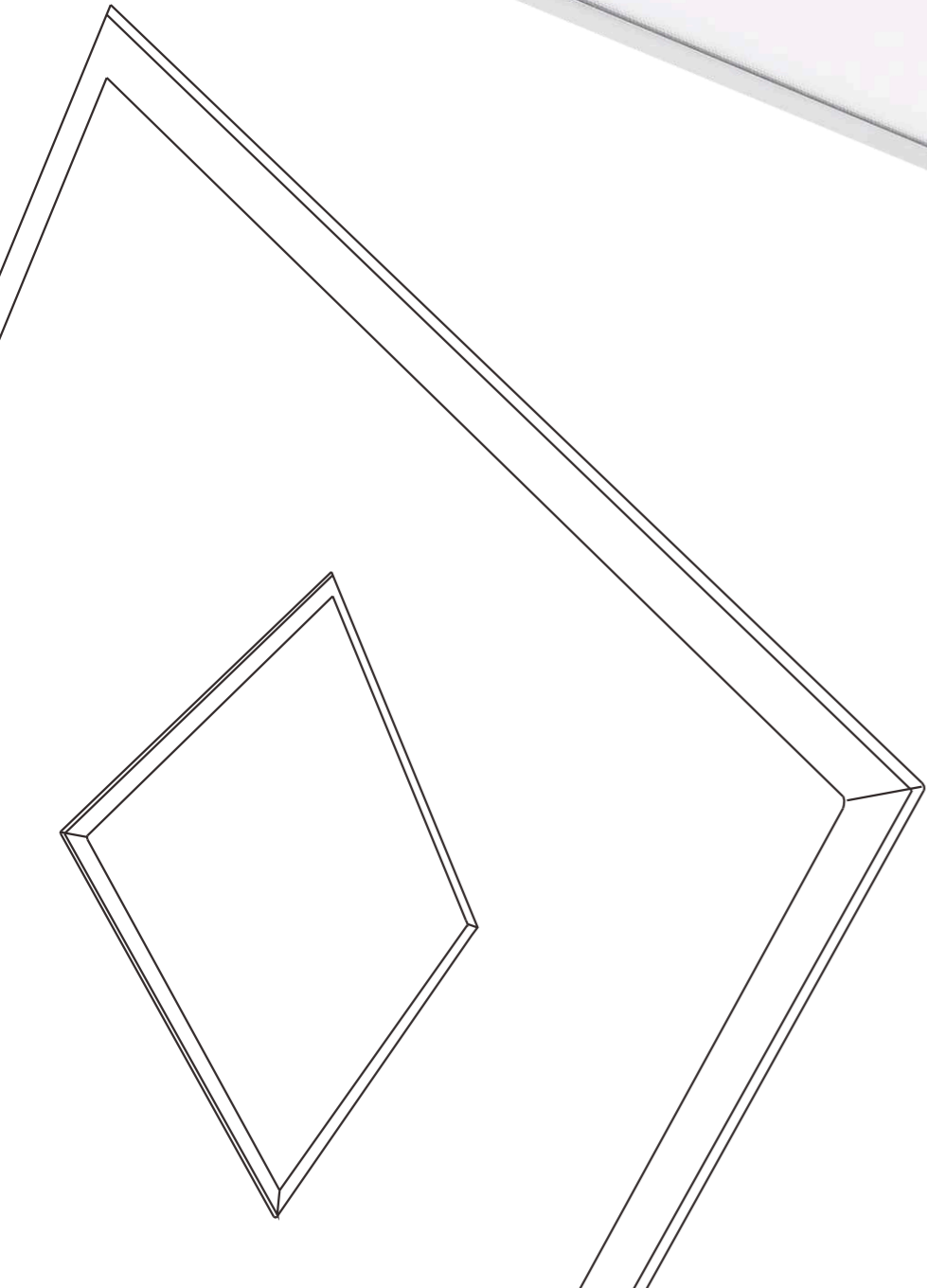
JP-2211/JP-2213



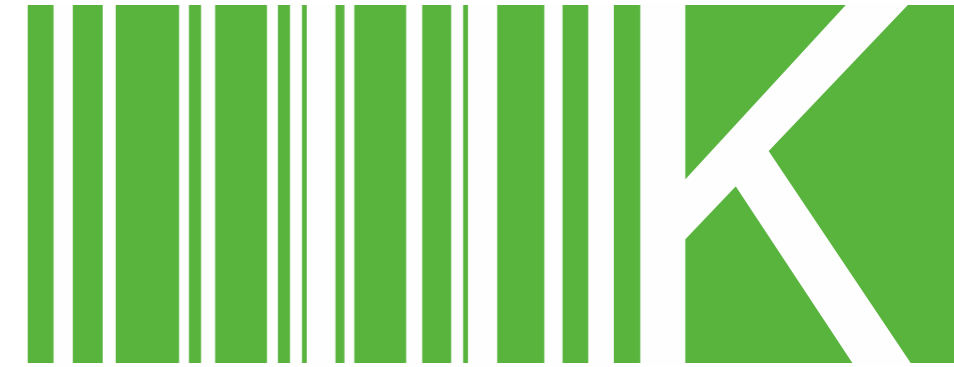
JP-2212/JP-2214



Master/Slave function



**KVEQ**







# KVEQ

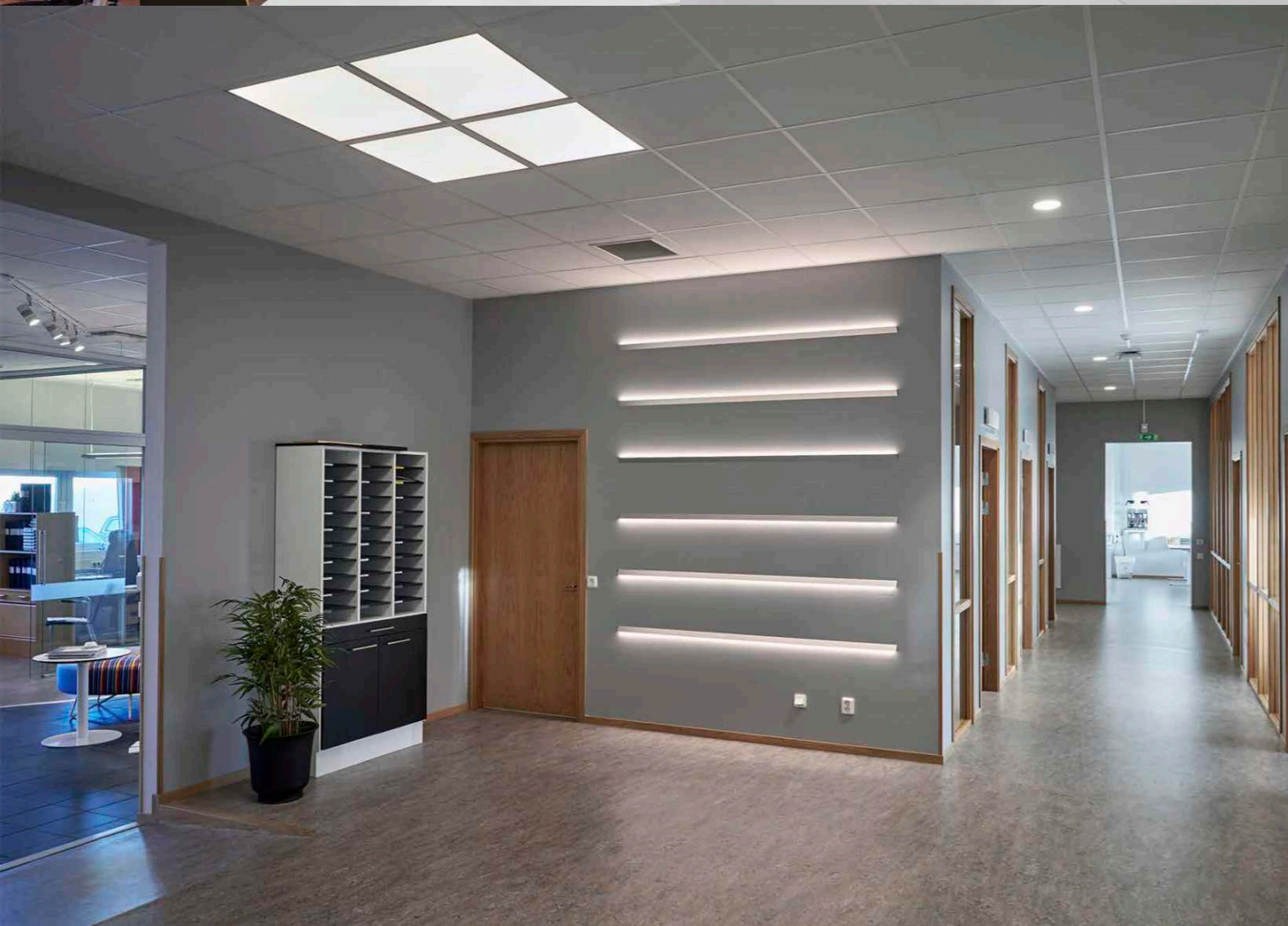
Energy efficient LED luminaires with a slim profile that gives a modern look. Can be mounted in ceilings with visible T-rails without accessories and in ceilings with hidden T-rails with accessories.

Toolless junction box with connection terminal block:  
3x2.5 mm (Leading-/Trailing Edge Dimmers)  
5x2.5 mm<sup>2</sup> (Dali).

The luminaire is made of powder coated aluminum in matte black or white.

Available for both opal or micro-prismatic diffuser provides almost glare-free light.

Come with on/off, phase cut, 0-10V or DALI.



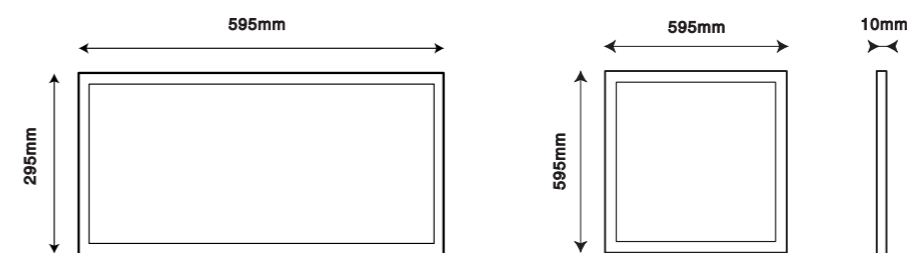
## Light technic



Art. no.	Output	CCT	Light source	Beam angle	Dimming
JP-PL2240	950mA, 36V	3000K	Samsung	110°	
JP-PL2240R	950mA, 36V	3000K	Samsung	90°	UGR<17
JP-PL2240D	350-1050mA, 36V	3000K	Samsung	110°	Dali
JP-PL2240RD	350-1050mA, 36V	3000K&4000K	Samsung	90°	UGR<17 Dali



## Dimension (mm)



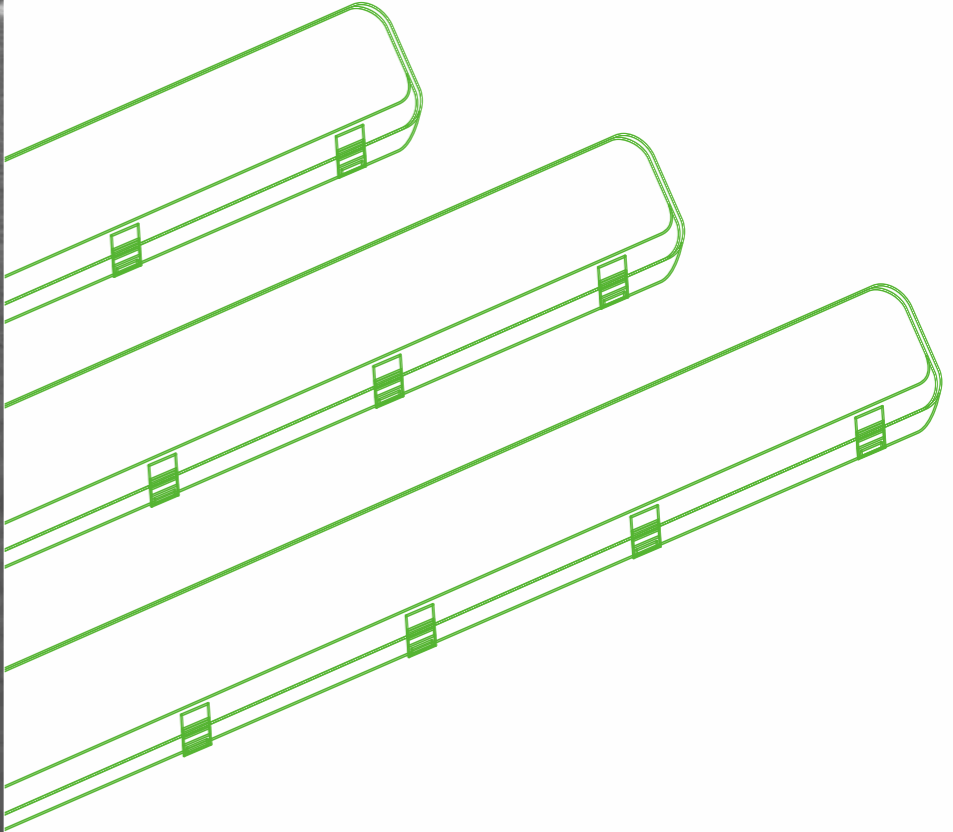
JP-PL1440

JP-PL2240





**LOK**





# LOKI

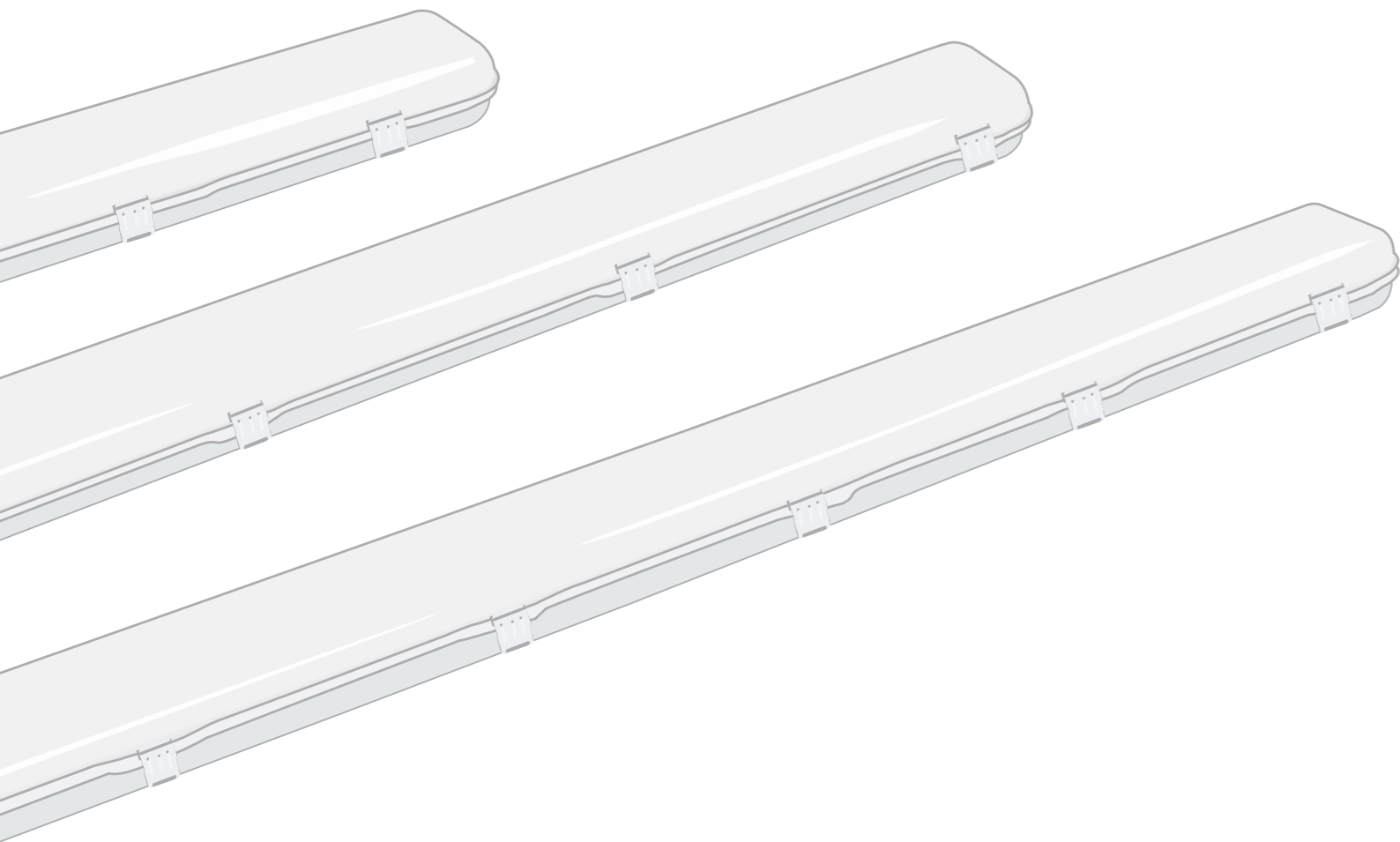
Energy efficient Surface mounted LED luminaires with a slim profile that gives a modern look.

Toolless connection terminal block for both side entry and cutout connection in middle.

The luminaire is made of polycarbonate in matte gray.

Available for both modern opal and traditional stripped diffuser provides almost glare-free light.

Come with on/off, microwave, or master/slave.

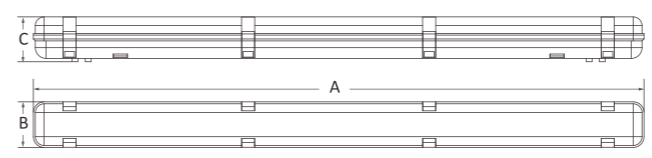


## Light technic

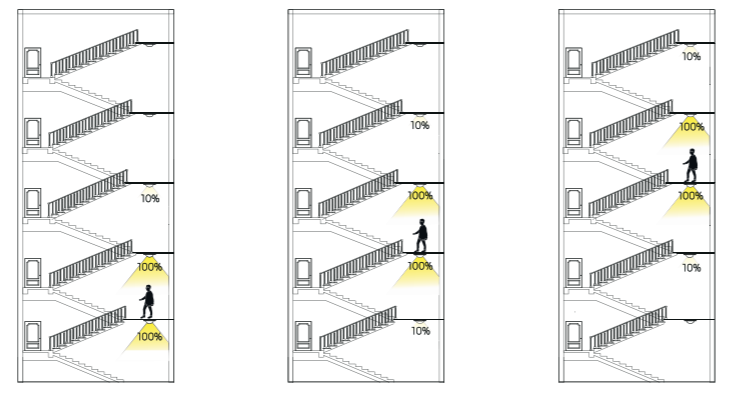
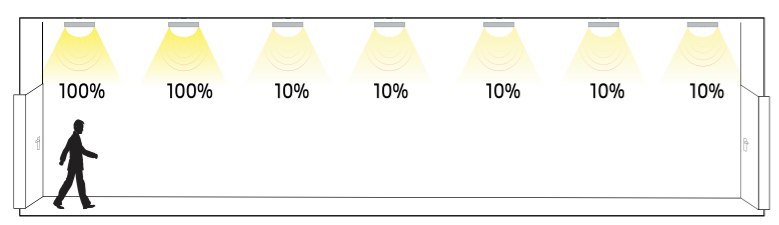


Art. no.	Output	CCT	Light source	Beam angle	Dimming
LOKI 20	500mA, 36V	4000K	Samsung	120°	Microwave
LOKI 40	1050mA, 36V	4000K	Samsung	120°	Microwave
LOKI 60	1500mA, 36V	4000K	Samsung	120°	Microwave

## Dimension (mm)



	A	B	C
LOKI 20	670mm	132mm	93mm
LOKI 40	1258mm	132mm	93mm
LOKI 60	1560mm	132mm	93mm



**Master/Slave function**